

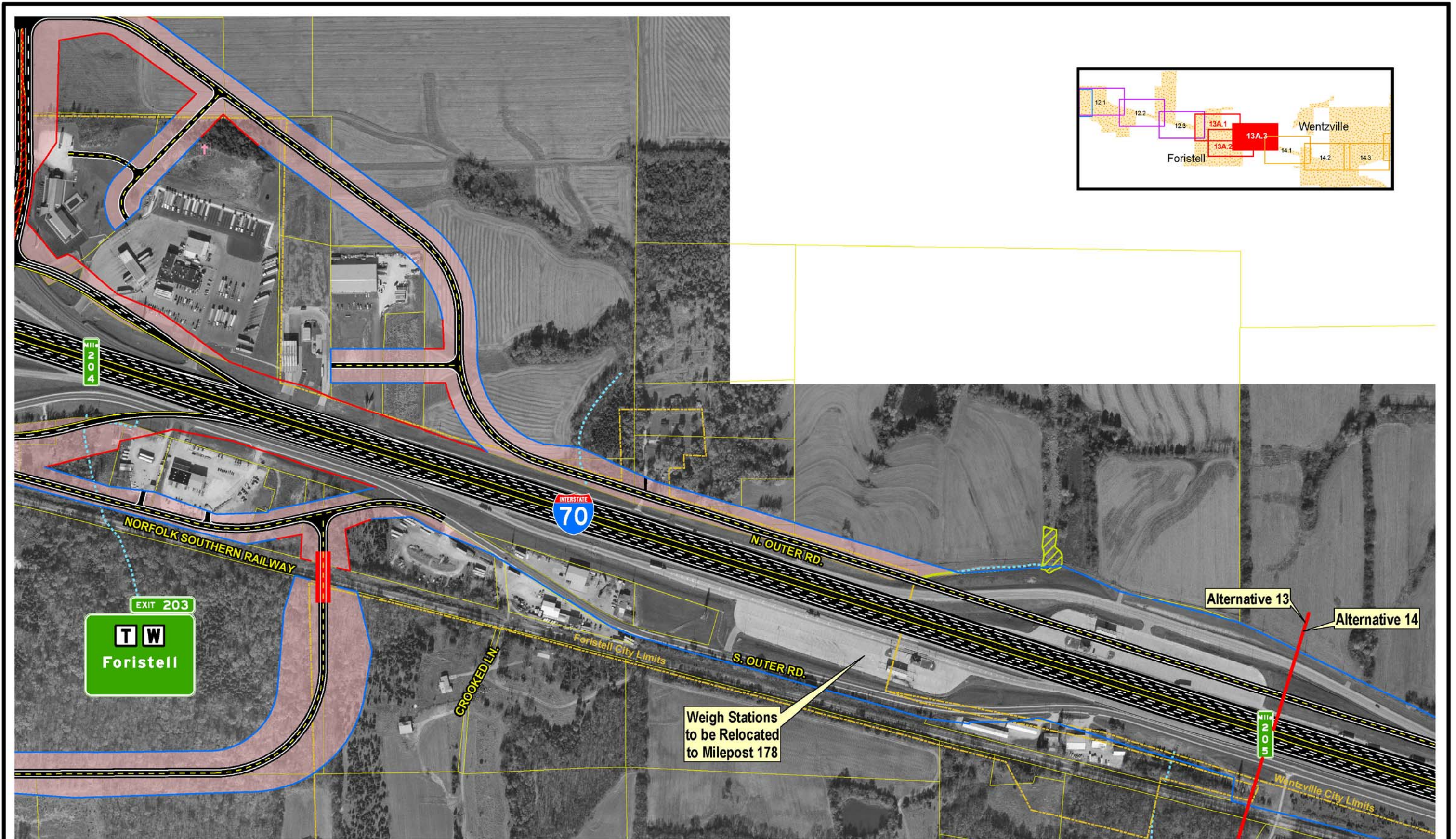
SIU
7
 Route 19
 to
 Lake St. Louis

<ul style="list-style-type: none"> — Limited Access RW — Right-In, Right-Out RW — Normal RW — Proposed Bridge 	<ul style="list-style-type: none"> City Limits Cemeteries Churches + Hospitals 	<ul style="list-style-type: none"> ▲ Schools ▲ Hazardous Materials ■ Parks Floodplains 	<ul style="list-style-type: none"> ■ Lakes ■ Jurisdictional Ponds Jurisdictional Wetlands Non-Jurisdictional Wetlands 	<ul style="list-style-type: none"> Existing Pavement to Remain (w/MoDOT Resource Number) NRHP Eligible Resource Parcel Boundary 	<ul style="list-style-type: none"> ⋯ Intermittent Streams — Perennial Streams ■ Residential Displacements ■ Commercial Displacements ■ Land Acquisition
--	---	--	---	---	---

Widening Improvements to Existing Corridor- Alternative 13A (Preferred)

Scale: 1" = 400'

EXHIBIT 13A.1



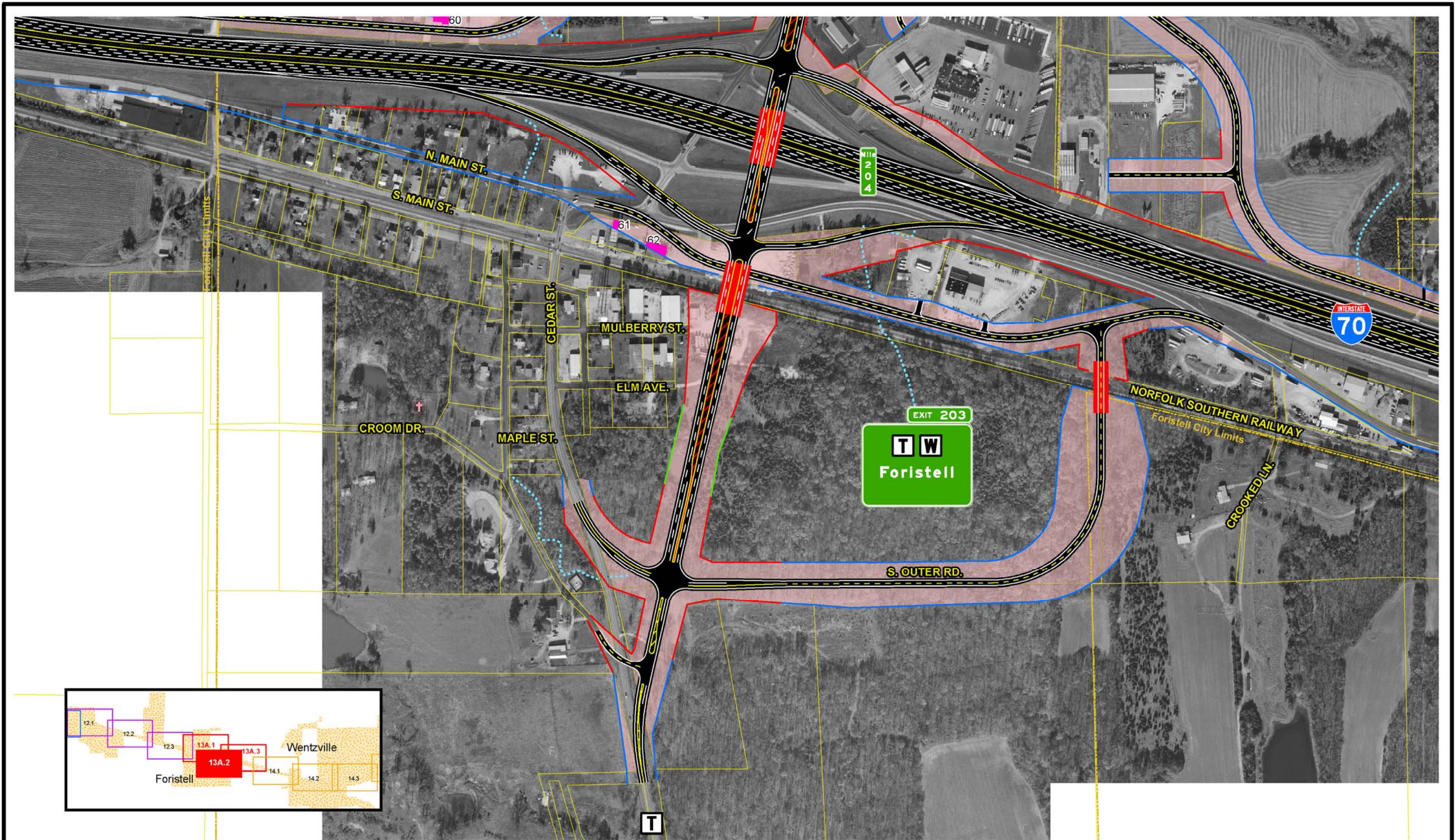
SIU
7
 Route 19
 to
 Lake St. Louis

- | | | | | |
|---|---|--|--|---|
| <ul style="list-style-type: none"> — Limited Access R/W — Right-In, Right-Out R/W — Normal R/W █ Proposed Bridge | <ul style="list-style-type: none"> City Limits + Cemeteries + Churches + Hospitals | <ul style="list-style-type: none"> ▲ Schools ▲ Hazardous Materials ■ Parks Floodplains | <ul style="list-style-type: none"> ■ Lakes ■ Jurisdictional Ponds Jurisdictional Wetlands Non-Jurisdictional Wetlands Parcel Boundary | <ul style="list-style-type: none"> Existing Pavement to Remain NRHP Eligible Resource (w/MoDOT Resource Number) Intermittent Streams Perennial Streams Residential Displacements Commercial Displacements Land Acquisition |
|---|---|--|--|---|

Widening Improvements to Existing Corridor- Alternative 13A (Preferred)

EXHIBIT **13A.3**

Scale: 1" = 400'



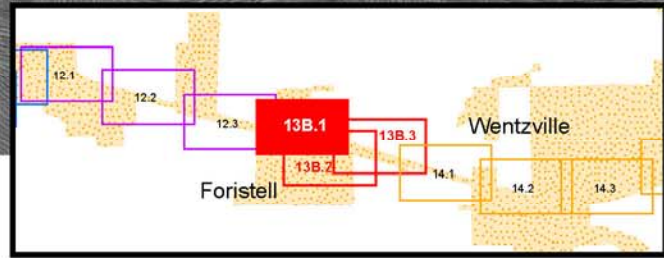
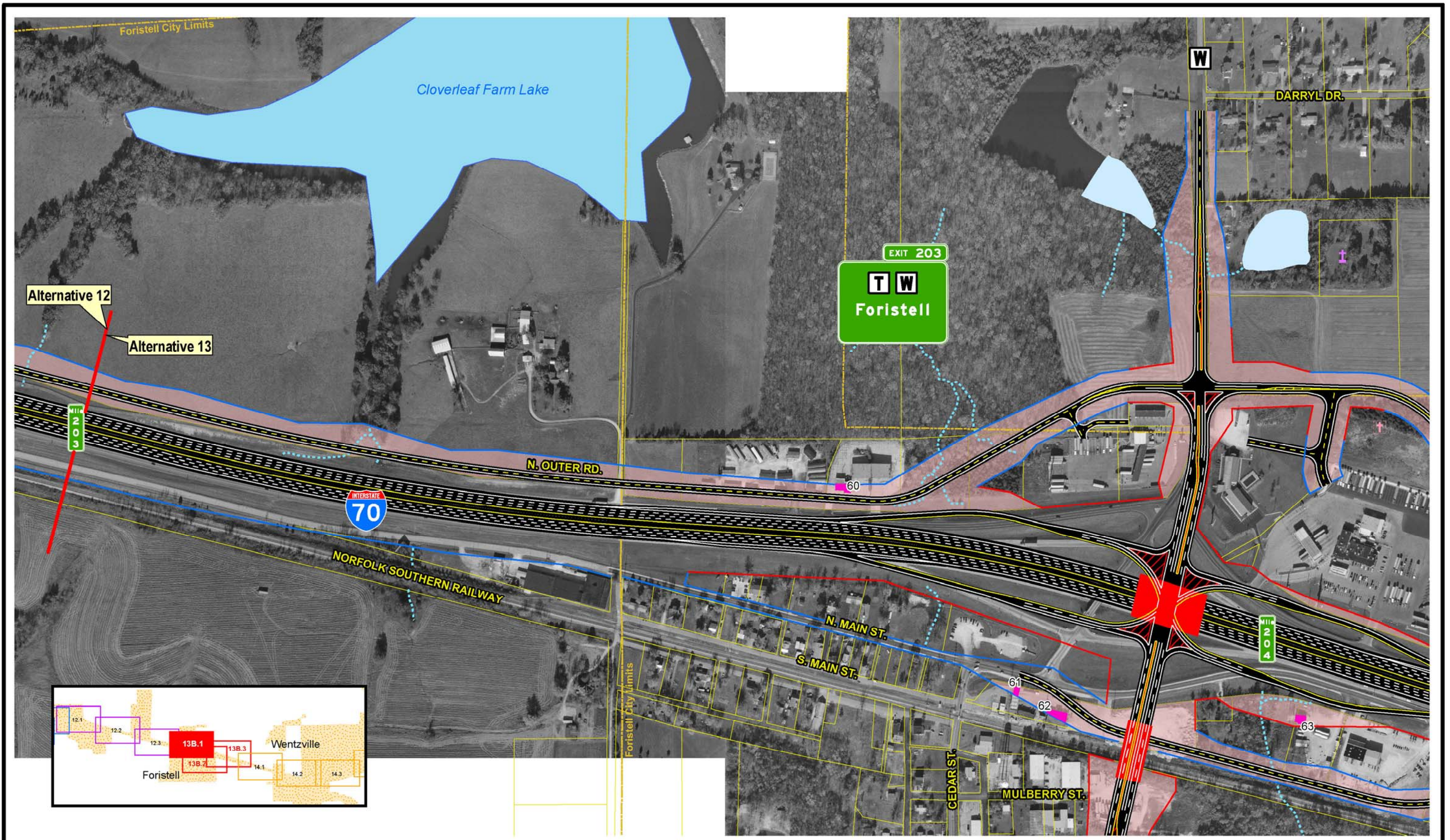
SIU
7
 Route 19
 to
 Lake St. Louis

- | | | | | |
|---|--|---|--|---|
| <ul style="list-style-type: none"> — Limited Access R/W — Right-In, Right-Out R/W — Normal R/W █ Proposed Bridge | <ul style="list-style-type: none"> City Limits + Cemeteries + Churches + Hospitals | <ul style="list-style-type: none"> ▲ Schools ▲ Hazardous Materials ■ Parks Floodplains | <ul style="list-style-type: none"> ■ Lakes ■ Jurisdictional Ponds Jurisdictional Wetlands Non-Jurisdictional Wetlands Parcel Boundary | <ul style="list-style-type: none"> Existing Pavement to Remain NRHP Eligible Resource (w/MoDOT Resource Number) Intermittent Streams Perennial Streams Residential Displacements Commercial Displacements Land Acquisition |
|---|--|---|--|---|

Widening Improvements to Existing Corridor- Alternative 13A (Preferred)

EXHIBIT
13A.2

Scale: 1" = 400'



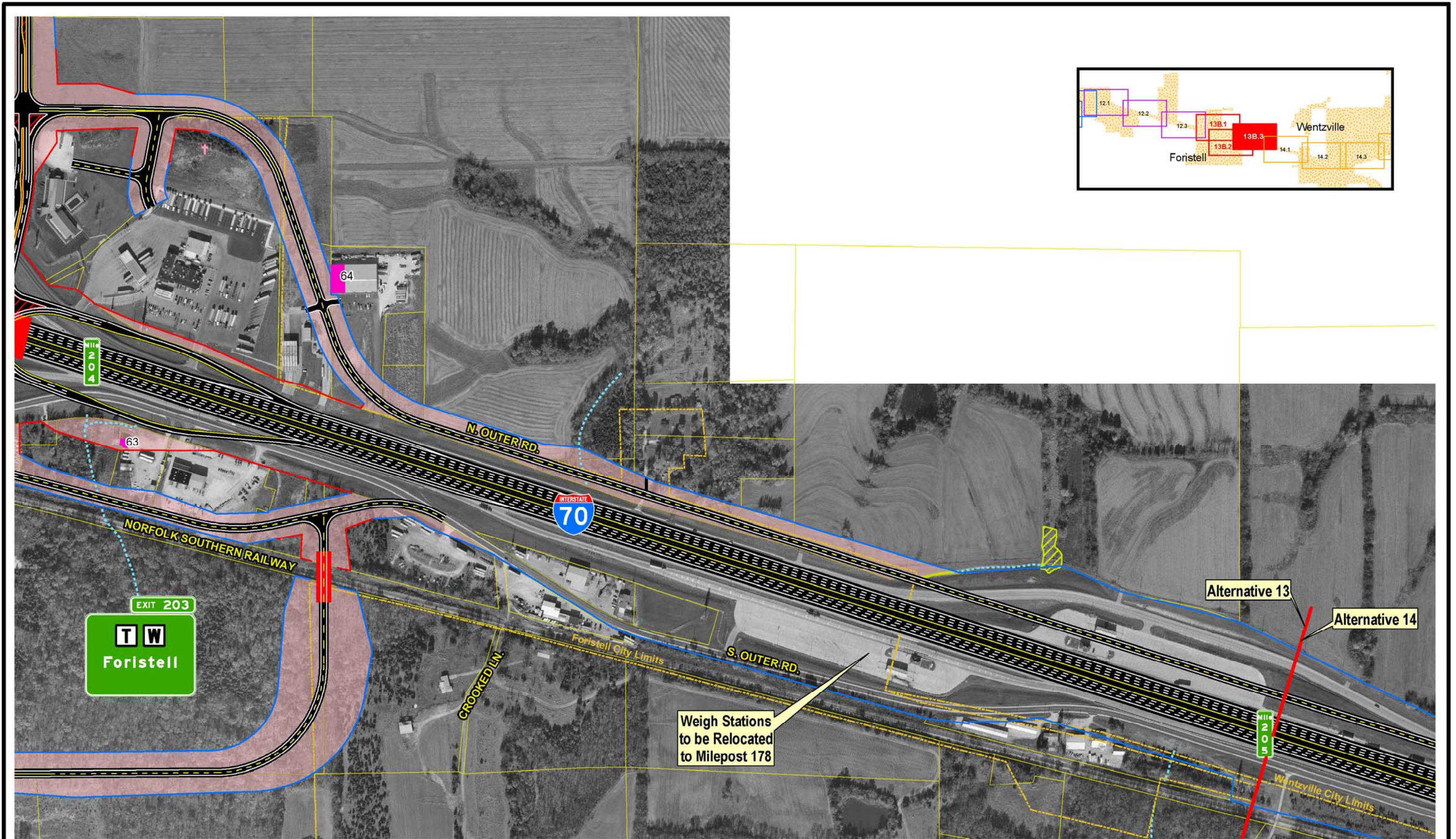
SIU
7
 Route 19
 to
 Lake St. Louis

- | | | | | | |
|---|--|---|--|--|---|
| <ul style="list-style-type: none"> — Limited Access R/W — Right-In, Right-Out R/W — Normal R/W ■ Proposed Bridge | <ul style="list-style-type: none"> City Limits + Cemeteries + Churches + Hospitals | <ul style="list-style-type: none"> ▲ Schools ▲ Hazardous Materials ■ Parks ■ Floodplains | <ul style="list-style-type: none"> ■ Lakes ■ Jurisdictional Ponds ■ Jurisdictional Wetlands ■ Non-Jurisdictional Wetlands | <ul style="list-style-type: none"> ■ Existing Pavement to Remain (w/MoDOT Resource Number) NRHP Eligible Resource Parcel Boundary | <ul style="list-style-type: none"> — Intermittent Streams — Perennial Streams ■ Residential Displacements ■ Commercial Displacements ■ Land Acquisition |
|---|--|---|--|--|---|

Widening Improvements to Existing Corridor- Alternative 13B

EXHIBIT **13B.1**

Scale: 1" = 400'



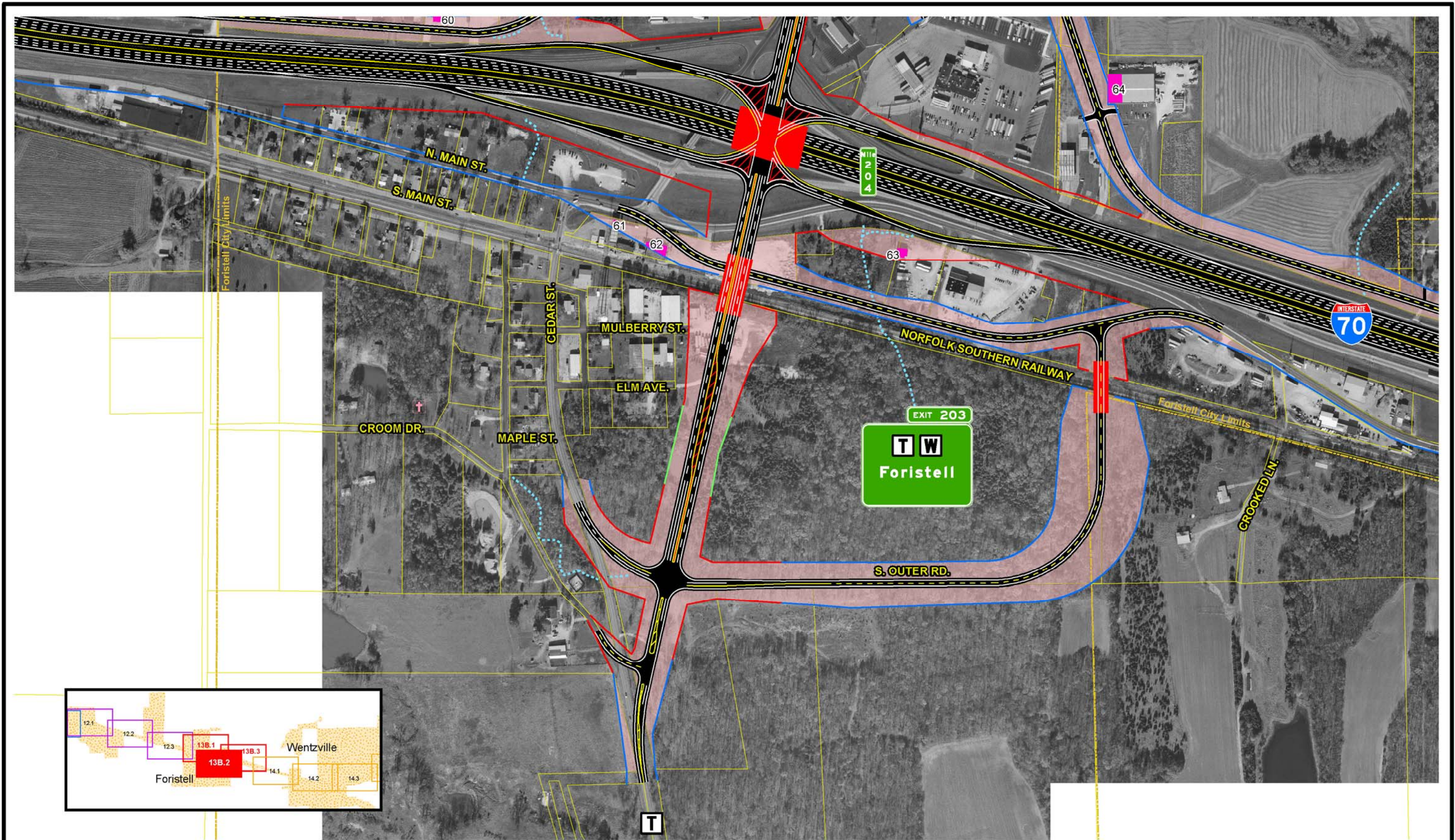
SIU
7
Route 19
to
Lake St. Louis

- | | | | | | |
|--|--|--|---|--|--|
| <ul style="list-style-type: none"> — Limited Access R/W — Right-In, Right-Out R/W — Normal R/W — Proposed Bridge | <ul style="list-style-type: none"> — City Limits — Cemeteries — Churches — Hospitals | <ul style="list-style-type: none"> — Schools — Hazardous Materials — Parks — Floodplains | <ul style="list-style-type: none"> — Lakes — Jurisdictional Ponds — Jurisdictional Wetlands — Non-Jurisdictional Wetlands | <ul style="list-style-type: none"> — Existing Pavement to Remain — NRHP Eligible Resource (w/MoDOT Resource Number) — Parcel Boundary | <ul style="list-style-type: none"> — Intermittent Streams — Perennial Streams — Residential Displacements — Commercial Displacements — Land Acquisition |
|--|--|--|---|--|--|

Widening Improvements to Existing Corridor- Alternative 13B

EXHIBIT 13B.3

Scale: 1" = 400'



SIU
7
 Route 19
 to
 Lake St. Louis

- | | | | | | |
|---|--|---|--|--|---|
| <ul style="list-style-type: none"> — Limited Access R/W — Right-In, Right-Out R/W — Normal R/W — Proposed Bridge | <ul style="list-style-type: none"> City Limits + Cemeteries + Churches + Hospitals | <ul style="list-style-type: none"> ▲ Schools ▲ Hazardous Materials ■ Parks ■ Floodplains | <ul style="list-style-type: none"> ■ Lakes ■ Jurisdictional Ponds ■ Jurisdictional Wetlands ■ Non-Jurisdictional Wetlands | <ul style="list-style-type: none"> ■ Existing Pavement to Remain ■ NRHP Eligible Resource (w/MoDOT Resource Number) Parcel Boundary | <ul style="list-style-type: none"> - - - Intermittent Streams — Perennial Streams ■ Residential Displacements ■ Commercial Displacements ■ Land Acquisition |
|---|--|---|--|--|---|

Scale: 1" = 400'

Widening Improvements to Existing Corridor- Alternative 13B

EXHIBIT 13B.2