



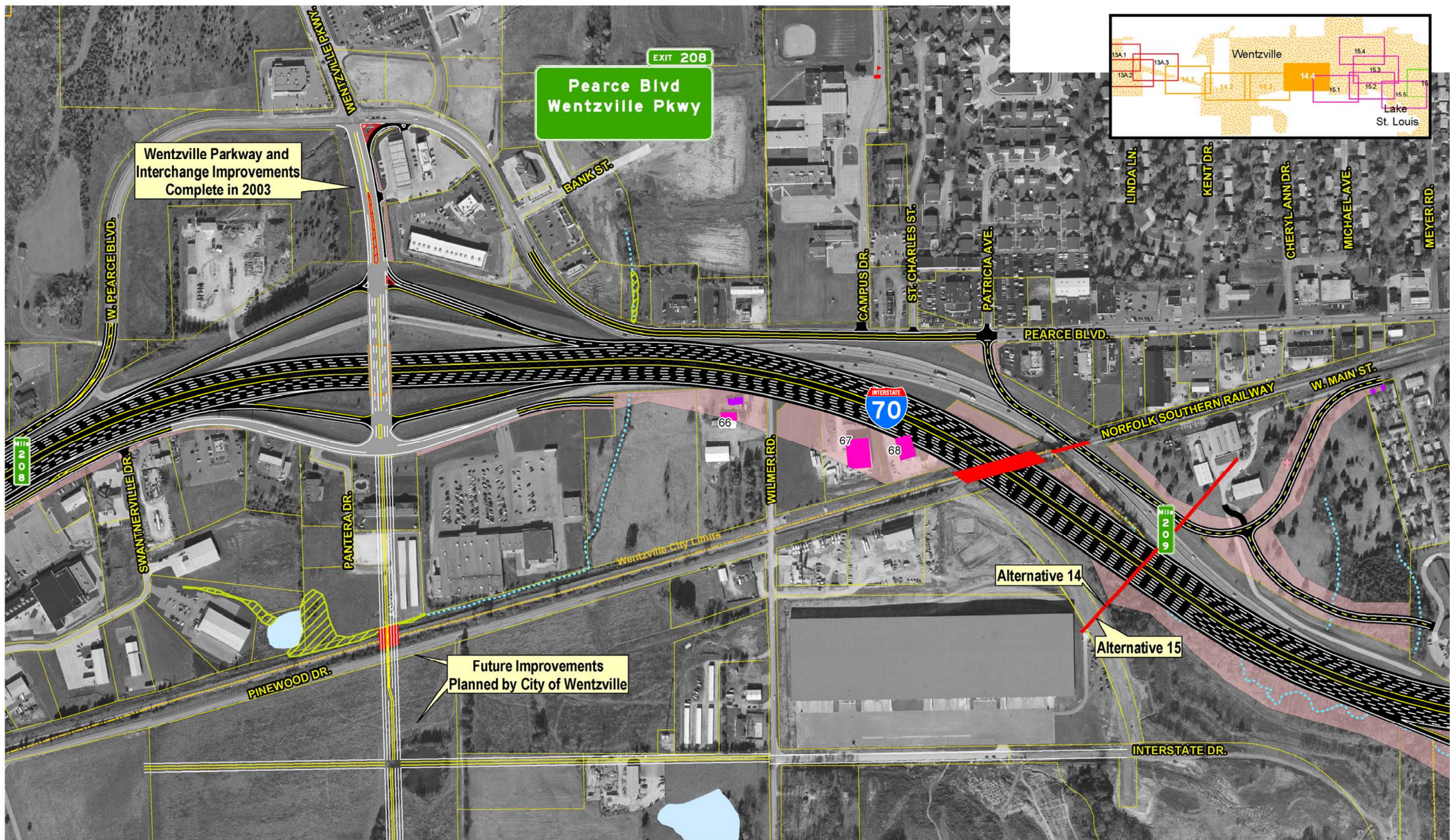
SIU
7
Route 19
to
Lake St. Louis

- | | | | | | |
|---|--|--|---|--|--|
| <ul style="list-style-type: none"> — Limited Access R/W — Right-In, Right-Out R/W — Normal R/W — Proposed Bridge | <ul style="list-style-type: none"> City Limits + Cemeteries + Churches + Hospitals | <ul style="list-style-type: none"> ▲ Schools ▲ Hazardous Materials ■ Parks ■ Floodplains | <ul style="list-style-type: none"> ■ Lakes ■ Jurisdictional Ponds ■ Jurisdictional Wetlands ■ Non-Jurisdictional Wetlands | <ul style="list-style-type: none"> ■ Existing Pavement to Remain NRHP Eligible Resource (w/MoDOT Resource Number) Parcel Boundary | <ul style="list-style-type: none"> ⋯ Intermittent Streams — Perennial Streams ■ Residential Displacements ■ Commercial Displacements ■ Land Acquisition |
|---|--|--|---|--|--|

Widening Improvements to Existing Corridor- Alternative 14 (Preferred)

Scale: 1" = 400'

EXHIBIT 14.1



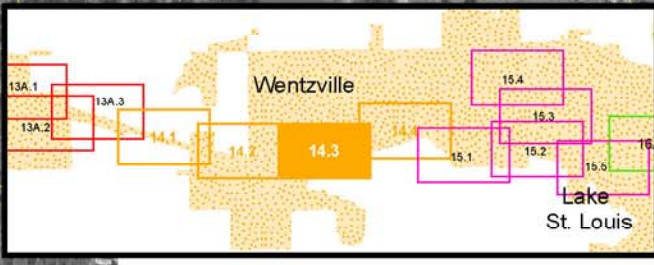
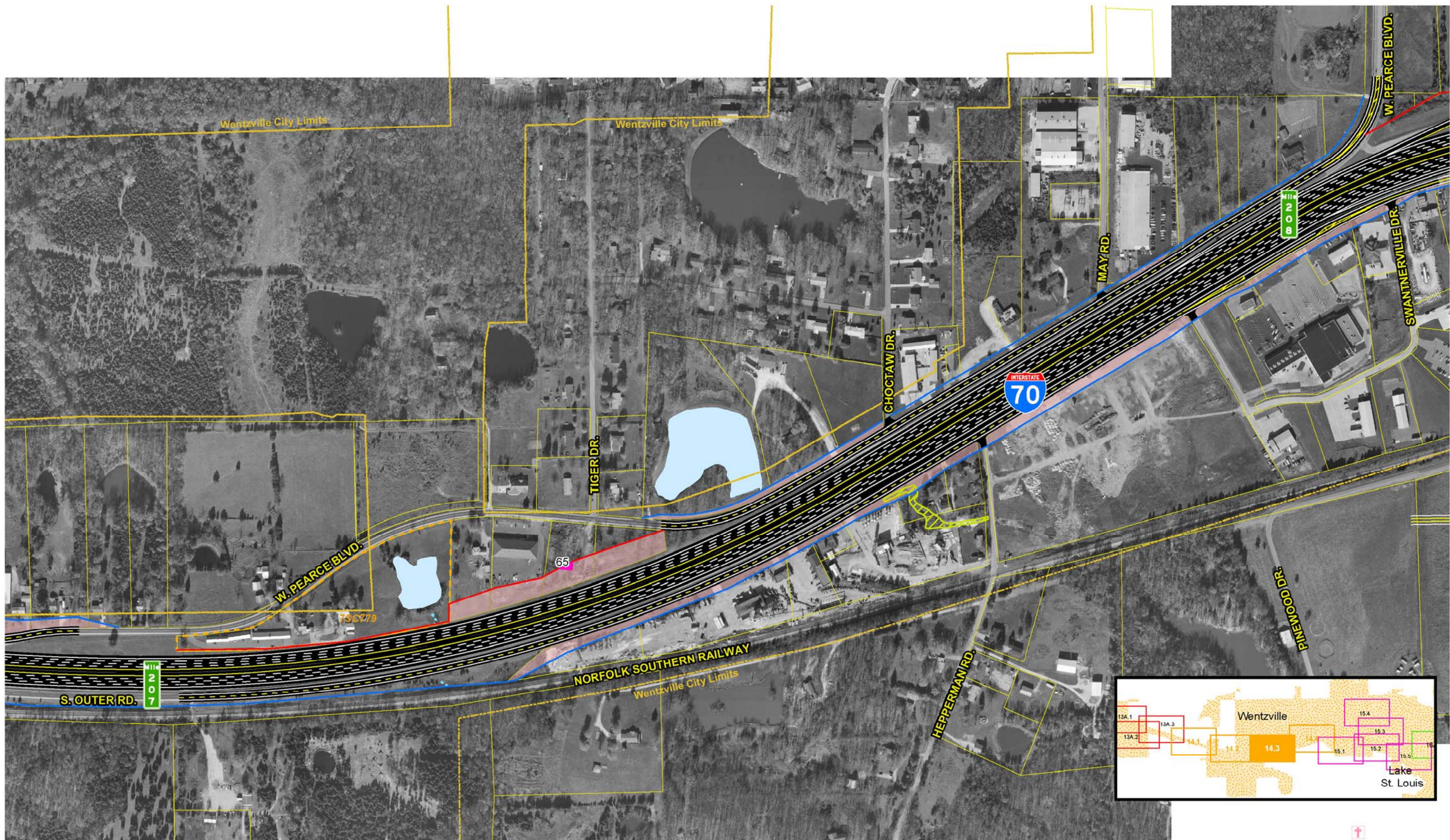
SIU
7
Route 19
to
Lake St. Louis

- | | | | | | |
|---------------------------|---------------|-----------------------|-------------------------------|--|-----------------------------|
| — Limited Access R/W | — City Limits | ▲ Schools | — Lakes | — Existing Pavement to Remain | — Intermittent Streams |
| — Right-In, Right-Out R/W | — Cemeteries | ▲ Hazardous Materials | — Jurisdictional Ponds | — NRHP Eligible Resource (w/MoDOT Resource Number) | — Perennial Streams |
| — Normal R/W | — Churches | — Parks | — Jurisdictional Wetlands | — Parcel Boundary | — Residential Displacements |
| — Proposed Bridge | — Hospitals | — Floodplains | — Non-Jurisdictional Wetlands | — Land Acquisition | — Commercial Displacements |

Widening Improvements to Existing Corridor- Alternative 14 (Preferred)

Scale: 1" = 400'

EXHIBIT
14.4

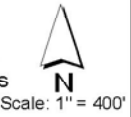


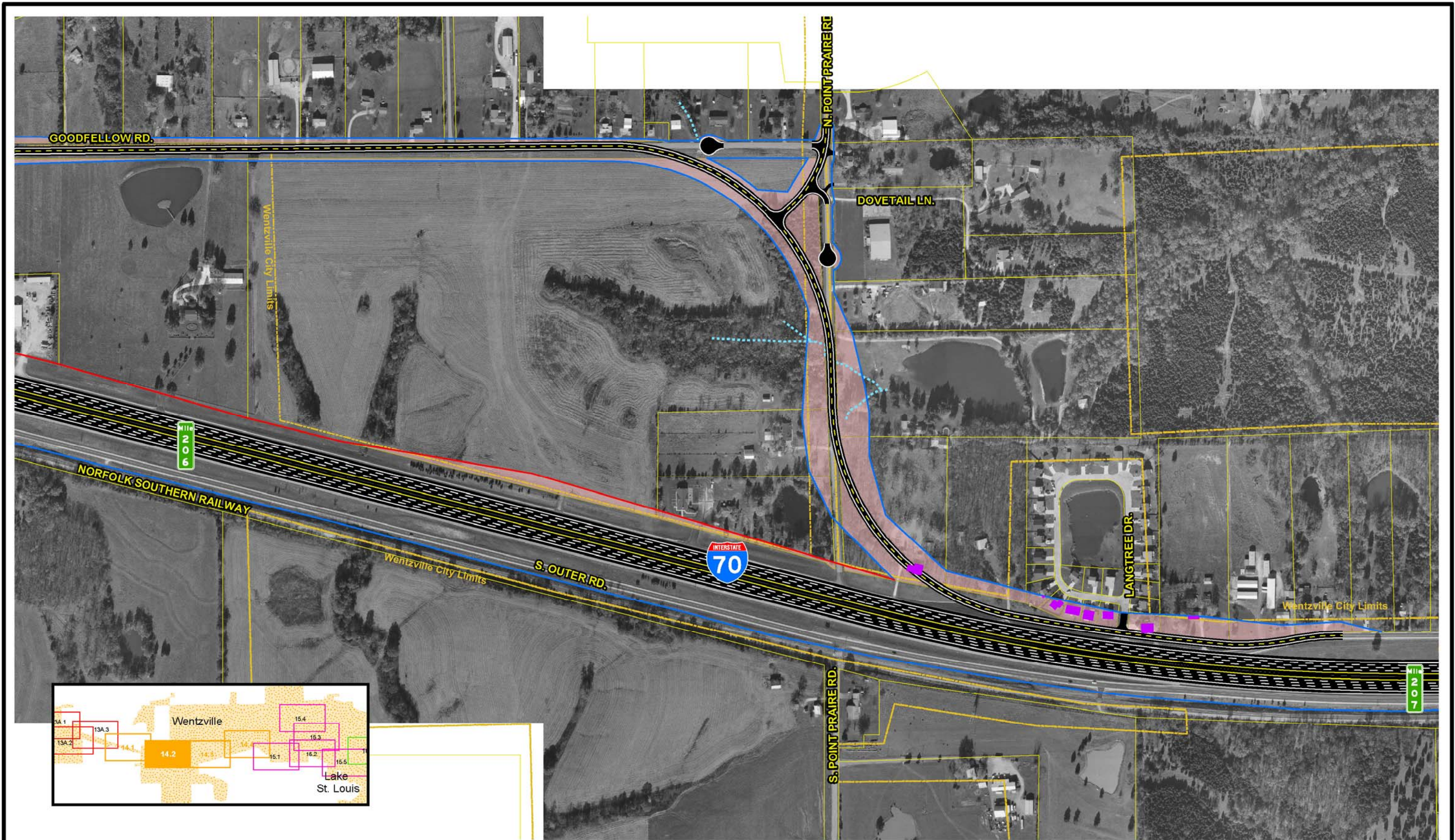
SIU
7
Route 19
to
Lake St. Louis

— Limited Access R/W	— City Limits	▲ Schools	— Lakes	— Existing Pavement to Remain	— Intermittent Streams
— Right-In, Right-Out R/W	— Cemeteries	▲ Hazardous Materials	— Jurisdictional Ponds	— NRHP Eligible Resource (w/MoDOT Resource Number)	— Perennial Streams
— Normal R/W	— Churches	— Parks	— Jurisdictional Wetlands	— Parcel Boundary	— Residential Displacements
— Proposed Bridge	— Hospitals	— Floodplains	— Non-Jurisdictional Wetlands		— Commercial Displacements
					— Land Acquisition

Widening Improvements to
Existing Corridor-
Alternative 14 (Preferred)

EXHIBIT
14.3





SIU
7
Route 19
to
Lake St. Louis

— Limited Access R/W	— City Limits	▲ Schools	— Lakes	— Existing Pavement to Remain	— Intermittent Streams
— Right-In, Right-Out R/W	— Cemeteries	▲ Hazardous Materials	— Jurisdictional Ponds	— NRHP Eligible Resource (w/MoDOT Resource Number)	— Perennial Streams
— Normal R/W	— Churches	— Parks	— Jurisdictional Wetlands	— Parcel Boundary	— Residential Displacements
— Proposed Bridge	— Hospitals	— Floodplains	— Non-Jurisdictional Wetlands		— Commercial Displacements
					— Land Acquisition

Widening Improvements to
Existing Corridor-
Alternative 14 (Preferred)

EXHIBIT
14.2

