

EXIT 210
 40 61
 St Louis
 Wentzville
 Hannibal

Alternative 14

Alternative 15

INTERSTATE DR.

Interstate Drive
 West of Route Z
 Completed Following
 Project Photography

EXIT 209

Z
 Church St
 New Melle

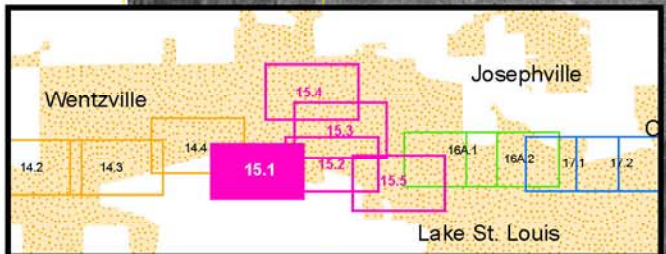
Interstate Drive
 West of Route Z
 Completed Following
 Project Photography

Future Improvements Planned
 by City of Wentzville

Wentzville City Limits

INTERSTATE
 70

EXIT
 210



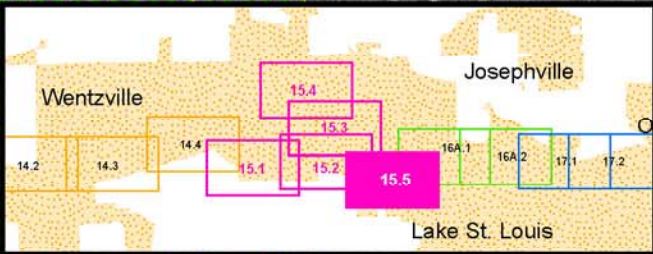
SIU
 7
 Route 19
 to
 Lake St. Louis

- Limited Access R/W
- Right-In, Right-Out R/W
- Normal R/W
- Proposed Bridge
- City Limits
- Cemeteries
- Churches
- Hospitals
- Schools
- Hazardous Materials
- Parks
- Floodplains
- Lakes
- Jurisdictional Ponds
- Jurisdictional Wetlands
- Non-Jurisdictional Wetlands
- Existing Pavement to Remain
- NRHP Eligible Resource (w/MoDOT Resource Number)
- Parcel Boundary
- Intermittent Streams
- Perennial Streams
- Residential Displacements
- Commercial Displacements
- Land Acquisition

Scale: 1" = 400'

Widening Improvements to
 Existing Corridor-
 Alternative 15 (Preferred)

EXHIBIT
 15.1

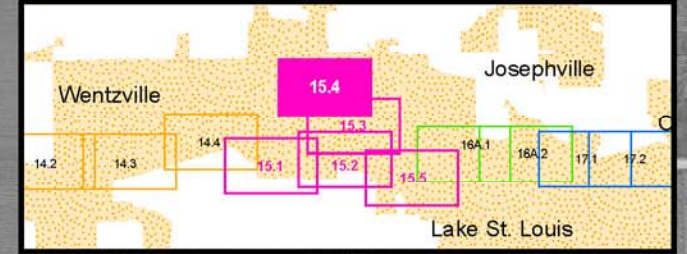
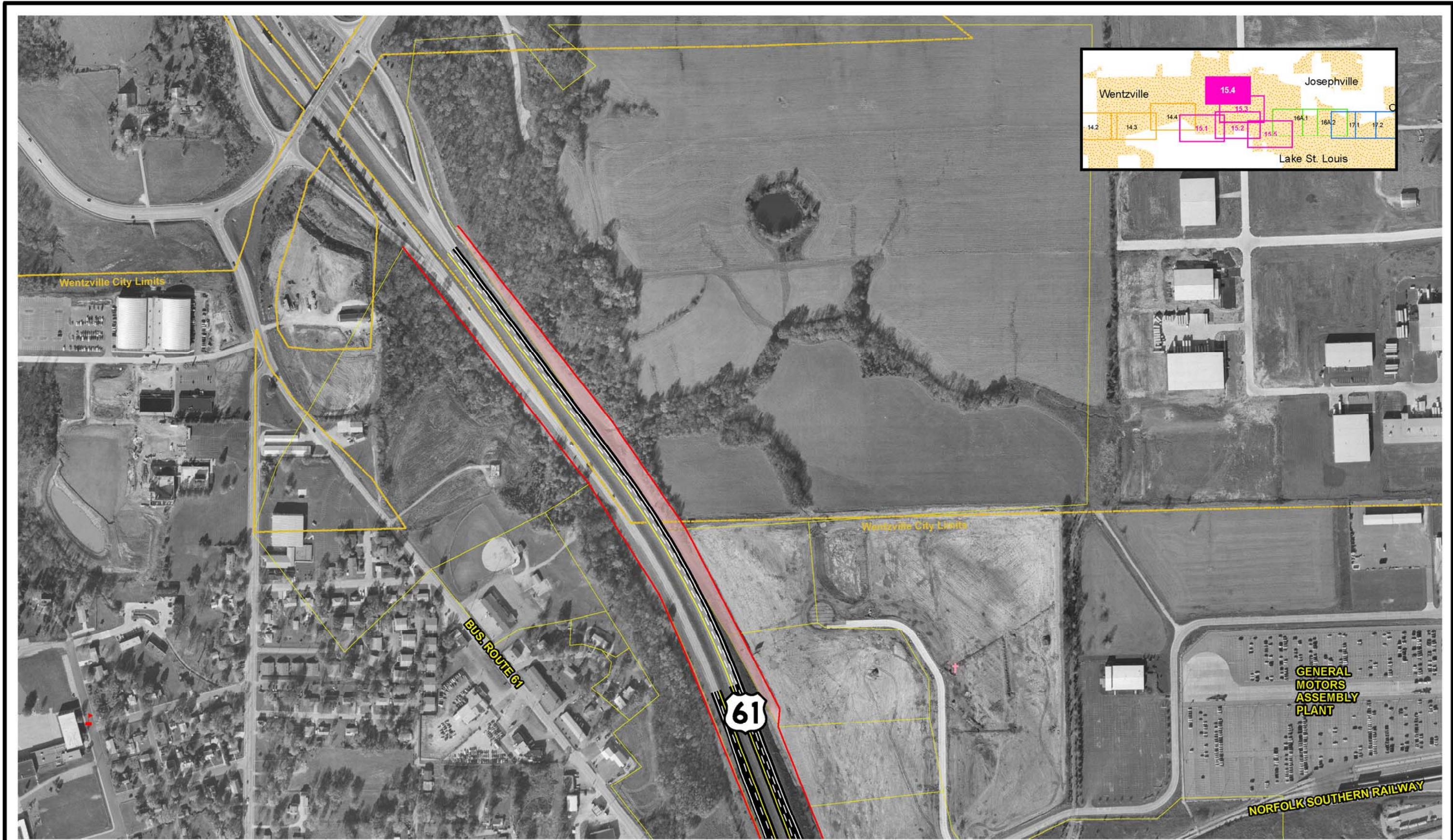


SIU
7
Route 19
to
Lake St. Louis

- | | | | | | |
|--|--|--|---|--|--|
| <ul style="list-style-type: none"> — Limited Access R/W — Right-In, Right-Out R/W — Normal R/W — Proposed Bridge | <ul style="list-style-type: none"> — City Limits — Cemeteries — Churches — Hospitals | <ul style="list-style-type: none"> — Schools — Hazardous Materials — Parks — Floodplains | <ul style="list-style-type: none"> — Lakes — Jurisdictional Ponds — Jurisdictional Wetlands — Non-Jurisdictional Wetlands | <ul style="list-style-type: none"> — Existing Pavement to Remain — NRHP Eligible Resource (w/MoDOT Resource Number) — Parcel Boundary | <ul style="list-style-type: none"> — Intermittent Streams — Perennial Streams — Residential Displacements — Commercial Displacements — Land Acquisition |
|--|--|--|---|--|--|

Widening Improvements to Existing Corridor- Alternative 15 (Preferred)

EXHIBIT 15.5

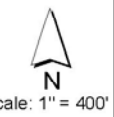


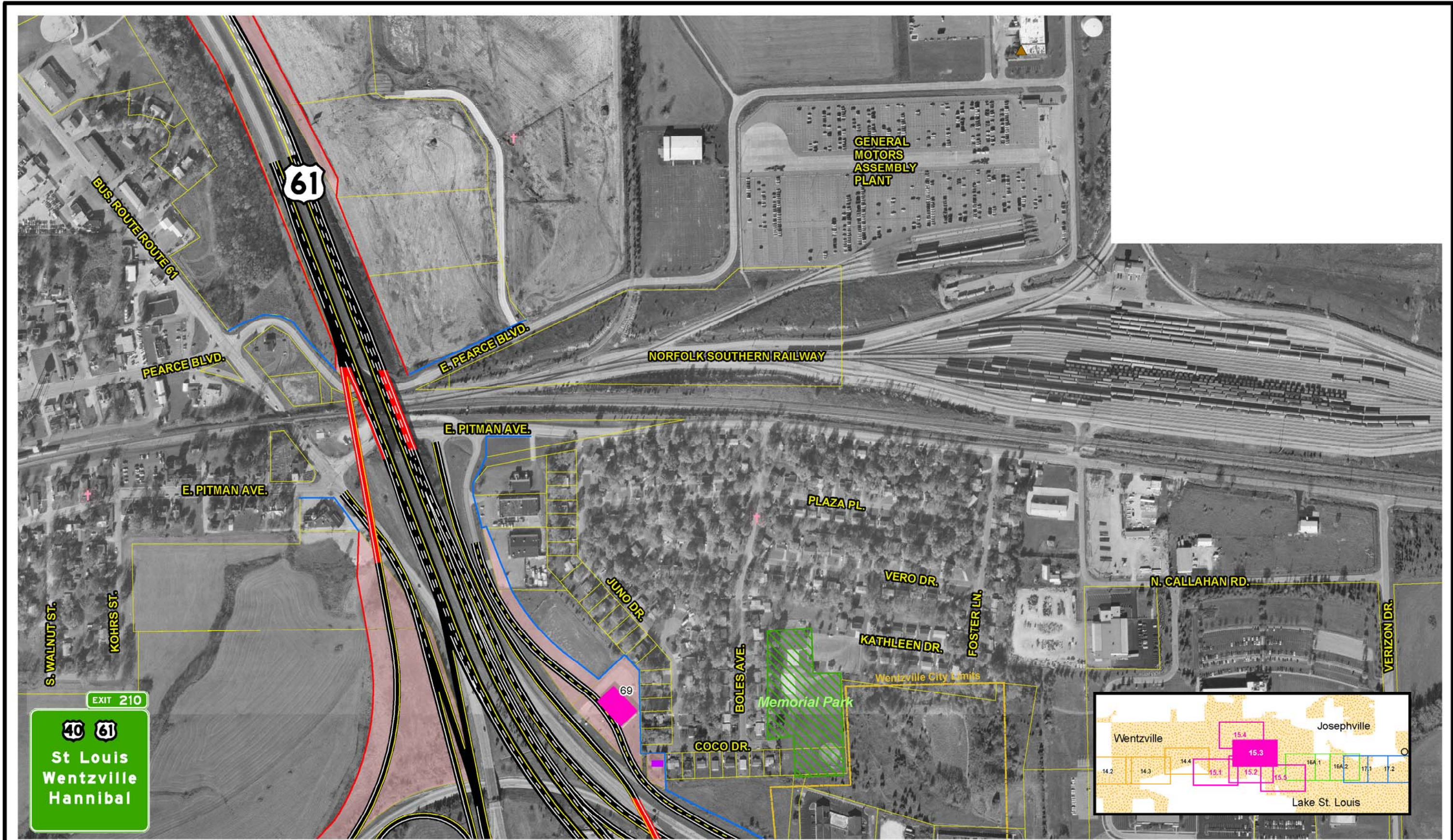
SIU
7
Route 19
to
Lake St. Louis

— Limited Access R/W	— City Limits	▲ Schools	— Lakes	— Existing Pavement to Remain	— Intermittent Streams
— Right-In, Right-Out R/W	⊕ Cemeteries	▲ Hazardous Materials	— Jurisdictional Ponds	— NRHP Eligible Resource (w/MoDOT Resource Number)	— Perennial Streams
— Normal R/W	⊕ Churches	▲ Parks	— Jurisdictional Wetlands	— Parcel Boundary	— Residential Displacements
— Proposed Bridge	⊕ Hospitals	▲ Floodplains	— Non-Jurisdictional Wetlands	— Land Aquisition	— Commercial Displacements

Widening Improvements to
Existing Corridor-
Alternative 15 (Preferred)

EXHIBIT
15.4





EXIT 210

40 61

St Louis
Wentzville
Hannibal



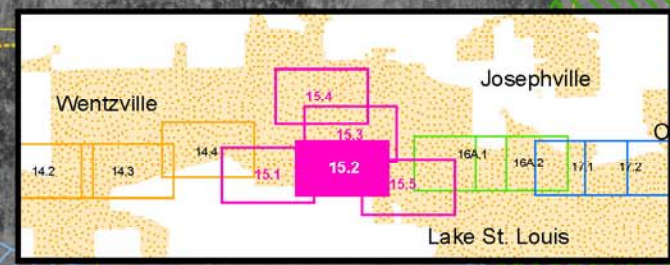
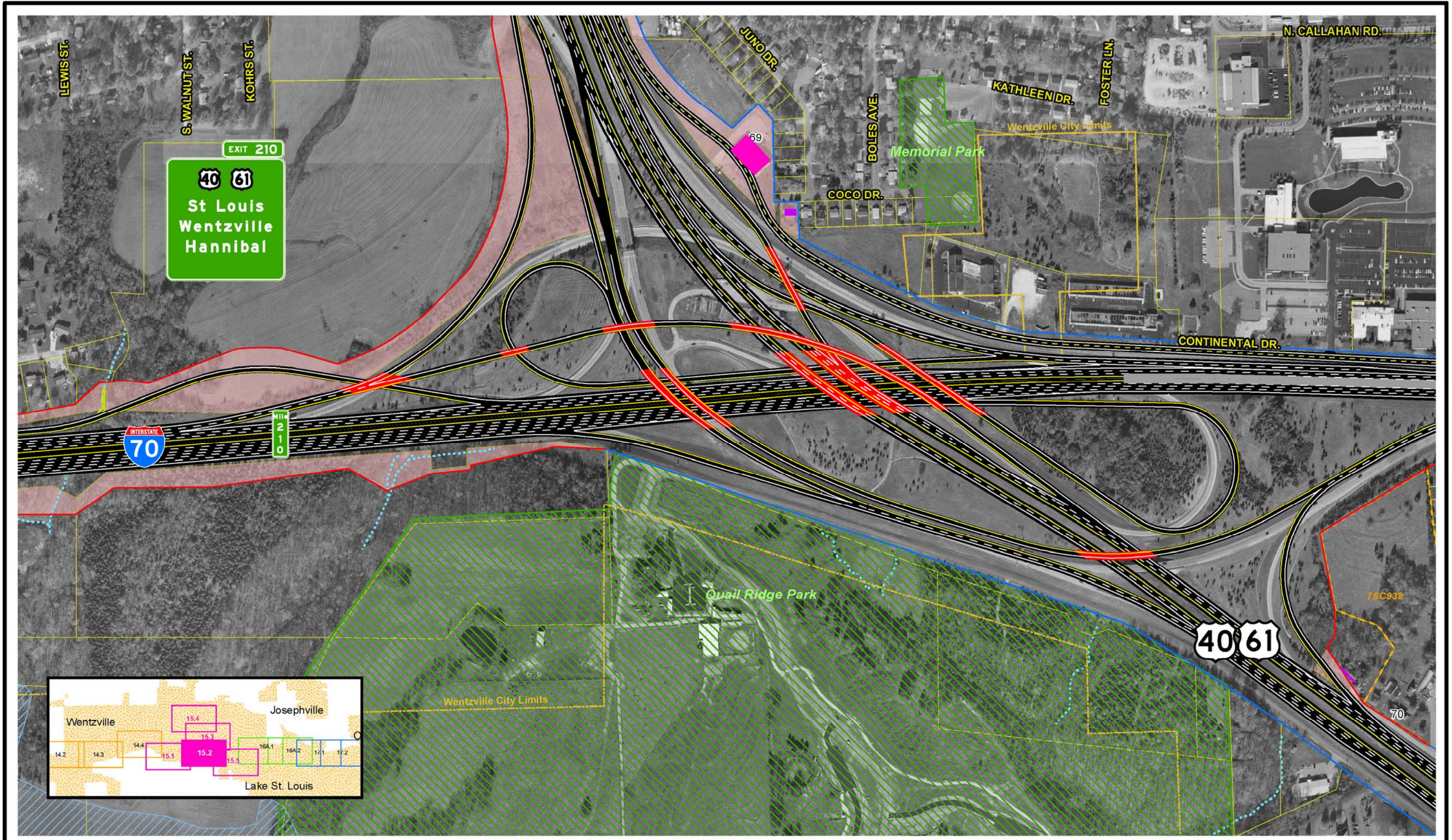
SIU
7
Route 19
to
Lake St. Louis

- | | | | | | |
|---------------------------|---------------|-----------------------|-------------------------------|--|-----------------------------|
| — Limited Access R/W | — City Limits | ▲ Schools | — Lakes | — Existing Pavement to Remain | — Intermittent Streams |
| — Right-In, Right-Out R/W | — Cemeteries | ▲ Hazardous Materials | — Jurisdictional Ponds | — NRHP Eligible Resource (w/MoDOT Resource Number) | — Perennial Streams |
| — Normal R/W | — Churches | — Parks | — Jurisdictional Wetlands | — Parcel Boundary | — Residential Displacements |
| — Proposed Bridge | — Hospitals | — Floodplains | — Non-Jurisdictional Wetlands | | — Commercial Displacements |

Widening Improvements to Existing Corridor- Alternative 15 (Preferred)

Scale: 1" = 400'

EXHIBIT
15.3



SIU
7
Route 19
to
Lake St. Louis

- Limited Access R/W
- Right-In, Right-Out R/W
- Normal R/W
- Proposed Bridge
- City Limits
- Cemeteries
- Churches
- Hospitals
- Schools
- Hazardous Materials
- Parks
- Floodplains
- Lakes
- Jurisdictional Ponds
- Jurisdictional Wetlands
- Non-Jurisdictional Wetlands
- Existing Pavement to Remain
- NRHP Eligible Resource (w/MoDOT Resource Number)
- Parcel Boundary
- Intermittent Streams
- Perennial Streams
- Residential Displacements
- Commercial Displacements
- Land Acquisition

Widening Improvements to
Existing Corridor-
Alternative 15 (Preferred)

EXHIBIT
15.2

