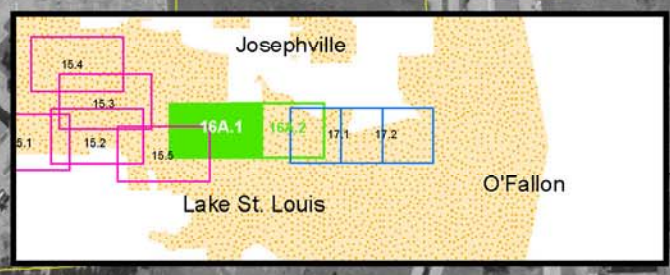


EXIT 212
A

INTERSTATE
70

Alternative 15

Alternative 16



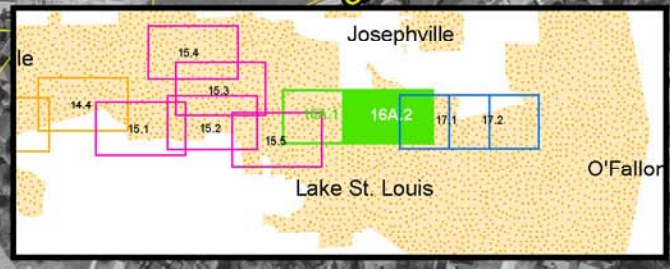
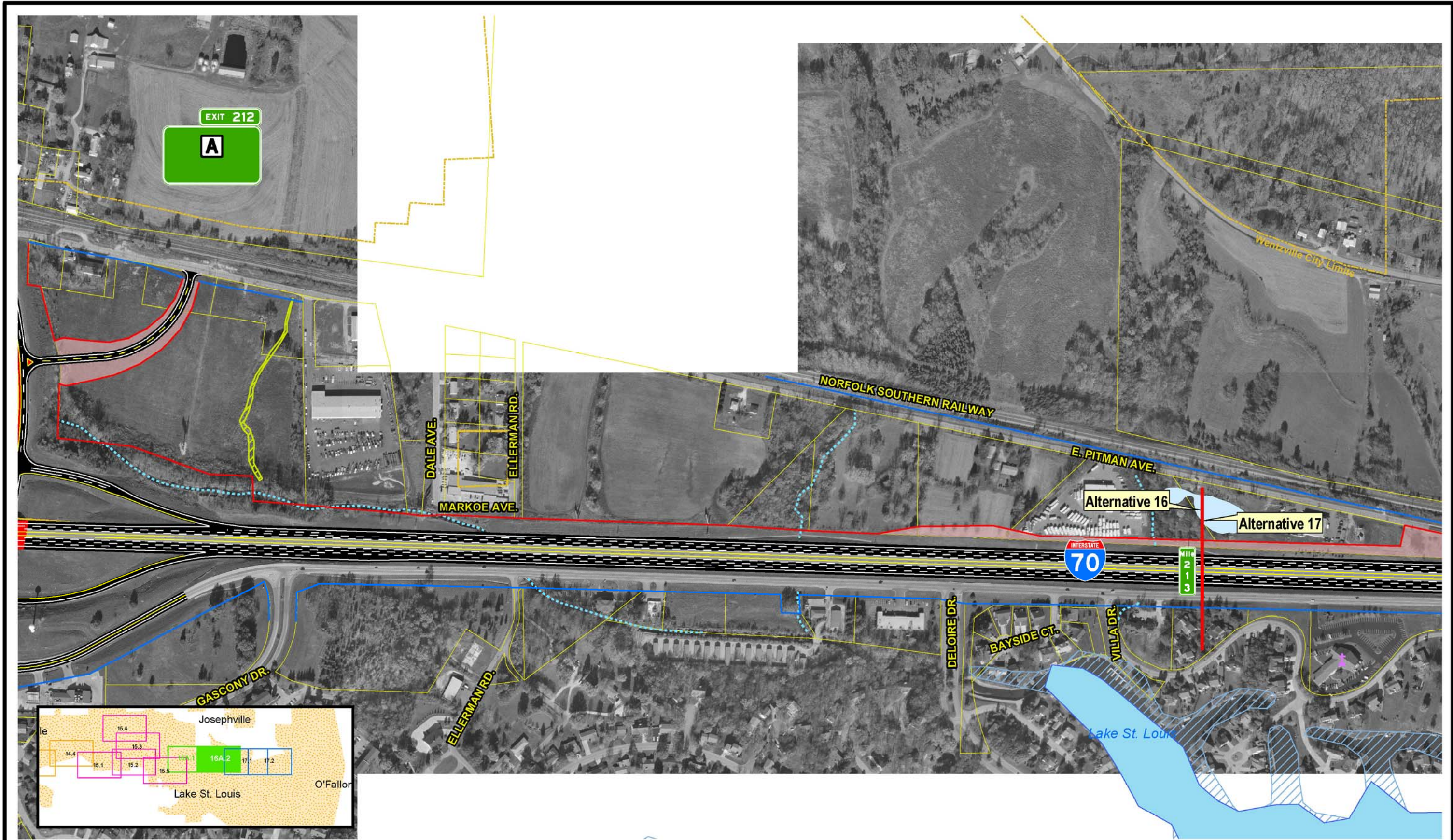
SIU
7
Route 19
to
Lake St. Louis

- | | | | | | |
|---------------------------|---------------|-----------------------|-------------------------------|--|-----------------------------|
| — Limited Access R/W | — City Limits | ▲ Schools | — Lakes | — Existing Pavement to Remain | — Intermittent Streams |
| — Right-In, Right-Out R/W | — Cemeteries | ▲ Hazardous Materials | — Jurisdictional Ponds | — NRHP Eligible Resource (w/MoDOT Resource Number) | — Perennial Streams |
| — Normal R/W | — Churches | — Parks | — Jurisdictional Wetlands | — Parcel Boundary | — Residential Displacements |
| — Proposed Bridge | — Hospitals | — Floodplains | — Non-Jurisdictional Wetlands | | — Commercial Displacements |
| | | | | | — Land Acquisition |

Widening Improvements to
Existing Corridor-
Alternative 16A (Preferred)

EXHIBIT
16A.1

Scale: 1" = 400'



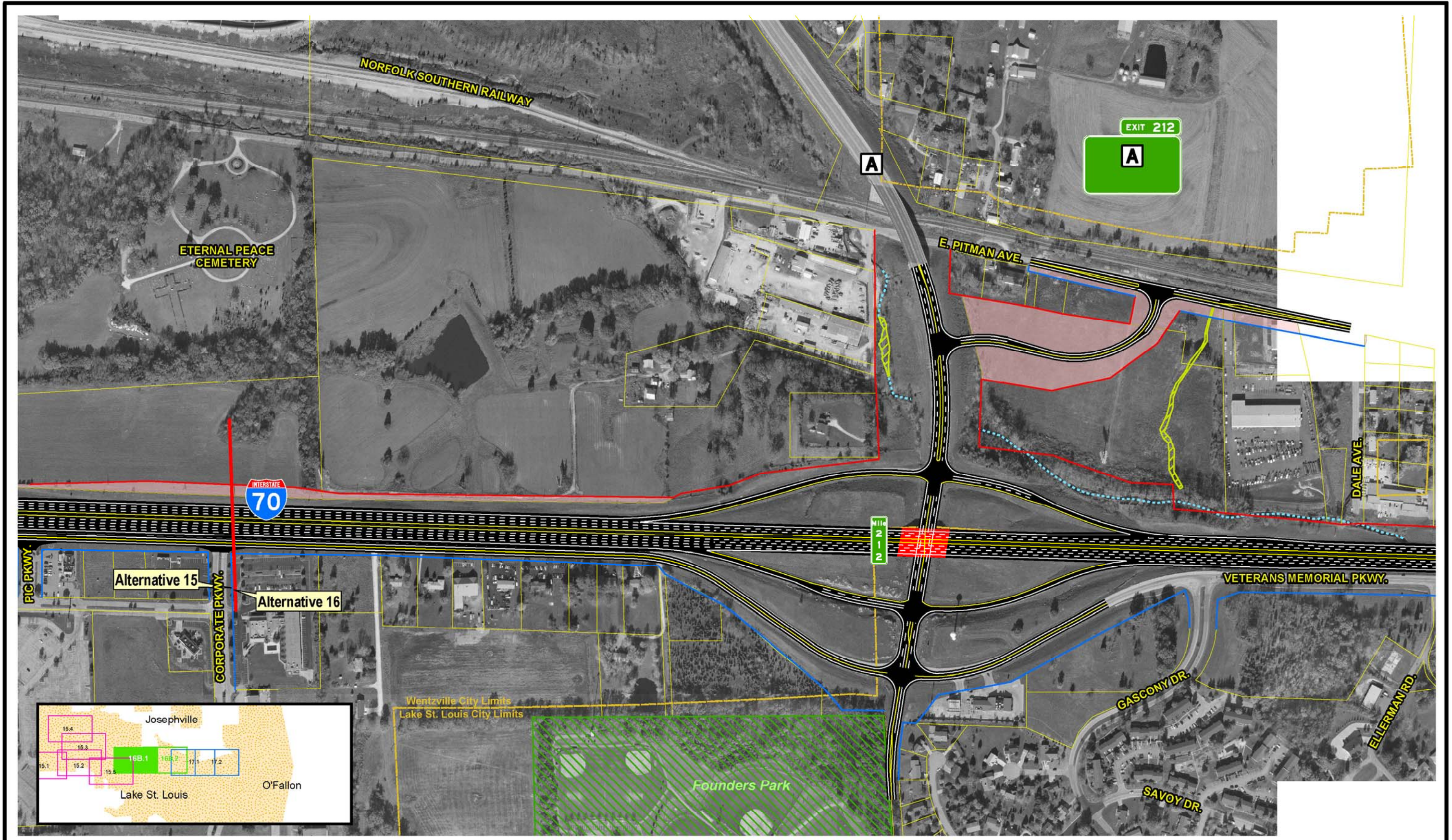
SIU
7
Route 19
to
Lake St. Louis

- | | | | | | |
|---|--|---|--|--|---|
| <ul style="list-style-type: none"> — Limited Access R/W — Right-In, Right-Out R/W — Normal R/W — Proposed Bridge | <ul style="list-style-type: none"> City Limits Cemeteries Churches Hospitals | <ul style="list-style-type: none"> ▲ Schools ▲ Hazardous Materials ■ Parks ■ Floodplains | <ul style="list-style-type: none"> ■ Lakes ■ Jurisdictional Ponds ■ Jurisdictional Wetlands ■ Non-Jurisdictional Wetlands | <ul style="list-style-type: none"> ■ Existing Pavement to Remain NRHP Eligible Resource (w/MoDOT Resource Number) Parcel Boundary | <ul style="list-style-type: none"> ⋯ Intermittent Streams — Perennial Streams ■ Residential Displacements ■ Commercial Displacements ■ Land Acquisition |
|---|--|---|--|--|---|

Widening Improvements to Existing Corridor-
Alternative 16A (Preferred)

EXHIBIT 16A.2

Scale: 1" = 400'



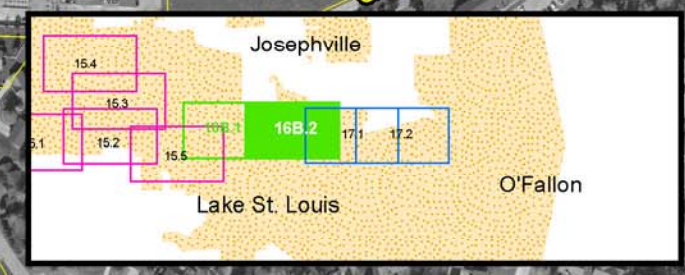
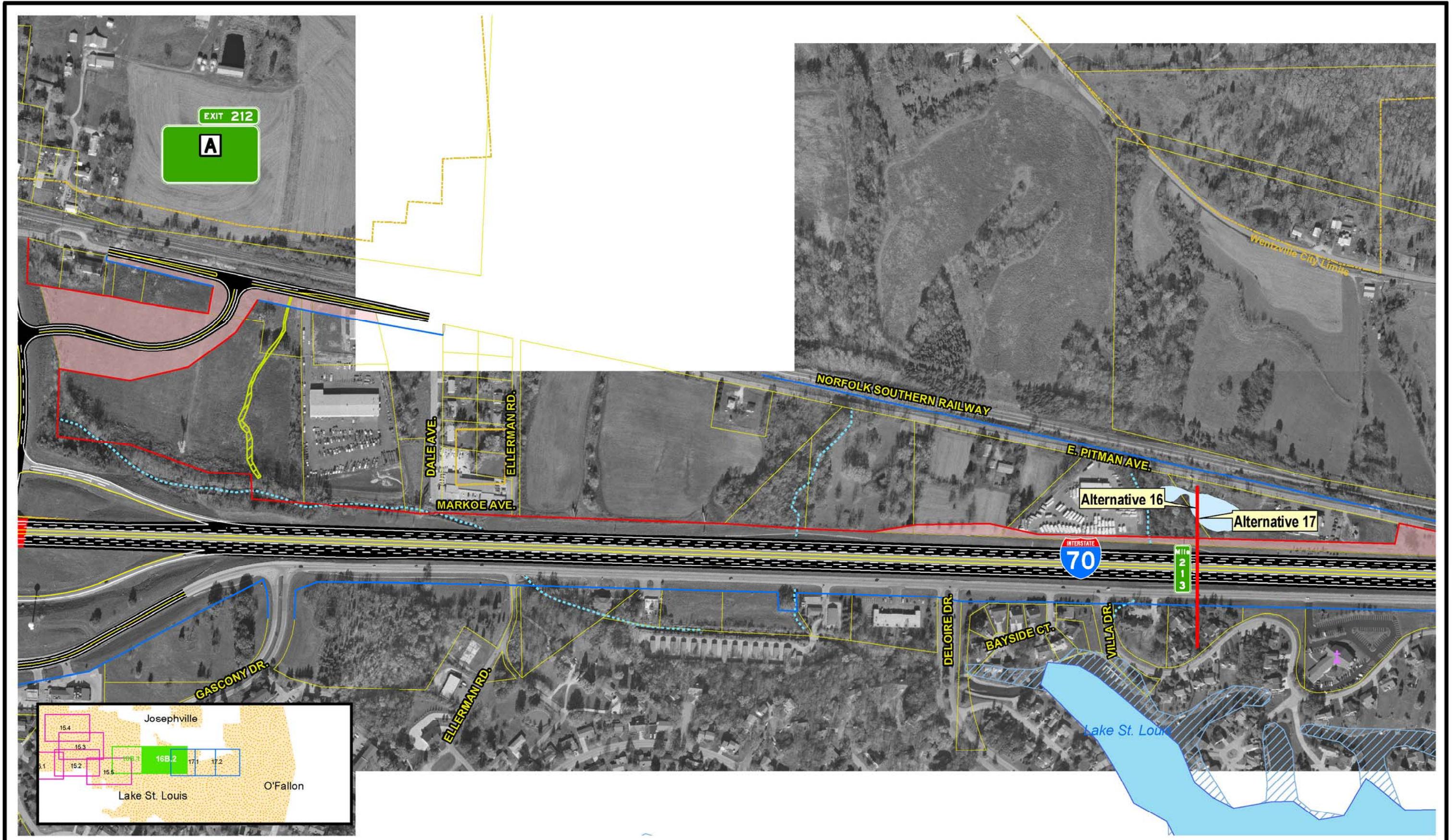
SIU
7
 Route 19
 to
 Lake St. Louis

- | | | | | | |
|---------------------------|---------------|-----------------------|-------------------------------|--|-----------------------------|
| — Limited Access R/W | — City Limits | ▲ Schools | — Lakes | — Existing Pavement to Remain | — Intermittent Streams |
| — Right-In, Right-Out R/W | — Cemeteries | ▲ Hazardous Materials | — Jurisdictional Ponds | — NRHP Eligible Resource (w/MoDOT Resource Number) | — Perennial Streams |
| — Normal R/W | — Churches | — Parks | — Jurisdictional Wetlands | — Parcel Boundary | — Residential Displacements |
| — Proposed Bridge | — Hospitals | — Floodplains | — Non-Jurisdictional Wetlands | | — Commercial Displacements |
| | | | | | — Land Acquisition |

Widening Improvements to Existing Corridor- Alternative 16B

EXHIBIT 16B.1

Scale: 1" = 400'



SIU
7
Route 19
to
Lake St. Louis

- | | | | | | |
|---------------------------|---------------|-----------------------|-------------------------------|--|-----------------------------|
| — Limited Access R/W | — City Limits | ▲ Schools | — Lakes | — Existing Pavement to Remain | — Intermittent Streams |
| — Right-In, Right-Out R/W | — Cemeteries | ▲ Hazardous Materials | — Jurisdictional Ponds | — NRHP Eligible Resource (w/MoDOT Resource Number) | — Perennial Streams |
| — Normal R/W | — Churches | — Parks | — Jurisdictional Wetlands | — Parcel Boundary | — Residential Displacements |
| — Proposed Bridge | — Hospitals | — Floodplains | — Non-Jurisdictional Wetlands | | — Commercial Displacements |
| | | | | | — Land Acquisition |

Widening Improvements to Existing Corridor- Alternative 16B

EXHIBIT 16B.2

Scale: 1" = 400'