

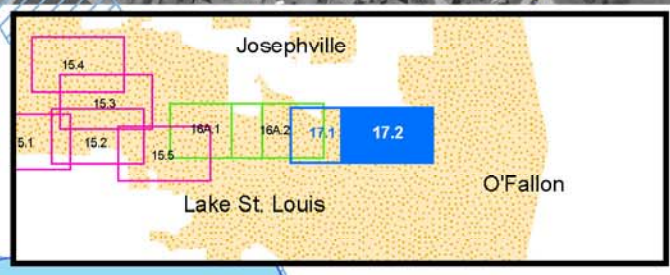
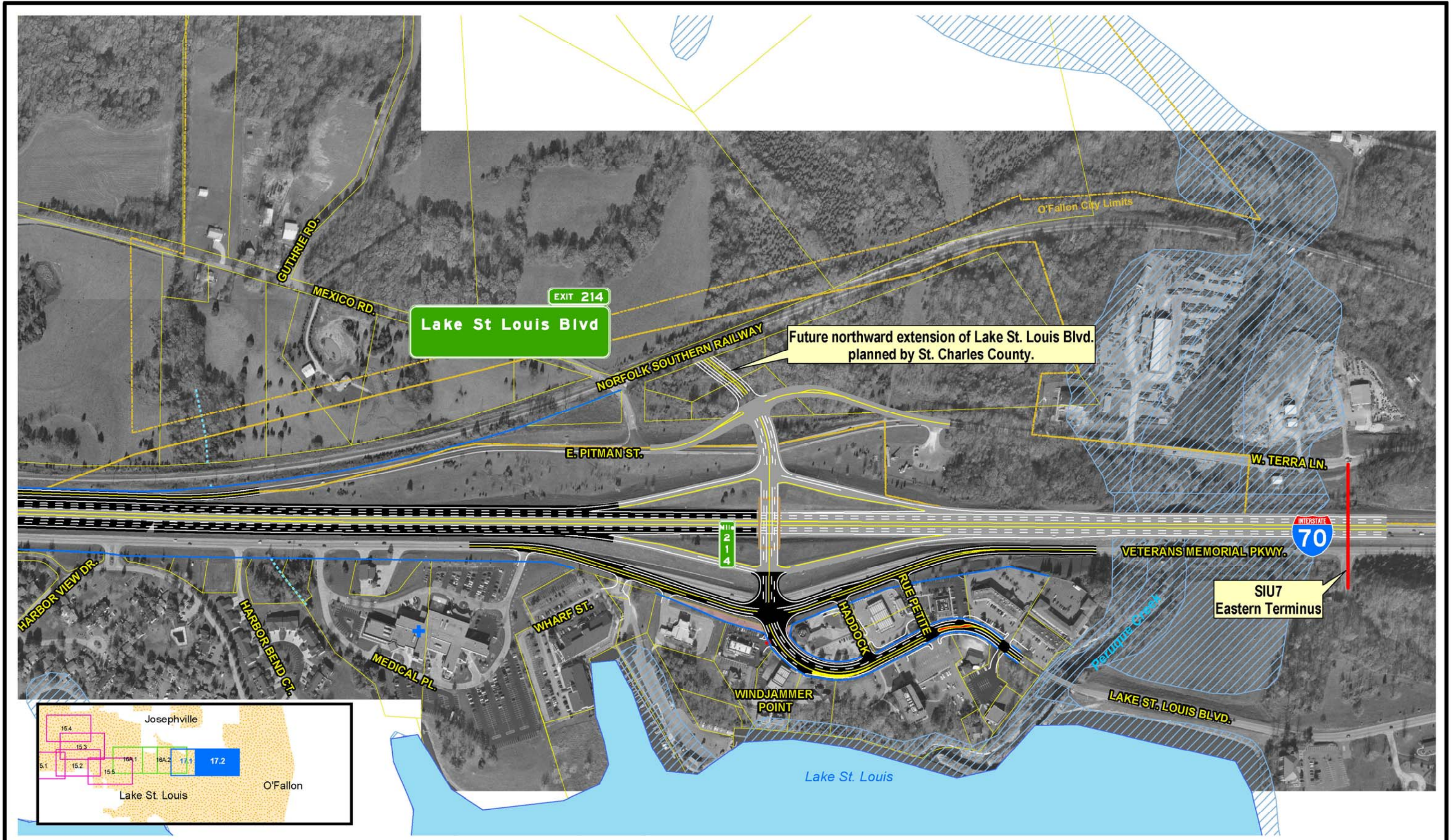
SIU  
7  
Route 19  
to  
Lake St. Louis

— Limited Access R/W	— City Limits	▲ Schools	■ Lakes	■ Existing Pavement to Remain	⋯ Intermittent Streams
— Right-In, Right-Out R/W	⊕ Cemeteries	▲ Hazardous Materials	■ Jurisdictional Ponds	■ NRHP Eligible Resource (w/MoDOT Resource Number)	— Perennial Streams
— Normal R/W	⊕ Churches	■ Parks	■ Jurisdictional Wetlands	■ Parcel Boundary	■ Residential Displacements
— Proposed Bridge	⊕ Hospitals	■ Floodplains	■ Non-Jurisdictional Wetlands		■ Commercial Displacements
					■ Land Acquisition

Scale: 1" = 400'

**Widening Improvements to Existing Corridor- Alternative 17 (Preferred)**

**EXHIBIT 17.1**



SIU  
7  
Route 19  
to  
Lake St. Louis

- |                           |               |                       |                               |  |                             |
|---------------------------|---------------|-----------------------|-------------------------------|--|-----------------------------|
| — Limited Access R/W      | — City Limits | ▲ Schools             | — Lakes                       | — Existing Pavement to Remain                      | — Intermittent Streams      |
| — Right-In, Right-Out R/W | — Cemeteries  | ▲ Hazardous Materials | — Jurisdictional Ponds        | — NRHP Eligible Resource (w/MoDOT Resource Number) | — Perennial Streams         |
| — Normal R/W              | — Churches    | — Parks               | — Jurisdictional Wetlands     | — Parcel Boundary                                  | — Residential Displacements |
| — Proposed Bridge         | — Hospitals   | — Floodplains         | — Non-Jurisdictional Wetlands |  | — Commercial Displacements  |
|                           |               |                       |                               |  | — Land Acquisition          |

Widening Improvements to Existing Corridor- Alternative 17 (Preferred)

EXHIBIT 17.2

