

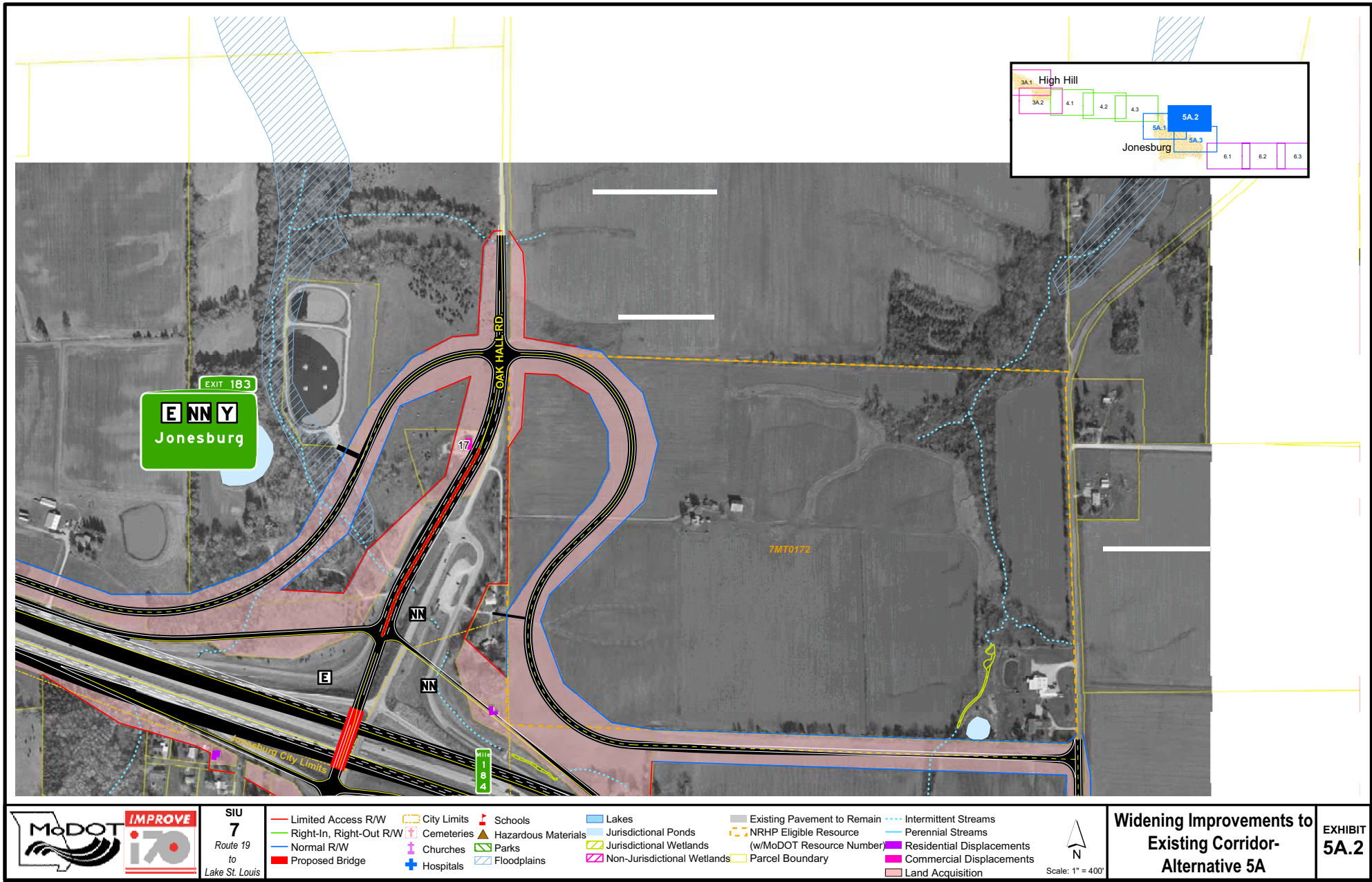
SIU
7
Route 19
to
Lake St. Louis

— Limited Access R/W	City Limits	Schools	Lakes	Existing Pavement to Remain	Intermittent Streams
— Right-In, Right-Out R/W	Cemeteries	Hazardous Materials	Jurisdictional Ponds	NRHP Eligible Resource	Perennial Streams
— Normal R/W	Churches	Parks	Jurisdictional Wetlands	(w/MoDOT Resource Number)	Residential Displacement
— Proposed Bridge	Hospitals	Floodplains	Non-Jurisdictional Wetlands	Parcel Boundary	Commercial Displacement
					Land Acquisition

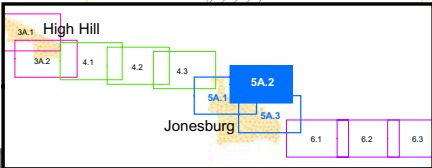
Widening Improvements to Existing Corridor - Alternative 5A

EXHIBIT 5A.1





EXIT 183
E N N Y
 Jonesburg



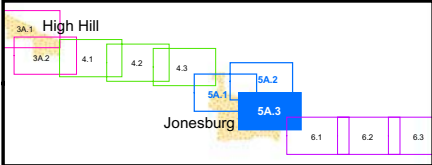
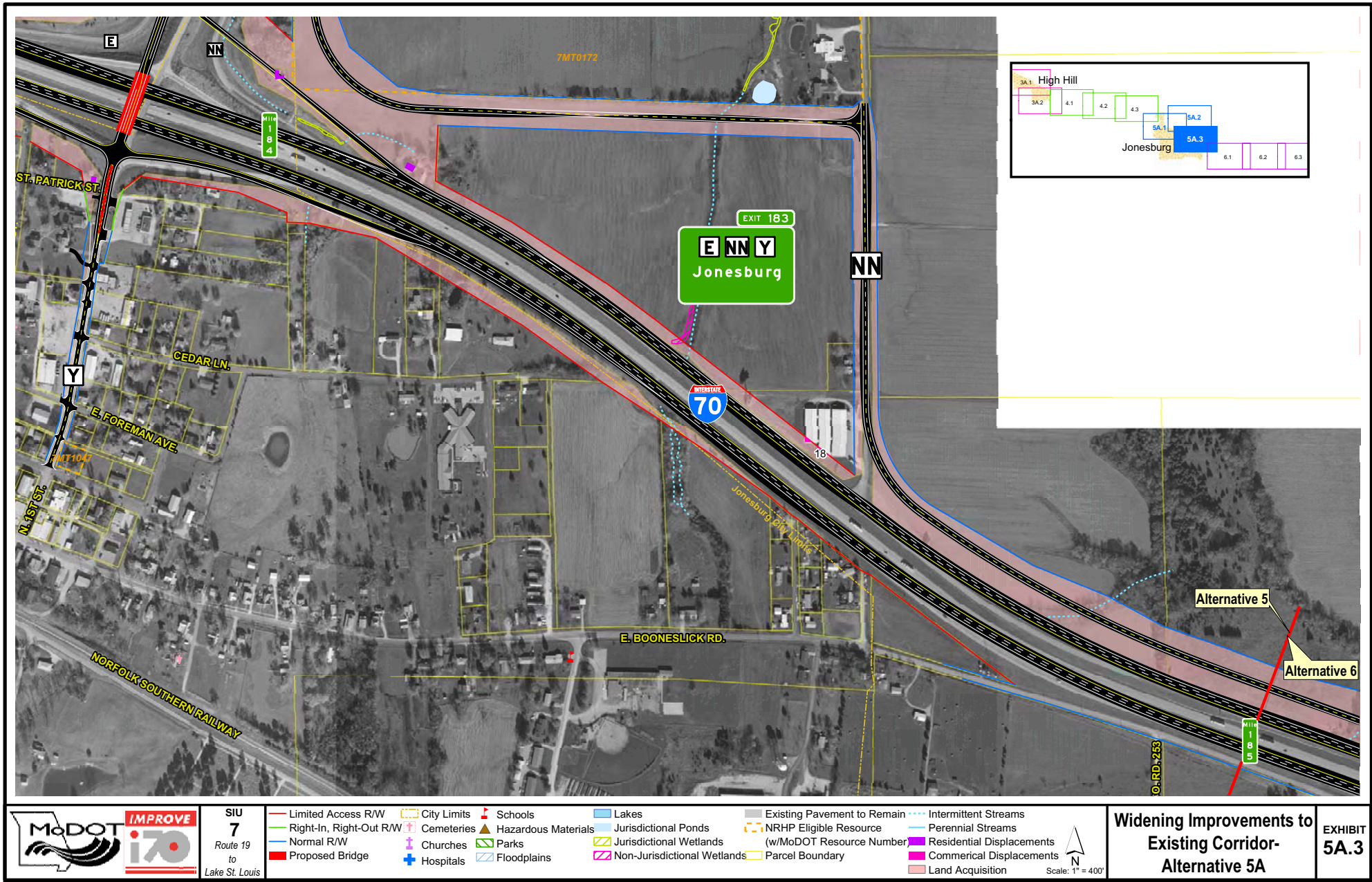
SIU
7
 Route 19
 to
 Lake St. Louis

- Limited Access R/W
- Right-In, Right-Out R/W
- Normal R/W
- Proposed Bridge
- City Limits
- Cemeteries
- Churches
- Hospitals
- Schools
- Hazardous Materials
- Parks
- Floodplains
- Lakes
- Jurisdictional Ponds
- Jurisdictional Wetlands
- Non-Jurisdictional Wetlands
- Existing Pavement to Remain
- NRHP Eligible Resource (w/MoDOT Resource Number)
- Intermittent Streams
- Perennial Streams
- Residential Displacements
- Commercial Displacements
- Land Acquisition
- Parcel Boundary

Scale: 1" = 400'

Widening Improvements to Existing Corridor- Alternative 5A

EXHIBIT 5A.2



SIU
7
Route 19
to
Lake St. Louis

— Limited Access R/W	— City Limits	▲ Schools	— Lakes	— Existing Pavement to Remain	— Intermittent Streams
— Right-In, Right-Out R/W	— Cemeteries	▲ Hazardous Materials	— Jurisdictional Ponds	— NRHP Eligible Resource	— Perennial Streams
— Normal R/W	— Churches	▲ Parks	— Jurisdictional Wetlands	(w/MoDOT Resource Number)	— Residential Displacements
— Proposed Bridge	— Hospitals	— Floodplains	— Non-Jurisdictional Wetlands	— Parcel Boundary	— Commercial Displacements
					— Land Acquisition

Scale: 1" = 400'

Widening Improvements to Existing Corridor - Alternative 5A

EXHIBIT 5A.3