

**Widening Improvements to Existing Corridor - Alternative 5B**

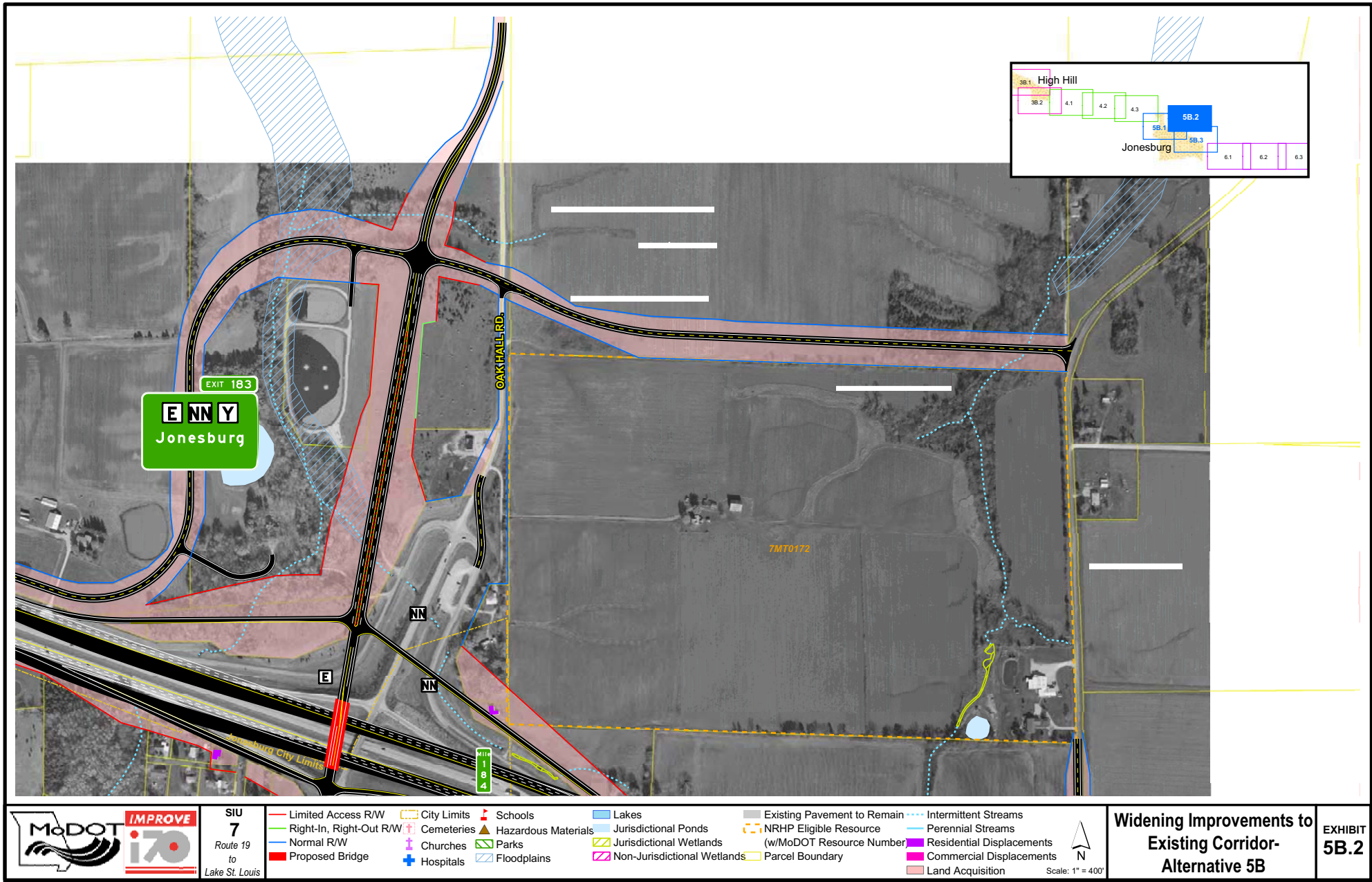
**EXHIBIT 5B.1**

**SIU 7**  
Route 19 to Lake St. Louis

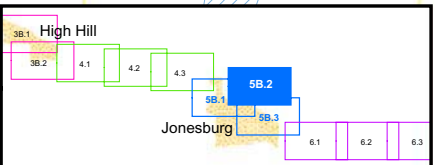


- Limited Access R/W
- Right-In, Right-Out R/W
- Normal R/W
- Proposed Bridge
- City Limits
- + Cemeteries
- + Churches
- + Hospitals
- + Schools
- + Hazardous Materials
- + Parks
- + Floodplains
- + Lakes
- + Jurisdictional Ponds
- + Jurisdictional Wetlands
- + Non-Jurisdictional Wetlands
- + Existing Pavement to Remain
- + NRHP Eligible Resource (w/MoDOT Resource Number)
- + Parcel Boundary
- +··· Intermittent Streams
- +··· Perennial Streams
- + Residential Displacements
- + Commercial Displacements
- + Land Acquisition





EXIT 183  
**ENNY**  
 Jonesburg



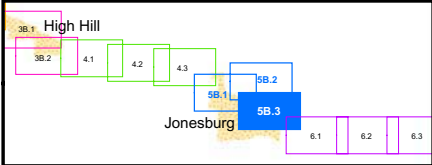
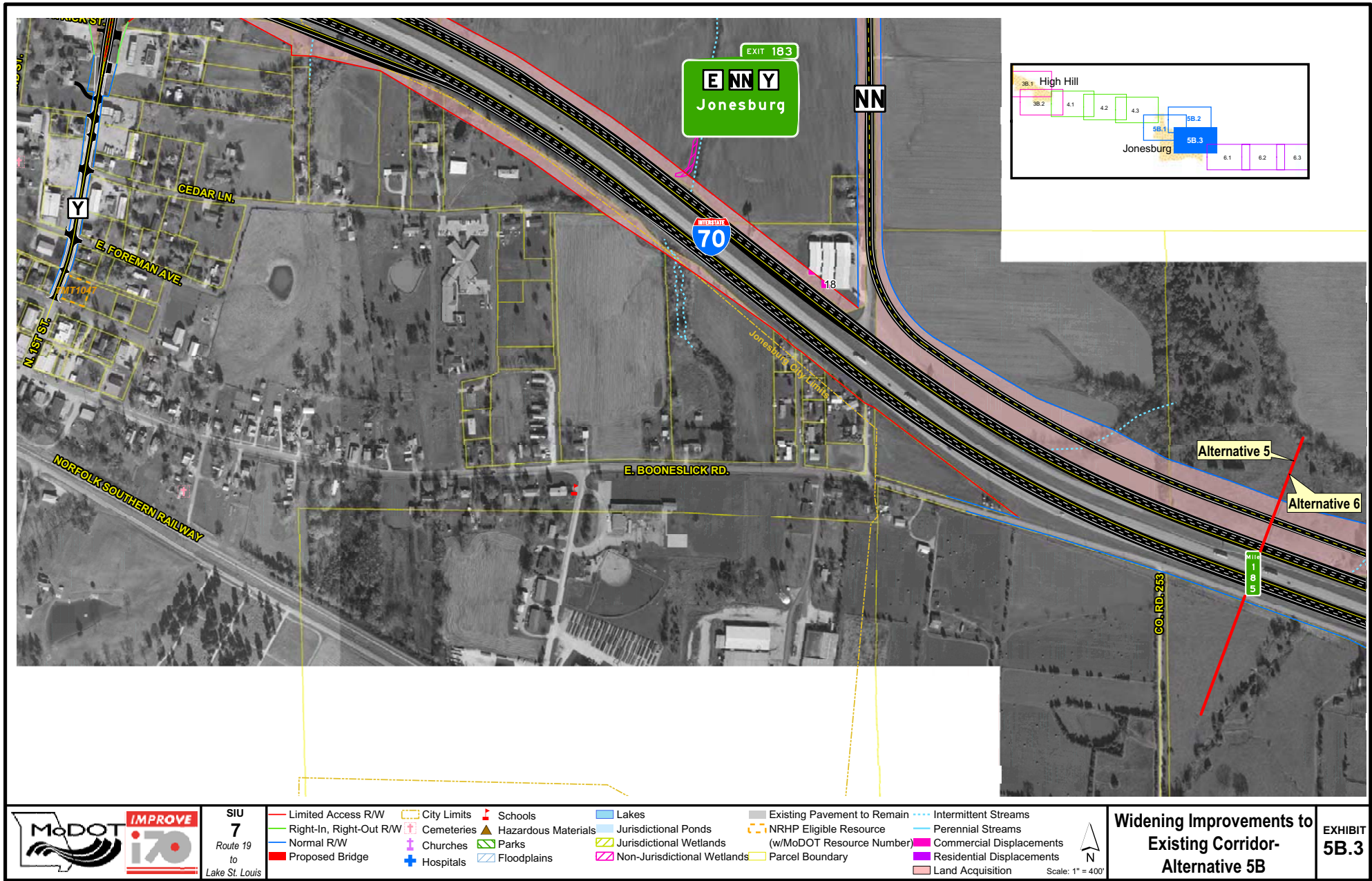
SIU  
**7**  
 Route 19  
 to  
 Lake St. Louis

- |                           |               |                       |                               |                               |                             |
|---------------------------|---------------|-----------------------|-------------------------------|-------------------------------|-----------------------------|
| — Limited Access R/W      | — City Limits | 🏫 Schools             | 🌊 Lakes                       | 🏠 Existing Pavement to Remain | ⋯ Intermittent Streams      |
| — Right-In, Right-Out R/W | ⚰ Cemeteries  | ⚠ Hazardous Materials | 🌊 Jurisdictional Ponds        | 🏠 NRHP Eligible Resource      | — Perennial Streams         |
| — Normal R/W              | ⛪ Churches    | 🌳 Parks               | 🌊 Jurisdictional Wetlands     | (w/MoDOT Resource Number)     | 🏠 Residential Displacements |
| 🌉 Proposed Bridge         | 🏥 Hospitals   | 🌊 Floodplains         | 🌊 Non-Jurisdictional Wetlands | 🏠 Parcel Boundary             | 🏠 Commercial Displacements  |
|                           |               |                       |                               |                               | 🏠 Land Acquisition          |

Scale: 1" = 400'

**Widening Improvements to  
 Existing Corridor-  
 Alternative 5B**

**EXHIBIT  
 5B.2**



SIU  
7  
Route 19  
to  
Lake St. Louis

— Limited Access R/W	— City Limits	▲ Schools	— Lakes	— Existing Pavement to Remain	— Intermittent Streams
— Right-In, Right-Out R/W	— Cemeteries	▲ Hazardous Materials	— Jurisdictional Ponds	— NRHP Eligible Resource	— Perennial Streams
— Normal R/W	— Churches	▲ Parks	— Jurisdictional Wetlands	(w/MoDOT Resource Number)	— Commercial Displacements
— Proposed Bridge	— Hospitals	— Floodplains	— Non-Jurisdictional Wetlands	— Parcel Boundary	— Residential Displacements
					— Land Acquisition

Widening Improvements to  
Existing Corridor-  
Alternative 5B

EXHIBIT  
5B.3

Scale: 1" = 400'