

SIU  
**7**  
 Route 19  
 to  
 Lake St. Louis

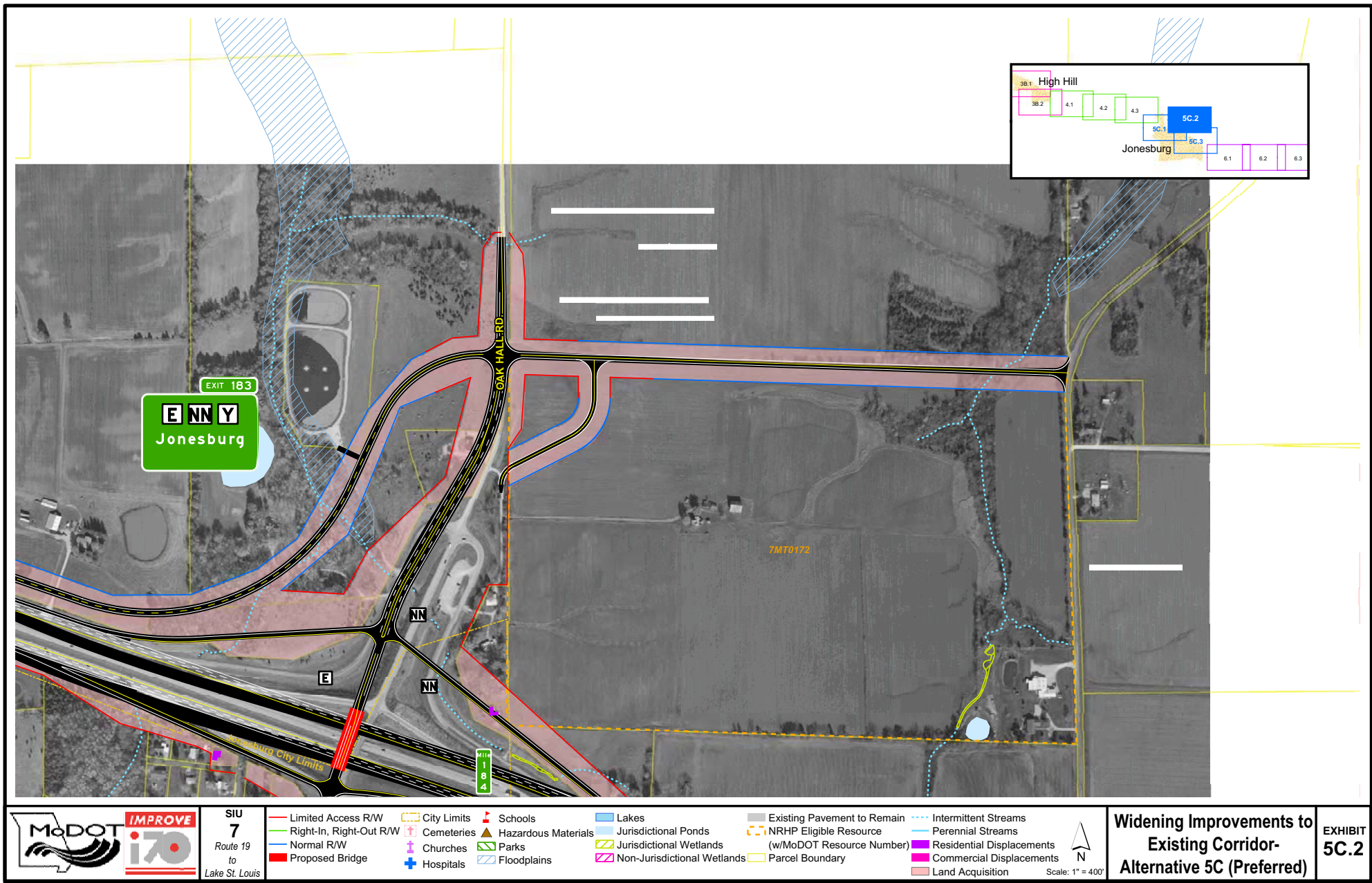
Limited Access R/W	City Limits	Schools	Lakes	Existing Pavement to Remain	Intermittent Streams
Right-In, Right-Out R/W	Cemeteries	Hazardous Materials	Jurisdictional Ponds	NRHP Eligible Resource	Perennial Streams
Normal R/W	Churches	Parks	Jurisdictional Wetlands	(w/MoDOT Resource Number)	Residential Displacements
Proposed Bridge	Hospitals	Floodplains	Non-Jurisdictional Wetlands	Parcel Boundary	Commercial Displacements
					Land Acquisition

**Widening Improvements to Existing Corridor- Alternative 5C (Preferred)**

**EXHIBIT 5C.1**







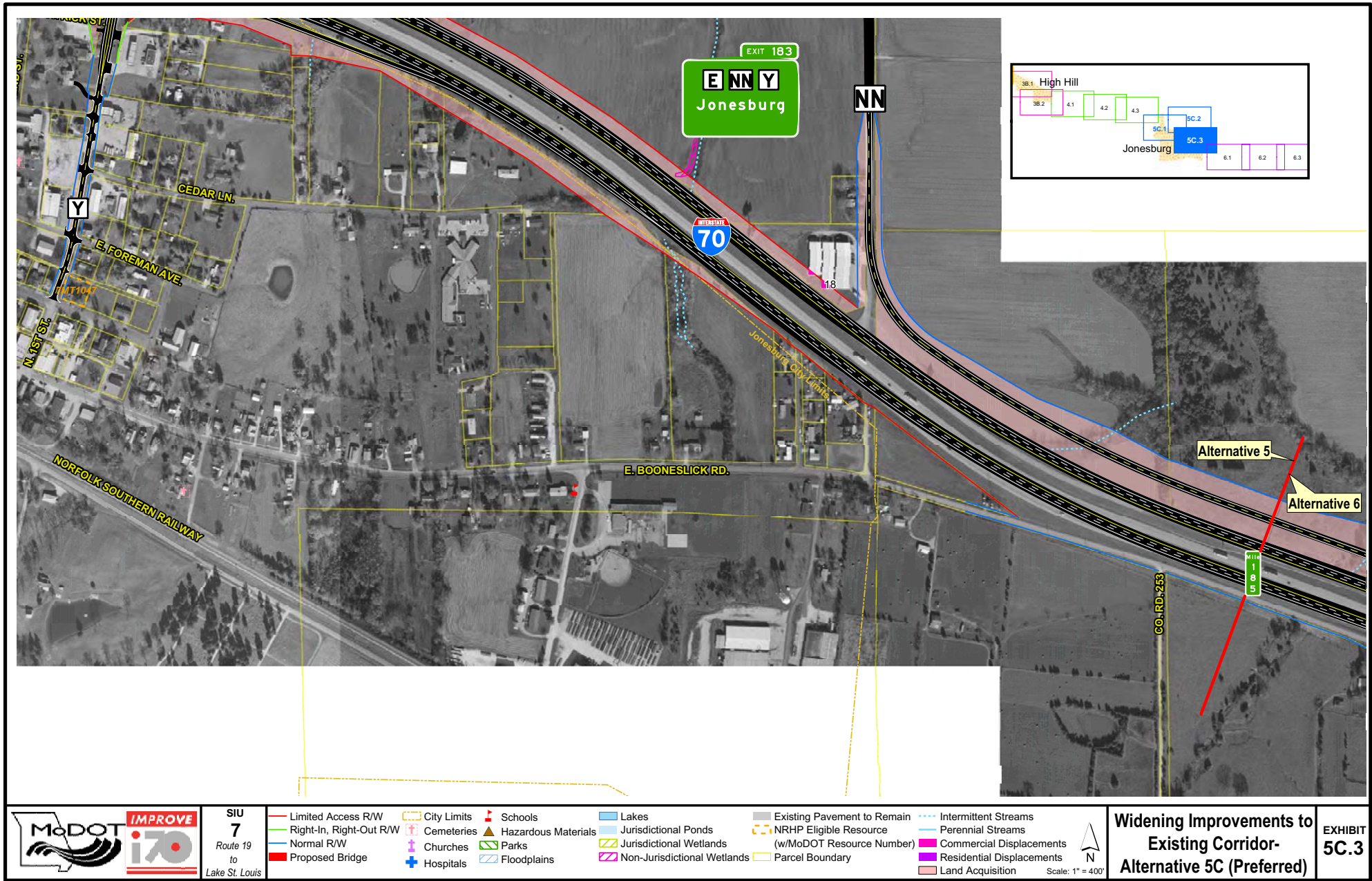
SIU  
7  
Route 19  
to  
Lake St. Louis

- |                           |               |                       |                               |                               |                             |
|---------------------------|---------------|-----------------------|-------------------------------|-------------------------------|-----------------------------|
| — Limited Access R/W      | — City Limits | 🏫 Schools             | 🌊 Lakes                       | 🏠 Existing Pavement to Remain | ⋯ Intermittent Streams      |
| — Right-In, Right-Out R/W | ⚰ Cemeteries  | ⚠ Hazardous Materials | 🌊 Jurisdictional Ponds        | 🏠 NRHP Eligible Resource      | — Perennial Streams         |
| — Normal R/W              | ⛪ Churches    | 🌳 Parks               | 🌊 Jurisdictional Wetlands     | (w/MoDOT Resource Number)     | 🏠 Residential Displacements |
| 🌉 Proposed Bridge         | 🏥 Hospitals   | 🌊 Floodplains         | 🌊 Non-Jurisdictional Wetlands | 📐 Parcel Boundary             | 🏠 Commercial Displacements  |
|                           |               |                       |                               |                               | 🏠 Land Acquisition          |

**Widening Improvements to Existing Corridor- Alternative 5C (Preferred)**

**EXHIBIT 5C.2**





SIU  
7  
Route 19  
to  
Lake St. Louis

Limited Access R/W	City Limits	Schools	Lakes	Existing Pavement to Remain	Intermittent Streams
Right-In, Right-Out R/W	Cemeteries	Hazardous Materials	Jurisdictional Ponds	NRHP Eligible Resource	Perennial Streams
Normal R/W	Churches	Parks	Jurisdictional Wetlands	(w/MoDOT Resource Number)	Commercial Displacements
Proposed Bridge	Hospitals	Floodplains	Non-Jurisdictional Wetlands	Parcel Boundary	Residential Displacements
					Land Acquisition

Widening Improvements to  
Existing Corridor-  
Alternative 5C (Preferred)

EXHIBIT  
5C.3

