

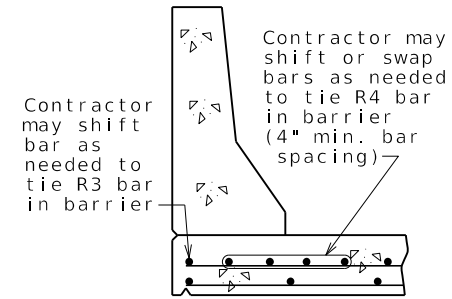
Standard Drawing Guidance
(do not show on plans):

- ① Remove if not required.
- ② Use the following values for clearance to top longitudinal bars:
 - 3 1/8" for #5 bars
 - 3" for #6 bars
 - 2 7/8" for #7 bars
 - 2 3/4" for #8 bars
 Use a triple asterisk when there are different size top bars and add below the single asterisk note the following (modified as needed)(this will be the only asterisk note for CIP decks):

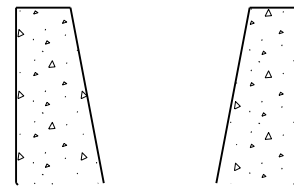
- *** 3 1/8" (#5)
- 3" (#6)
- 2 7/8" (#7)
- 2 3/4" (#8)

Clearance values based on the #6 top transverse bar used for this standard slab. Values will need to be revised for other size transverse bars.

- ③ The larger negative moment reinforcement shown is grouped and can be deleted if the negative moment steel is the same size as the distribution reinforcement. A set of bars the same size as the distribution bars exist behind the larger bars shown, and will become visible when the larger bars are deleted. (No need to resize)
- ④ The subheadings and negative moment bars are grouped and can be deleted for single span bridges. <Ctrl> U to ungroup
- ⑤ Place appropriate slab pouring sequence cell and modify as required.
- ⑥ Use alternate detail for CIP decks:

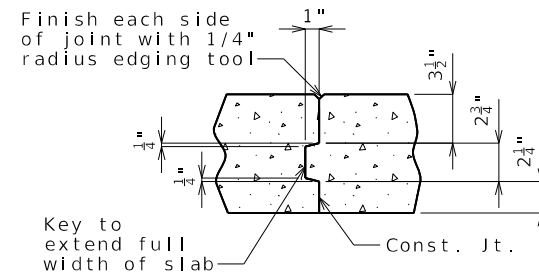


OPTIONAL SHIFTING
TOP BARS AT BARRIER



Alternate detail for
Type H barrier

For 8" thick slabs, change top dimension to 3 1/4" and center dimension to 2 1/2".

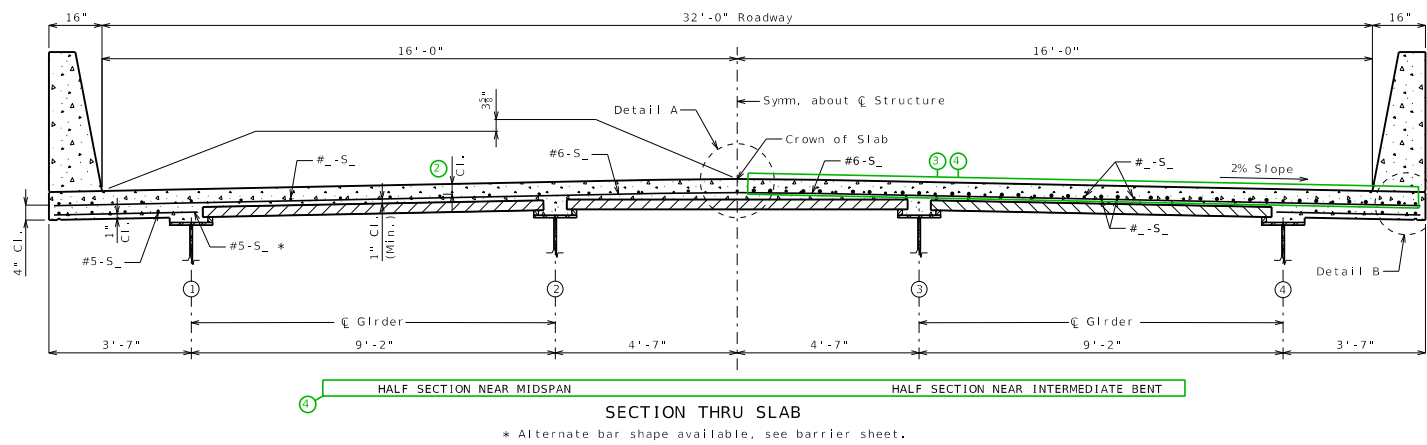


SLAB CONSTRUCTION JOINT

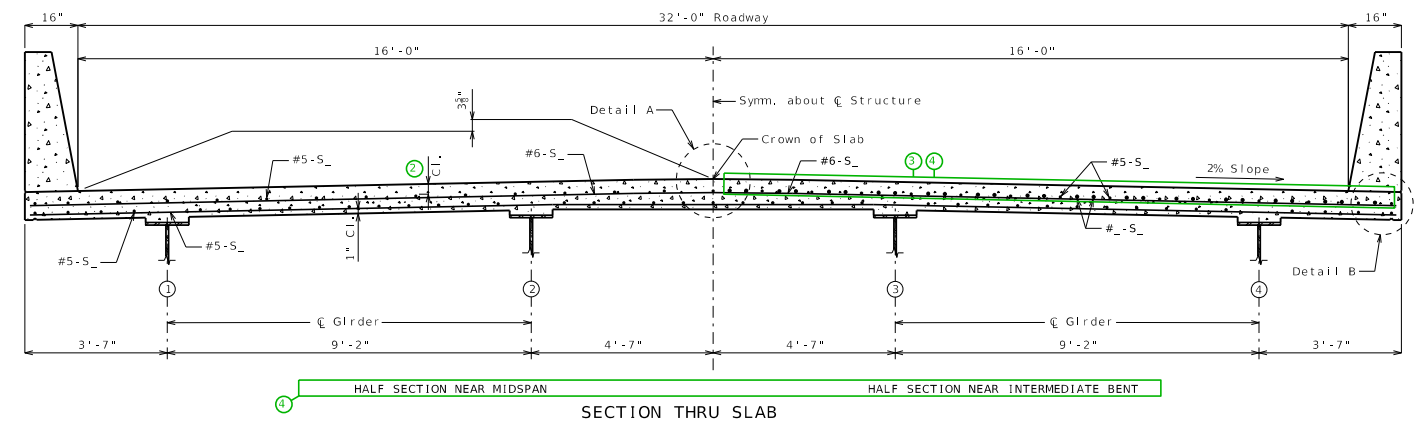
- ⑦ Remove for CIP deck
- Girder spacing and reinforcement size & spacing shown are not necessarily standard. Follow design.

4-Beam Panel Deck

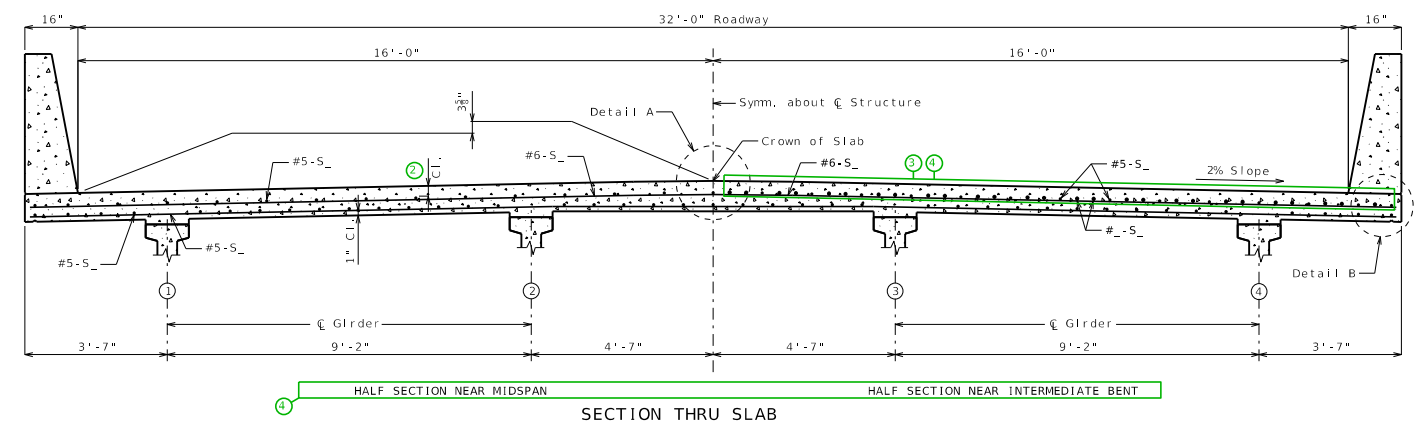
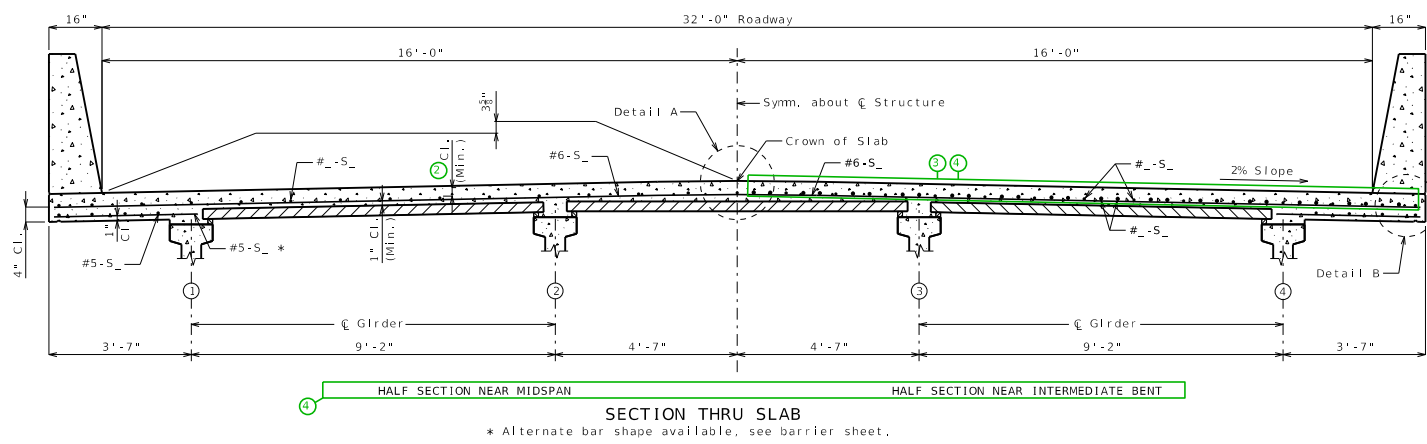
Plate Girder



4-Beam CIP Deck



Type 2,3,4



Type 6

