

**Champ
Clark
BRIDGE**
U.S. 54 OVER THE MISSISSIPPI RIVER



Purpose and Need

- *This 1928 bridge is in poor condition and functionally obsolete.*
- *The 54/79 intersection does not function well.*
- *Rte 54 creates a notch in the Sny Levee making the roadway unreliable during flood events.*



Project Goals

- Meet or beat the project open to traffic date of November 1, 2019.
- Deliver a project on budget that supports everyday commuters and freight.
- Construct a safe, low maintenance Mississippi River Bridge that will provide at least a century of service.
- Minimize and mitigate construction impacts and maximize work zone safety to customers and workers.
- Deliver the project using a diverse workforce by use of innovative techniques.
- Demonstrate a commitment to quality.

Project Budget

- Program Budget - \$68.2 Million
 - Preliminary Engineering
 - Right of Way
 - Utilities
 - Stipends
 - \$1 Million Incentive
- Design-Build Contract
 - \$62.5 Million Available to the Design-Build Team
 - Includes \$10 Million TIGER Grant
 - Funding Split with IDOT

Design-Build Schedule

1/6/17	Industry Meeting - RFQ and Draft ITP Released
2/3/17	Short-listed Teams Announced
3/1/17	RFP Released
3/13 to 5/18/17	1 on 1 Meetings
6/9/17	Proposals Due
6/29/17	Award of Apparent Best Value Proposal

DBE, Workforce, and On-the-Job training Goals

- DBE Goals
 - 12% for Construction Activities
 - 16% for Professional/Design Activities
- Federal Workforce Goals per Craft
 - 3.1% Minority
 - 6.9% Female
- On-The-Job Training Goals:
 - Two 1000 Hour Slots for Construction
 - One 1000 Hour Slot for Professional Services

Scoring Categories

- Project Definition 50 points
- Schedule & MOT 25 points
- Quality & Safety 10 points
- Community Involvement & Diversity 5 points
- Price Allocation 10 points

Project Definition Evaluation Criteria (50 points)

- Century of Service Bridge
- Minimal Maintenance
- Ease of Inspection
- Intersection Improvements
- Bridge Width



Schedule & Maintenance of Traffic (MOT) Evaluation Criteria (25 points)

- Meet or Beat Open to Traffic Date of November 1, 2019
- Impacts to Stakeholders
- Public Goodwill
- Minimum Business Disruptions
- Minimum Duration of Closures



Quality and Safety Evaluation Criteria (10 points)

- Commitment to Quality
- Traveling Public Safety
- Safety of the Local Residents
- Worker Safety



Community Involvement & Diversity Evaluation Criteria (5 points)

- Commitments to Diversity Inclusion in the Community
- Community Outreach
- Participation in Local Schools



- 12' Driving Lane 10' Shoulder on Bridge
- 8' Shoulder on IL Approach
- Plate Girder Bridge
- Re-striping Intersection



- 12' Driving Lane 10' Shoulder on Bridge
- 8' Shoulder on IL Approach
- Plate Girder Bridge
- Resurface Intersection and 1 Overhead Light

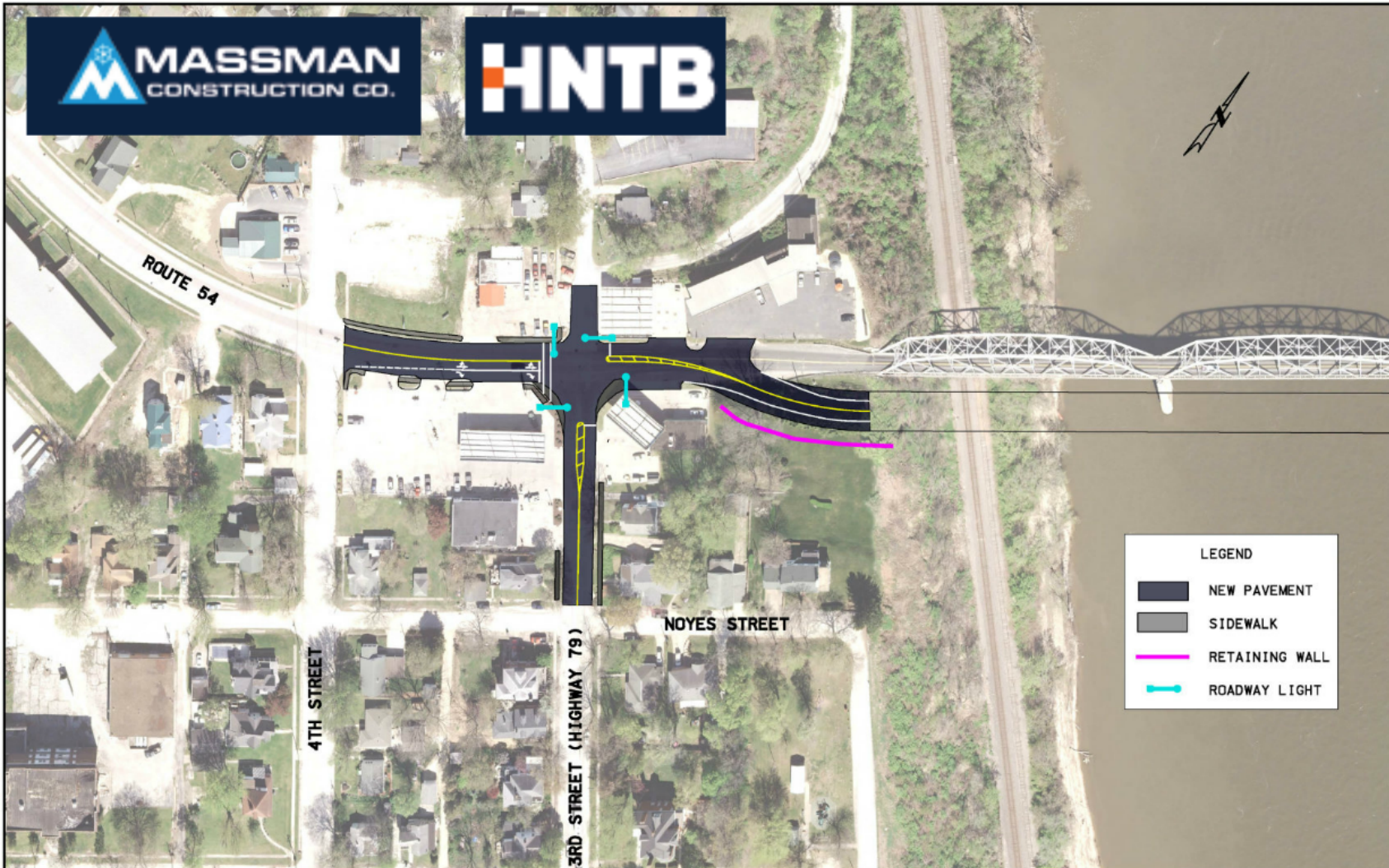
Recommendation

The Team recommends awarding the apparent best value proposal to the following proposer:





- Durable Overlay Extending Life of Deck
- Continuous 12' Lanes 10' Shoulders
- Wider Navigational Spans
- Eliminate Periodic Flood Closures
- Low Maintenance
- Easy to Inspect



- Intersection Lighting - 4 Overhead Lights
- New Overlay in Intersection
- Soil-nail Wall Aesthetics to be Voted on by Community
- Expanded Width to Accommodate Truck Traffic



- **\$2.5 Million Savings**
- **Open to Traffic Fall 2019**
- **100 Year Deck**
- **12' Lanes and 10' Shoulders Throughout**
- **Intersection Improvements Including Full Lighting**
- **Eliminate Periodic Flood Closures**
- **Minimum Disruptions to Traffic**