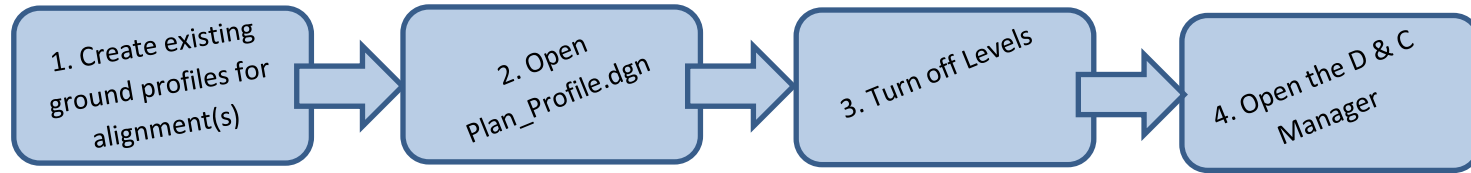


Plan/Profile Sheet Creation

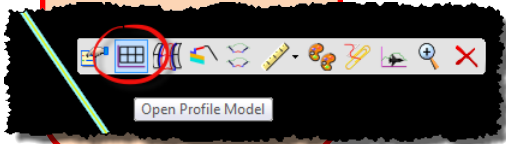
The "Cookie Cutter" style sheet cutting tool is no longer available. This is a workflow to help aid in getting plansheets cut whether cutting a single sheet or multiple sheets using the existing GeoPak Plan & Profile Sheets tool.

1. Create existing ground profiles for alignment(s) in the Civil_Geometry.DGN

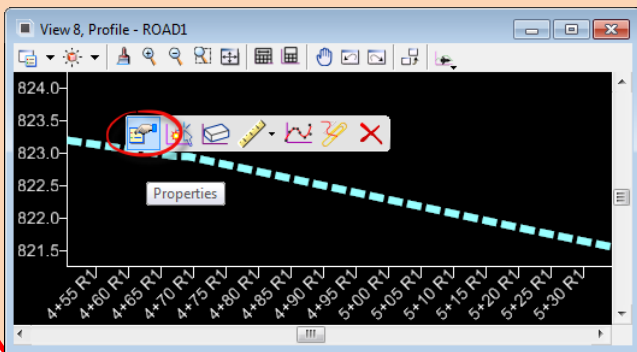


How to create existing ground profiles

1. Open profile view of the horizontal alignment



2. Select the existing ground open the properties and name the profile (alignment)EX



Reference Files

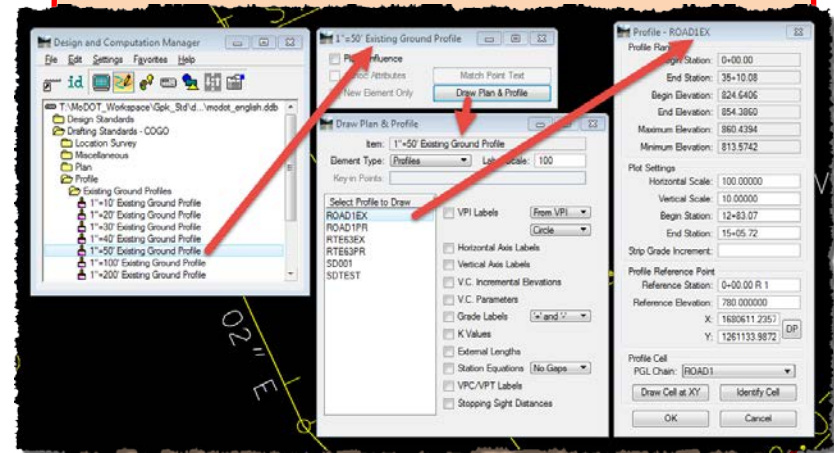
1. Reference in the Civil_Geometry.DGN and Corridor.DGN files

Turn off Levels

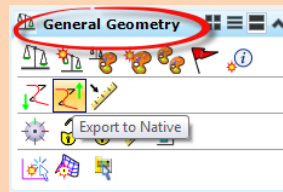
1. Turn off the following levels;
Modeling-Corridor
Boundary-Preliminary &
Modeling-Template
Range-Preliminary in the referenced Corridor.DGN file

Placing Profiles in the DGN

1. Place the existing ground profile using the D & C Manager



3. Export the profile (alignment)EX to native (GPK)



4. Open the D & C Manager (continued)

5. Load the Project Manager

6. Selecting the Plan & Profile sheets tool

6. Laying out and clipping sheets

Placing Profiles in the DGN (continued)

Project Manager

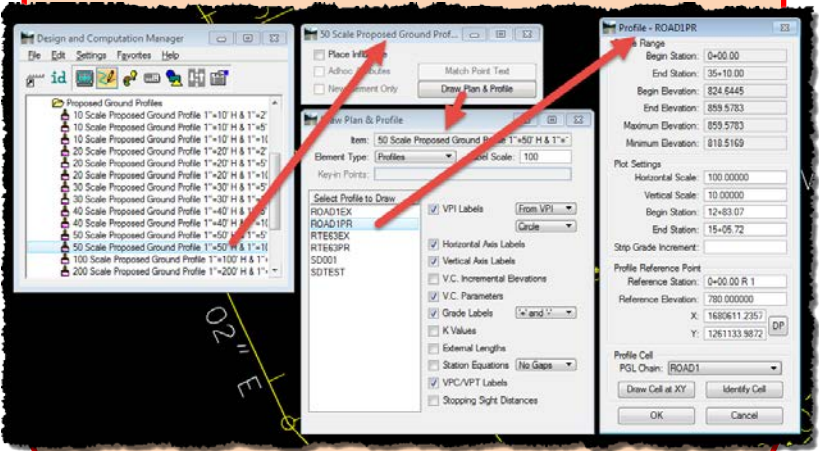
Plan & Profile sheet tool

1. For more information on how to use this tool please reference Chapter 4 of the **GeoPak Plan Preparation** manual through CADD WIKI [Chapter 4 Plan Profile Sheets.pdf](#)

2. Place the proposed ground profile using the D & C Manager

1. Open the Project Manager

1. From the Run pull down select Copy>Run



2. Pick the job PRJ file

2. Pick the Run to copy

3. Select your user ID
This will open the large Road dialog

3. Name the Run and enter the newly copied Run

