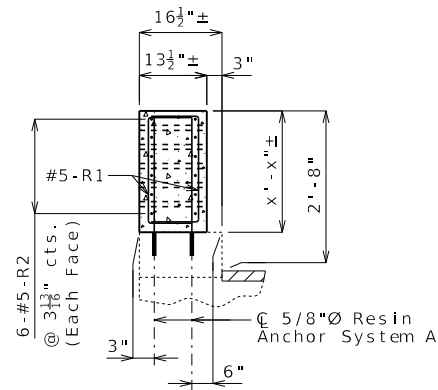
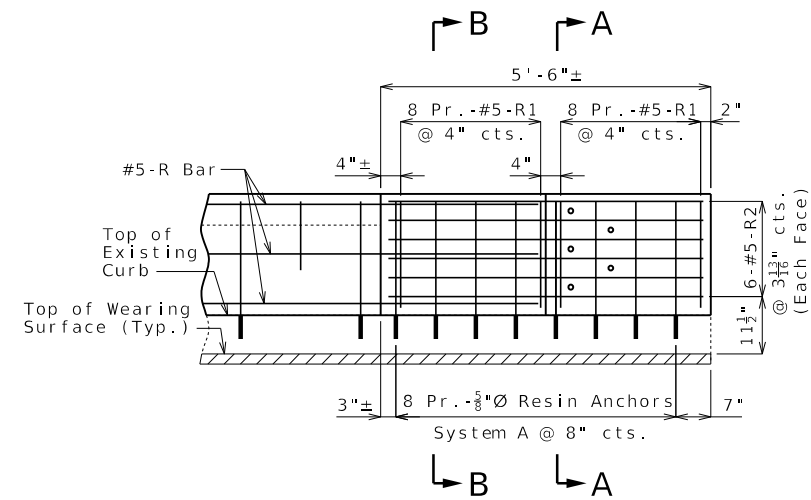


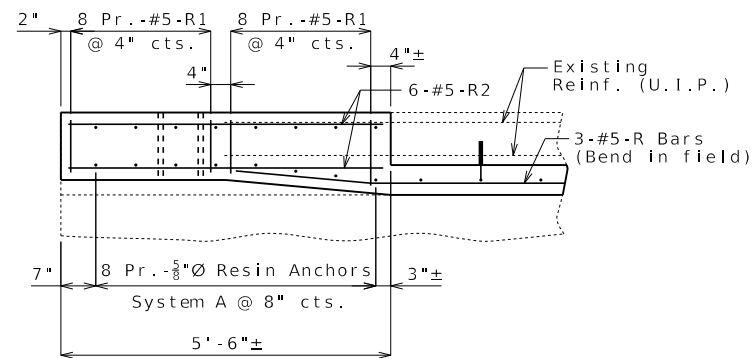
ELEVATION SHOWING REINFORCEMENT
(Right End Post at End Bent No. similar)



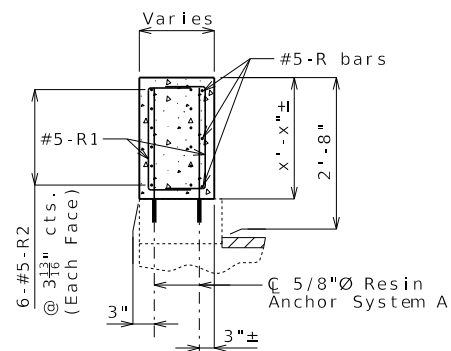
SECTION A-A



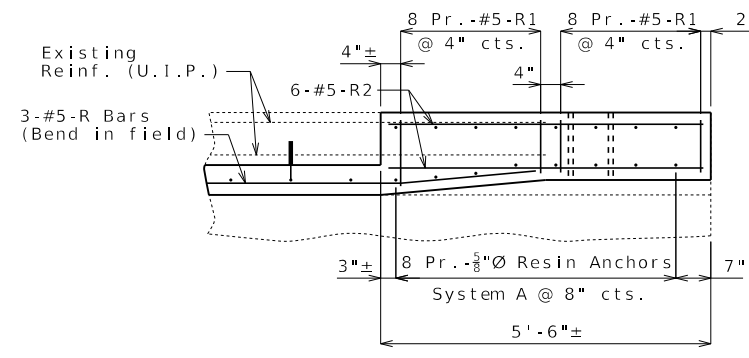
ELEVATION SHOWING REINFORCEMENT
(Right End Post at End Bent No. 1 similar)



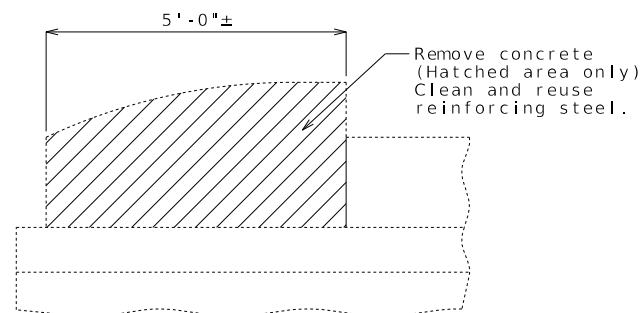
PLAN SHOWING REINFORCEMENT
LEFT END POST AT END BENT NO. 1



SECTION B-B



PLAN SHOWING REINFORCEMENT
LEFT END POST AT END BENT NO.



PART ELEVATION SHOWING END POST
CONCRETE REMOVAL

Cost of removing existing end posts will be considered completely covered by the contract unit price for Curb Blockout.

2'-8" Curb Blockout

These details are meant to be used as a starting point only. Modify as needed.

① Taper front face as gradually as possible, while maintaining 6" minimum thickness of blockout at the end of the existing parapet. 2'-9" maximum taper length.

② Holes may be shifted 12" closer to the end (8" instead of 20") to avoid attaching a rail post to the top of backwall. All other dimensions and reinforcement remain the same.

Longitudinal R bars shall extend 2'-7" minimum into new end post.

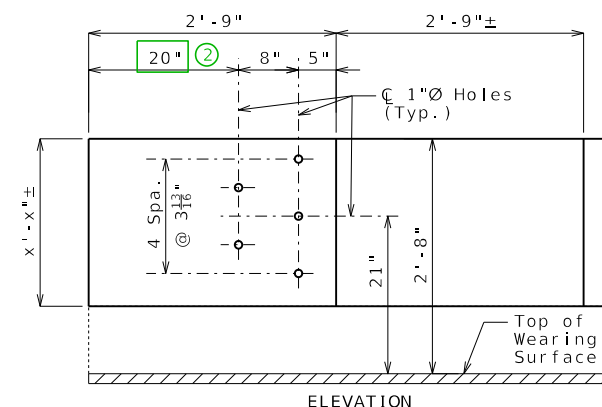
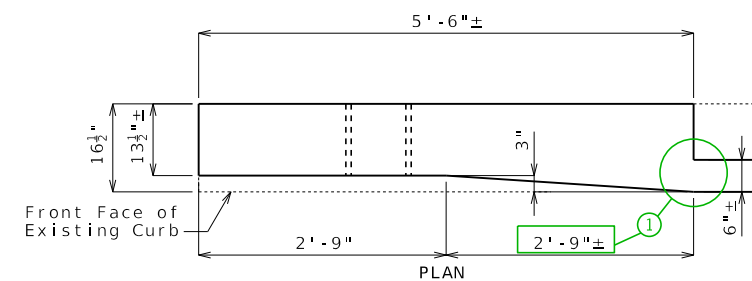
Detach unused border reference file before PDF request.

Notes:

Work this sheet with Sheet No. .

For details of resin anchors, see Sheet No. .

Resin anchors shall be shifted or bent in field to clear one-inch diameter holes by at least 1/2 inch.



ELEVATION
DETAILS OF END POST AND
GUARD RAIL ATTACHMENT

DATE PREPARED		12/30/2024	
ROUTE	STATE	MO	
DISTRICT	SHEET NO.	3	
COUNTY			
JOB NO.			
CONTRACT ID.			
PROJECT NO.			
BRIDGE NO.			

DESCRIPTION	DATE

MISSOURI HIGHWAYS AND TRANSPORTATION
COMMISSION

MoDOT

105 WEST CAPITOL
JEFFERSON CITY, MO 65102
1-888-ASK-MODOT (1-888-275-6636)

CURB BLOCKOUT AT END BENTS

Detailed
Checked

Note: This drawing is not to scale. Follow dimensions.

Sheet No. of