

PLANNING UPDATE

Eric J. Curtit, AICP

Transportation Planning Director

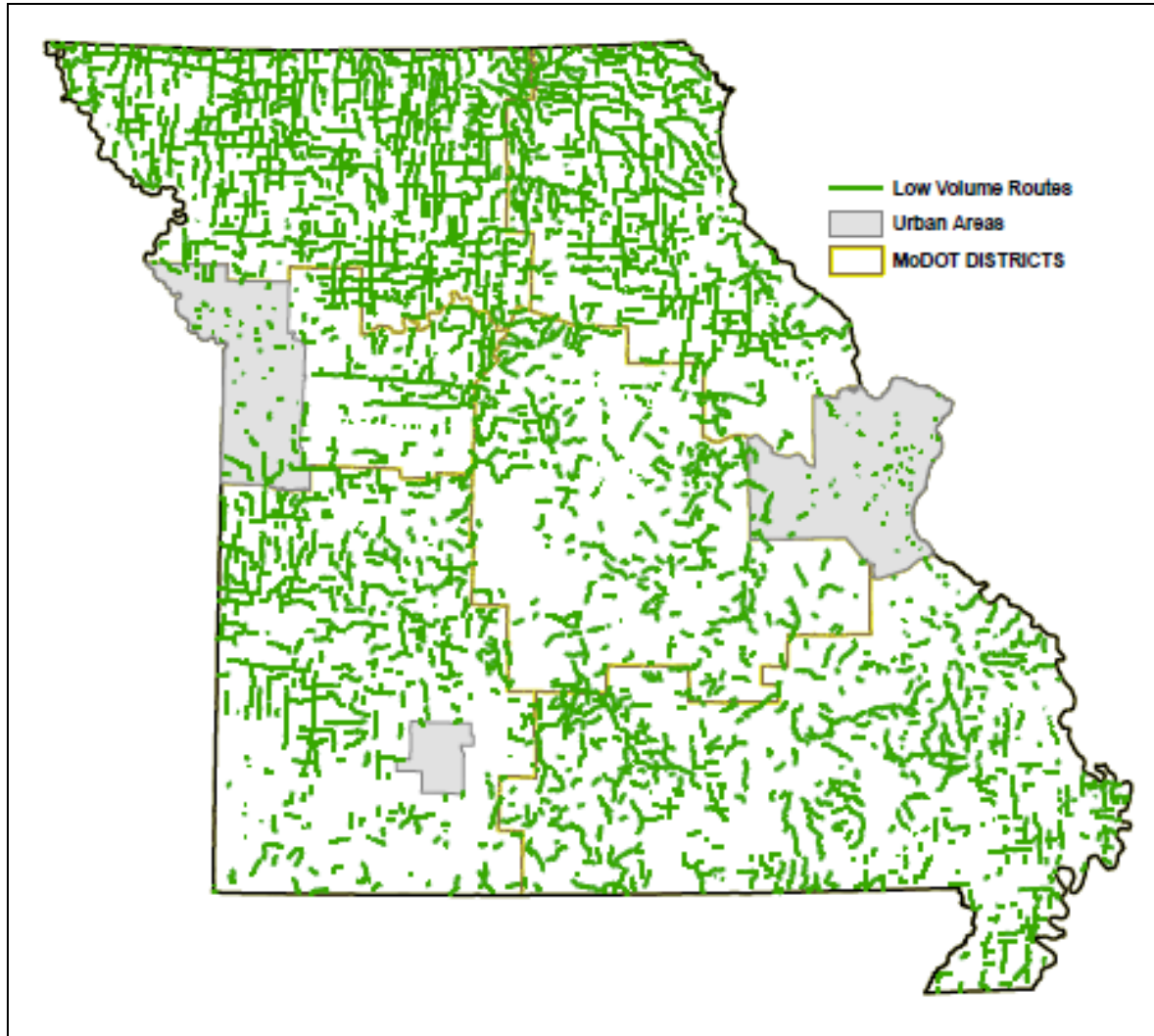


Updates

- Asset Management
- High Priority Unfunded Needs Timing
- Bike Ped policy



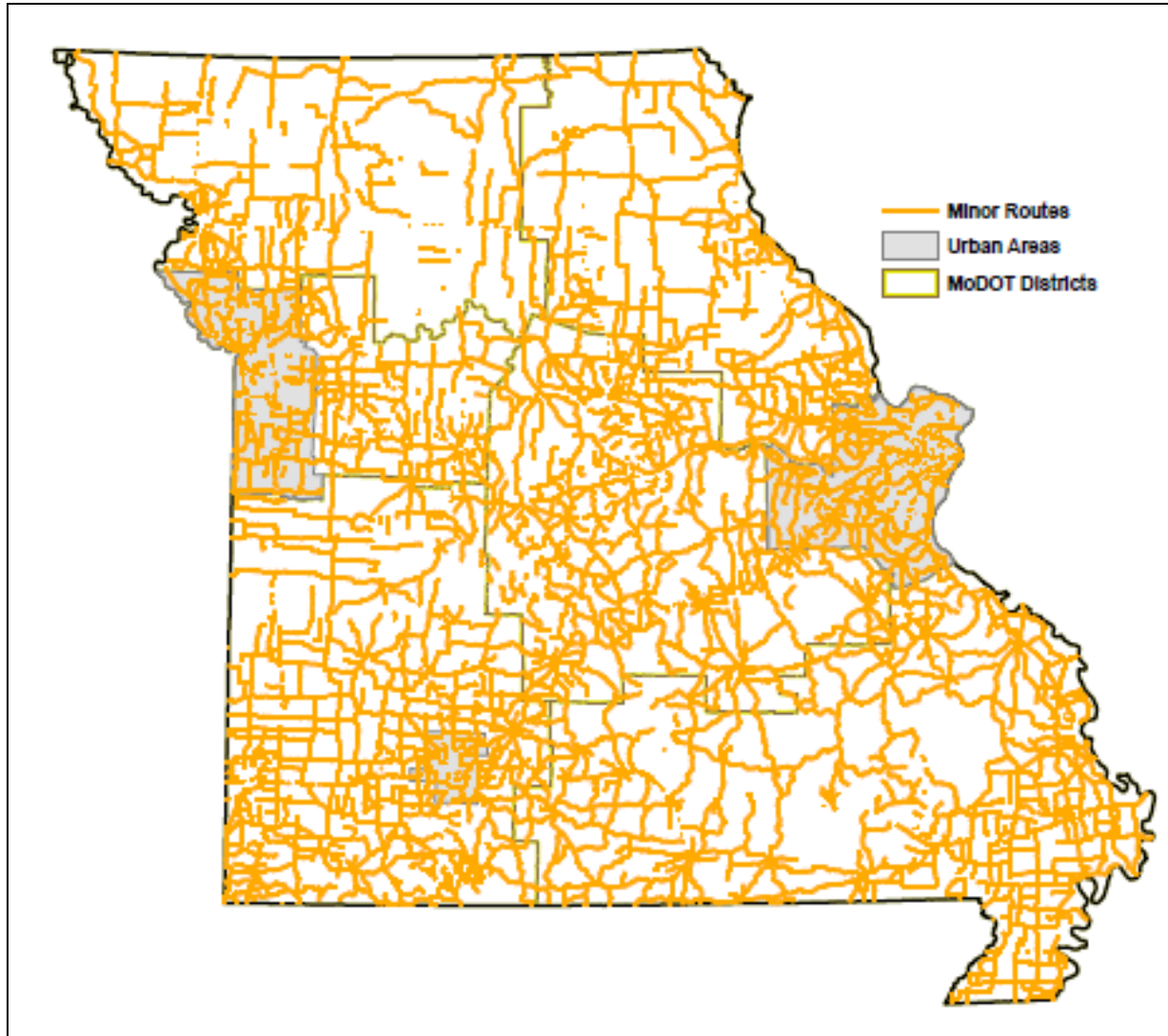
Low Volume Roads



- 10,957 Miles = 33% of System
- Travel Total = 2%
- Pavement Goal = 70%*
 - *Currently = 71%*
 - *Range 53 to 87%*
- Maintained by MoDOT Maintenance

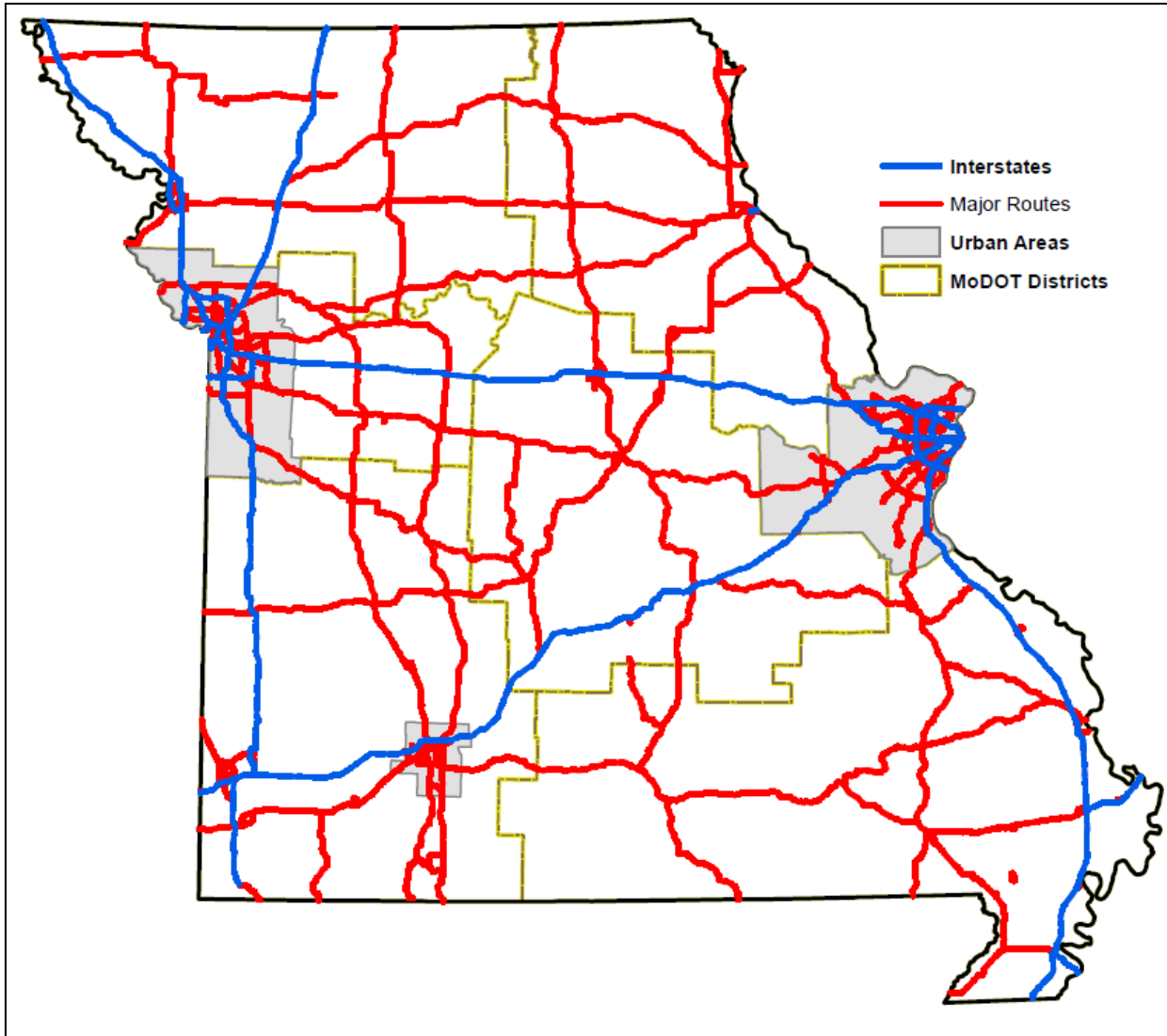
* *Based on current funding level*

Minor Roads



- 17,334 Miles = 51% of System
- Travel Total = 22%
- Pavement Goal = 80%*
 - *Currently = 80%*
 - *Range 68 to 87%*
- **Cost = \$37,700/lane mile**
- Treatment Type = 100% Preventive MT
- ** Based on current funding level*

Major Roads



- 5,542 Miles = 16% of System
- Travel Total = 76%
- Pavement Goal = 90%
 - *Currently = 90%*
 - *Range 86 to 97%*
- **Cost \$120,500/lane mile**
- Treatment Type = 85-95% Preventive MT

Current Condition

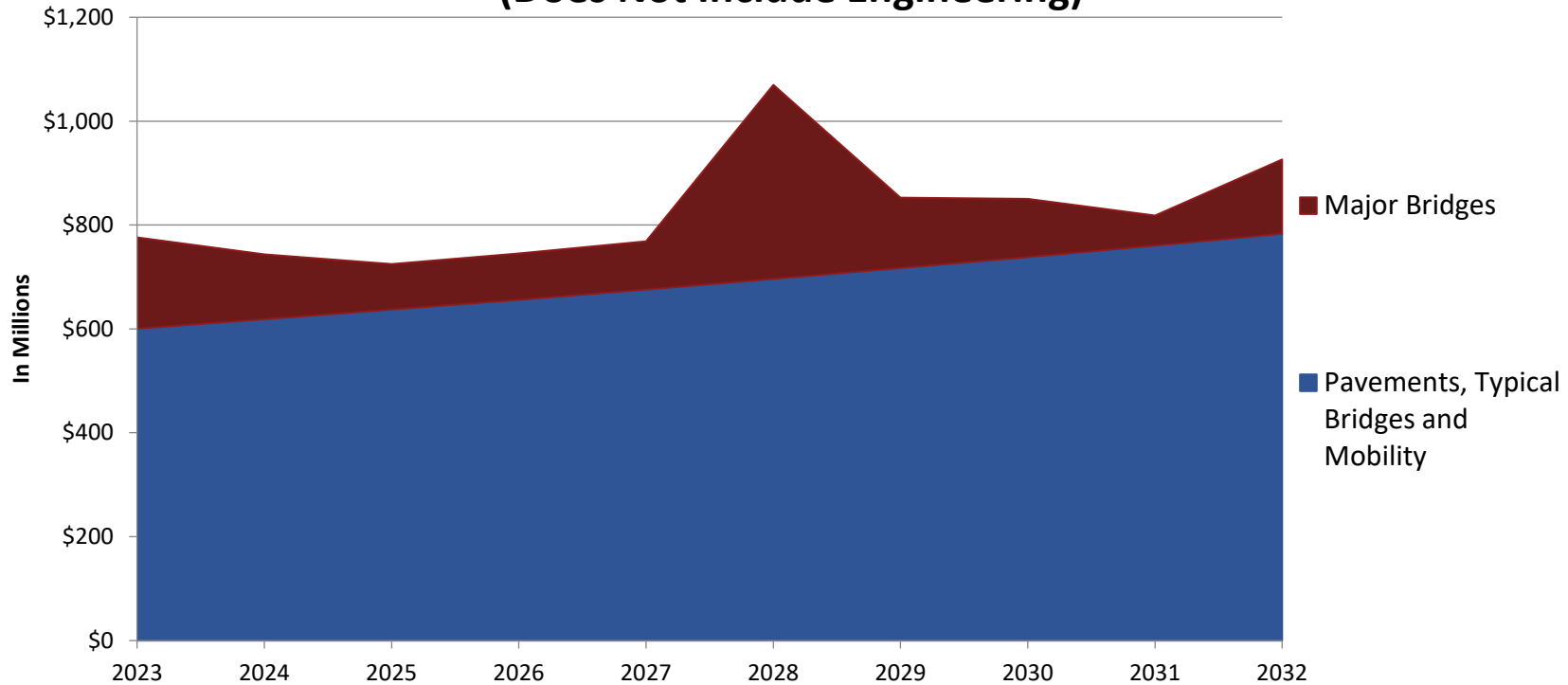
| Lane Miles Quintiled by District VMT 2021 | | | | | | | | | | | | | |
|-------------------------------------------|-----------|-------------------|------|-------|-----|-------------------|-------|-------|-----|---------------------|-------|-------|-----|
| | Quintiles | Major Routes 2021 | | | | Minor Routes 2021 | | | | Low Vol Routes 2021 | | | |
| | | Miles | %Fed | %Good | 90% | Miles | %Fed | %Good | 80% | Miles | %Fed | %Good | 70% |
| NW | 0-20% | 885 | 100% | 80% | ✗ | 1,705 | 93% | 66% | ✗ | 2,536 | 35% | 42% | ✗ |
| | 20-40% | 491 | 100% | 87% | ✗ | 769 | 99% | 84% | ✓ | 1,251 | 65% | 52% | ✗ |
| | 40-60% | 346 | 100% | 88% | ✗ | 487 | 98% | 91% | ✓ | 860 | 76% | 61% | ✗ |
| | 60-80% | 309 | 100% | 97% | ✓ | 282 | 99% | 93% | ✓ | 658 | 85% | 68% | ✗ |
| | 80-100% | 183 | 100% | 90% | ✓ | 161 | 99% | 90% | ✓ | 450 | 95% | 73% | ✓ |
| | Subtotal | 2,215 | 100% | 86.1% | ✗ | 3,405 | 95.7% | 77.3% | ✗ | 5,755 | 58.1% | 52.5% | ✗ |
| NE | 0-20% | 695 | 100% | 94% | ✓ | 2,213 | 92% | 57% | ✗ | 1,674 | 39% | 57% | ✗ |
| | 20-40% | 506 | 100% | 98% | ✓ | 885 | 93% | 77% | ✗ | 875 | 51% | 68% | ✗ |
| | 40-60% | 365 | 100% | 94% | ✓ | 492 | 88% | 84% | ✓ | 583 | 69% | 71% | ✓ |
| | 60-80% | 198 | 100% | 94% | ✓ | 270 | 92% | 83% | ✓ | 446 | 69% | 71% | ✓ |
| | 80-100% | 122 | 100% | 99% | ✓ | 139 | 98% | 82% | ✓ | 337 | 96% | 72% | ✓ |
| | Subtotal | 1,885 | 100% | 95.2% | ✓ | 3,998 | 91.6% | 67.6% | ✗ | 3,915 | 54.4% | 64.3% | ✗ |
| KCU | 0-20% | 954 | 100% | 89% | ✗ | 814 | 77% | 72% | ✗ | 96 | 19% | 59% | ✗ |
| | 20-40% | 519 | 100% | 89% | ✗ | 252 | 95% | 86% | ✓ | 21 | - | 85% | ✓ |
| | 40-60% | 322 | 100% | 84% | ✗ | 167 | 97% | 84% | ✓ | 48 | 77% | 99% | ✓ |
| | 60-80% | 280 | 100% | 81% | ✗ | 127 | 94% | 85% | ✓ | 11 | 36% | 98% | ✓ |
| | 80-100% | 237 | 100% | 73% | ✗ | 112 | 100% | 85% | ✓ | 37 | 37% | 92% | ✓ |
| | Subtotal | 2,313 | 100% | 85.5% | ✗ | 1,472 | 85.2% | 77.8% | ✗ | 213 | 34.1% | 78.4% | ✓ |
| KCR | 0-20% | 369 | 100% | 86% | ✗ | 993 | 78% | 69% | ✗ | 393 | 22% | 80% | ✓ |
| | 20-40% | 233 | 100% | 92% | ✓ | 432 | 94% | 83% | ✓ | 237 | 46% | 86% | ✓ |
| | 40-60% | 149 | 100% | 94% | ✓ | 261 | 99% | 92% | ✓ | 167 | 57% | 95% | ✓ |
| | 60-80% | 83 | 100% | 96% | ✓ | 166 | 99% | 87% | ✓ | 130 | 52% | 95% | ✓ |
| | 80-100% | 129 | 100% | 98% | ✓ | 92 | 99% | 87% | ✓ | 93 | 36% | 90% | ✓ |
| | Subtotal | 962 | 100% | 91.4% | ✓ | 1,943 | 86.8% | 77.7% | ✗ | 1,021 | 38.5% | 86.8% | ✓ |
| CD | 0-20% | 991 | 100% | 88% | ✗ | 3,704 | 79% | 69% | ✗ | 905 | 28% | 63% | ✗ |
| | 20-40% | 539 | 100% | 92% | ✓ | 1,454 | 87% | 85% | ✓ | 493 | 50% | 74% | ✓ |
| | 40-60% | 384 | 100% | 97% | ✓ | 817 | 91% | 87% | ✓ | 382 | 46% | 83% | ✓ |
| | 60-80% | 329 | 100% | 95% | ✓ | 480 | 96% | 92% | ✓ | 310 | 60% | 85% | ✓ |
| | 80-100% | 263 | 100% | 91% | ✓ | 294 | 100% | 86% | ✓ | 238 | 58% | 81% | ✓ |
| | Subtotal | 2,506 | 100% | 91.3% | ✓ | 6,749 | 84.4% | 76.9% | ✗ | 2,329 | 43.1% | 73.7% | ✓ |

Current Condition

| | | | | | | | | | | | | | |
|-----|----------|--------|------|-------|---|--------|-------|-------|---|--------|-------|-------|---|
| SL | 0-20% | 1,449 | 100% | 88% | ✗ | 1,156 | 64% | 71.0% | ✗ | 55 | 3% | 65% | ✗ |
| | 20-40% | 747 | 100% | 81% | ✗ | 407 | 95% | 77.0% | ✗ | 31 | 0% | 90% | ✓ |
| | 40-60% | 576 | 100% | 85% | ✗ | 277 | 97% | 76.0% | ✗ | 25 | 2% | 84% | ✓ |
| | 60-80% | 458 | 100% | 82% | ✗ | 193 | 99% | 78.0% | ✗ | 12 | 22% | 58% | ✗ |
| | 80-100% | 392 | 100% | 89% | ✗ | 148 | 99% | 74.0% | ✗ | 11 | 0% | 91% | ✓ |
| | Subtotal | 3,623 | 100% | 85.5% | ✗ | 2,181 | 79% | 73.8% | ✗ | 134 | 3% | 76.1% | ✓ |
| SWU | 0-20% | 228 | 100% | 97% | ✓ | 220 | 71% | 85% | ✓ | 14 | 10% | 67% | ✗ |
| | 20-40% | 161 | 100% | 97% | ✓ | 70 | 94% | 95% | ✓ | 2 | 0% | 38% | ✗ |
| | 40-60% | 103 | 100% | 99% | ✓ | 47 | 100% | 96% | ✓ | - | 0% | - | |
| | 60-80% | 106 | 100% | 97% | ✓ | 50 | 100% | 95% | ✓ | - | 0% | - | |
| | 80-100% | 71 | 100% | 92% | ✓ | 45 | 100% | 97% | ✓ | 5 | 6% | 78% | ✓ |
| | Subtotal | 669 | 100% | 96.7% | ✓ | 432 | 84% | 90.6% | ✓ | 21 | 8% | 66.8% | ✗ |
| SWR | 0-20% | 1,010 | 100% | 95% | ✓ | 4,141 | 81% | 77% | ✗ | 1,161 | 31% | 83% | ✓ |
| | 20-40% | 732 | 100% | 97% | ✓ | 1,649 | 96% | 94% | ✓ | 664 | 54% | 86% | ✓ |
| | 40-60% | 569 | 100% | 98% | ✓ | 911 | 99% | 97% | ✓ | 517 | 56% | 82% | ✓ |
| | 60-80% | 352 | 100% | 98% | ✓ | 610 | 97% | 96% | ✓ | 391 | 51% | 91% | ✓ |
| | 80-100% | 276 | 100% | 98% | ✓ | 328 | 99% | 94.0% | ✓ | 309 | 80% | 94% | ✓ |
| | Subtotal | 2,940 | 100% | 97.0% | ✓ | 7,638 | 88% | 85.1% | ✓ | 3,042 | 48% | 85.5% | ✓ |
| SE | 0-20% | 1,171 | 100% | 85% | ✗ | 4,581 | 85% | 81% | ✓ | 1,903 | 31% | 80% | ✓ |
| | 20-40% | 714 | 100% | 91% | ✓ | 1,883 | 96% | 94% | ✓ | 936 | 48% | 86% | ✓ |
| | 40-60% | 514 | 100% | 94% | ✓ | 1,125 | 99% | 95% | ✓ | 689 | 60% | 88% | ✓ |
| | 60-80% | 388 | 100% | 96% | ✓ | 632 | 96% | 97% | ✓ | 571 | 69% | 94% | ✓ |
| | 80-100% | 296 | 100% | 96% | ✓ | 437 | 99% | 91% | ✓ | 361 | 90% | 91% | ✓ |
| | Subtotal | 3,084 | 100% | 90.4% | ✓ | 8,658 | 91% | 87.3% | ✓ | 4,459 | 48% | 85.3% | ✓ |
| All | 0-20% | 7,751 | 100% | 88.3% | ✗ | 19,527 | 82.2% | 72.3% | ✗ | 8,737 | 32.6% | 62.9% | ✗ |
| | 20-40% | 4,643 | 100% | 90.8% | ✓ | 7,801 | 94.1% | 87.6% | ✓ | 4,511 | 53.6% | 71.7% | ✓ |
| | 40-60% | 3,329 | 100% | 92.1% | ✓ | 4,583 | 95.8% | 90.9% | ✓ | 3,270 | 63.2% | 76.8% | ✓ |
| | 60-80% | 2,504 | 100% | 92.1% | ✓ | 2,810 | 96.7% | 91.9% | ✓ | 2,529 | 67.9% | 81.6% | ✓ |
| | 80-100% | 1,969 | 100% | 91.3% | ✓ | 1,756 | 99.2% | 88.5% | ✓ | 1,842 | 81.8% | 82.2% | ✓ |
| | Total | 20,196 | 100% | 90.3% | ✓ | 36,476 | 88.4% | 80.2% | ✓ | 20,889 | 50.5% | 71.0% | ✓ |

Bridges and Condition

Asset Management Needs (Does Not Include Engineering)

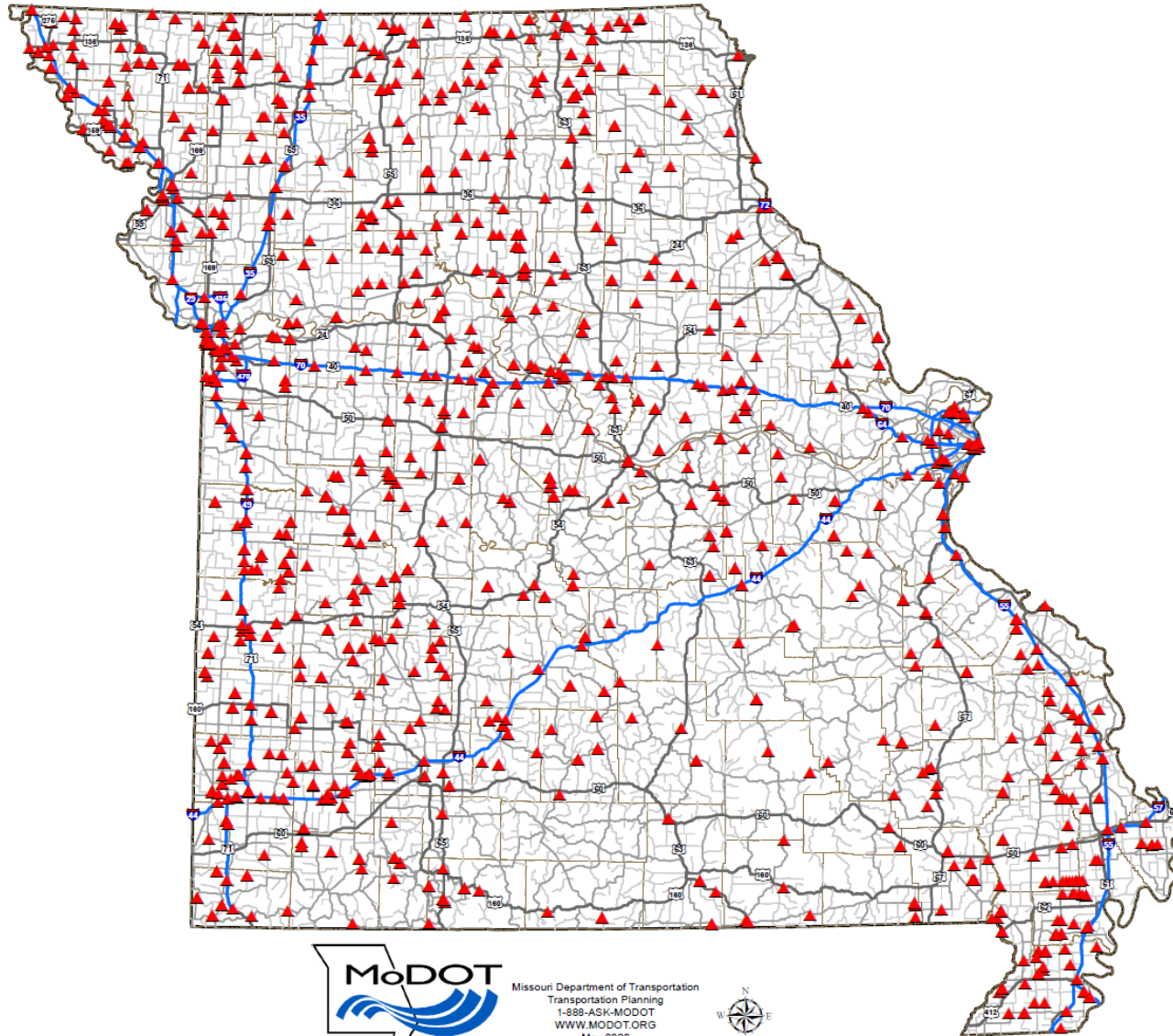


FY 2023

- Maintain System Conditions = \$601m
- Major Bridges = \$176m
- **Total = \$777m**



823 Poor Bridges



- 23-27 STIP Includes
 - **1443 Bridges**
 - **\$1.7 billion**



MHTC STIP & Governor's Rural Routes Funding

- **Minor Routes**
 - Pavements –
 - 15,630 lane miles
 - \$1.209B
 - Bridges –
 - 546 Bridges
 - \$474M
- **Low Volume Minor Routes**
 - Pavements –
 - 3,280 lane miles
 - \$169M
 - Bridges –
 - 293 Bridges
 - \$132M

Grand Total - \$1.98B



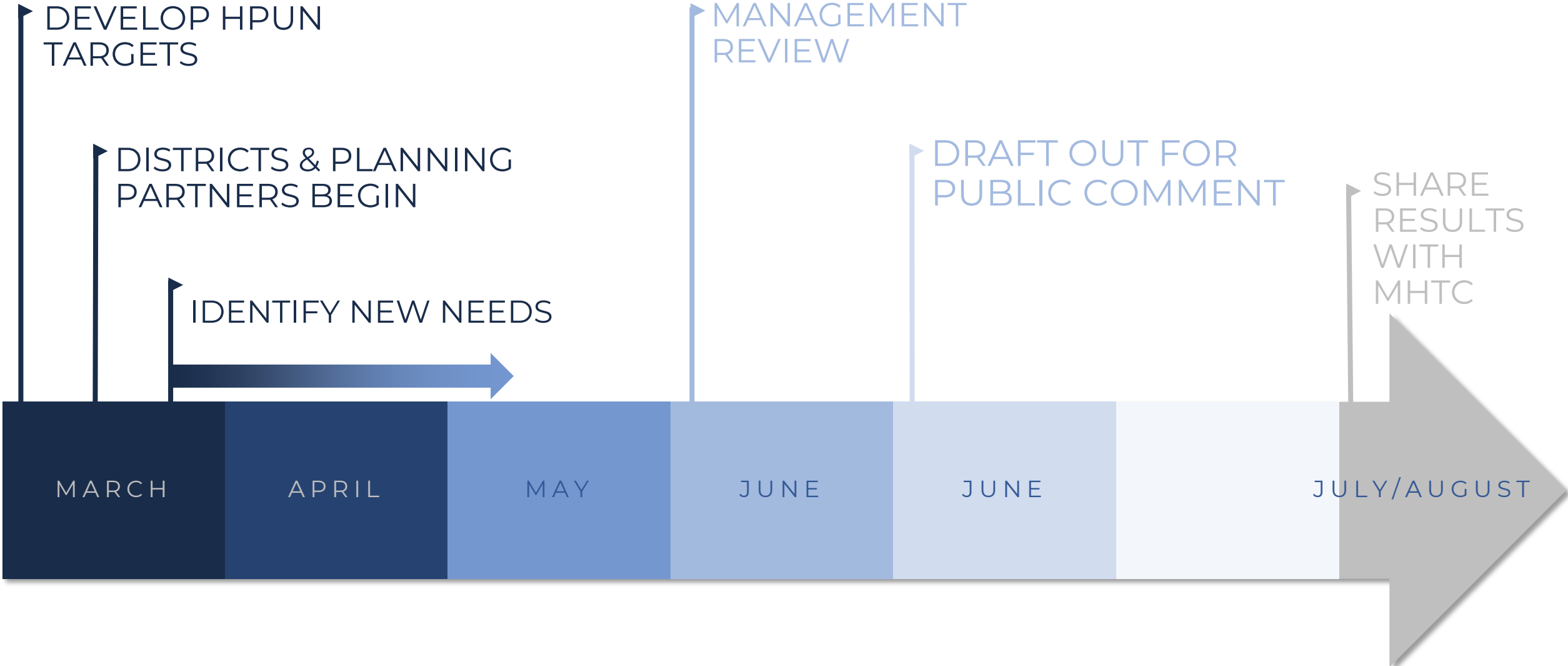
HIGH-PRIORITY UNFUNDED NEEDS



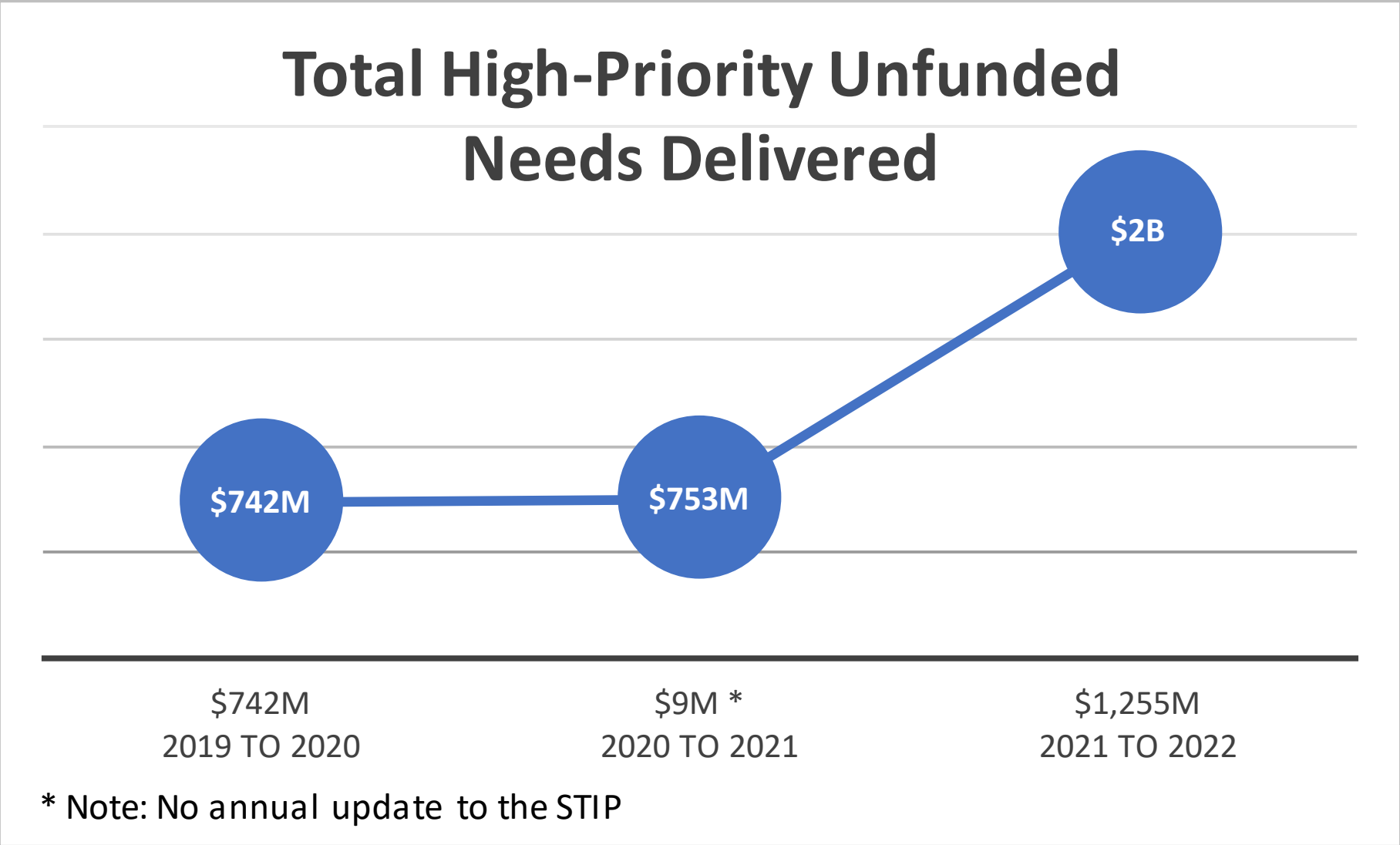
UNFUNDED NEEDS

Jan. 2023

TENTATIVE SCHEDULE



DELIVERING RESULTS!



BIKE PED POLICY

- Planning process
- Safety
- Ped and non motorized improvements
- \$264M on 200 STIP projects
- Suballocated programs





Thank you!