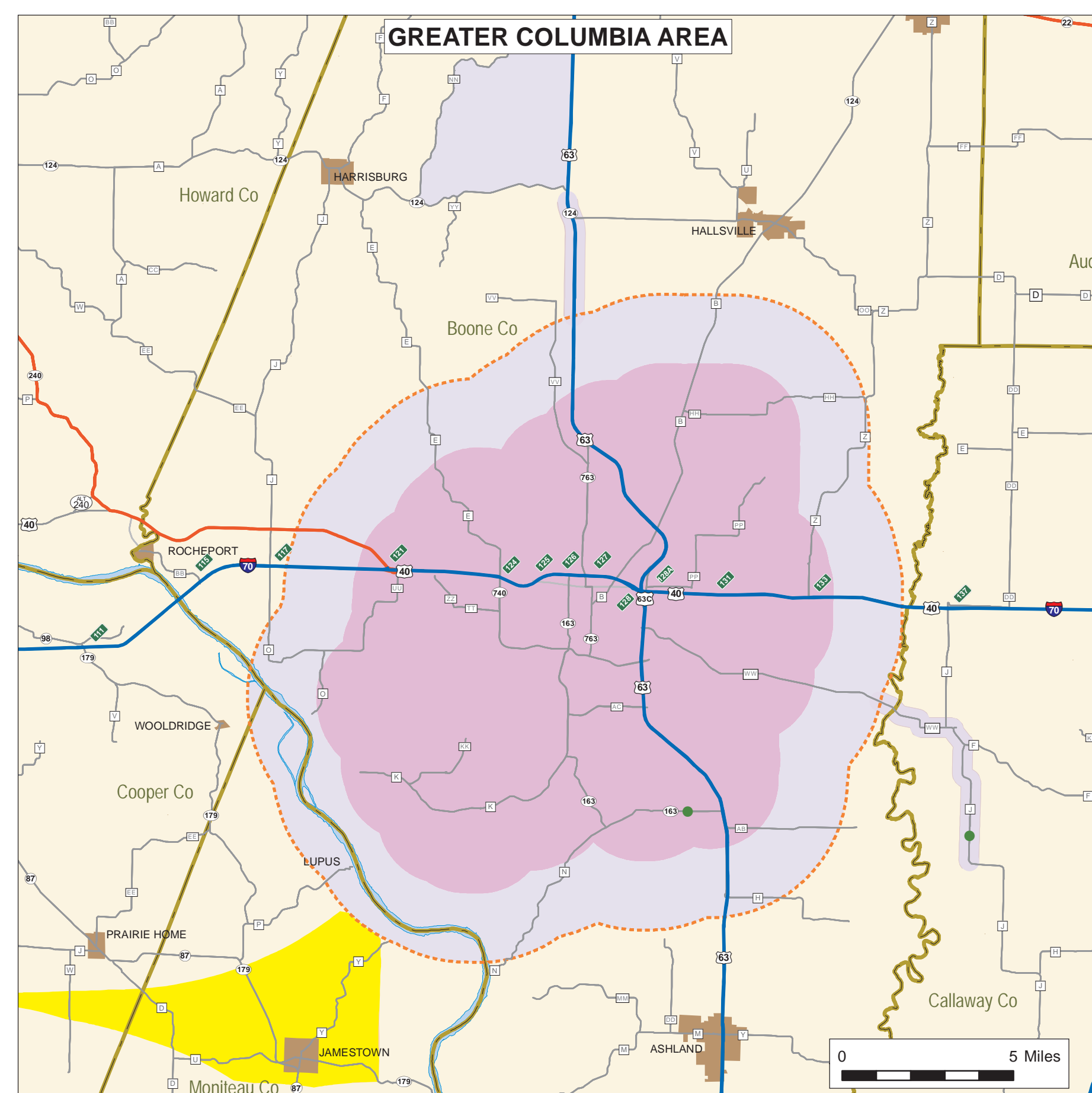
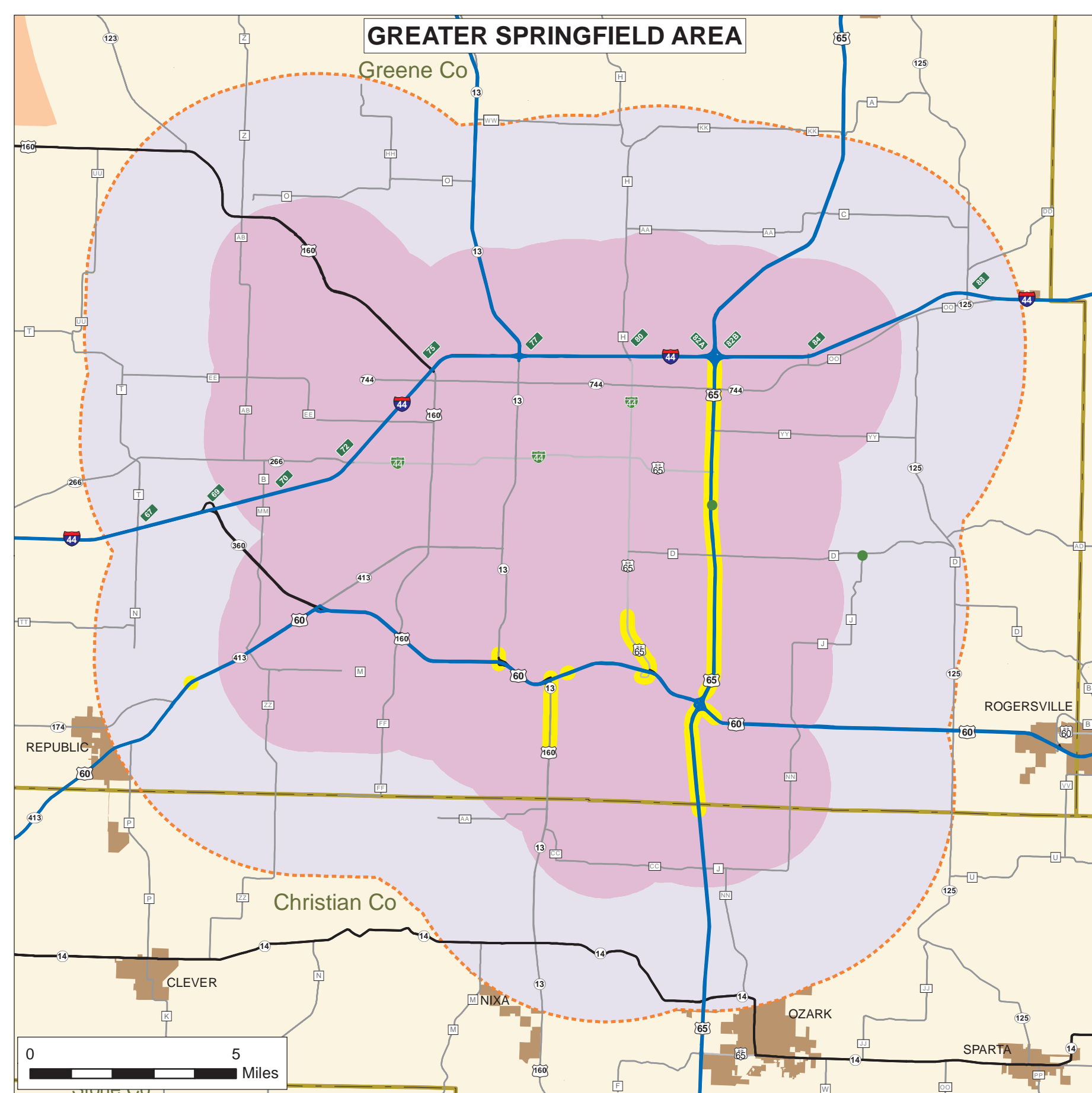
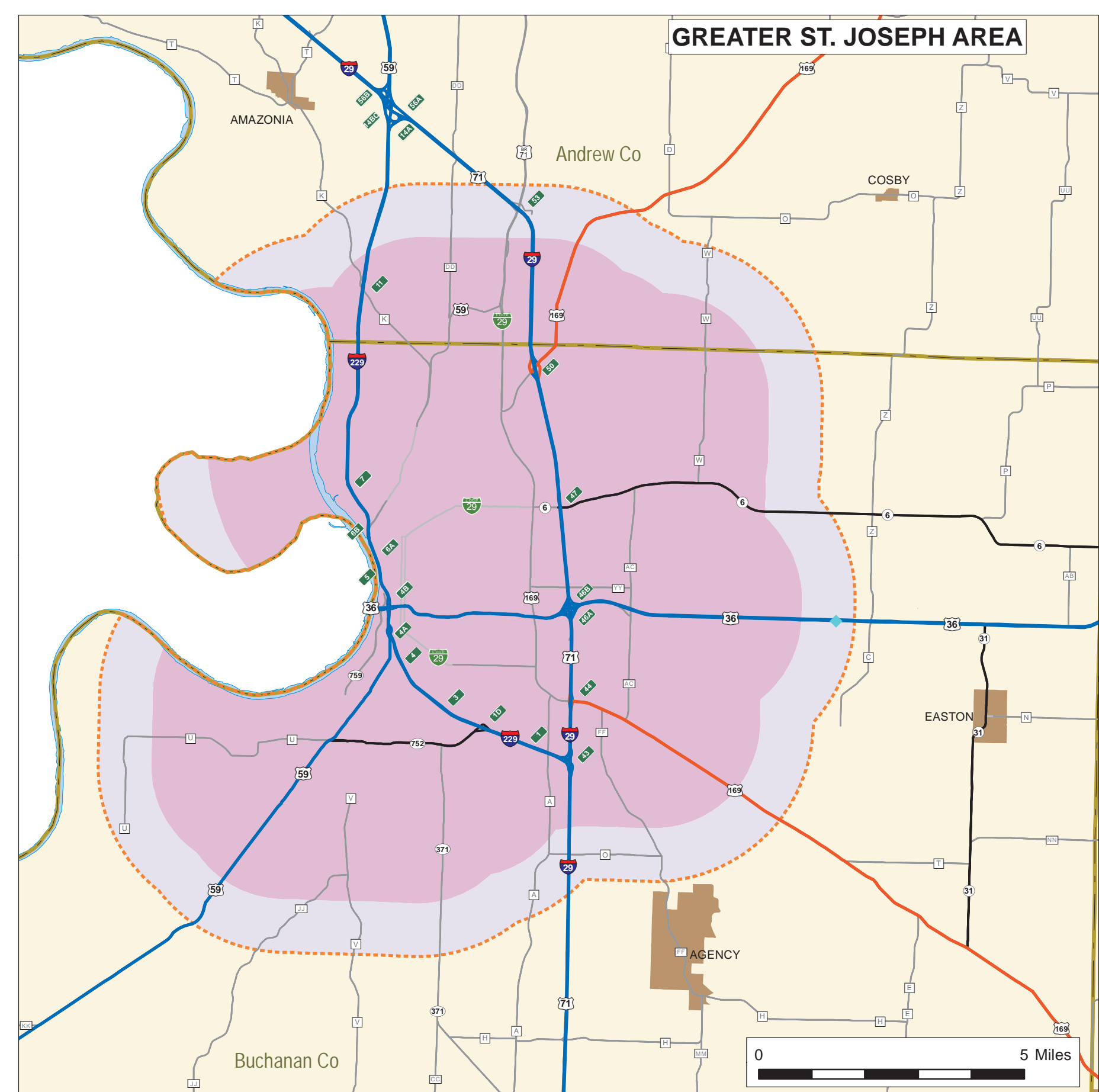
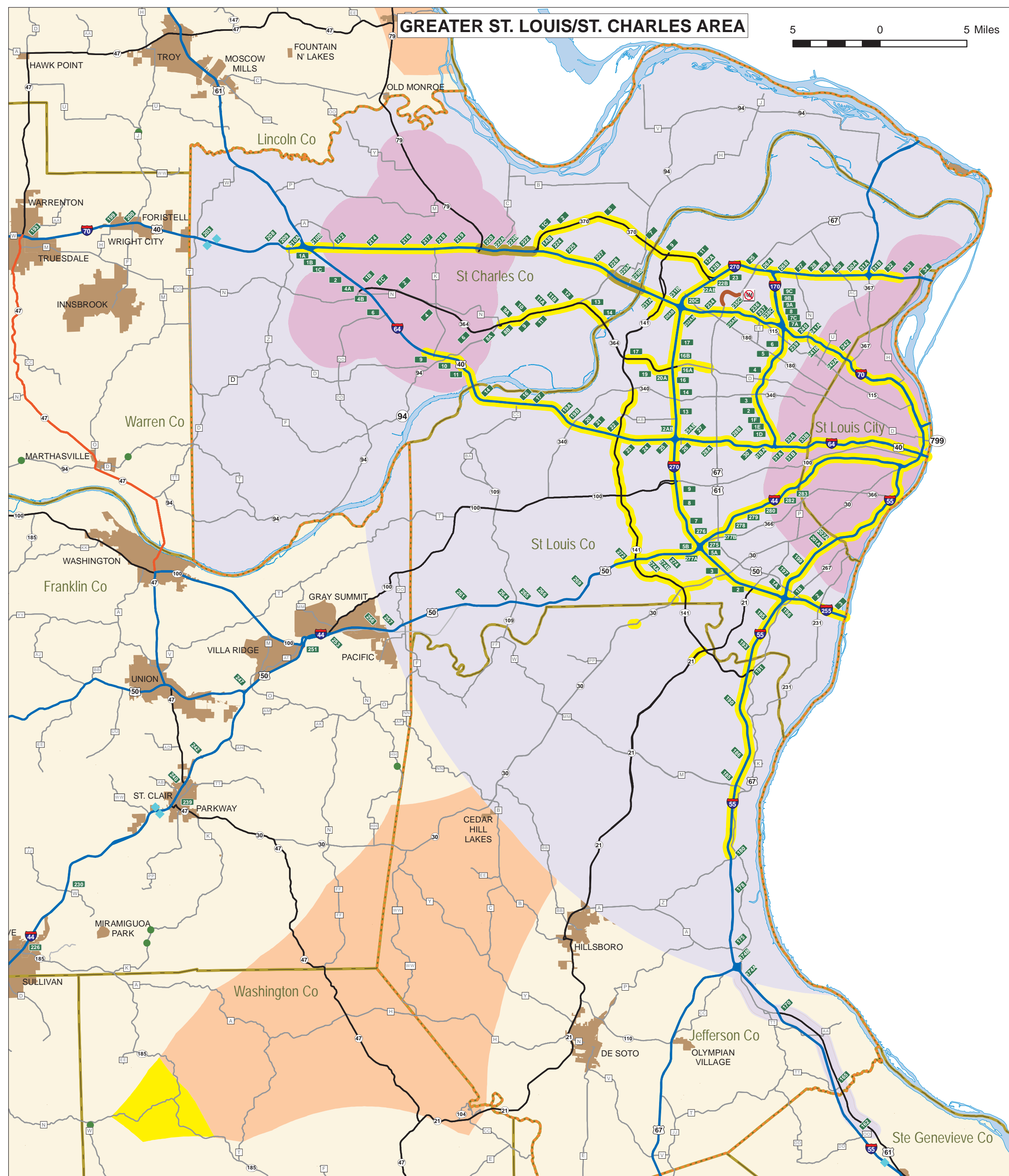
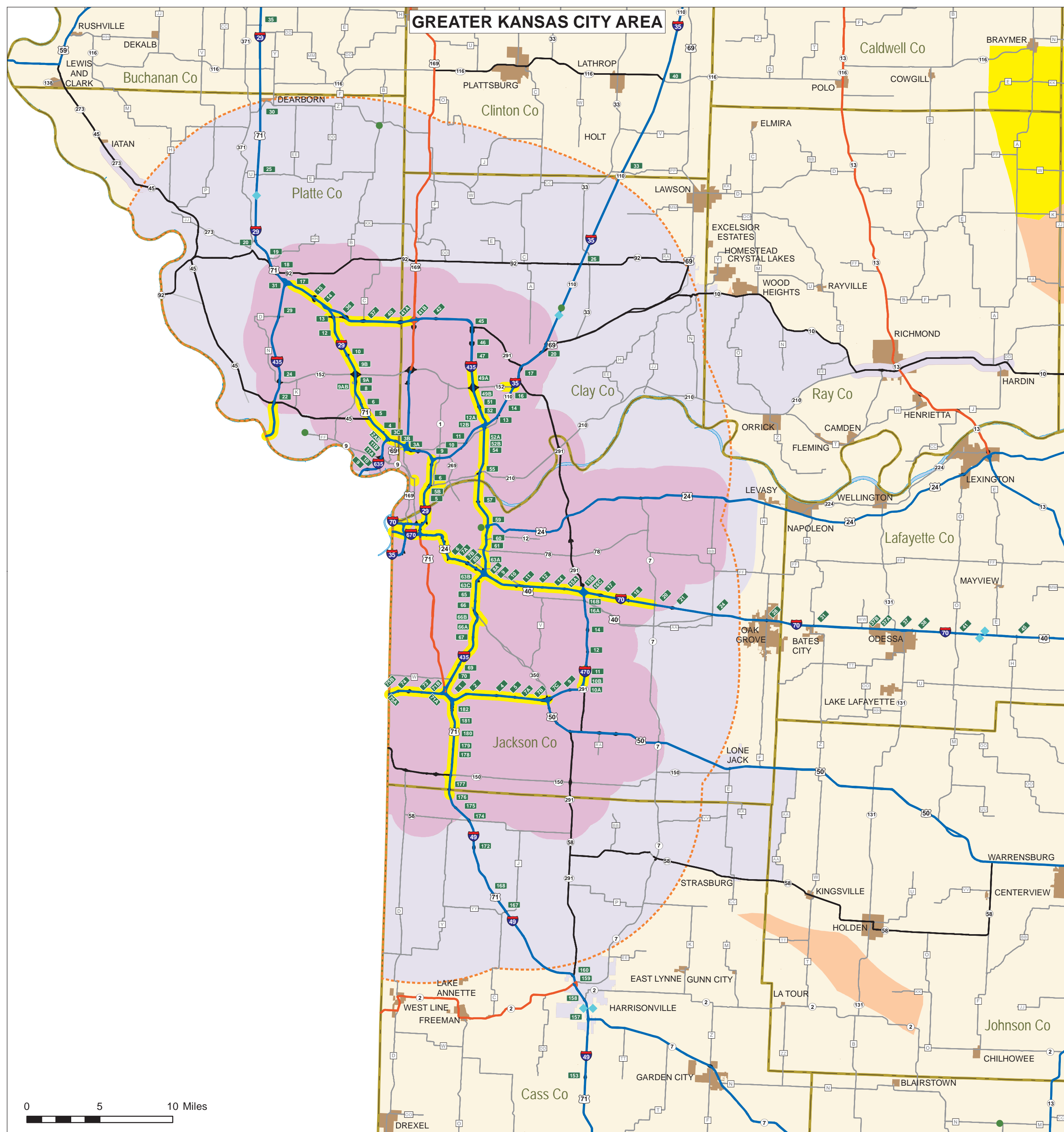
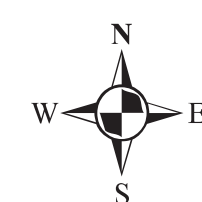


MISSOURI VEHICLE ROUTE MAP 2021-2022 (Insets)



DESIGNATED HIGHWAY NETWORK
(as established by Surface Transportation Assistance Act (STAA), 1982)

DESIGNATED HIGHWAY NETWORK
(subsequently added by state authority)

BOTH NETWORKS PLUS 10 MILES BEYOND, ALLOW LEGAL OPERATION OF VEHICLES WITH THE FOLLOWING LIMITS¹:

14'0" Overall Height
8'6" Overall Width
53'0" Length of semitrailer in a truck-tractor/semitrailer combination
65'0" Overall Length for other combinations (truck/trailer, towing, etc.)
45'0" Overall Length for single unit
28'0" Overall Length of each semitrailer or trailer in a truck-tractor semitrailer and trailer combination
80,000 lbs. Maximum gross weight²

Commercial zone limits below apply when traveling wholly within the applicable commercial zone.

¹Under Section 304.180, the total gross weight of any vehicle or combination of vehicles hauling milk from a farm to a processing facility shall not exceed 85,500 pounds while operating on highways other than interstate and defense highways.

STATE BRIDGE STRUCTURES WITH APPROVED POSTING OF LESS THAN 80,000 LBS. GROSS WEIGHT

WEIGH STATION

PRIMARY HIGHWAY SYSTEM

AREA MORE THAN 10 MILES BEYOND THE DESIGNATED HIGHWAY NETWORK

AREA MORE THAN 10 MILES BEYOND INTERSTATES AND THE PRIMARY HIGHWAY SYSTEM

LEGAL OPERATION OF VEHICLES WITH THE FOLLOWING LIMITS:

13'0" Overall Height
8'6" Overall Width
60'0" Overall Length for truck-tractor/semitrailer combination—applies in pink areas only
55'0" Overall Length for Other combinations (truck/trailer, towing, etc.) applies in yellow areas only
45'0" Overall Length for single unit
80,000 lbs. Maximum gross weight²

COMMERCIAL ZONE LIMITS FOR VEHICLE HEIGHT AND WEIGHT REGULATIONS UNDER SECTION 304.190, RSMo (Supp. 2004), ON ALL ROUTES OTHER THAN INTERSTATE HIGHWAYS

COMMERCIAL ZONE LIMITS FOR VEHICLE HEIGHT AND WEIGHT REGULATIONS UNDER SECTION 304.190, RSMo (Supp. 2004), ON ALL ROUTES INCLUDING INTERSTATE HIGHWAYS

LEGAL OPERATION OF VEHICLES WITH THE FOLLOWING LIMITS:

15'0" Overall Height
8'6" Overall Width
53'0" Length of semitrailer in a truck-tractor/semitrailer combination
65'0" Overall Length for other combinations (truck/trailer, towing, etc.)
45'0" Overall Length for single unit (length applies statewide)
28'0" Overall Length of each semitrailer or trailer in a truck-tractor semitrailer and trailer combination
80,000 lbs. Maximum weight per axle

UNDER SECTION 304.180, THE TOTAL GROSS WEIGHT OF ANY VEHICLE OR COMBINATION OF VEHICLES HAULING LIVESTOCK, GRAIN, AND GRAIN CO-PRODUCTS, SHALL NOT EXCEED 85,500 POUNDS WHILE OPERATING ON MISSOURI HIGHWAYS OTHER THAN INTERSTATE.

COMMERCIAL ZONE AREAS EXEMPT FROM AUTHORITY REGISTRATION, SOME EXCEPTIONS APPLY. SEE SECTIONS 390.020(4), 390.030.1(8), AND 390.030.1(10), RSMo(Supp. 2004), CONTACT 866-831-6277, OR VISIT WWW.MDOT.ORG/MCS

NOTE:

- * The weight is further limited by bridges signed for a lesser maximum gross weight.
- * Height is further restricted by a signed lesser vertical clearance.
- * BRIDGE WEIGHT LIMITS ARE SUBJECT TO CHANGE AND ADDITIONAL BRIDGES MAY BE POSTED AT ANY TIME.

The depictions in this map regarding dimensions of commercial zones, areas more than 10 miles beyond the designated highway network, areas more than 10 miles beyond interstates and the primary highway system, and bridge weight limits, are approximations. For official dimensions and bridge weight limits, please contact the Motor Carrier Services Division, Missouri Department of Transportation at 1-866-831-6277 or 1-573-751-7100.