



Design-Build Industry Meeting

May 23, 2023

Project Director: Michael Marriott, P.E.
Deputy Director: Joyce Reynolds, P.E.
Bridge Liaison: Chris Shanks, P.E.
Owner's Engineer: Wilson & Company, Inc.,
Engineers & Architects

(816) 262-1797
NWBridgeBundle@modot.mo.gov

Outline

Project Goals

Budget

Schedule

Project Overview

Primary Bridges

Alternate Bridges

Risk Allocation

DBE & Workforce

RFQ/SOQ



Project Goals

1. Safely deliver the project within the program budget of \$30 million on or before December 31, 2026.
2. Use innovation and practical design to maximize the number of locations to be addressed.
3. Provide quality, low maintenance structures and roadway approaches.
4. Minimize the traveling public's inconvenience through diligent construction efforts, flexibility in scheduling, and proactive communication.



Budget

Total Program: \$29.917 million

Engineering & RW: \$5.397 million

Stipends: \$520,000 (\$130,000 per team)

Design-Build Contract: \$23.7 million

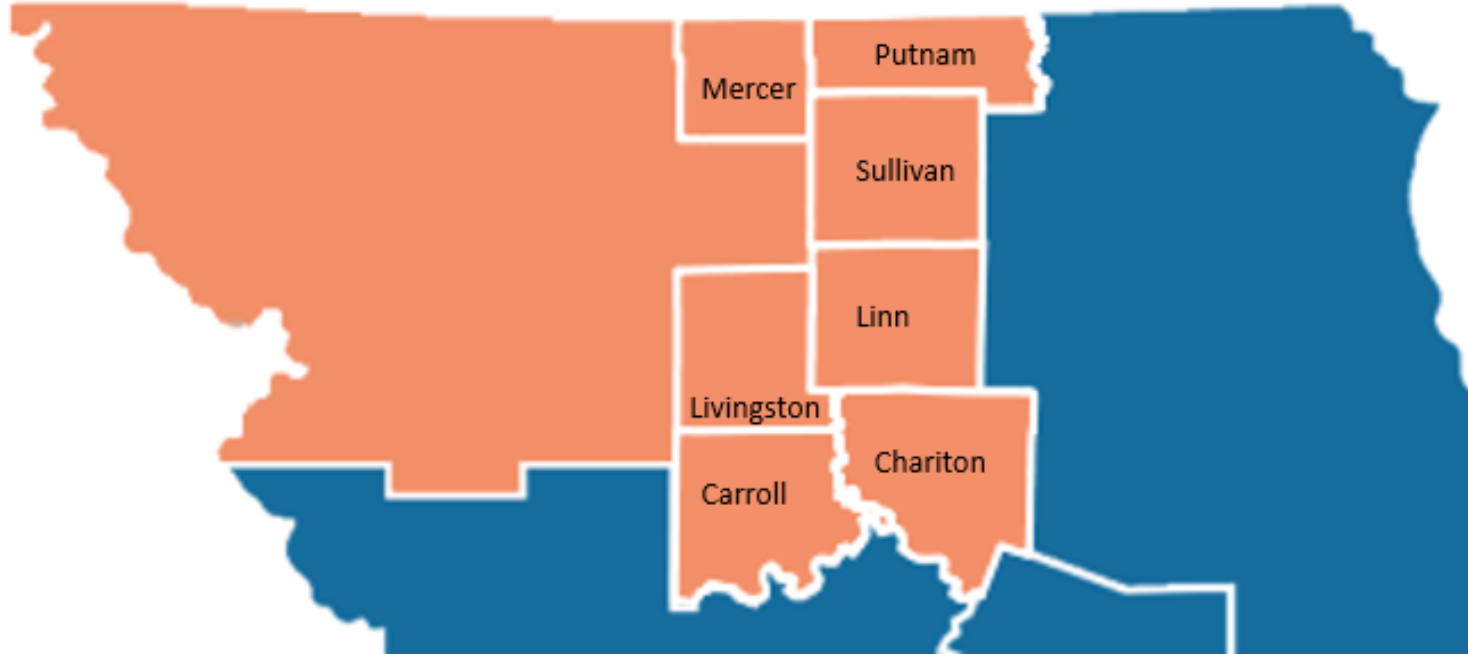


Schedule

RFQ Issued	May 23
SOQ Due	June 19
RFP Issued	July 17
Proposal Due	October
Contract Award	December 2023
Contract Completion	December 2026



Project Overview

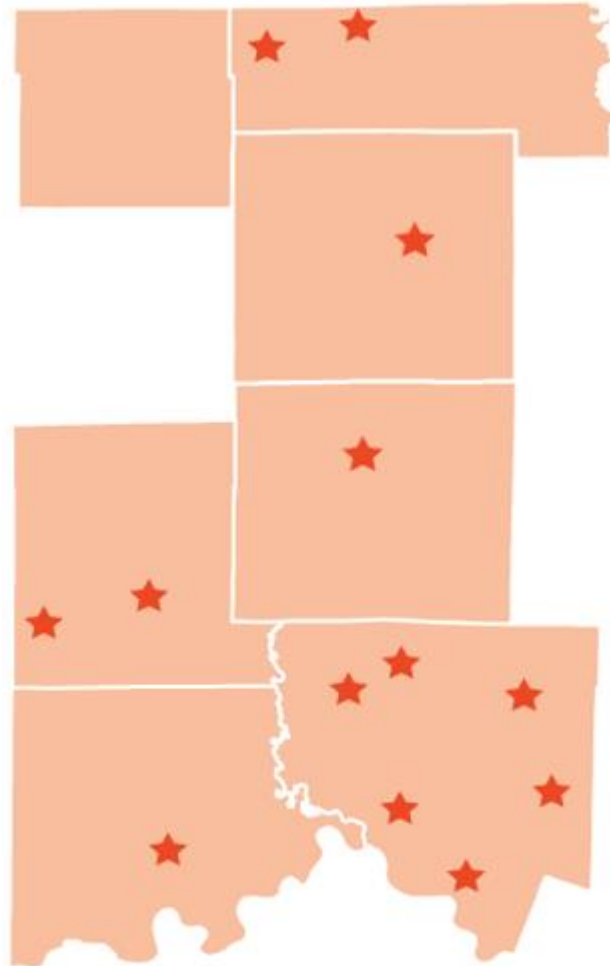


- 34 poor condition bridges in 7 counties
- 31 bridges less than 150 feet long
- 31 bridges have ADT less than 500

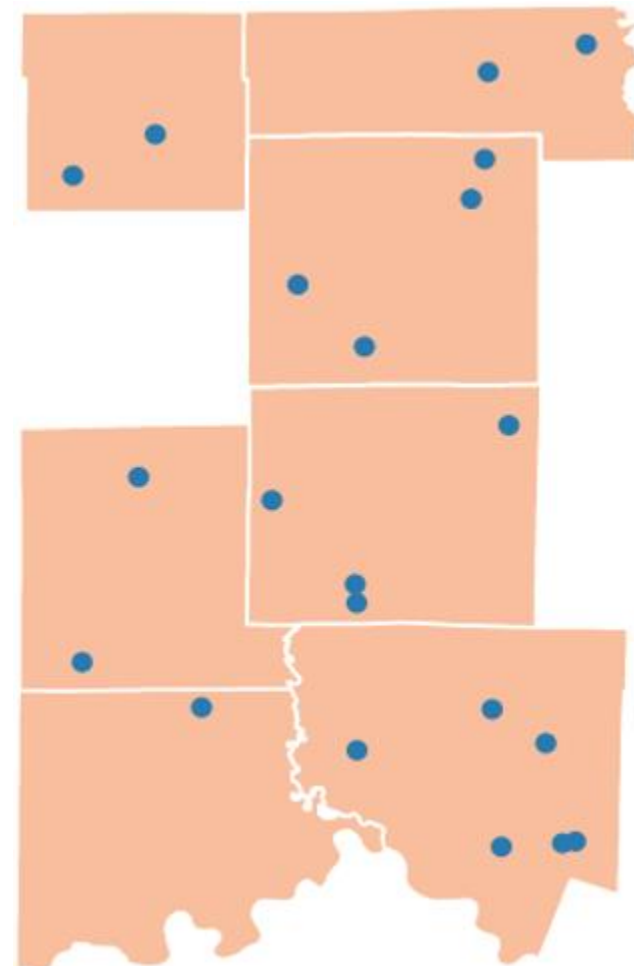


Project Overview

Primary Bridges (13)



Alternate Bridges (21)



Primary Bridges



9 possible superstructure replacements

- Precast Channel Beams (pictured)
- Lengths of 83' – 123'
- All bridges are three span

4 required replacements

- Lengths of 121' – 173'
- 1 truss



Alternate Bridges

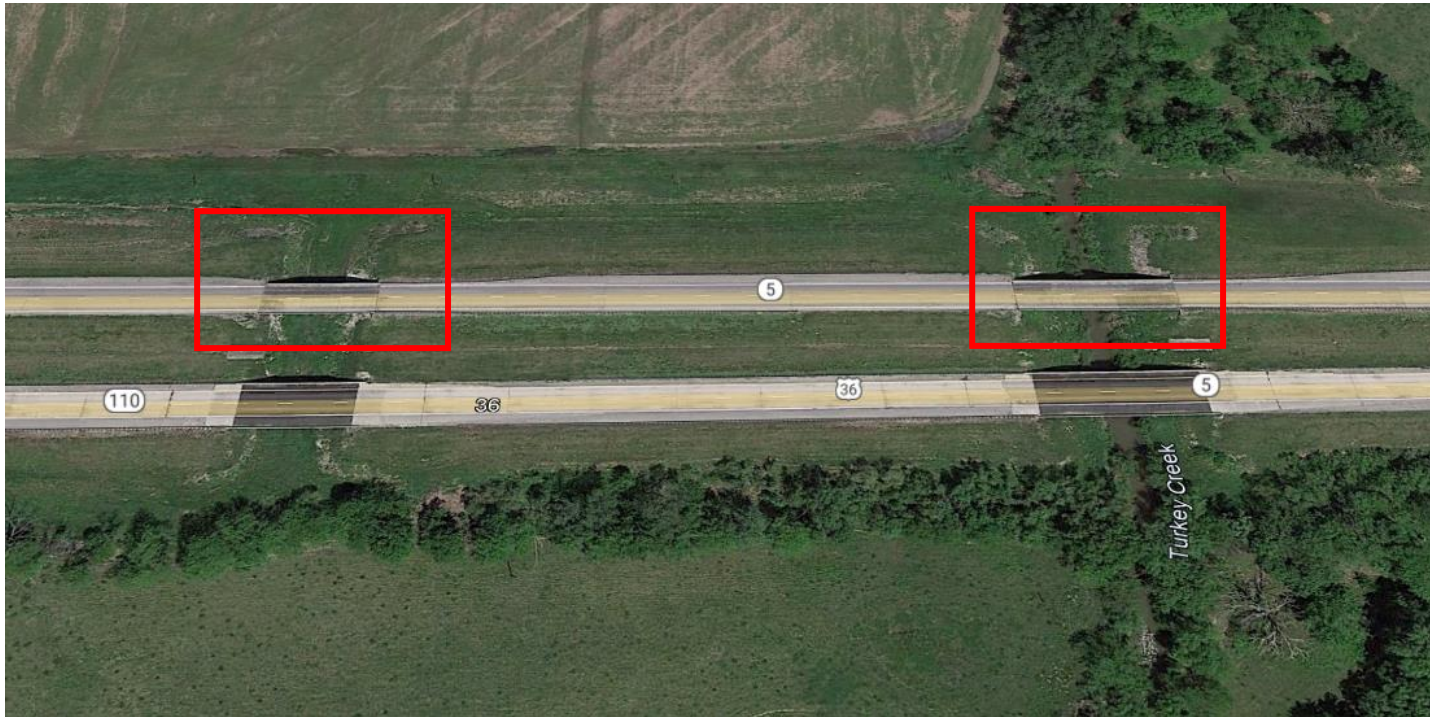


19 required replacements

- Lengths of 43' – 265'
- ADT of 35 – 913
- 3 trusses



Alternate Bridges (cont.)



2 possible redecks

- U.S. Route 36 WB
- Lengths of 89' & 125'
- ADT of 5,296



Risk Allocation

- **Environmental**
 - All field work completed.
 - Working to obtain clearances and permits.
- **Right-of-Way**
 - MoDOT is purchasing a parcel in the NW quadrant of G0630. We anticipate this to be completed before contract award.
- **Utilities**
 - All known utilities have been located and are shown in the survey information.
 - Utility contact list will be provided.



Risk Allocation (cont.)

- **Hydrology & Hydraulics**
 - Existing HEC-RAS models complete for all bridges.
 - Hydraulic design criteria provided for each location.
- **Design Exceptions**
 - Preapproved design exceptions
 - Backwater
 - Freeboard
 - Roadway Alignment
 - Stopping Sight Distance
 - Guardrail
 - Detours



DBE & Workforce

DBE Goals

6% Construction Activities

9% Professional Services

Workforce Goals

4.0% minorities per trade

6.9% females per trade

1 OJT for construction labor hours



RFQ/SOQ

Deadline for submitting RFQ questions

June 6, 2023
(2:00 p.m. CDT)

Final responses to questions posted &
Final RFQ Addendum issued

June 12, 2023

SOQ due

June 19, 2023
(11:00 a.m. CDT)



Conclusion

Questions?

