

I-55 Project Goals and Design-Build Schedule

1. Deliver the project within the program budget.
2. Maximize reliability and safety on I-55 and US-67.
3. Provide a durable and maintainable transportation system compatible with regional development.
4. Construct the project safely and minimize impacts to customers.
5. Complete the project on schedule utilizing a diverse workforce.

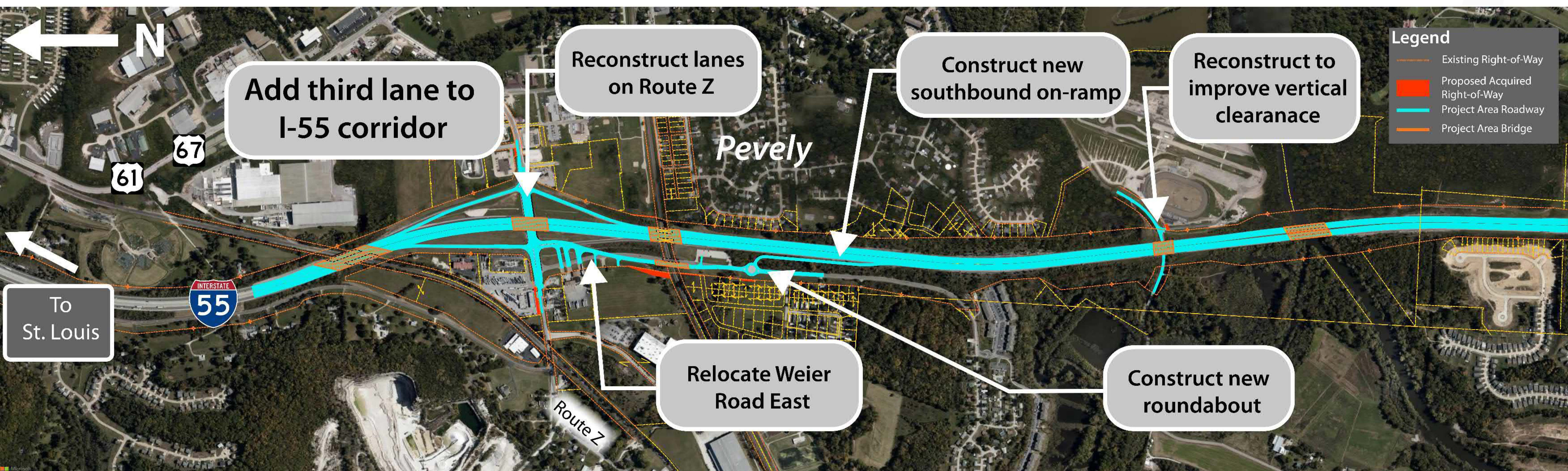
Project Budget: \$236 Million

Milestone	Tentative Date
Industry Meeting and Release RFQ	December 2022
Shortlist Teams and Release RFP	January 2023
Award Project	May 2023
Project Completion	December 2026

Preliminary Design

I-55 CORRIDOR IMPROVEMENTS

Pevely Interchange Area



Pevely Interchange Preliminary Design

Construction of an additional lane in each direction on I-55 starting at Route Z

- Reduces congestion experienced during peak hours
- Increases reliability of I-55 during peak hours and during incidents
- Supports proposed and future developments in the region

Interchange Ramps

- Improves safety by increasing ramp lengths with more distance for acceleration and deceleration

Pevely Interchange Preliminary Design (continued)

Relocation of Weier Road and new southbound on-ramp

- Provides connection to Route Z at a signalized intersection allowing better access for heavy truck traffic
- Supports proposed and future developments in the area
- Provides safer and easier access to southbound I-55

New bridge over Route Z

- Allows for better lane geometry on Route Z with no barriers between lanes
- Increases capacity of Route Z
- Allows for sidewalk along Route Z

New bridges over Burlington Northern Railroad, Union Pacific Railroad, Herky Korine Road and Joachim Creek

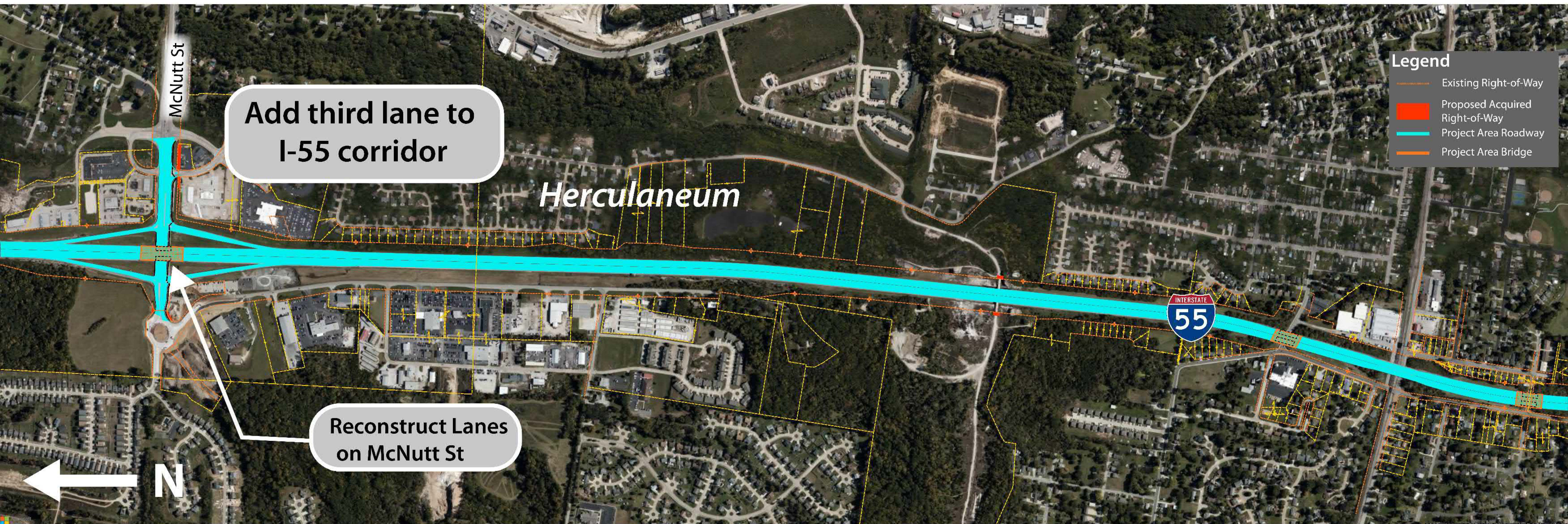
- Improves durability with new bridges



Preliminary Design

I-55 CORRIDOR
IMPROVEMENTS

Herculaneum Interchange Area



Add third lane to I-55 corridor

Reconstruct Lanes on McNutt St

Legend

- Existing Right-of-Way
- Proposed Acquired Right-of-Way
- Project Area Roadway
- Project Area Bridge

Herculaneum Interchange Preliminary Design
Construction of an additional lane in each direction on I-55

- Reduces congestion experienced during peak hours
- Increases reliability of I-55 during peak hours and during incidents
- Supports proposed and future developments in the region

Herculaneum Interchange Preliminary Design (continued)
New bridge over McNutt Street and McNutt Street reconstruction

- Allows for better lane geometry on McNutt Street with no barriers between lanes
- Allows for multi-use trail along McNutt Street
- Increases capacity of McNutt Street
- Provides improved connection to McNutt Street roundabout that accommodates full build-out of roundabout
- Supports proposed and future developments in the area
- Allows easier movement of heavy truck traffic

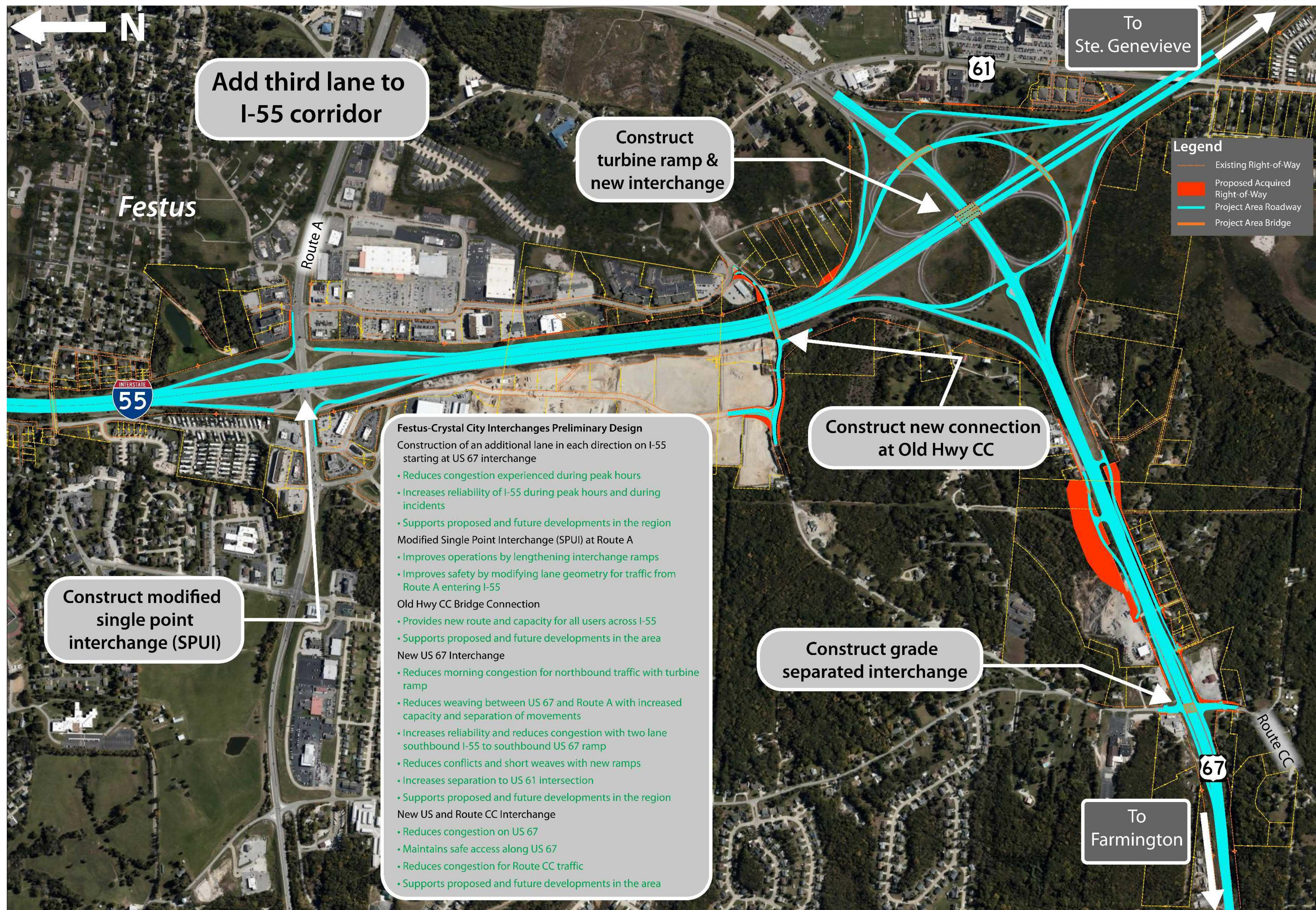


[MoDOT.org/I-55-Corridor-Improvements](https://www.moDOT.org/I-55-Corridor-Improvements)

Preliminary Design

I-55 CORRIDOR IMPROVEMENTS

Festus and 67 and CC Interchanges



[MoDOT.org/I-55-Corridor-Improvements](https://www.moDOT.org/I-55-Corridor-Improvements)