

Safety Improvements Project Overview

February 2024



SAFETY
IMPROVEMENTS PROJECT
A LIFESAVING PARTNERSHIP



SAINT LOUIS COUNTY
Missouri



Project Goals

1. Reduce fatal and serious injury crashes within the budget of **\$52 million**.
2. Maximize safety improvements for pedestrians and roadway users distributed equitably across the project area.
3. Provide improvements with reasonable maintenance and service life.
4. Construct improvements with an emphasis on safety for workers and the traveling public.
5. Deliver the project by **June 30, 2026** using a diverse workforce.

Team Members

Project Director (Procurement & Design) – Stacey Smith *

Project Director (Construction) – Nick Gibbons *

Team Advisor – Tim Hellebusch

Team Members – Glenn Konersmann, Daniel Steinmeyer, Chris Becker, Loriell Campbell

Team Support – Eddie Watkins, Dave Simmons, Katy Harlan, Rachel Sudduth

St. Louis County – Betty Tesfu, Ryan Pierce, Glenn Henninger, Joe Kulesa, Doug Moore

FHWA – Felix Gonzalez



* Stacey will be Project Director until Winter 2024/2025. Nick will be Project Director for the remainder of the project.

Project Locations

- This project includes over 230 locations in Jefferson County, St. Louis City, and St. Louis County
- St. Louis County has contributed funds to this project to include work on St. Louis County's roads. *(See budget slide for more details)*

Data Analysis

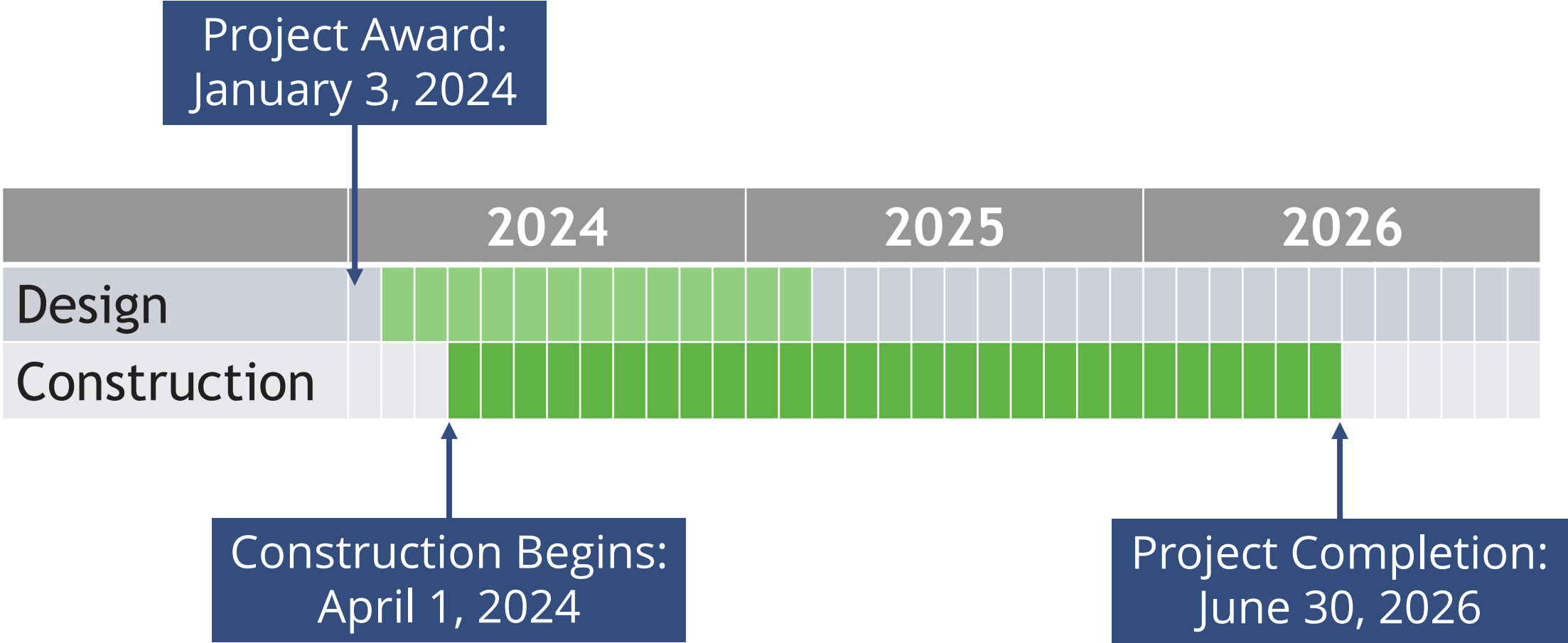
- MoDOT and St. Louis County studied crash histories from a five-year period from 2016 to 2020
- During that period, there were 5,321 fatal and serious injury crashes in these three counties

Project Budget: \$52 million

	MoDOT Roadways	St. Louis County Roadways *
Engineering, Stipends, RW, UT	\$8,500,000	\$1,000,000
Design-Build Contract	\$39,500,000	\$3,000,000
<i>Total Budget</i>	<u>\$48,000,000</u>	<u>\$4,000,000</u>

* St. Louis County project includes work on St. Louis County Roads only. This budget consists of \$2 million in Federal Safety Funds and \$2 million in St. Louis County funds.

Project Schedule



Individual locations will be completed throughout each year.

What will be constructed first?

- Construction will begin in April, installing retroreflective backplates to make signals more visible and chevron signs to make curves more visible.



DBE and Workforce Diversity Requirements

- Disadvantaged Business Enterprise (DBE)
 - 18% for Professional Services
 - 14% for Construction Activities
- Workforce Diversity
 - 14.7% Minority
 - 6.9% Female
 - 2 On-the-Job Trainees (OJT) for Construction

Project Outcomes

	By the Numbers
Total Locations Anticipated	230+
Innovative Countermeasures and Standards Included	37
Estimated Fatal and Serious Injury Crashes Reduced Over 10-year Period	170

Top scoring improvements:

- Improve Right Turn Angle
- Offset Existing Left Turn Lanes
- Improve Signal Visibility

St. Louis County

- This project includes work on St. Louis County and MoDOT roads in all seven districts of St. Louis County

\$1.2 Billion

In estimated societal savings due to crash reduction



Source: Missouri Department of Transportation and Federal Highway Administration



170

Fatal and Serious Injury Crashes Reduced
(Estimated) over ten-year period