

The MoDOT Aviation Section would like to thank Missouri airports, passengers, airport users, tenants, and stakeholders for their valuable input and participation on this project.

 Like us on Facebook:
[facebook.com/MoDOTStatewide](https://www.facebook.com/MoDOTStatewide)

 Follow us on Twitter:
twitter.com/modot

 Check out our blog:
modotblog.blogspot.com

 Check out our news feed:
modot.com/xml/Statewide.xml



MoDOT Aviation Section

105 West Capitol Avenue
P.O. Box 270
Jefferson City, MO 65102
(573) 751-2589
aviation@modot.mo.gov

M12 | Steele Municipal Airport Steele, MO



Missouri Statewide Airports Economic Impact Study

- Missouri is served by **nine** commercial service airports in the state and **99** publicly owned, public use general aviation airports.
- Missouri's commercial service airports enplaned nearly **12 million** passengers in 2012.
- Missouri supported approximately **264,000** general aviation visitors at airports in 2012.
- Airports in Missouri support more than **420** on-airport aviation related businesses.
- More than **\$130 million** was invested in the state's airports in 2012 through updates and renovations.
- Missouri airports support **11** scheduled commercial airlines throughout the state.
- More than **195,000** tons of cargo are transported by air in Missouri each year.

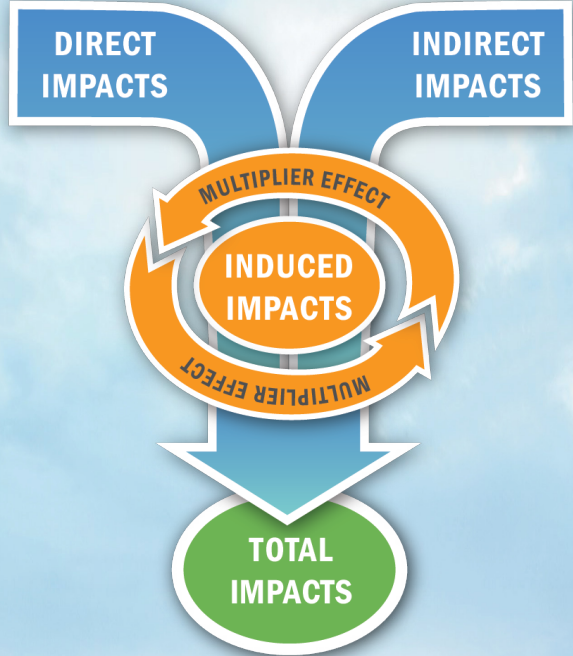


Prepared by: Landrum & Brown, Incorporated | 2013





Statewide Economic Impacts



Economic Impact Study

Missouri's airport system is not only a means of safe and efficient transportation, but also provides over 100,000 jobs and accounts for more than \$11 billion in total economic activity. Each of the airports in Missouri has a specific impact on its local community that goes far beyond the local level to serve as a catalyst for economic growth.

STUDY PROCESS

Similar to the 2002 Missouri economic analysis, the economic impact generated by Missouri's airports is quantified in terms of direct, indirect, and induced economic activity and spending.

Direct impacts are based on the employment, wages, and sales generated by on-airport business activity. Common direct impacts stem from tenants like fixed-base operators (FBOs) or aircraft maintenance operations.

Indirect impacts arise from visitors arriving by aircraft and their spending on food, hotels, entertainment, transportation, and other activities. These expenditures support additional jobs, wages, and output.

Induced impacts, also referred to as multiplier impacts, are created through the "spin-off" effect of users purchasing goods and services from other local businesses and through workers spending wages and other income for household goods and services. For example, when an airport employee is paid, he or she uses their salary to purchase local goods and services at businesses in the area, which in turn spend their revenue locally, thus generating additional economic activity in the region.

Combined, the direct, indirect and induced impacts determine the total economic impacts for each airport and the statewide airport system.

IMPACT MEASURES

Jobs represent the number of people who are employed and are presented as full-time equivalent jobs.

Payroll represents the total annual wages, salaries, and benefits paid to all workers.

Output measures the value of goods, services and capital expenditures.

TOTAL JOBS	100,621
TOTAL PAYROLL	\$3,128,646,000
TOTAL OUTPUT	\$11,101,699,000

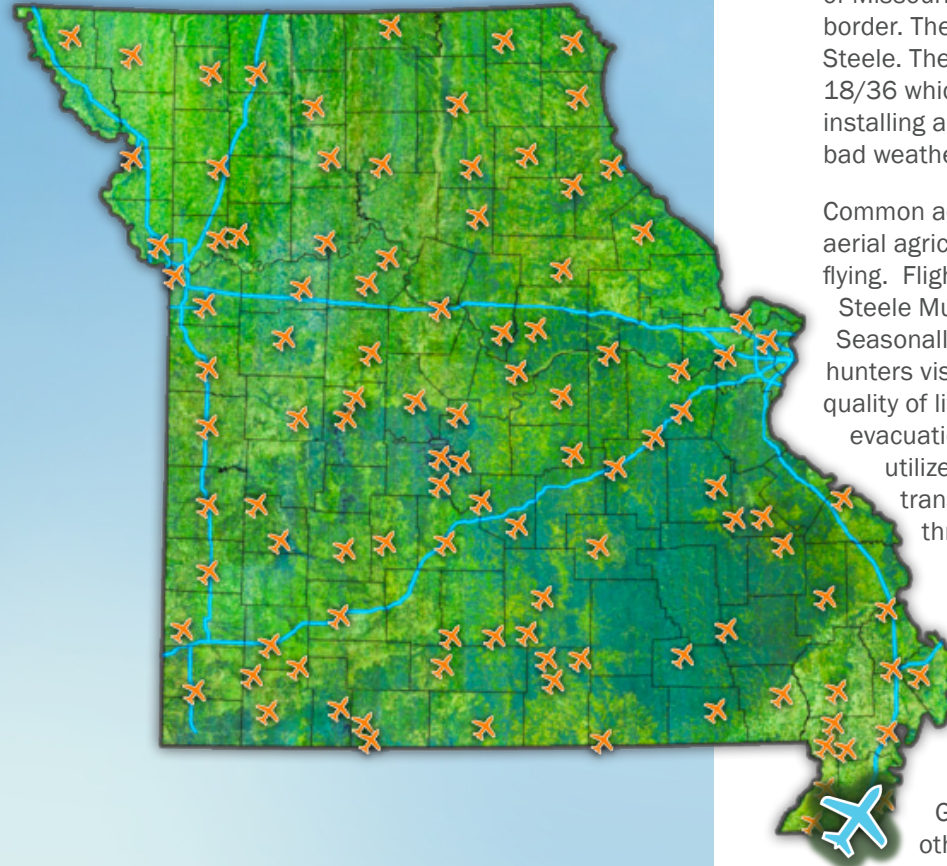


Steele Municipal Airport

TOTAL JOBS
15

TOTAL PAYROLL
\$537,000

TOTAL OUTPUT
\$4,844,000



BENEFITS OF THE AIRPORT

Steele Municipal Airport is located in the southeast corner of Missouri approximately 10 miles north of the Arkansas border. The airport is owned and operated by the City of Steele. The airport has one asphalt paved runway, Runway 18/36 which is 3,984 feet long. In 2013, the airport is installing an instrument approach to aid pilots landing in bad weather conditions.

Common activities at the airport include corporate flying, aerial agricultural spraying, air cargo, and recreational flying. Flight instructors from nearby airports often utilize Steele Municipal for flight training maneuvers and drills. Seasonally, the airport also serves as a gateway to duck hunters visiting local preserves. The airport enhances the quality of life in the area by supporting emergency medical evacuation and transports. Blytheville Arkansas Medevac utilizes the airport for training purposes and also transports critically ill or injured patients to hospitals throughout the region.

Two aerial applicators based at the airport apply custom fertilizer, seed and chemicals year-round to farms throughout the region: Earl's Flying Service and Coppage Farm Service. Earl's Flying Service is also the FBO on the airfield, providing hangar and tie-down rentals and a courtesy car. Pemco Storage, Grand Air, Kellair, and Rainey Aerial Ag Service are other companies who rely on the airport to conduct day-to-day business operations.