

# UNFUNDED NEEDS: PUBLIC MEETINGS

## Southeast District



Missouri

HIGH-PRIORITY UNFUNDED NEEDS



DRAFT  
July 2024



# FUNDING DISTRIBUTION

*Fiscal Year 2025-2029 Amounts*

Total Distributed Construction Program Funds					
2025	2026	2027	2028	2029	Total
\$1,764	\$1,352	\$1,347	\$1,343	\$1,331	\$7,137

Safety					
2025	2026	2027	2028	2029	Total
\$58	\$58	\$58	\$58	\$58	\$290

Asset Management					
2025	2026	2027	2028	2029	Total
\$706	\$886	\$866	\$1,171	\$921	\$4,550

System Improvements					
2025	2026	2027	2028	2029	Total
\$1,000	\$408	\$423	\$114	\$352	\$2,297

Distributed based on:

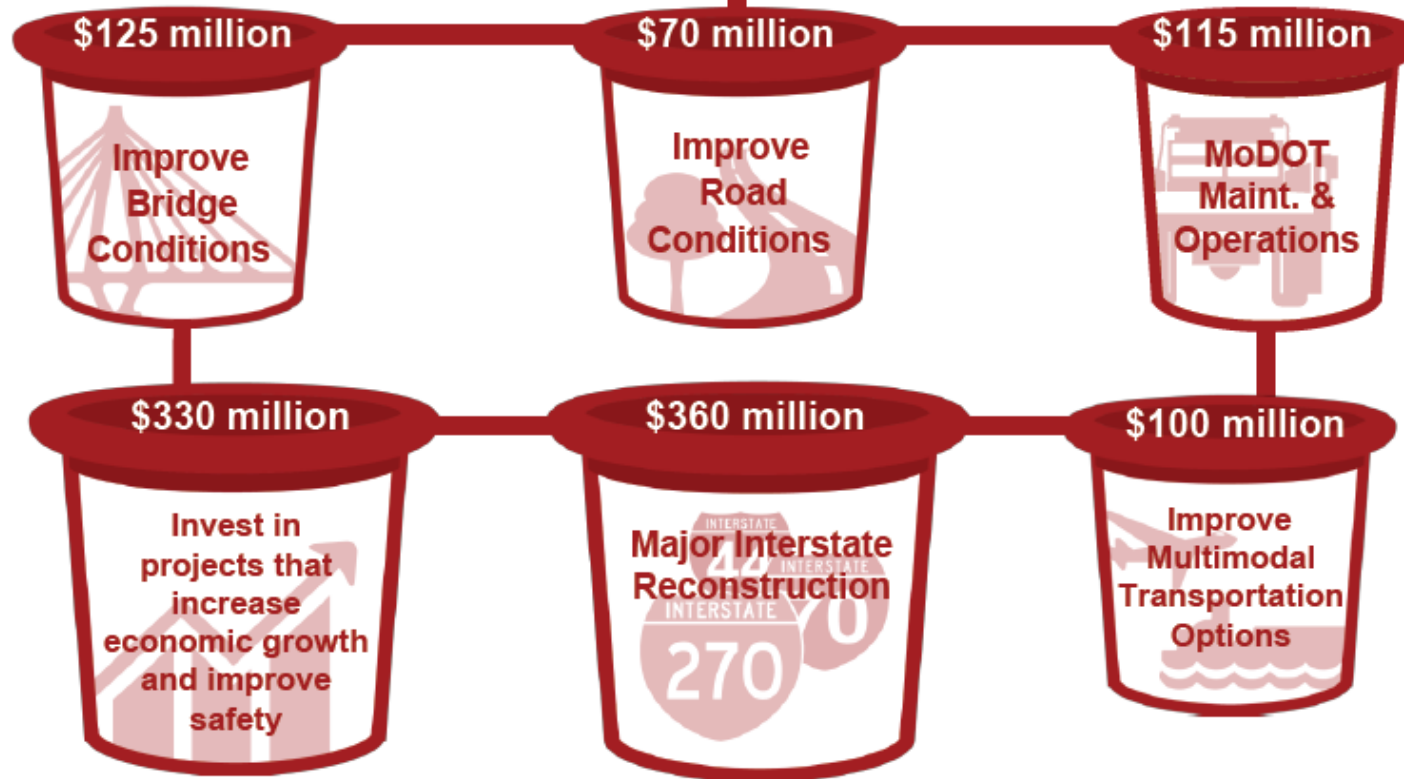
- System size
- System usage
- Fatalities/serious injuries
- Population
- Employment

\*Does not include General Assembly Designated Funds



# HIGH-PRIORITY UNFUNDED ANNUAL TRANSPORTATION NEEDS

\$1.1 billion



## THE NEEDS

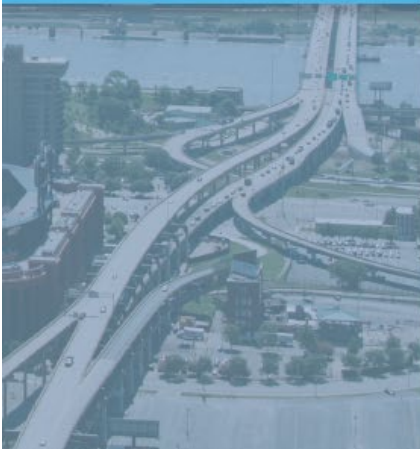
# THE OUTCOME

- \$4.4 billion of tiered road and bridge needs in new updated document
  - Three tiers
  - Tier one = could be accomplished in the current STIP horizon
- \$1 billion of multimodal needs



Missouri

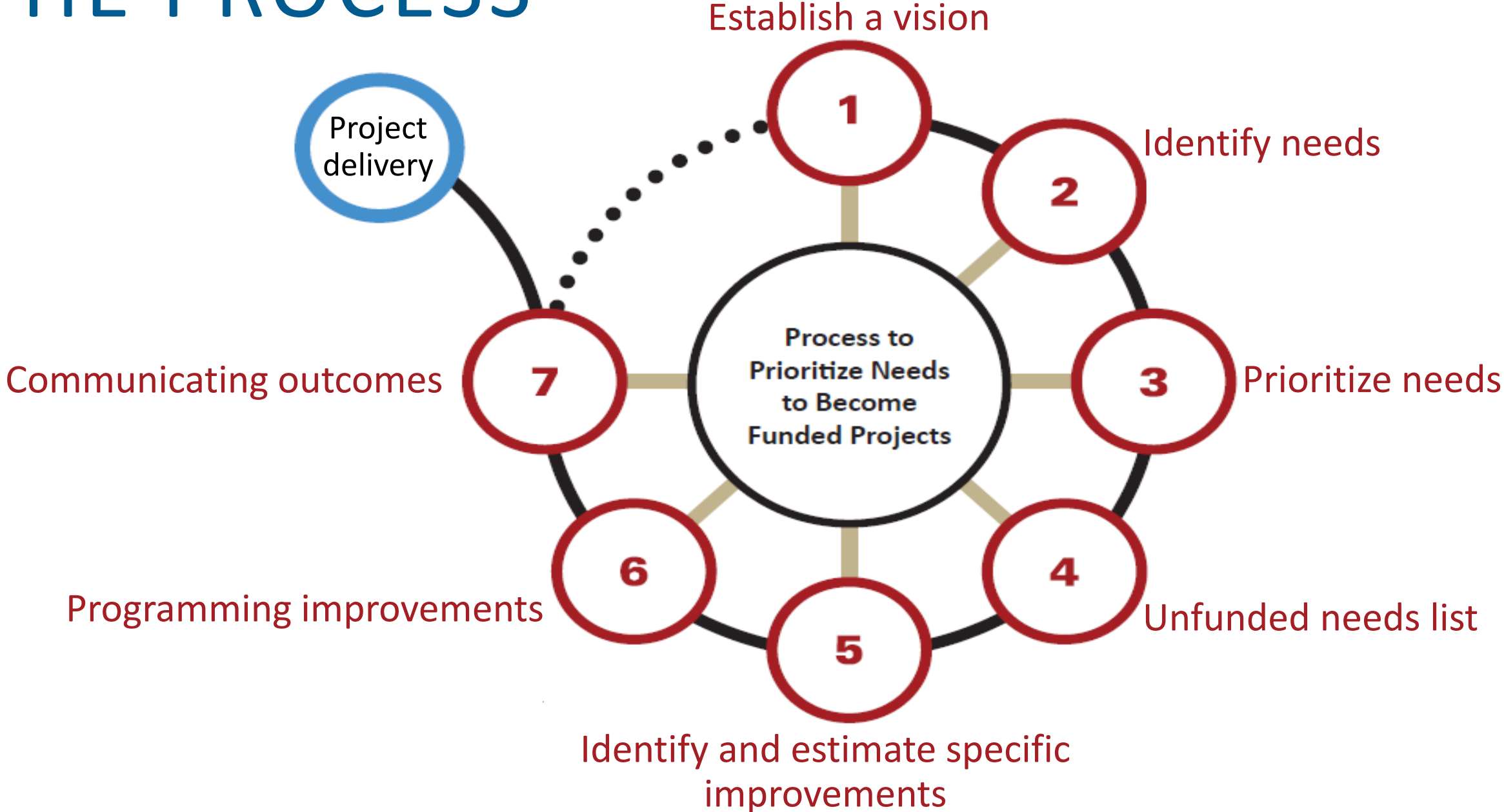
# HIGH-PRIORITY UNFUNDED NEEDS



*DRAFT*  
*July 2024*



# THE PROCESS

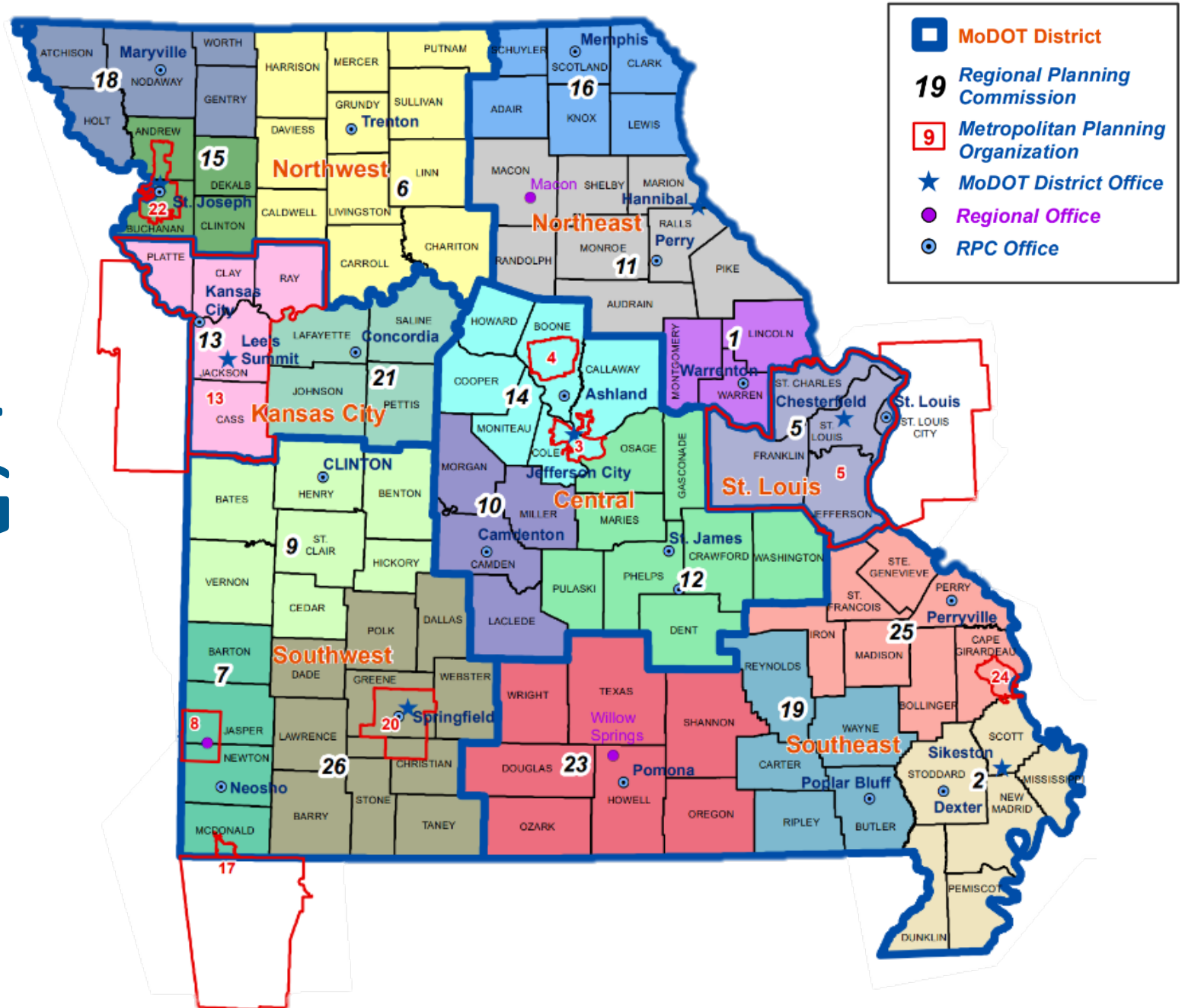


# Prioritize Needs

3

**Prioritize needs** – MoDOT district offices work with MPOs and RPCs to annually prioritize regional needs, collectively. This requires multiple planning entities within a MoDOT district to work collectively to create priorities among all needs identified, regardless of location. Safety, traffic volume, asset condition data are used to help select the highest priorities within a MoDOT district boundary.

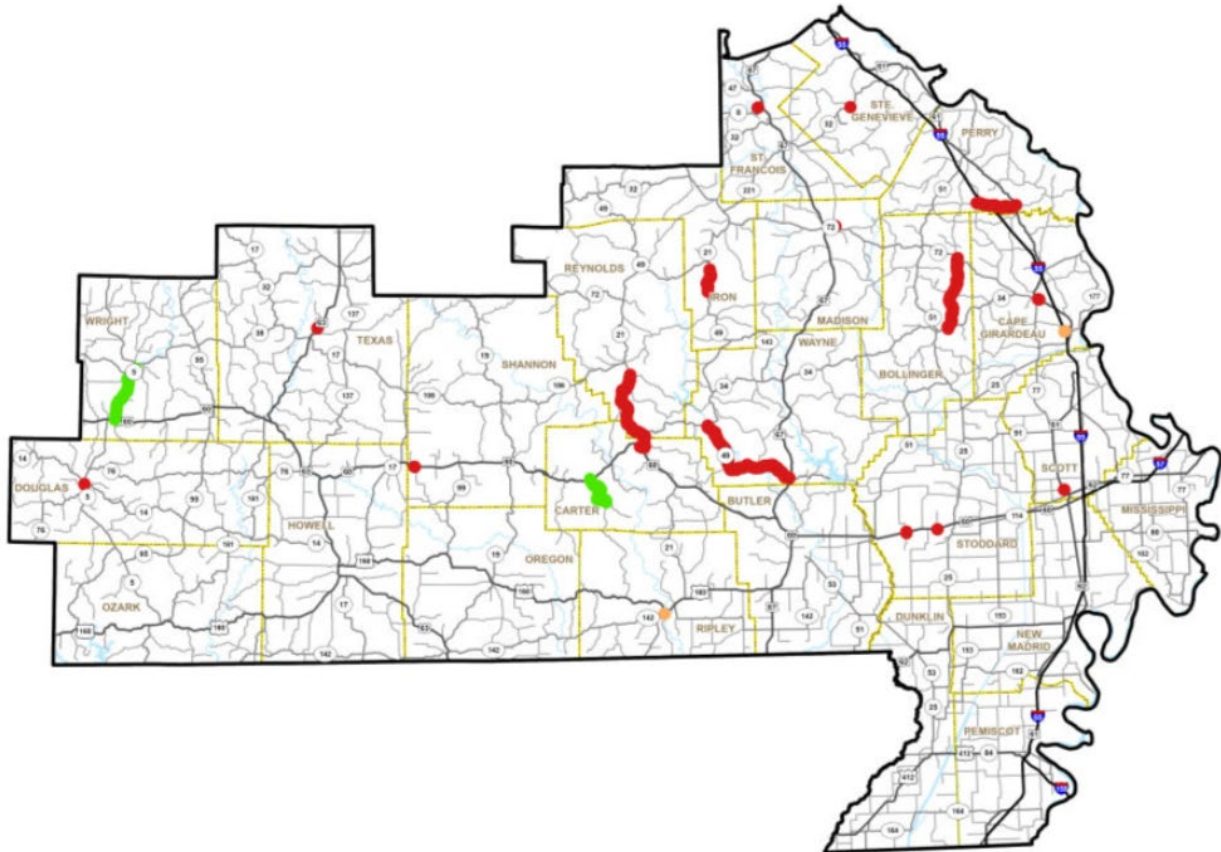
# REGIONAL PLANNING PARTNERS





# HIGH-PRIORITY UNFUNDED ROAD AND BRIDGE NEEDS

Tier 1 - \$48 million

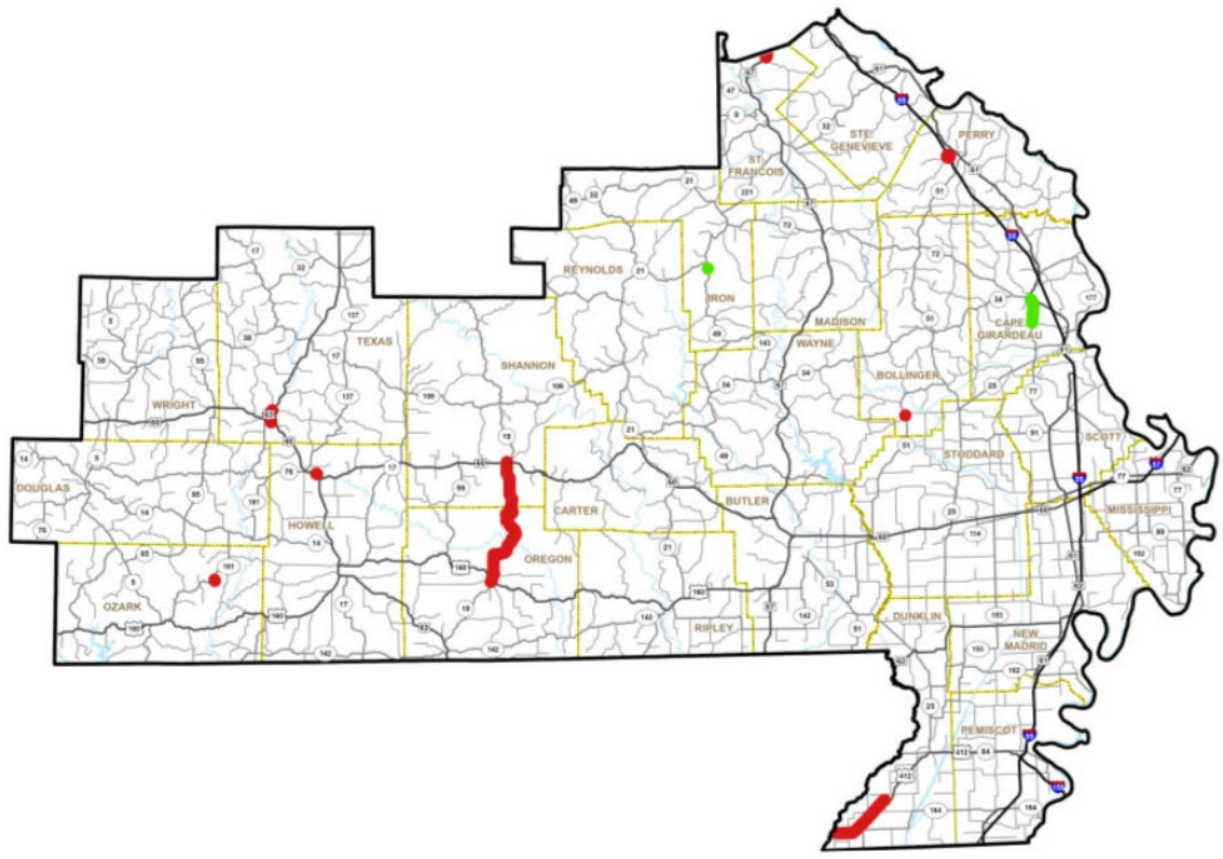


# SOUTHEAST - TIER 1



# HIGH-PRIORITY UNFUNDED ROAD AND BRIDGE NEEDS

Tier 2 - \$179 million



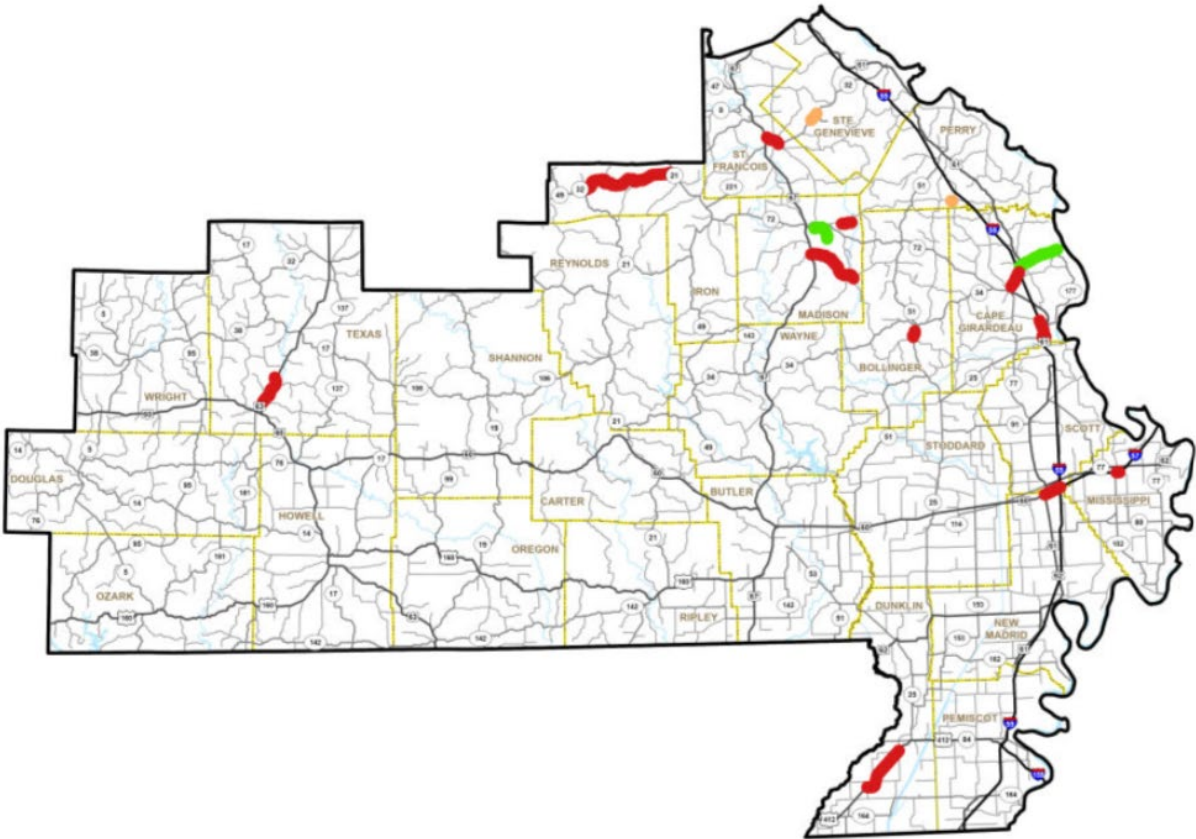
- Improve Bridge Conditions
- Improve Road Conditions
- Increase Economic Growth and Improve Safety
- Major Interstate Reconstruction

## SOUTHEAST - TIER 2



# HIGH-PRIORITY UNFUNDED ROAD AND BRIDGE NEEDS

Tier 3 - \$170 million



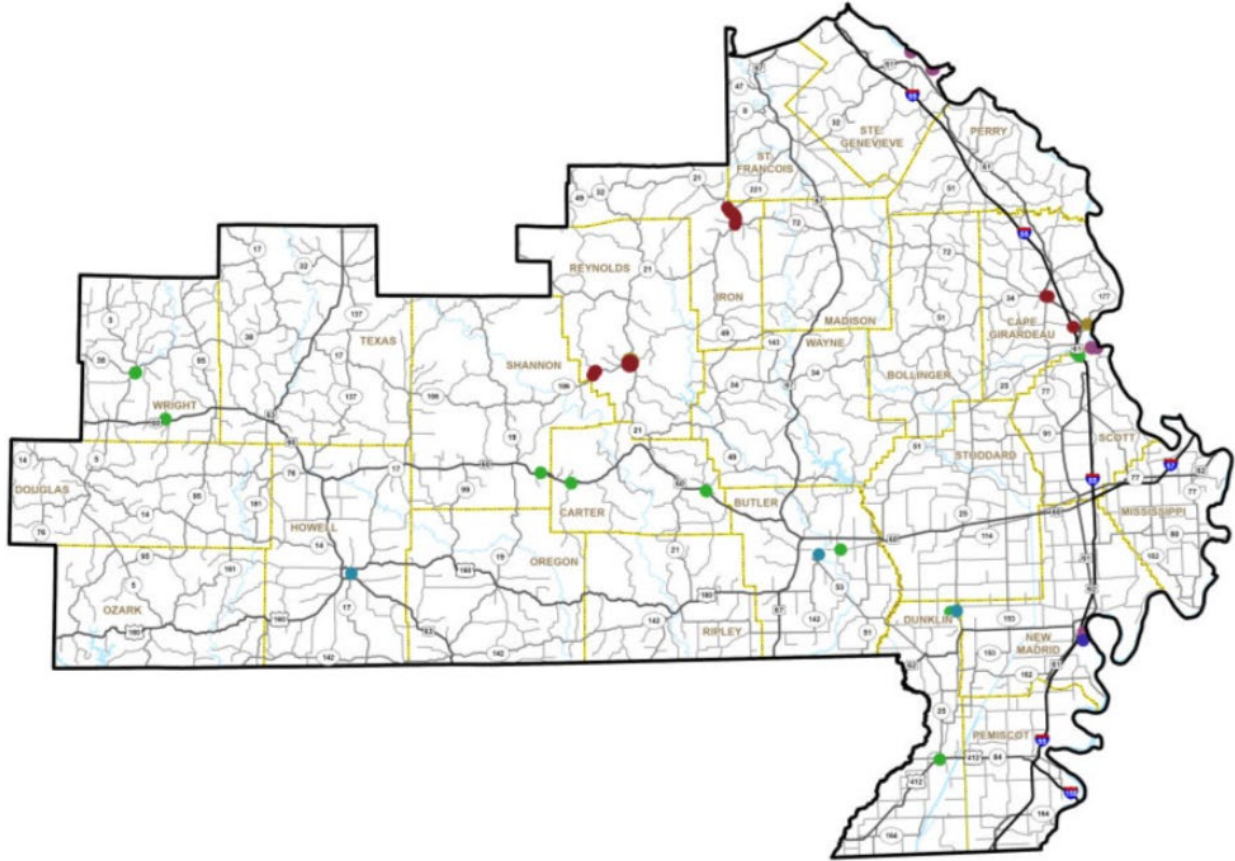
- Improve Bridge Conditions
- Improve Road Conditions
- Increase Economic Growth and Improve Safety
- Major Interstate Reconstruction

## SOUTHEAST - TIER 3



# HIGH-PRIORITY UNFUNDED MULTIMODAL NEEDS

Multimodal - \$89 million



# SOUTHEAST - MULTIMODAL



# SOUTHEAST SUMMARY

TIER	IMPROVE BRIDGE CONDITIONS	IMPROVE ROAD CONDITIONS	MAJOR INTERSTATE RECONSTRUCTION	INCREASE ECONOMIC GROWTH & IMPROVE SAFETY	IMPROVE MULTIMODAL TRANSPORTATION OPTIONS	TOTAL
TIER 1	\$7,947	\$5,364		\$34,247		\$47,558
TIER 2		\$40,779		\$138,322		\$179,101
TIER 3	2,983	\$2,130		\$164,735		\$169,848
MULTI-MODAL					\$89,193	\$89,193
<b>TOTAL</b>	<b>\$10,930</b>	<b>\$48,273</b>	<b>\$0</b>	<b>\$337,304</b>	<b>\$89,193</b>	<b>\$485,700</b>

*Amounts in \$1,000 in 2023 Dollars (Uninflated)*

# STATEWIDE - TOTALS BY PRIORITY

DISTRICT	TIER 1	TIER 2	TIER 3	MULTIMODAL	MAJOR BRIDGE	STATEWIDE	GRAND TOTAL
NORTHWEST	\$25,297	\$83,406	\$93,368	\$34,734	\$173,400	-	\$410,205
NORTHEAST	\$21,400	\$94,500	\$94,000	\$45,750	\$75,000	-	\$330,650
KANSAS CITY RURAL	\$9,450	\$54,111	\$39,532	\$29,866	-	-	\$132,959
KANSAS CITY URBAN	\$100,000	\$378,590	\$369,050	\$209,171	\$30,500	-	\$1,087,311
CENTRAL	\$62,700	\$235,621	\$171,021	\$115,000	-	-	\$584,342
ST. LOUIS	\$155,660	\$593,900	\$756,820	\$328,353	\$216,000	-	\$2,050,733
SOUTHWEST RURAL	\$42,439	\$187,992	\$195,349	\$98,995	-	-	\$524,775
SOUTHWEST URBAN	\$11,000	\$109,300	\$69,300	\$55,750	-	-	\$245,350
SOUTHEAST	\$47,558	\$179,101	\$169,848	\$89,193	\$80,100	-	\$565,800
STATEWIDE	-	-	-	-	-	\$4,566,000	\$4,566,000
<b>Grand Total</b>	<b>\$475,504</b>	<b>\$1,916,521</b>	<b>\$1,958,288</b>	<b>\$1,006,811</b>	<b>\$575,000</b>	<b>\$4,566,000</b>	<b>\$10,498,124</b>

# STATEWIDE - TOTALS BY TYPE

DISTRICT	IMPROVE BRIDGE CONDITIONS	IMPROVE ROAD CONDITIONS	INCREASE ECONOMIC GROWTH & IMPROVE SAFETY	MAJOR INTERSTATE RECONSTRUCTION	MULTIMODAL	GRAND TOTAL
NORTHWEST	\$75,403	\$26,794	\$56,474	\$43,400	\$34,734	\$236,805
NORTHEAST	\$14,700	\$15,075	\$180,125		\$45,750	\$255,650
KANSAS CITY RURAL		\$76,067	\$27,026		\$29,866	\$132,959
KANSAS CITY URBAN		\$104,000	\$743,640		\$209,171	\$1,056,811
CENTRAL	\$1,296	\$4,041	\$464,005		\$115,000	\$584,342
ST. LOUIS	\$178,790	\$20,000	\$429,840	\$877,750	\$328,353	\$1,834,733
SOUTHWEST RURAL		\$13,046	\$412,734		\$98,995	\$524,775
SOUTHWEST URBAN			\$189,600		\$55,750	\$245,350
SOUTHEAST	\$10,930	\$48,273	\$337,304		\$89,193	\$485,700
STATEWIDE	-	\$25,000	\$721,000	\$3,800,000	\$20,000	\$4,566,000
MAJOR BRIDGE	\$575,000	-	-	-	-	\$575,000
<b>Grand Total</b>	<b>\$856,119</b>	<b>\$332,296</b>	<b>\$3,561,748</b>	<b>\$4,721,150</b>	<b>\$1,026,811</b>	<b>\$10,498,124</b>

To view the document and submit a comment:  
[modot.org/unfundedneeds](https://modot.org/unfundedneeds)

---

**NEXT STEPS**

