

2020 Virtual Innovations Challenge Showcase



Productivity Statewide Winner



Wing Camera – NW District

Productivity Statewide Winner



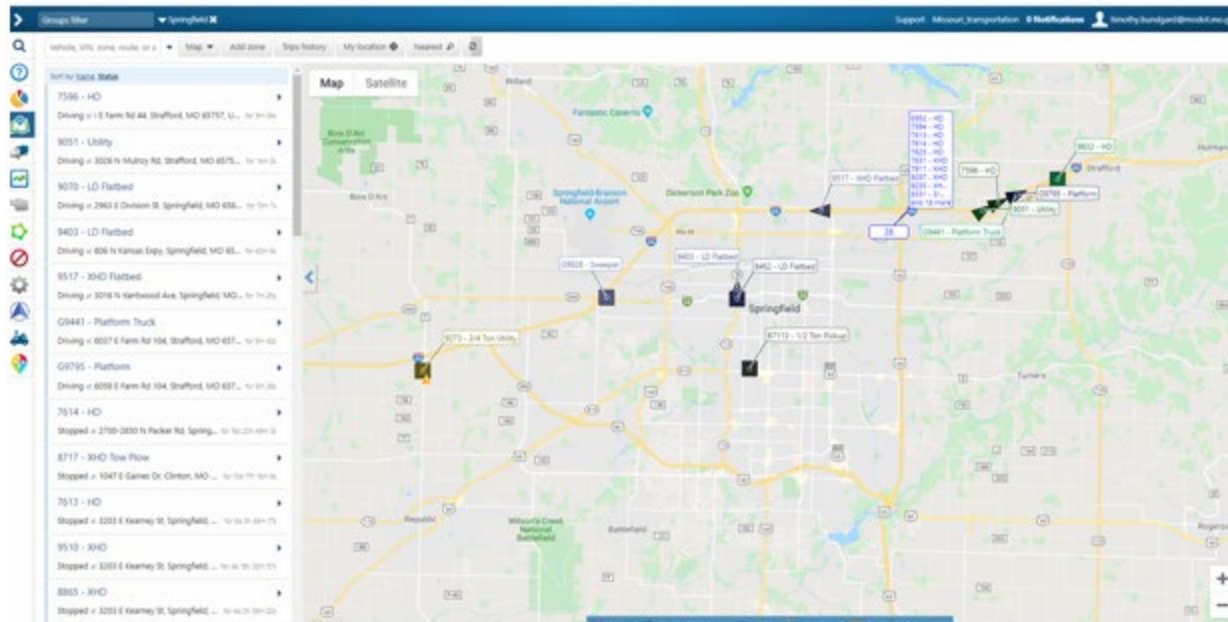
**Signals and Lighting Training
Facility – KC District**

Productivity Statewide Winner



**Full-Scale Traffic Incident
Management Exercise – SW District**

Productivity Statewide Winner



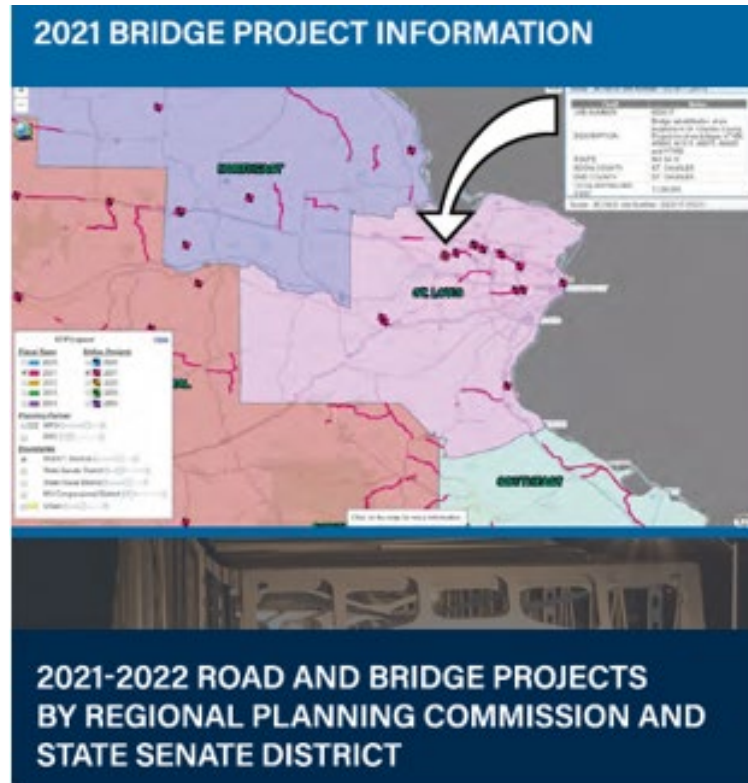
GeoTab and Proximity – SW District

Projects Statewide Winner




Scout Waze Integration – KC District

Projects Statewide Winner



**Online STIP Map – Transportation
Planning Division**

Projects Statewide Winner

 Estimate Item Detail for Contract ID 180622-D01 Nov 12, 2019

Contract ID	Project Number	Category Number	Line Item Number	Item Code	Description	Reported Quantity	Quantity Installed To Date	Quantity Paid To Date	Unit Price	Total Current Paid
180622-D01	JSP3129	0051	1350	6091011	CONCRETE CURB (OVER 6 IN. HEIGHT) TYPE S		0.000	0.000	\$46.71	
			1360	6091052	CURB AND GUTTER TYPE B	117.100	117.100	117.100	\$36.33	\$4,254.24
			1370	6092011	INTEGRAL CURB (6 IN. HEIGHT AND UNDER) TYPE A	427.300	427.300	427.300	\$25.95	\$11,088.44
			1380	6092021	INTEGRAL CURB (OVER 6 IN. HEIGHT) TYPE A	132.200	132.200	132.200	\$31.14	\$4,116.71
			1390	6143012	MANHOLE FRAME AND COVER, TYPE 2		0.000	0.000	\$519.03	
			1400	6189901	MISC.	1.000	1.000	1.000	\$9,831.05	\$9,831.05
			1410	6191000	PAVEMENT EDGE TREATMENT	232.000	232.000	232.000	\$5.19	\$1,204.08
			1420	6200009	PREFORMED THERMOPLASTIC PAVEMENT MARKING, 6 IN. WHITE	205.000	205.000	205.000	\$6.26	\$1,283.30
			1430	6200015	PREFORMED THERMOPLASTIC PAVEMENT MARKING, 24 IN. WHITE	31.000	31.000	31.000	\$19.82	\$614.42
			1440	6279901	MISC.	1.000	1.000	1.000	\$1,017.71	\$1,017.72
			1450	8061007A	CURB INLET CHECK		0.000	0.000	\$132.30	
			1460	8061016	SEDIMENT REMOVAL		0.000	0.000	\$136.45	
			1470	8061019	SILT FENCE		0.000	0.000	\$2.34	
			1480	9011010	RELOCATED POLE	4.000	4.000	4.000	\$1,038.16	\$4,152.64
			1490	9013002	CONDUIT, 2 IN. RIGID, IN TRENCH	31.000	31.000	31.000	\$11.82	\$366.42
			1500	9016110	PULL BOX, PREFORMED CLASS 1	2.000	2.000	2.000	\$981.63	\$1,963.26
			1510	9017110	CABLE, 10 AWG 1 CONDUCTOR, POLE AND BRACKET	320.000	320.000	320.000	\$1.23	\$393.60
			1520	9017407	CABLE-CONDUIT, 1 IN., 2 CONDUCTORS AND 1 BARE NEUTRAL, 8 AWG	63.000	63.000	63.000	\$3.29	\$207.27
			1530	9018230	POLE FOUNDATION (30 FT. OR 9.0 M MOUNTING HEIGHT)	4.000	4.000	4.000	\$1,546.96	\$6,187.84
			1540	9029902	MISC.	3.000	3.000	3.000	\$698.96	\$2,096.88
1550	9031010	CONCRETE FOOTINGS, EMBEDDED	0.100	0.100	0.100	\$3,053.12	\$305.31			
1560	9031210	STRUCTURAL STEEL POSTS	40.000	40.000	40.000	\$10.18	\$407.20			
1570	9031270A	2 IN. PSST POST - 12 GA.	11.000	11.000	11.000	\$30.53	\$335.83			
1580	9031271	POST ANCHOR FOR 2 IN. PSST - 12 GA.	3.000	3.000	3.000	\$40.71	\$122.13			
1590	9031280	2.5 IN. PSST POST - 12 GA.	11.000	11.000	11.000	\$36.64	\$403.04			
1600	9031281	POST ANCHOR FOR 2.5 IN. PSST - 7 GA.	3.000	3.000	3.000	\$48.85	\$146.55			
1610	9039902	MISC.	8.000	8.000	8.000	\$305.31	\$2,442.48			
Summary for Category 0051			Total Amount Cities Portion						\$221,748.28	
Summary for Project Number: JSP3129			Total Amount of Project						\$1,327,473.65	

Funding From Other Sources – CD District

Projects Statewide Winner



Barrier Saddle – SL District

Tool & Equipment Statewide Winner



Channelizer Light Mount – CD District

Tool & Equipment Statewide Winner



Bobcat Paver – KC District

Tool & Equipment Statewide Winner



Hydraulic Power Unit – SW District

Tool & Equipment Statewide Winner



Reflective Door – KC District

Director's Safety Award



**Real-Time Digital Warnings – Highway
Safety/Traffic Division**

Director's Service Award



Route Surveys for Superload Moves in Missouri

**Superload Connect – Motor Carrier
Services Division**

Director's Stability Award



EAC Resources

EAC Resource Center – KC District

Dickson People's Choice Award



Wing Camera – NW District

See You Next Year!

