

2022 Innovations Showcase





Productivity Statewide Winner

Signing Information System

SIGNING CREW - JC

DATE	CALLER	CAUSE	TYPE	STATUS	COUNTY	RT	DIRECTION	Ramp / Crossroad / Mile Marker	SIGN TEXT	COMMENTS	INDIVIDUAL STATUS:				SIGN MEASUREMENTS			POST MEASUREMENTS			POST DROPS / N	
											SIGN	POST	TYP	DIG	SIGN TYPE	WIDTH	HEIGHT	POST TYPE	SIZE	# POSTS	P1	P2
6/28/20	Bruce	Wind	Routine Repair	READY	Boone	63	N	Deer Park	Tree	Needs brackets / Turned right way	NO	NO	NO	NO	7			PIPE		1		
7/11/21	Cole	Knocked Down	Routine Repair	READY	Callaway	1-70	W	mm 145.6	Hwy 61 / Watson 1 Mile	P1 good but needs stoned back up w/ new breakaway plate. P2 is good and standing. Sign is good but split in half and will need to be replaced and replaced in place. Sign, base, studs, posts are all good. Posts are 6x12 beams and will need new breakaway plate to be set in place for the top section of sign.	ON SITE	ON SITE	NO	NO	D-Board			I-BEAM	6x12	2		
7/12/21	Cole	Knocked Down	Routine Repair	READY	Callaway	1-70	W	mm 149 D	Auraville / Mexico / Fulton 1 mile	Sign on post are a fine. Just needs stoned back but mark. Bring new blue bolts on new zip post clamps. (4th)	ON SITE	ON SITE	NO	NO	D-Board			PIPE		2		
8/10/21	Jon	Knocked Down	Routine Repair	READY	Cooper	1-70	W	Roadside Park Exit Dgn	Roadside Park Exit Dgn	Partly behind a guardrail and at the bottom of the hill off HWY 63 so it'll be a tight fit being close to the HWY. Also all components are good just needs stoned up. The sign just needs both zip posts stoned back up and new GREEN brackets used to remount the sign. Everything is in good reusable condition.	ON SITE	ON SITE	NO	NO	D-Board			I-BEAM	4x6	2		
9/23/21	Cole	Hit By Vehicle	Routine Repair	READY	Boone	63	N	WW Broadway Exit	Exit w/ arrow	Needs to be dry or frozen and to get behind sign or lane drop.	ON SITE	ON SITE	NO	NO	D-Board			PIPE		2		
9/29/21	Cole	Hit By Vehicle	Routine Repair	READY	Boone	54	E	Exit 242	Exit w/ arrow	Everything is in good reusable condition.	ON SITE	ON SITE	NO	NO	D-Board			I-BEAM		2		
4/21/19	Bruce	Sign Replacement	Sign Replacement	Lane-Drop	Cole	50	W	50 WB	ACT 179 / 2 City Club Dr & Truman Blvd / Apache Flats	Needs to be dry or frozen and to get behind sign or lane drop.	HERE	NO	NO	NO	D-Board			I-BEAM		2		
1/15/21	Brock	Sign Replacement	Sign Replacement	Lane-Drop	Cole	63	S	63 SB - 2 lane	Westphalia 3/2 Freiburg 14/Rolla 45	Tight fit will need lane drop, sign in warehouse inventory.	NO	NO	NO	NO	D-Board	5'		I-BEAM				
1/24/20	Bruce	Sign Replacement	Sign Replacement	Lane-Drop	Cooper	1-70	W	Past blackwater, and of district MM 86.6	Entering Saline county	REMOVED GUARD RAIL, need lane drop on I70.	HERE	NO	NO	NO	D-Board			I-BEAM				
1/31/21	Matt	Warehouse Inventory	Sign Replacement	Night Work	Boone	50	W	Advanced to MD BLVD across capital plate	Exit 54 / North 63 up arrow	Max Luckman sent email wanting to use sign up in warehouse inventory.	HERE	NO	NO	NO	D-Board			???				Over the ad
1/1/21	Brock	Warehouse Inventory	?	?	Callaway	1-70	W	1-70 WB Ramp (RT D - 168) toward Williamsburg	1-70 / US - 40 WEST COAD -	In warehouse inventory, talk to Brandon on what to do. (6-1-21)	HERE	NO	NO	NO	D-Board			Shocker Bar				
1/15/21	Brock	Warehouse Inventory	Sign Replacement	?	OTHER	1-70	?	ROLLA	Exit 117 (small sign goes on exit that - Lebanon?)	GOES TO ROLLA / (60-1) VAN SPECIAL GUIDE	NO	NO	NO	NO	D-Board	2 1/2'						
1/1/21	Brock	Warehouse Inventory	?	?	OTHER	?	?	???	Exit West 54/53 -	In warehouse inventory, talk to Brandon and take on what to do. (6-1-21)	HERE	NO	NO	NO	D-Board			I-BEAM				
1/30/20	Bruce	Sign Replacement	Sign Replacement	CHECK	Find A Spot	63	N	83NB	City Limit COAD POP	Find a location in COAD	HERE	NO	NO	NO	D-Board			I-BEAM				
1/25/21	Luke	Sign Replacement	Sign Replacement	CHECK	Find A Spot	?	?	???	Barricade Double Arrow	Check with Luke to find a spot for it	HERE	?	?	?	D-Board	6'		I-BEAM				
1/15/21	Brock	Sign Replacement	Sign Replacement	CHECK	Find A Spot	?	?	???	#2 - State Law (Orange and Black)	In inventory warehouse, need to figure out location to get rid of.	HERE	NO	NO	NO	D-Board	5'		I-BEAM				
1/29/21	Cole	Wind	Routine Repair	CHECK	Boone	1-70	E	Bangshaw Exit 127	Exit 127 w/ arrow	Sign and posts are all good it just needs a new breakaway plate on one side due to it being broken.	ON SITE	ON SITE	NO	NO	D-Board			I-BEAM				
1/29/21	Cole	Hit By Vehicle	Routine Repair	CHECK	Boone	1-70	E	Connector Exit Gate	Exit w/ arrow	The west gate sign for the Connector headed Eastbound 1-70 has been knocked off the post and should be replaced but not back on until the weekend.	ON SITE	ON SITE	NO	NO	D-Board			???				
7/12/21	Cole	Erosion	Warehouse Repair	Need Dig-Rite	Boone	1-70	W	Center Overcross @ MM 104 D	On Urinary/Emergency Vehicles	The top of the studs has eroded and will need a new stub put in. Signs and top post are in good condition.	ON SITE	ON SITE	NO	NO	Foot Short			POST		1		
7/13/21	Cole	Hit By Vehicle	Routine Repair	Need Dig-Rite	Boone	1-70	W	Exit 126	Exit 126 w/ Arrow	Sign is good, P1 will need top B. bottom replaced, P2 has good top but bottom, studs will need to be replaced.	ON SITE	ON SITE	NO	NO	D-Board			I-BEAM	4x6	2	Need drop	Need drop

Signing Information System Central District

Productivity Statewide Winner



**Signing and Signals
Training Lot
KC District**

Productivity Statewide Winner



**Buy America NTPEP
Central Office
Construction & Materials Division**

Productivity Statewide Winner



MAINTENANCE MANAGEMENT SYSTEM

MMS Work Plan Progress and Budget Central Office Maintenance Division

Projects Statewide Winner

<u>SW - Work Zone Crash Reporting Form</u>	
<i>This report contains information that is protected from disclosure by federal law, 23 USC Section 409 and the Missouri Open Records Law (Sunshine Act), Section 610.021 RSMo. Please review MoDOT's policy and procedure manual on the Sunshine Act before releasing any of the information contained herein.</i>	
Department Over Work Zone Crash:	Select... <input type="checkbox"/> *
Name and Phone Number of Employee Creating this Report:	<input type="text"/>
Contract ID:	<input type="text"/>
Job No:	<input type="text"/>
County:	<input type="text"/>
Route:	<input type="text"/>

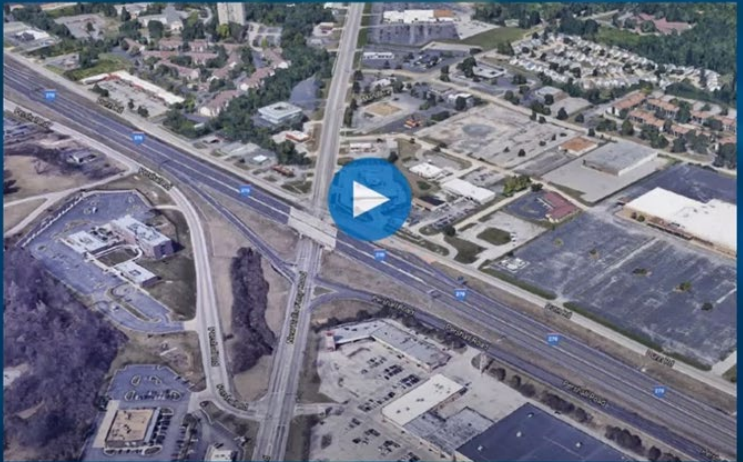
Work Zone Crash Reporting Form Southwest District

Projects Statewide Winner



[ABOUT](#) [SCHEDULES](#) [NEWSROOM](#) [OUTREACH](#) [CONSTRUCTION](#) [OPPORTUNITIES](#) [CONTACT US](#)

SHORT CLOSURES: Beginning December 3, MoDOT will close both eastbound and westbound I-270 intermittently at Lindbergh Boulevard. [View News Release](#)



Westbound exit ramp to New Halls Ferry Closed

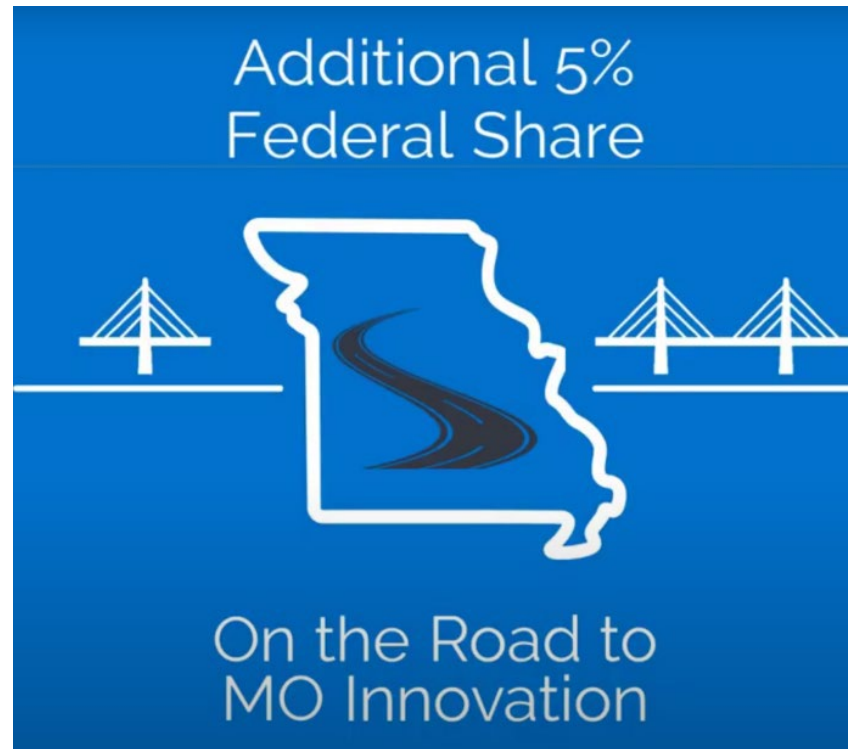
Beginning November 16, the westbound I-270 exit ramp to New Halls Ferry Road will close permanently.

[View Detour](#)

< >

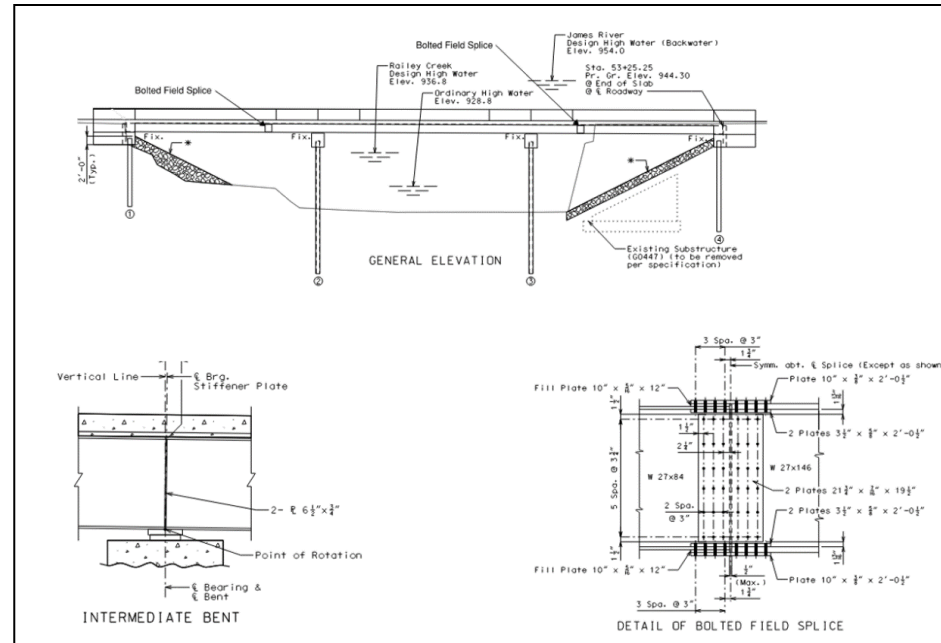
Initiating Public Engagement Approach St. Louis District

Projects Statewide Winner



**5% Increased Federal Share
St. Louis District**

Projects Statewide Winner



**Simple for Dead – Continuous for Live
Bridge Design Methodology
Northeast District**

Tool & Equipment Statewide Winner



**Access Door
Northeast District**

Tool & Equipment Statewide Winner



**Concrete Sled Design with
Ripper Teeth & Winch
Central District**

Tool & Equipment Statewide Winner



**Darnell's Ditching Bucket
Southeast District**

Tool & Equipment Statewide Winner



**Blade Saver
Central District**

Director's Safety Award

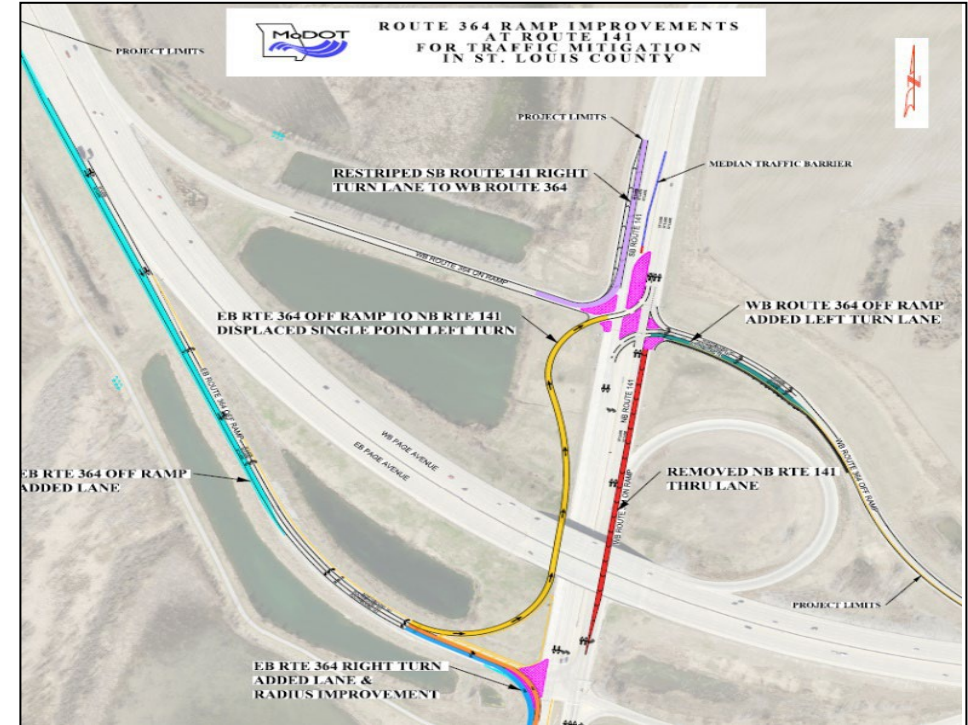


**Rotating Herbicide Rack
Southeast District**

Director's Service Award




CFA Tangent Retaining Wall



Displaced Left Turn

St. Louis District

Director's Stability Award




INNOVATIONS SHOWCASE

View Edit Delete Revisions Clone

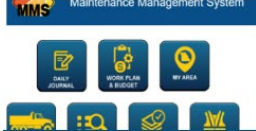
Innovations Showcase Homepage

EXPLORE


- Home
- Productivity Showcase
- Projects Showcase
- Tool and Equipment Showcase
- Showcase Archive



Productivity
Office and field processes, materials and products.
[CLICK HERE TO VIEW THE PRODUCTIVITY SHOWCASE](#)



Projects
Efforts resulting in exceptional results for transportation users or internal operations.
[CLICK HERE TO VIEW THE PROJECT SHOWCASE](#)



Tool and Equipment
Items fabricated or modified by MoDOT employees.
[CLICK HERE TO VIEW THE TOOL & EQUIPMENT SHOWCASE](#)

**Virtual Showcase
Central Office Transportation Planning**

Dickson People's Choice Award



Tire Steps from Southwest District

See You Next Year!



Innovations Challenge

