

North County rallies to support the "Just Slow Down" Safety Campaign.



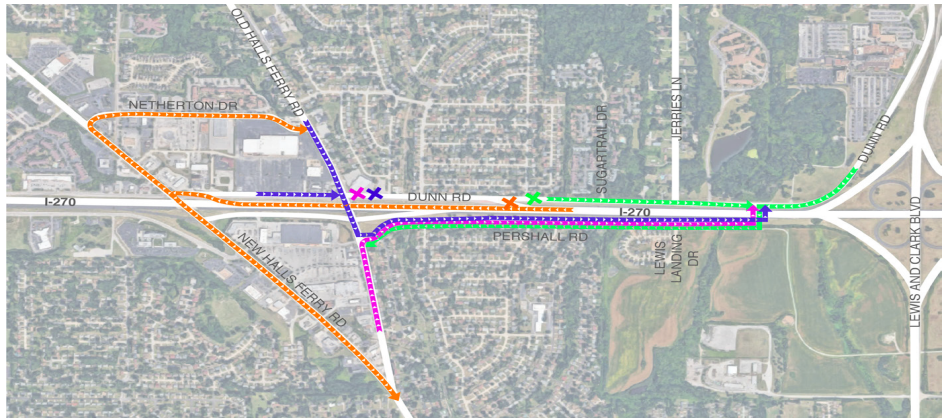
The I-270 North Project team would like to thank everyone that participated in creating the series of generational videos of people who live and work in the community. The message is simple, "Just Slow Down", especially within construction zones.

Visit www.i270north.org/gallery to see all the campaign videos.

Please remember buckle up, phone down, and slow down, especially in construction zones. We want everyone, including workers to arrive home alive.

Want to get involved with this campaign? Contact the I-270 North Project Team at: I270North@modot.mo.gov.

I-270 exit ramp and Dunn Road at Old Halls Ferry Road to close



Starting at 6 a.m. Monday, August 16, crews will close the westbound I-270 exit ramp to Old Halls Ferry. Additionally, Dunn Road from Old Halls Ferry to Linnell Drive will be closed.

Drivers planning to exit westbound I-270 to Old Halls Ferry will continue on westbound I-270 to the New Halls Ferry exit and use New Halls Ferry Road to continue to their destination. The detour for the Dunn Road closure will use Pershall Road and the new Pershall bridge over I-270. All detours will be signed.

Following the 60-day closure, the westbound I-270 exit ramp to Old Halls Ferry will reopen and this section of Dunn will reopen as a one-way westbound outer road.



Westbound lane of Pershall Road closed beginning August 9

Drivers who use Pershall Road between West Florissant Avenue and Elizabeth Avenue should be aware that beginning August 9, MoDOT will close the westbound lane of Pershall between West Florissant and Knollstone Drive. For nine months, only one eastbound lane will remain open to traffic while MoDOT begins converting this portion of Pershall to an eastbound one-way outer road.

Pershall from Elizabeth to Knollstone Drive will remain open to both eastbound and westbound traffic for several months during the first phase of construction. Signed detours will direct motorists from West Florissant to use Dunn to travel westbound.

Learn more about the I-270 North Project at www.i270north.org



I-270 North Community Spotlight



Deanna Venker

Chief Administrative Officer
St. Louis County

When partnerships happen between people-serving agencies, great things can happen for the public. A good example is the Missouri Department of Transportation's (MoDOT) I-270 North Project. Hundreds of people shared the table with MoDOT to help prioritize project deliverables, and work together to ensure that the needs of those most impacted by the project were met.

"There is a great deal of collaboration between MoDOT and its stakeholders on projects like this, and St. Louis County has been one of those partners for many years," said Deanna Venker, Chief Administrative Officer for St. Louis County. "We knew we would contribute to this project in the same way that we did on the U.S. Route 40/Interstate 64 project. We were able to cost share more than \$6 million worth of improvements that MoDOT was not in a position to address; items that were too important not to be included in a project of this magnitude."

Some of the items supported through St. Louis County funds include: lengthening I-270 bridges to provide space for dual left turn lanes on both New Halls Ferry Road and New Florissant Road; constructing sidewalks on both sides of Pershall Road between Old Halls Ferry and a new bridge west of Route 367; installing enhanced pedestrian crossings at eight Metro bus stop locations; and supporting installation of decorative street name signs in both directions on each of the I-270 bridges, as well as the new bridge being built west of Route 367.

Venker's career has afforded her the opportunity to work with individuals throughout the St. Louis Region. She has served as St. Louis County's Director of Transportation and Public Works, City of St. Louis Commissioner of Traffic, and both Area Engineer and Area Traffic Engineer for MoDOT. Through these varied lenses, she has become a strong supporter of the value of a multimodal approach to transportation planning. She is convinced that large projects like I-270 North, can accommodate vehicles and provide open access for bicyclists and pedestrians at the same time. She says it is both possible and necessary to ensure that all users and modes of transportation have space.

"It is difficult for a lot of people to imagine full multi-modal spaces for pedestrians and bicyclists, even though pedestrians are a huge part of our network. We have underinvested in this type of infrastructure for so long, but fortunately, we are now looking at the beginning stages of a mindset change," she said.

"People need spaces to walk, exercise, and bike, so that they can more fully experience and enjoy their communities," said Venker. Accommodations like trails, sidewalks and bike paths must be considered when we plan for modes of travel. What MoDOT did with this project, working to bring as many partners to the table as possible from industry, business, state, federal and local agencies and the community, has helped to ensure that the I-270 North Project was in position to both recognize and support that very critical goal."

[Lindbergh Time Lapse Camera](#)

[View Construction Alerts](#)

[In the News](#)

The new West Florissant bridge over I-270 opened to traffic on July 27, 2021. During the opening, we celebrated the first class of Project PAVE. Elected officials, members of the construction team and MoDOT were excited to celebrate these project milestones.



Governor Mike Parson visited the project for a ceremonial bill signing of SB 262, which will increase transportation funding in our state.

