



SCHOOL ZONE **SAFETY**

The I-270 North Project team reminds drivers to be extra vigilant as students begin returning to class. Motorists are urged to slow down and pay attention as more children will be on or near roadways, walking and bicycling to school or waiting for the bus—most for the first time in several months.

Here are some back to school safe driving reminders:

- **Buckle Up Phone Down!** These four words are never more important than during the school year. Looking away from the roadway to send a text message doubles the chance of being involved in a crash. Avoid using your cellphone or any other activity that might take attention away from the roadway. And set a good example for your young passengers by making sure everyone in the vehicle is buckled in.
- **Expect the unexpected!** When backing out of a driveway or leaving a garage, watch out for children walking or bicycling to school. Remember, children in groups or who are arriving late for the bus may dart into the street without looking for traffic.
- **Do not pass!** It is a state law that vehicles in both lanes must stop when a school bus has its red warning lights flashing and the stop sign is extended.
- **Slow down!** Watch for school zones where speed limits are reduced.

Source: <http://www.savemolives.com/>

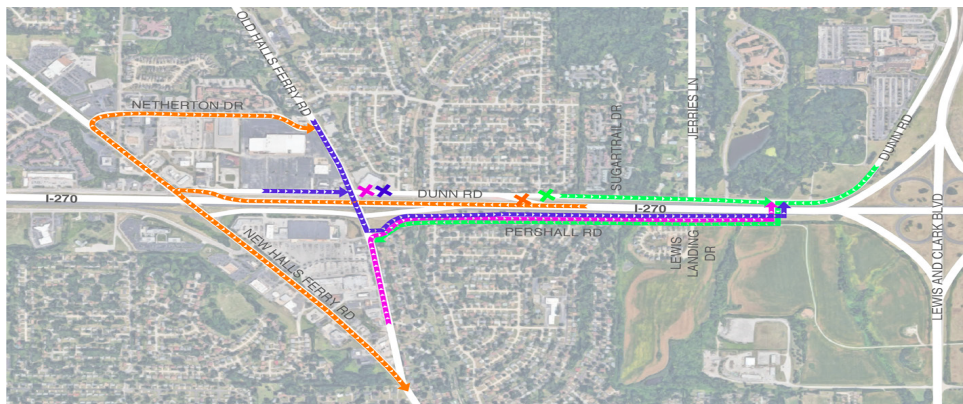
## I-270 to Hanley/Graham Ramp Closure

Starting at 6 a.m. Monday, October 11, crews will close the westbound I-270 exit ramp to Graham for 30 days. During the closure, travelers will use exit 28 to exit westbound I-270 to Washington/Elizabeth and travel westbound on Dunn Road to reach Hanley/Graham and continue to their destination. All detours will be signed.



## Dunn Road from Old Halls Ferry to Linnell Drive closed for 60 days

Drivers planning to exit westbound I-270 to Old Halls Ferry will continue on westbound I-270 to the New Halls Ferry exit and use New Halls Ferry Road to continue to their destination. The detour for the Dunn Road closure will use Pershall Road and the new Pershall bridge over I-270.



## Westbound lane of Pershall Road closed

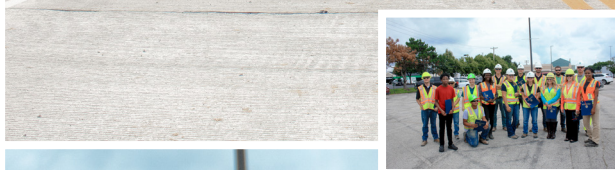
Drivers who use Pershall Road between West Florissant Avenue and Elizabeth Avenue are reminded that the westbound lane of Pershall between West Florissant and Knollstone Drive is closed. For nine months, only one eastbound lane will remain open to traffic while MoDOT begins converting this portion of Pershall to an eastbound one-way outer road.

Pershall from Elizabeth to Knollstone Drive will remain open to both eastbound and westbound traffic for several months during the first phase of construction. Signed detours will direct motorists from West Florissant to use Dunn to travel westbound.

Learn more about the I-270 North Project at [www.i270north.org](http://www.i270north.org)







**PROJECTPAVE**  
A MILLSTONE WEBER STEM INITIATIVE

## WANT TO LEARN MORE ABOUT STEM CAREER OPPORTUNITIES

**Project PAVE offers monthly training sessions, mentorships, internships, and financial literacy program options and experiences for its participants.**

We are looking to increase participation and opportunities in the construction industry for the next wave of promising young people via the 2021-22 Cohort of Project PAVE. Our future leaders must be bright, inquisitive, eager to learn and curious about construction and the related careers and opportunities the industry offers.

### Participating Schools/Districts:

- Ferguson-Florissant
- Hazelwood
- Riverview Gardens
- SSD – North County Tech
- North County Christian
- Maplewood – Richmond Heights
- Jennings
- Normandy

**High School students of all grades are encouraged to apply!**

Participants will receive real-world information from professionals working in the built environment.

### Project PAVE offers North County high school students:

- Monthly Virtual Saturday Sessions
- In-Person Hands-on Experiences
- Immersive learning involving the MoDOT I-270N Project
- Exploration of the heavy highway construction industry
- Introduction to civil design and engineering
- Dual-credit and dual-enrollment with St. Louis Community College – Florissant Valley
- Internships (Paid), Mentorships and Career Counseling
- Job Shadowing opportunities with industry experts and leaders
- Research and design of real time problem-solving robotics
- Employment options upon high school graduation

**To learn more about this exciting program visit our website at [millstoneweber.com/projectpave](http://millstoneweber.com/projectpave)**

**VIVIAN MARTAIN**  
Project PAVE Program Manager  
Vivian.martain@millstoneweber.com  
636.949.0038

# I-270 North Community Spotlight



## Flint Fowler, Ph.D.

President

Boys and Girls Clubs of Greater St. Louis

Flint Fowler, Ph.D., president of Boys and Girls Clubs of Greater St. Louis, says he hopes that the I-270 North Project will help stabilize communities, providing more kids with greater access to the supports and services offered by the Boys and Girls Clubs and other entities.

Fowler oversees operation of the Clubs, which provide youth services in 12 locations throughout the region. Currently, the Club operates several North County locations including the school districts of Hazelwood and Riverview Gardens and the Teen Center of Excellence in Ferguson. He also oversees the operations of both Mentor St. Louis and St. Louis Internship Program.

“We want to inspire and enable all young people, especially those who need us the most, to realize their full potential as productive, responsible and caring citizens. Our long-term interests focus on providing access to opportunities and exposure that help kids and teens prepare themselves and make better long-term decisions,” says Fowler.

When asked about the new Teen Center of Excellence in Ferguson, Fowler says it provides both an academic and safe space, giving kids who have no place to go a space to call their own.

“Young people need to know that someone cares about them and that success is within their reach. One of the greatest things about this location is that it sits in the middle of four school districts, so it can service many area kids who just need somewhere to be after school hours. This new investment of \$278 million could be huge in terms of improved access.”

Fowler says he has spent a lot of time driving in North County and the upgrades are long overdue. He added that North County has grown so rapidly, and he always felt that the highways were unsafe.

“Along with improved access and increased safety, I hope this new investment will cause a resurgence in north county; helping to stabilize neighborhoods and bring the many vacant strip malls back to life. I am excited about the possibilities.”

[Lindbergh Time Lapse Camera](#)

[View Construction Alerts](#)

[In the News](#)





PERSHALL BRIDGE OVER I-270 IS

**OPEN**