

From: [Debra M. Butchart](#)
To: [BR](#)
Subject: Bridge Advertisement (DSI 24-031) Min Stirrup Size For Encased Pile Cap Bents
Date: Friday, January 31, 2025 7:58:23 AM
Attachments: [image001.png](#)
[image002.png](#)

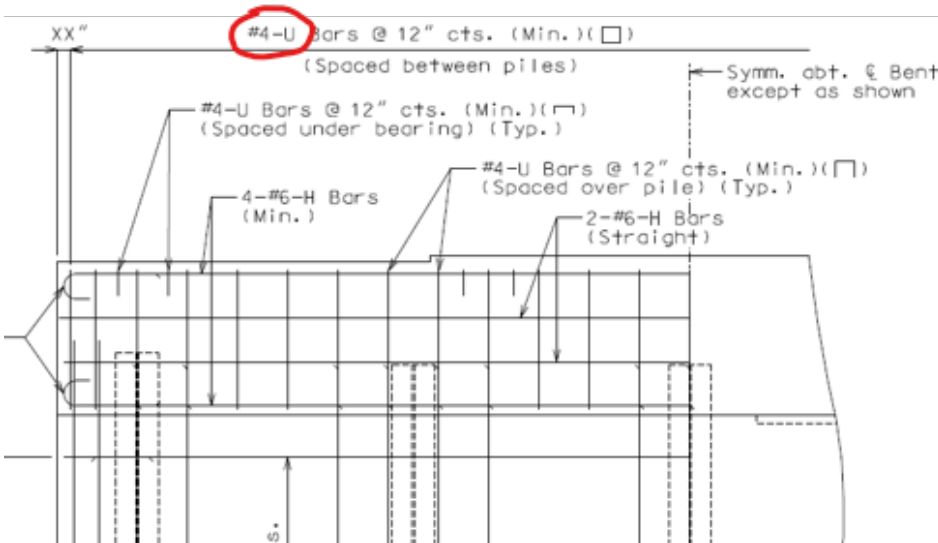
The EPG has been updated as described below:

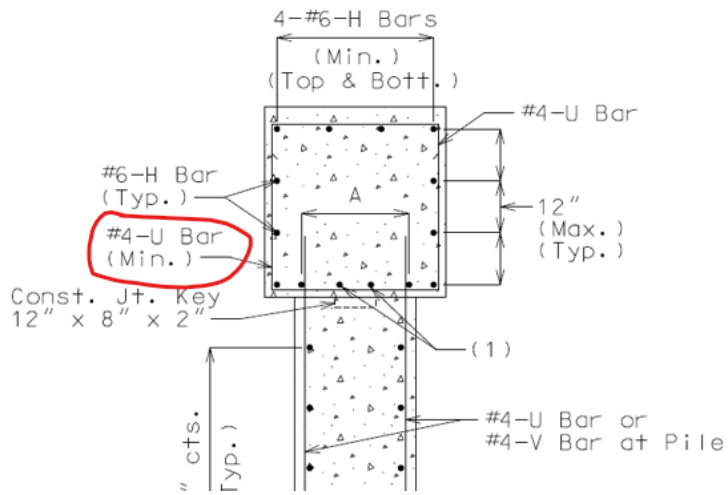
Implementation Statement: Effective immediately for design checks not started.

(The Implementation Statement is a recommendation by the Development Section. The SPM is responsible for the level of implementation for any particular job.)

Revision Date	Items Revised	Description of Change
Jan. 2025	EPG: 751.32.4.2	EPG 751.32.4.2 updated to allow #4 @ 12" (min.) stirrup bars in beam for encased pile cap bents.
	Bridge Standard Drawings: NA	
	MicroStation Cells: NA	
	Std. Specifications: NA	
	Standard Plans: NA	
	Bridge Special Provisions: NA	

Follow links above for more information (internal only).





Debra (Debbie) Butchart

(formerly Debra Beckwith)

Structural Specialist

Development Section

Bridge Division

MoDOT- 105 West Capitol Ave

573-522-8718