

Sign Spacing, Device Spacing and Channelizing Taper Lengths

SIGN SPACING (S) FOR ADVANCE SIGN SERIES (1) (2)		
SPEED MPH	UNDIVIDED HIGHWAYS	DIVIDED HIGHWAYS
0-35	200	200
40-45	350	500
50-55	500	1000
60-70	1000	SA-1000 SB-1500 SC-2640

TAPER LENGTHS AND SPACING OF CHANNELIZING DEVICES					
SPEED MPH	MINIMUM TAPER LENGTHS (L) FOR LANE WIDTHS (W)			MAXIMUM CHANNELIZER SPACING	
	10 FT	11 FT	12 FT	THROUGH TAPER	THROUGH WORK AREA
0-35	205	225	245	35	40
40-45	450	495	540	40	80
50-55	550	605	660	50	80
60-70	700	770	840	60	120

NOTES:

DIMENSIONS IN FEET UNLESS OTHERWISE NOTED.

(1) SPACING BETWEEN SIGNS AND SPACING BETWEEN LAST SIGN AND FLAGGER, BEGINNING OF TAPER, OR SIGNED CONDITION

(2) SPACINGS MAY BE ADJUSTED AS NECESSARY TO MEET FIELD CONDITIONS

LONGITUDINAL BUFFER SPACE (B)	
SPEED MPH	BUFFER SPACE
0-35	250
40-45	360
50-55	495
60-70	730

TAPER LENGTH (L):

L = WS FOR 40 MPH OR MORE

L = $\frac{WS^2}{60}$ FOR 35 MPH OR LESS

FOR SHOULDER TAPER USE L/3

WHERE:

L = TAPER LENGTH IN FEET

W = LATERAL SHIFT IN FEET

S = POSTED SPEED IN MPH

TRAFFIC CONTROL DEVICES

GENERAL NOTES:

- SEE STANDARD PLAN 616.10 FOR DETAILS AND ITEMS NOT SHOWN
- EXISTING SIGNS SHALL BE COVERED DURING WORKING HOURS ONLY IF IN CONFLICT WITH TRAFFIC CONTROL PLANS.
- NO DIRECT PAYMENT WILL BE MADE FOR RELOCATING, COVERING, UNCOVERING OR REMOVING SIGNS.
- CONES ALLOWABLE FOR DAYTIME OPERATIONS ONLY.
- LOCATE FLASHING ARROW PANEL AT BEGINNING OF TAPER WHEN FEASIBLE, ARROW PANELS ARE ALWAYS LOCATED BEHIND CHANNELIZERS OR CONES.

TRAFFIC CONTROL LEGEND

• SIGN (SINGLE SIDED)

◄ SIGN (DOUBLE SIDED)

△ FLAGGER

▲ DIRECTIONAL INDICATOR BARRICADE

■ CHANNELIZER

E BARRICADE

CHANGEABLE MESSAGE BOARD

TMA TRUCK MOUNTED ATTENUATOR
W/ FLASHING ARROW

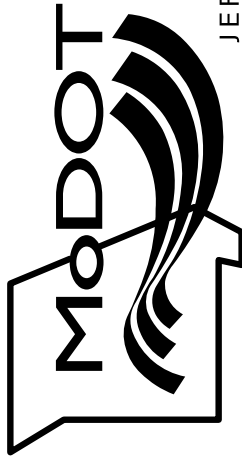
TEMPORARY TRAFFIC CONTROL

SHEET XX OF XX

DESCRIPTION

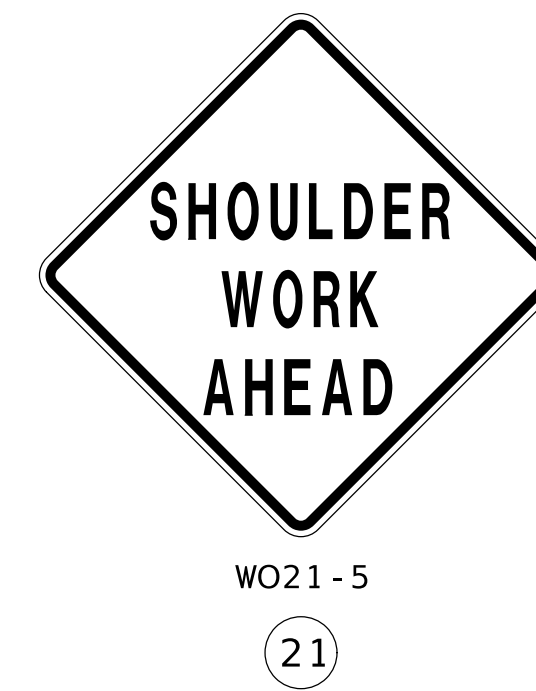
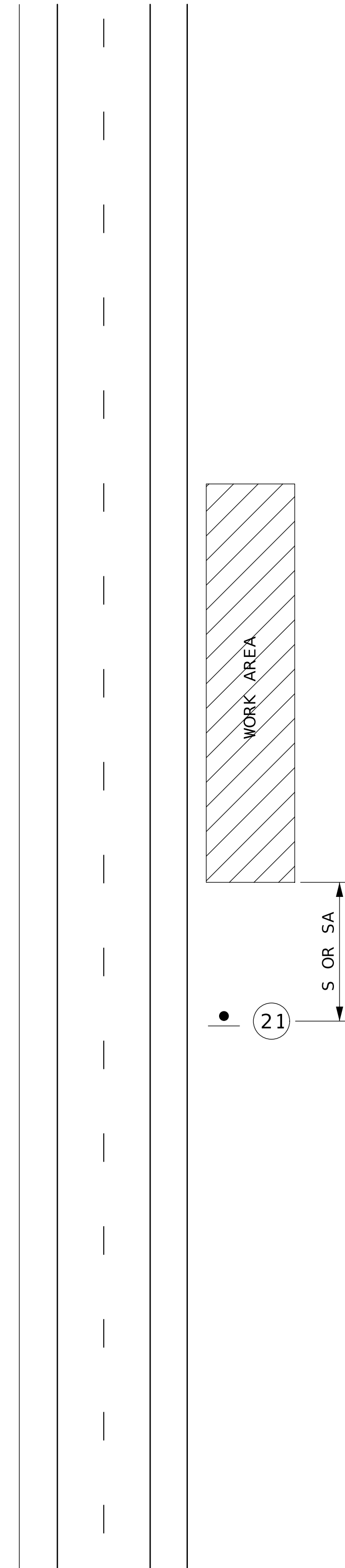
DATE

MISSOURI HIGHWAYS AND TRANSPORTATION
COMMISSION



105 WEST CAPITOL
JEFFERSON CITY, MO 65102
1-888-ASK-MODOT (1-888-275-6636)

NOT TO SCALE



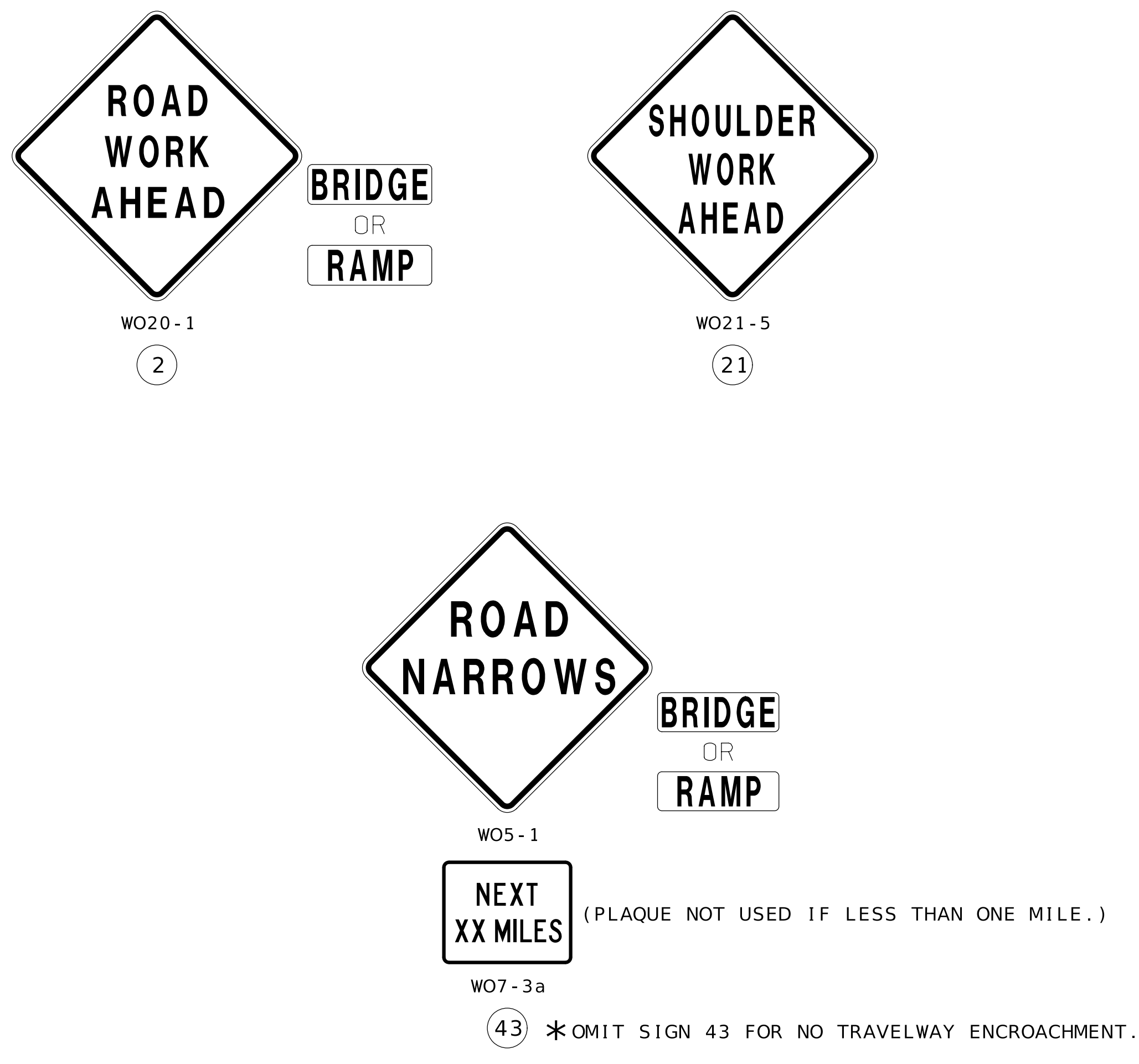
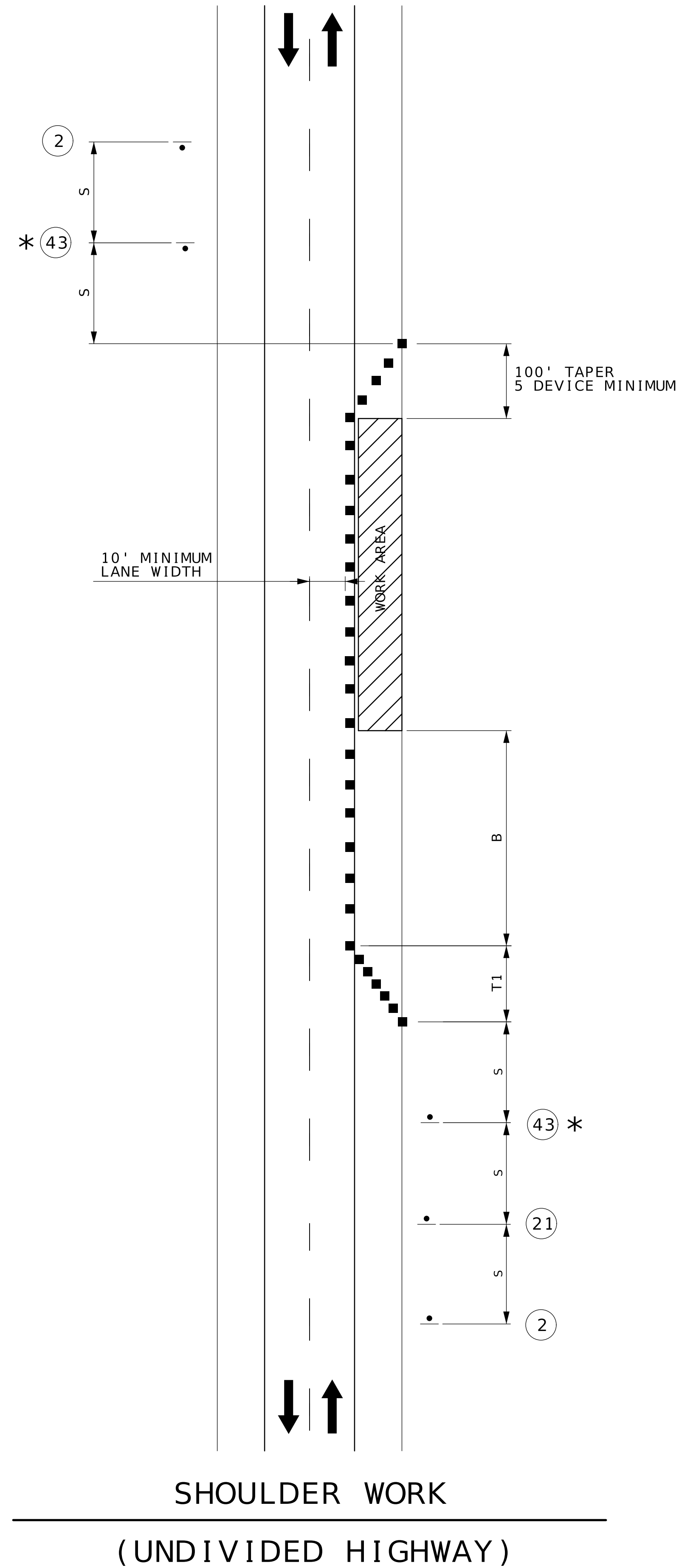
WORK BEYOND THE SHOULDER

(UNDIVIDED OR DIVIDED HIGHWAY)

TEMPORARY TRAFFIC CONTROL

SHEET XX OF XX

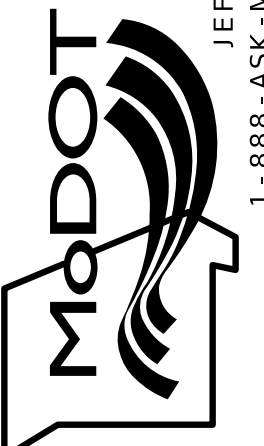
[illegible]

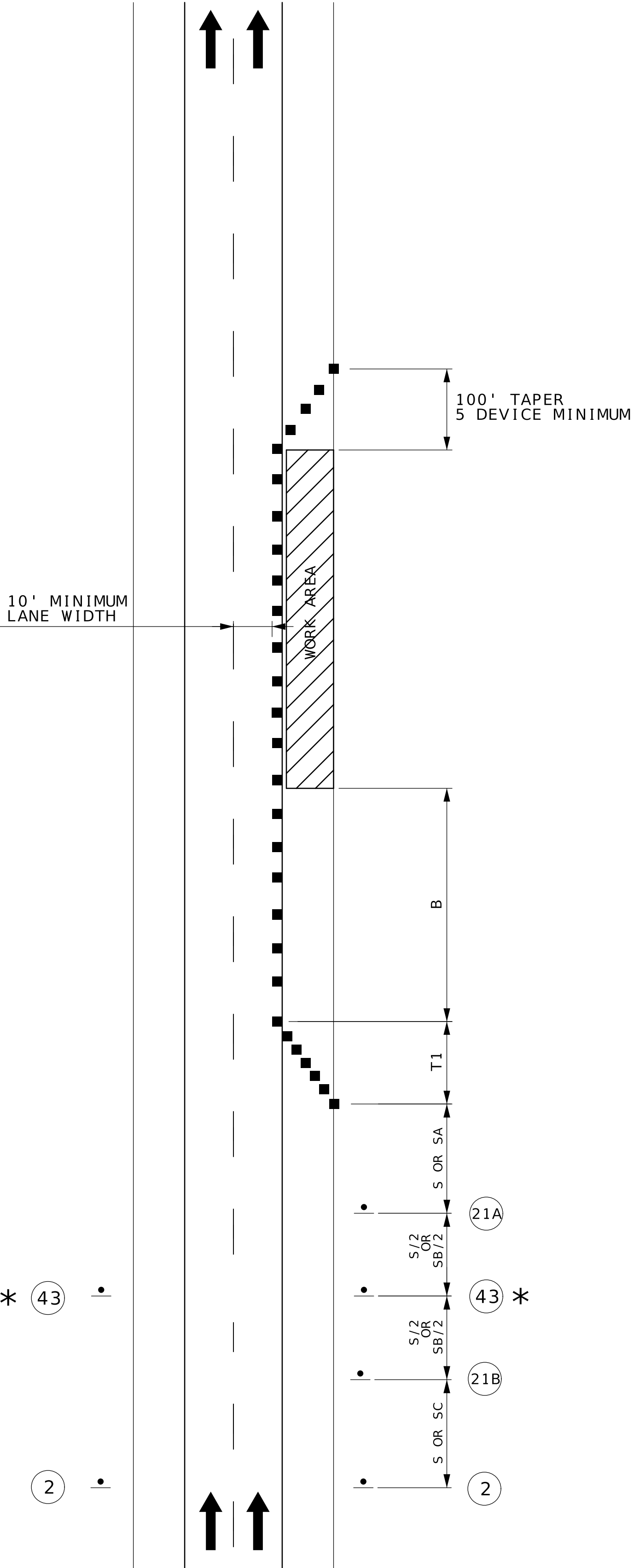


NOT TO SCALE

SHOULDER WORK
(UNDIVIDED HIGHWAY)

TEMPORARY TRAFFIC CONTROL
SHEET XX OF XX

DATE PREPARED 5/6/2024	
ROUTE	STATE MO
DISTRICT	SHEET NO.
COUNTY	
JOB NO.	
CONTRACT ID.	
PROJECT NO.	
BRIDGE NO.	
DESCRIPTION	
DATE	
MISSOURI HIGHWAYS AND TRANSPORTATION COMMISSION	
	
105 WEST CAPITOL JEFFERSON CITY, MO 65102 1-888-ASK-MODOT (1-888-275-6636)	



W020-1
2

BRIDGE
OR
RAMP



W021-5bR
21B



W021-5aR
21A



W05-1

BRIDGE
OR
RAMP



W07-3a

(PLAQUE NOT USED IF LESS THAN ONE MILE.)

43

* OMIT SIGN 43 FOR NO TRAVELWAY ENCROACHMENT.

NOT TO SCALE

DATE PREPARED 5/6/2024	
ROUTE	STATE MO
DISTRICT	SHEET NO.
COUNTY	
JOB NO.	
CONTRACT ID.	
PROJECT NO.	
BRIDGE NO.	

DESCRIPTION	DATE

MISSOURI HIGHWAYS AND TRANSPORTATION COMMISSION

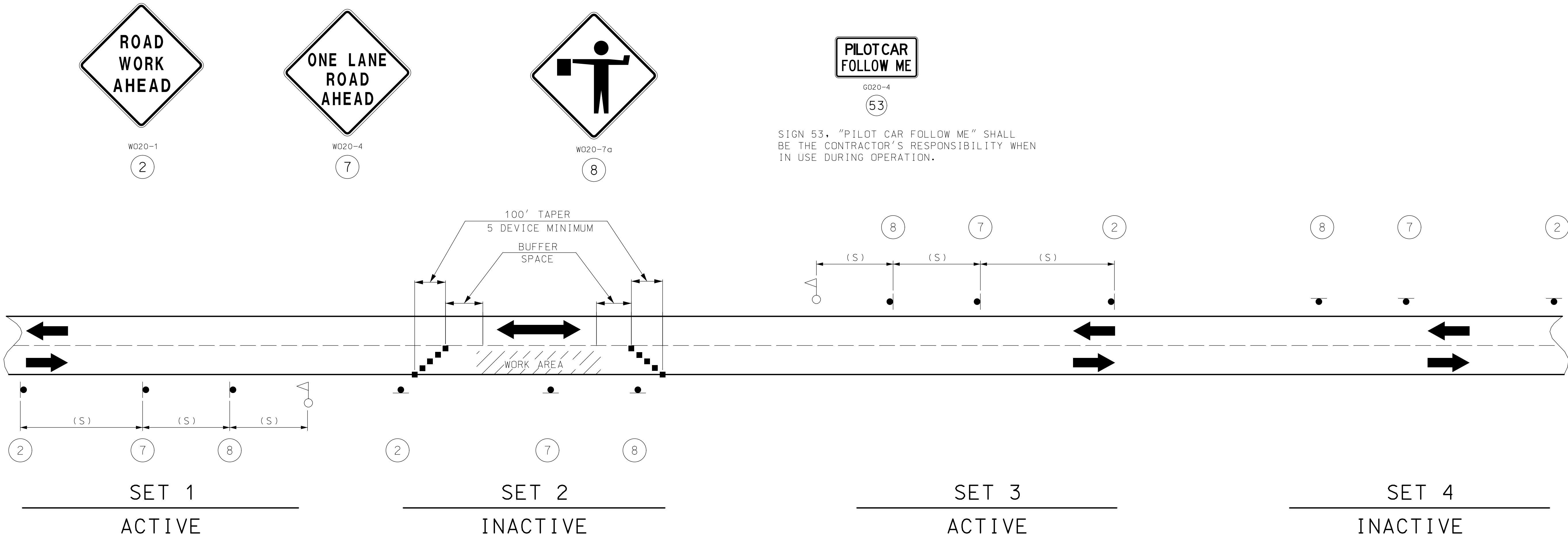
105 WEST CAPITOL
JEFFERSON CITY, MO 65102
1-888-ASK-MODOT (1-888-275-6636)

SHOULDER WORK
(DIVIDED HIGHWAY)

TEMPORARY TRAFFIC CONTROL

SHEET XX OF XX

NOT TO SCALE



NOTES:

DAYLIGHT FLAGGING OPERATIONS ONLY.

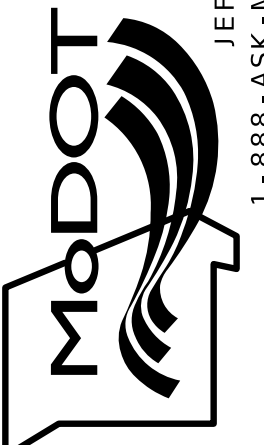
CHANNELIZING DEVICES LOCATED DOWNSTREAM OF THE ONE-LANE, TWO-WAY TAPER ARE OPTIONAL. THESE DEVICES SHOULD BE ELIMINATED WHEN THEIR USE WILL REDUCE THE USABLE LANE WIDTH, INCLUDING ANY ACCEPTABLE SHOULDERS, TO LESS THAN 10' OR WILL SIGNIFICANTLY AFFECT THE RESURFACING OPERATION.

SIGN SETS 1 AND 3 ARE ACTIVE AND (I.E., SIGNS FACE ONCOMING TRAFFIC) SIGN SETS 2 AND 4 ARE INACTIVE (I.E., SIGNS DO NOT FACE EITHER DIRECTION OF TRAFFIC) WHEN THE RESURFACING OPERATION IS LOCATED BETWEEN SIGN SETS 1 AND 3.

WHEN SIGN SETS 2 AND 4 ARE ACTIVE, SIGN SETS 1 AND 3 BECOME INACTIVE AND ARE ADVANCED TO BECOME SETS 2 AND 4 WITH SIGN LEGENDS TURNED AWAY FROM BOTH DIRECTIONS OF TRAFFIC. WHEN THE RESURFACING OPERATION ADVANCES TO BETWEEN SIGN SETS 2 AND 4, SIGN SETS 2 AND 4 BECOME ACTIVE (I.E., NEW SIGN SETS 1 AND 3) AND SIGN SETS 1 AND 3 ADVANCED IN THE DIRECTION OF THE OPERATION (I.E., NEW SIGN SETS 2 AND 4).

■ - CHANNELIZERS

○ - FLAGGER

DATE PREPARED 5/6/2024	
ROUTE	STATE MO
DISTRICT	SHEET NO.
COUNTY	
JOB NO.	
CONTRACT ID.	
PROJECT NO.	
BRIDGE NO.	
DESCRIPTION	
DATE	
MISSOURI HIGHWAYS AND TRANSPORTATION COMMISSION	
	
105 WEST CAPITOL JEFFERSON CITY, MO 65102 1-888-ASK-MODOT (1-888-275-6636)	

NOT TO SCALE

NOTES :

UPON APPROVAL OF THE ENGINEER, THE CONTRACTOR MAY PROVIDE ADDITIONAL PROTECTIVE TRUCKS EQUIPPED WITH PROPER WARNING DEVICES.

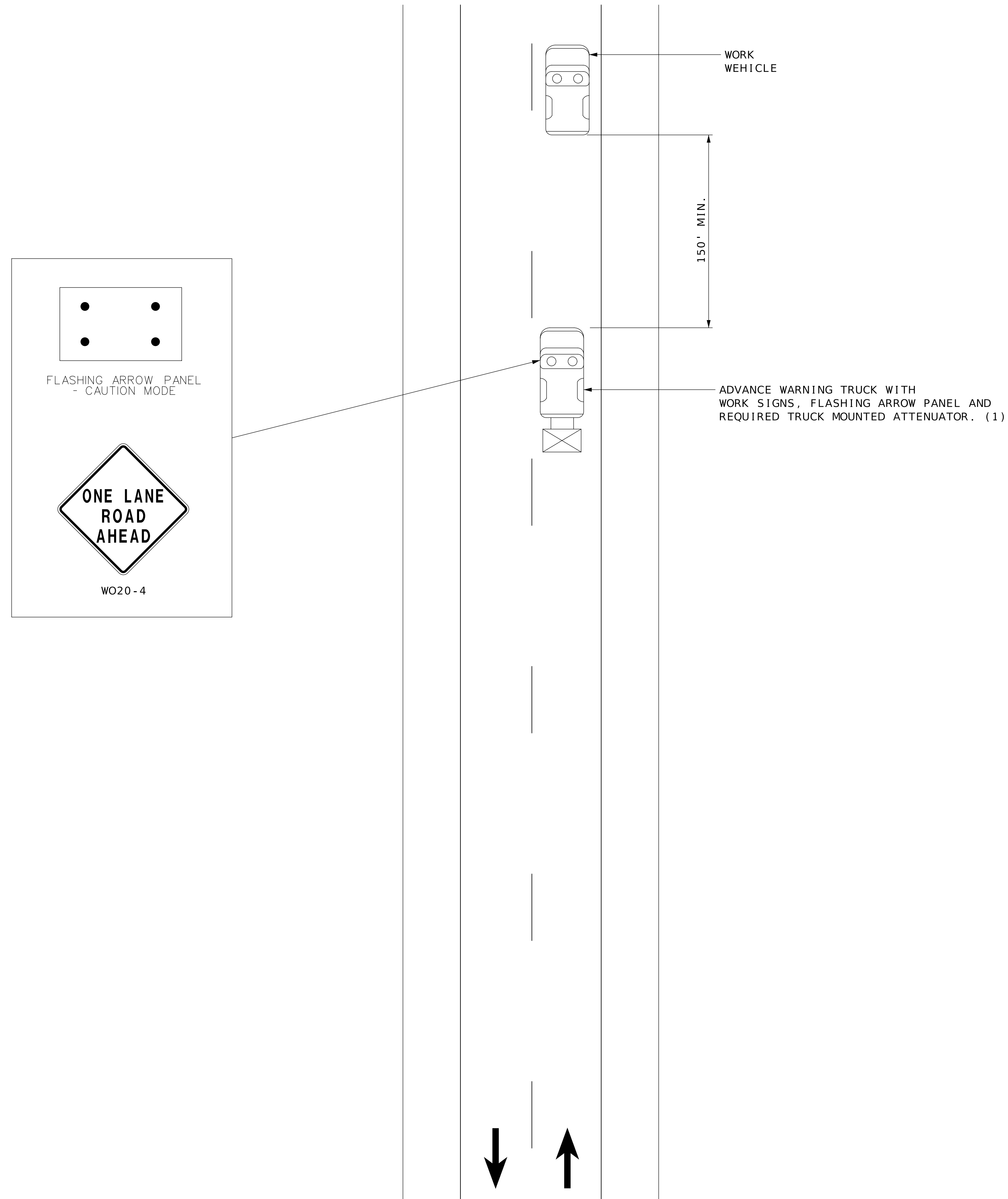
PROTECTIVE TRUCKS AND WORK VEHICLES SHALL DISPLAY HIGH-INTENSITY ROTATING, FLASHING, OSCILLATING, OR STROBE LIGHTS.

VEHICLE HAZARD WARNING SIGNALS SHALL NOT BE USED INSTEAD OF THE VEHICLE'S HIGH-INTENSITY ROTATING, FLASHING, OSCILLATING, OR STROBE LIGHTS.

VEHICLE-MOUNTED SIGNS SHALL BE MOUNTED IN A MANNER SUCH THAT THEY ARE NOT OBSCURED BY EQUIPMENT OR SUPPLIES. SIGN LEGENDS ON VEHICLE-MOUNTED SIGNS SHALL BE COVERED OR TURNED FROM VIEW WHEN WORK IS NOT IN PROGRESS.


FLASHING ARROW PANELS SHALL BE INCIDENTAL TO TRUCK MOUNTED
ATTENUATORS, WHEREVER USED. NO ADDITIONAL PAYMENT WILL BE MADE.

(1) ADVANCE WARNING TRUCK IS POSITIONED AT VERTICAL OR HORIZONTAL CURVES THAT RESTRICT SIGHT DISTANCE OR SPACING SHOWN, WHICHEVER IS GREATER.



MOBILE ON TWO-LANE HIGHWAY

TEMPORARY TRAFFIC CONTROL
MOBILE ON TWO-LANE HIGHWAY
SHEET XX OF XX

		DATE PREPARED 2/5/2024	
		ROUTE	STATE MO
		DISTRICT	SHEET NO.
		COUNTY	
		JOB NO.	
		CONTRACT ID.	
		PROJECT NO.	
		BRIDGE NO.	
MISSOURI HIGHWAYS AND TRANSPORTATION COMMISSION		DATE	DESCRIPTION
		105 WEST CAPITOL JEFFERSON CITY, MO 65102 1-888-ASK-MODOT (1-888-275-6636)	

NOT TO SCALE

NOTES :

UPON APPROVAL OF THE ENGINEER, THE CONTRACTOR MAY PROVIDE ADDITIONAL PROTECTIVE TRUCKS EQUIPPED WITH PROPER WARNING DEVICES.

PROTECTIVE TRUCKS AND WORK VEHICLES SHALL DISPLAY HIGH-INTENSITY ROTATING, FLASHING, OSCILLATING, OR STROBE LIGHTS.

VEHICLE HAZARD WARNING SIGNALS SHALL NOT BE USED INSTEAD OF THE VEHICLE'S HIGH-INTENSITY ROTATING, FLASHING, OSCILLATING, OR STROBE LIGHTS.

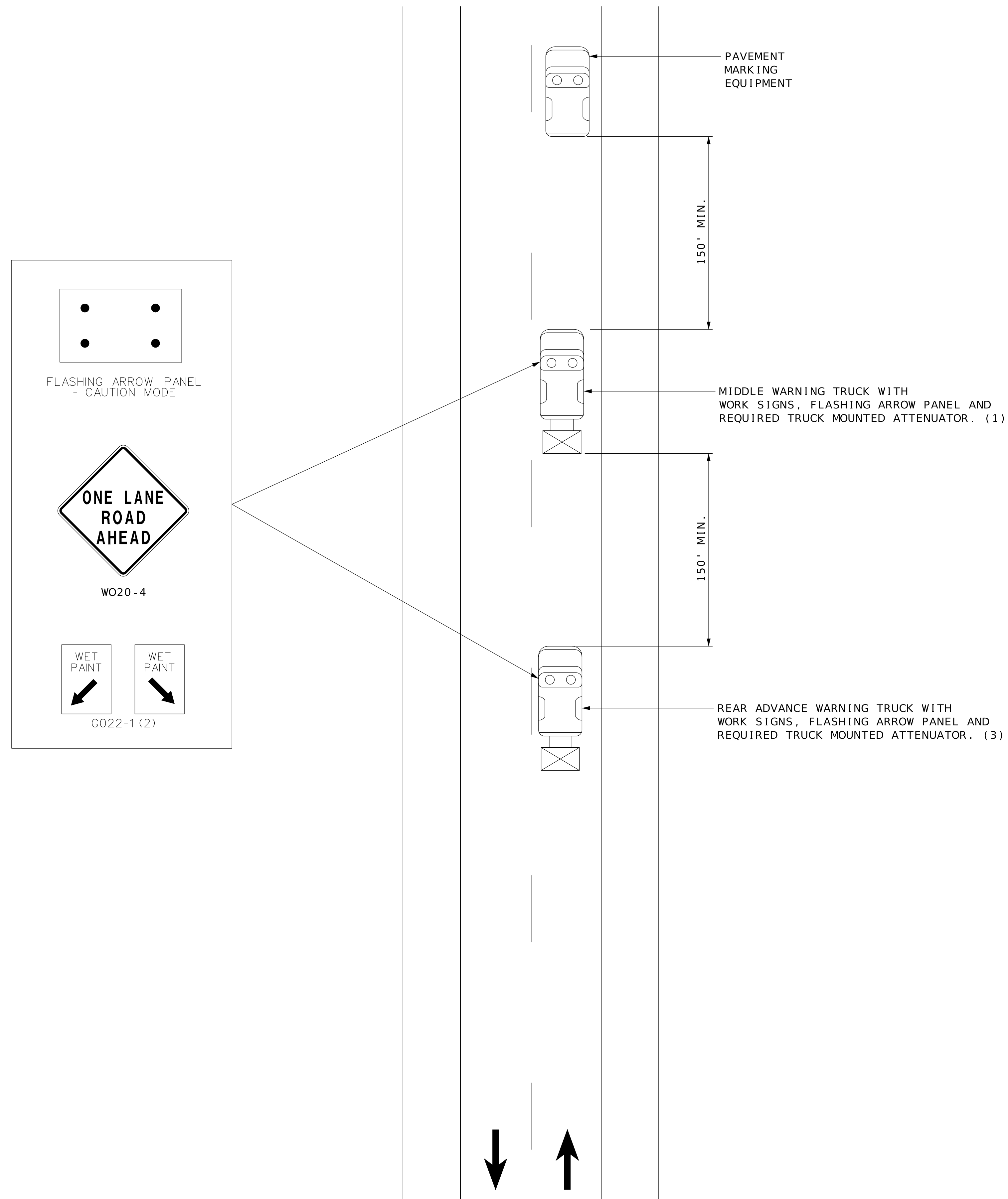
VEHICLE-MOUNTED SIGNS SHALL BE MOUNTED IN A MANNER SUCH THAT THEY ARE NOT OBSCURED BY EQUIPMENT OR SUPPLIES. SIGN LEGENDS ON VEHICLE-MOUNTED SIGNS SHALL BE COVERED OR TURNED FROM VIEW WHEN WORK IS NOT IN PROGRESS.

FLASHING ARROW PANELS SHALL BE INCIDENTAL TO TRUCK MOUNTED
ATTENUATORS, WHEREVER USED. NO ADDITIONAL PAYMENT WILL BE MADE.

(1) TRUCK IS OPTIONAL ON TWO-LANE UNDIVIDED HIGHWAYS IF SIGNING AND ARROW BOARD ARE MOUNTED ON THE PAVEMENT MARKING EQUIPMENT.

(2) WET PAINT SIGNS ARE INSTALLED TO INDICATE THE SIDE IN WHICH THE PAVEMENT MARKING MATERIAL IS BEING APPLIED. AT THE CONTRACTOR'S OPTION, A FRONT FACING WET PAINT SIGN MAY BE INSTALLED ON THE LEFT SIDE OF THE PAVEMENT MARKING EQUIPMENT.

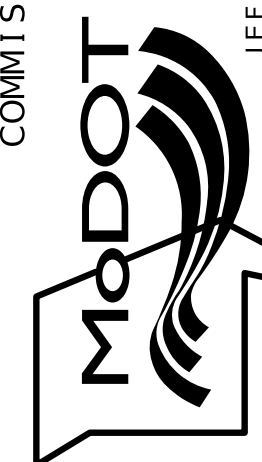
(3) REAR WARNING TRUCK IS POSITIONED AT THE NO TRACK POINT OF THE PAVEMENT MARKING MATERIAL, OR VERTICAL OR HORIZONTAL CURVES THAT RESTRICT SIGHT DISTANCE, OR SPACING SHOWN, WHICHEVER IS GREATER.



STRIPING ON TWO-LANE HIGHWAY

TEMPORARY TRAFFIC CONTROL
STRIPING ON TWO-LANE HIGHWAY
SHEET XX OF XX

DATE PREPARED	
2/5/2024	
ROUTE	STATE
	MO
DISTRICT	SHEET NO.
COUNTY	
JOB NO.	
CONTRACT ID.	
PROJECT NO.	
BRIDGE NO.	

[illegible]MISSOURI HIGHWAYS AND TRANSPORTATION
COMMISSION

105 WEST CAPITOL
JEFFERSON CITY, MO 65102
1-888-ASK-MODOT (1-888-275-6636)

NOT TO SCALE

NOTES:

UPON APPROVAL OF THE ENGINEER, THE CONTRACTOR MAY PROVIDE ADDITIONAL PROTECTIVE TRUCKS EQUIPPED WITH PROPER WARNING DEVICES.

PROTECTIVE TRUCKS AND WORK VEHICLES SHALL DISPLAY HIGH-INTENSITY ROTATING, FLASHING, OSCILLATING, OR STROBE LIGHTS.

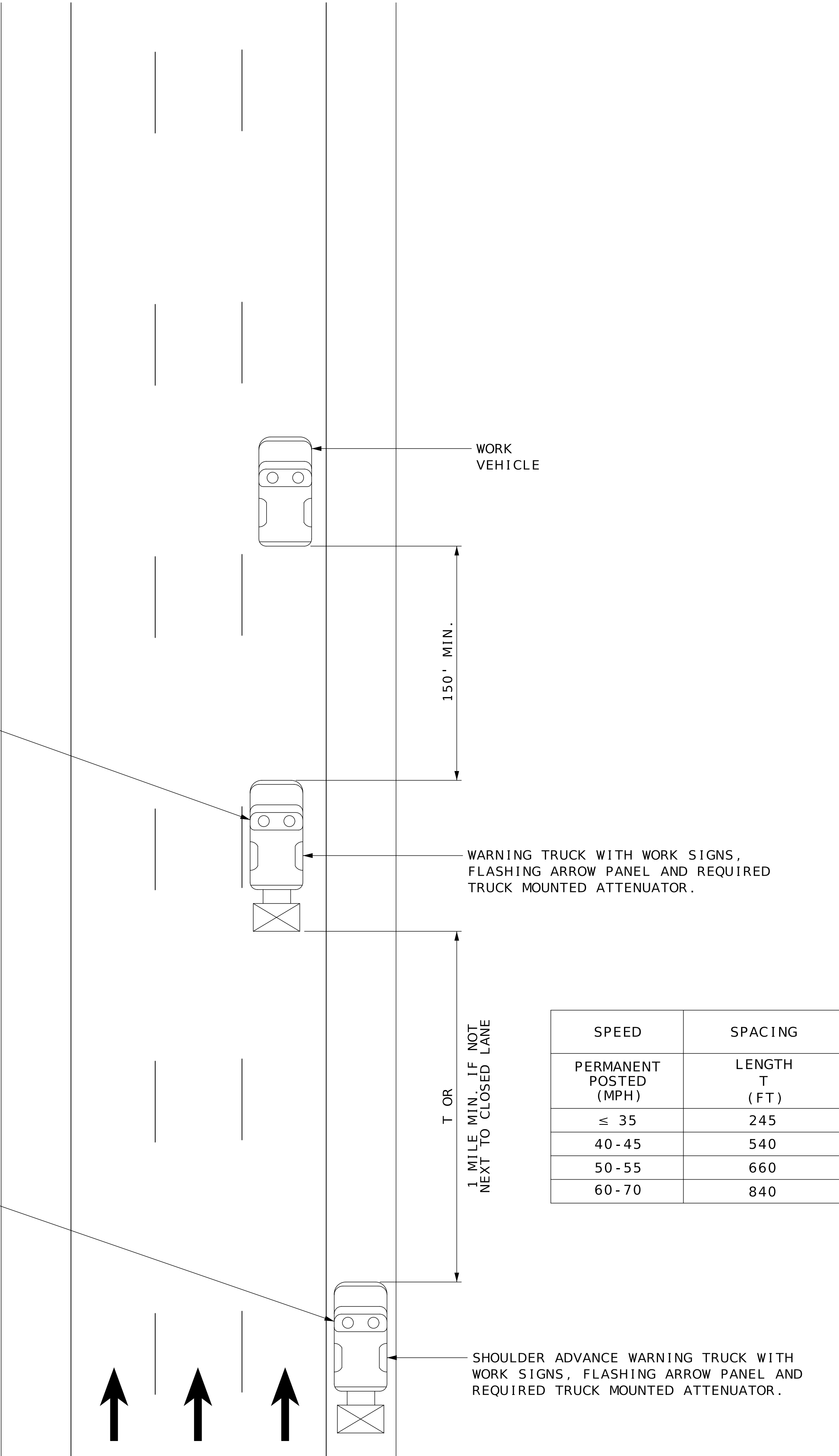
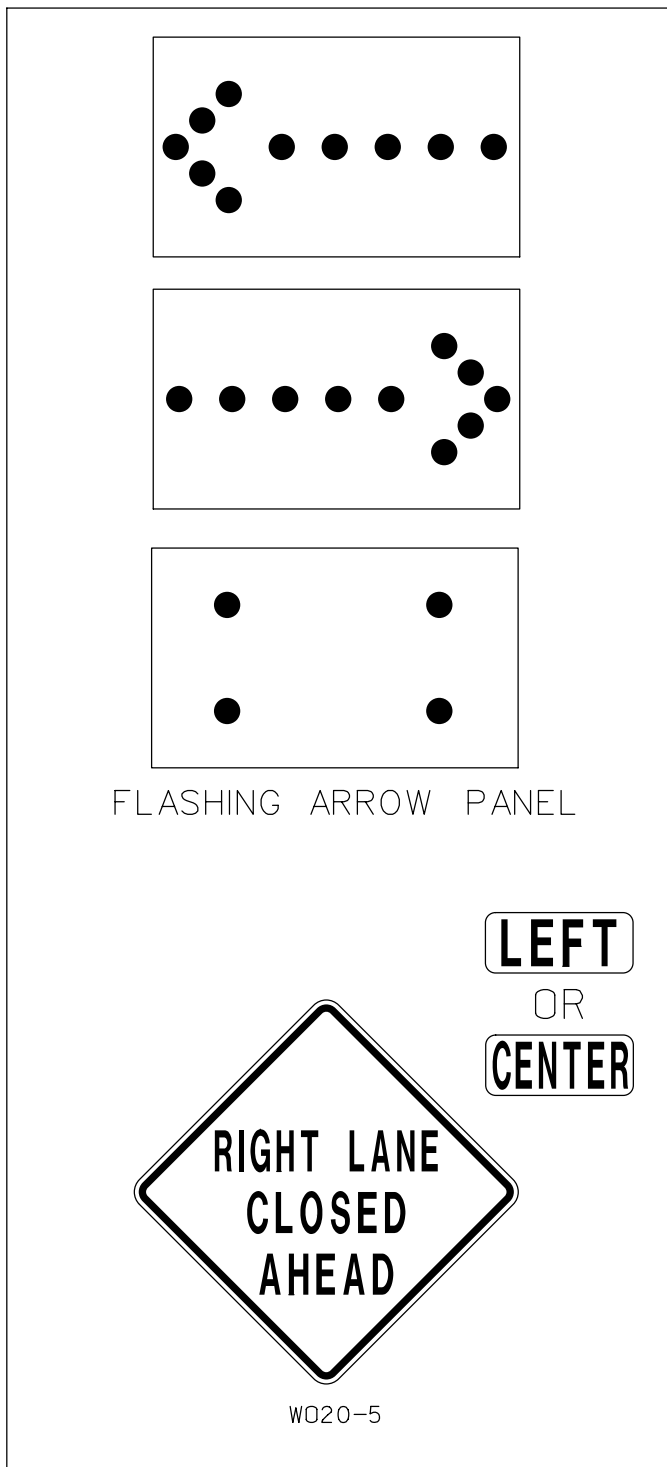
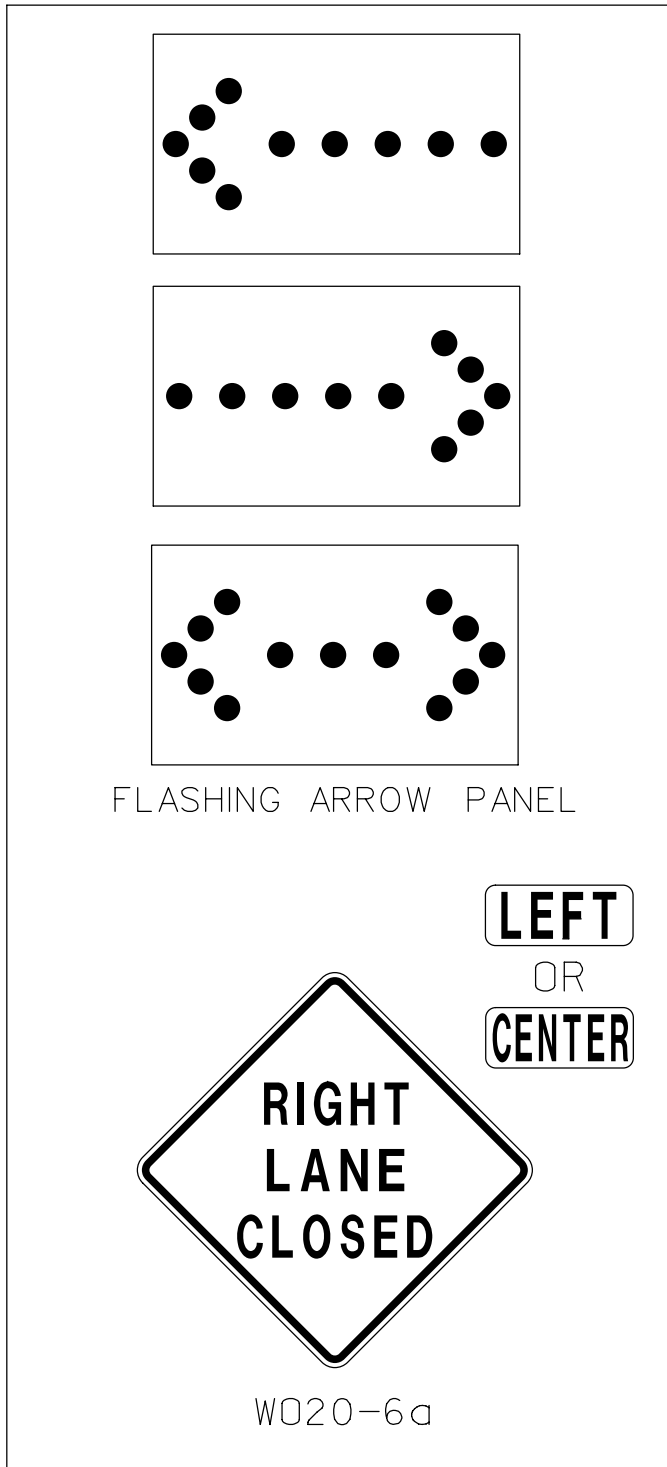
VEHICLE HAZARD WARNING SIGNALS SHALL NOT BE USED INSTEAD OF THE VEHICLE'S HIGH-INTENSITY ROTATING, FLASHING, OSCILLATING, OR STROBE LIGHTS.

VEHICLE-MOUNTED SIGNS SHALL BE MOUNTED IN A MANNER SUCH THAT THEY ARE NOT OBSCURED BY EQUIPMENT OR SUPPLIES. SIGN LEGENDS ON VEHICLE-MOUNTED SIGNS SHALL BE COVERED OR TURNED FROM VIEW WHEN WORK IS NOT IN PROGRESS.

FLASHING ARROW PANELS SHALL BE INCIDENTAL TO TRUCK MOUNTED ATTENUATORS, WHEREVER USED. NO ADDITIONAL PAYMENT WILL BE MADE.

FLASHING ARROW PANELS SHALL, AS A MINIMUM, BE TYPE B, WITH A SIZE OF 60 X 30 INCHES.

A FLASHING ARROW BOARD SHALL BE USED WHEN A FREEWAY LANE IS CLOSED. WHEN MORE THAN ONE LANE CLOSED, A SEPARATE FLASHING ARROW BOARD SHALL BE USED FOR EACH CLOSED LANE.



SPEED	SPACING
PERMANENT POSTED (MPH)	LENGTH T (FT)
≤ 35	245
40 - 45	540
50 - 55	660
60 - 70	840

MOBILE ON MULTI-LANE HIGHWAY

DESCRIPTION	DATE

MISSOURI HIGHWAYS AND TRANSPORTATION COMMISSION

MoDOT

105 WEST CAPITOL
JEFFERSON CITY, MO 65102
1-888-ASK-MODOT (1-888-275-6636)

FLASHING ARROW PANEL

LEFT

OR

CENTER

RIGHT LANE CLOSED

W020-6a

WET PAINT

WET PAINT

G022-1 (1)

FLASHING ARROW PANEL

LEFT

OR

CENTER

RIGHT LANE CLOSED AHEAD

W020-5

STRIPING ON MULTI-LANE HIGHWAY

PAVEMENT MARKING EQUIPMENT

150' MIN.

WARNING TRUCK WITH WORK SIGNS, FLASHING ARROW PANEL AND REQUIRED TRUCK MOUNTED ATTENUATOR.

150' MIN.

WARNING TRUCK WITH WORK SIGNS, FLASHING ARROW PANEL AND REQUIRED TRUCK MOUNTED ATTENUATOR. (2)

T OR 1 MILE MIN. IF NOT NEXT TO CLOSED LANE

SHOULDER ADVANCE WARNING TRUCK WITH WORK SIGNS, FLASHING ARROW PANEL AND REQUIRED TRUCK MOUNTED ATTENUATOR.

SPEED	SPACING
PERMANENT POSTED (MPH)	LENGTH T (FT)
≤ 35	245
40 - 45	540
50 - 55	660
60 - 70	840

NOT TO SCALE

NOTES:

UPON APPROVAL OF THE ENGINEER, THE CONTRACTOR MAY PROVIDE ADDITIONAL PROTECTIVE TRUCKS EQUIPPED WITH PROPER WARNING DEVICES.

PROTECTIVE TRUCKS AND WORK VEHICLES SHALL DISPLAY HIGH-INTENSITY ROTATING, FLASHING, OSCILLATING, OR STROBE LIGHTS.

VEHICLE HAZARD WARNING SIGNALS SHALL NOT BE USED INSTEAD OF THE VEHICLE'S HIGH-INTENSITY ROTATING, FLASHING, OSCILLATING, OR STROBE LIGHTS.

VEHICLE-MOUNTED SIGNS SHALL BE MOUNTED IN A MANNER SUCH THAT THEY ARE NOT OBSCURED BY EQUIPMENT OR SUPPLIES. SIGN LEGENDS ON VEHICLE-MOUNTED SIGNS SHALL BE COVERED OR TURNED FROM VIEW WHEN WORK IS NOT IN PROGRESS.

FLASHING ARROW PANELS SHALL BE INCIDENTAL TO TRUCK MOUNTED ATTENUATORS, WHEREVER USED. NO ADDITIONAL PAYMENT WILL BE MADE.

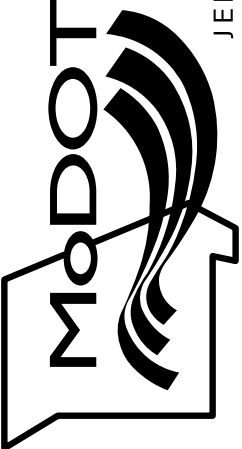
FLASHING ARROW PANELS SHALL, AS A MINIMUM, BE TYPE B, WITH A SIZE OF 60 X 30 INCHES.

A FLASHING ARROW BOARD SHALL BE USED WHEN A FREEWAY LANE IS CLOSED. WHEN MORE THAN ONE LANE CLOSED, A SEPARATE FLASHING ARROW BOARD SHALL BE USED FOR EACH CLOSED LANE.

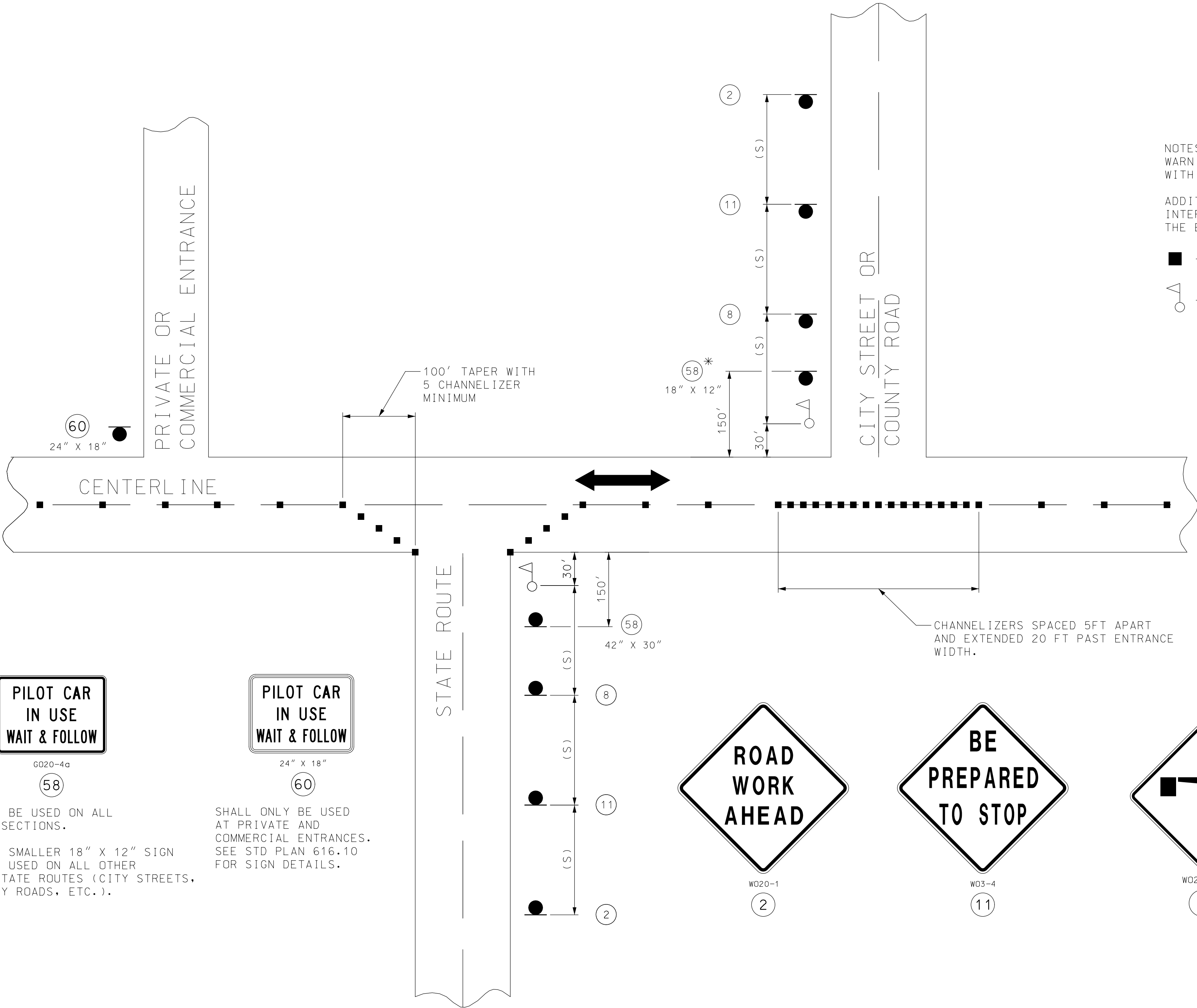
(1) WET PAINT SIGNS ARE INSTALLED TO INDICATE THE SIDE IN WHICH THE PAVEMENT MARKING MATERIAL IS BEING APPLIED. AT THE CONTRACTOR'S OPTION, A FRONT FACING WET PAINT SIGN MAY BE INSTALLED ON THE LEFT SIDE OF THE PAVEMENT MARKING EQUIPMENT.

(2) WARNING TRUCK IS POSITIONED AT THE NO TRACK POINT OF THE PAVEMENT MARKING MATERIAL, OR SPACING SHOWN, WHICH EVER IS GREATER.

TEMPORARY TRAFFIC CONTROL
STRIPING ON MULTI-LANE HIGHWAY
SHEET XX OF XX

DATE PREPARED 2/5/2024	
ROUTE	STATE MO
DISTRICT	SHEET NO.
COUNTY	
JOB NO.	
CONTRACT ID.	
PROJECT NO.	
BRIDGE NO.	
DESCRIPTION	
DATE	
MISSOURI HIGHWAYS AND TRANSPORTATION COMMISSION	
	
105 WEST CAPITOL JEFFERSON CITY, MO 65102 1-888-ASK-MODOT (1-888-275-6636)	

NOT TO SCALE



NOTES:
WARNING SIGNS SHALL BE ERECTED AT EACH INTERSECTION WITH ANOTHER STATE HIGHWAY WITHIN THE WORK ZONE.

ADDITIONAL WARNING SIGNS SHALL BE ERECTED AT OTHER INTERSECTIONS WITHIN THE WORK ZONE, AS DIRECTED BY THE ENGINEER.

■ - CHANNELIZERS (AS SPECIFIED)

△ - FLAGGER

SHALL BE USED ON ALL INTERSECTIONS.

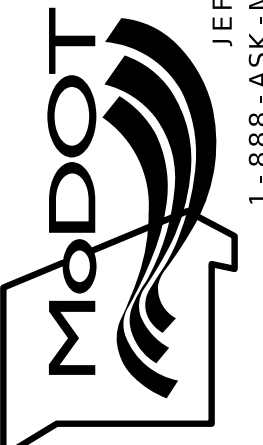
* THE SMALLER 18" X 12" SIGN 58 IS USED ON ALL OTHER NON-STATE ROUTES (CITY STREETS, COUNTY ROADS, ETC.).

SHALL ONLY BE USED AT PRIVATE AND COMMERCIAL ENTRANCES. SEE STD PLAN 616.10 FOR SIGN DETAILS.

SIDE ROADS ENTERING WORK ZONES

TEMPORARY TRAFFIC CONTROL

SHEET XX OF XX

DATE PREPARED	
5/6/2024	
ROUTE	STATE
	MO
DISTRICT	SHEET NO.
COUNTY	
JOB NO.	
CONTRACT ID.	
PROJECT NO.	
BRIDGE NO.	
DESCRIPTION	
DATE	
MISSOURI HIGHWAYS AND TRANSPORTATION COMMISSION	
	
105 WEST CAPITOL JEFFERSON CITY, MO 65102 1-888-ASK-MODOT (1-888-275-6636)	