

Welcome!

Jefferson County

Route 30

Safety Improvements

Open House



SAFETY
IMPROVEMENTS PROJECT
A LIFESAVING PARTNERSHIP



SAINT LOUIS COUNTY
Transportation and Public Works

Jefferson County Route 30 Improvements

Intersection Conflict Warning System (ICWS)

Alerts drivers with flashing lights on a “Cross Traffic Ahead” sign to inform drivers of a car approaching the intersection from a side street.



Flashing Beacon on Advance Warning Signs

Adds flashing lights onto existing advanced warning signs for added visibility of the sign.



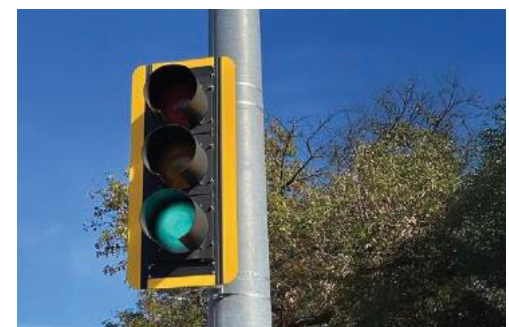
Guardrail

Absorbs the impact and guide the car back onto the road and prevent vehicles from veering off the roadway or hitting permanent objects (i.e. signal post, light pole)



Retroreflective Backplates

Increases visibility of signals by adding retroreflective yellow border



Stop Sign with Flashing LEDs

Increases visibility of stop sign by incorporating LED lights



SAINT LOUIS COUNTY
Transportation and Public Works

Jefferson County Route 30 Improvements

Chevrons and Curve
Warning Signs

Increases visibility of roadway
curves to help drivers
navigate the curve safely



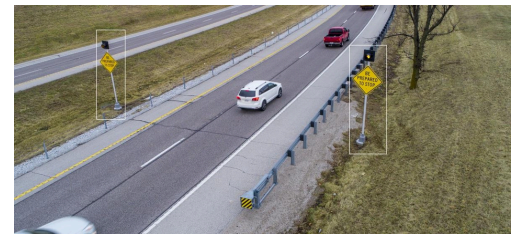
Curve Warning
Pavement Markings

Alerts drivers to slow down
for the curve ahead.



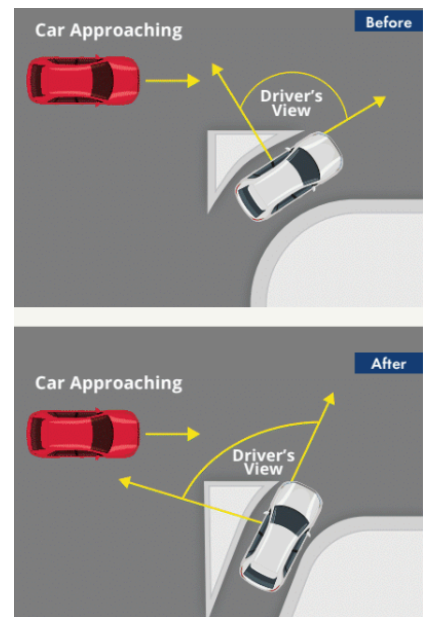
Dynamic Signal Warning
Flashers (DSWF)

Alerts drivers with flashing lights
on a “Be Prepared to Stop” sign
for the traffic signal ahead.



Modified Right Turns

Improves driver-side visibility
and discourages high-speed
right turns at an intersection by
straightening the curve



SAINT LOUIS COUNTY
Transportation and Public Works

Lane Narrowing

Reduces lane width by widening the centerline pavement marking to encourage drivers to slow down along the curve.

This safety improvement is new to the Jefferson County area.



From 2016-2020, there were 56 crashes on Route 30 in Jefferson County, from 0.5 miles east of Dittmer Ridge Road to Diehl Road.