

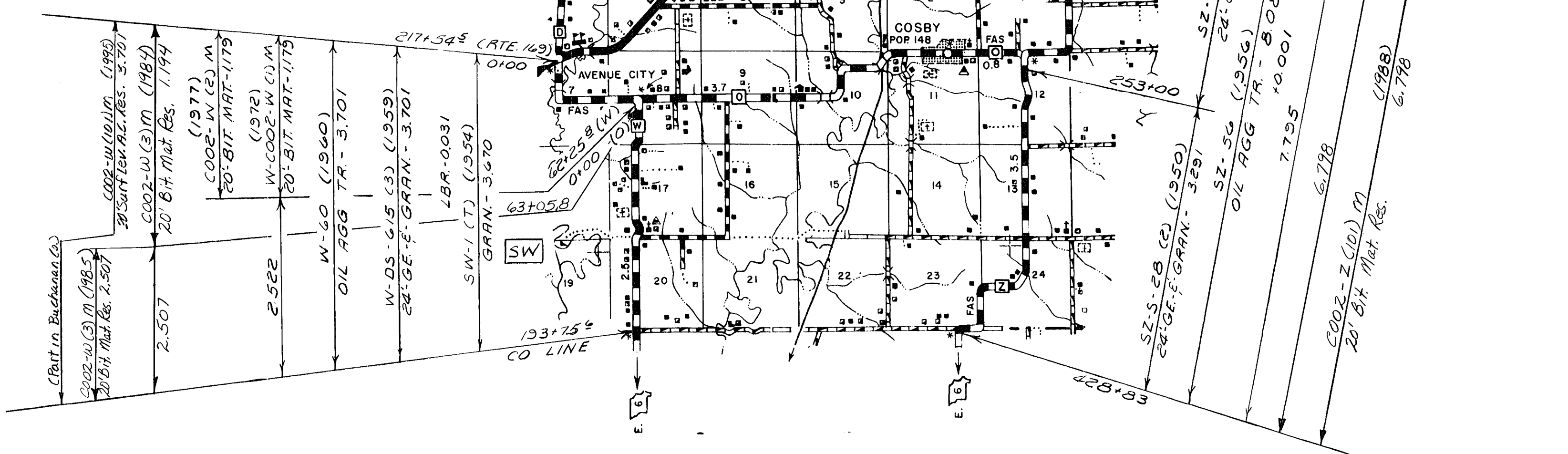
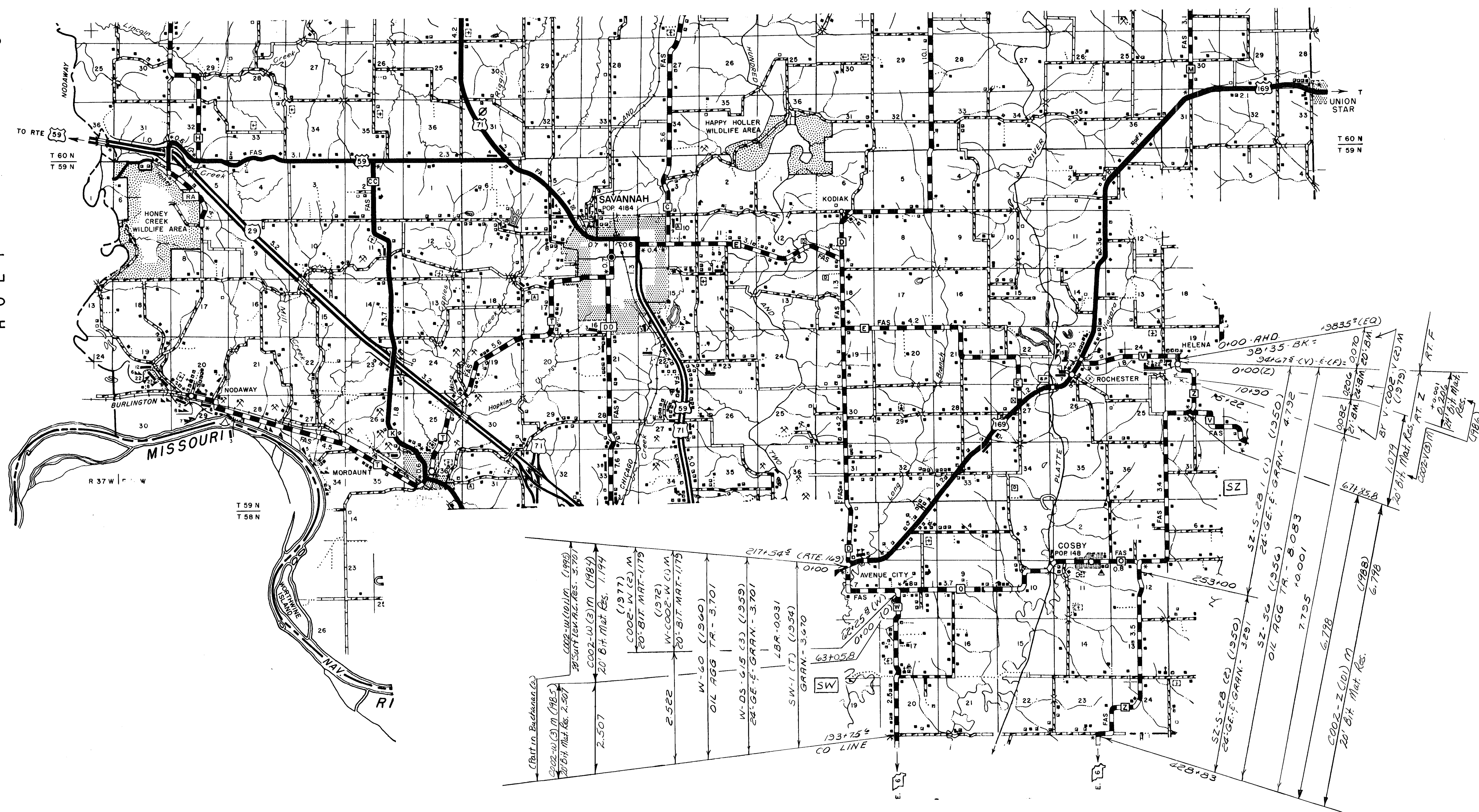
HOLT COUNTY

ROUTES: 59 PART  
P  
U  
F

002 SHEET 1 OF 12  
ANDREW

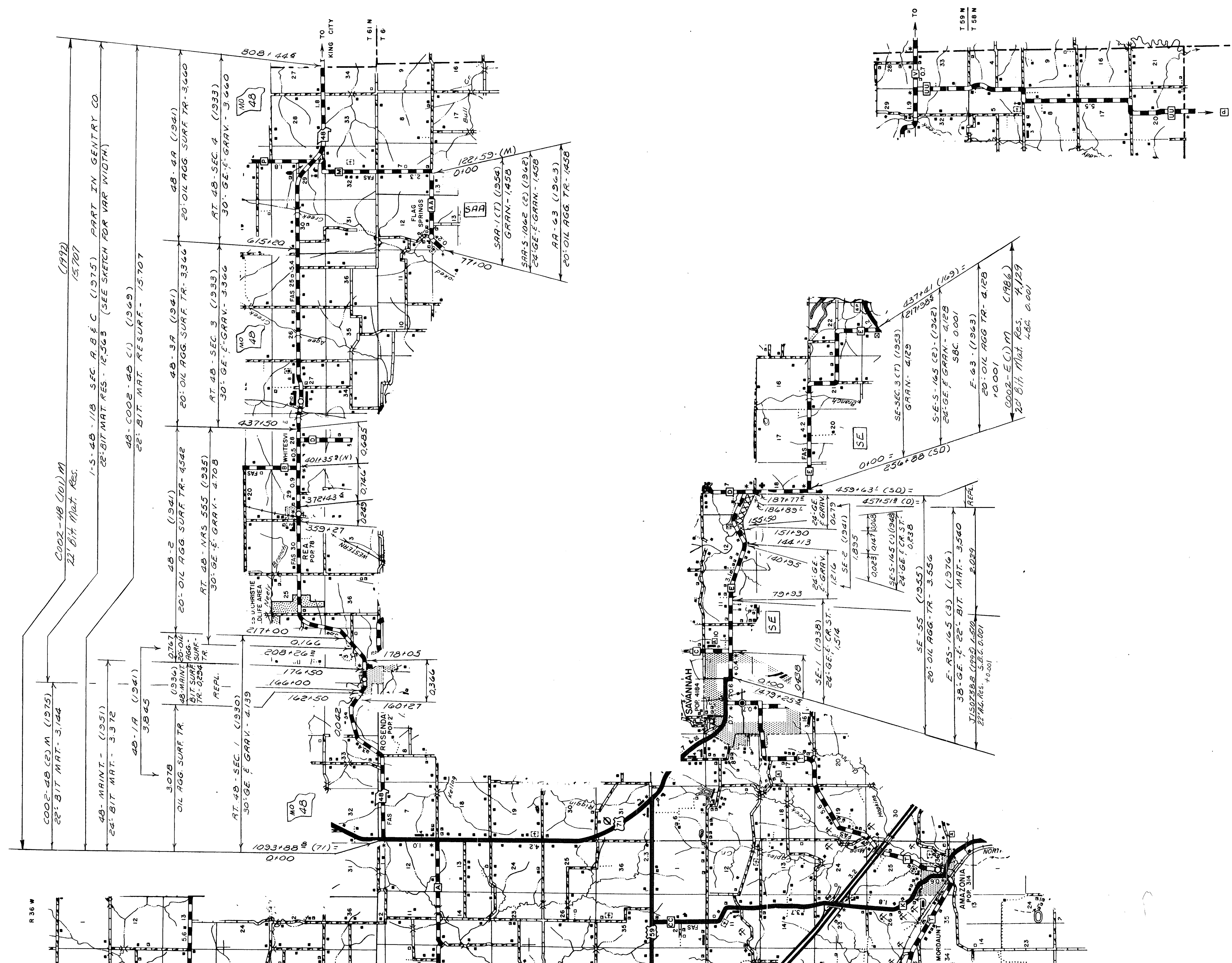


C  
HOLT



ROUTES : Z  
W





COO2-48 (101)M  
 22' BIT. MAT. RES. - 15,707  
 (1992)

1-S-48-1/18 SEC. A,B,E,C (1975) PART IN GENTRY CO.  
 22' BIT. MAT. RES. - 12,363 (SEE SKETCH FOR VAR. WIDTH)

COO2-48 (101)M  
 22' BIT. MAT. RES. - 15,707

48-1A (1941)  
 3845

48-2 (1941)  
 3078  
 OIL AGG. SURF. TR.

48-3A (1941)  
 20' OIL AGG. SURF. TR. - 3366

48-4A (1941)  
 20' OIL AGG. SURF. TR. - 3660

48-5 (1941)  
 20' OIL AGG. SURF. TR. - 4542

48-6 (1941)  
 20' OIL AGG. SURF. TR. - 4542

48-7 (1941)  
 20' OIL AGG. SURF. TR. - 4542

48-8 (1941)  
 20' OIL AGG. SURF. TR. - 4542

48-9 (1941)  
 20' OIL AGG. SURF. TR. - 4542

48-10 (1941)  
 20' OIL AGG. SURF. TR. - 4542

48-11 (1941)  
 20' OIL AGG. SURF. TR. - 4542

48-12 (1941)  
 20' OIL AGG. SURF. TR. - 4542

48-13 (1941)  
 20' OIL AGG. SURF. TR. - 4542

48-14 (1941)  
 20' OIL AGG. SURF. TR. - 4542

48-15 (1941)  
 20' OIL AGG. SURF. TR. - 4542

48-16 (1941)  
 20' OIL AGG. SURF. TR. - 4542

48-17 (1941)  
 20' OIL AGG. SURF. TR. - 4542

48-18 (1941)  
 20' OIL AGG. SURF. TR. - 4542

48-19 (1941)  
 20' OIL AGG. SURF. TR. - 4542

48-20 (1941)  
 20' OIL AGG. SURF. TR. - 4542

48-21 (1941)  
 20' OIL AGG. SURF. TR. - 4542

48-22 (1941)  
 20' OIL AGG. SURF. TR. - 4542

48-23 (1941)  
 20' OIL AGG. SURF. TR. - 4542

48-24 (1941)  
 20' OIL AGG. SURF. TR. - 4542

48-25 (1941)  
 20' OIL AGG. SURF. TR. - 4542

48-26 (1941)  
 20' OIL AGG. SURF. TR. - 4542

48-27 (1941)  
 20' OIL AGG. SURF. TR. - 4542

48-28 (1941)  
 20' OIL AGG. SURF. TR. - 4542

48-29 (1941)  
 20' OIL AGG. SURF. TR. - 4542

48-30 (1941)  
 20' OIL AGG. SURF. TR. - 4542

48-31 (1941)  
 20' OIL AGG. SURF. TR. - 4542

48-32 (1941)  
 20' OIL AGG. SURF. TR. - 4542

48-33 (1941)  
 20' OIL AGG. SURF. TR. - 4542

48-34 (1941)  
 20' OIL AGG. SURF. TR. - 4542

48-35 (1941)  
 20' OIL AGG. SURF. TR. - 4542

48-36 (1941)  
 20' OIL AGG. SURF. TR. - 4542

48-37 (1941)  
 20' OIL AGG. SURF. TR. - 4542

48-38 (1941)  
 20' OIL AGG. SURF. TR. - 4542

48-39 (1941)  
 20' OIL AGG. SURF. TR. - 4542

48-40 (1941)  
 20' OIL AGG. SURF. TR. - 4542

48-41 (1941)  
 20' OIL AGG. SURF. TR. - 4542

48-42 (1941)  
 20' OIL AGG. SURF. TR. - 4542

48-43 (1941)  
 20' OIL AGG. SURF. TR. - 4542

48-44 (1941)  
 20' OIL AGG. SURF. TR. - 4542

48-45 (1941)  
 20' OIL AGG. SURF. TR. - 4542

48-46 (1941)  
 20' OIL AGG. SURF. TR. - 4542

48-47 (1941)  
 20' OIL AGG. SURF. TR. - 4542

48-48 (1941)  
 20' OIL AGG. SURF. TR. - 4542

48-49 (1941)  
 20' OIL AGG. SURF. TR. - 4542

48-50 (1941)  
 20' OIL AGG. SURF. TR. - 4542

48-51 (1941)  
 20' OIL AGG. SURF. TR. - 4542

48-52 (1941)  
 20' OIL AGG. SURF. TR. - 4542

48-53 (1941)  
 20' OIL AGG. SURF. TR. - 4542

48-54 (1941)  
 20' OIL AGG. SURF. TR. - 4542

48-55 (1941)  
 20' OIL AGG. SURF. TR. - 4542

48-56 (1941)  
 20' OIL AGG. SURF. TR. - 4542

48-57 (1941)  
 20' OIL AGG. SURF. TR. - 4542

48-58 (1941)  
 20' OIL AGG. SURF. TR. - 4542

48-59 (1941)  
 20' OIL AGG. SURF. TR. - 4542

48-60 (1941)  
 20' OIL AGG. SURF. TR. - 4542

48-61 (1941)  
 20' OIL AGG. SURF. TR. - 4542

48-62 (1941)  
 20' OIL AGG. SURF. TR. - 4542

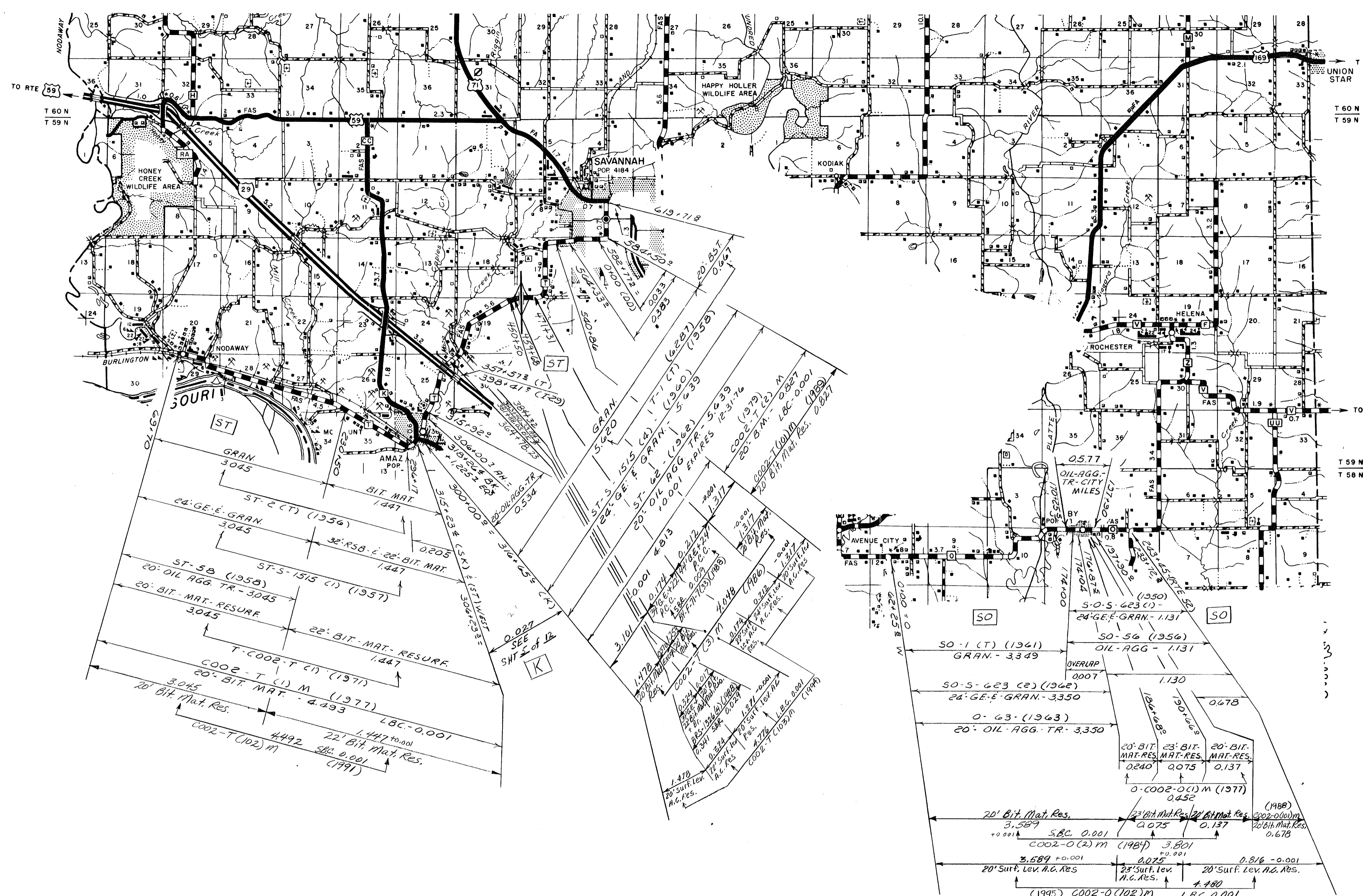
48-63 (1941)  
 20' OIL AGG. SURF. TR. - 4542

ROUTES: 48  
 AA  
 E

002 SHEET 3 OF 12  
 ANDREW

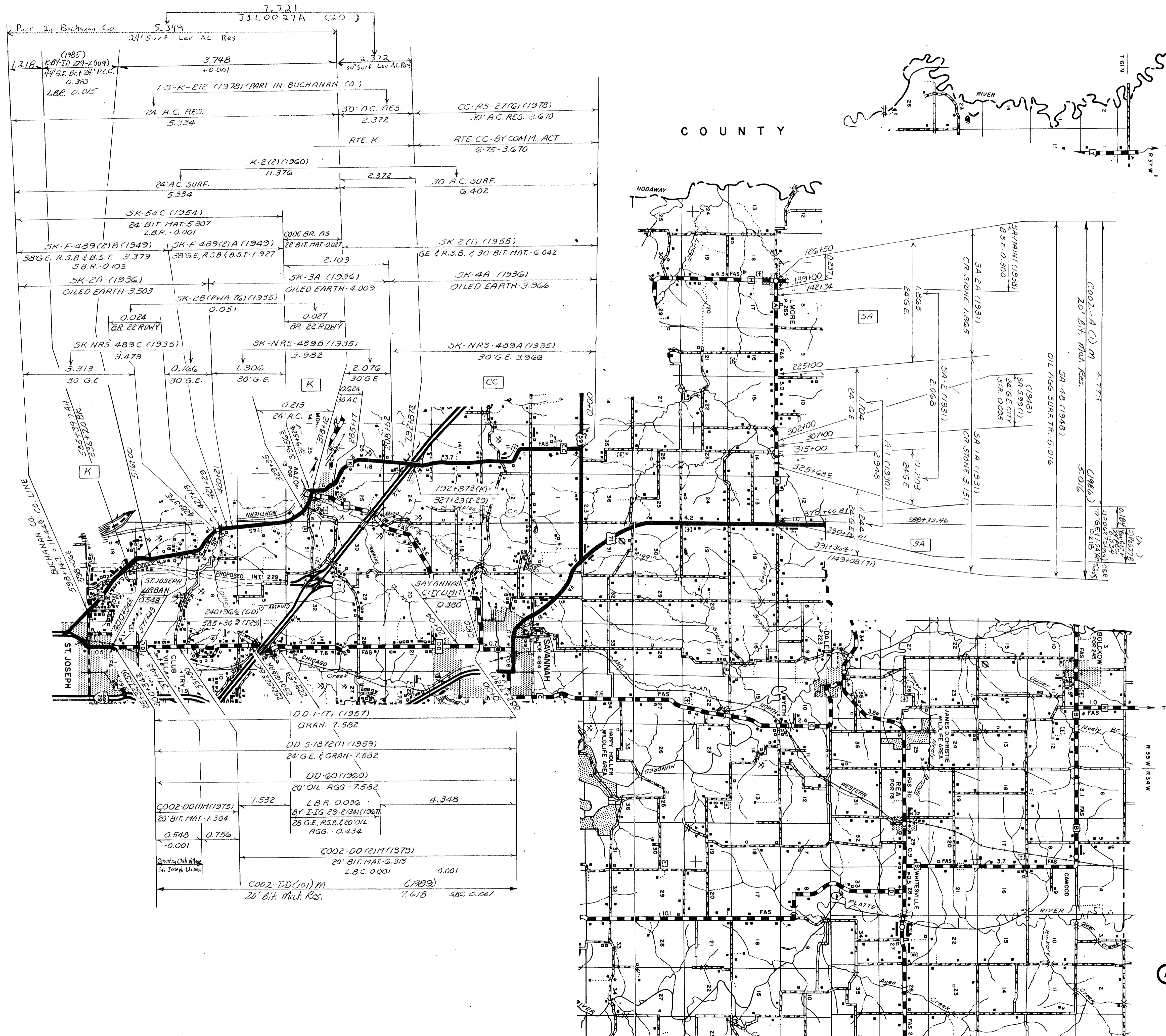


HOLT



ROUTES : T  
O



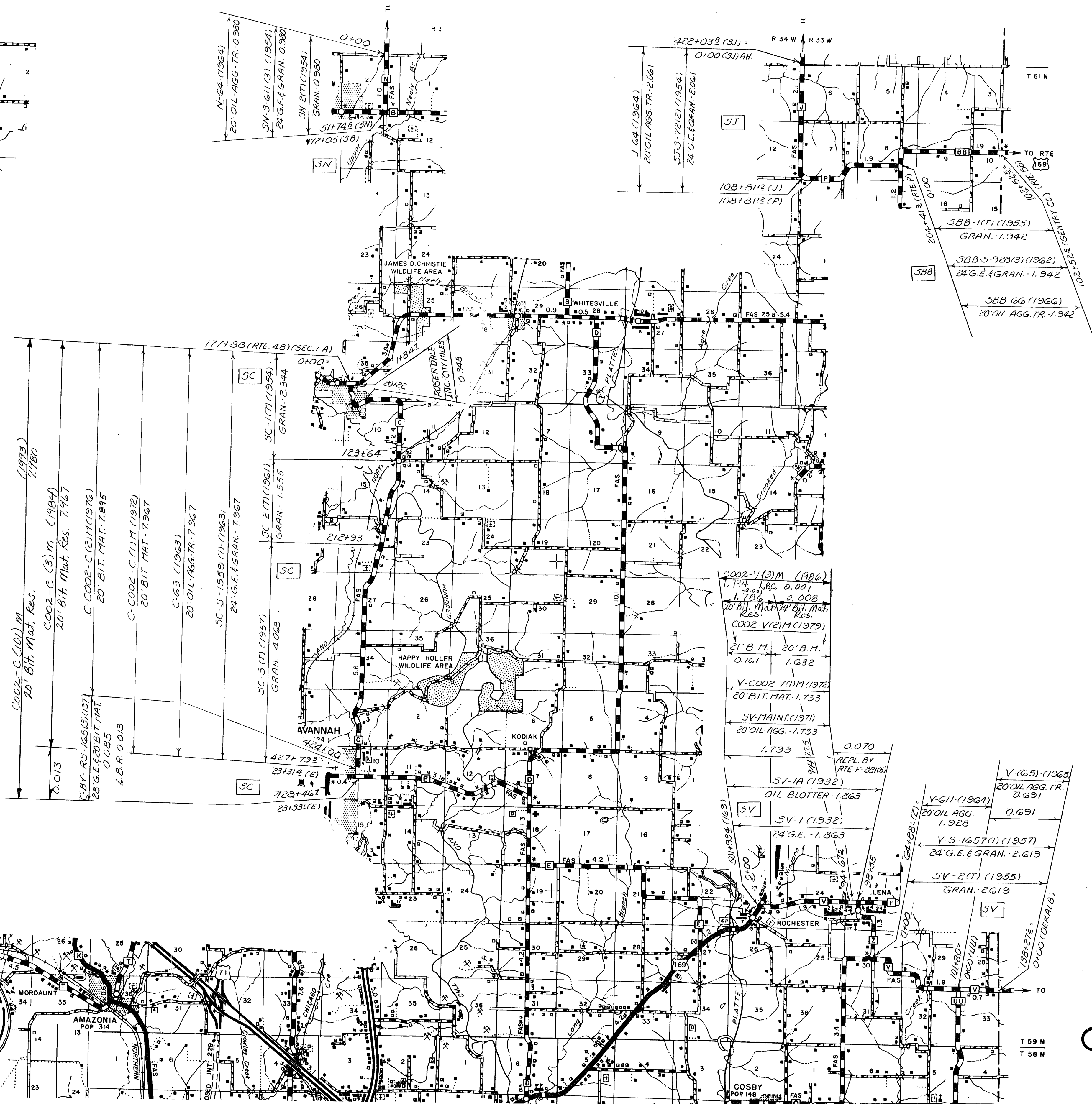
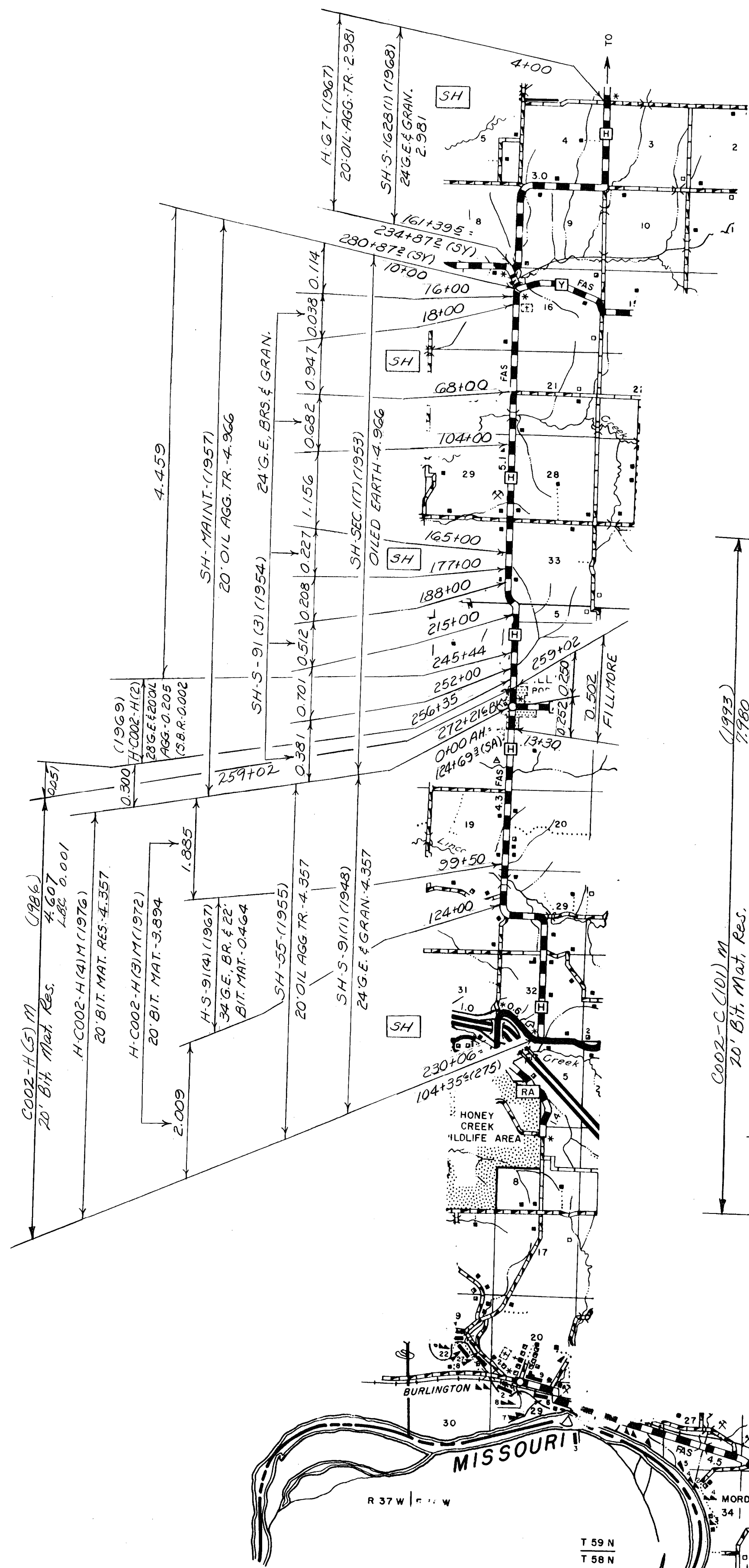


C O U N T Y

ROUTES:  
 DD -  
 CC -  
 K -  
 A -

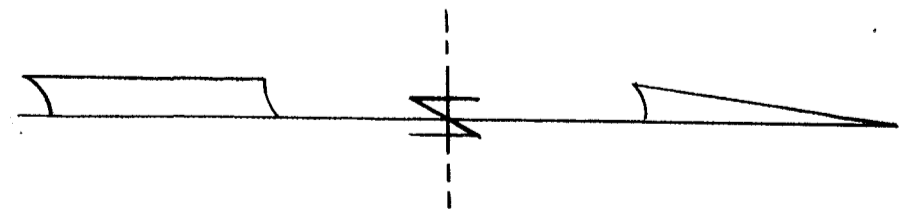
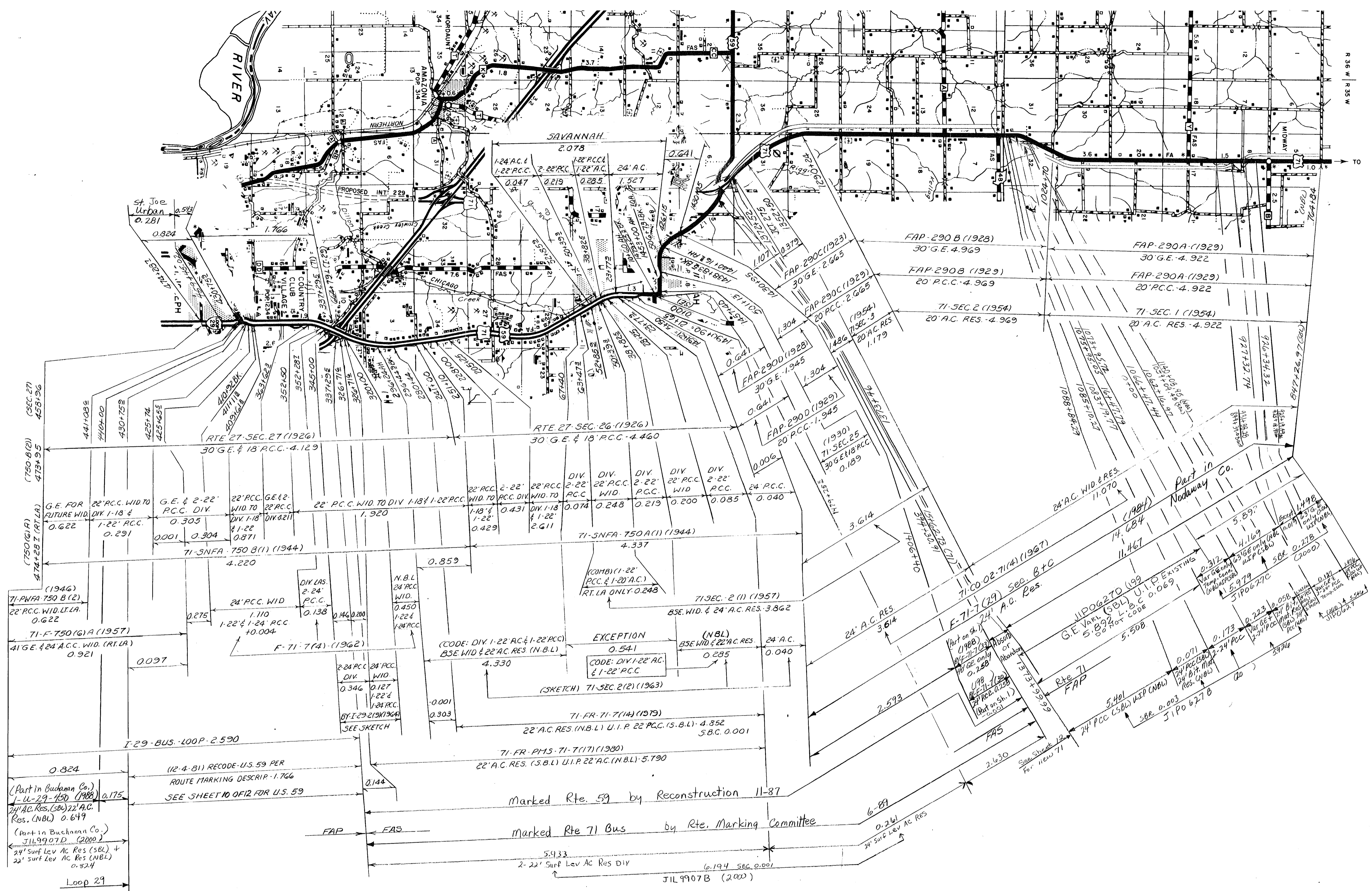
002 SHEET 5 OF 12  
 ANDREW





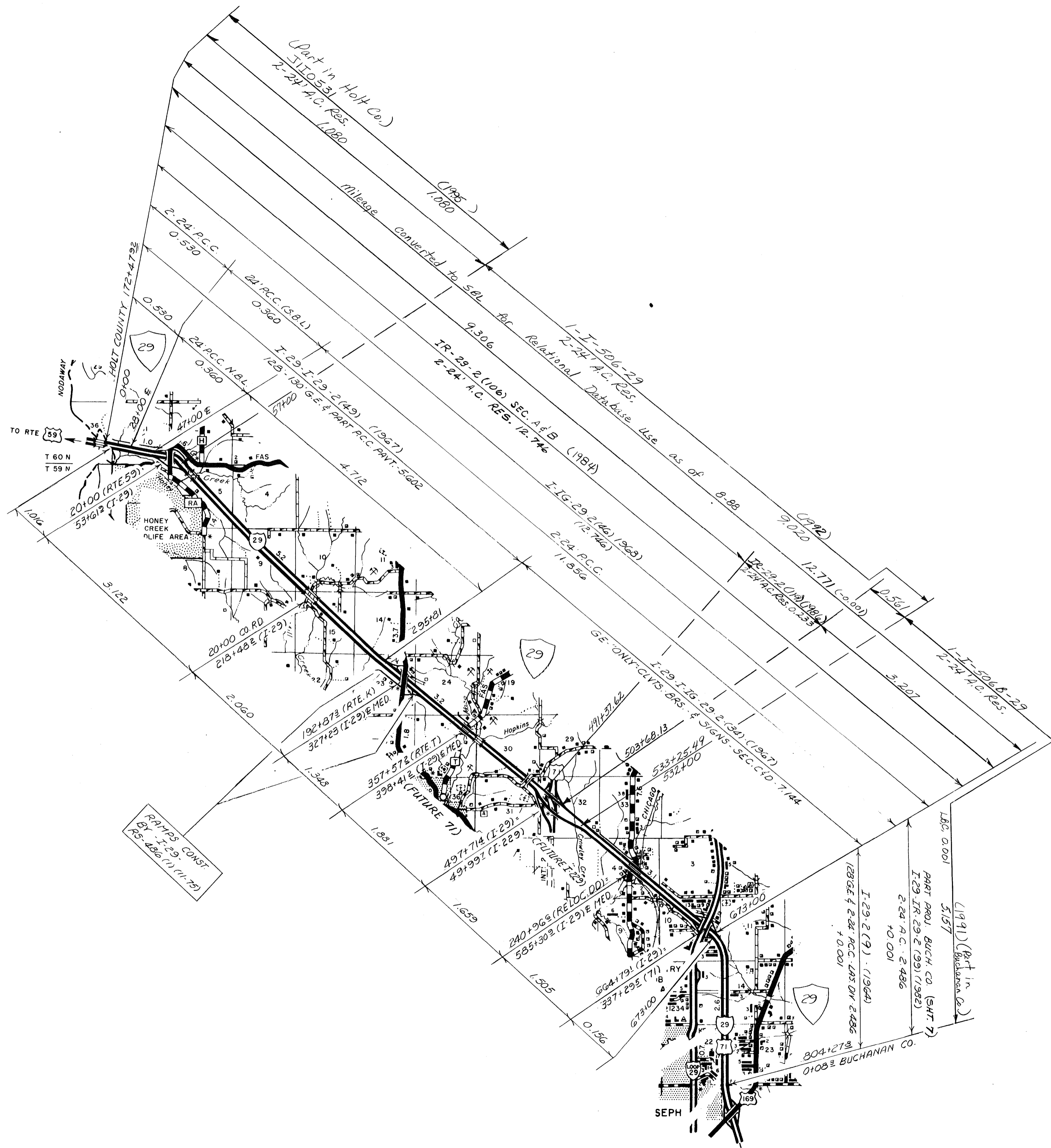
ROUTES:  
 H  
 C  
 N  
 J  
 V  
 BB





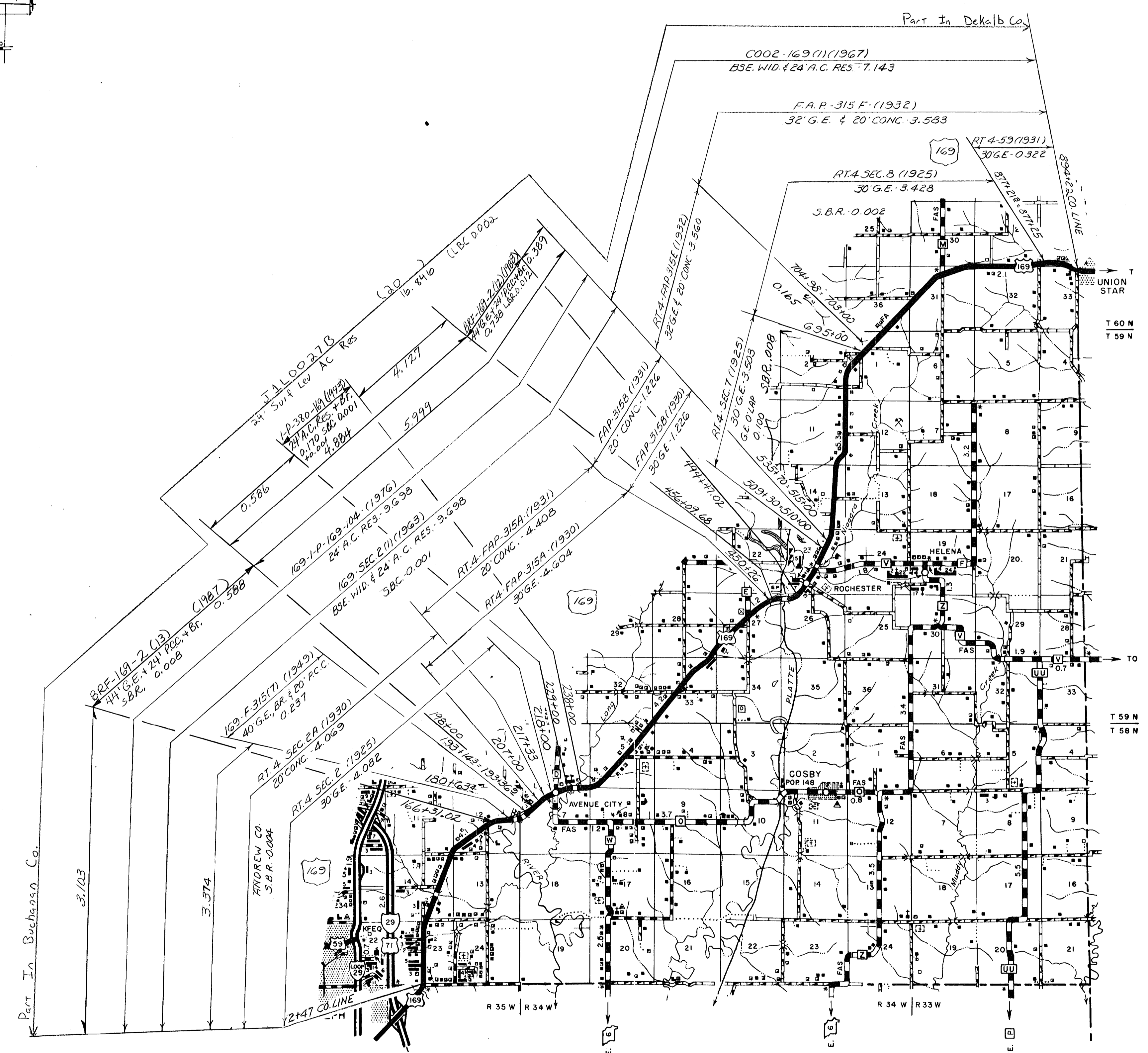
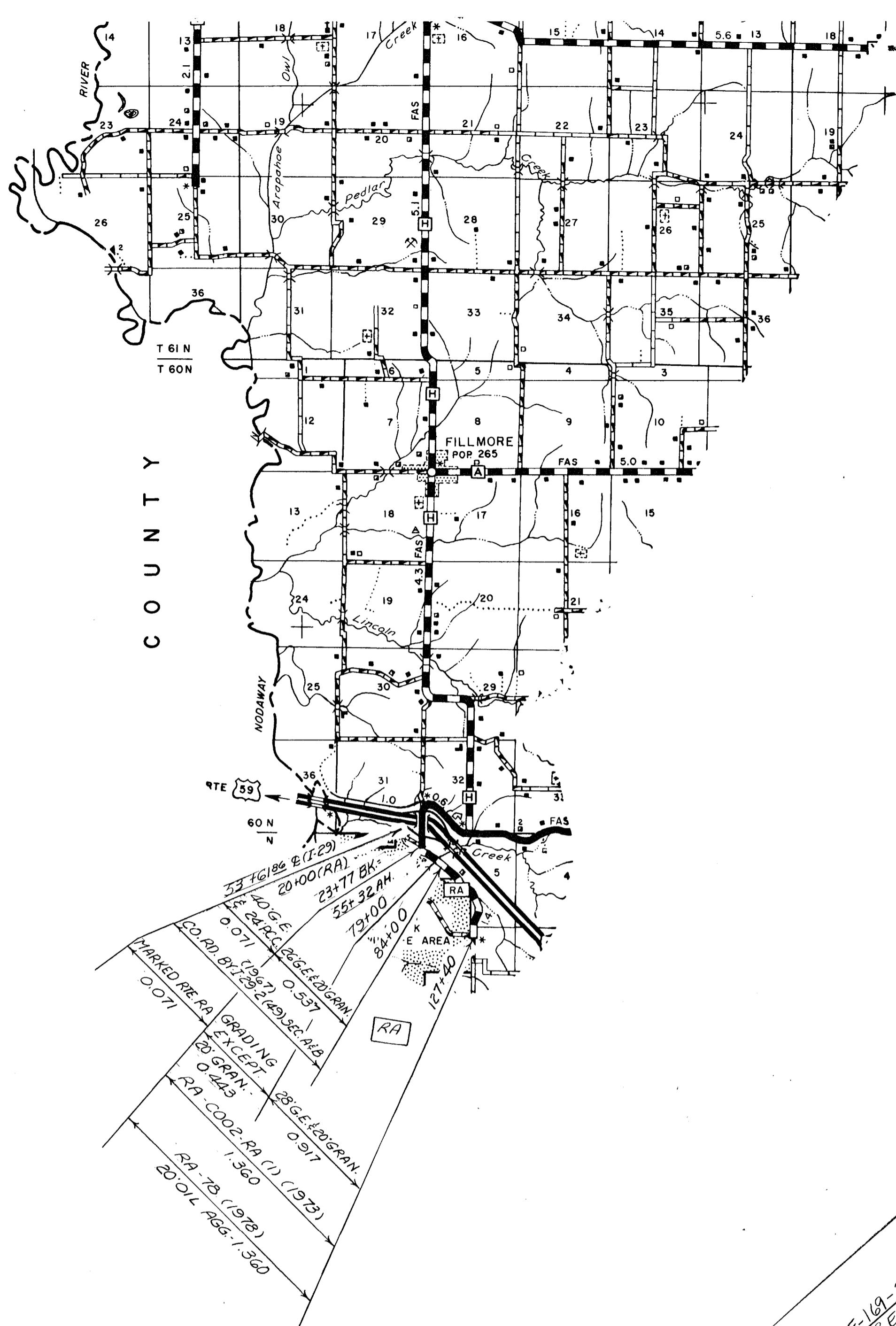
ROUTES:  
71 Part  
29 LOOP  
71 Bus.





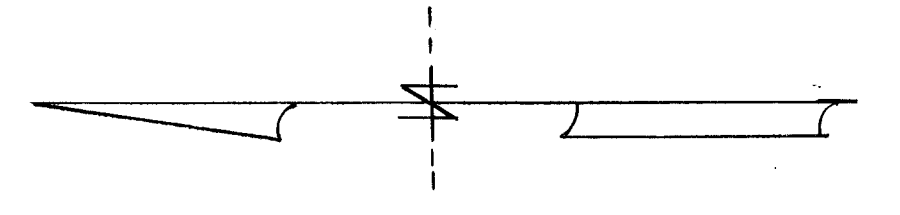
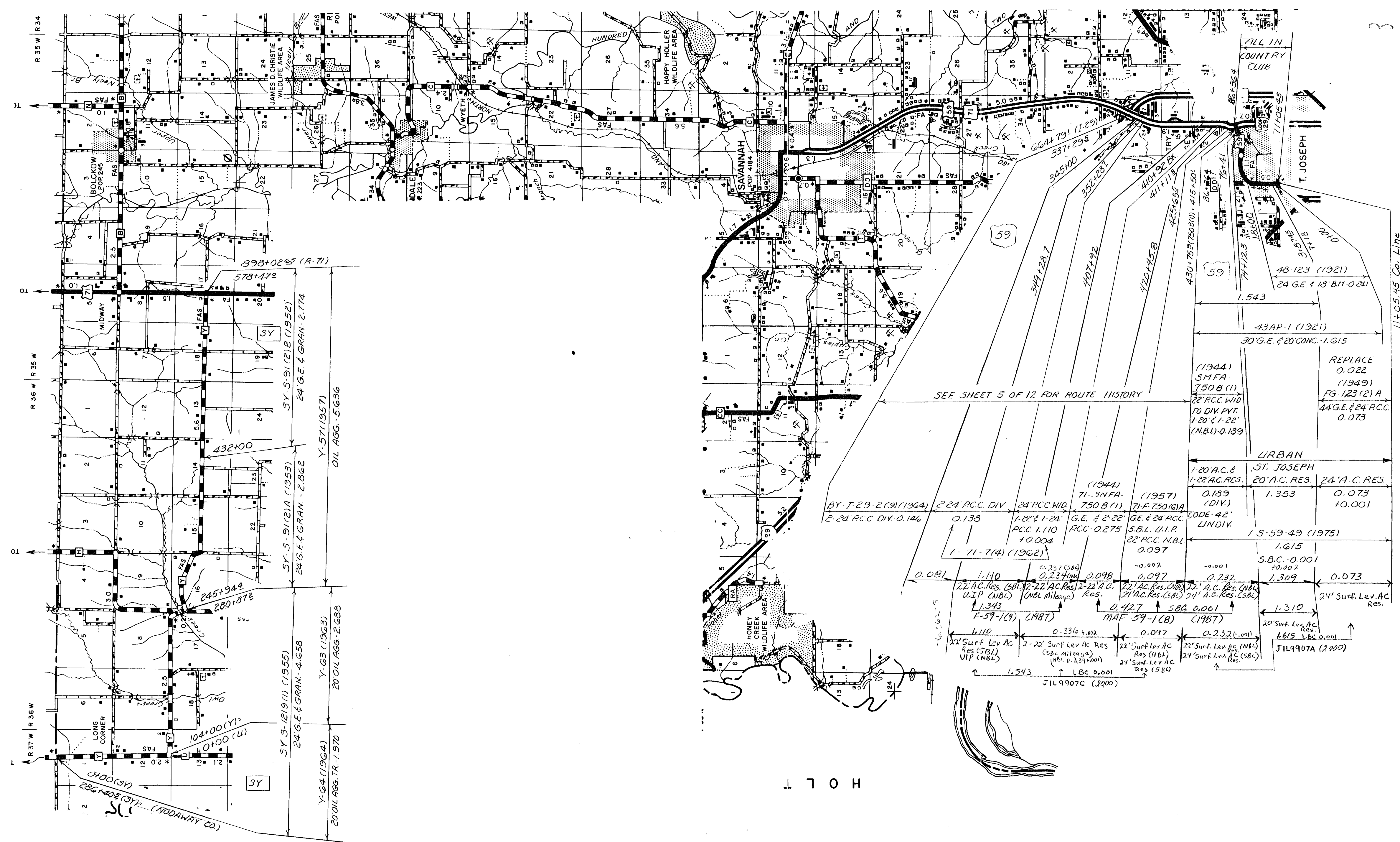
ROUTES: 29 -





ROUTES:  
169 -  
RA -



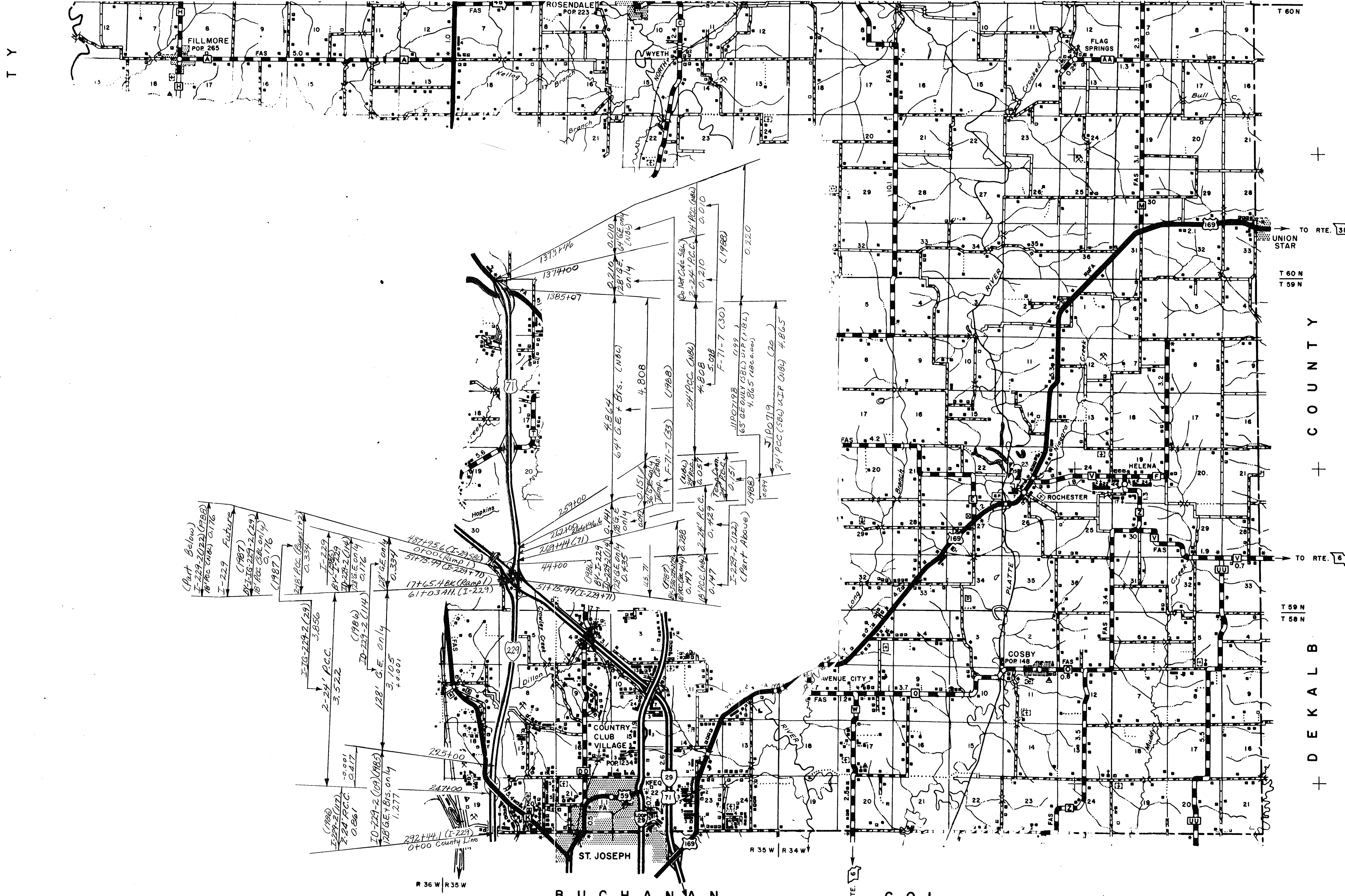


ROUTES:  
59 (PART)  
Y









T 60 N  
 T 59 N  
 T 58 N  
 COUNTY  
 DEKALB  
 COI

ROUTES:  
 I-229  
 71 Part

- |  |  |                  |   |
|--|--|------------------|---|
| Railroad Below<br>Railroad Tunnel<br>Military Air Field<br>Commercial or Municipal Air Field<br>Landing Area or Strip<br>Aircraft Beacon Light | Refuse, Garbage or Trash<br>Auto Graveyard<br>Scrap Metal<br>Cannery Building Material | Junkyards<br>And | Post Office<br>Town or Community Hall<br>Mixed Cultural Features Closely Spaced<br>County Home, Farm or Infirmary |
|--|--|------------------|---|