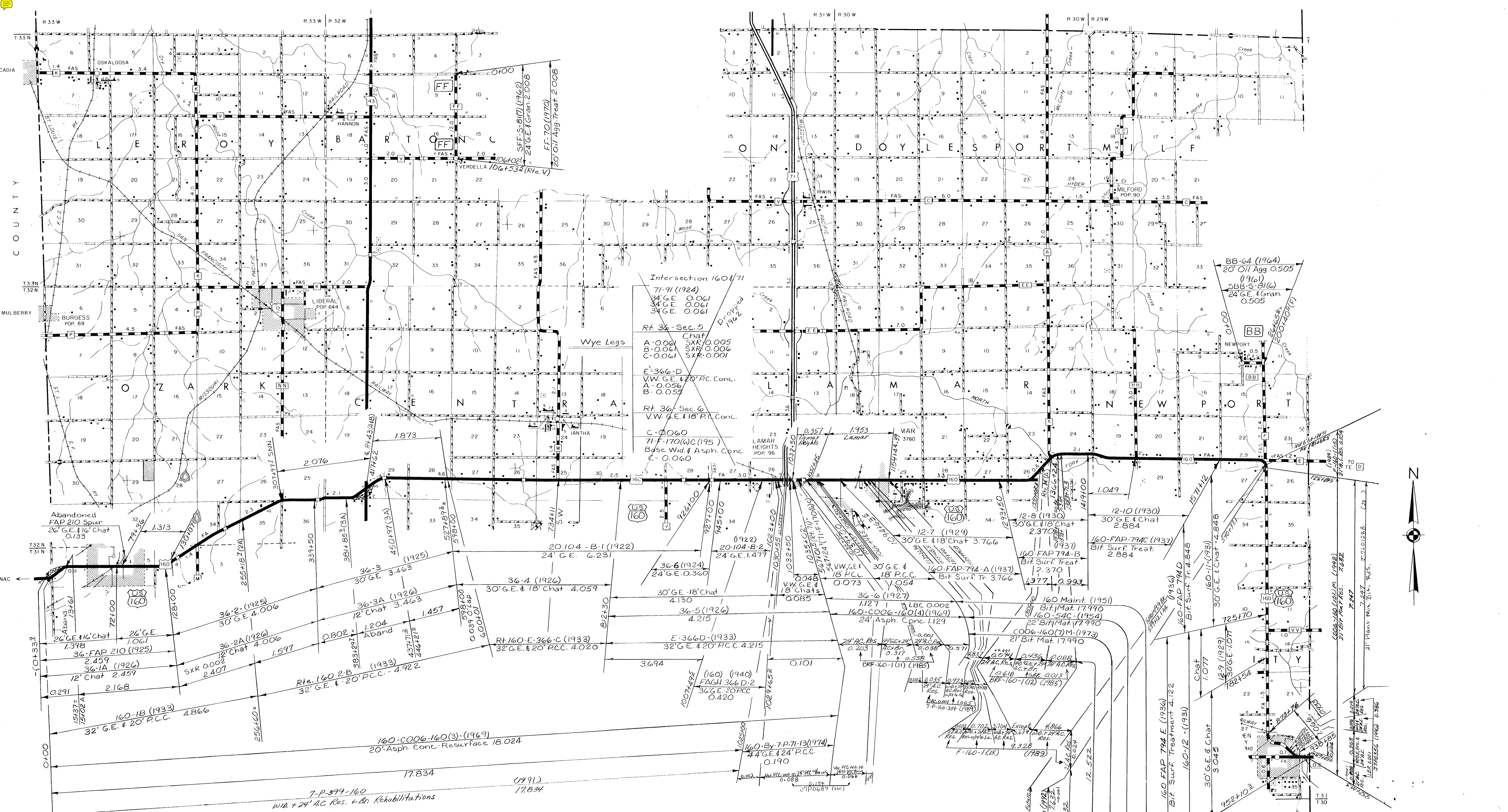


006  
BARTON  
ROUTES:  
126, CC  
SHEET 4 OF 9

⑦





Intersection 160/71  
 71-91 (1924)  
 34' G.E. 0.061  
 34' G.E. 0.061  
 34' G.E. 0.061  
 Rt. 36 - Sec. 5  
 Chat  
 A - 0.006 SXR 0.005  
 B - 0.006 SXR 0.006  
 C - 0.006 SXR 0.001  
 E-366-D  
 V.W. G.E. & 20' P.C. Conc.  
 A - 0.056  
 B - 0.056  
 Rt. 36 - Sec. 6  
 V.W. G.E. & 18' P.C. Conc.  
 C - 0.060  
 71-F-170(w)C (195)  
 Base Wid. & Asph. Conc.  
 C - 0.060

BB-64 (1964)  
 20' Oil Agg. 0.505  
 (1961)  
 5BB-S-B(6)  
 24' G.E. & Gran.  
 0.505

006

ROUTES:  
160, BB, FF

BARTON

SHEET 5 OF 9

⑦



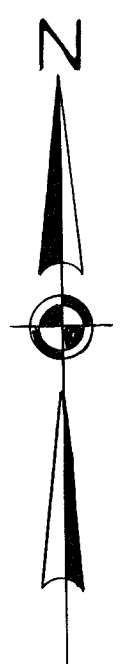
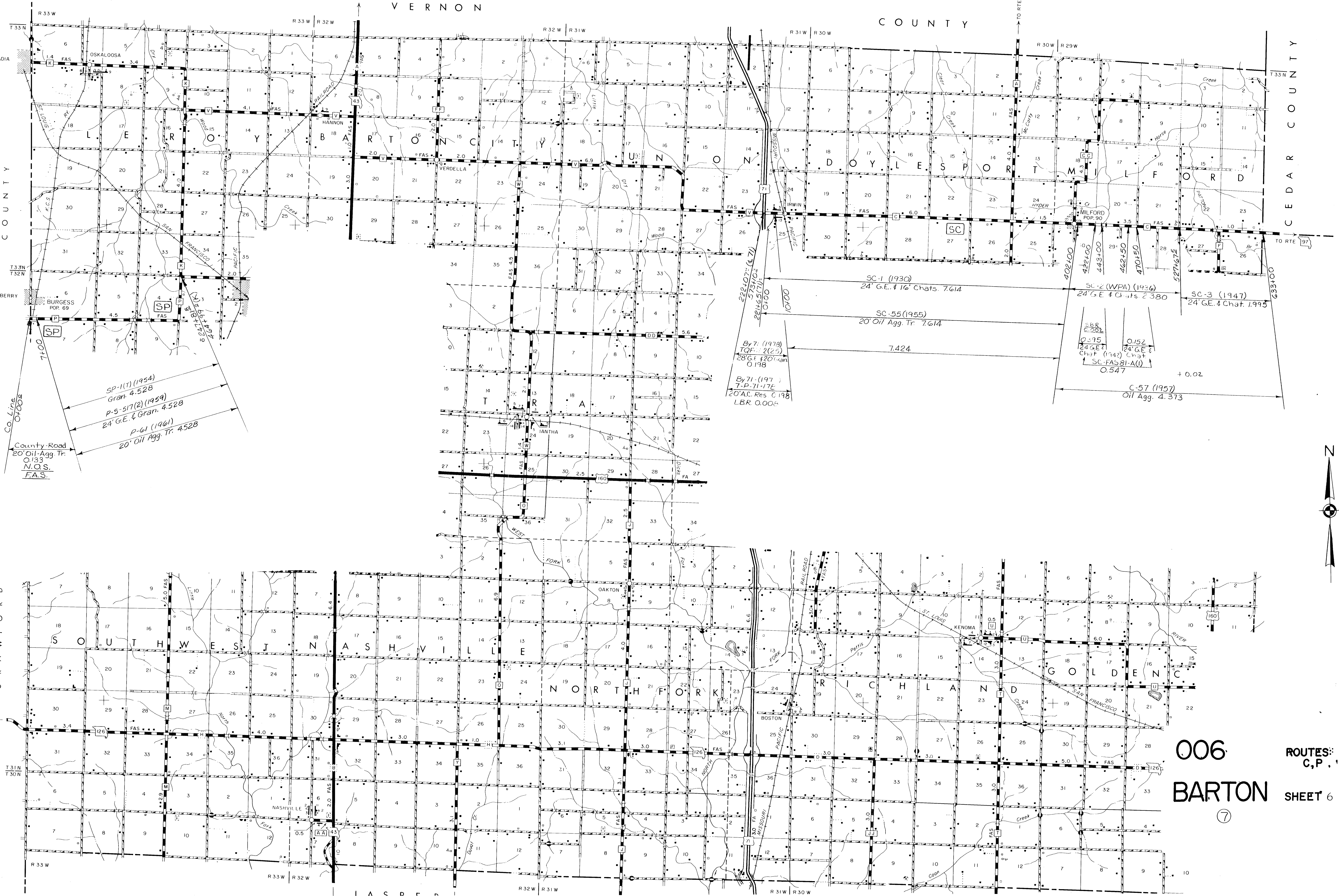
VERNON COUNTY

KANSAS COUNTY

CEDAR COUNTY

FRONTEN  
CRAWFORD

PITTSBURG



006  
BARTON  
⑦

ROUTES:  
C, P, 11  
SHEET 6 OF 9

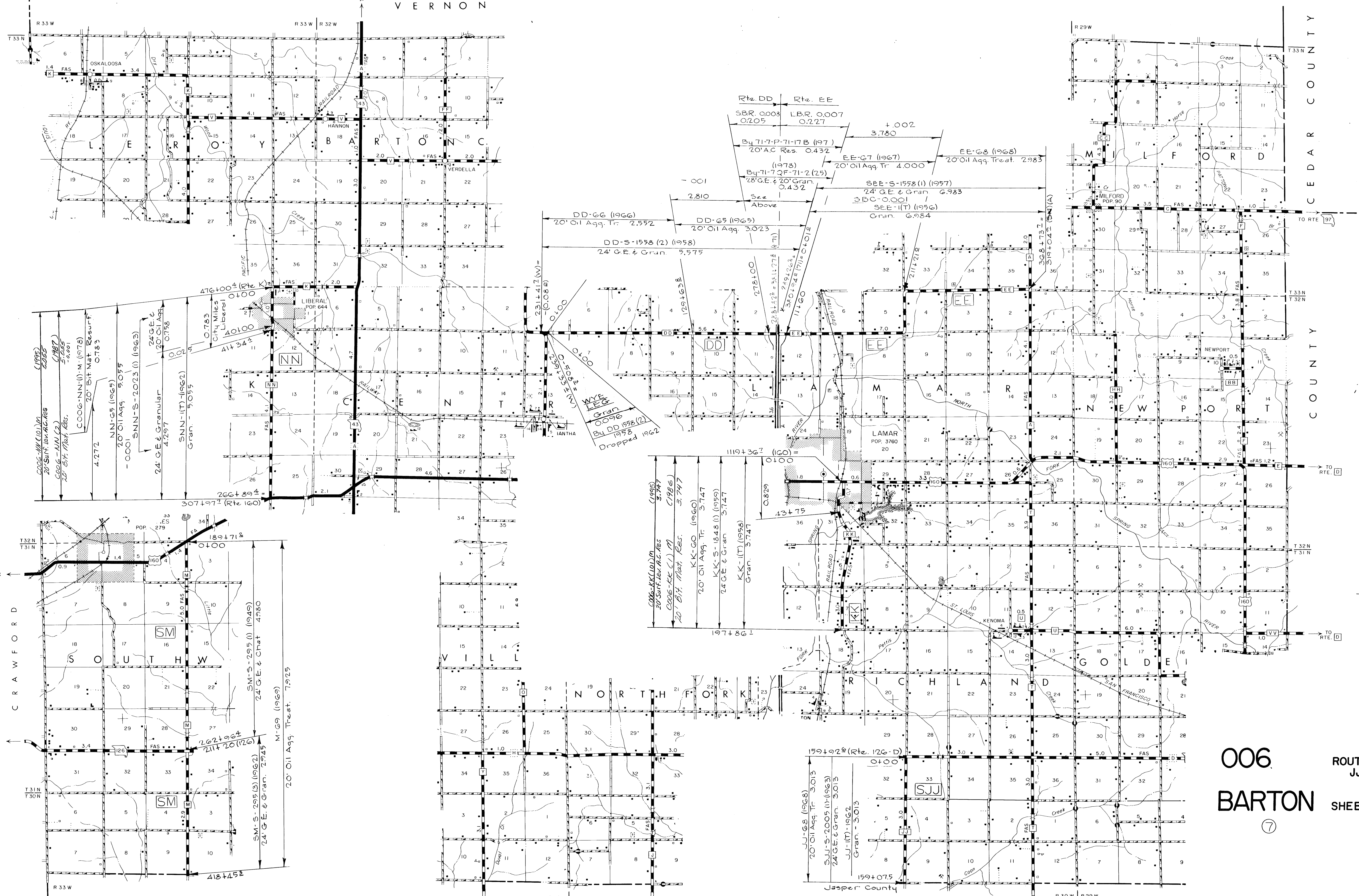












006  
**BARTON**  
 (7)

ROUTES: DD,  
 JJ, EE, M, NN, KK

SHEET 9 OF 9

