

County line split from Sta. 0+00 to 7+11.25 All coded in Bates Co.

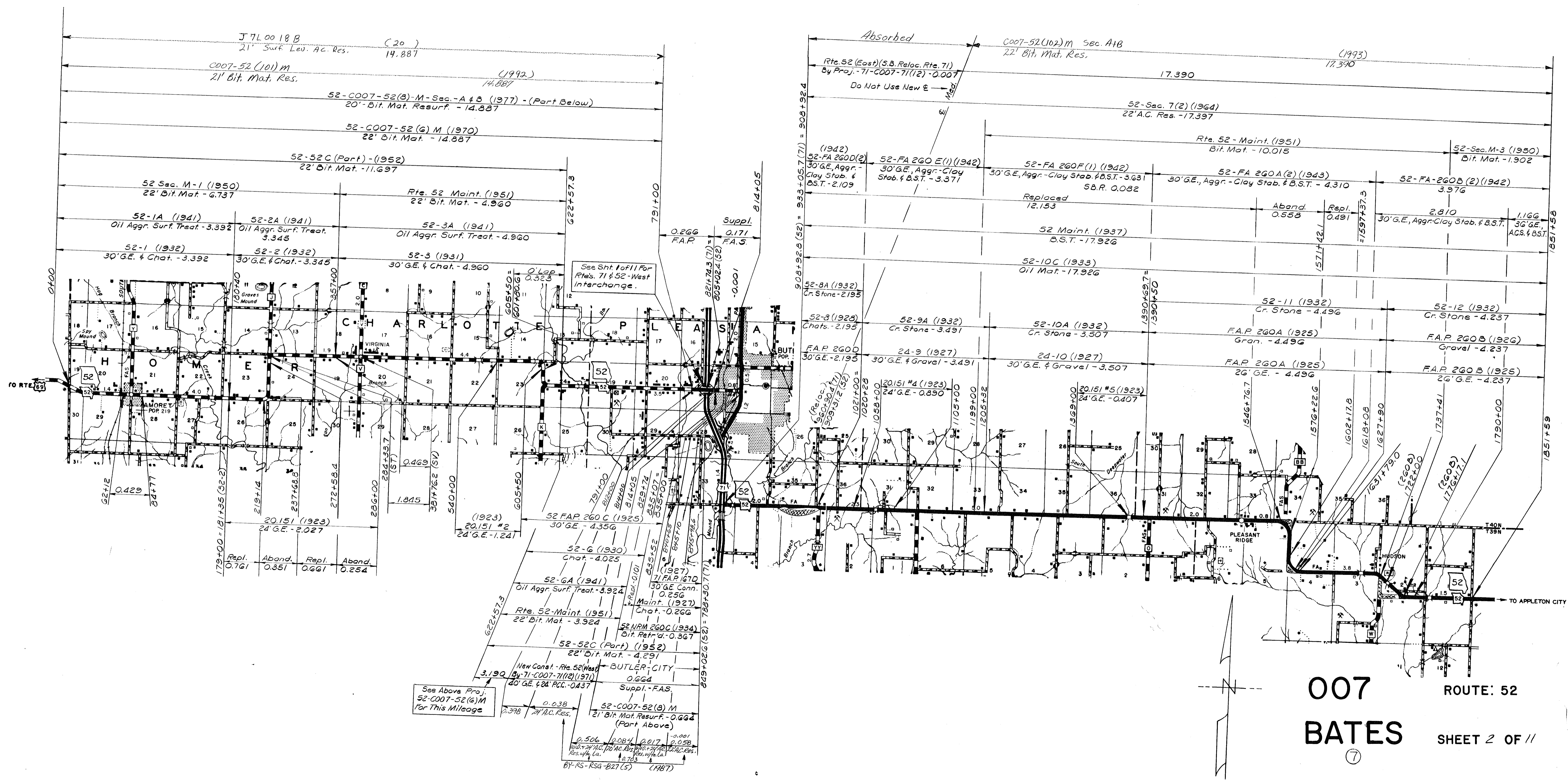
**007**

**BATES**

ROUTES:  
Part 18, E, T, AA

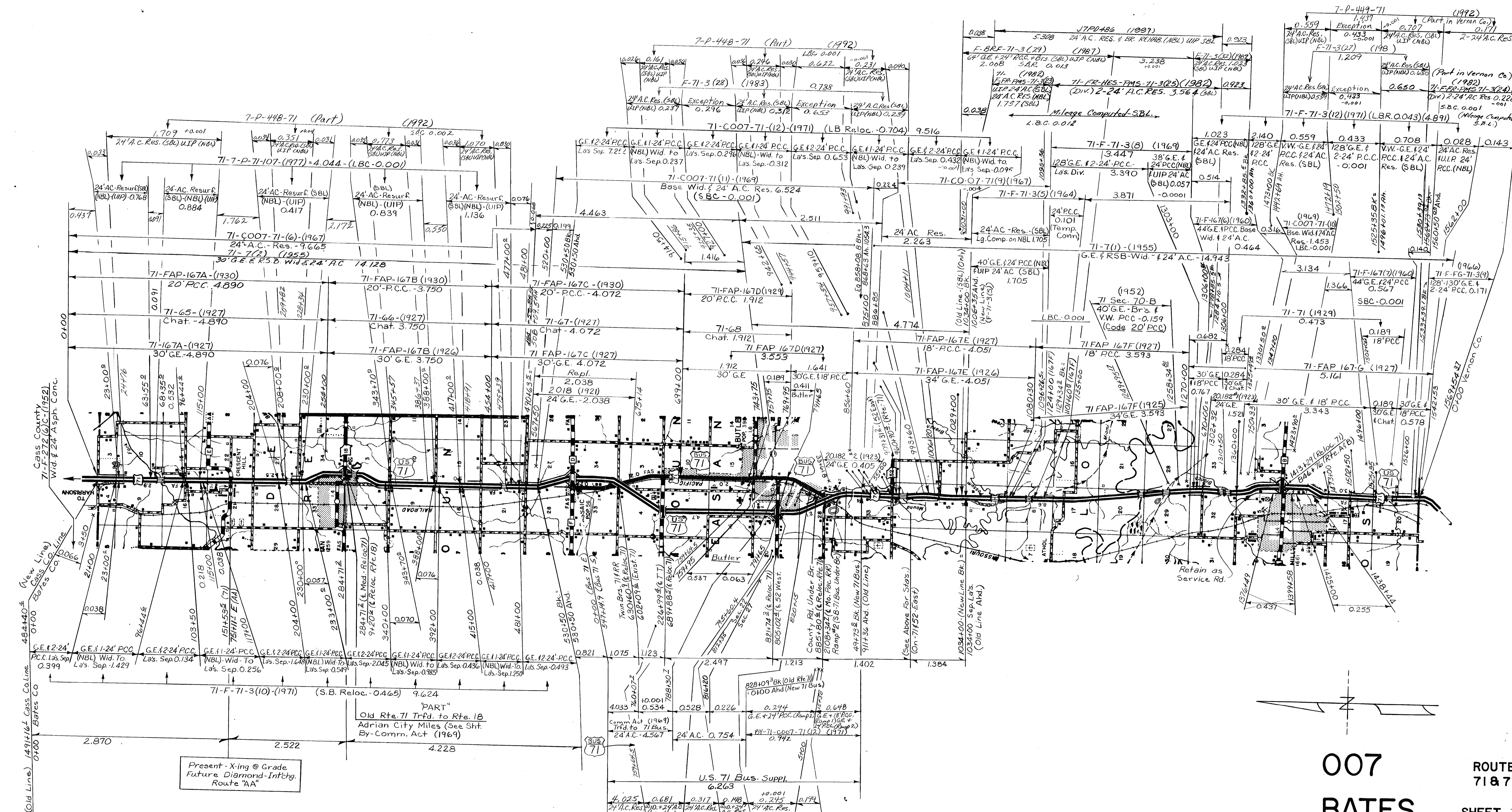
SHEET 1 OF 11

See Sheet 6 for future projects



007  
 BATES  
 ⑦

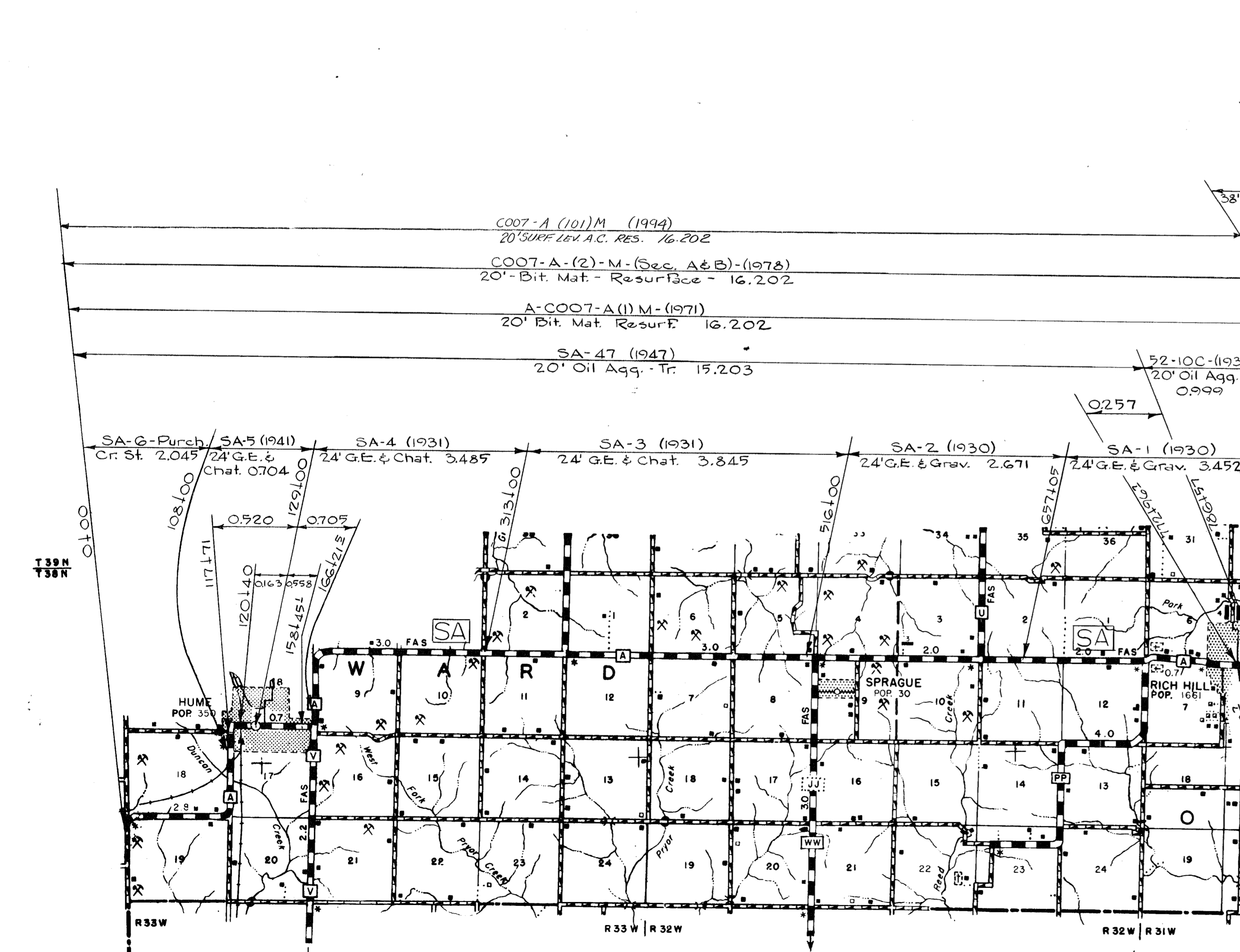
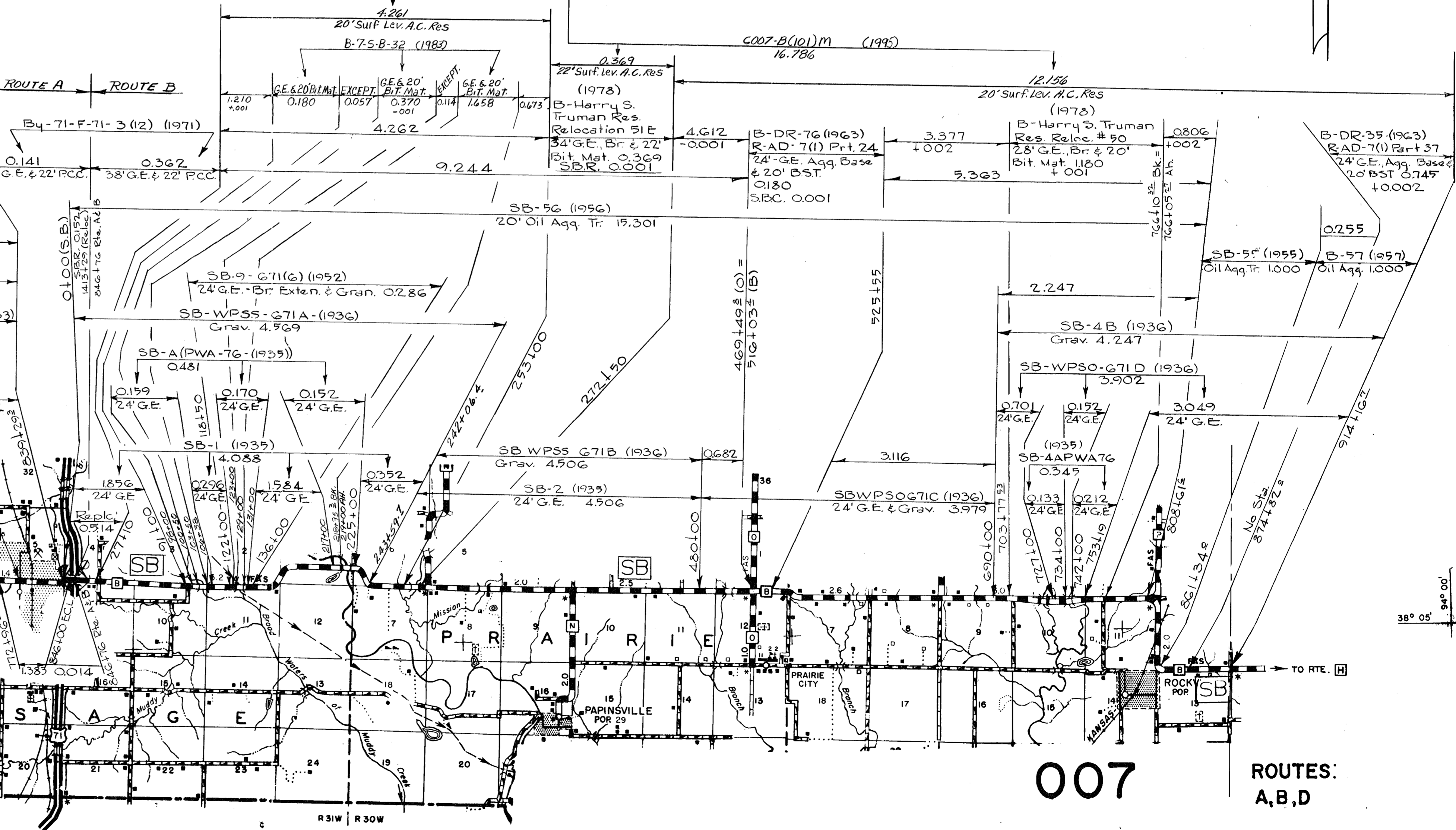
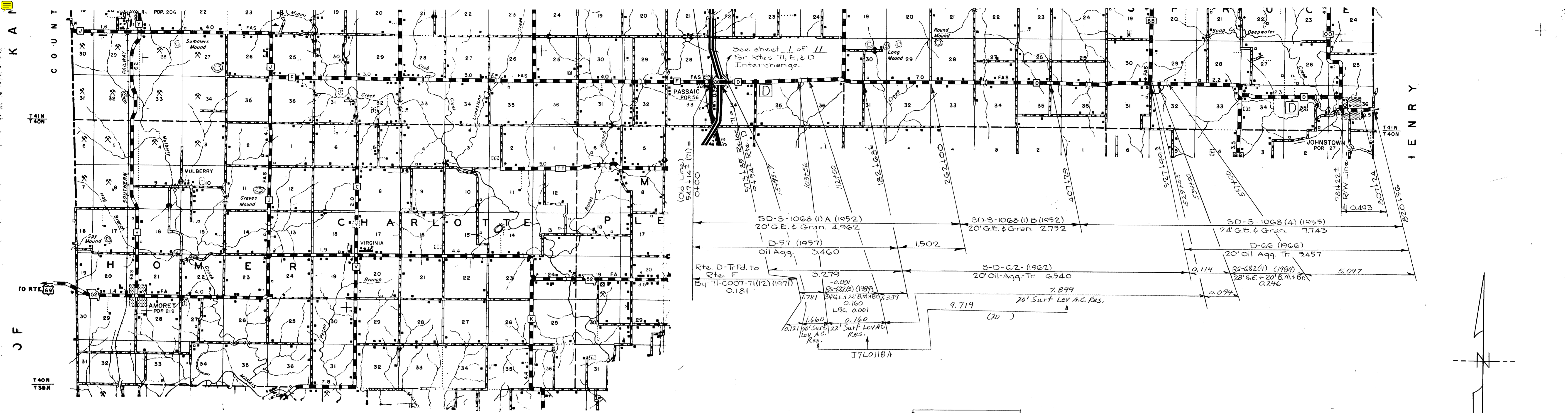
ROUTE: 52  
 SHEET 2 OF 11



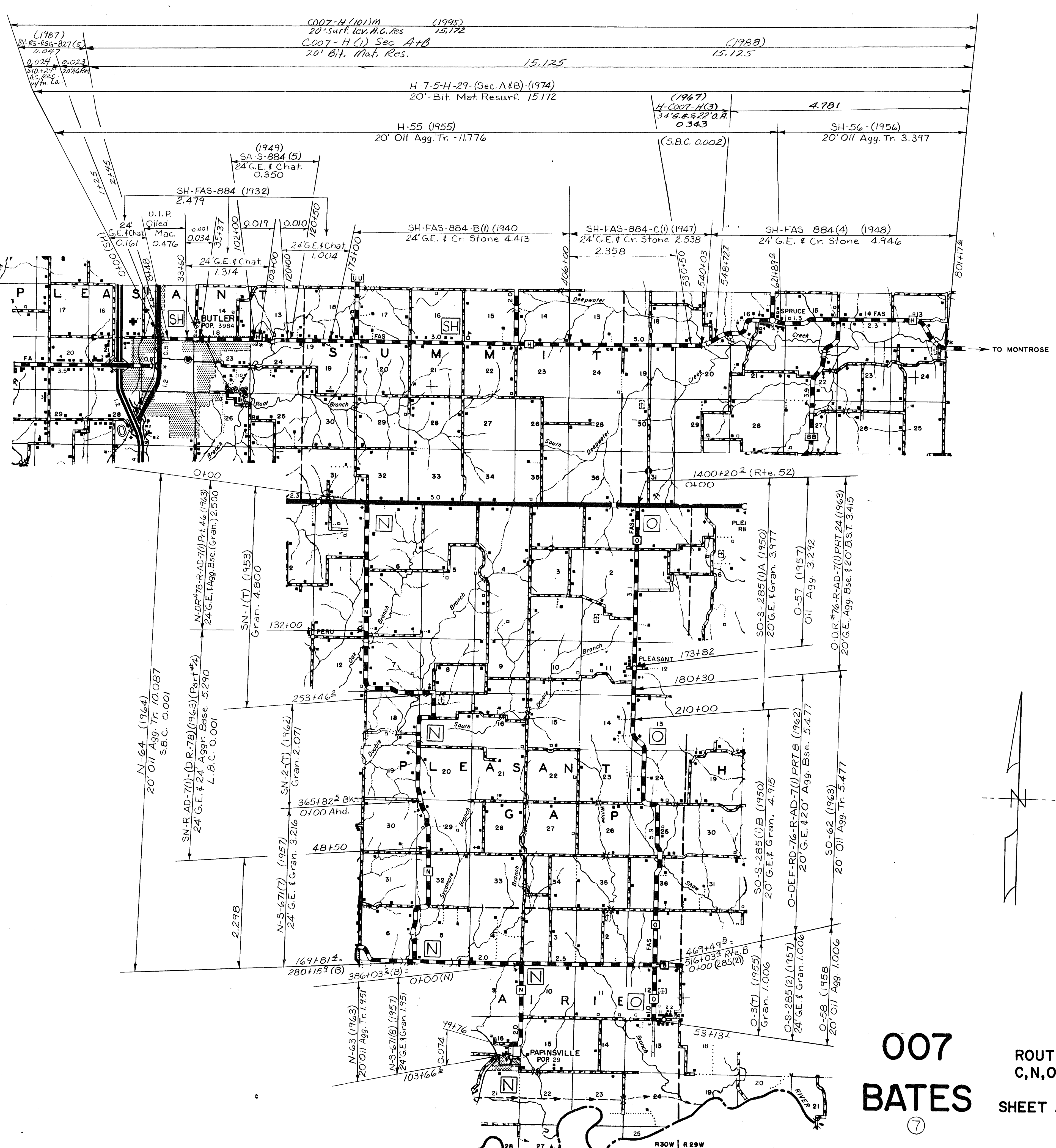
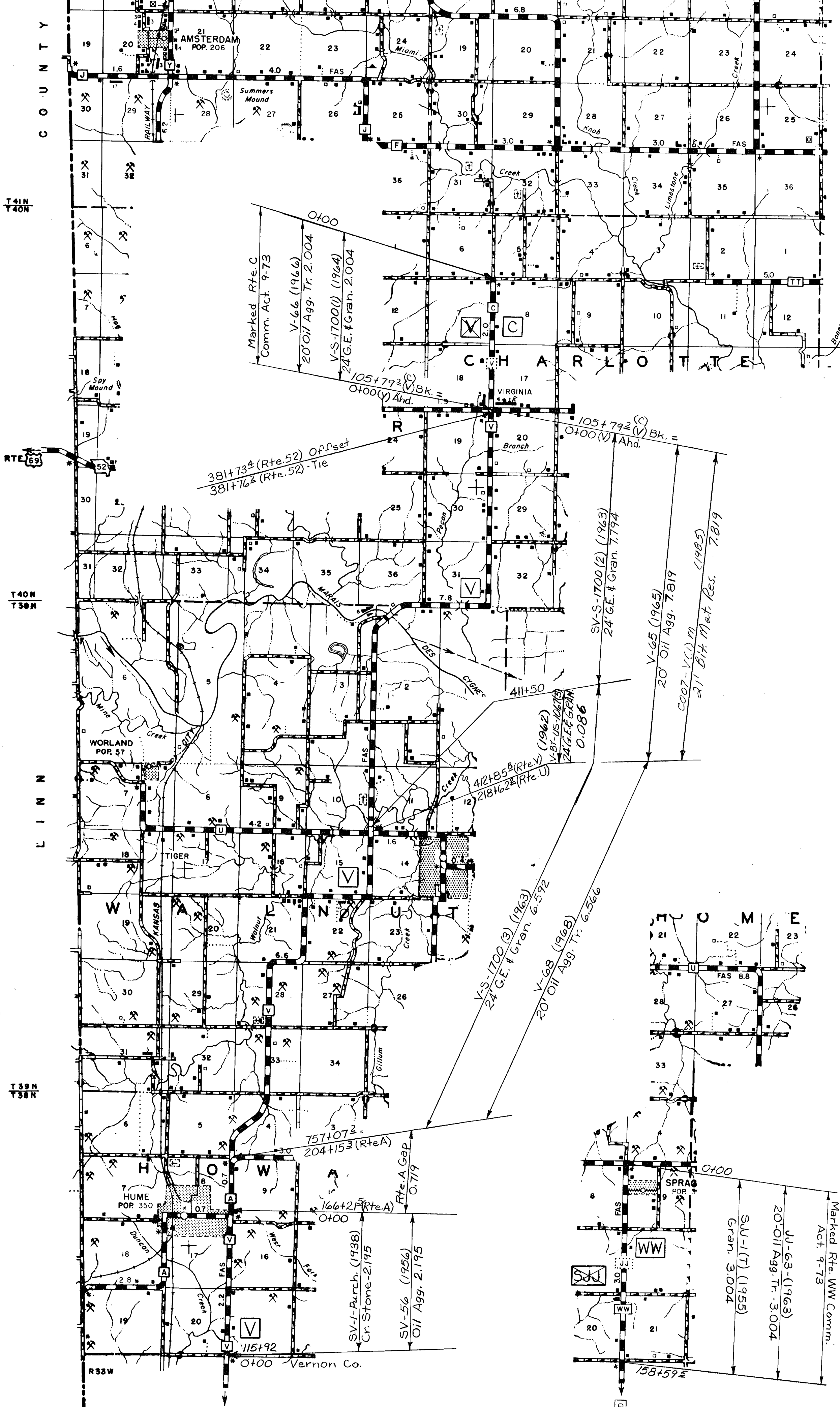
007  
BATES

ROUTES:  
71 & 71 Bus. (Part)  
SHEET 3 OF 11

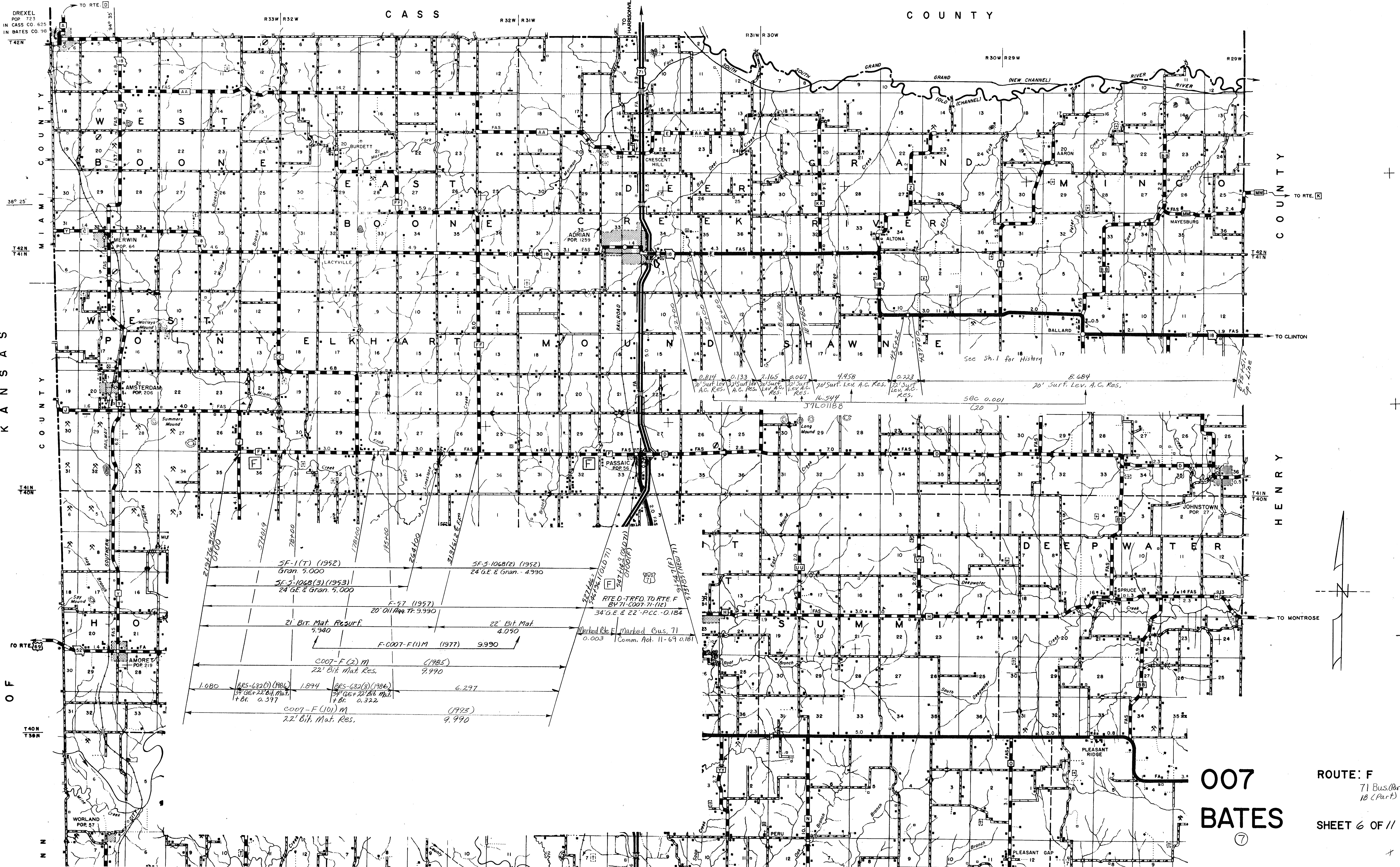
7



007  
**BATES**  
 ROUTES:  
 A, B, D  
 SHEET 4 OF 11



DREXEL  
POP. 723  
IN CASS CO. 625  
IN BATES CO. 98



OF KANSAS

M I A M I C O U N T Y  
T 4 2 N  
T 4 1 N  
T 4 0 N  
T 3 9 N

C O U N T Y  
T O R T E . K  
T O C L I N T O N  
T O M O N T R O S E

SF-1(T) (1952) Gran. 5,000  
 SF-5-106B(3) (1953) 24' G.E. & Gran. 5,000  
 F-77 (1957) 20' Oil/Agg. Tr. 9,990  
 21' Bit. Mat. Resurf. 9,940  
 22' Bit. Mat. 4,050  
 F-007-F(1)M (1977) 9,990  
 C007-F(2)M (1985) 22' Bit. Mat. Res. 9,990  
 1,080 ARS-682(1) (1986) 34' G.E. + 22' Bit. Mat. + Br. 0.397  
 1,894 ARS-682(2) (1986) 34' G.E. + 22' Bit. Mat. + Br. 0.322  
 6,297  
 C007-F(10)M (1993) 22' Bit. Mat. Res. 9,990

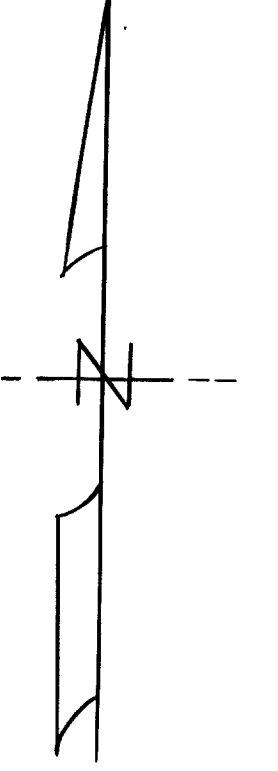
SF-5-106B(2) (1952) 24' G.E. & Gran. 4,990  
 RTED-TRFD TO RTE F BY 71-007-71-1(12) 34' G.E. & 22'-P.C.C.-0.184  
 Marked Rte F Marked Bus. 71 0.003 Comm. Act. 11-69 0.181

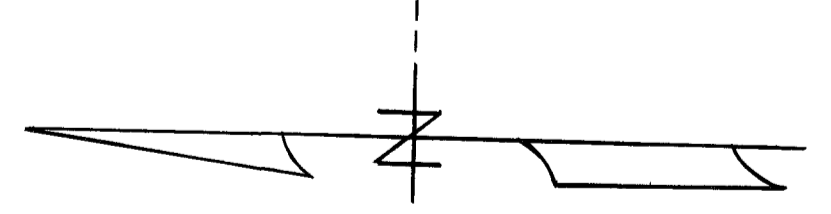
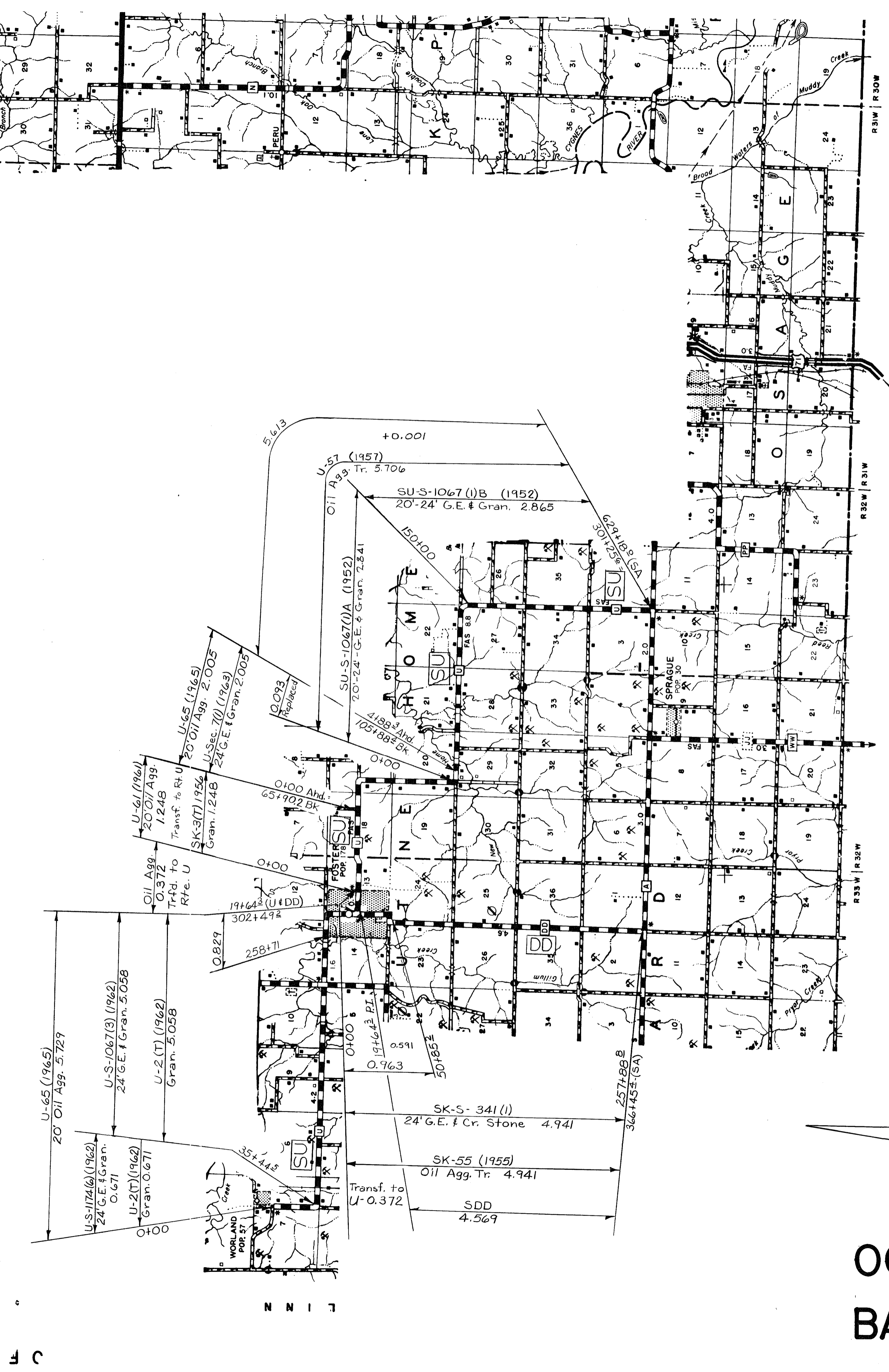
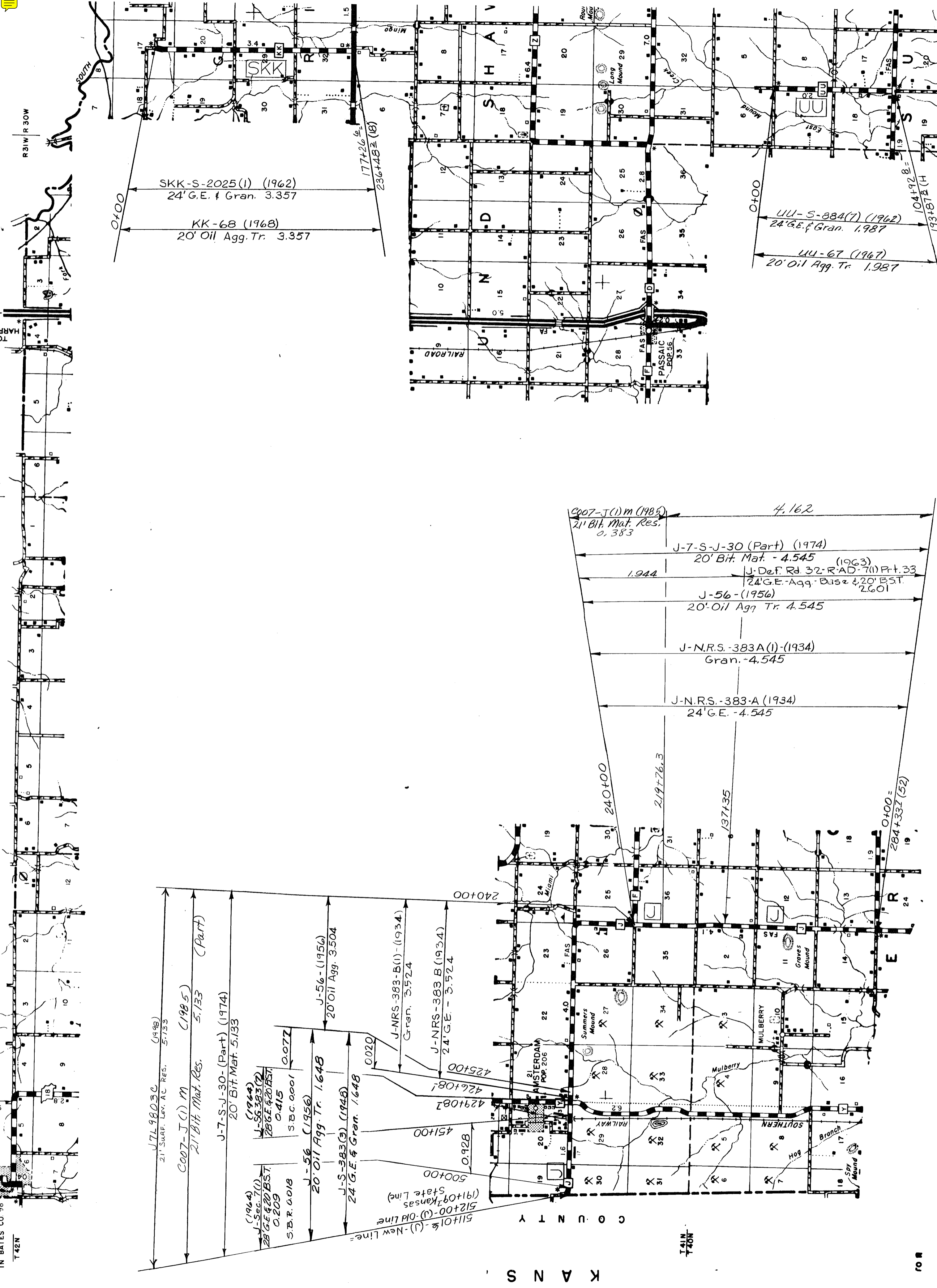
22' LIME (OLD 71) 0.000(F)  
 24' LIME (OLD 71) 0.000(F)  
 24' LIME (NEW 71) 0.000(F)

0.814 0.133 2.165 0.067 4.458 0.223 8.684  
 70' Surf. Lev. A.C. Res. 70' Surf. Lev. A.C. Res. 70' Surf. Lev. A.C. Res. 70' Surf. Lev. A.C. Res. 70' Surf. Lev. A.C. Res. 70' Surf. Lev. A.C. Res.  
 16.544 580 0.001 (20)

007  
BATES

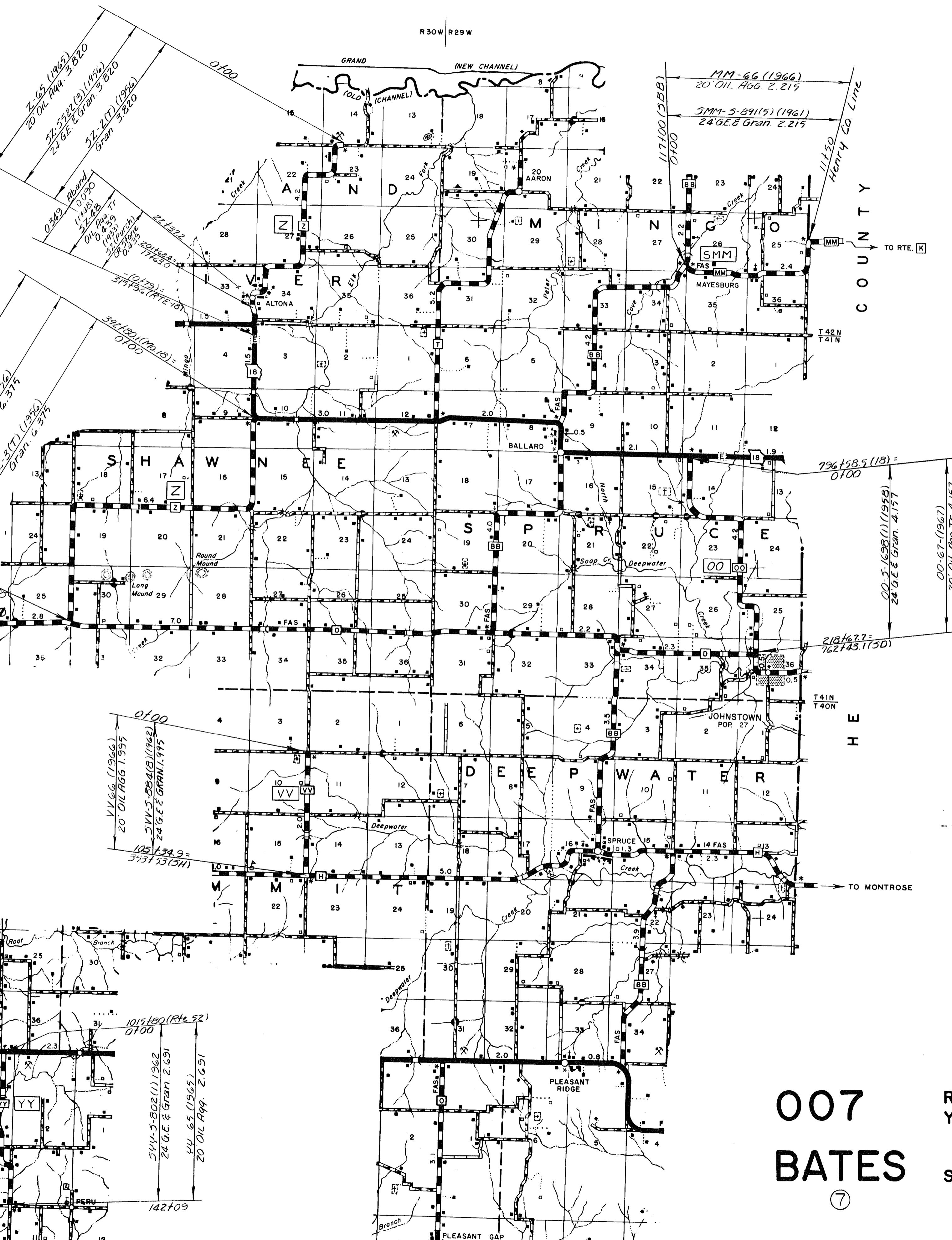
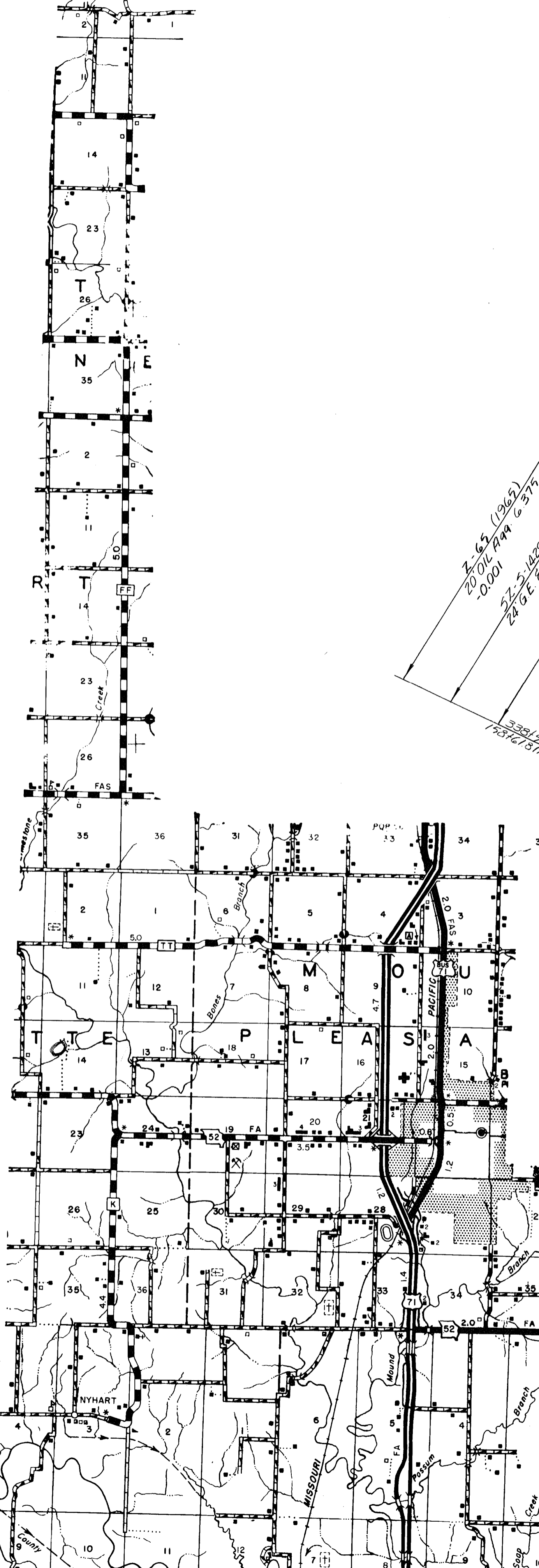
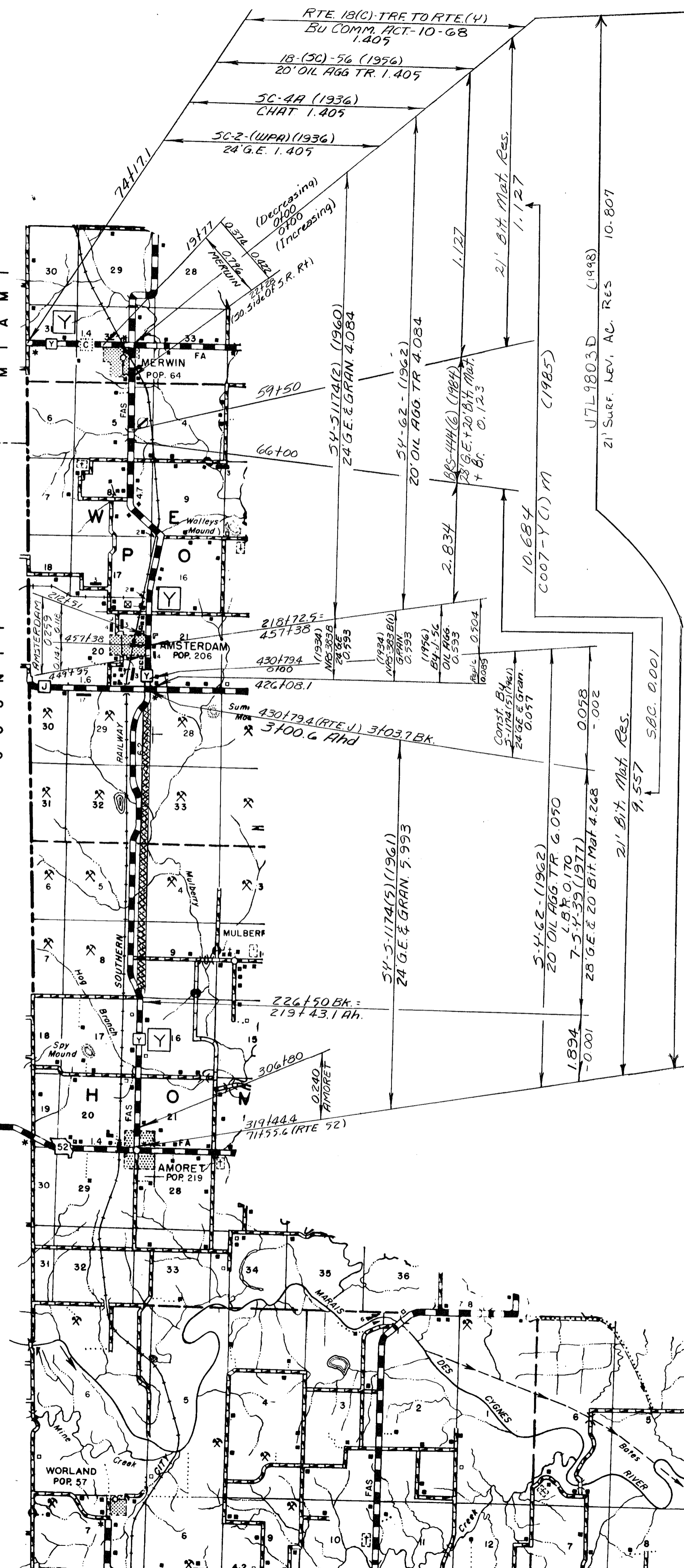
ROUTE: F  
71 Bus.(Part)  
18 (Part)  
SHEET 6 OF 11





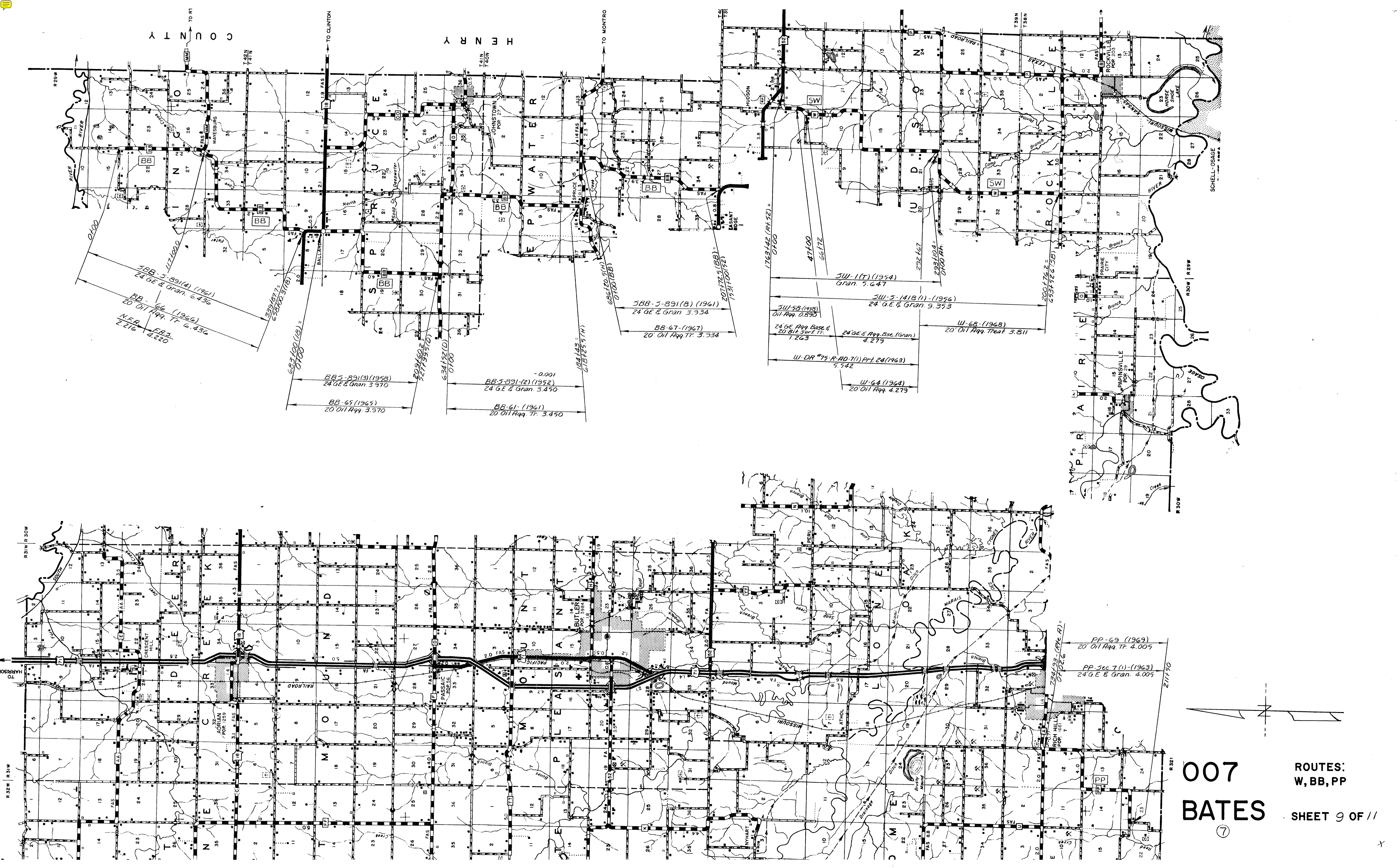
007  
BATES  
⑦

ROUTES:  
J, U, DD, KK, UU  
SHEET 7 OF 11



007  
**BATES**  
 ROUTES:  
 Y, Z, YY, MM, OO, VV  
 SHEET 8 OF 11

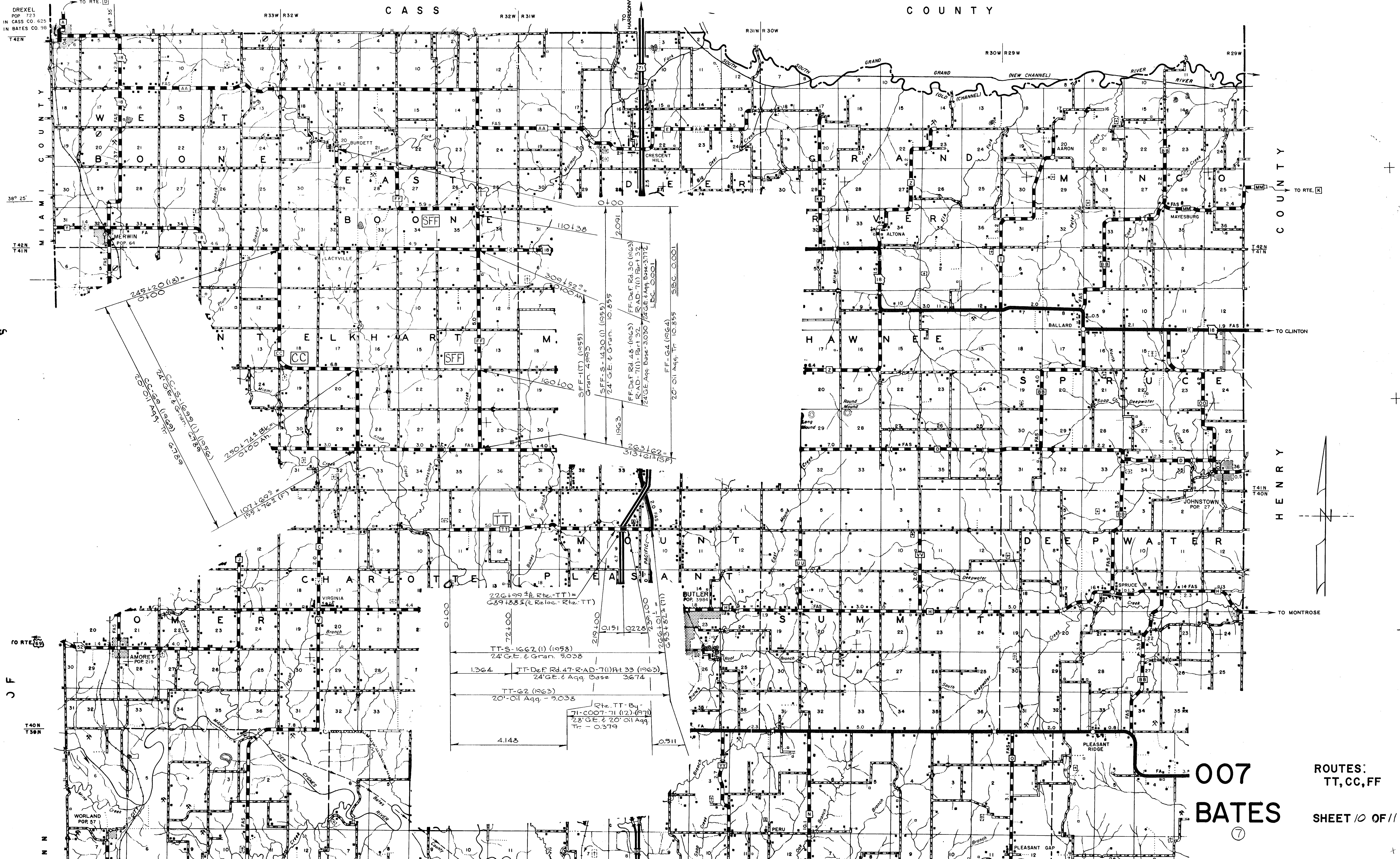




007  
BATES

ROUTES:  
W, BB, PP  
SHEET 9 OF 11

7



DREXEL POP 723  
IN CASS CO. 625  
IN BATES CO. 98

T 42N  
38° 25'

T 42N  
T 41N

TO RTE. D

TO RTE. K

TO CLINTON

TO MONROSE

TO RTE. 63

T 40N  
T 39N

007  
BATES  
⑦

ROUTES:  
TT, CC, FF

SHEET 10 OF 11

245+20 (18) =  
0+00

250+74.4 Bk. 2  
0+00 An.

CC-5-1692 (1) (1956)  
24' G.E. & Gran. 6-7-59

107+69.8 =  
159+76.2 (F)

309+92.9 =  
0+00 An.

110+38

160+00

SFF-IT (1955)  
Gran. 4.995

SFF-S-1430 (1) (1955)  
24' G.E. & Gran. 10.855

263+62 =  
318+12 (SF)

20' Oil Agg. Tr. 10.855

SIBC. 0.001

FF-De F Rd. 48 (1963) / FF-De F Rd. 30 (1963)  
R-AD-7 (1) - Part 32 / R-AD-7 (1) Part 32  
24' GE. & Agg. Base. 3.030 / 24' GE. & Agg. Base. 3.030

226+99.4 (Rte. TT) =  
639+88.5 (R. Reloc. Rte. TT)

72+00

TT-S-1662 (1) (1958)  
24' G.E. & Gran. 5.038

1.364

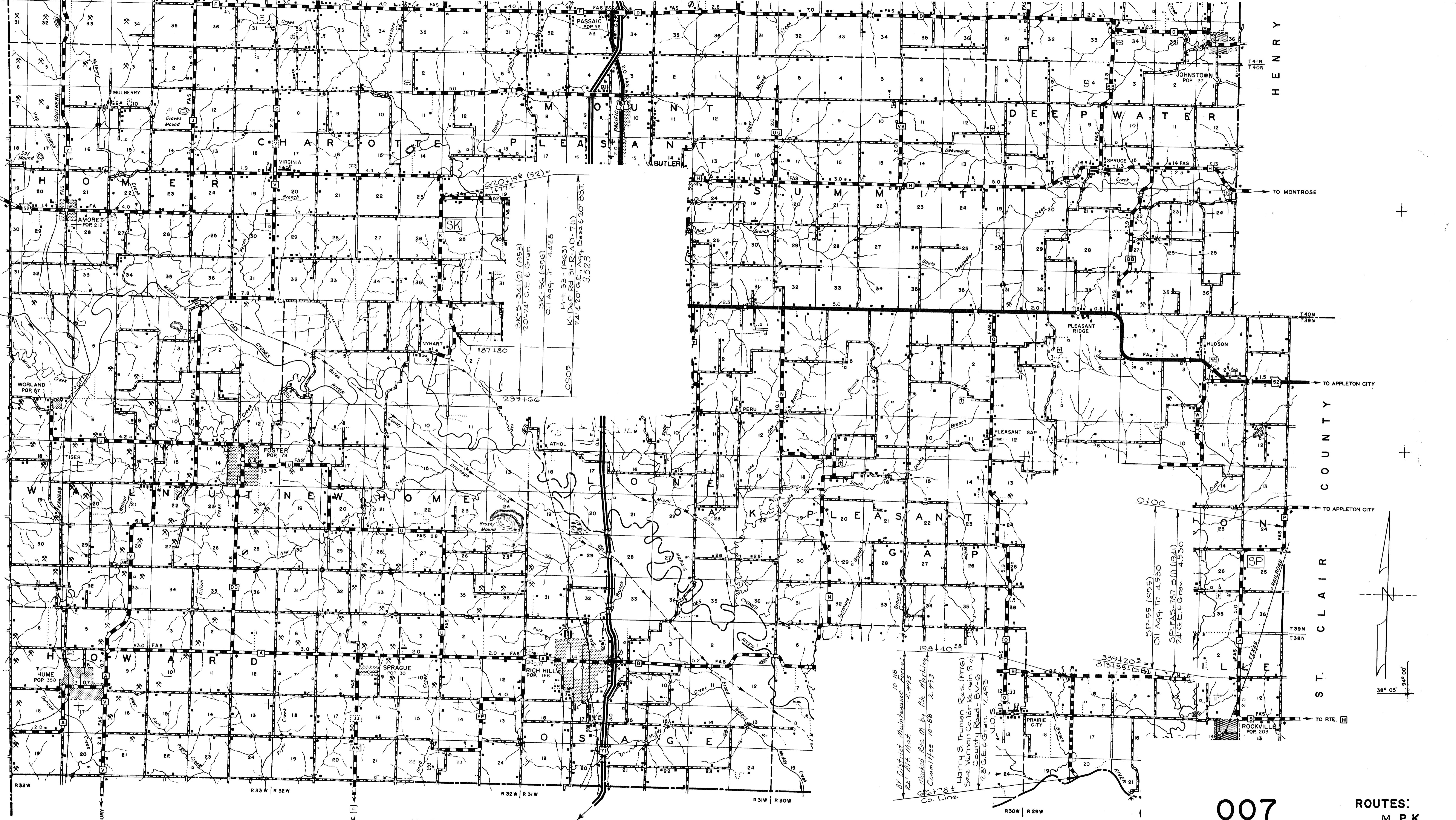
TT-De F Rd. 47 - R-AD-7 (1) Rt 33 (1963)  
24' GE. & Agg. Base 3.674

TT-62 (1963)  
20' Oil Agg. - 5.038

4.143

Rte. TT-By-  
71-C007-71 (12) (1971)  
28' GE. & 20' Oil Agg.  
Tr. - 0.379

0.511



MULBERRY  
 AMORET POP. 219  
 WORLAND POP. 47  
 TIGER  
 FOSTER POP. 178  
 HUME POP. 350  
 SPRAGUE POP. 30  
 RICH HILL POP. 166  
 JOHNSTOWN POP. 27  
 PLEASANT GAP  
 HUDSON  
 PLEASANT RIDGE  
 PERU  
 SPRUCE  
 ROCKVILLE POP. 203

T. 41N  
 T. 40N  
 T. 39N  
 T. 38N  
 T. 37N  
 T. 36N  
 T. 35N  
 T. 34N  
 T. 33N  
 T. 32N  
 T. 31N  
 T. 30N  
 T. 29N  
 T. 28N  
 T. 27N  
 T. 26N  
 T. 25N  
 T. 24N  
 T. 23N  
 T. 22N  
 T. 21N  
 T. 20N  
 T. 19N  
 T. 18N  
 T. 17N  
 T. 16N  
 T. 15N  
 T. 14N  
 T. 13N  
 T. 12N  
 T. 11N  
 T. 10N  
 T. 9N  
 T. 8N  
 T. 7N  
 T. 6N  
 T. 5N  
 T. 4N  
 T. 3N  
 T. 2N  
 T. 1N

R. 33W  
 R. 32W  
 R. 31W  
 R. 30W  
 R. 29W  
 R. 28W  
 R. 27W  
 R. 26W  
 R. 25W  
 R. 24W  
 R. 23W  
 R. 22W  
 R. 21W  
 R. 20W  
 R. 19W  
 R. 18W  
 R. 17W  
 R. 16W  
 R. 15W  
 R. 14W  
 R. 13W  
 R. 12W  
 R. 11W  
 R. 10W  
 R. 9W  
 R. 8W  
 R. 7W  
 R. 6W  
 R. 5W  
 R. 4W  
 R. 3W  
 R. 2W  
 R. 1W

220192 (52)  
 SK  
 SK-S-3411(2) (1953)  
 20'-24' G.E. & Gran.  
 Oil Ag. Tr. 4.428  
 Pat. 33- (1923)  
 K-Def. Rd. 31-PA.D-7(1)  
 24'-70' G.E. & Gran. Base & 20' B.S.T.  
 3.523  
 187+80  
 239+66  
 0909  
 0010  
 SP-55 (1955)  
 Oil Ag. Tr. 4.530  
 SP-EAS-787 B.U. (1941)  
 24' G.E. & Gran. 4.950  
 339+203  
 813+351 (55)  
 198+40  
 10-88  
 22-017 Mat. 2-493  
 Marked Rte. M by Rte. Marking  
 Committee 10-88 2-493  
 Co. Line  
 Harry S. Truman Res. (1916)  
 See Vernon Co. for Exam. P. of  
 County Road - BV-G  
 7.8' G.E. & Gran. 2.493  
 N.O.S.  
 38° 05' 34" 00'

007  
 BATES  
 ROUTES:  
 M, P, K  
 SHEET // OF //  
 7