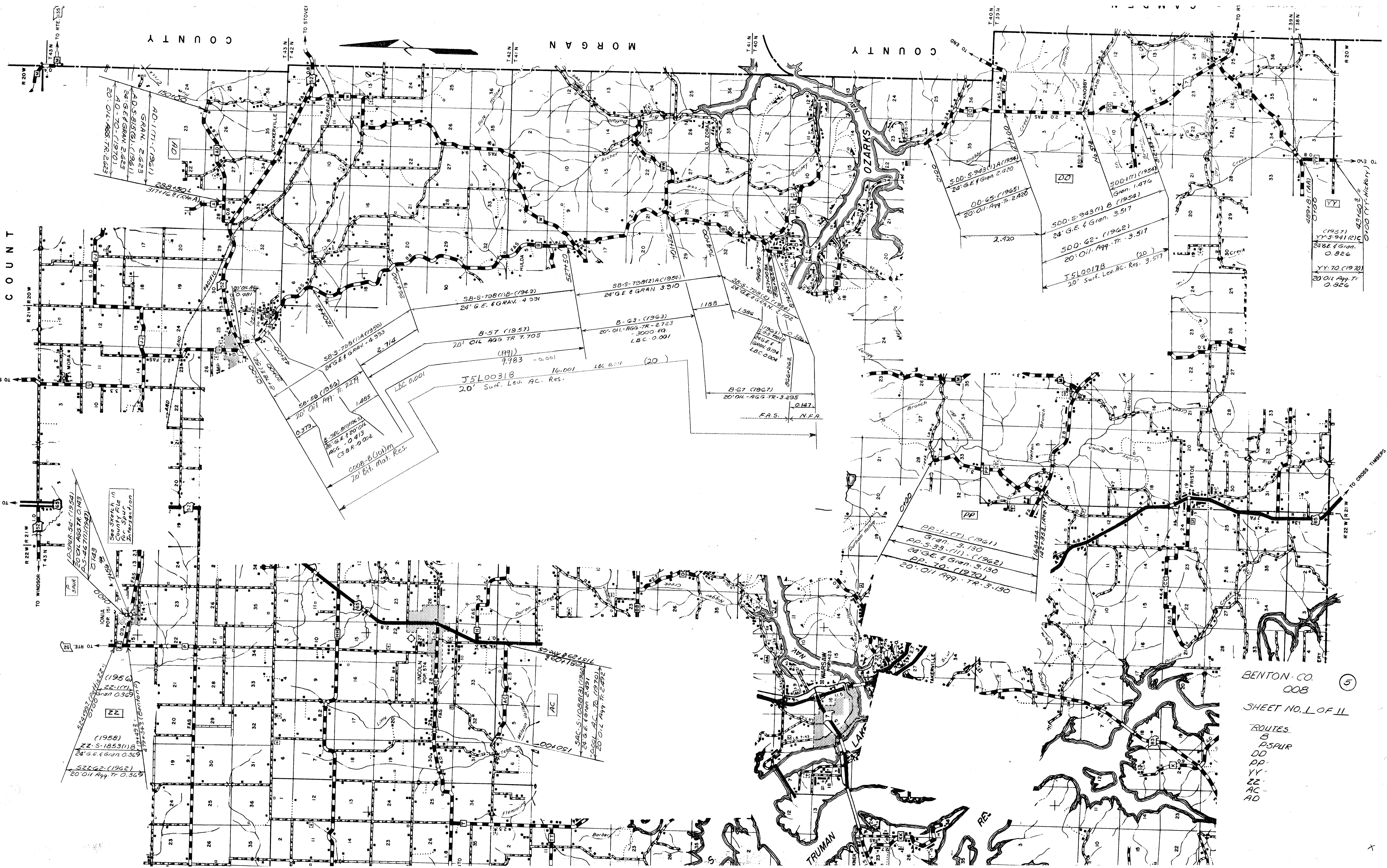


COUNTY

MORGAN COUNTY

COUNTY

COUNT



BENTON-CO. 008 (5)
 SHEET NO. 1 OF 11
 ROUTES
 B-PSPIR
 DD
 PP
 YY
 ZZ
 AC
 AD

AD-171 (1961)
 GRAN. 2.623
 AD-S-815 (G) (1961)
 24' G.E. & GRAN. 2.623
 AD-70 (1970)
 20' OIL AGG. TR. 2.623

SB-S-798 (1) A (1950)
 24' G.E. & GRAN. 4.533
 2.714
 SB-SB (1956)
 20' OIL AGG. TR. 2.274
 1.485
 SEC. 8, 19, 20, 21, 22, 23, 24, 25, 26, 27, 28, 29, 30, 31, 32, 33, 34, 35, 36
 AGG. 2.20 OIL
 RES. 0.913
 CS BR. 0.002
 COOB-B (00) M
 20' Bnt. Mat. Res.

J5L00318
 20' Surf. Lev. AC. Res.
 16.001
 9.983 - 0.001
 L.C. 0.001 (20)

SB-S-708 (2) A (1924)
 24' G.E. & GRAN. 3.310

B-63 (1963)
 20' OIL AGG. TR. 2.723
 3000.00
 L.B.C. 0.001

B-67 (1967)
 20' OIL AGG. TR. 3.295
 0.147
 F.A.S. N.F.A.

BB-1 (1) (1961)
 Gran. 3.130
 AA-S-33 (1) (1962)
 24' G.E. & GRAN. 3.130
 PP-10 (1970)
 20' OIL AGG. TR. 3.130

DD-65 (1965)
 20' OIL AGG. TR. 2.420
 2.420
 SDD-S-943 (1) A (1954)
 24' G.E. & GRAN. 2.420
 SDD-S-943 (1) B (1954)
 Gran. 1.476
 24' G.E. & GRAN. 3.517
 SDD-62 (1962)
 20' OIL AGG. TR. 3.517
 J5L0017B (20)
 20' Surf. Lev. AC. Res. 3.517

(1957)
 YY-S-941 (2) C
 24' G.E. & GRAN.
 0.826
 YY-70 (1970)
 20' OIL AGG. TR.
 0.826
 431603
 0700 (YY-Hickory)

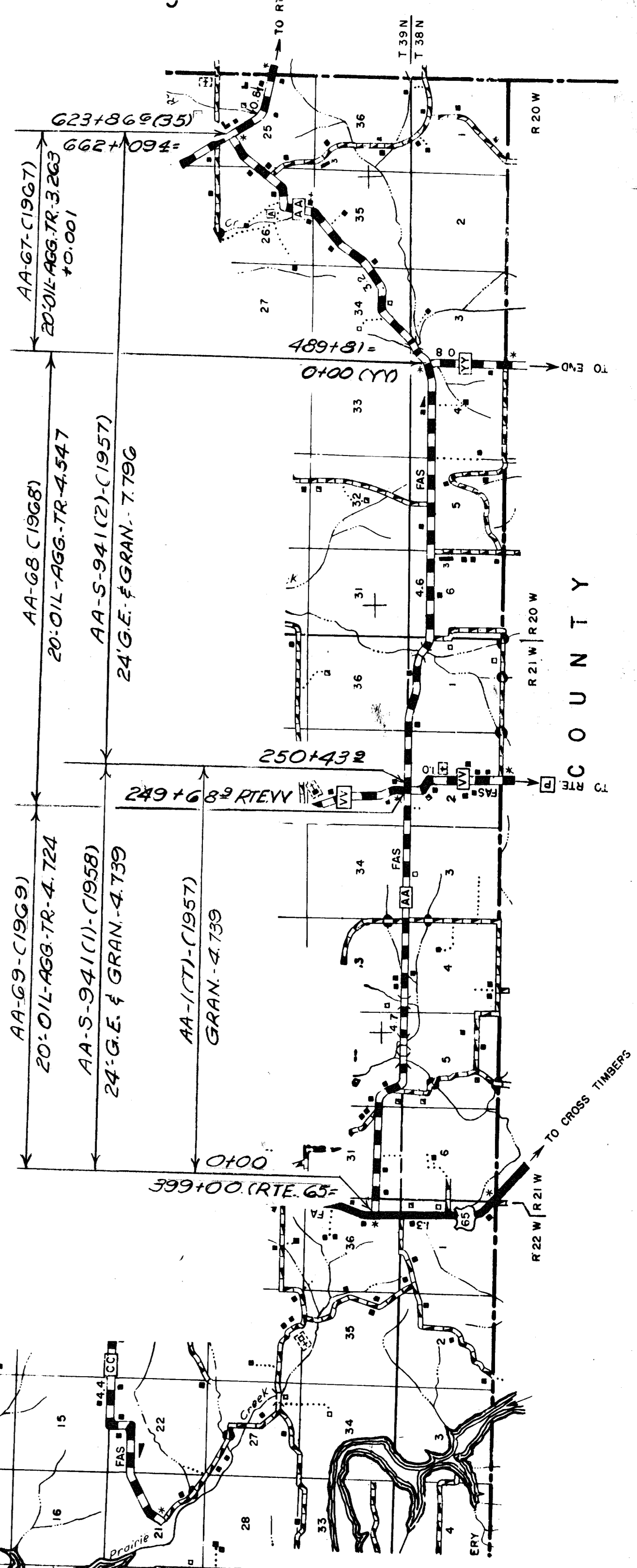
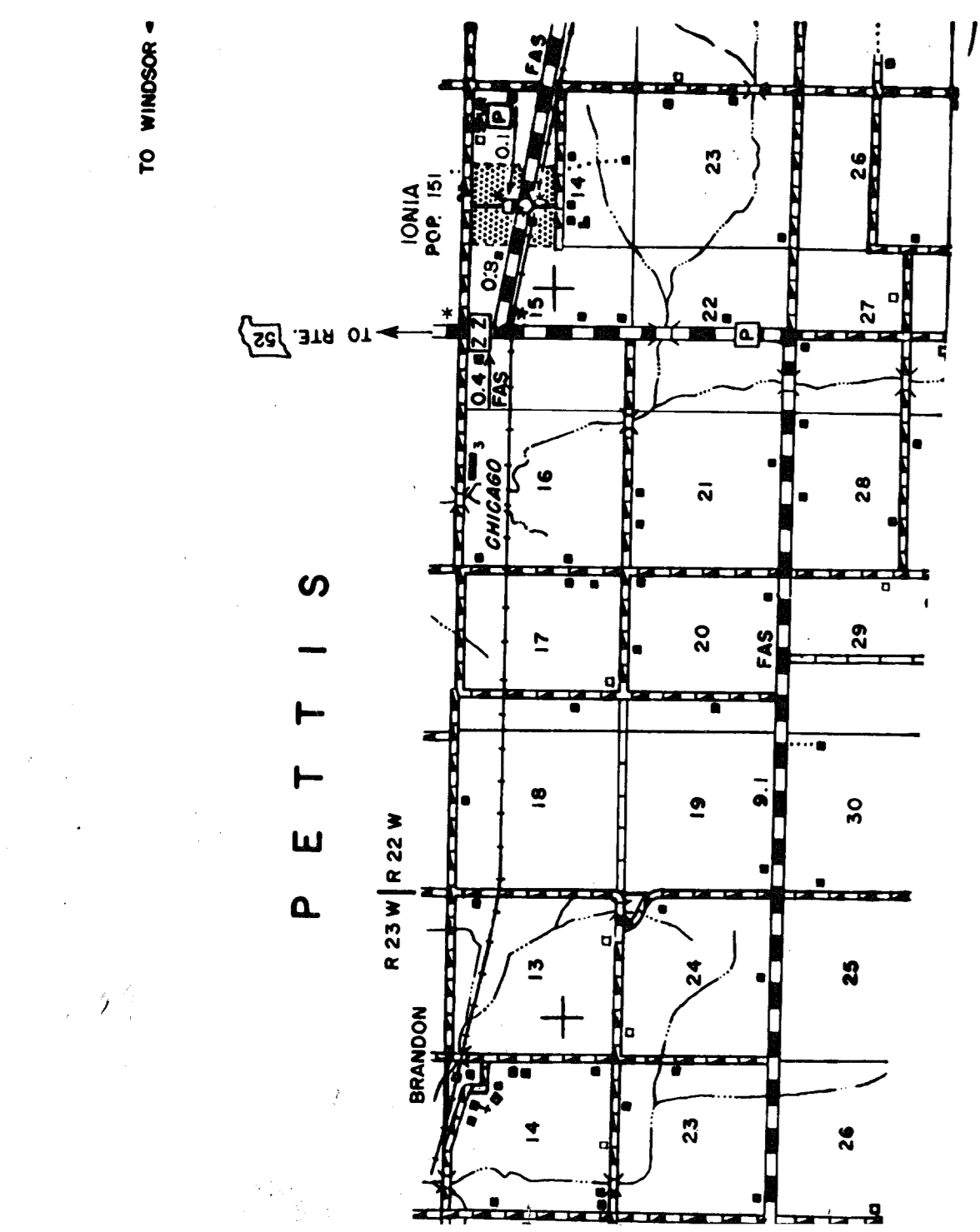
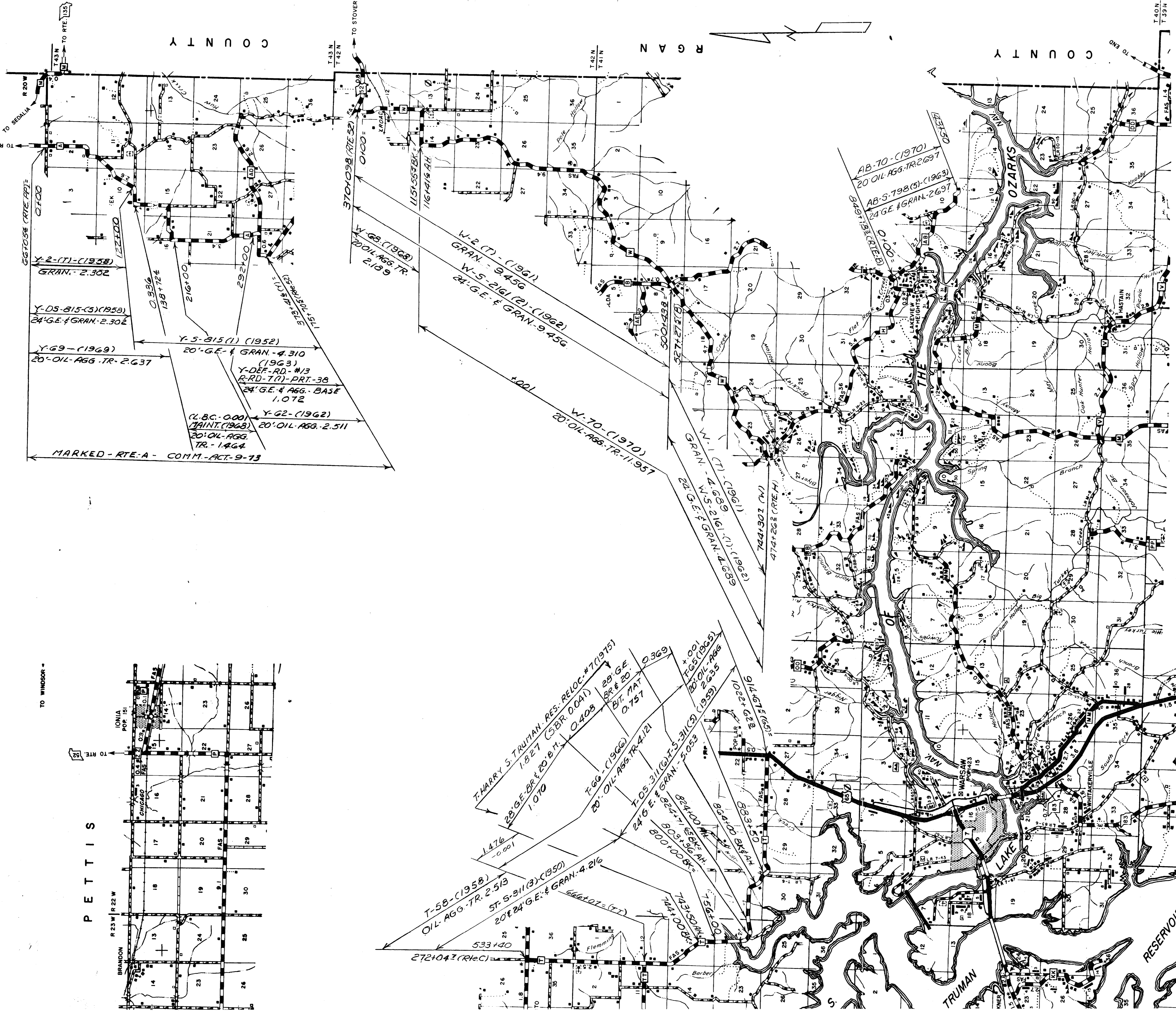
(1956)
 ZZ-107
 Gran. 0.369
 (1958)
 ZZ-S-1853 (1) B
 24' G.E. & GRAN. 0.369
 ZZ-62 (1962)
 20' OIL AGG. TR. 0.369

SAC-S-1088 (1) (1954)
 24' G.E. & GRAN. 2.491
 2000 AC. TR. (1970)
 20' OIL AGG. TR. 2.492

COUNTY

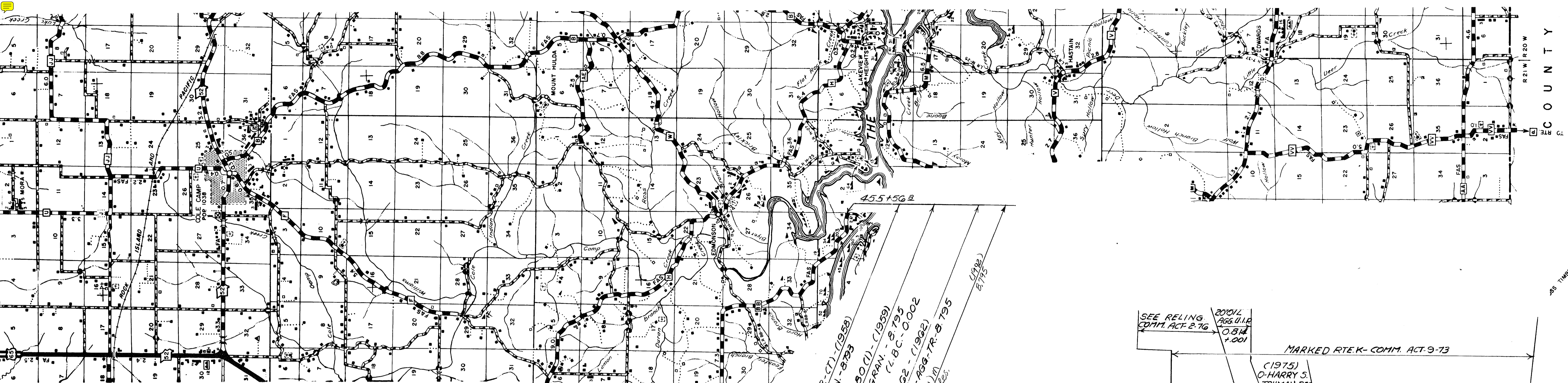
R G A N COUNTY

COUNTY

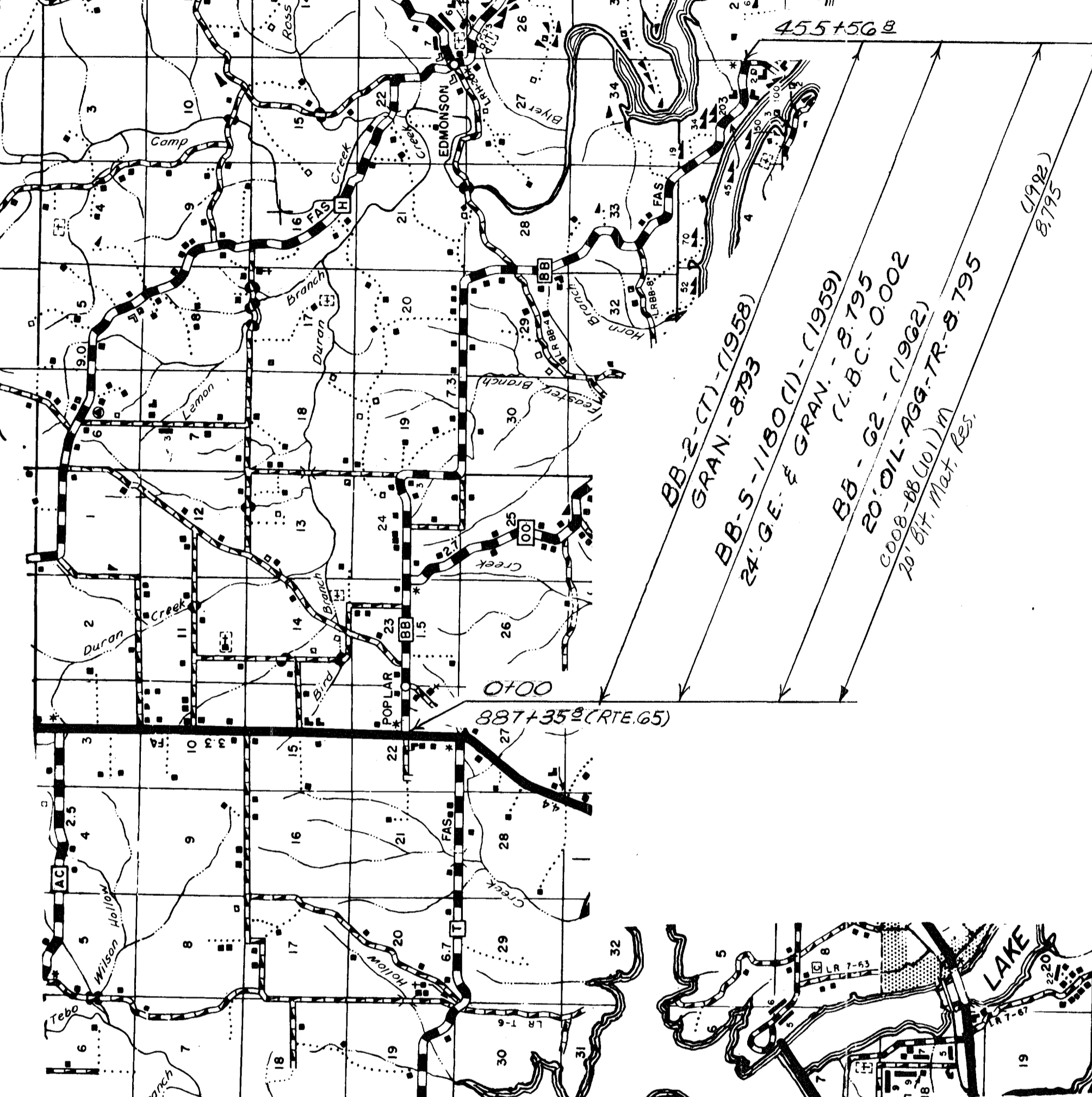


ROUTE
A
T
W
AA
AB

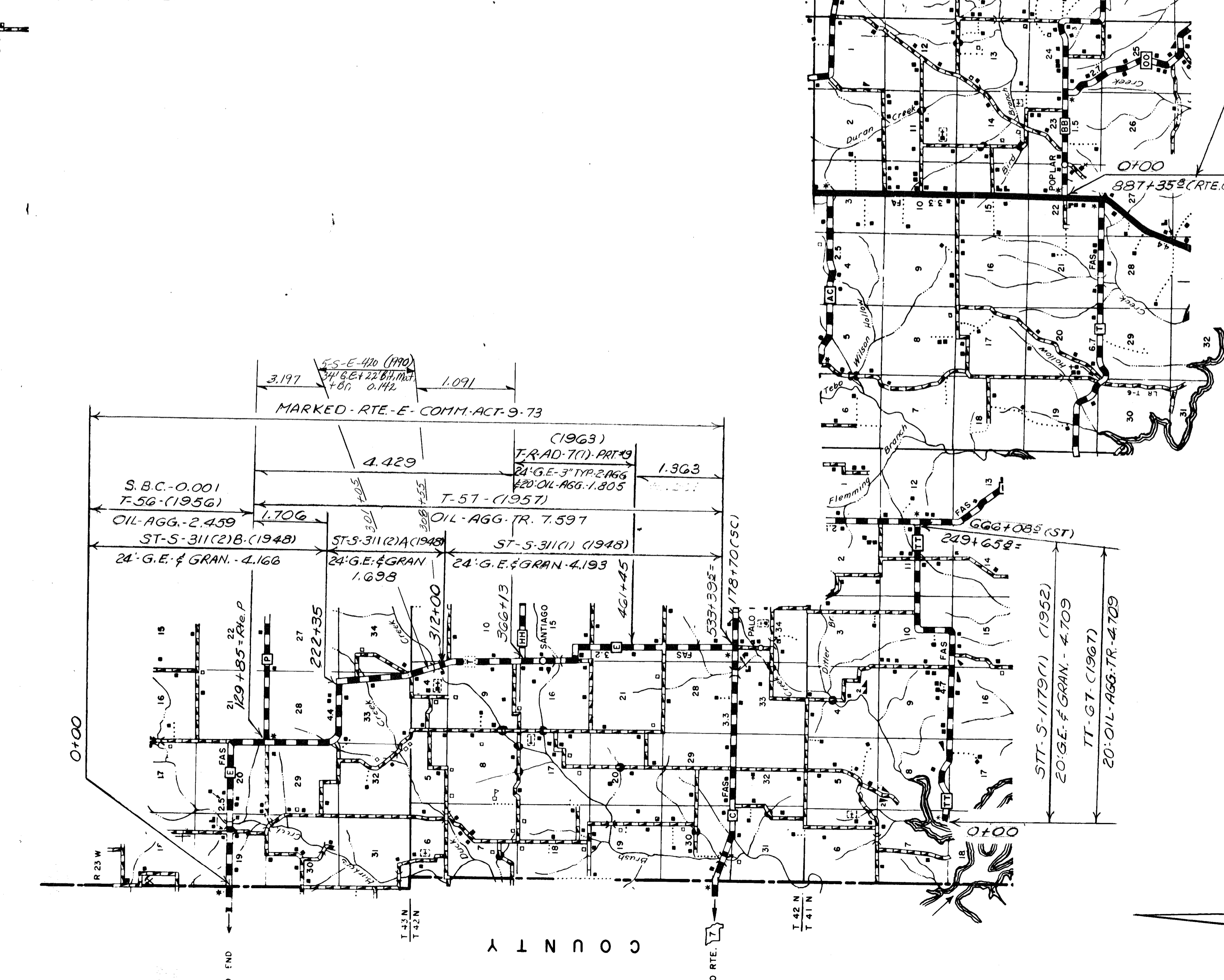
008 SHEET 3 OF 11
BENTON



BENTON COUNTY

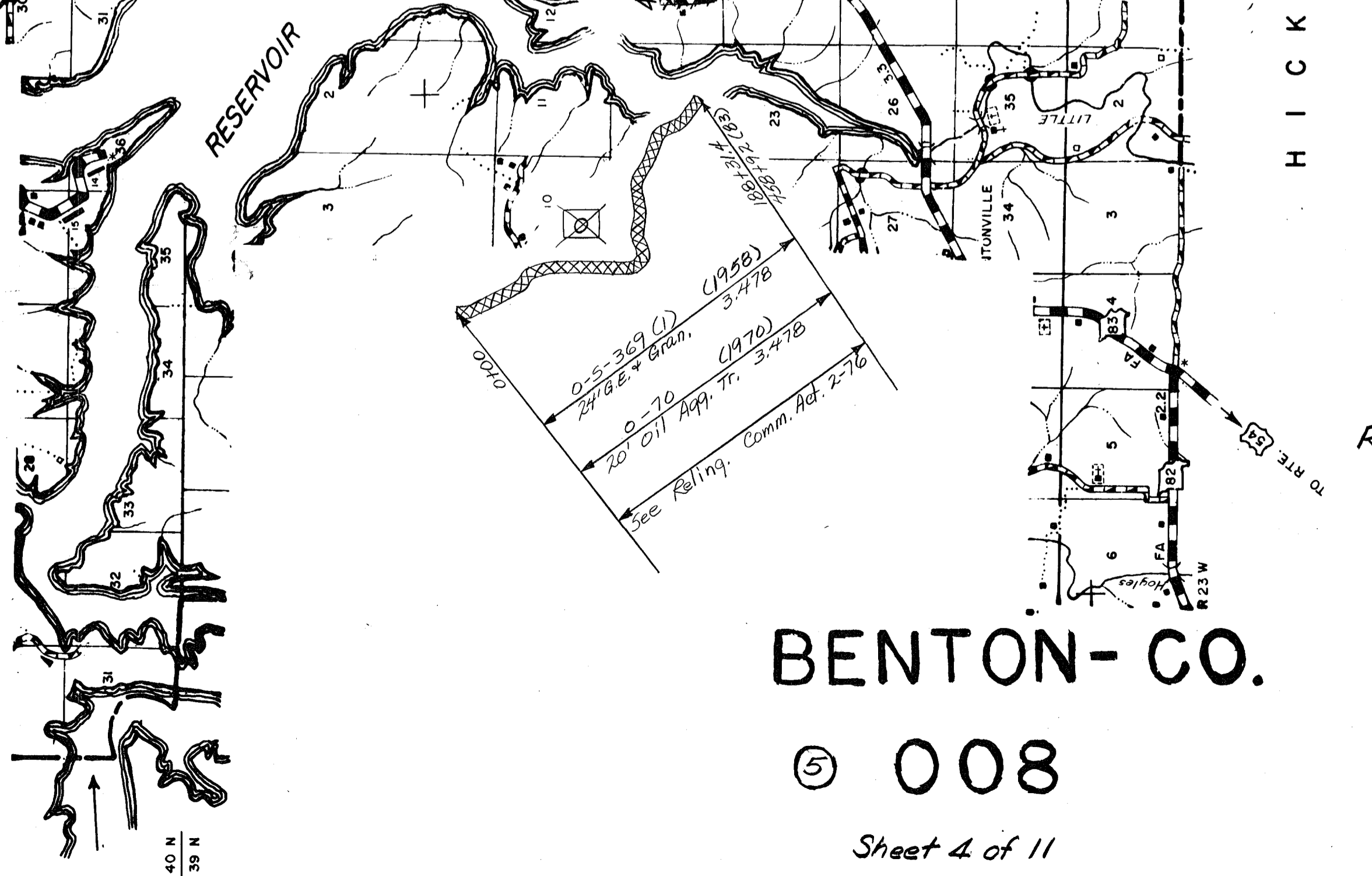
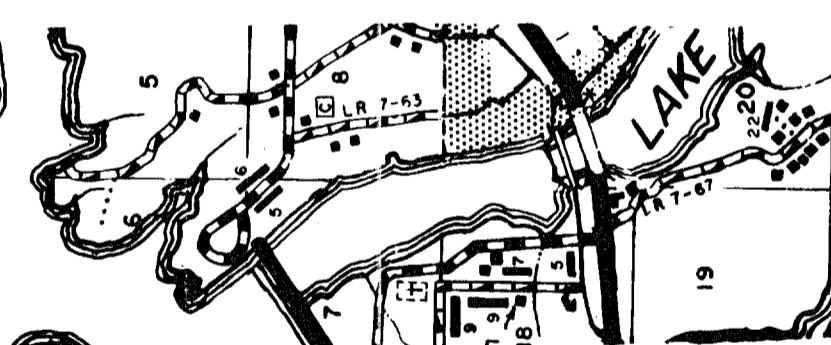
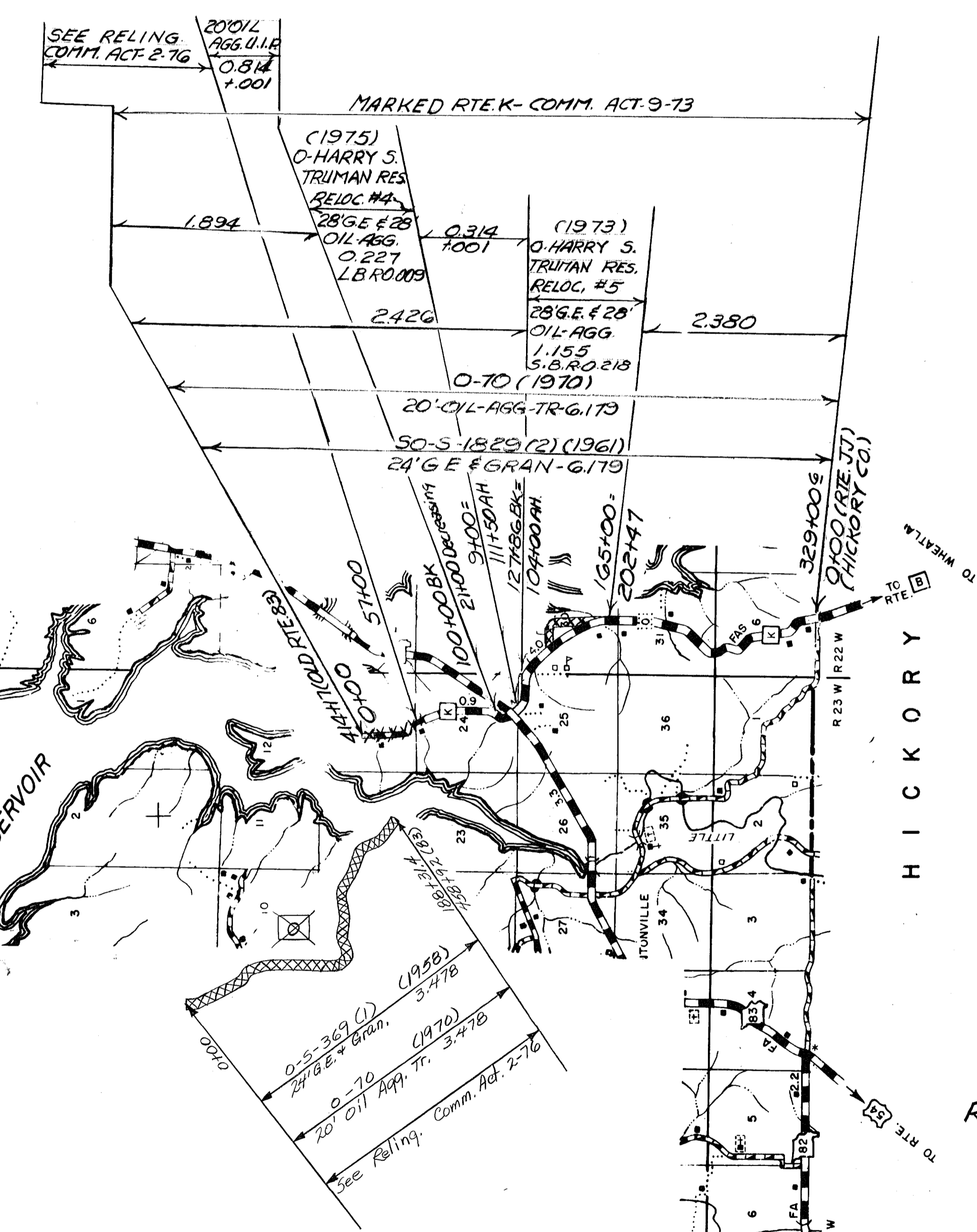


55 TIMBERS



HICKORY

ROUTES
E
K
BB
TT
o Historical

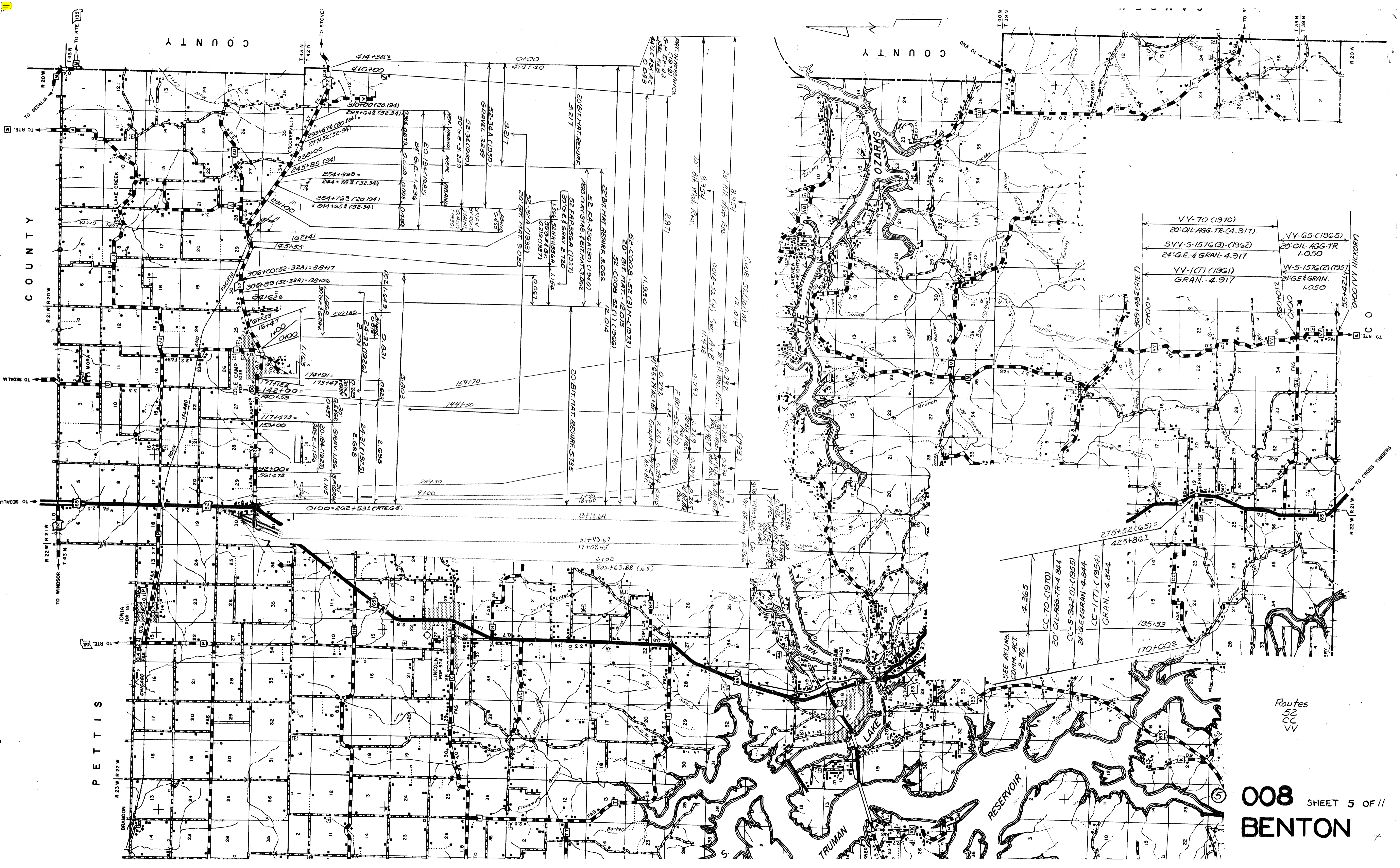


BENTON-CO.

008

Sheet 4 of 11

COUNTY



COUNTY

COUNTY

COUNTY

PETTIS

008 SHEET 5 OF 11
BENTON

VV-70 (1970)
20' OIL AGG-TR. (4.917)

SVV-S-1576 (3) (1962)
24' G.E. & GRAN. 4.917

VV-1CT (1961)
GRAN. 4.917

VV-65 (1965)
20' OIL AGG-TR. 1.050

VV-S-1576 (2) (1957)
24' G.E. & GRAN. 1.050

369+483 (RIET)
0100 =

260+01Z
0100

55+421
0100 (VV HICKORY)

SEE RELING
COMM. ACT
2-78

4.965

CC-70 (1970)
20' OIL AGG-TR. 4.844

CC-S-9420 (1955)
24' G.E. & GRAN. 4.844

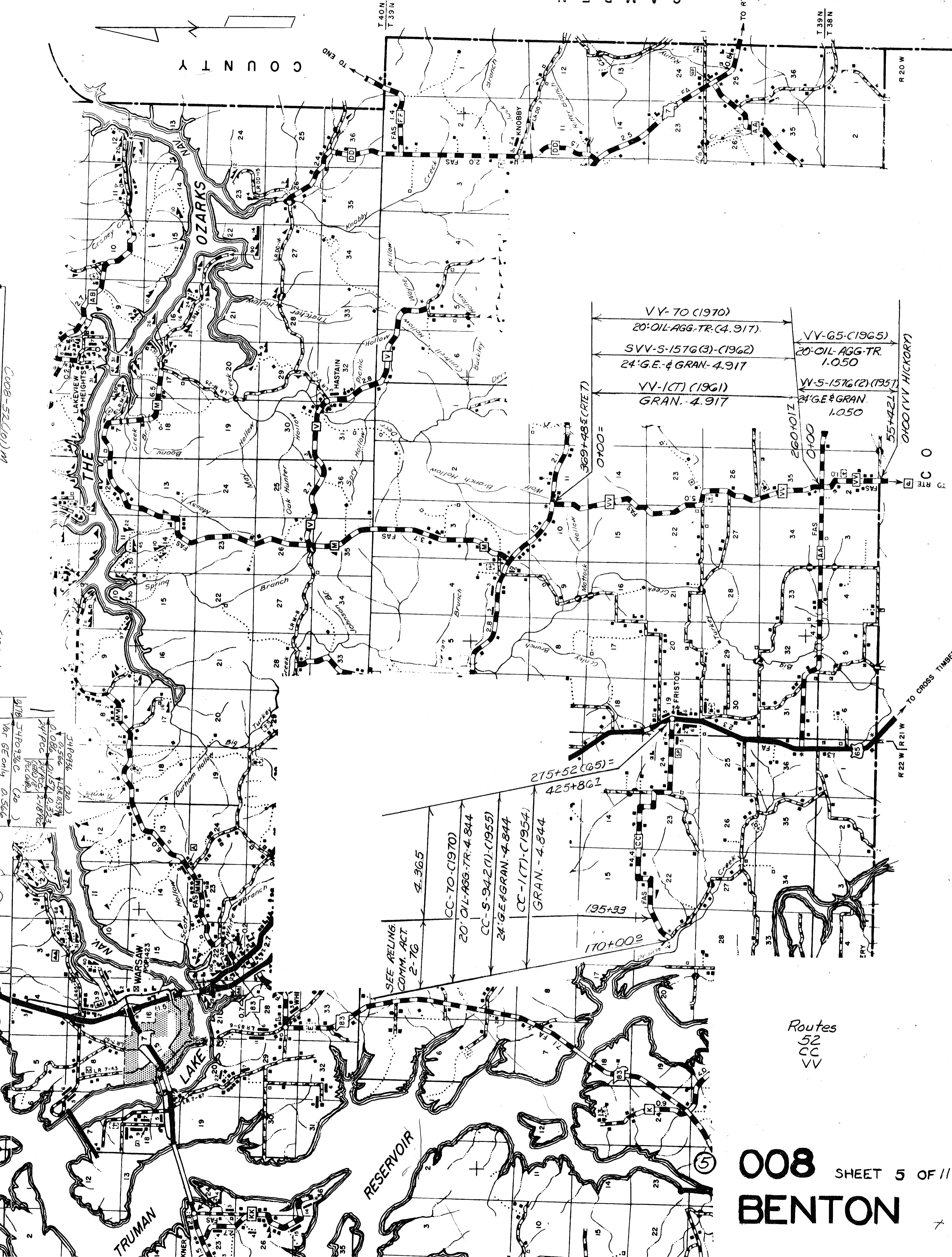
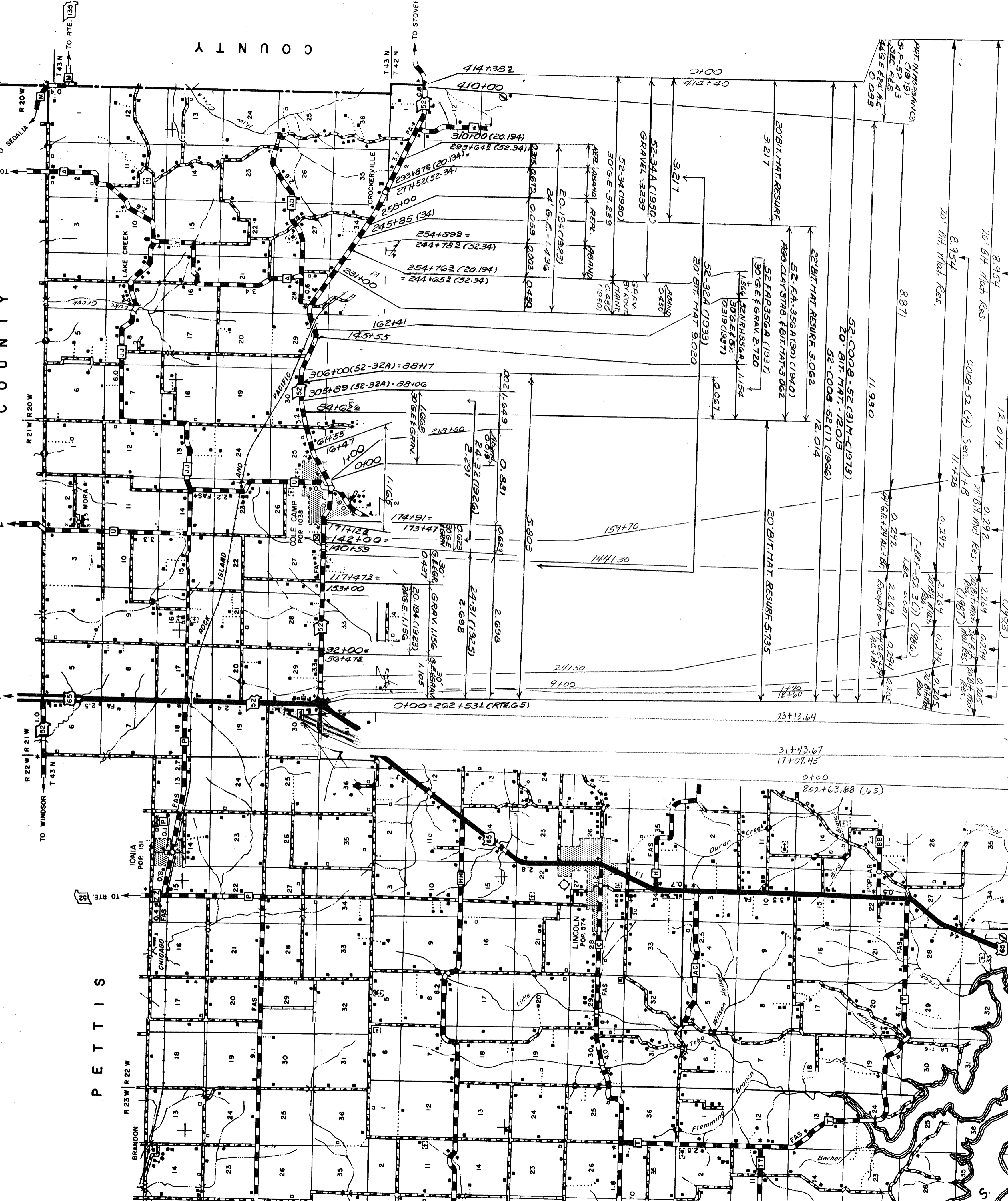
CC-1CT (1954)
GRAN. 4.844

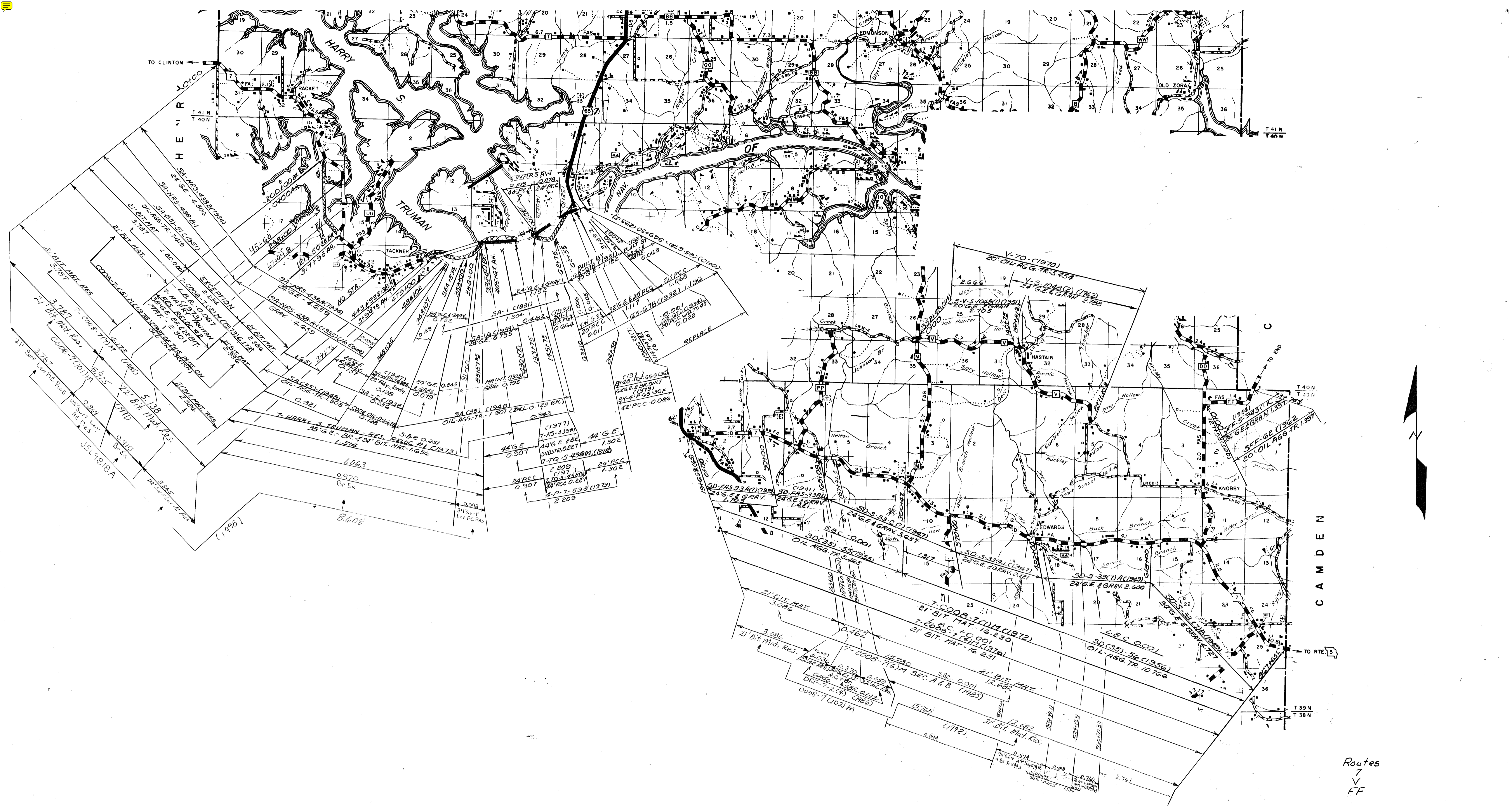
215+52 (65) =
425+861

195+33

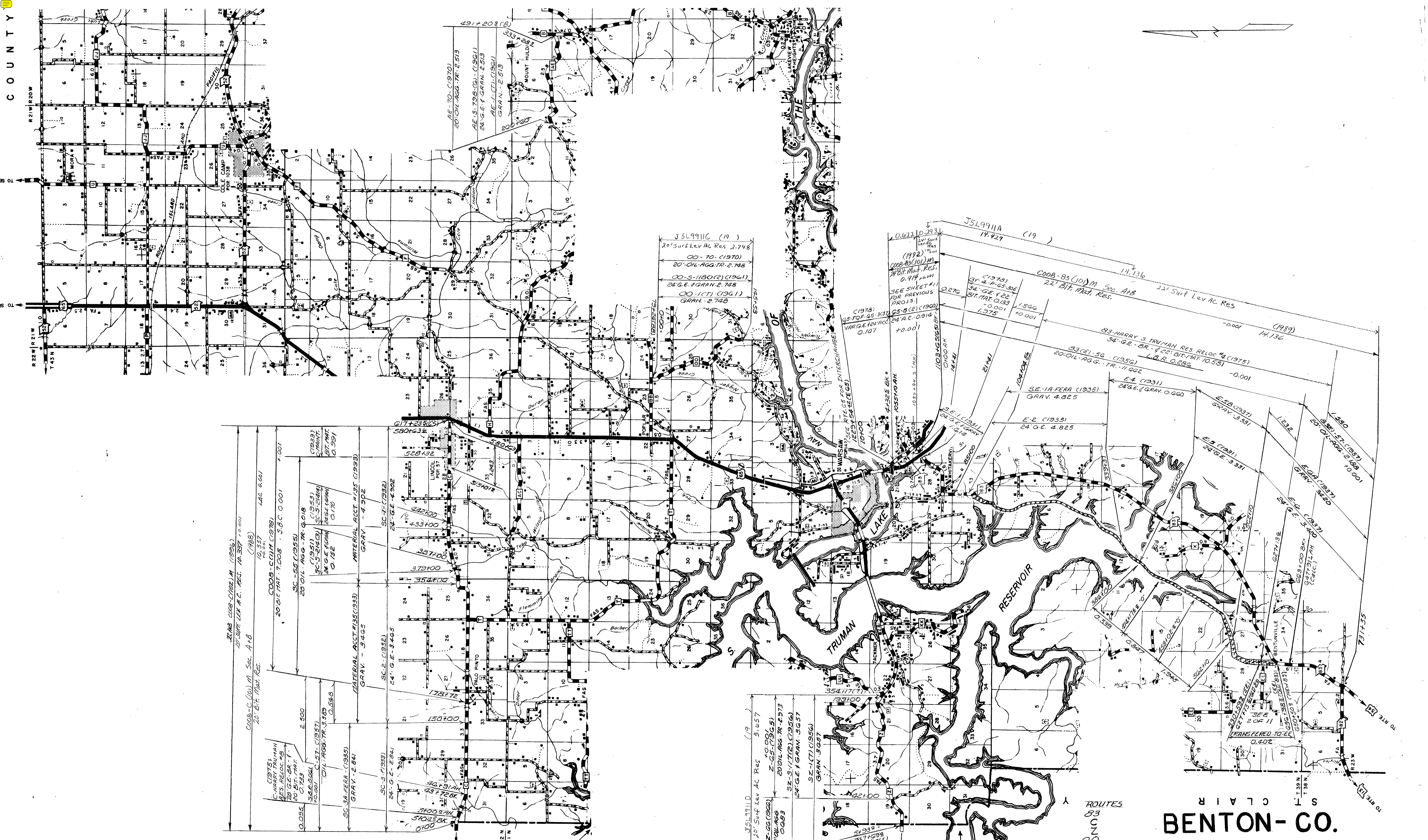
170+009

Routes
52
CC
VV





Routes
 7
 V
 FF



R 22W R 21W
T 43N

R 22W R 21W
T 43N

20' OIL AGG. TR. 2.513
AE-S. 795 (1961)
24' G.E. + GRAN. 2.513
AE-L (1961)
GRAN. 2.513

32' AB. COOB-C (1922) M (1926)
20' OIL AGG. TR. RES. 10.337
(1988)
COOB-C (101) M Sec. A+B
20' BIT. Mat. Res.
10.337
148.000
COOB-C-CUM (1978)
20' OIL AGG. TR. 7.008
S.B.C. 0.001
SC-55 (1955)
20' OIL AGG. TR. 9.018
(1951)
SC-S-214(C)
24' G.E. + GRAN. 0.170
C. 152
MATERIAL ACCT. #135 (1953)
GRAY - 4.902
SC-2 (1932)
24' G.E. 4.902
SC-3 (1933)
24' G.E. 3.405
MATERIAL ACCT. #135 (1933)
GRAY - 3.405
SC-3A (1933)
24' G.E. 2.841
SC-3B (1933)
24' G.E. 2.841
SC-3C (1933)
24' G.E. 2.841
SC-3D (1933)
24' G.E. 2.841
SC-3E (1933)
24' G.E. 2.841
SC-3F (1933)
24' G.E. 2.841
SC-3G (1933)
24' G.E. 2.841
SC-3H (1933)
24' G.E. 2.841
SC-3I (1933)
24' G.E. 2.841
SC-3J (1933)
24' G.E. 2.841
SC-3K (1933)
24' G.E. 2.841
SC-3L (1933)
24' G.E. 2.841
SC-3M (1933)
24' G.E. 2.841
SC-3N (1933)
24' G.E. 2.841
SC-3O (1933)
24' G.E. 2.841
SC-3P (1933)
24' G.E. 2.841
SC-3Q (1933)
24' G.E. 2.841
SC-3R (1933)
24' G.E. 2.841
SC-3S (1933)
24' G.E. 2.841
SC-3T (1933)
24' G.E. 2.841
SC-3U (1933)
24' G.E. 2.841
SC-3V (1933)
24' G.E. 2.841
SC-3W (1933)
24' G.E. 2.841
SC-3X (1933)
24' G.E. 2.841
SC-3Y (1933)
24' G.E. 2.841
SC-3Z (1933)
24' G.E. 2.841

20' OIL AGG. TR. 2.748
00-70 (1970)
00-S-1180 (2) (1961)
24' G.E. + GRAN. 2.748
00-1 (17) (1961)
GRAN. 2.748

20' OIL AGG. TR. 2.748
00-70 (1970)
00-S-1180 (2) (1961)
24' G.E. + GRAN. 2.748
00-1 (17) (1961)
GRAN. 2.748

20' OIL AGG. TR. 2.748
00-70 (1970)
00-S-1180 (2) (1961)
24' G.E. + GRAN. 2.748
00-1 (17) (1961)
GRAN. 2.748

20' OIL AGG. TR. 2.748
00-70 (1970)
00-S-1180 (2) (1961)
24' G.E. + GRAN. 2.748
00-1 (17) (1961)
GRAN. 2.748

20' OIL AGG. TR. 2.748
00-70 (1970)
00-S-1180 (2) (1961)
24' G.E. + GRAN. 2.748
00-1 (17) (1961)
GRAN. 2.748

20' OIL AGG. TR. 2.748
00-70 (1970)
00-S-1180 (2) (1961)
24' G.E. + GRAN. 2.748
00-1 (17) (1961)
GRAN. 2.748

20' OIL AGG. TR. 2.748
00-70 (1970)
00-S-1180 (2) (1961)
24' G.E. + GRAN. 2.748
00-1 (17) (1961)
GRAN. 2.748

20' OIL AGG. TR. 2.748
00-70 (1970)
00-S-1180 (2) (1961)
24' G.E. + GRAN. 2.748
00-1 (17) (1961)
GRAN. 2.748

20' OIL AGG. TR. 2.748
00-70 (1970)
00-S-1180 (2) (1961)
24' G.E. + GRAN. 2.748
00-1 (17) (1961)
GRAN. 2.748

20' OIL AGG. TR. 2.748
00-70 (1970)
00-S-1180 (2) (1961)
24' G.E. + GRAN. 2.748
00-1 (17) (1961)
GRAN. 2.748

20' OIL AGG. TR. 2.748
00-70 (1970)
00-S-1180 (2) (1961)
24' G.E. + GRAN. 2.748
00-1 (17) (1961)
GRAN. 2.748

20' OIL AGG. TR. 2.748
00-70 (1970)
00-S-1180 (2) (1961)
24' G.E. + GRAN. 2.748
00-1 (17) (1961)
GRAN. 2.748

20' OIL AGG. TR. 2.748
00-70 (1970)
00-S-1180 (2) (1961)
24' G.E. + GRAN. 2.748
00-1 (17) (1961)
GRAN. 2.748

20' OIL AGG. TR. 2.748
00-70 (1970)
00-S-1180 (2) (1961)
24' G.E. + GRAN. 2.748
00-1 (17) (1961)
GRAN. 2.748

20' OIL AGG. TR. 2.748
00-70 (1970)
00-S-1180 (2) (1961)
24' G.E. + GRAN. 2.748
00-1 (17) (1961)
GRAN. 2.748

20' OIL AGG. TR. 2.748
00-70 (1970)
00-S-1180 (2) (1961)
24' G.E. + GRAN. 2.748
00-1 (17) (1961)
GRAN. 2.748

ROUTES
53
C
L
O
A
E

BENTON-CO.

© 008 SHEET 7 OF 11

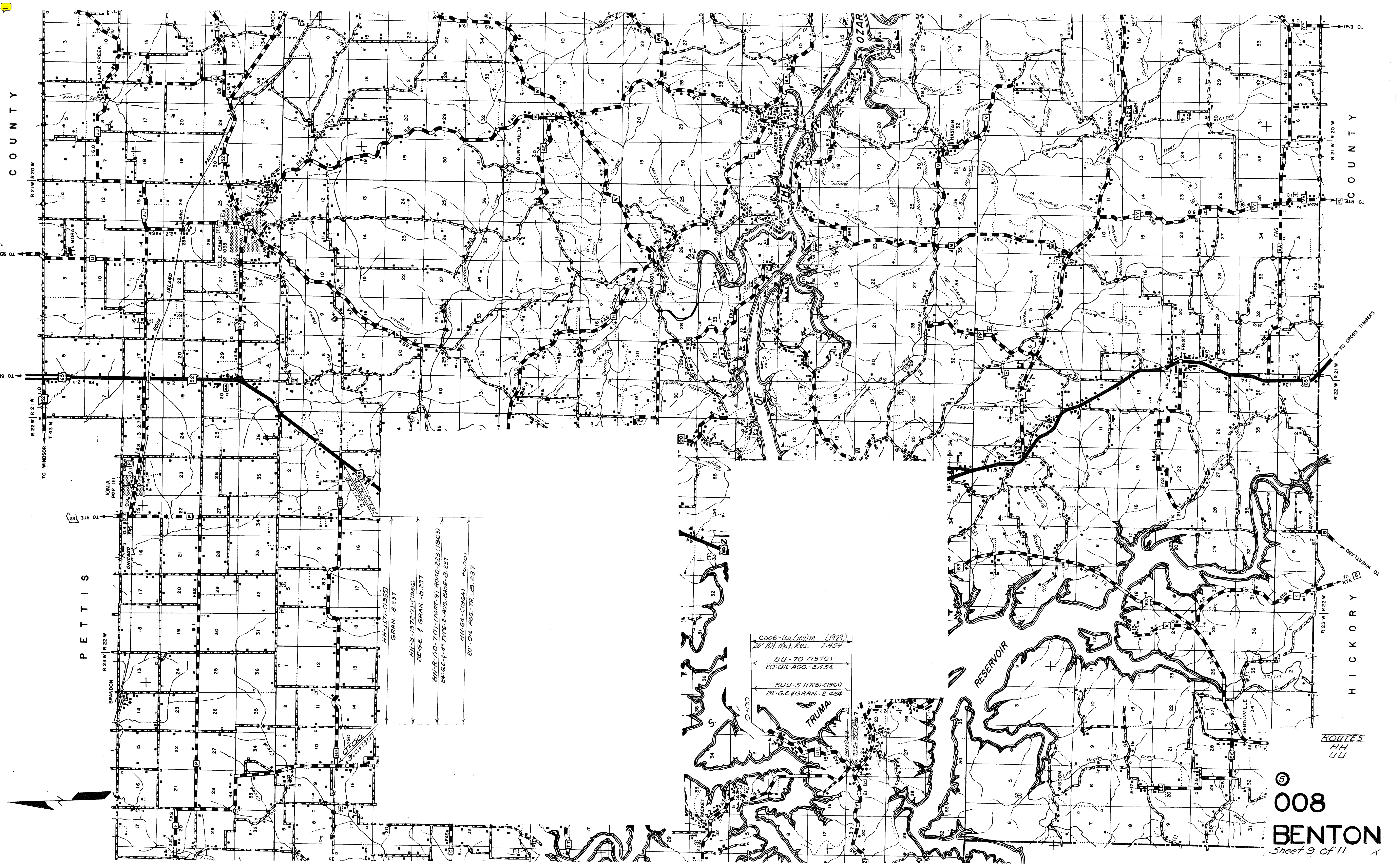


PETTIS

MORGAN

ROUTES
F
L
M (ALL)
W

⑤
008
BENTON
Sheet 8 of 11

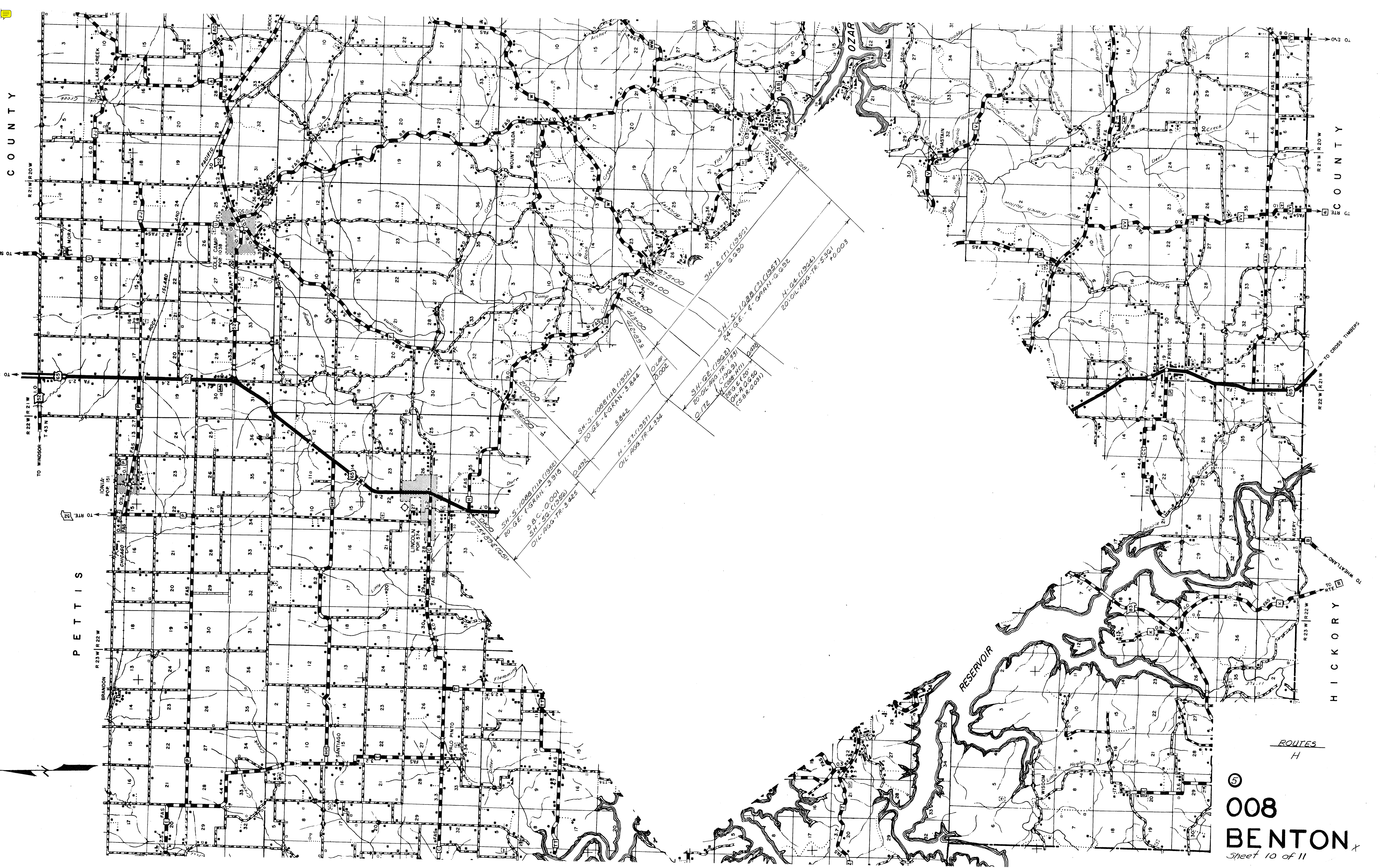


P E T T I S

H I C K O R Y

HH-1 (7-1955)
 GRAN. - 8.237
 HH-S-1972 (1-1956)
 24' G.E. & GRAN. - 8.237
 HH-R-AD-7 (1) (PART 9) ROAD-223 (1963)
 24' G.E. & TYPE-2-AGG-BASE-8.237
 HH-G4-1964) 40.001
 20' OIL-AGG-TR-8.237

COOB-UU (10) M (1989)
 20' Bt. Mod. Rps. 2.454
 UU-70 (1970)
 20' OIL-AGG-2.454
 SUU-S-117 (8) (1961)
 24' G.E. & GRAN. - 2.454



COUNTY

COUNTY

TO

R 21 W R 20 W

R 21 W R 20 W

R 22 W R 21 W

R 22 W R 21 W

TO WINDSOR

TO CROSS TIMBERS

R 23 W R 22 W

R 23 W R 22 W

TO IONIA

TO WHEATLAND

R 24 W R 23 W

R 24 W R 23 W

PETTIS

HICKORY

RESERVOIR

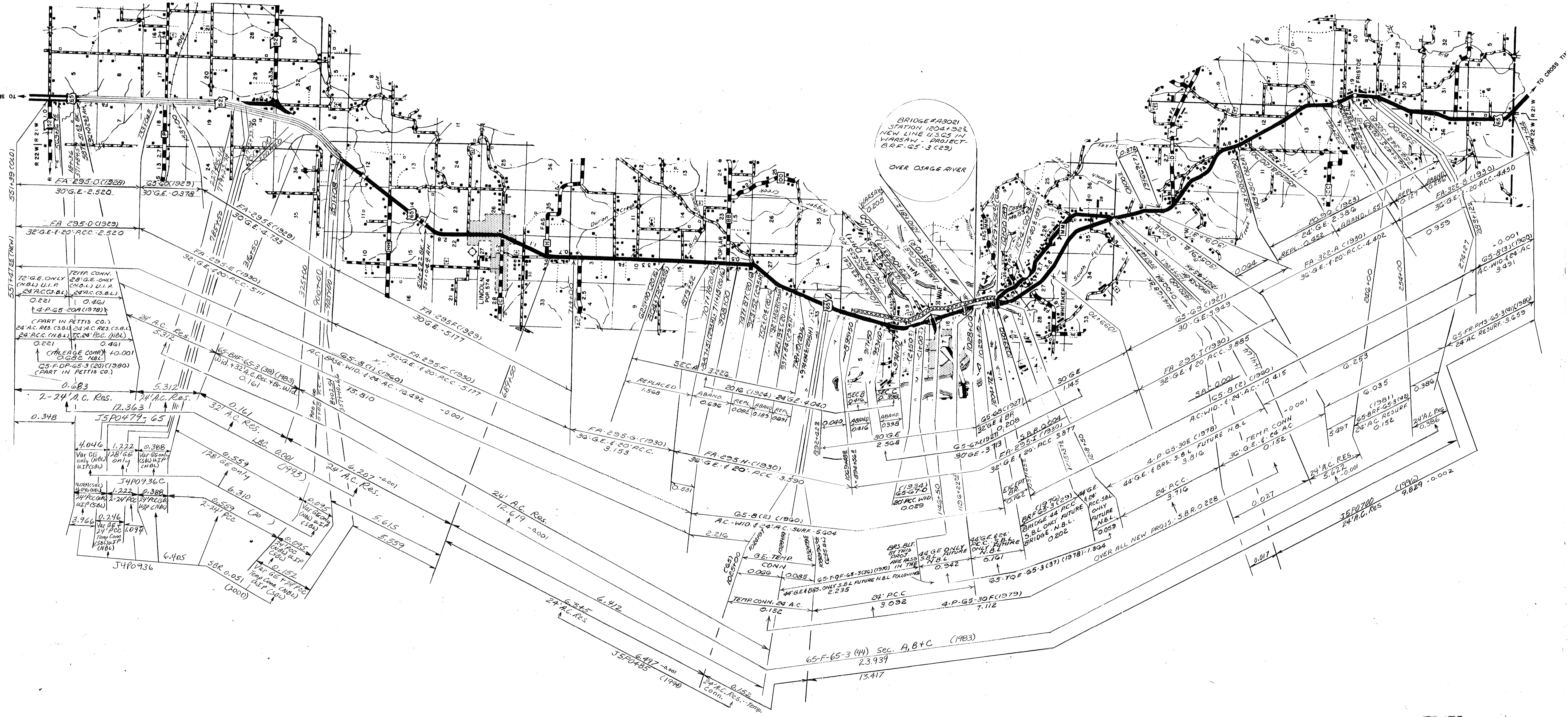
SH-5-1088 (1/1/1922)
20-GE-4-GRAN-3-844
3-842
OIL-AGG-TR-3-425

SH-5-1088 (1/1/1922)
20-GE-4-GRAN-3-844
3-842
OIL-AGG-TR-3-425

SH-5-1088 (1/1/1922)
20-GE-4-GRAN-3-844
3-842
OIL-AGG-TR-3-425

SH-5-1088 (1/1/1922)
20-GE-4-GRAN-3-844
3-842
OIL-AGG-TR-3-425

© 008 BENTON
Sheet 10 of 11



ROUTE
65