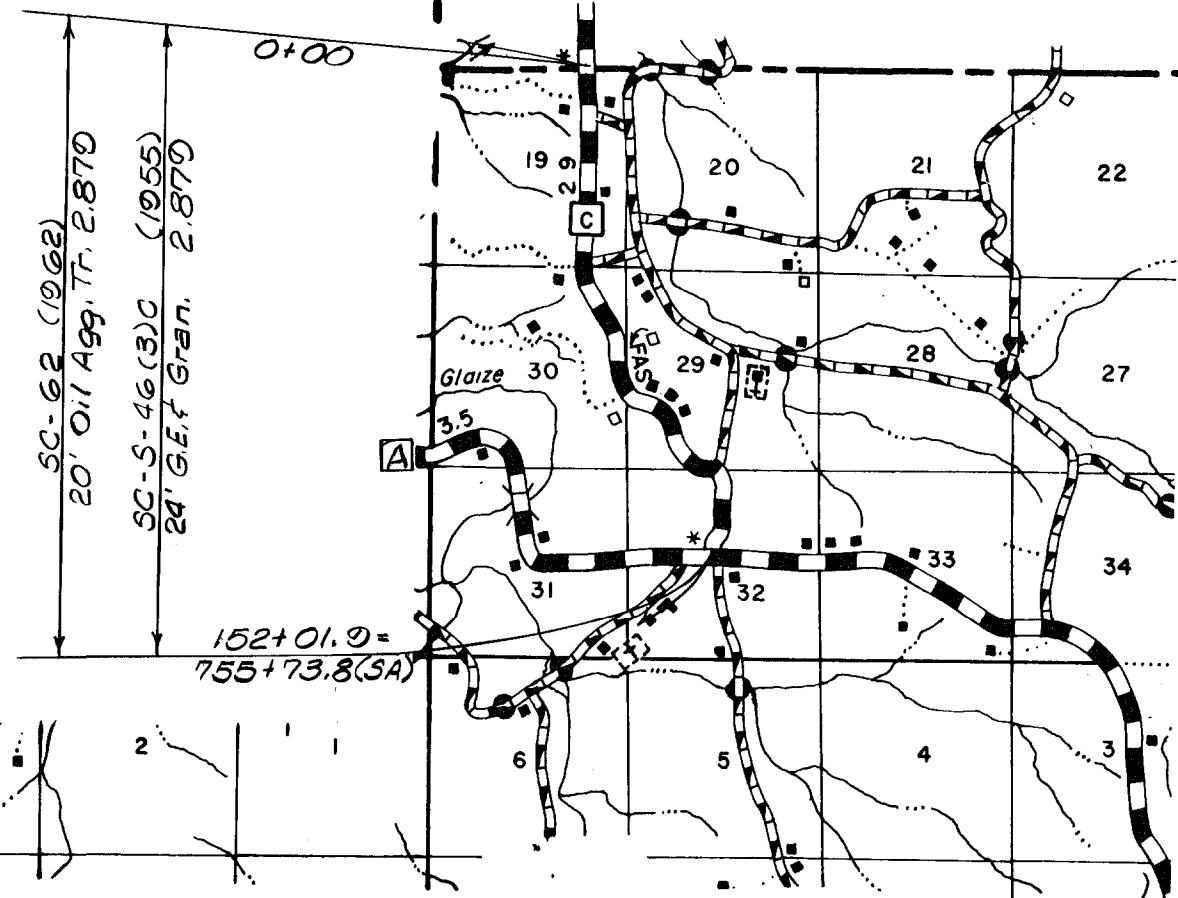


LAKE OZARK
POP. 507
POP. IN MILLER CO. 409
POP. IN CAMDEN CO. 98

OSAGE BEACH
POP. 1091



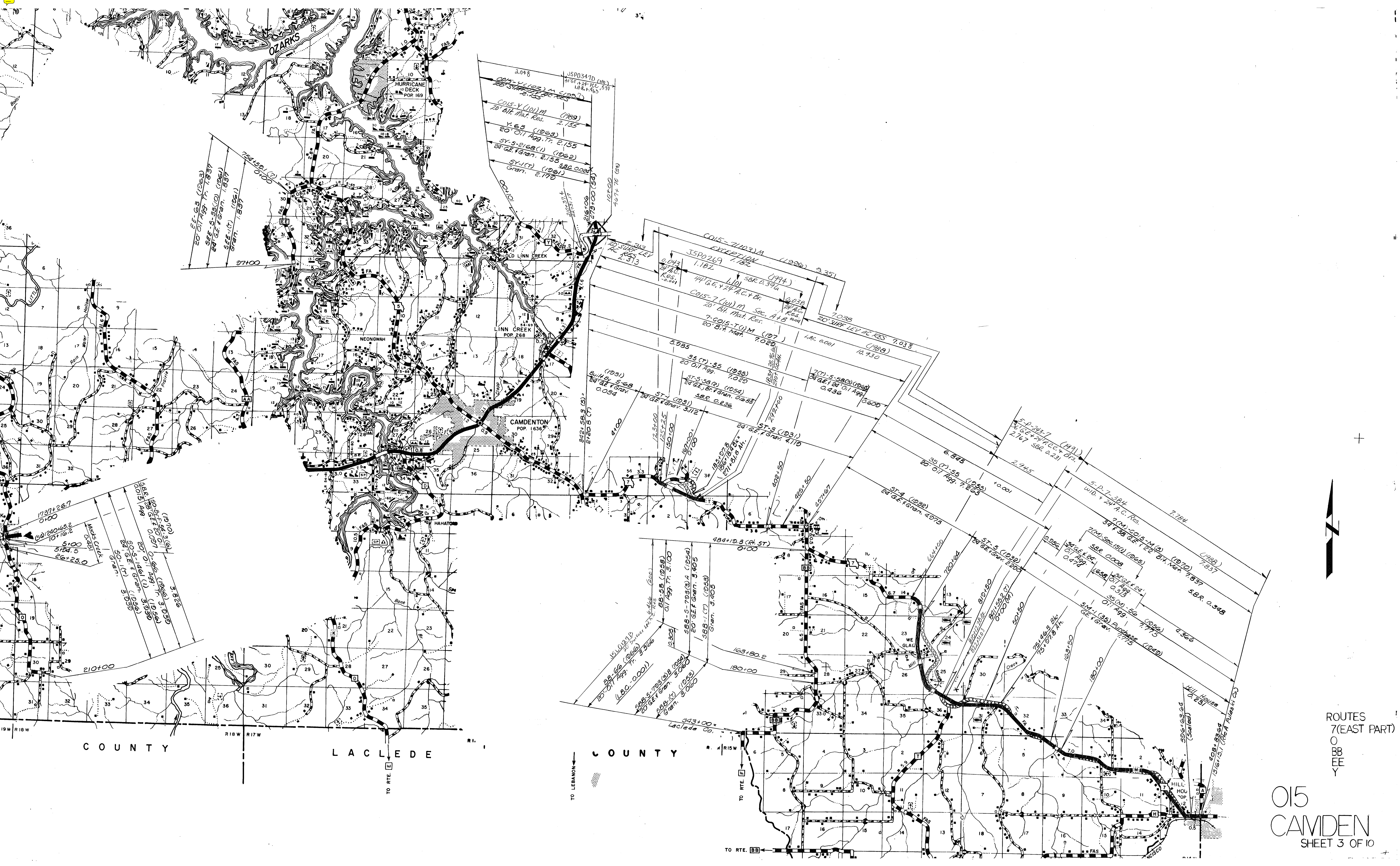
ROUTES
5
C

015
CAMDEN
SHEET 1 OF 10



ORY
+
COUNTY

ROUTES
7(WEST PART)
134
42
AA
KK
NN
TT



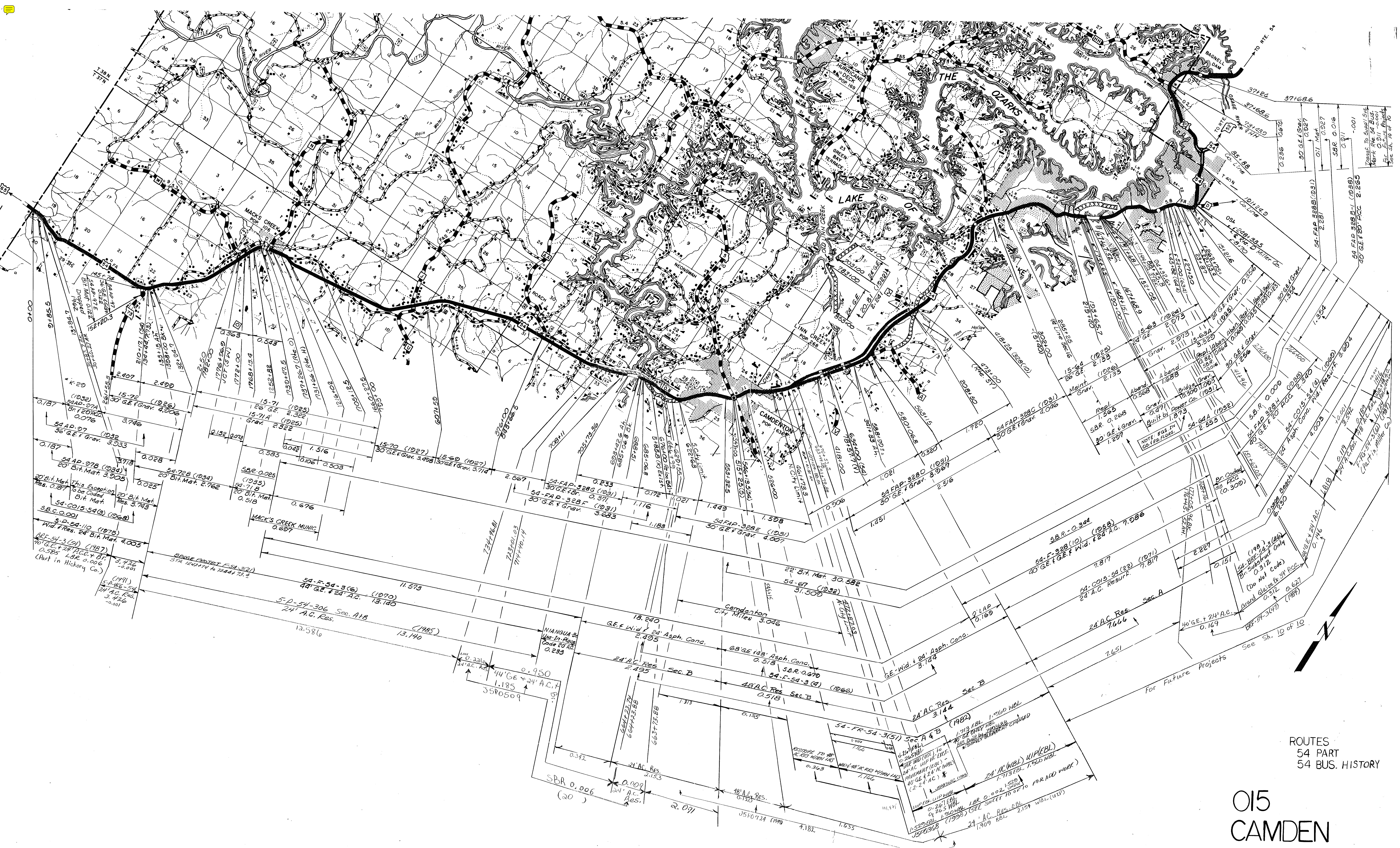
COUNTY

LACLEDE

COUNTY

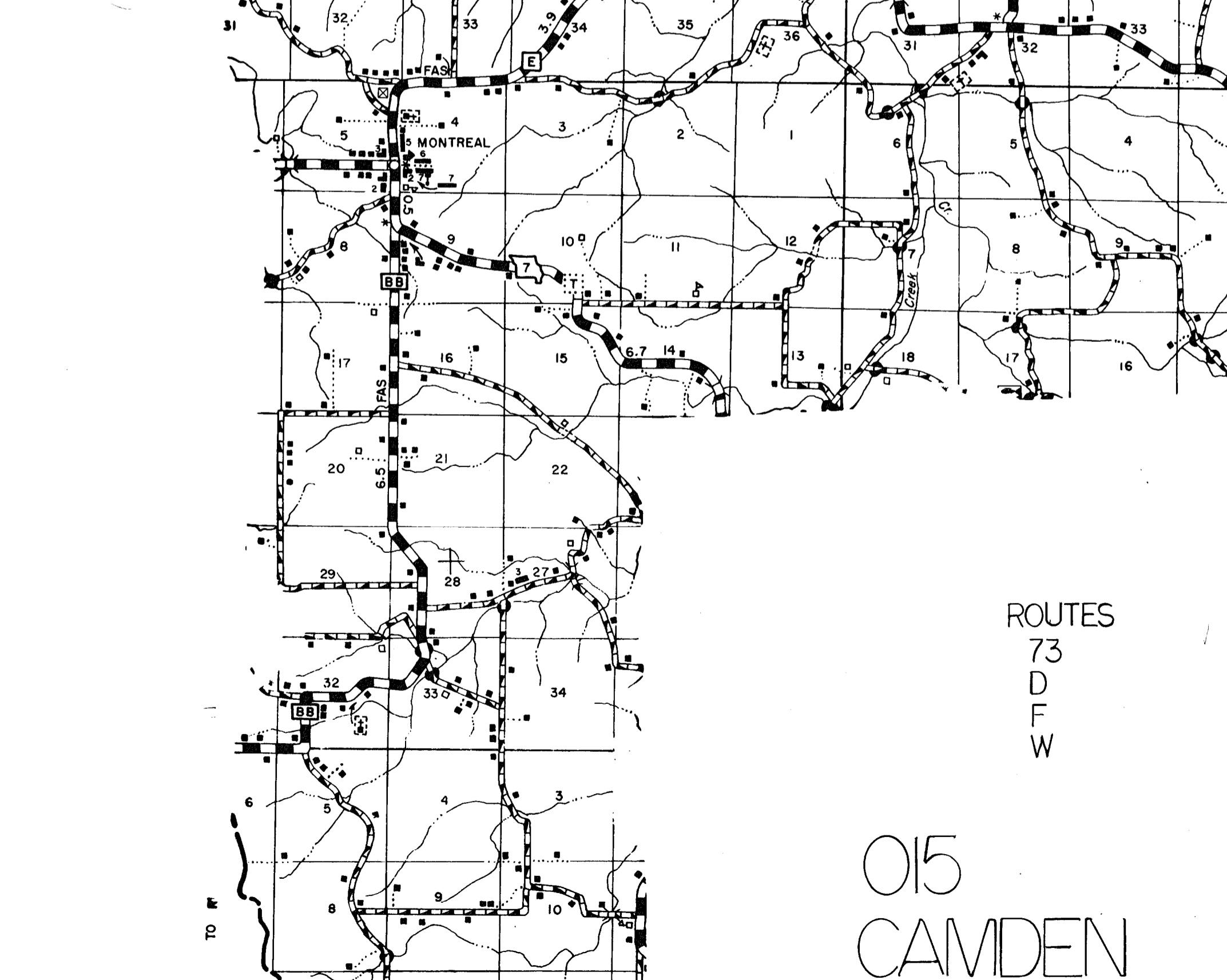
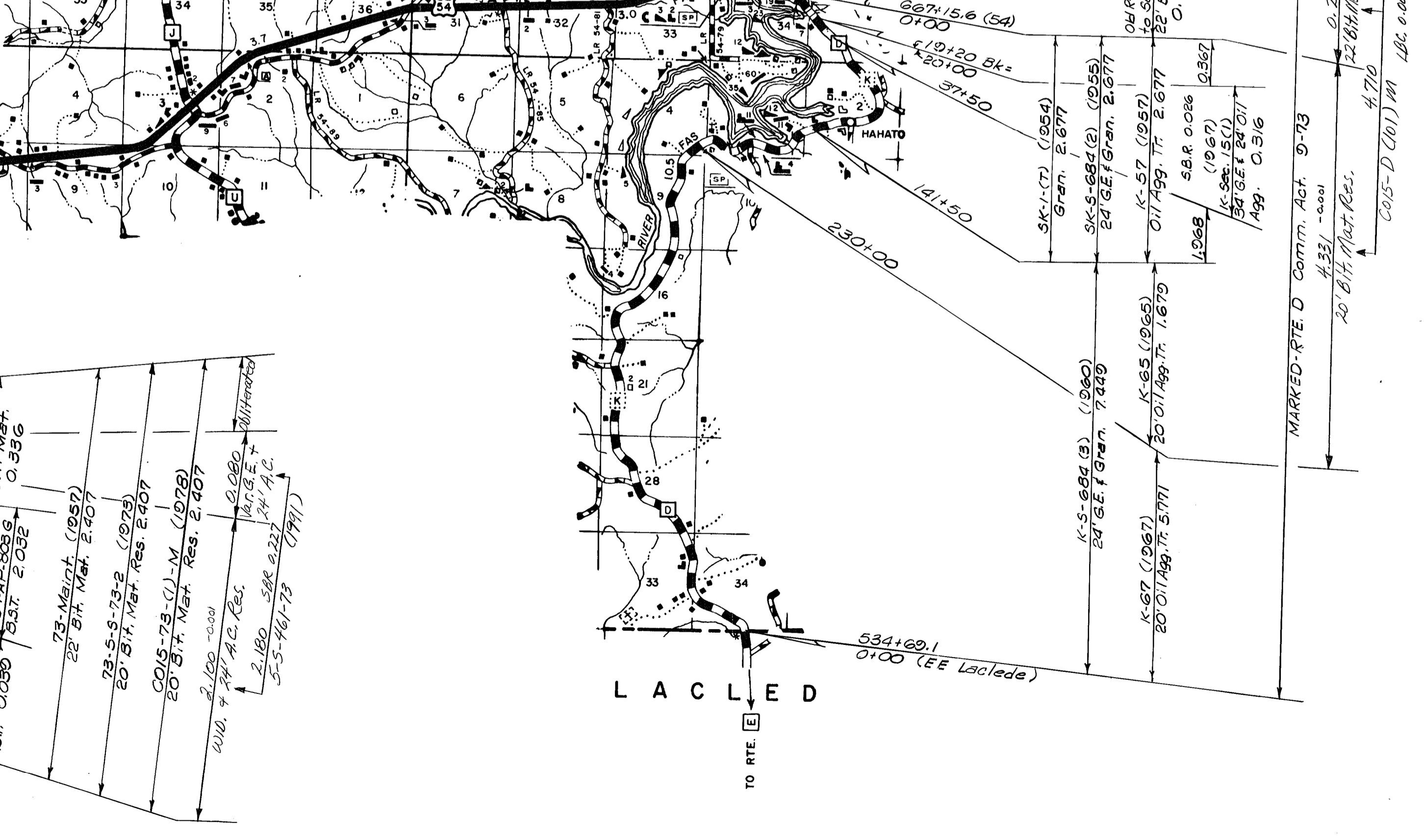
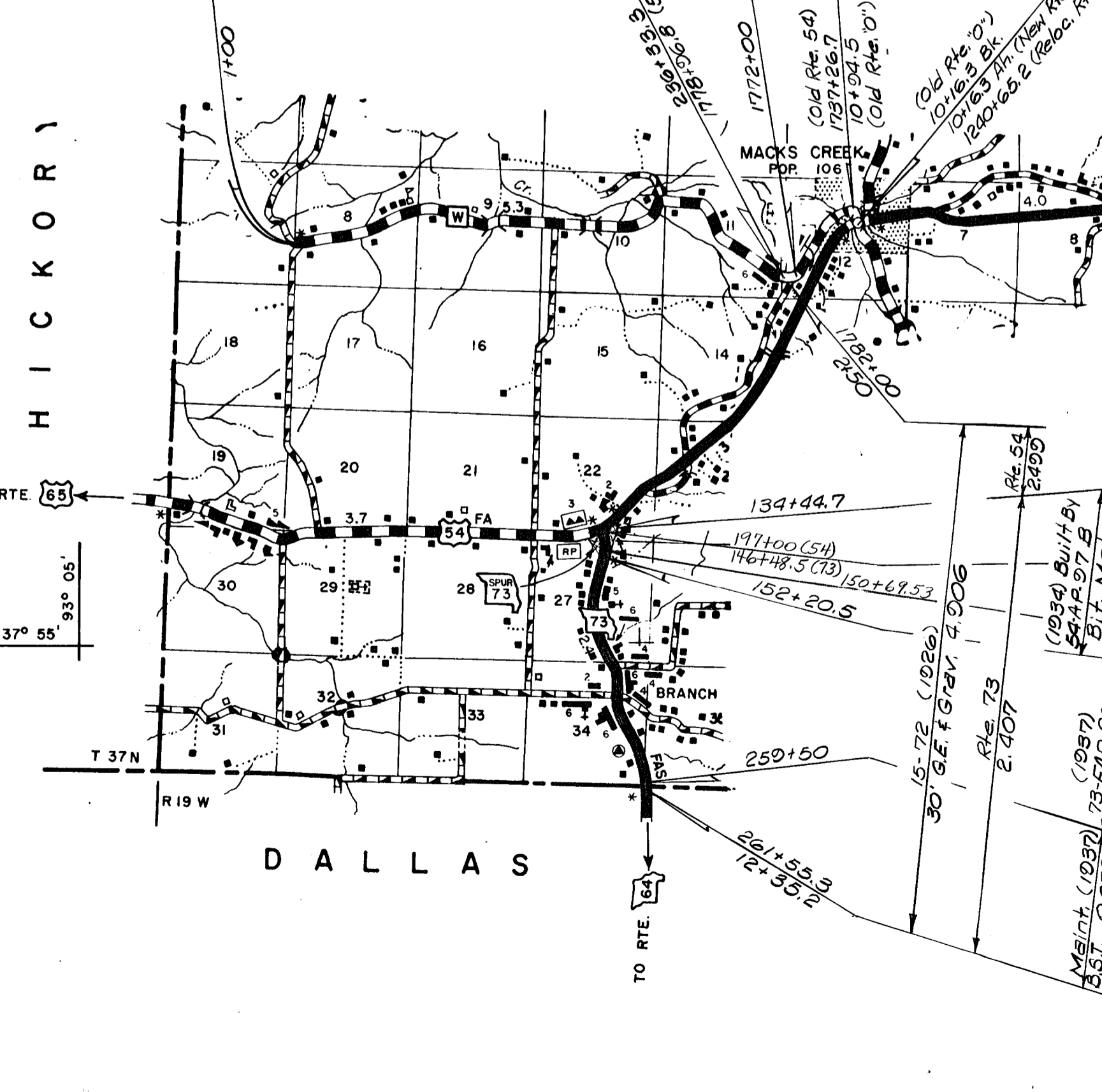
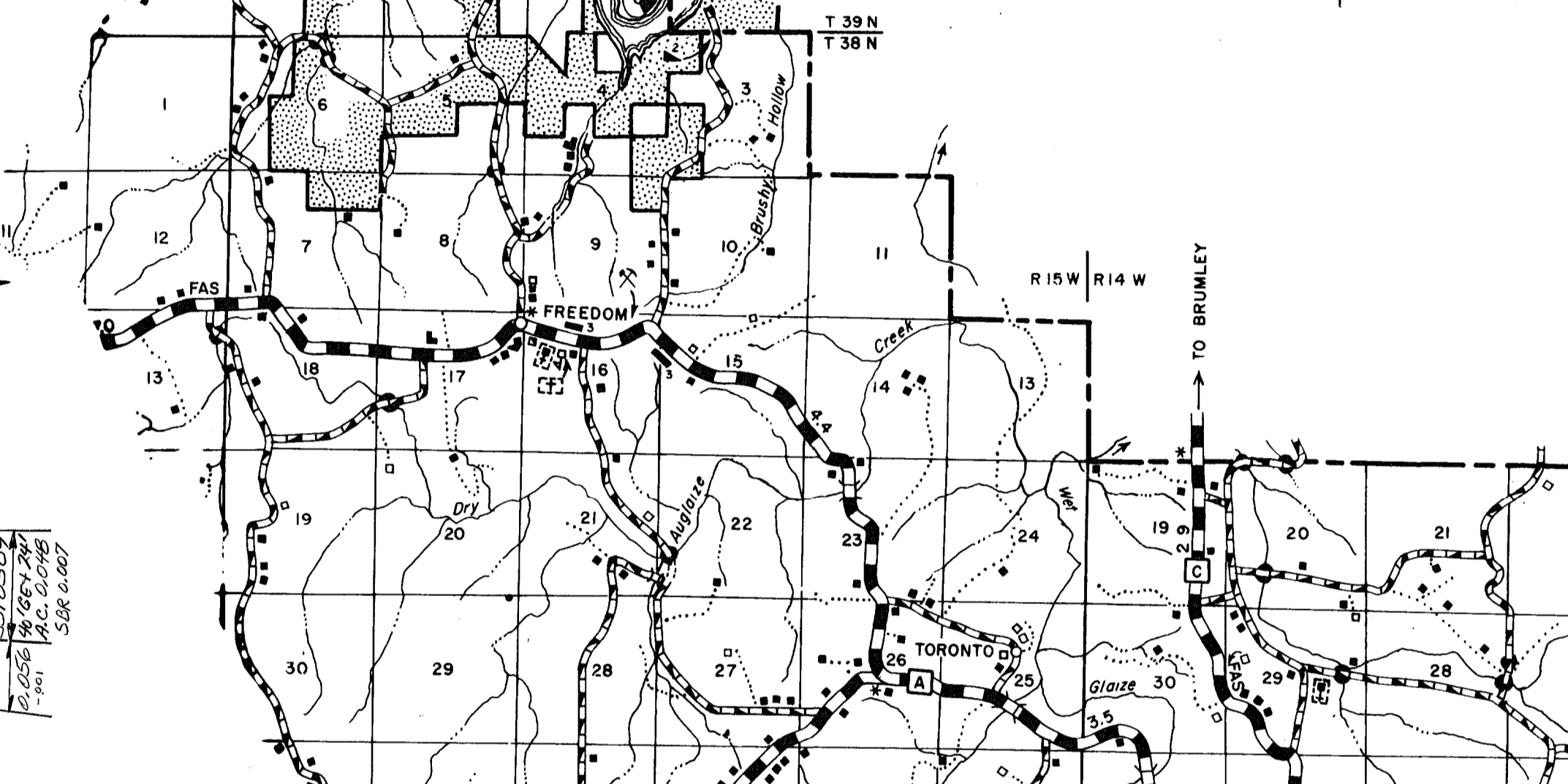
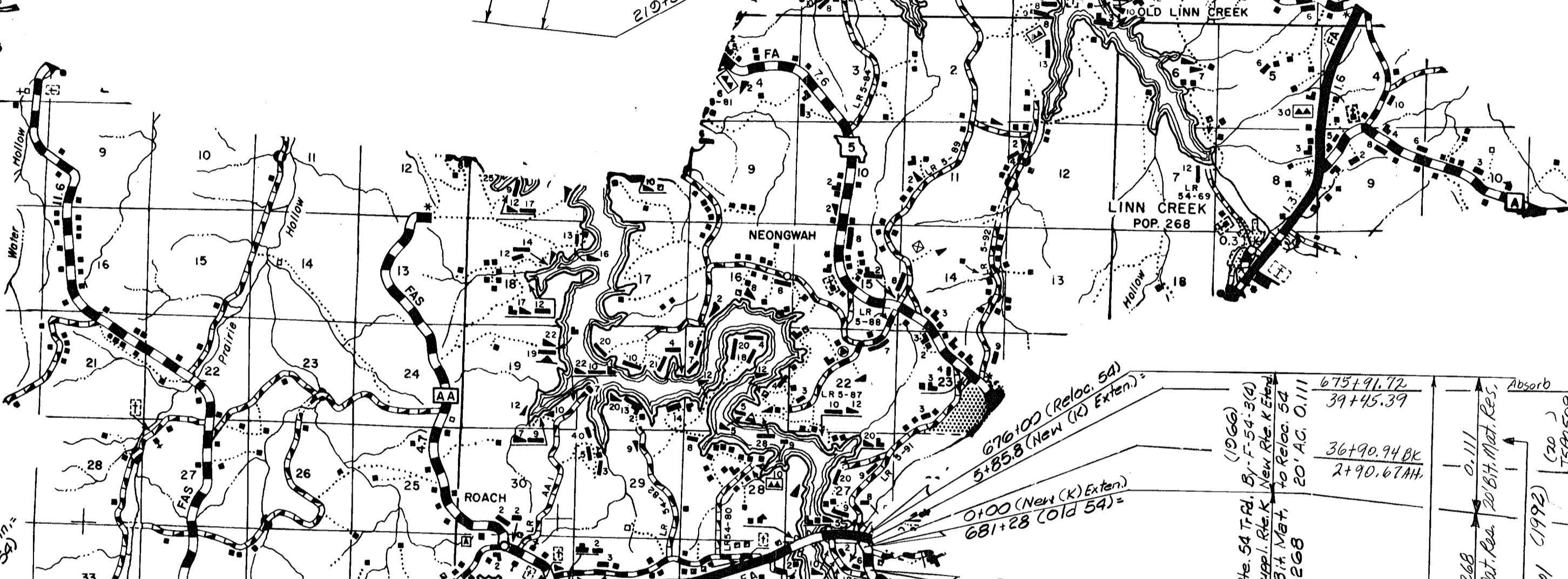
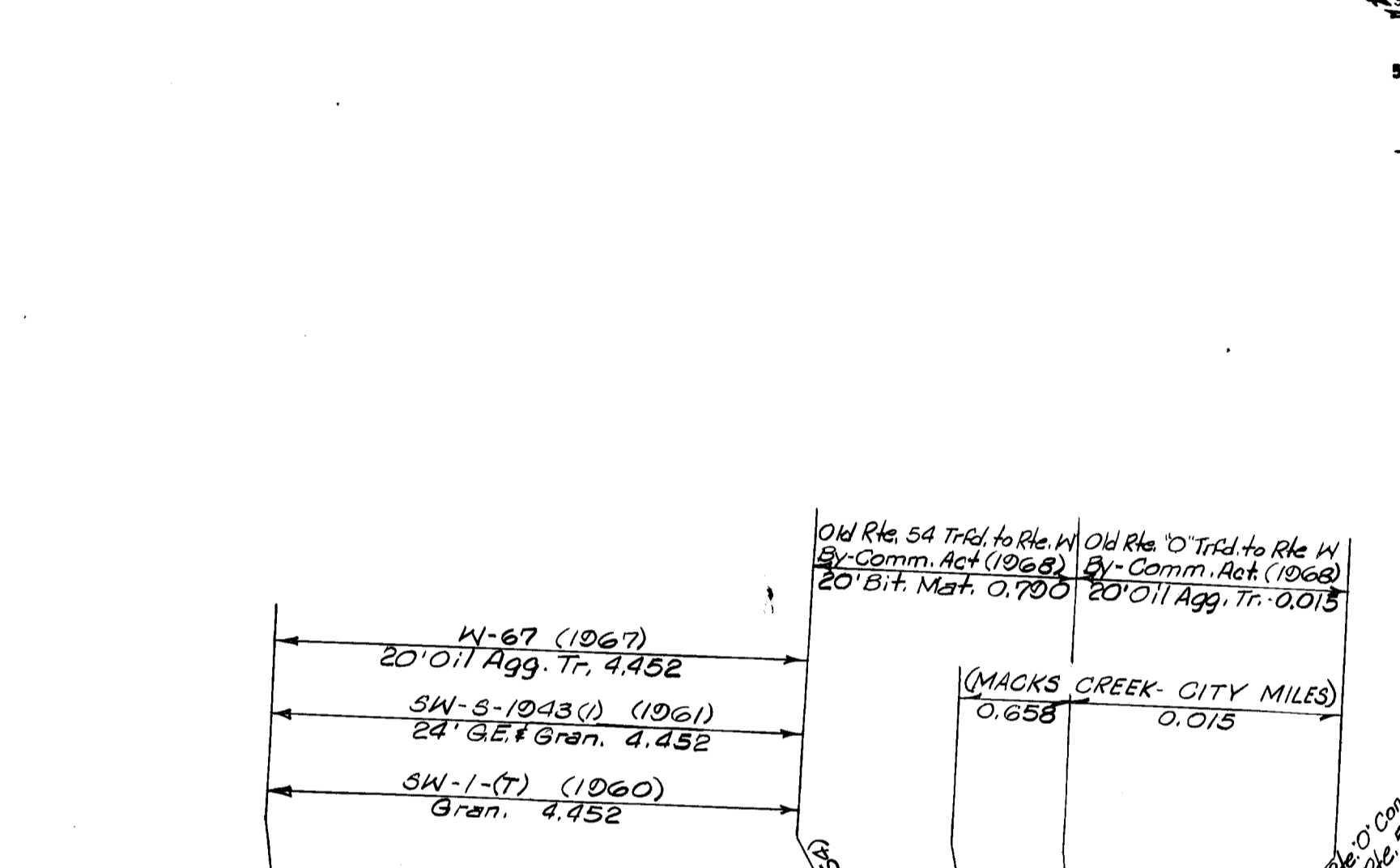
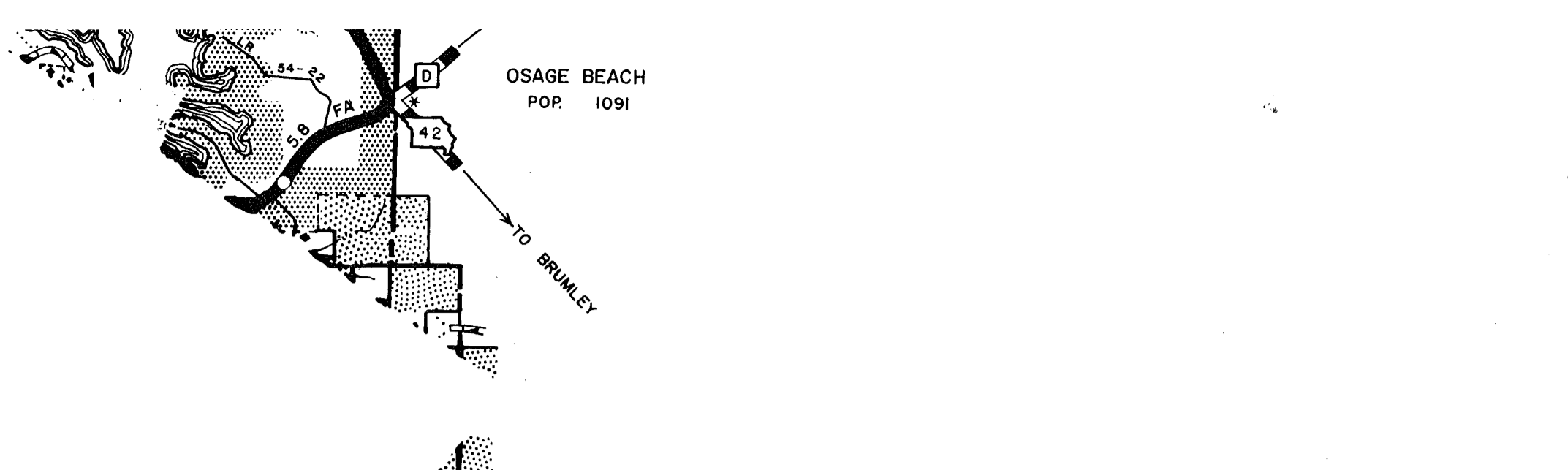
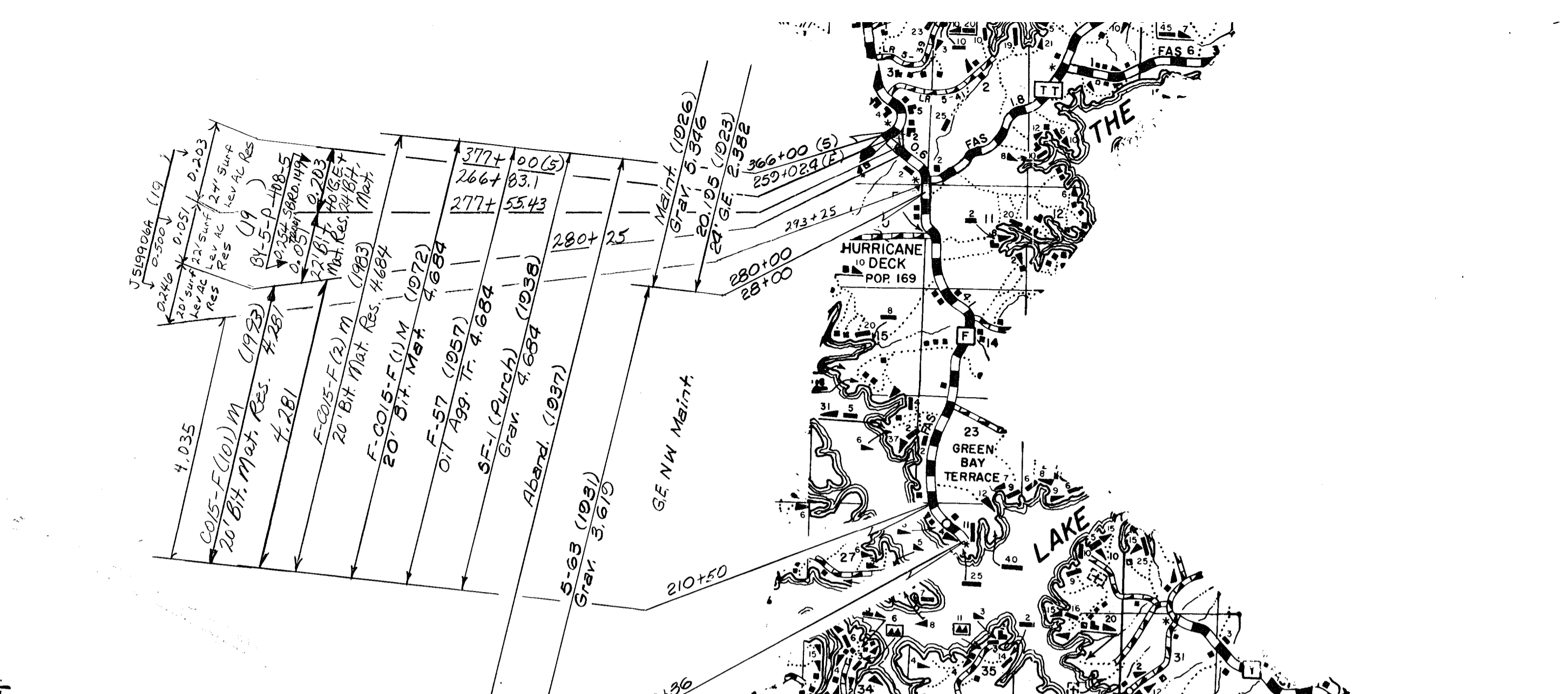
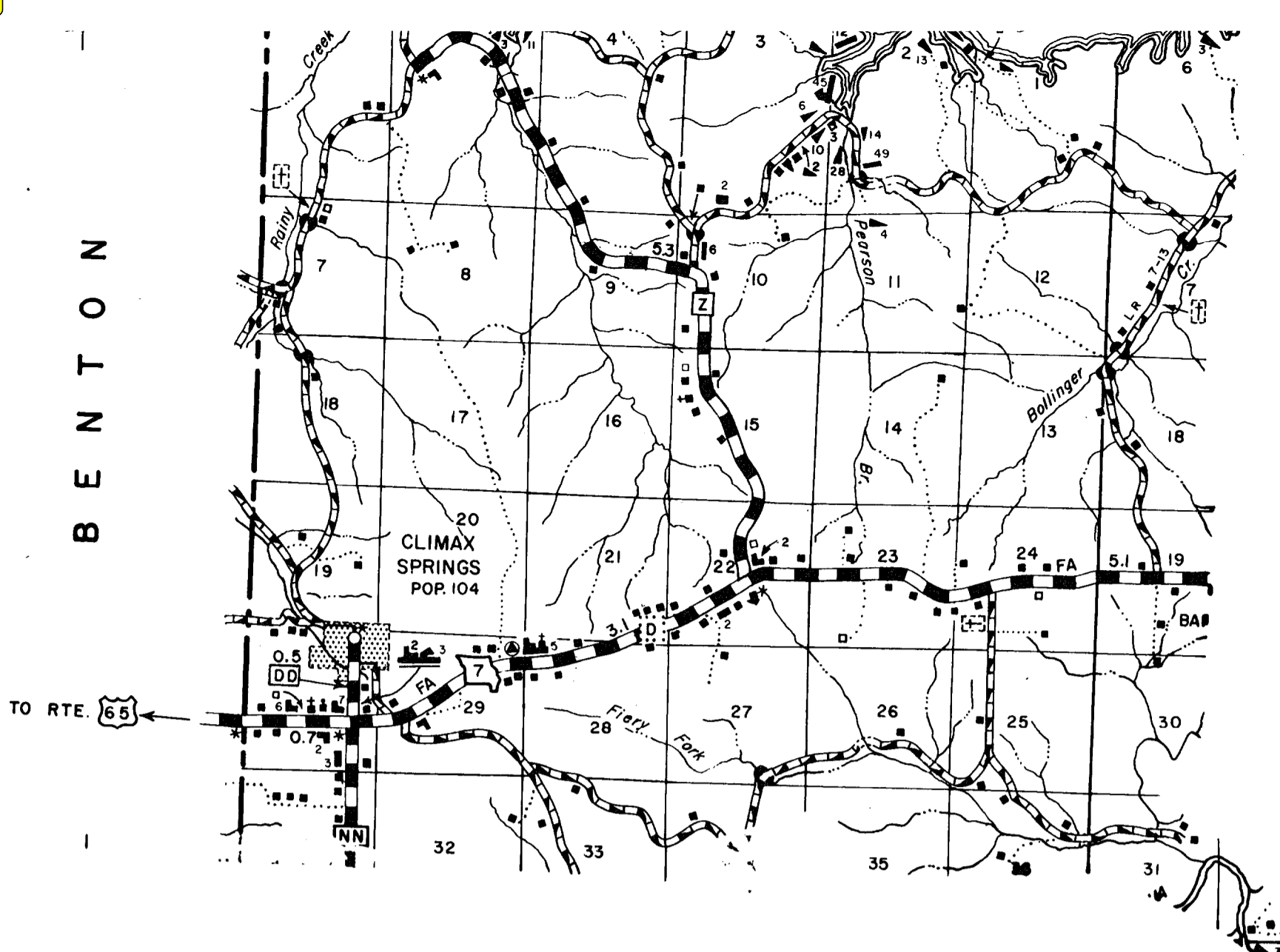
ROUTES
7(EAST PART)
O
BB
EE
Y

015
CAMDEN
SHEET 3 OF 10

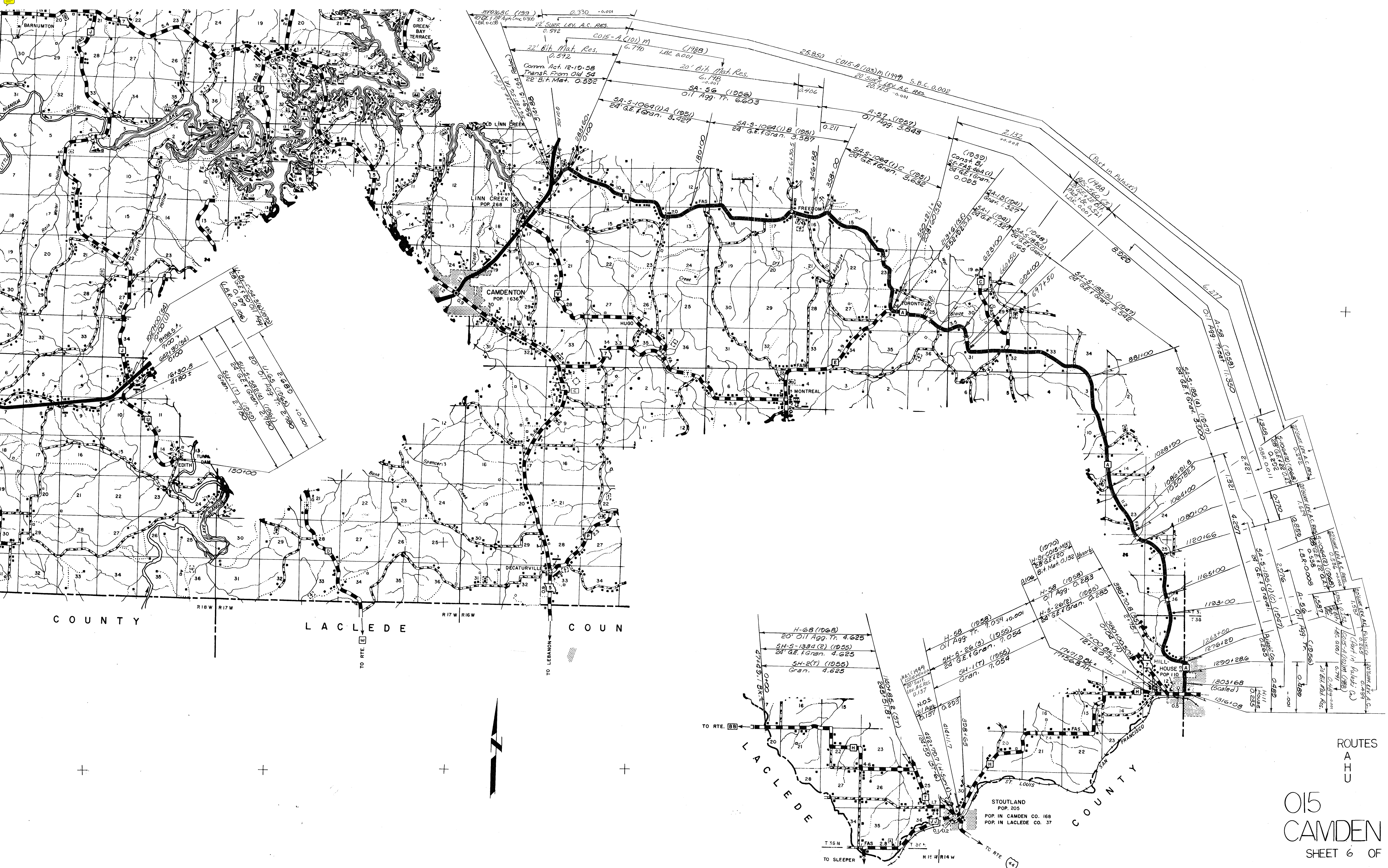


ROUTES
54 PART
54 BUS. HISTORY

015 CAMDEN



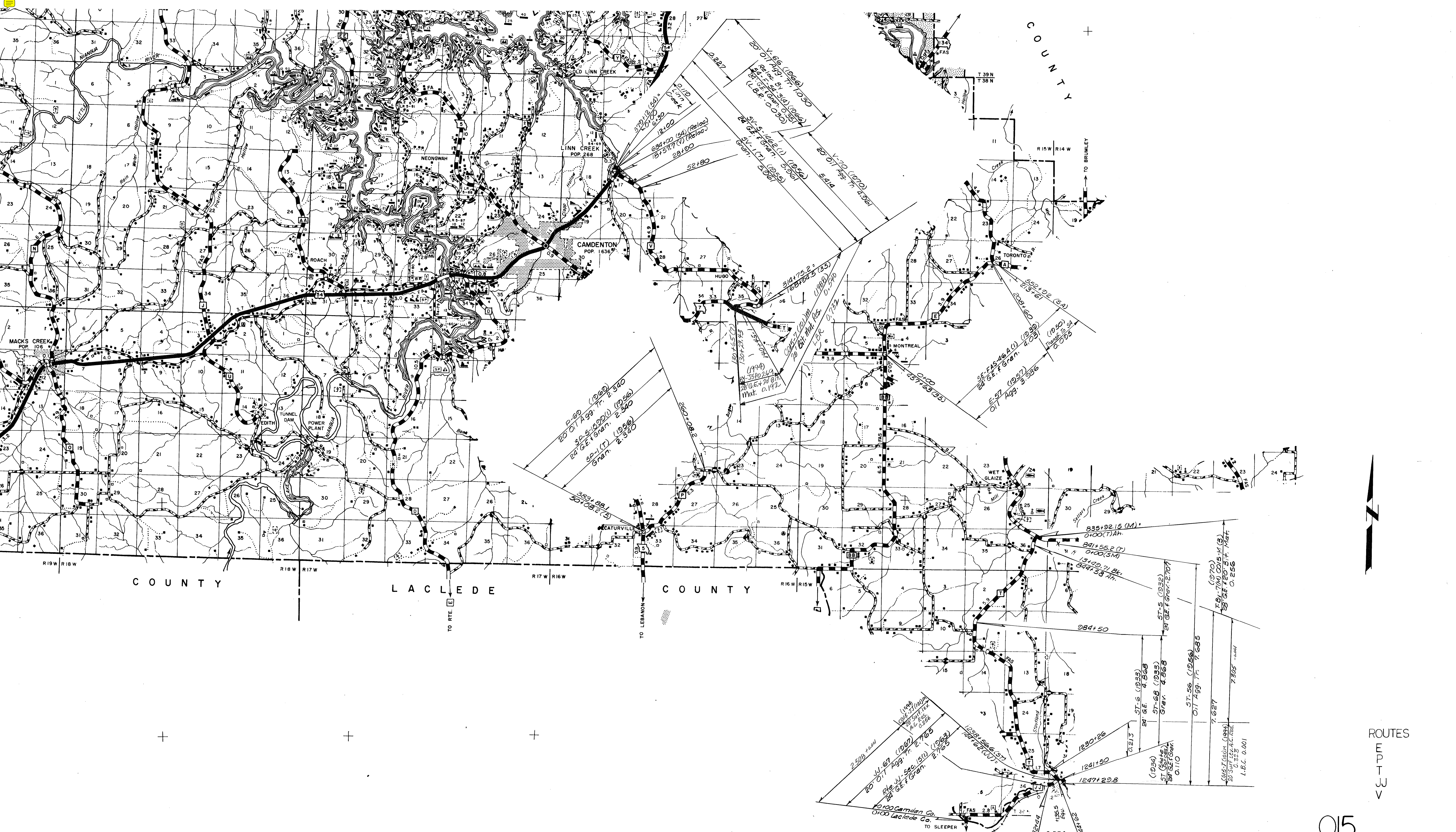
ROUTES
73
D
F
W



ROUTES
A
H
U

015
CAMDEN

SHEET 6 OF 10



ROUTES
E
P
T
J
U
V

P-60 (1929)
20' 0" 17 Agg. Tr. 2.340
SP-S-509(U) (1956)
24' GE. F. Gran. 2.340
SP-1 (T) (1956)
SP-1 (T) (1956)
Gran. 2.340

314175.2 ±
168394.5 (35)
CUST. (1944)
20' GE. F. Gran. (1988)
L.B.C. 0.1732
0.1994
24' 35' 10" 26.9
28' 6" 47' 78" 81"
Mat. 0.197

SE FAS-46 A (V) (1939)
20' GE. F. Gran. 2.091
E-57 (1957)
011 Agg. 3.9536

835+92.15 (M)
0+00 (T) Ah.
841+55.2 (T)
0+00 (SM)
13+00.71 Bk.
844+58 Ah.

2.500 ± 0.000
1948
CUST. (1944)
20' GE. F. Gran. 2.765
JUL-67 (1967)
20' 0" 11 Agg. Tr. 2.765
Rte. J.V. Sec. 15(U) (1962)
24' GE. F. Gran. 2.765

ST-6 (1959)
24' GE. 4.868
ST-6B (1959)
24' GE. 4.868
ST-5 (1952)
011 Agg. Tr. 2.707

ST-5 (1952)
011 Agg. Tr. 2.685
7.627
7.305 ± 0.001
1970
CUST. (1970)
20' GE. F. Gran. 0.256
L.B.C. 0.001

10100 Camden Co.
0100 Laclede Co.
TO SLEEPER

COUNTY

BENTON

COUNTY

ORY



MORGAN COUNTY

SUNRISE BEACH
POP. 126
POP. IN CAMDEN CO. 95
POP. IN MORGAN CO. 31

LAKE

MILLER

SHH-S-2032(1) (1961)
24' G.E. & Gran. 4.588

20' Oil Agg. Tr. 4.588

HH-CO15-HH (1) M (1974)
22' Bit. Mat. Resurf. 4.588

CO15-HH (1) M (1983)
22' Bit. Mat. Res. 4.588

CO15-HH (1) M (1990)
22' Bit. Mat. Res. 3.936

Rt. Status Change Conveyed to Camden Co.

0.652
(1991)
55-206-HH
Par. GE 179
A.C. w/ Ho. As
2-515-200-117
4,001
6-00-4143

261+93.1
23+62
24' G.E.
0.447
500-S-338(1) (1990)
24' FSD GE FGrav. 0.510
300-S-56 (1956)
20' Oil Agg. Tr. 0.510
CO15-DD (1) M (1982)
20' Bit. Mat. Res. 0.510

471+33.7 (60)
0+00

161+00

193+80.25

100+03.87

243+78

407+60

607+85.2+
16+20.13

644+65.2

10+00 (W)
1027+00 (S4)

507-N68-S82 (1935)
24' GE FGrav. 2.798

51+56 (1956)
0+00

0+11 Agg. Tr. 2.798

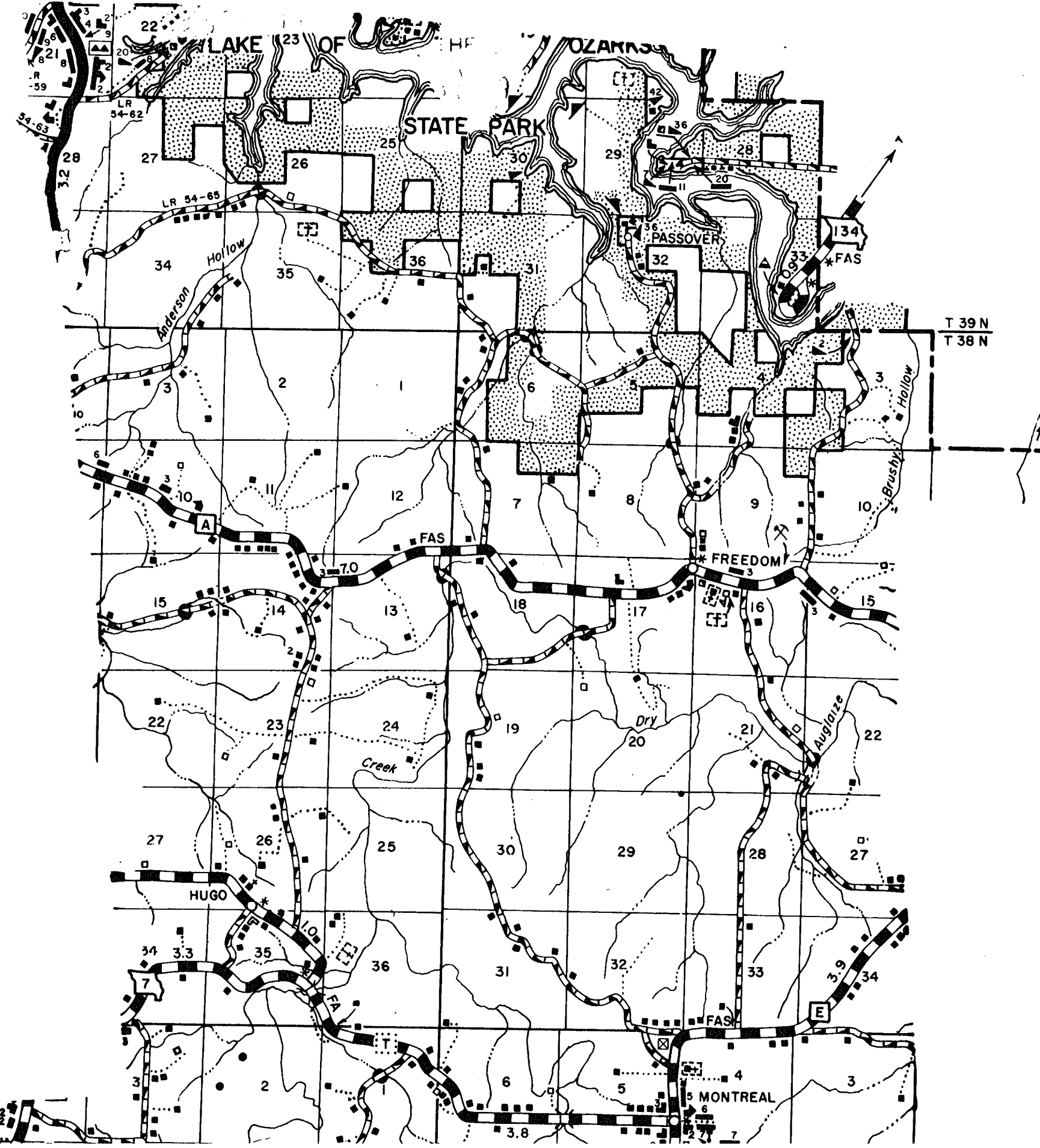
2+670

0.000E

(1970)
51-SV-F-54-3(6)
20' Oil Agg.
0.123

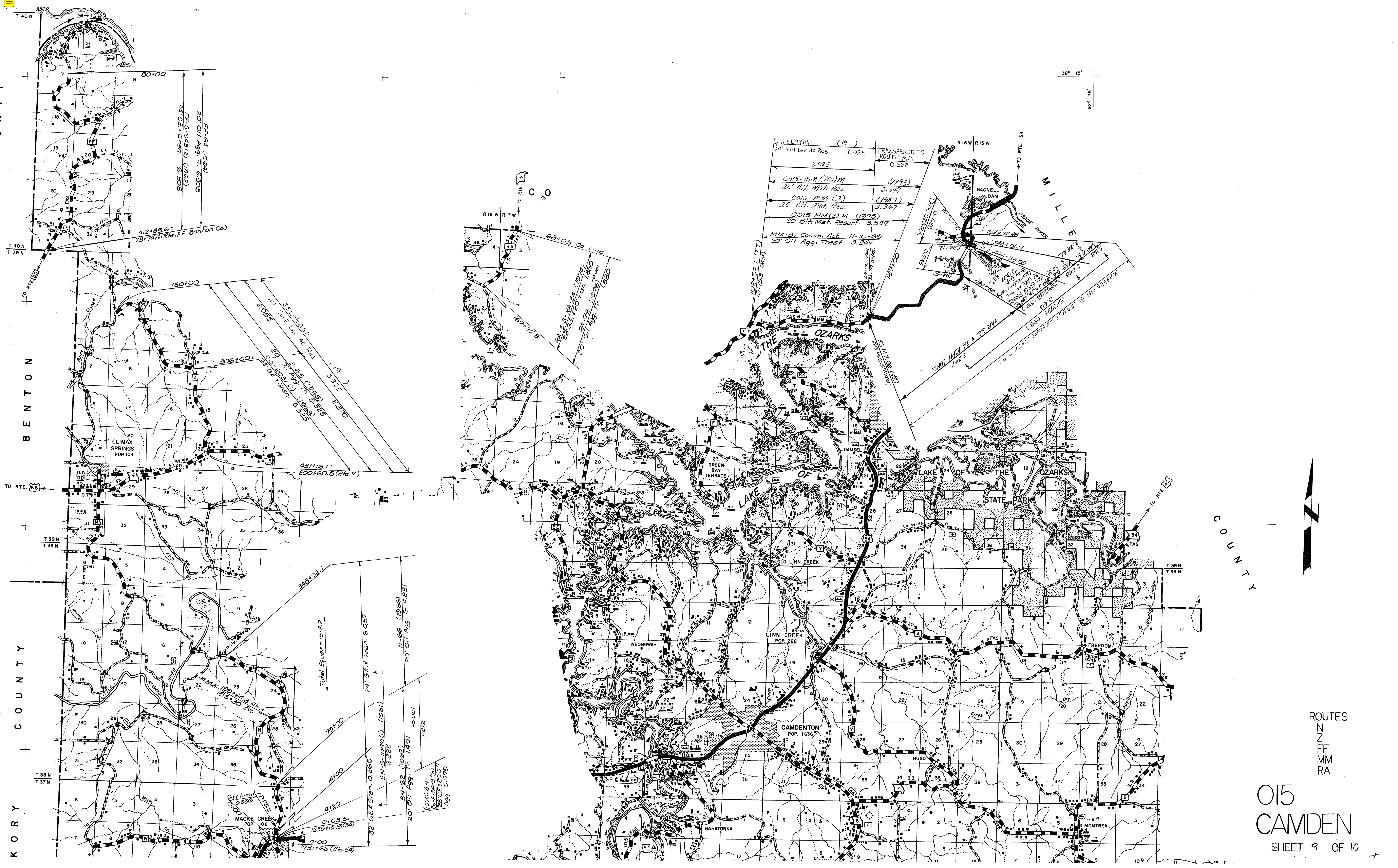
J-57 (1957)
Oil Agg. Tr. 8.842

J-51,001.7C
20' Surf. Lev. Ac. Res.
11+625



ROUTES
J
DD
HH - History

CAMDEN
SHEET 8 OF 10



ROUTES
 N
 Z
 FF
 MM
 RA

015
 CAMDEN
 SHEET 9 OF 10



ROUTES
54 PART
54 BUS.

015 CAMDEN

SHEET 10 OF 10