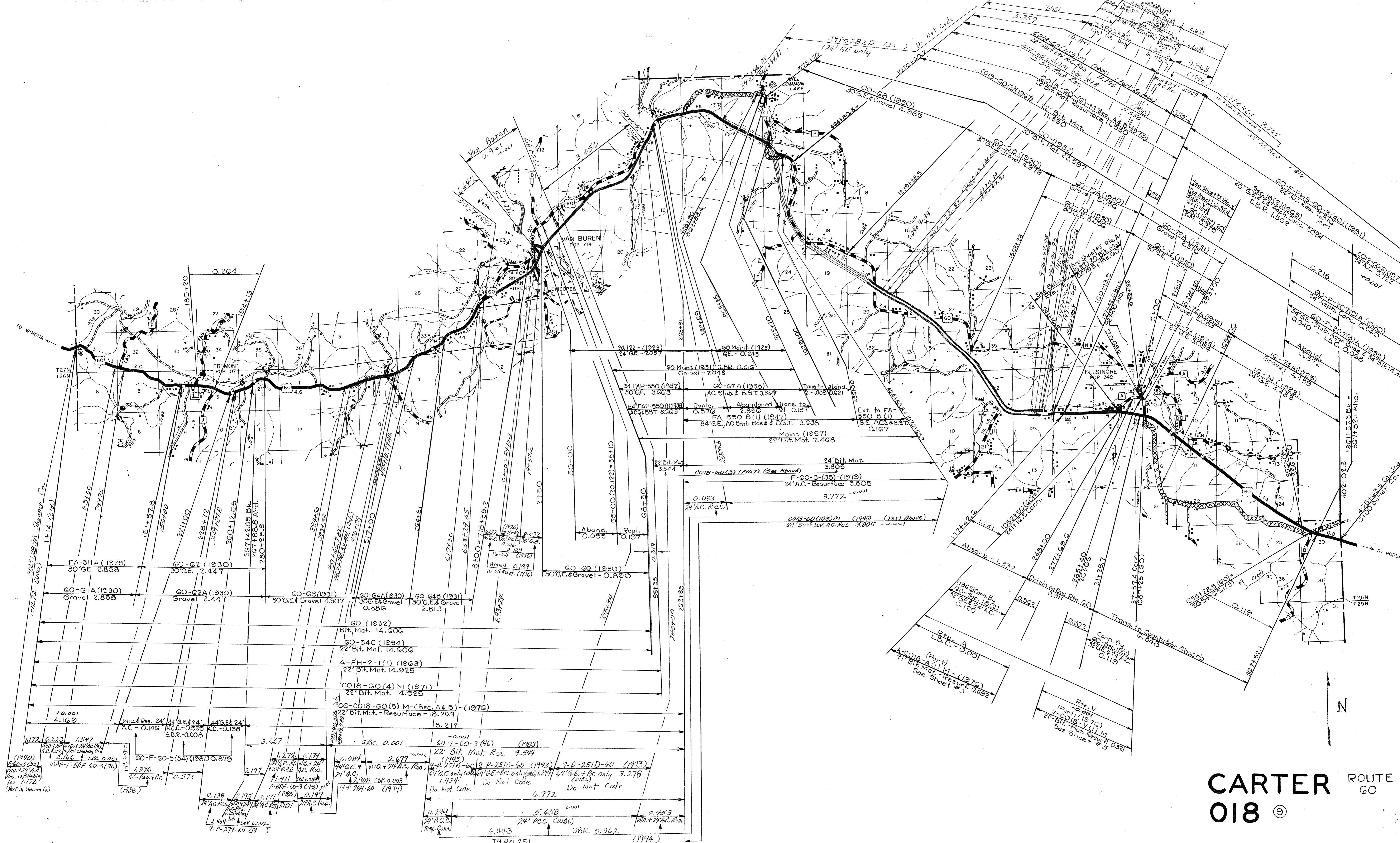
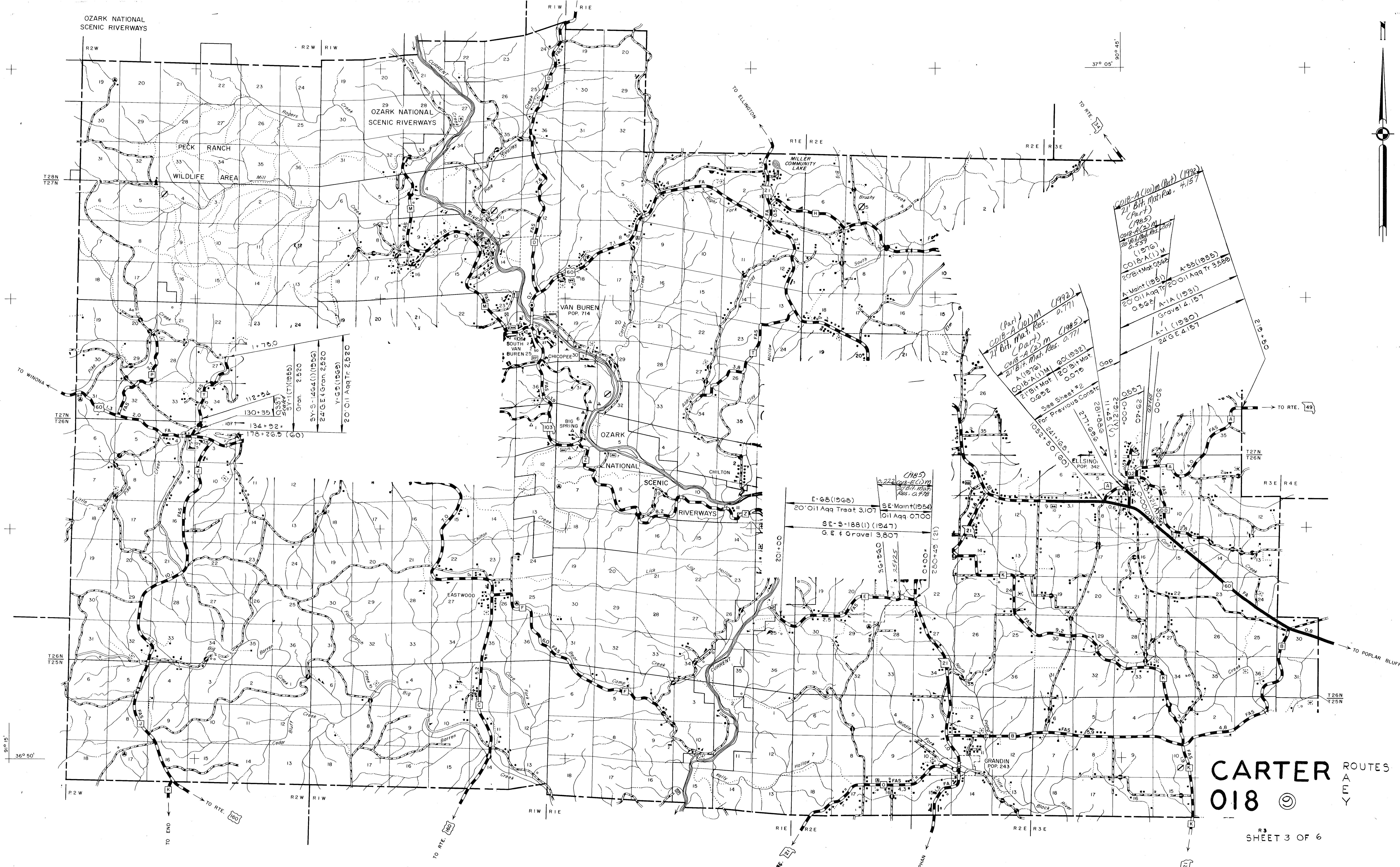


CARTER ROUTES  
21  
103  
N  
DD



**CARTER ROUTE**  
**018** ©  
**GO**

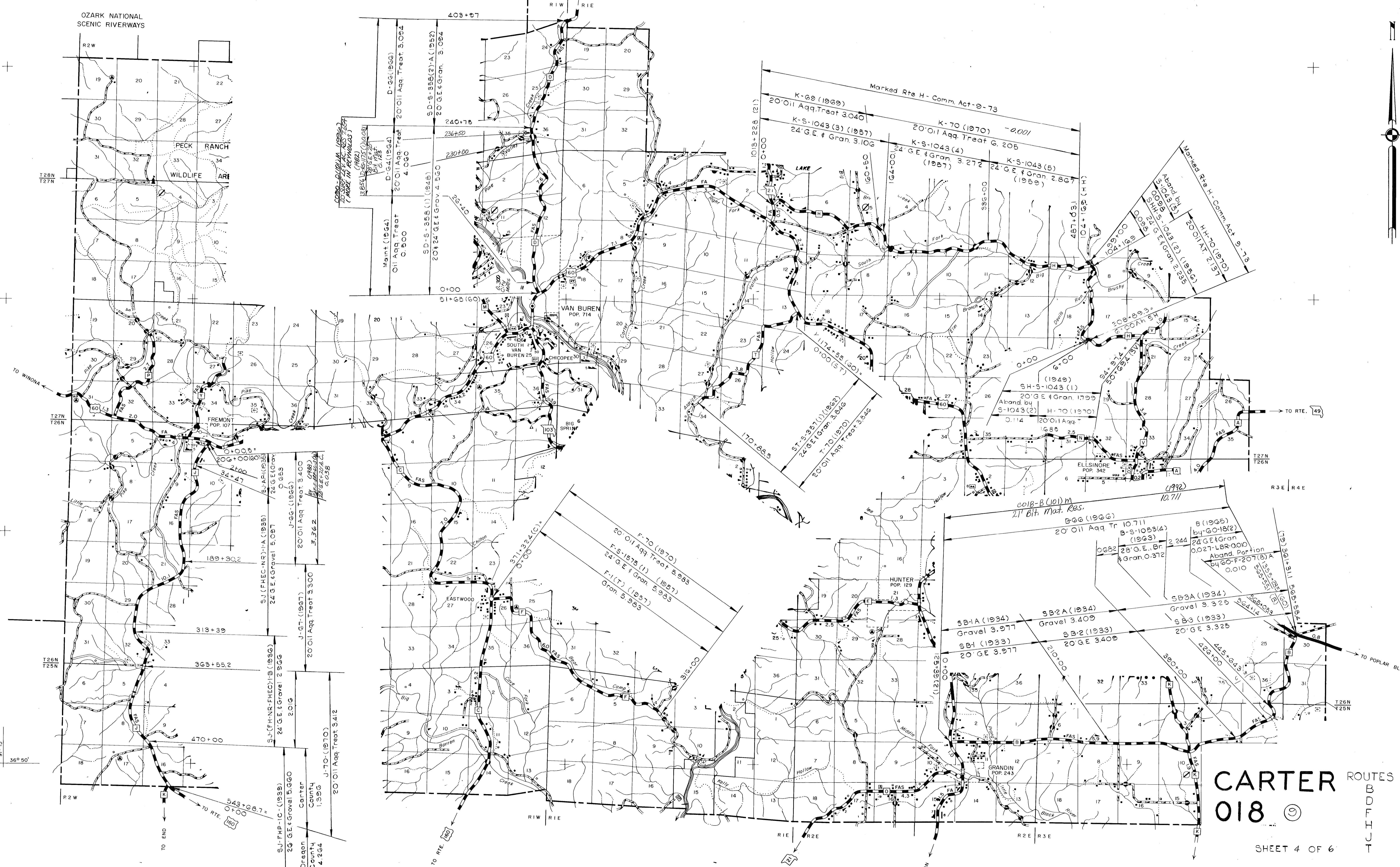


CO18-A (10) M (Part) (1992)  
 21' Bit. Mat. Res. 4.157  
 (Part)  
 (1985)  
 CO18-A (2) M  
 20' Bit. Mat. Res. 2.559  
 (1976)  
 CO18-A (1) M  
 20' Bit. Mat. Res. 0.562  
 A-Maint (1955) A-55 (1955)  
 20' Oil Aqq Tr 20' Oil Aqq Tr 3.588  
 0.562 / A-1A (1993)  
 Gravel 4.157  
 A-1 (1930)  
 24' GE 4.157

(Part)  
 CO18-A (10) M (1992)  
 21' Bit. Mat. Res. 0.771  
 (Part)  
 (1985)  
 CO18-A (2) M  
 21' Bit. Mat. Res. 0.771  
 A (1976)  
 CO18-A (1) M 20' Bit. Mat.  
 0.692  
 See Sheet #2  
 For Previous Constr.

(1985)  
 2.222 CO18-E (1) M  
 21' Bit. Mat. Res. 0.178  
 SE-Maint (1954)  
 Oil Aqq 0.700  
 E-68 (1968)  
 20' Oil Aqq Treat 3.107  
 SE-S-188 (1) (1947)  
 G E & Gravel 3.807

CARTER ROUTES  
 018



# CARTER ROUTES 018

0390-DIVISION (1984)  
20' OIL Aq. Treat (MADE IN REYNOLDS)  
1985 (1) 1982  
1985 (1) 1982  
1985 (1) 1982

AVAR (1935)  
24' G.E. & Gravel 5.097  
0.653  
J-GG (1966)  
20' Oil Aq. Treat 3.400  
3.362  
SJ (FHC-NR)-IA (1935)  
24' G.E. & Gravel 5.097  
0.653  
J-GT (1967)  
20' Oil Aq. Treat 3.300

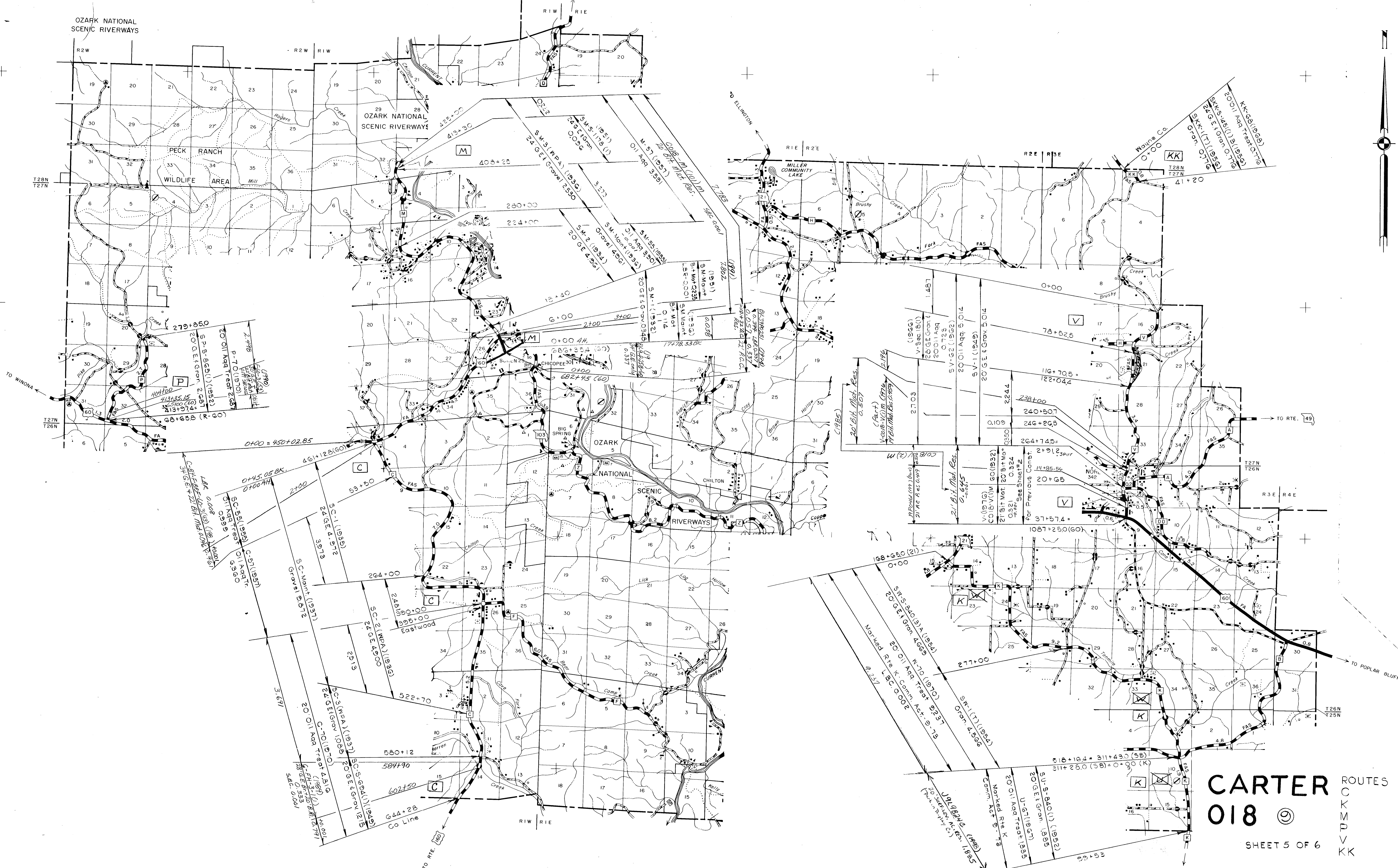
SJ (FH-NR-FHC)-IB (1936)  
24' G.E. & Gravel 2.966  
2.016  
J-GT (1967)  
20' Oil Aq. Treat 3.412

SJ-FHP-IC (1939)  
26' G.E. & Gravel 5.660  
Carter  
County  
Oregon  
County  
1.596  
4.264

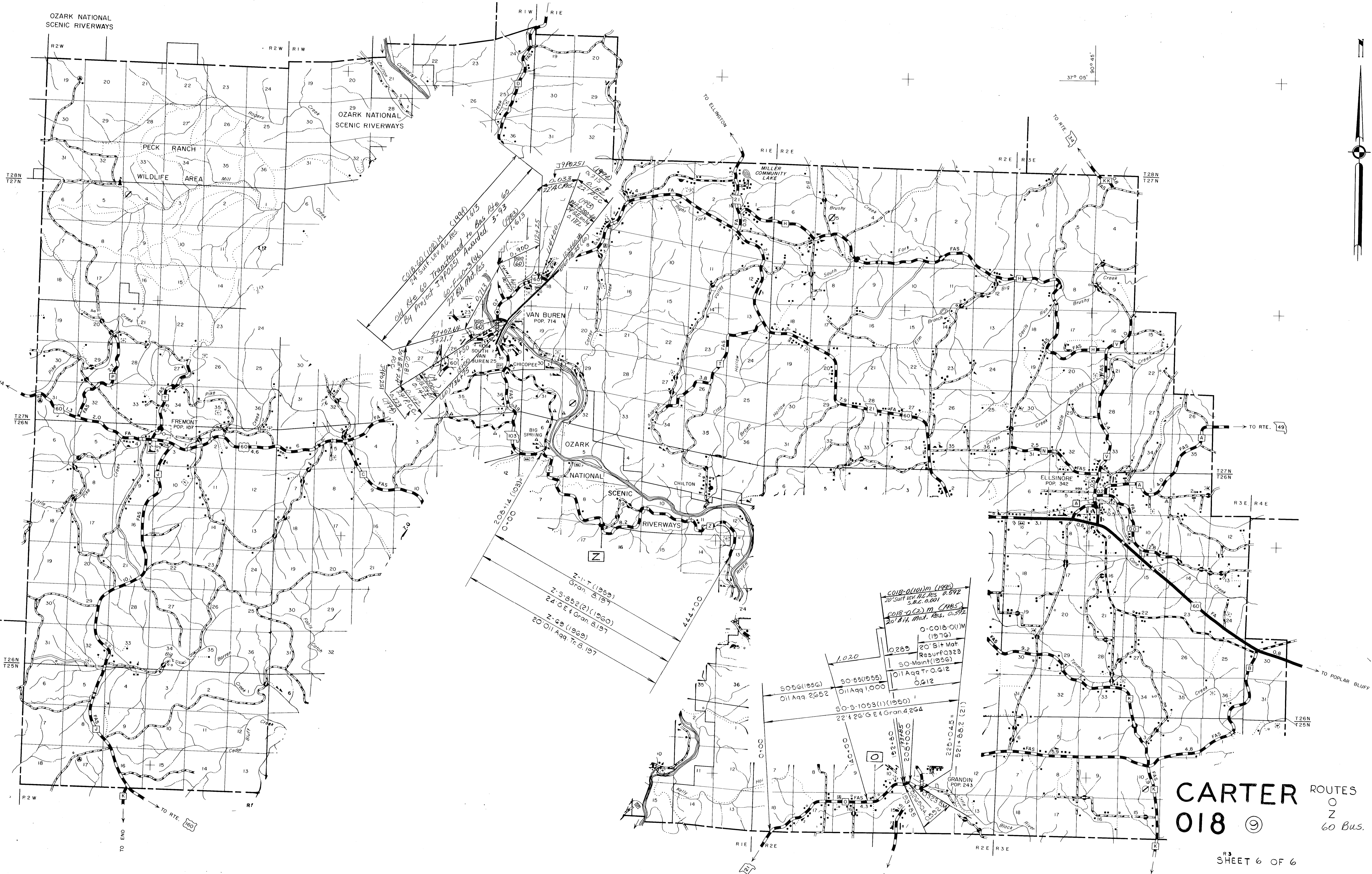
36° 50'

90° 15'

B  
O  
U  
L  
D  
I  
N  
G



**CARTER ROUTES**  
**018**   
K K K K K K K K  
SHEET 5 OF 6



*COB-60 (102) M (1960)  
24 Suff. Lev. AC. Res. 1.613  
Old Rte 60 Transferred to Bus Rte 60  
By Project 590251 Awarded 3-93 (1968)  
60-1-40-5 (46)  
22 BH Mat. Res. 1.613*

*2-1-T (1960)  
Gran. 8.197  
2-9-852(2) (1960)  
24 GE4 Gran 8.197  
2-62 (1960)  
20 Oil Aq. Tr. 8.197*

*COB-0101 M (1960)  
20 Suff Lev. AC. Res. 0.592  
S.B.C. 0.001  
COB-022 M (1965)  
20 BH Mat. Res. 0.592  
O-COB-011 M (1976)  
0.269 20 BH Mat. Resurf 0.323  
SO-Maint (1956)  
Oil Aq. Tr. 0.612  
0.612*

*50-56 (1956)  
Oil Aq. 2.652  
50-55 (1955)  
Oil Aq. 1.000  
50-5-1053 (1) (1950)  
22' 26" GE4 Gran. 4.264*

**CARTER**  
**018**   
ROUTES  
O  
Z  
60 Bus.