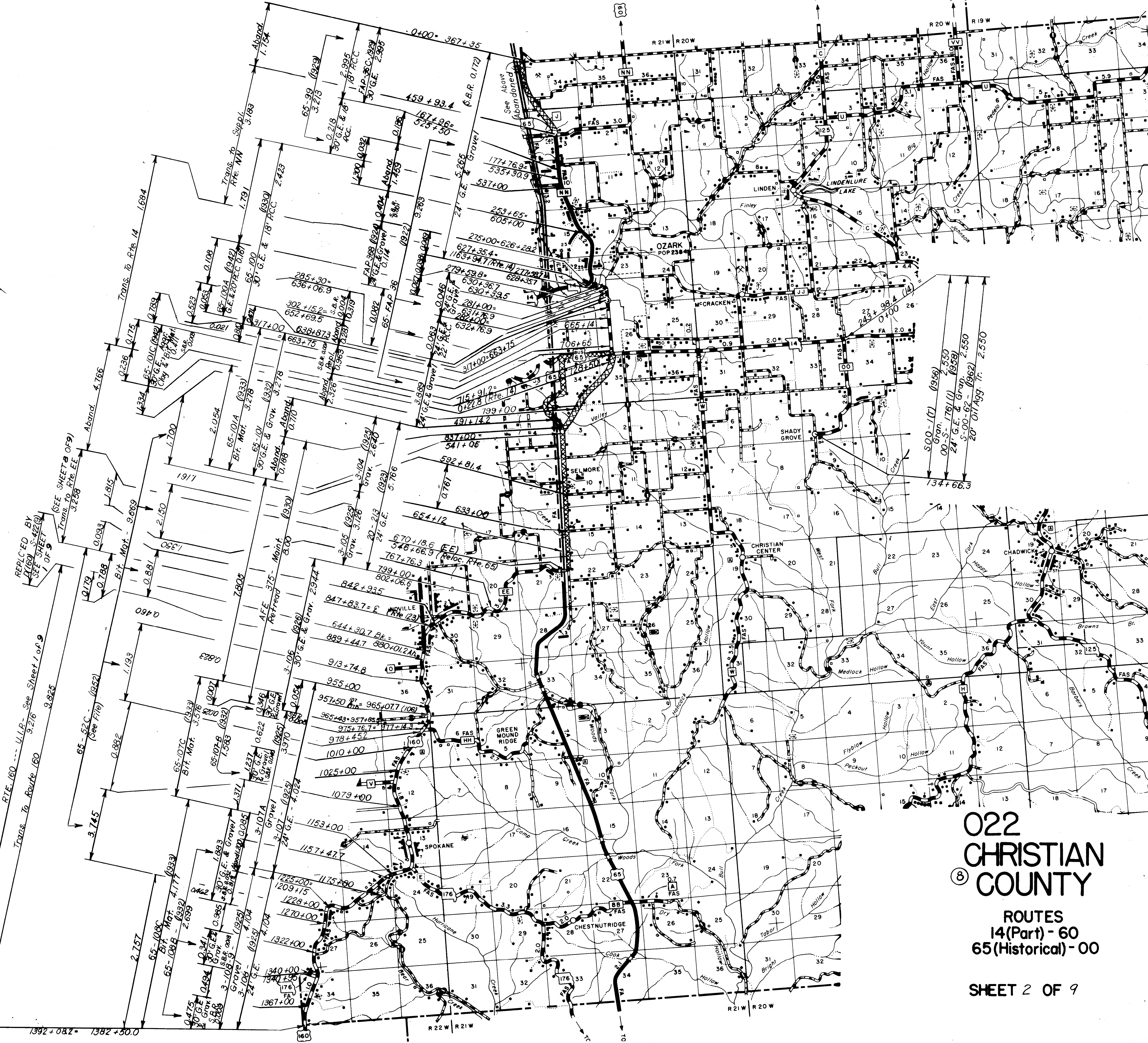
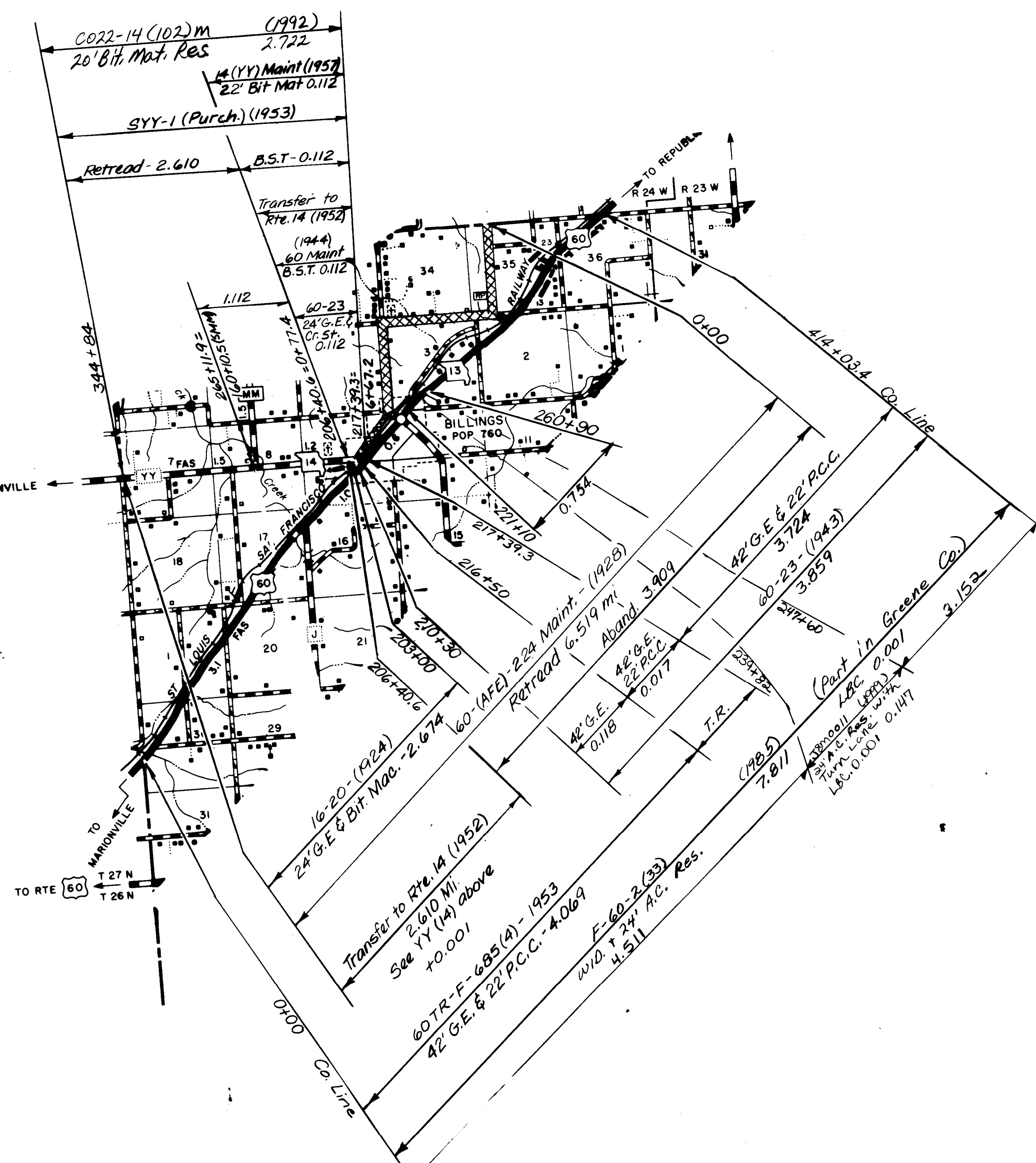


022
CHRISTIAN
Ⓢ COUNTY

ROUTES
 13-160 - W-VV



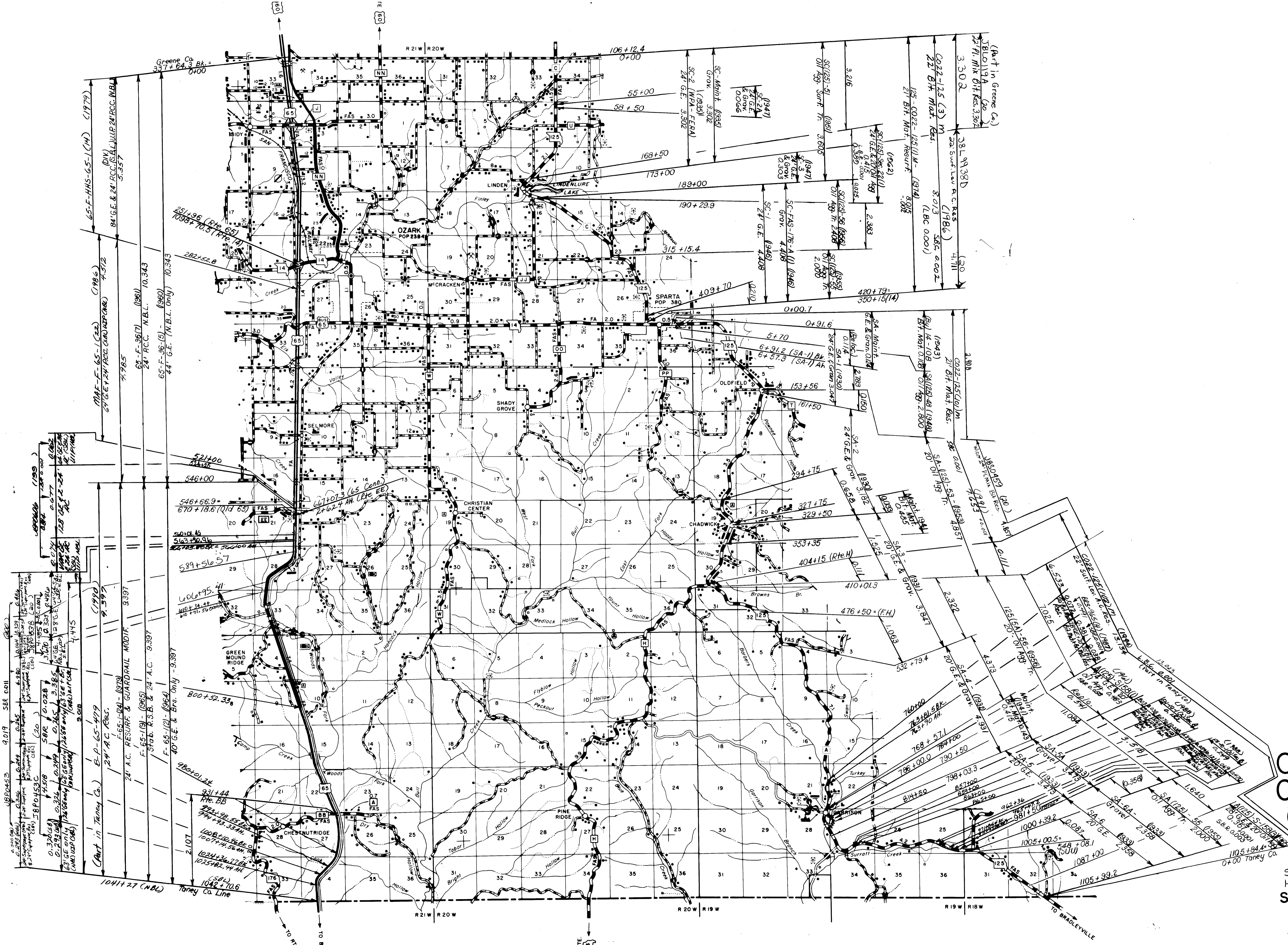
022
CHRISTIAN
COUNTY

ROUTES
14(Part) - 60
65(Historical) - 00

SHEET 2 OF 9

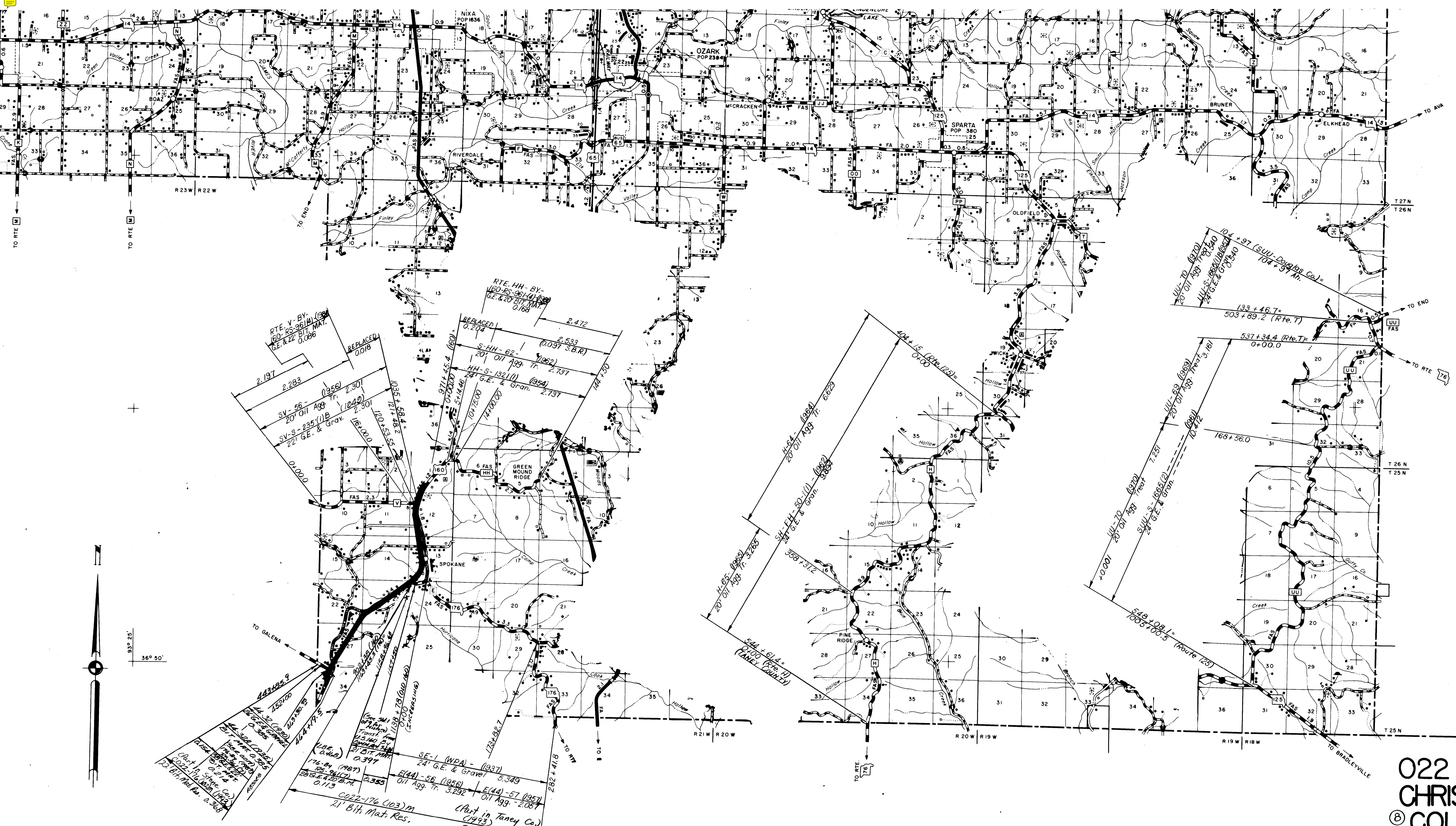


022
 CHRISTIAN
 COUNTY
 ROUTES
 14(Part)-KK
 SHEET 3 OF 9

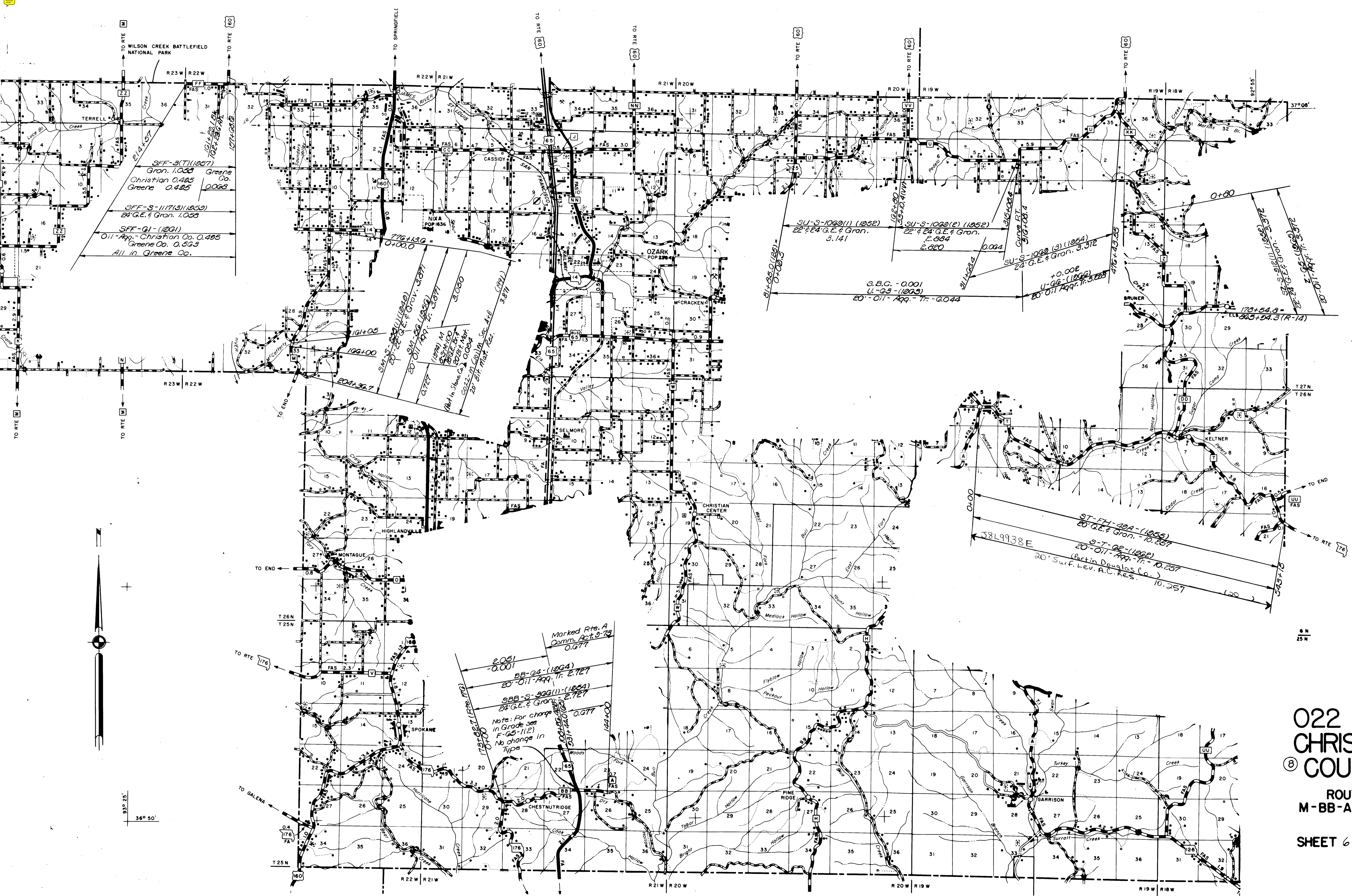


022 ⑧ CHRISTIAN COUNTY

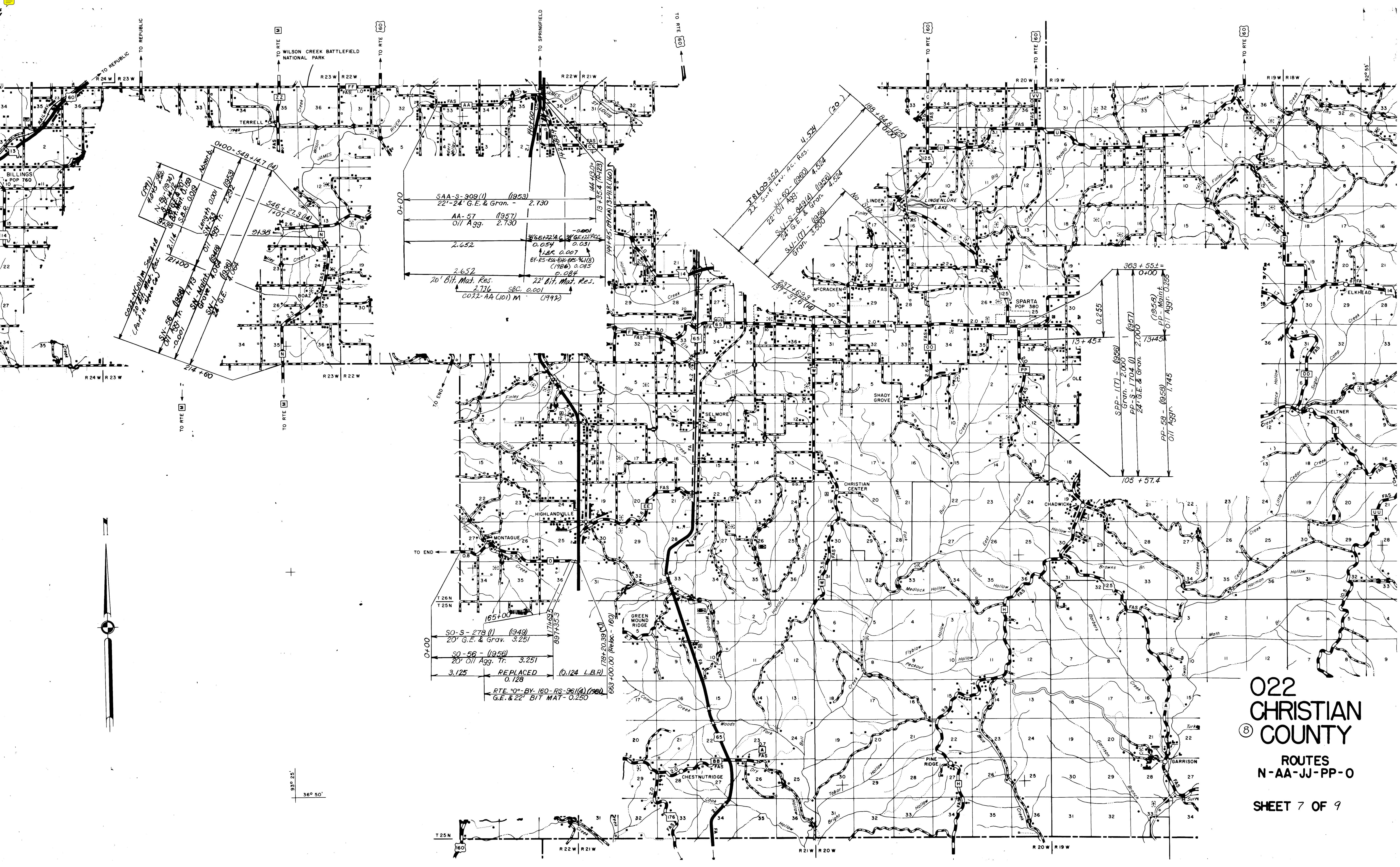
ROUTES
65-125
SEE SHEET 2 FOR
HISTORICAL U.S. 65
SHEET 4 OF 9



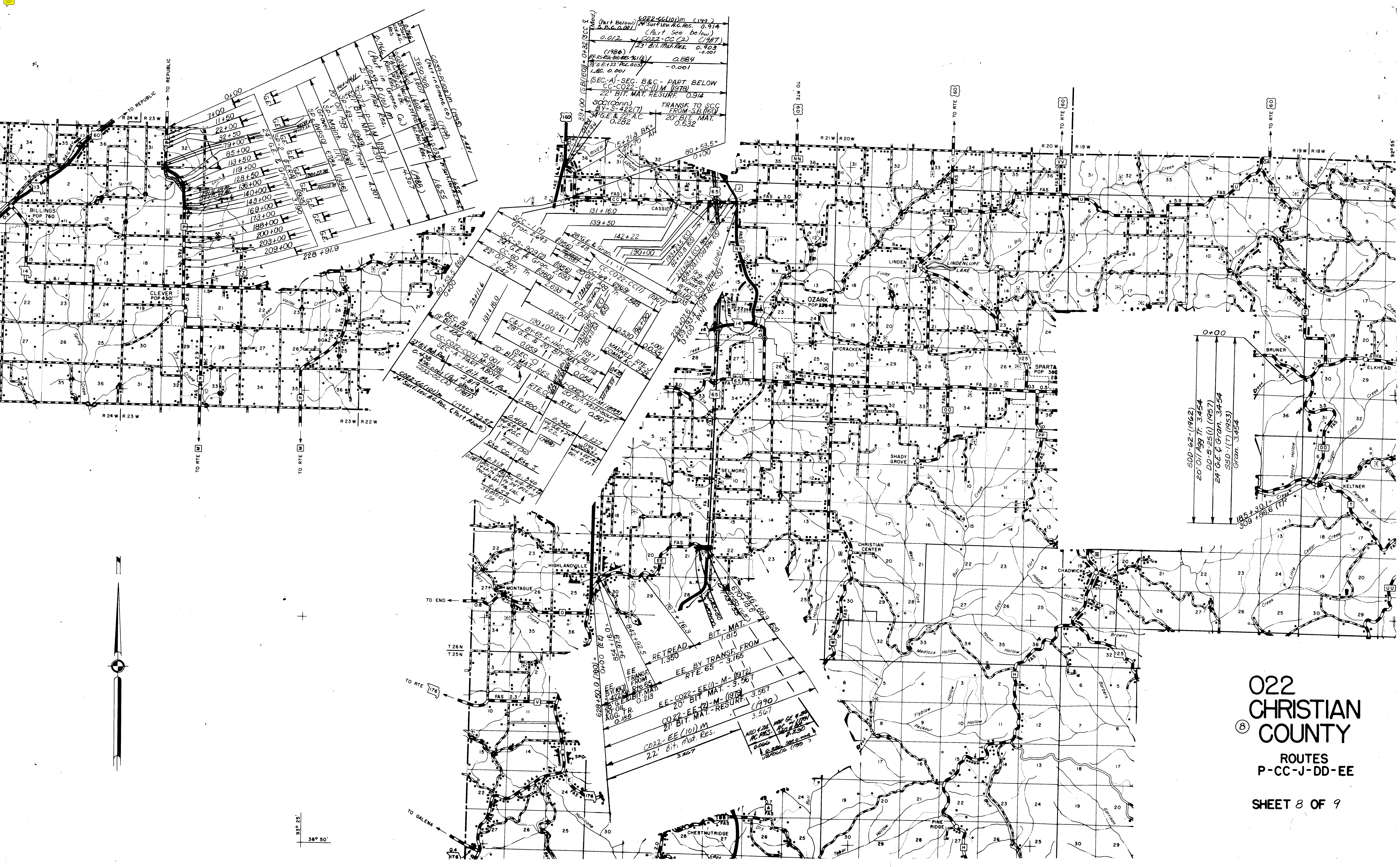
022
 CHRISTIAN
 COUNTY
 ROUTES
 176-H-HH-V-UU
 SHEET 5 OF 9



022
 CHRISTIAN
 COUNTY
 ROUTES
 M-BB-A-U-Z-T
 SHEET 6 OF 9



022
 CHRISTIAN
 COUNTY
 ROUTES
 N-AA-JJ-PP-O
 SHEET 7 OF 9



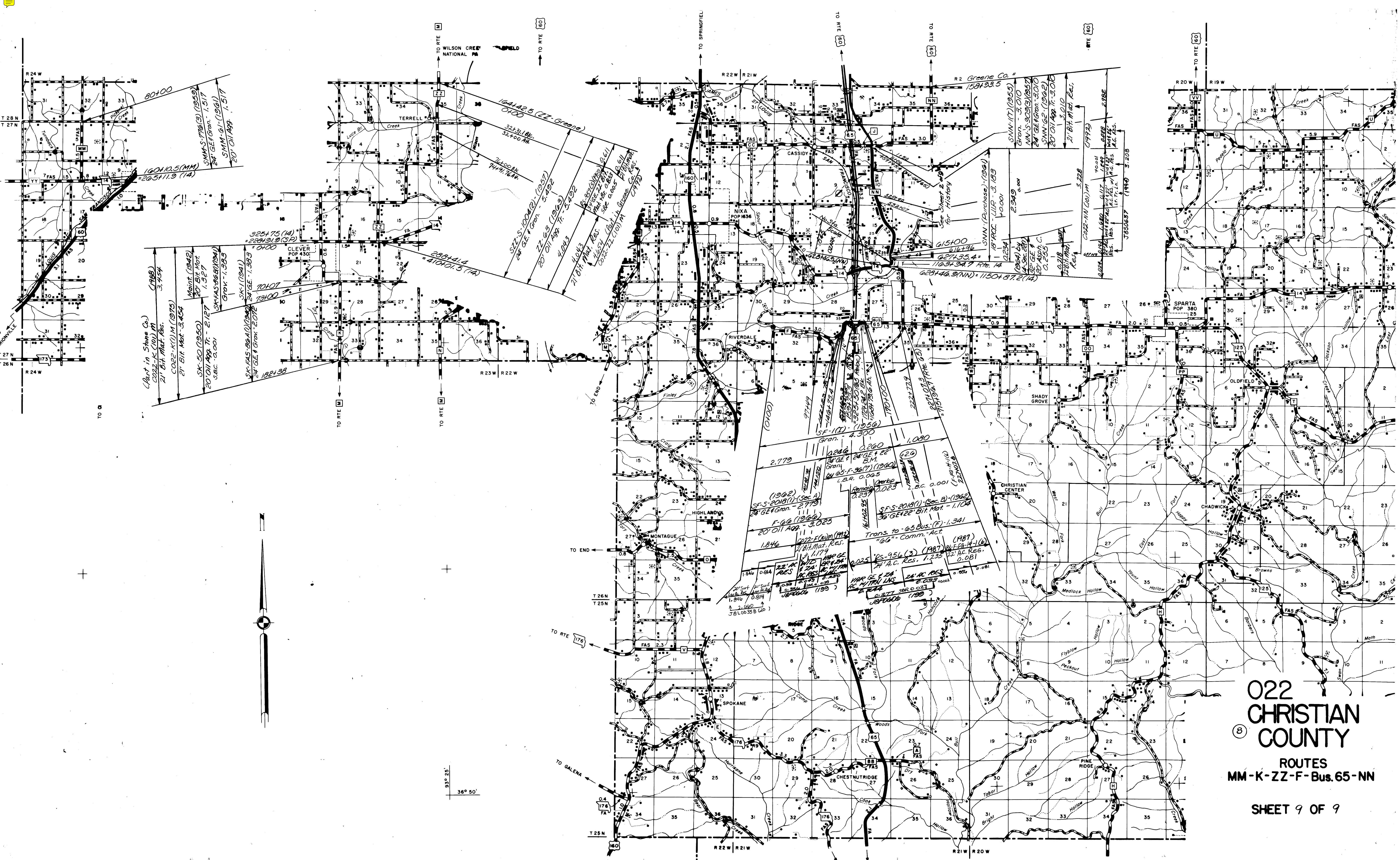
(Part Below) **CO22-CC(10)M (1997)**
 24' Surf. Lev. A.C. Res. 0.914
 S.P.G. & G. (1997)
 (Part See below)
0.012
CO22-CC (2) (1987)
 23' Bit. Mat. Res. 0.903
 (1986)
 W. Res. Lev. A.C. Res. 0.884
 S.P.G. & G. (1986)
 L. & 0.001
 (SEC. A) - SEC. B & C - PART BELOW
CC-CO22-CC(1)M (1979)
 22' BIT. MAT. RESURF. 0.914
SCC(Conn.)
 BY S-422(7)
 34' G.E. & 27' A.C.
 20' BIT. MAT.
 0.282
TRANSF. TO SCC
FROM S.B. (160)
 0.632

CC-CO22-CC(1)M (1967)
 20' BIT. MAT. RESURF.
 0.956
CC-CO22-CC(1)M (1969)
 20' BIT. MAT. RESURF.
 0.956
CC-CO22-CC(1)M (1969)
 20' BIT. MAT. RESURF.
 0.956
CC-CO22-CC(1)M (1969)
 20' BIT. MAT. RESURF.
 0.956
CC-CO22-CC(1)M (1969)
 20' BIT. MAT. RESURF.
 0.956
CC-CO22-CC(1)M (1969)
 20' BIT. MAT. RESURF.
 0.956

CO22-EE(10)M (1972)
 21' BIT. MAT. RESURF. 3.567
CO22-EE(12)M (1979)
 21' BIT. MAT. RESURF. 3.567
CO22-EE(10)M (1972)
 22' BIT. MAT. RESURF. 3.267
EE BY TRANSF. FROM
RTE. 65
 3.165
RETREAD
 1.350
EE TRANSF. FROM
RTE. 65
 3.567
EE BY TRANSF. FROM
RTE. 65
 3.567
EE BY TRANSF. FROM
RTE. 65
 3.567
EE BY TRANSF. FROM
RTE. 65
 3.567

SDD-62 (1962)
 20' Oil Agg. Tr. 3.454
DD-S-25(1) (1957)
 24' G.E. & Gran. 3.454
SDD-1(T) (1953)
 Gran. 3.454

022
CHRISTIAN
COUNTY
 ROUTES
 P-CC-J-DD-EE
 SHEET 8 OF 9



022 CHRISTIAN COUNTY

ROUTES
MM-K-ZZ-F-Bus.65-NN

SHEET 9 OF 9