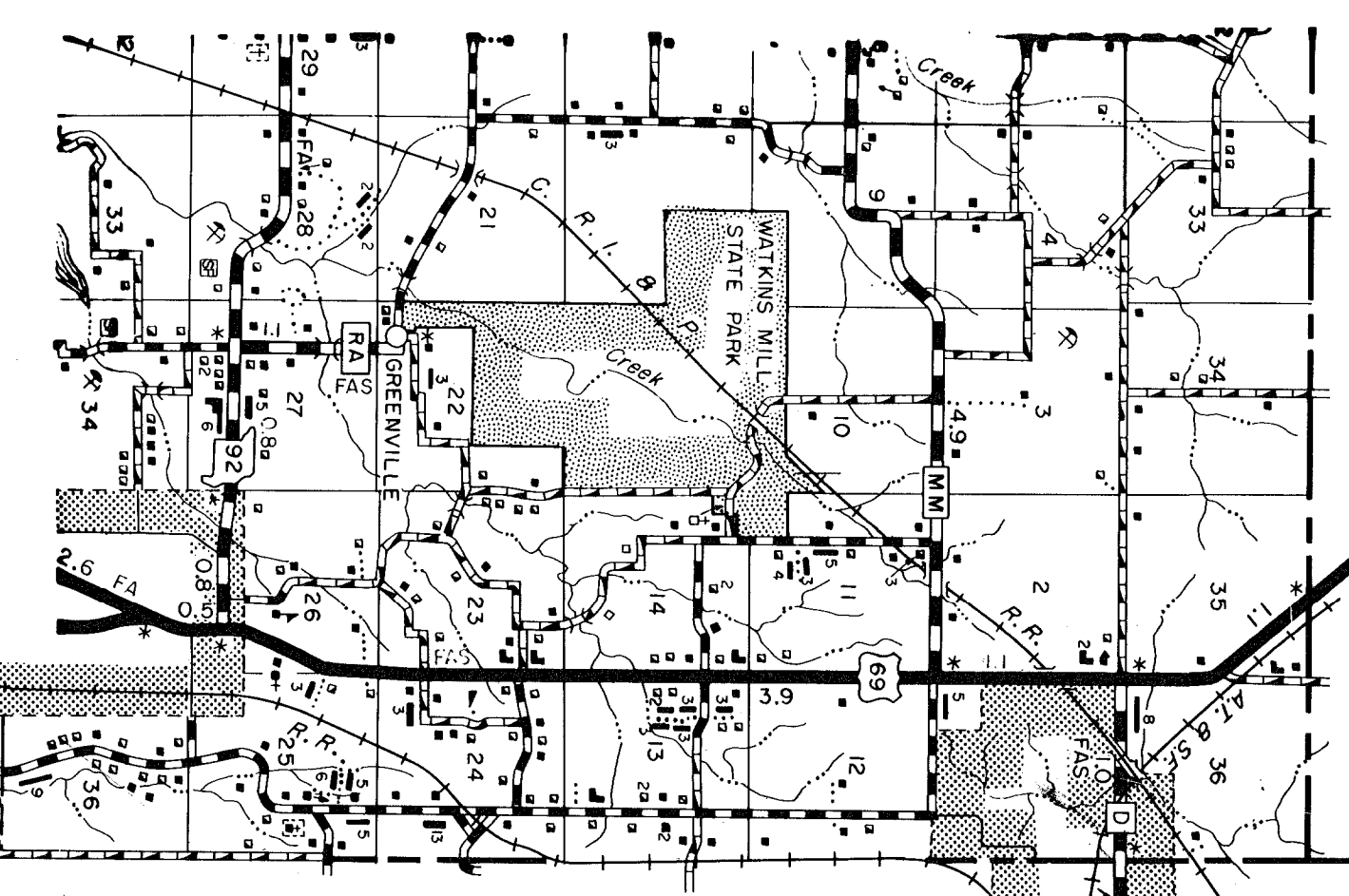
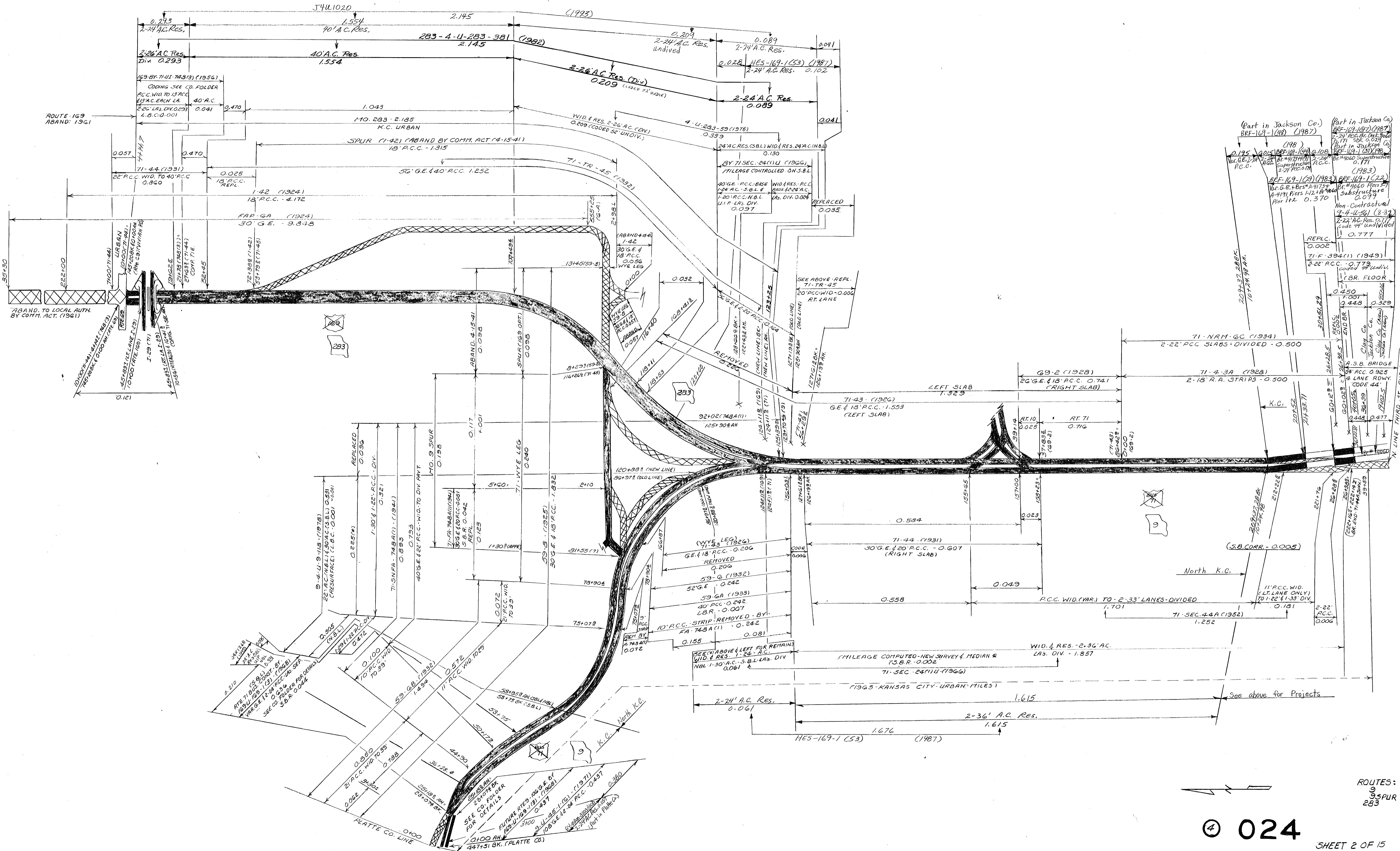


ROUTES  
E  
DD

CLAY  
024

SHEET 1 OF 15





(Part in Jackson Co.)  
 BRF-169-1 (48) (1987)

(198)  
 BRF-169-1 (48) (1987)

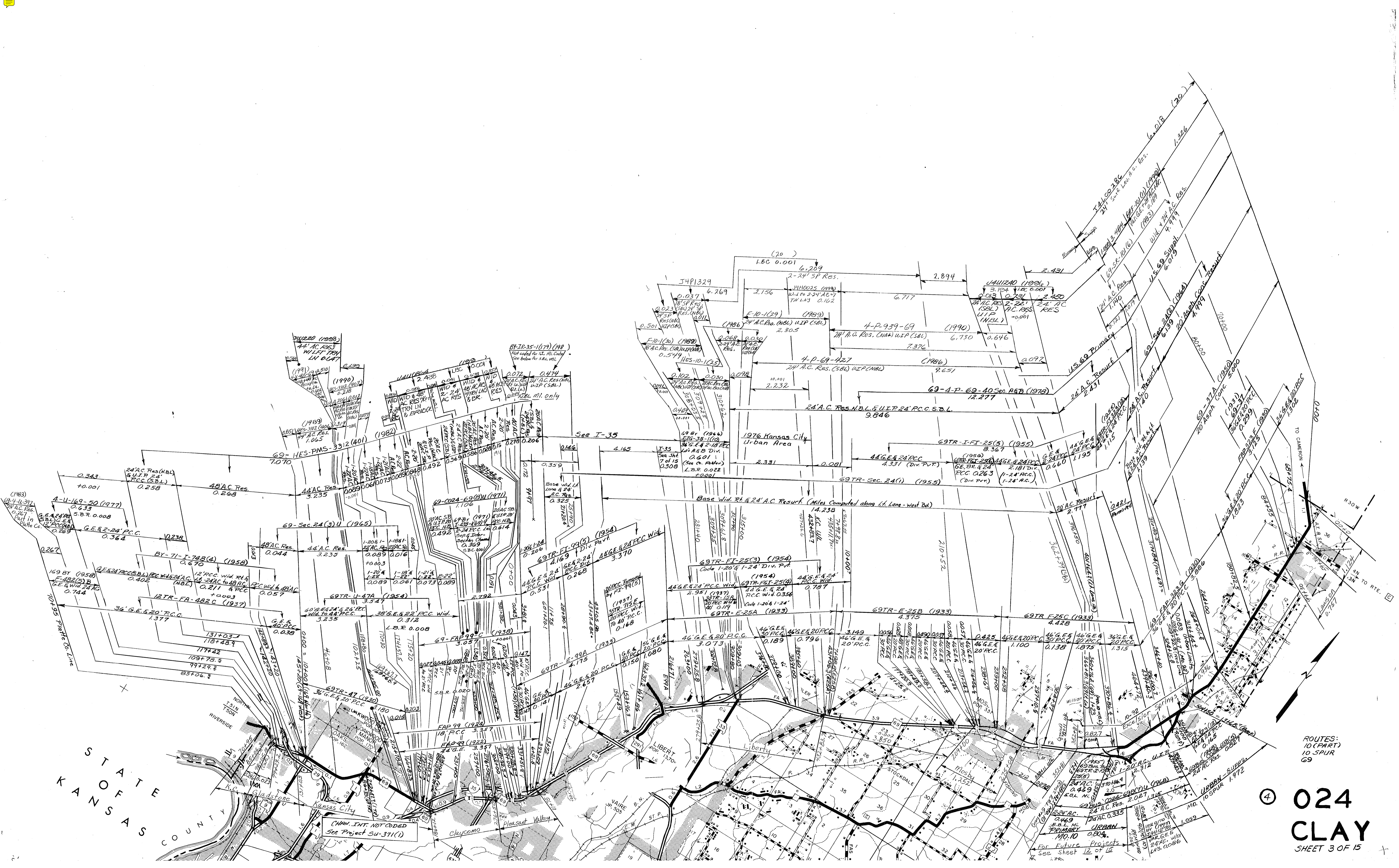
(1983)  
 BRF-169-1 (48) (1987)

(1987)  
 BRF-169-1 (48) (1987)

(1987)  
 BRF-169-1 (48) (1987)

(1987)  
 BRF-169-1 (48) (1987)

ROUTES:  
 9  
 9 SPUR  
 283



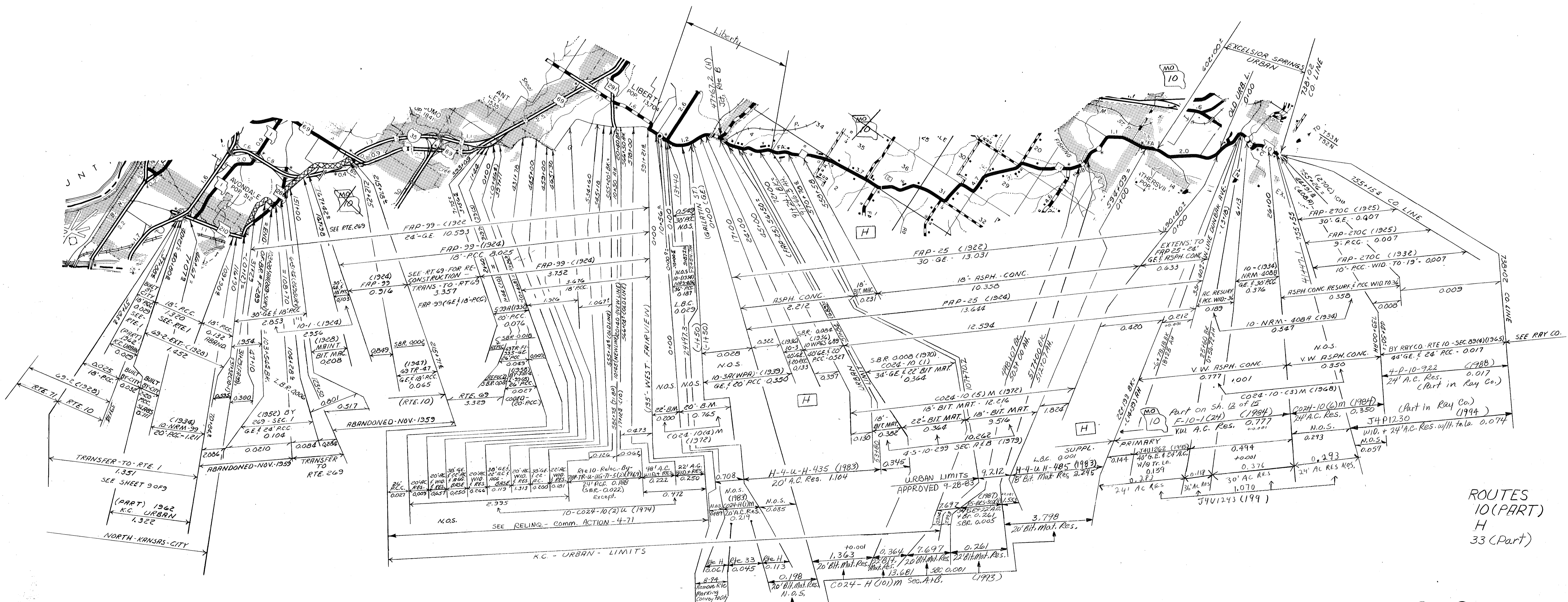
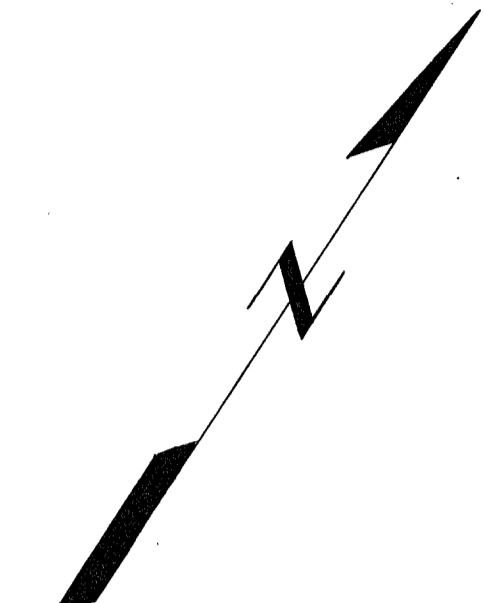
KANSAS COUNTY

(CHAM. INT. NOT CODED  
See Project SU-371(1))

ROUTES:  
10 (PART)  
10-SPUR  
69

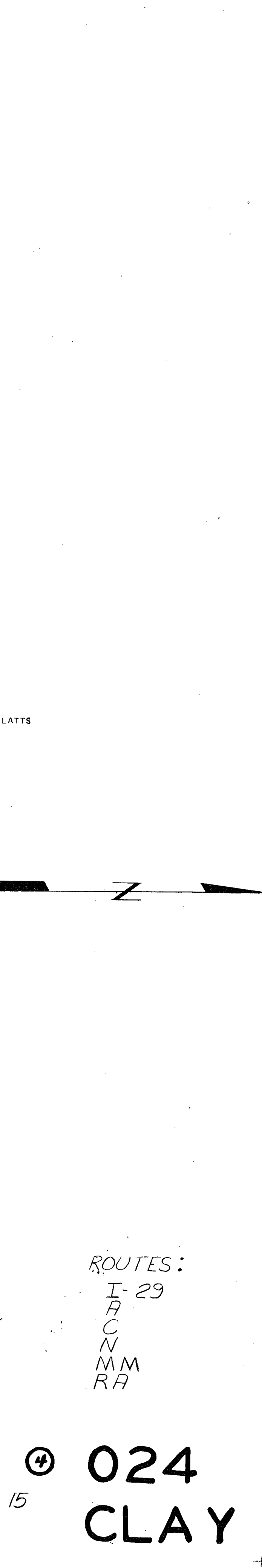
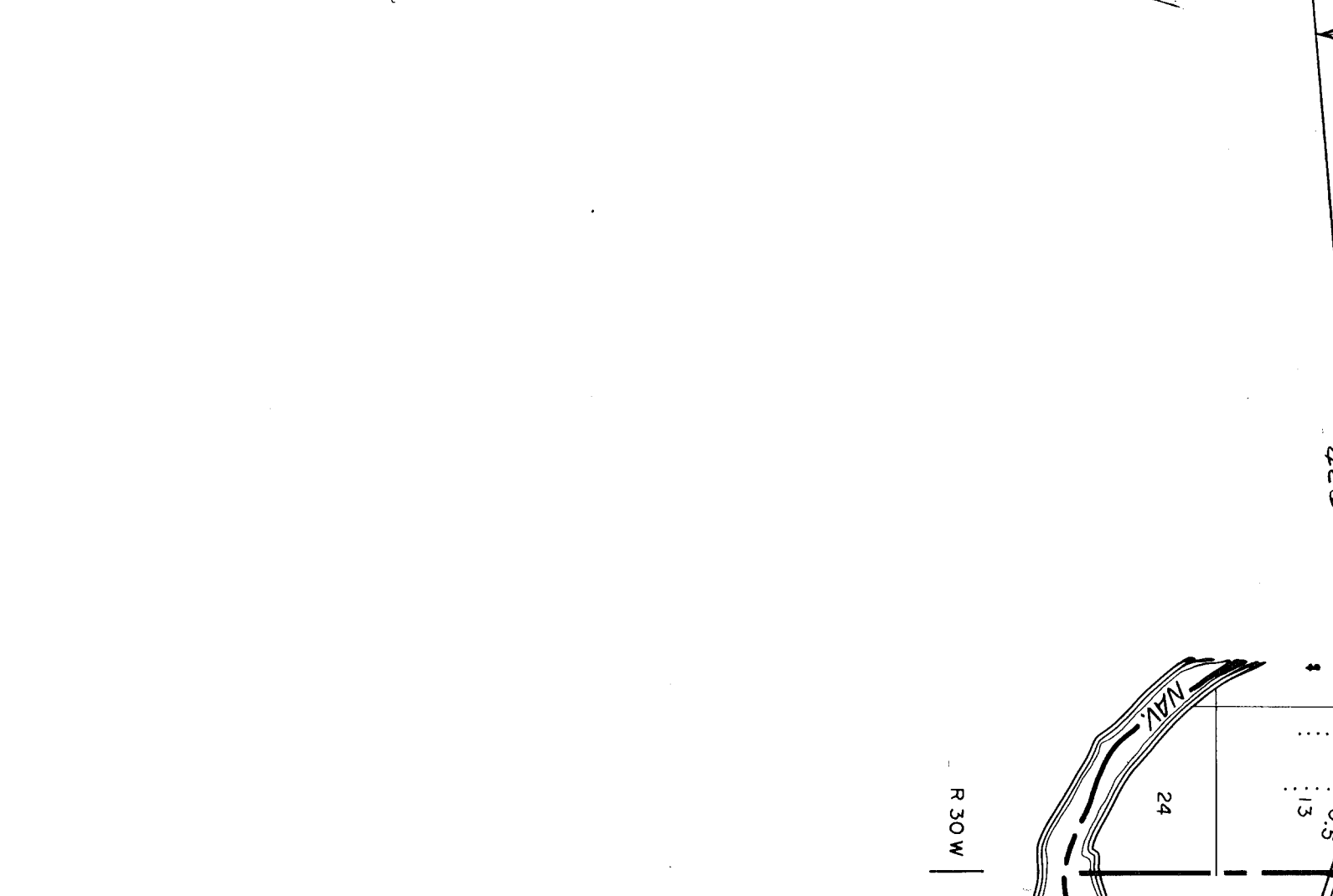
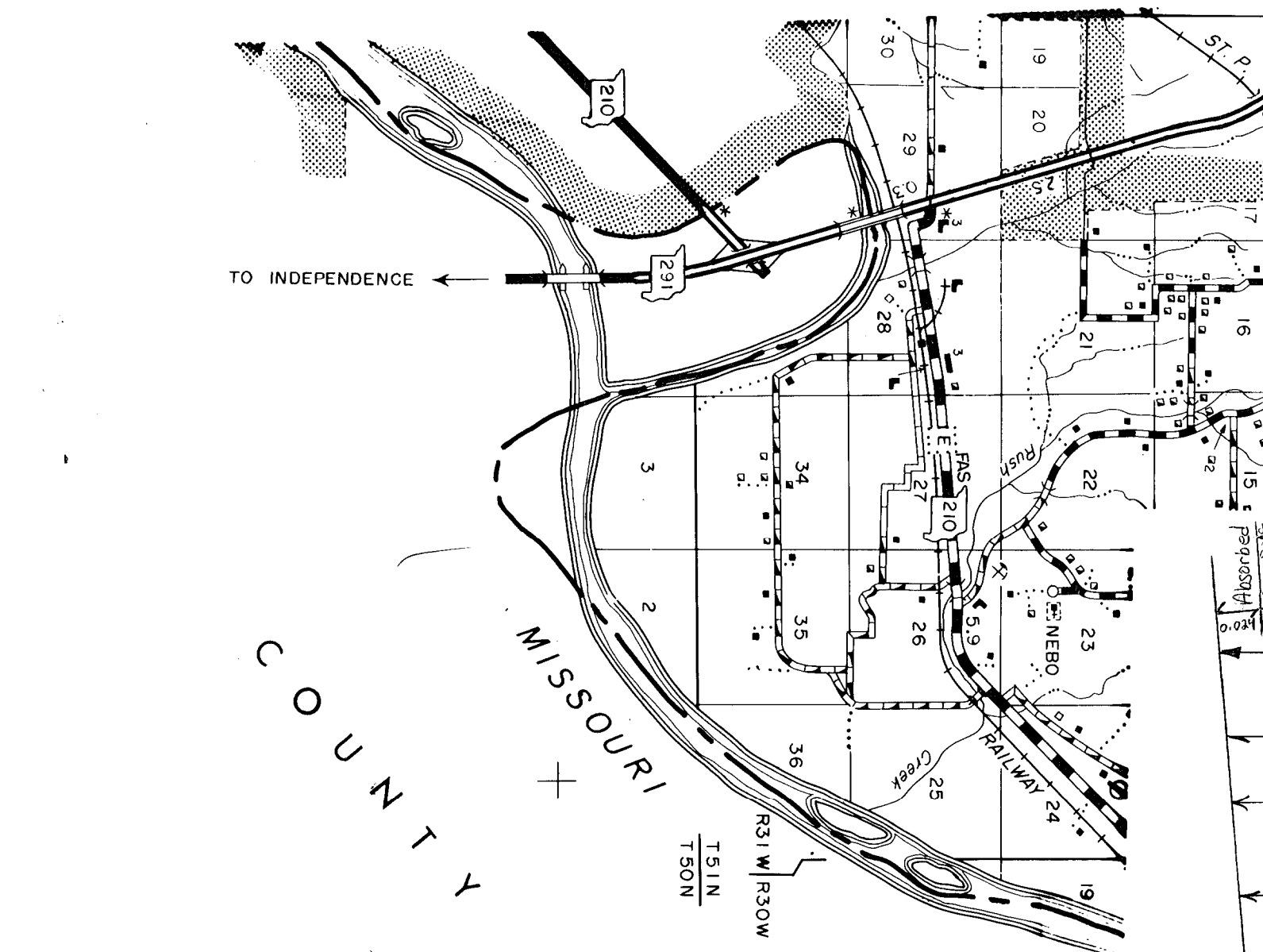
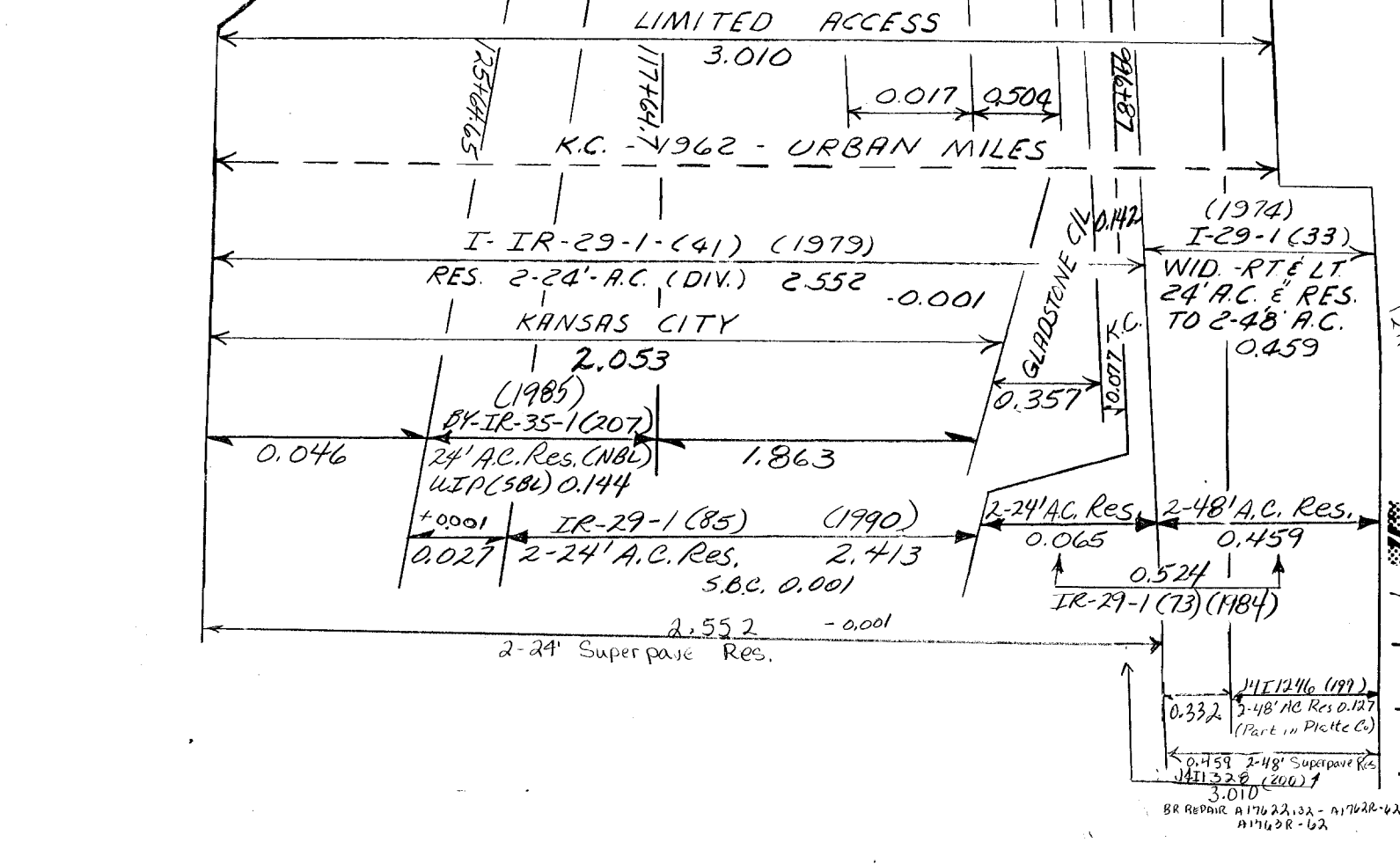
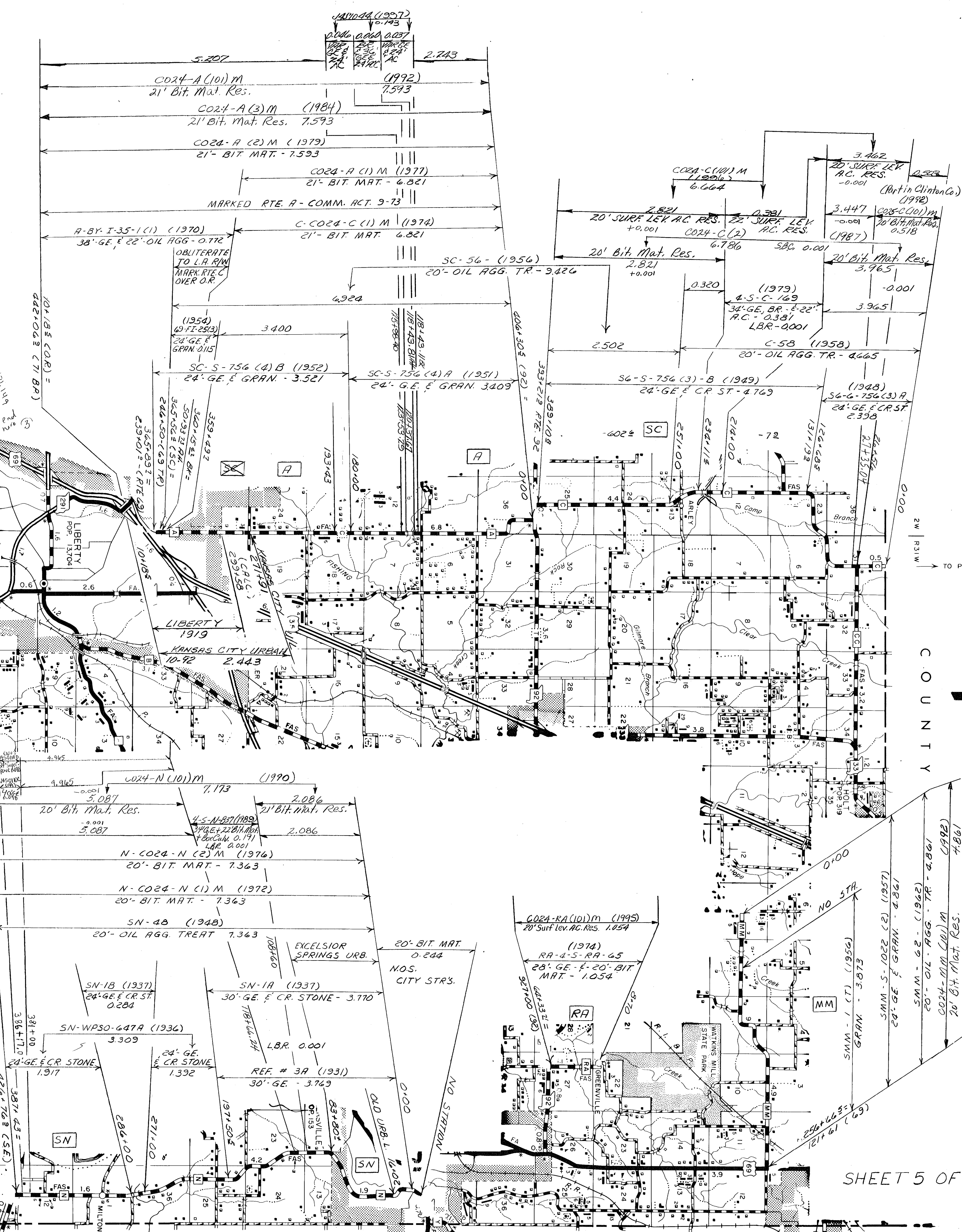
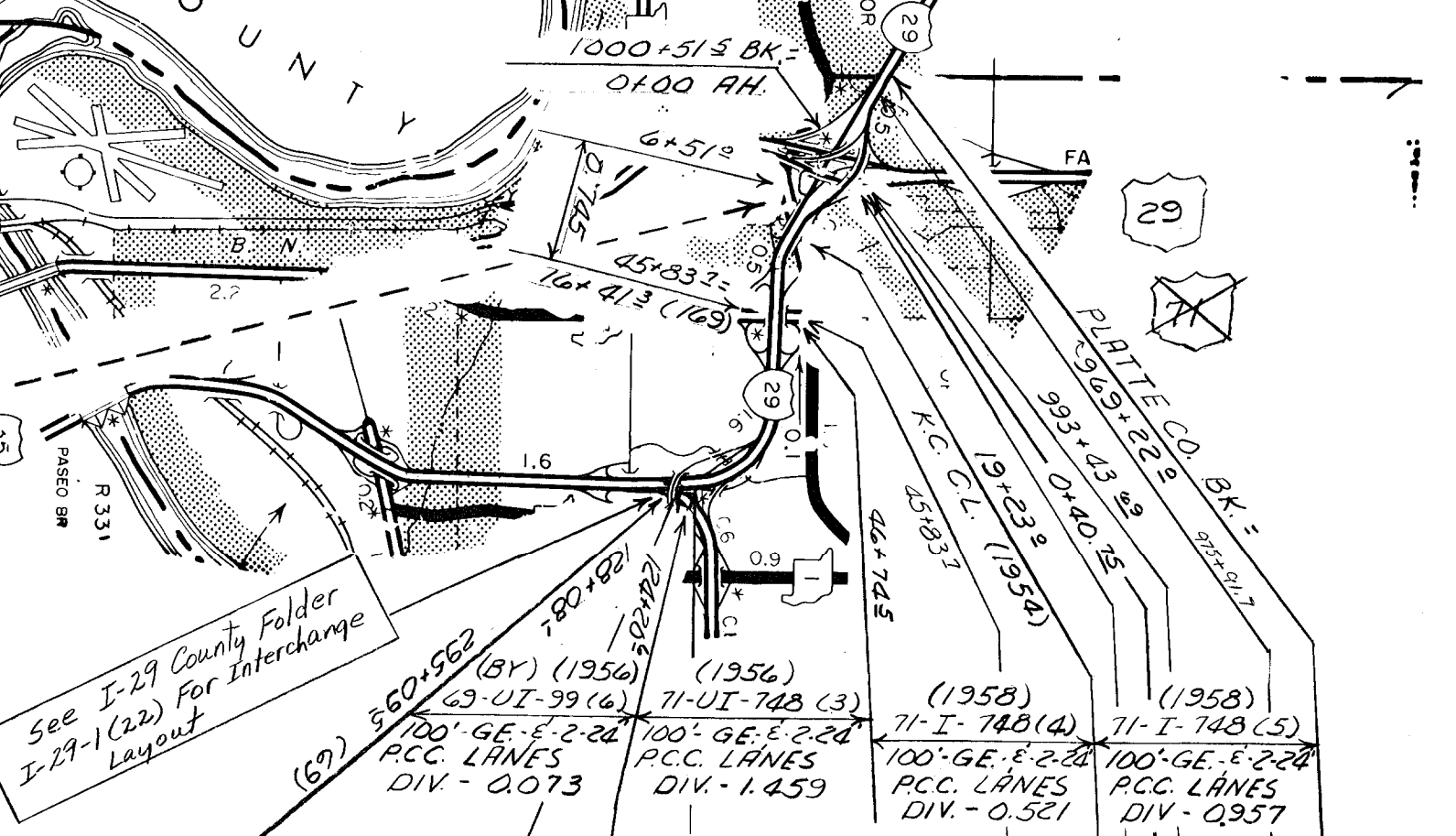
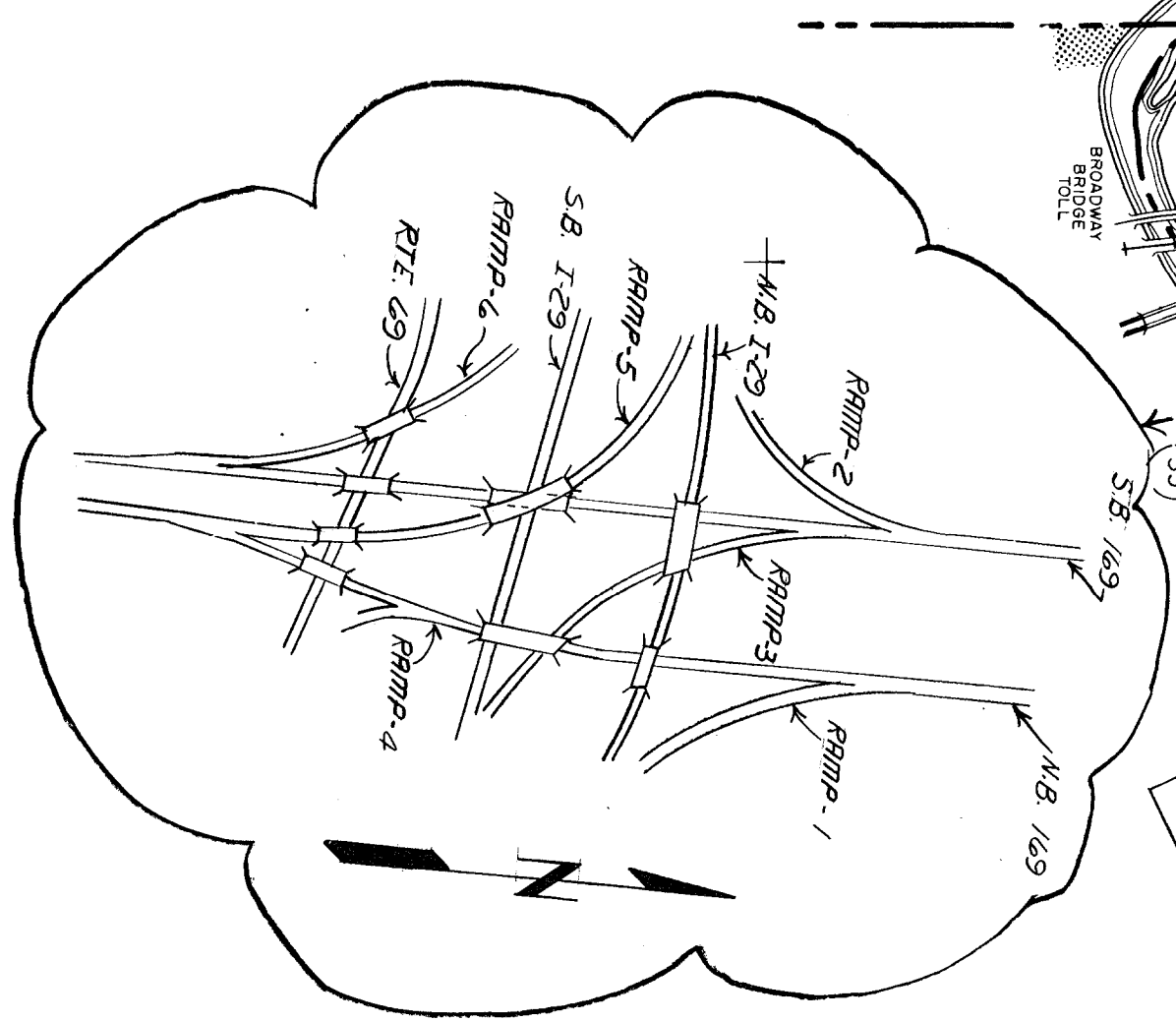
024  
CLAY  
SHEET 3 OF 15

For Future Projects  
See sheet 12 of 15



ROUTES  
10(PART)  
H  
33(PART)

024  
CLAY



- ROUTES:
- I-29
  - A
  - C
  - MM
  - RA

CLINTON COUNTY



"NOTE:-  
SEE - AN  
URBAN - MAP  
#9 OF 22-FOR-TYPE  
8' WIDTH BY R.V.N

LIBERTY

107136  
133172.8  
135191.8  
162185.8  
RTE. 11.0B

107136  
133172.8  
135191.8  
162185.8  
RTE. 11.0B

WILSON  
MILLER  
MISSISSIPPI  
FRANKLIN  
KANSAS  
MCCARTY  
MILL ST.  
SHRADER  
ARTHUR  
PINE  
MURRAY RD.  
BROWN  
BROWN  
HURRY  
RTE. 33  
EDWARD

171115.8  
643103.2 (718.P)

(Part Above)  
1994  
CO24-33 (102) (1994)  
24 SURF LEV. A.C. RES. 1.257  
BY MES-IP-125 (1994)  
BY AC. RES. 0.030

1992  
ALL K.C. URBAN 1973  
33-4-U-33-60 (1974)  
34 AC. WID. RES. 2.028  
34 AC. WID. RES. 2.028

1987  
SE 1/4 SEC. 20.031  
S.B.R. 0.027  
C.M.L. 24'

1879 0.058  
REF. 5 (1983)  
P. 1 (1983)

35 TR. 15A (1957)  
36 G.E. 120 P.C.C. 2.025  
1+90'S

101113  
107136

LIBERTY  
P. 13,704

1000 (NEW LINE)  
G.A.Z. 190E  
S.B.L. 11-B.R. TR.  
IRE 05

10.001  
(SEE CO. FOLDER)

(REF. LINED)

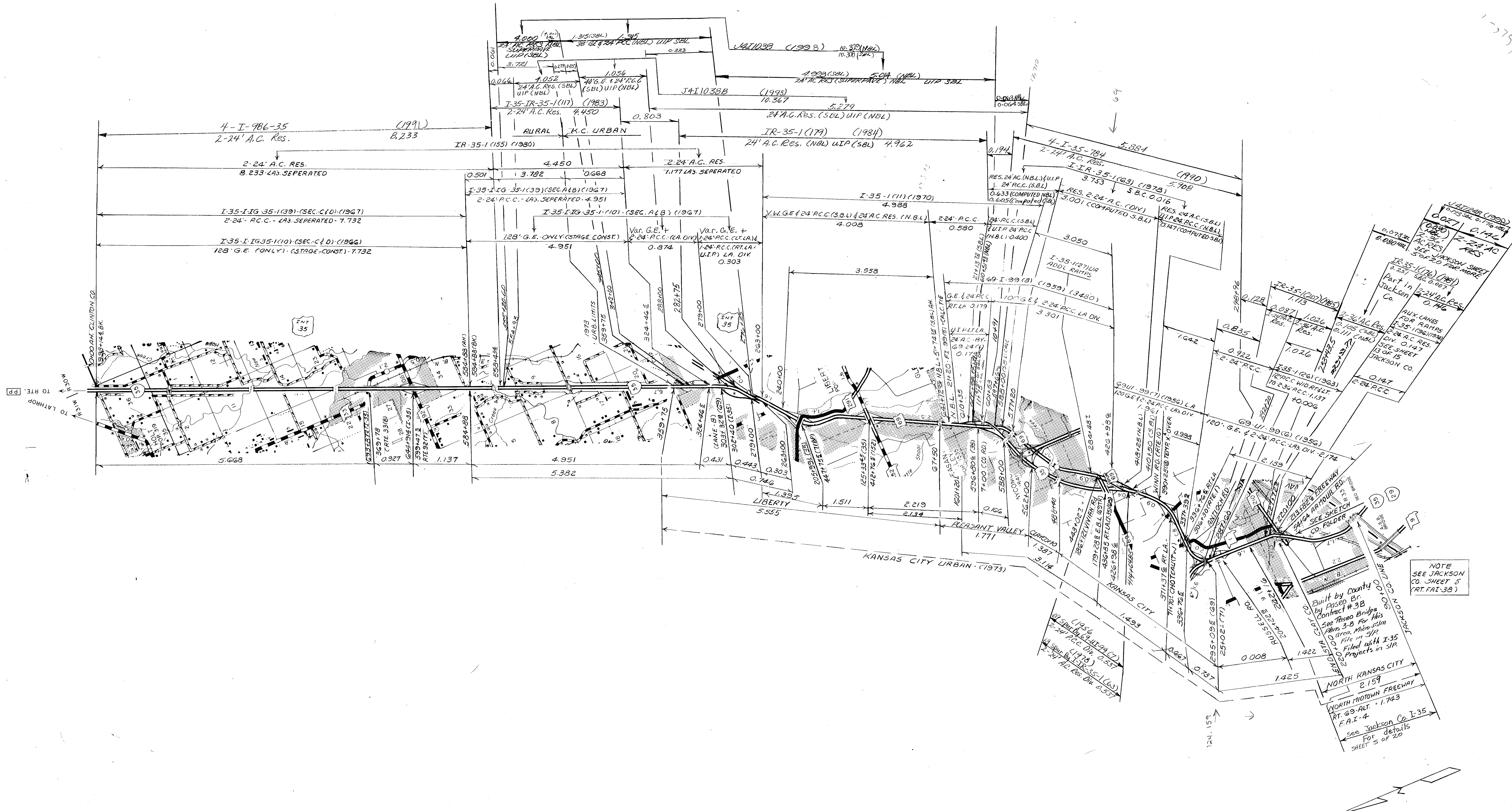
0.030

35 TR. PAP. 718E (1937)  
G.E.F. 24 P.C.C. 0.187

1000 (NEW LINE)  
G.A.Z. 190E  
S.B.L. 11-B.R. TR.  
IRE 05

ROUTES:  
33 (PART)  
B

④ 024 SHEET 6 OF 15  
CLAY



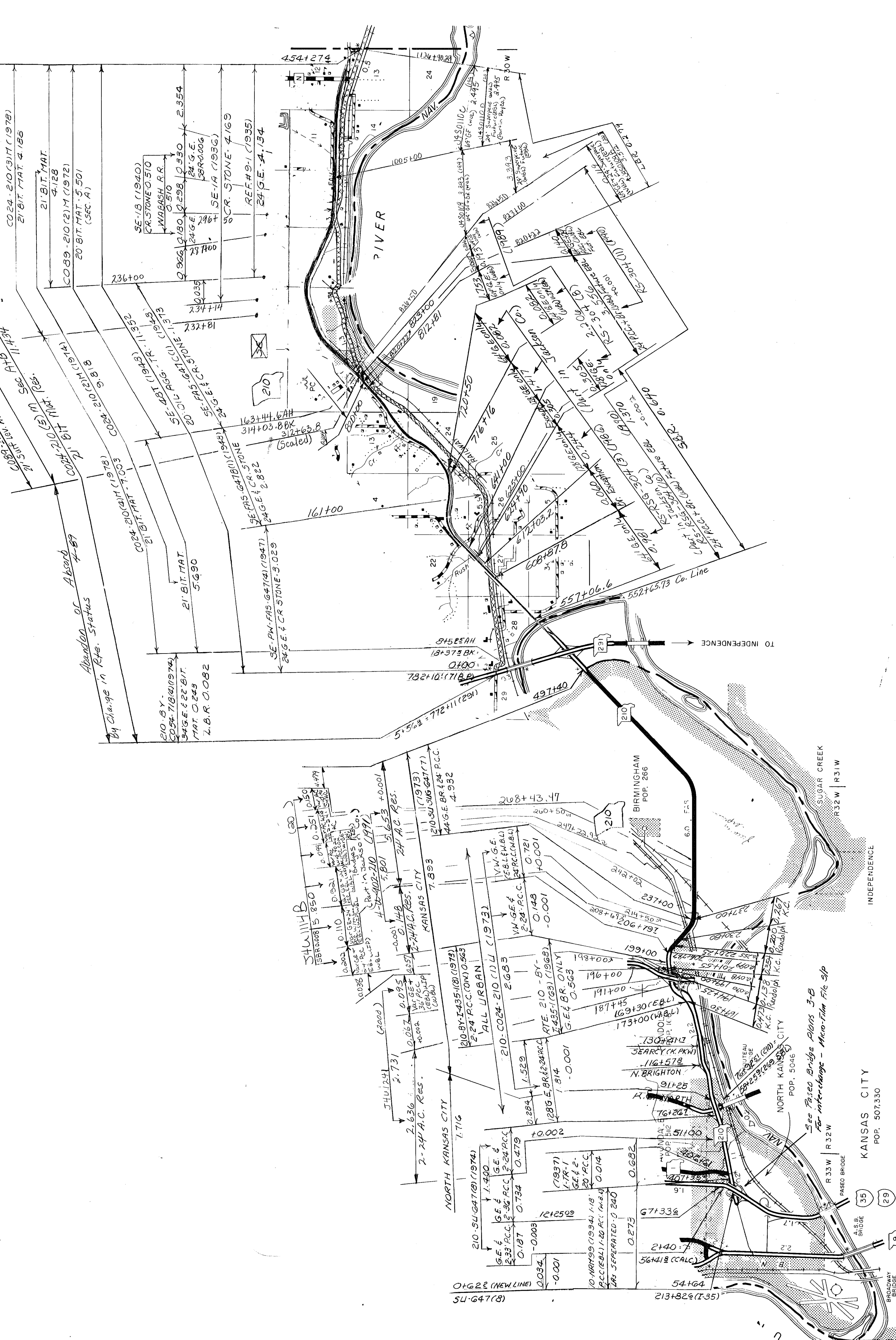
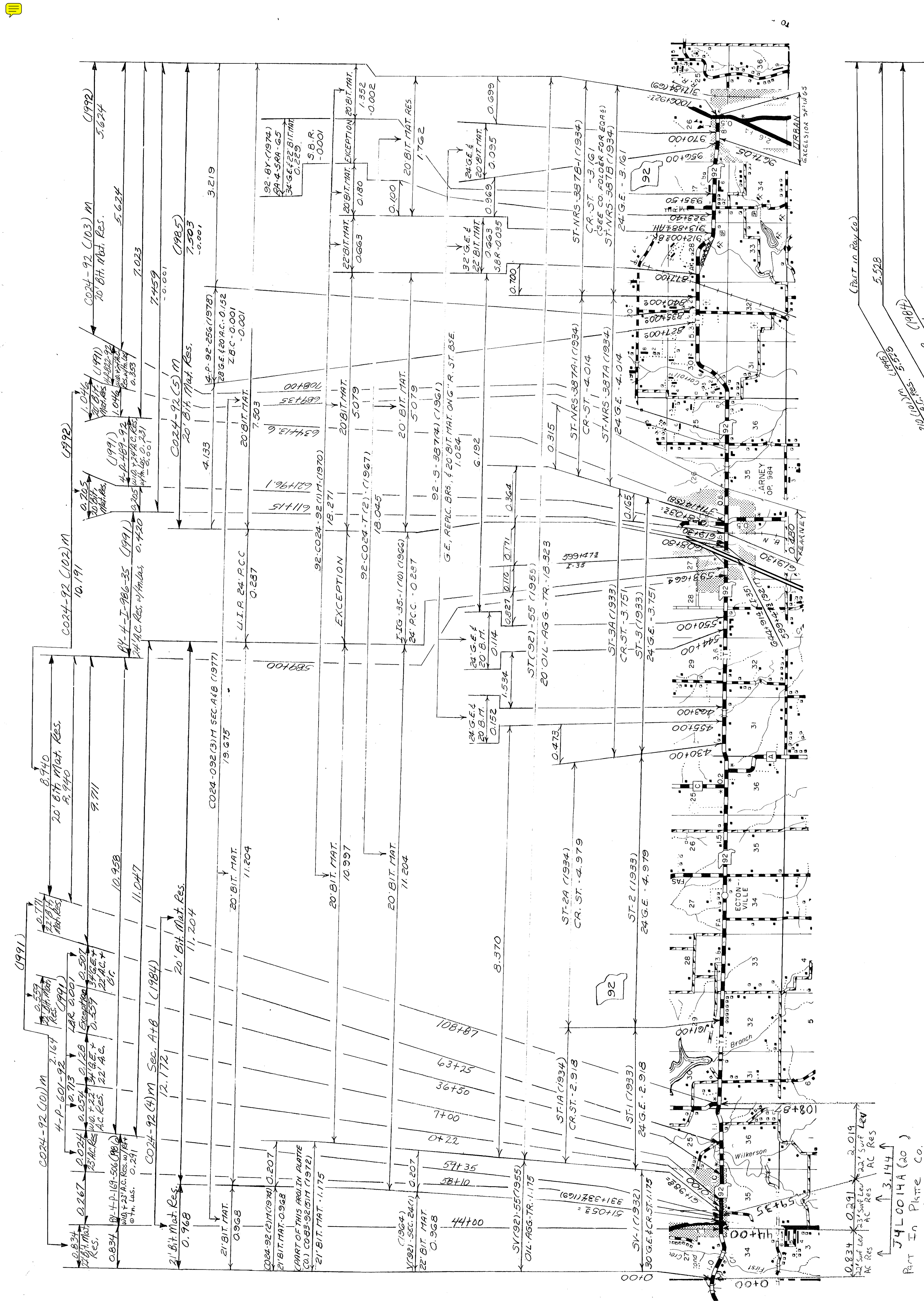
NOTE  
SEE JACKSON  
CO. SHEET 5  
(RT. FAI-38)

Built by County  
by Passed Br.  
Contract # 38  
See Paved Bridge  
Plans 3-B for this  
Area. Microfilm  
File in 312  
Filed with I-35  
Projects in 31A.

1425  
NORTH KANSAS CITY  
2159  
NORTH MIDTOWN FREEWAY  
RT. 69 ALT. - 1743  
E.A.I.-4  
see Jackson Co. I-35  
For  
details  
SHEET 5 OF 20

ROUTES:  
I-35 JACKSON 5 OF 20 MORE  
69 SPUR

024  
CLAY  
SHEET 7 OF 15



JACKSON

KANSAS CITY  
POP. 507,330

POP. IN CLAY 56,368

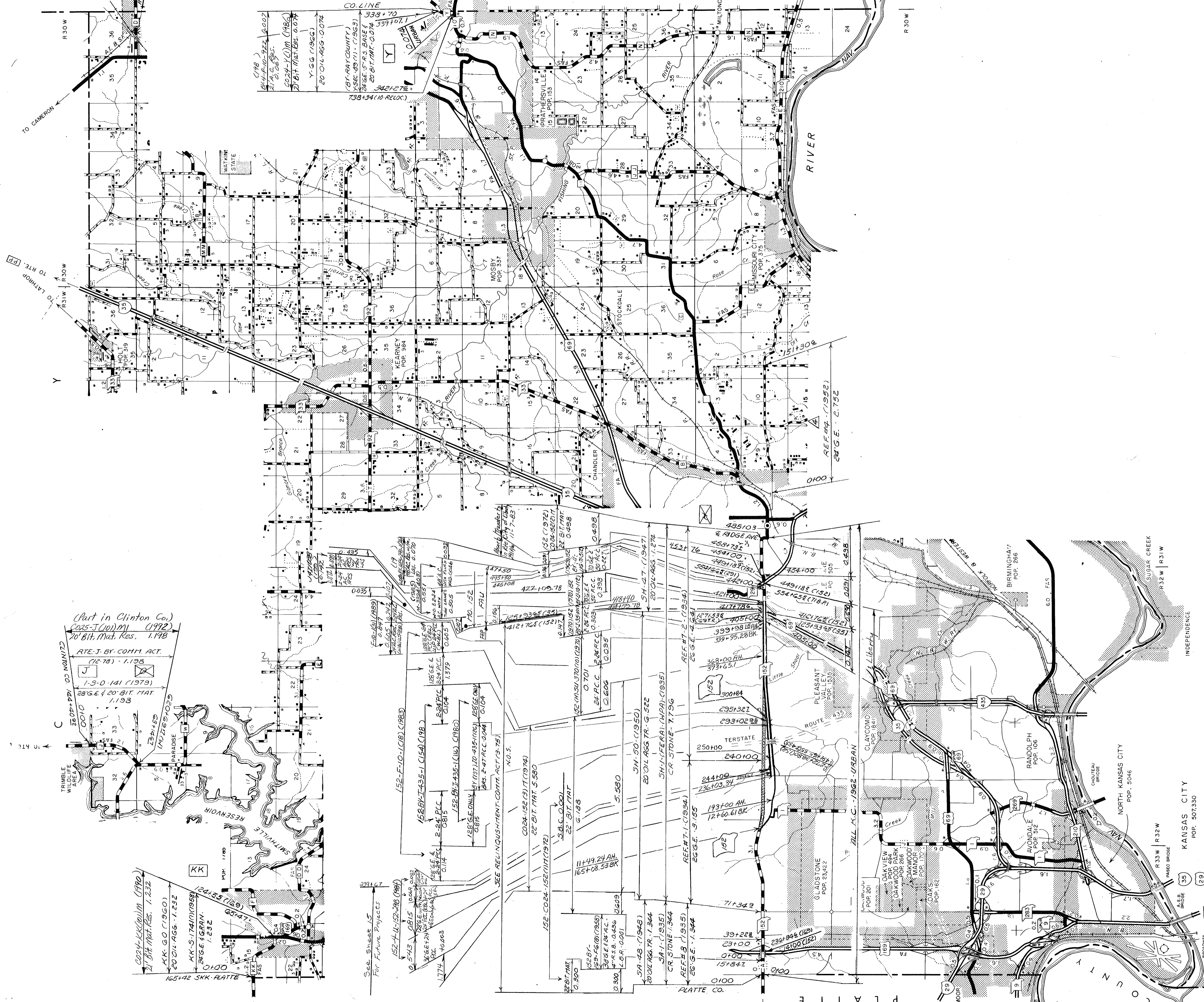
POP. IN PLATTE 10,431

POP. IN JACKSON 440,351

ROUTES:  
92 (EV)  
210 (E)

④ 024  
CLAY  
SHEET 8 OF 15

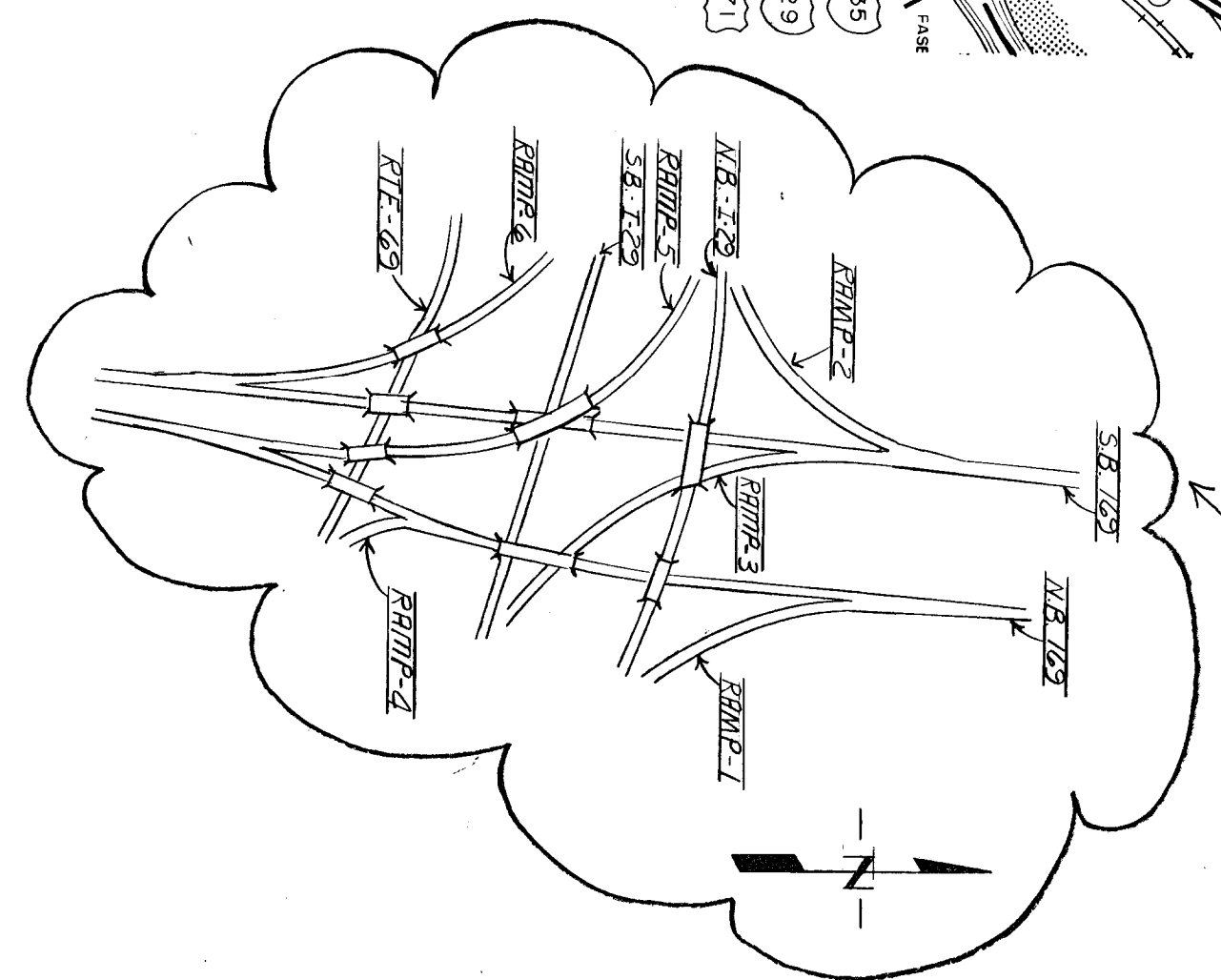
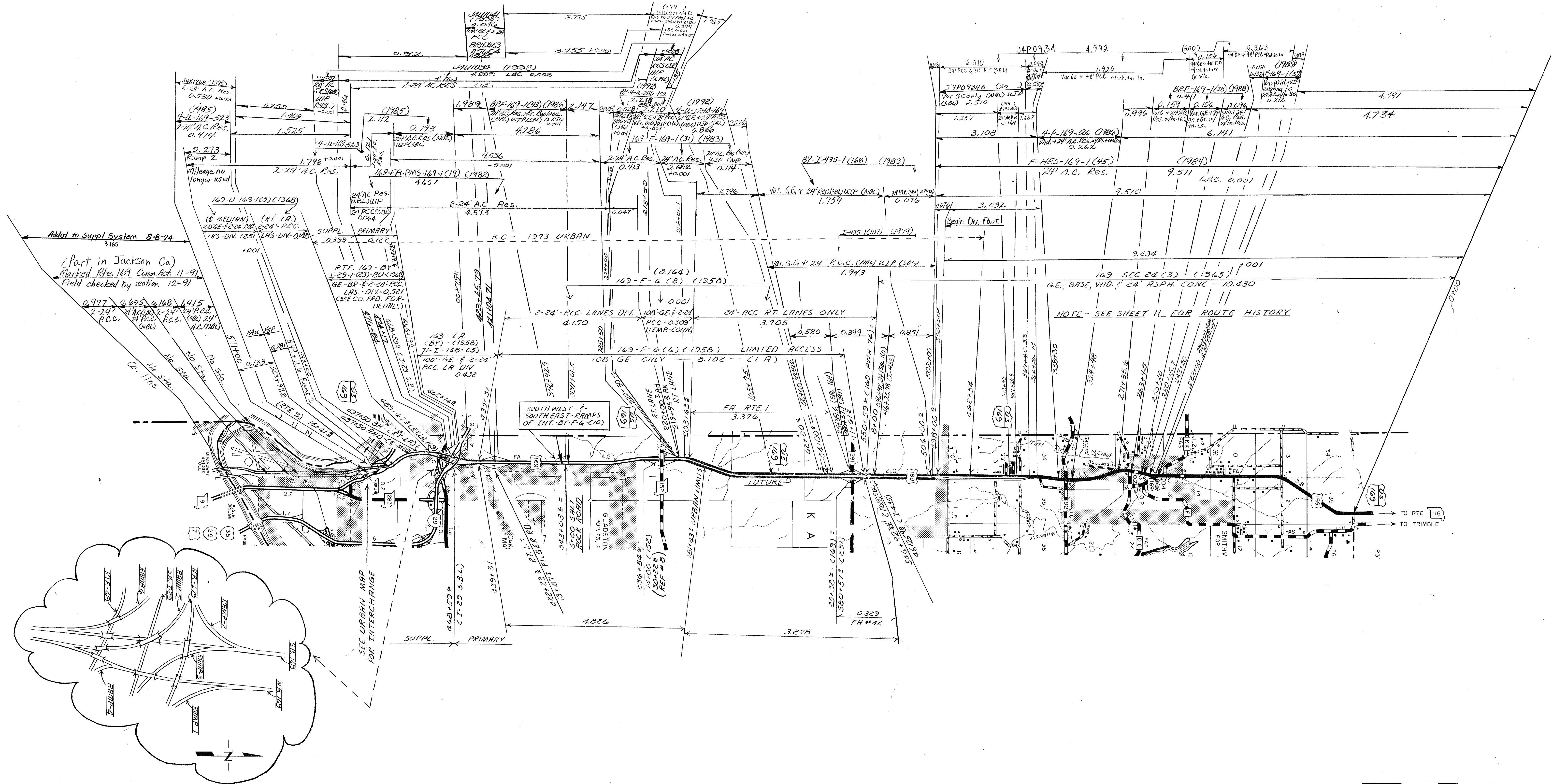




JACKSON

ROUTES  
152, Part  
J  
Y  
KK  
REF-4

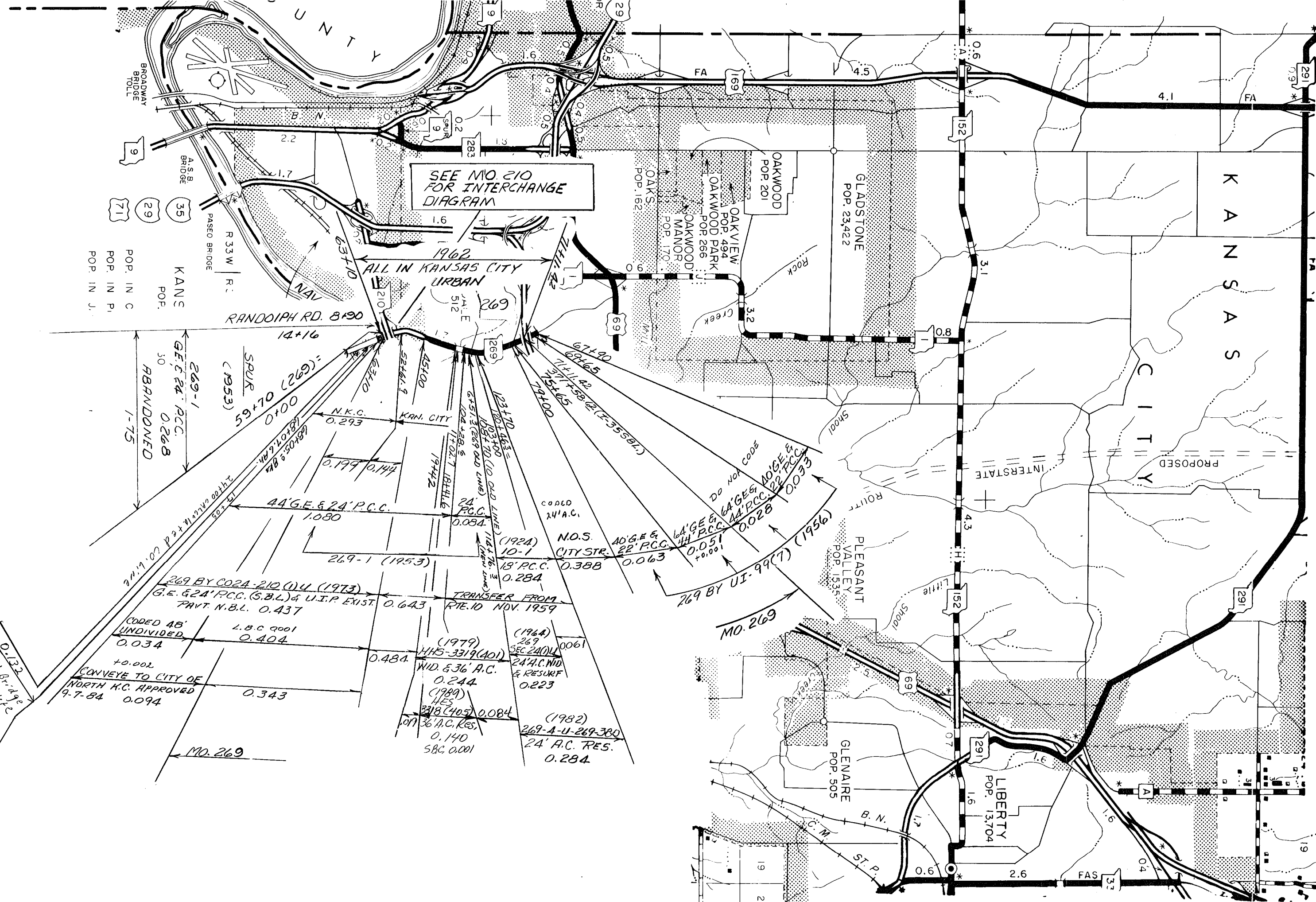
④ O24 Sheet 9 of 15  
CLAY



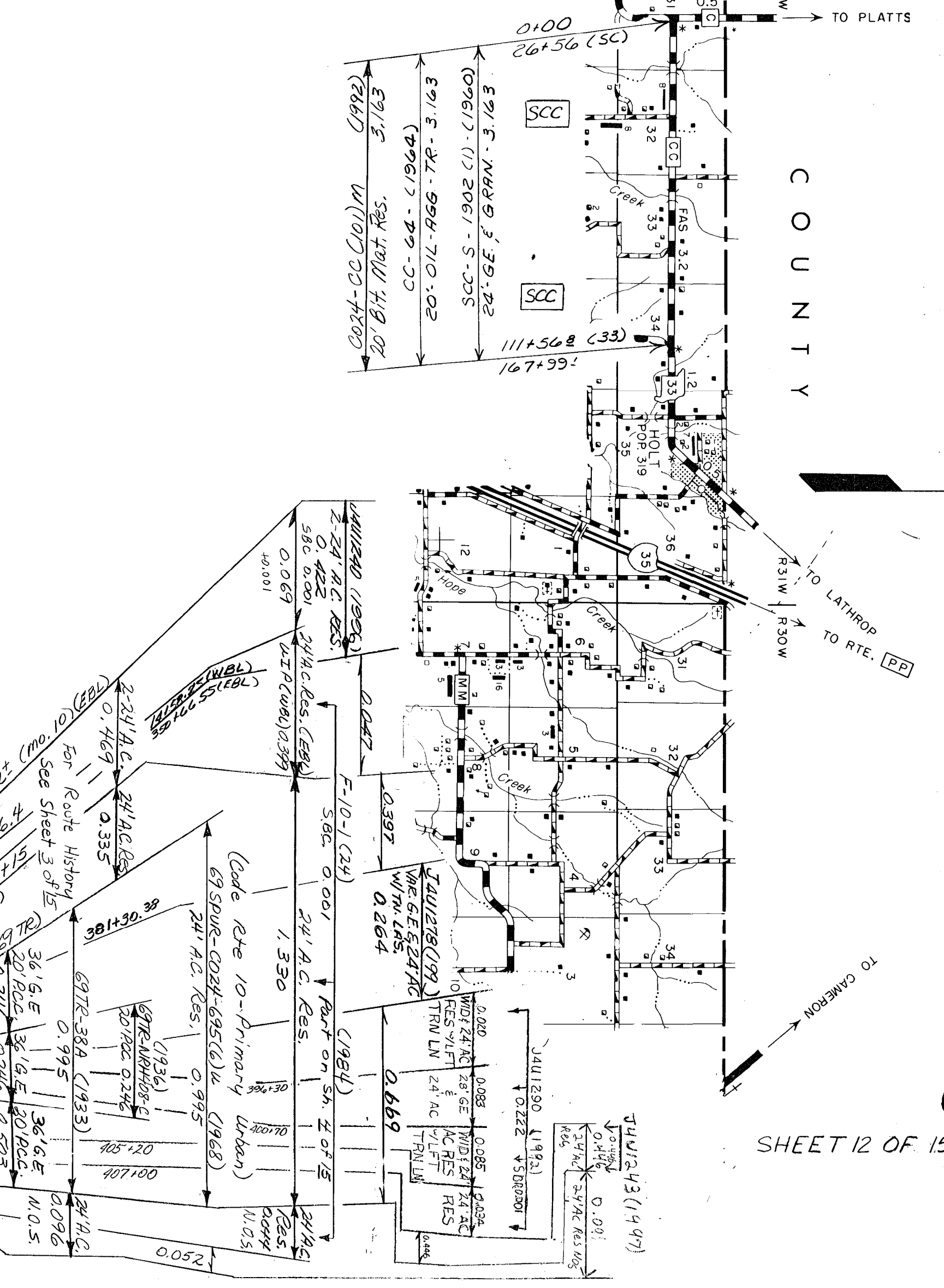
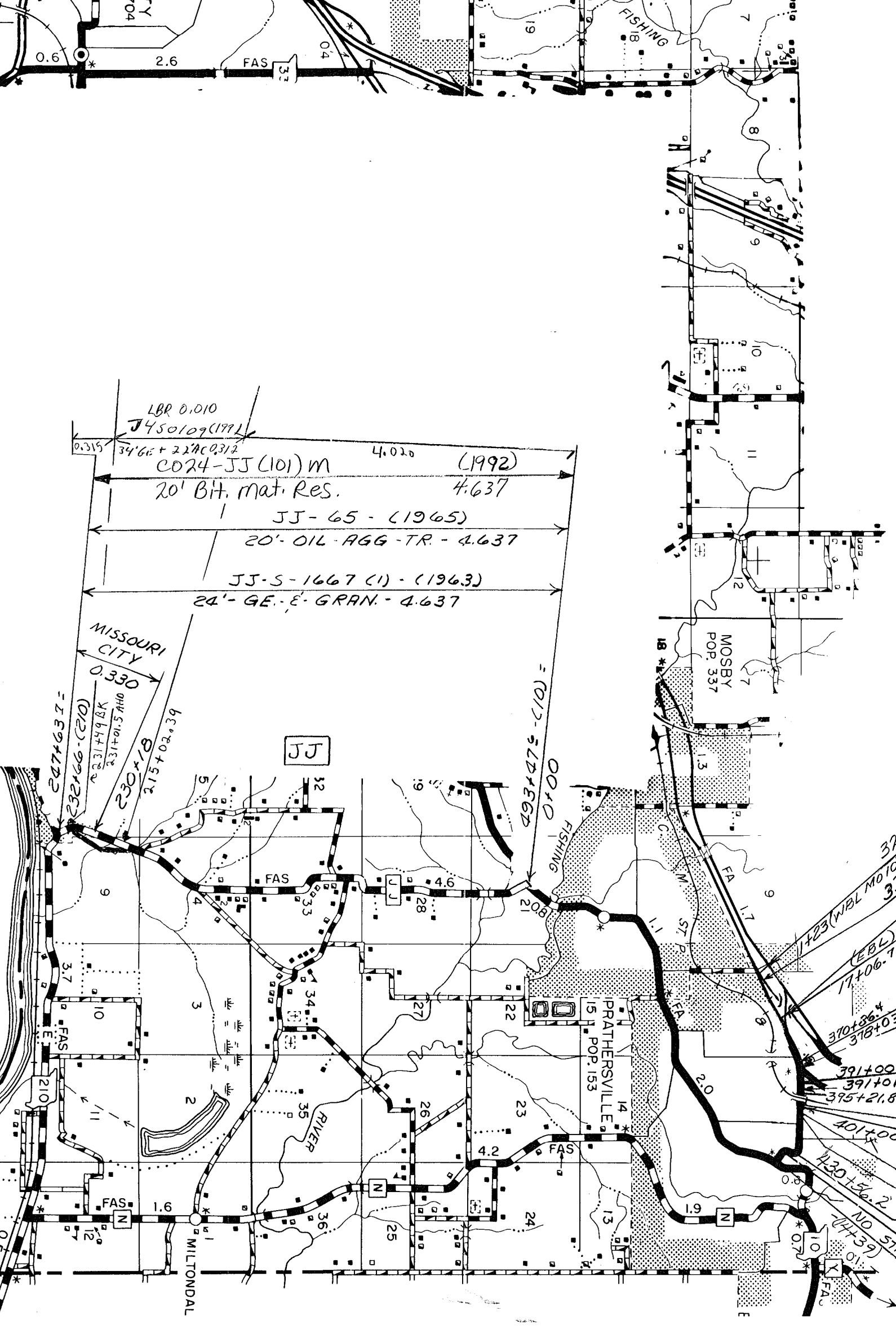
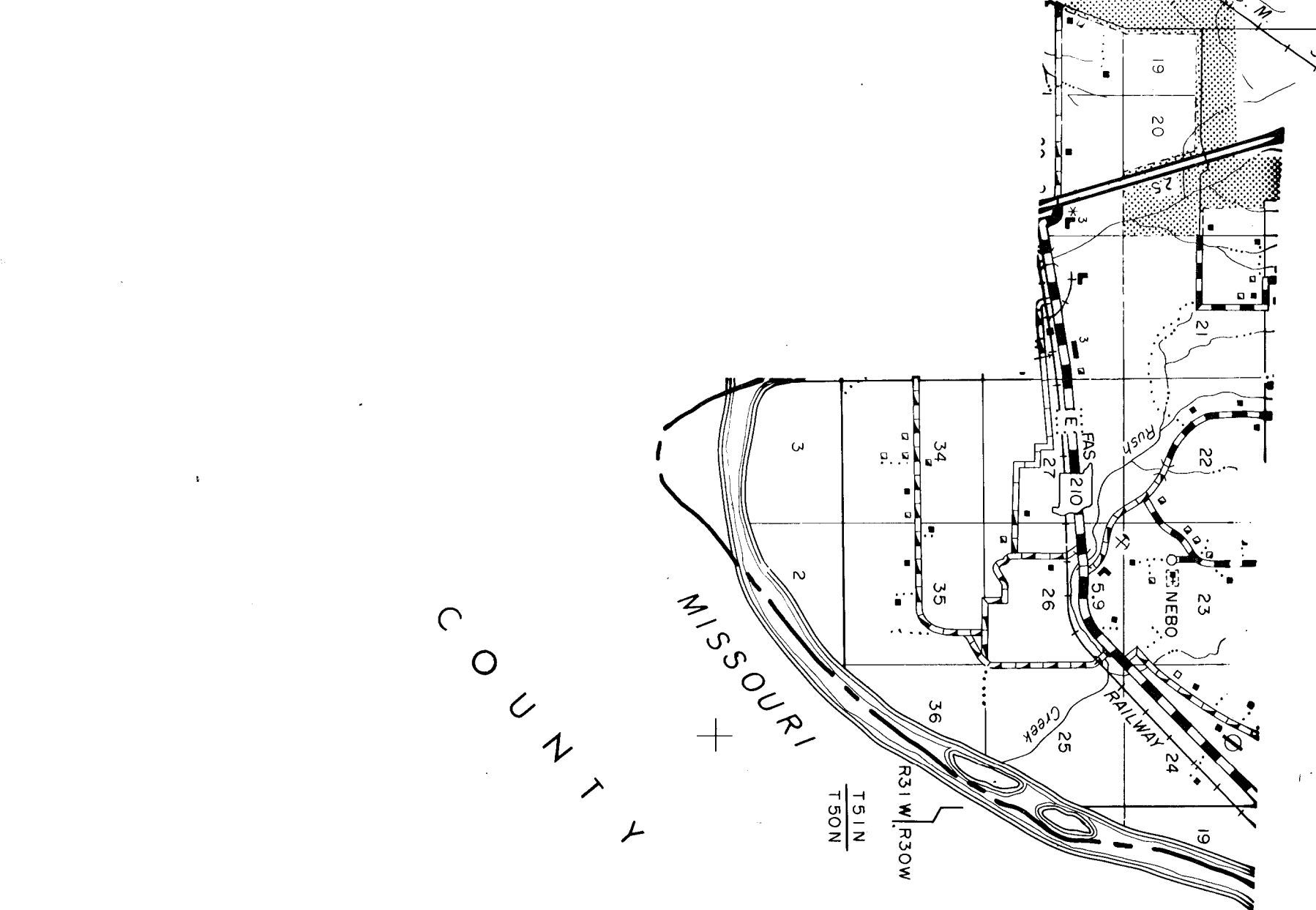
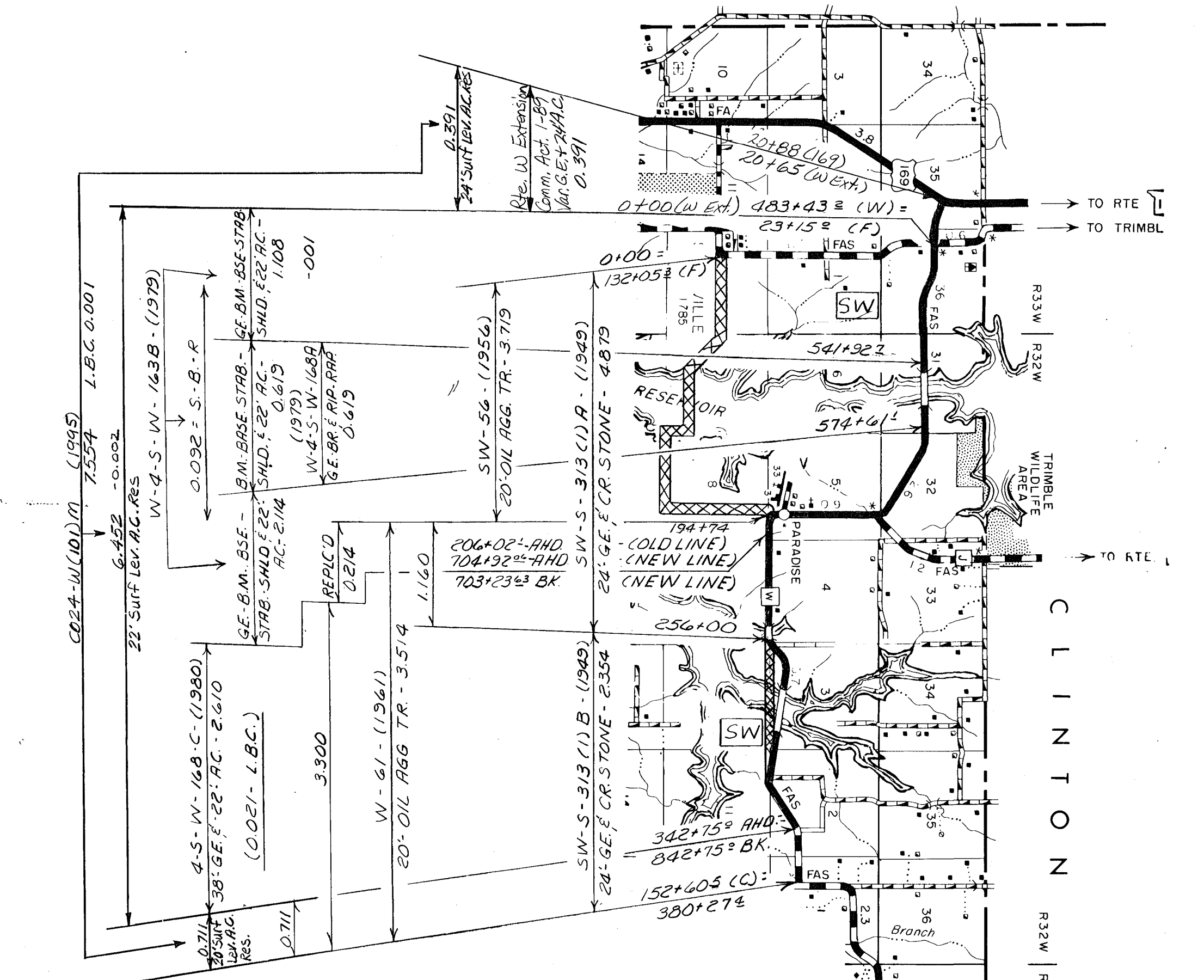
ROUTE:  
169

024  
CLAY



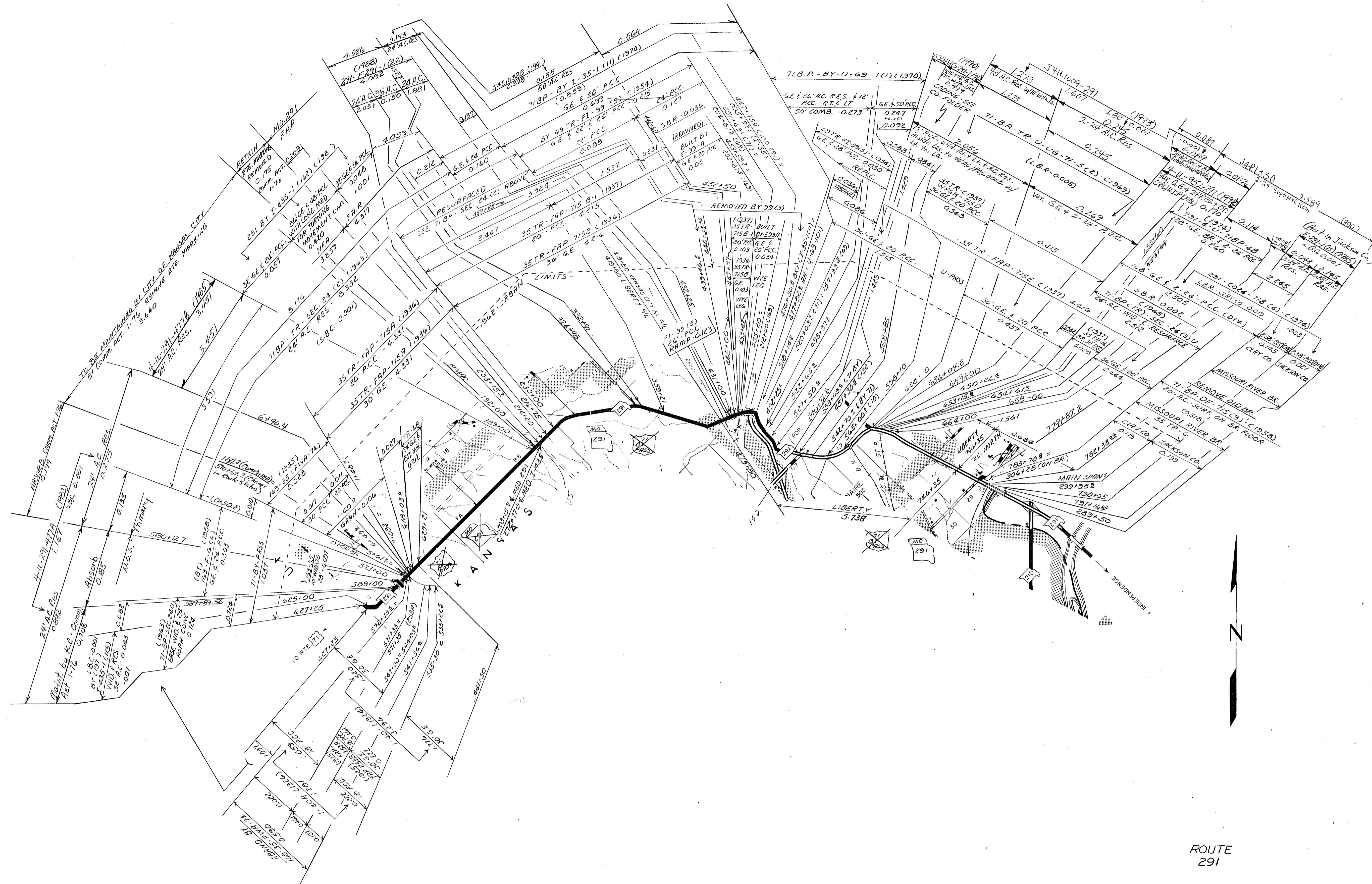


CHALLENGED (30)  
 (Part of Jackson Co.)  
 (Part of Not Code)



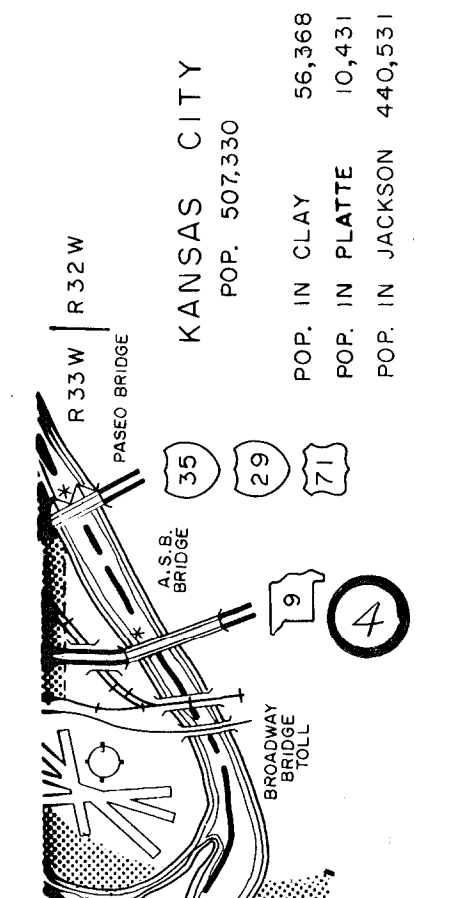
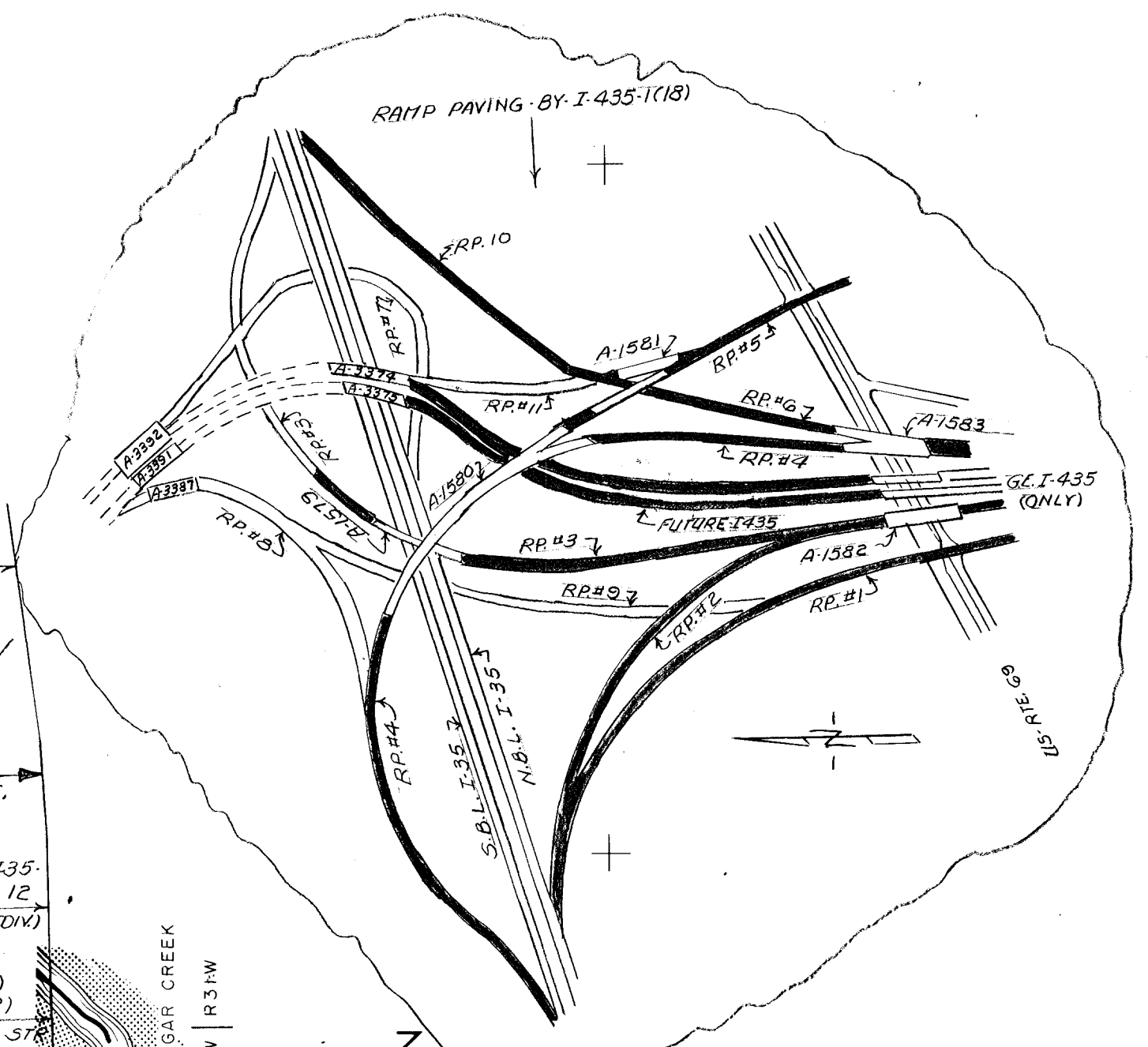
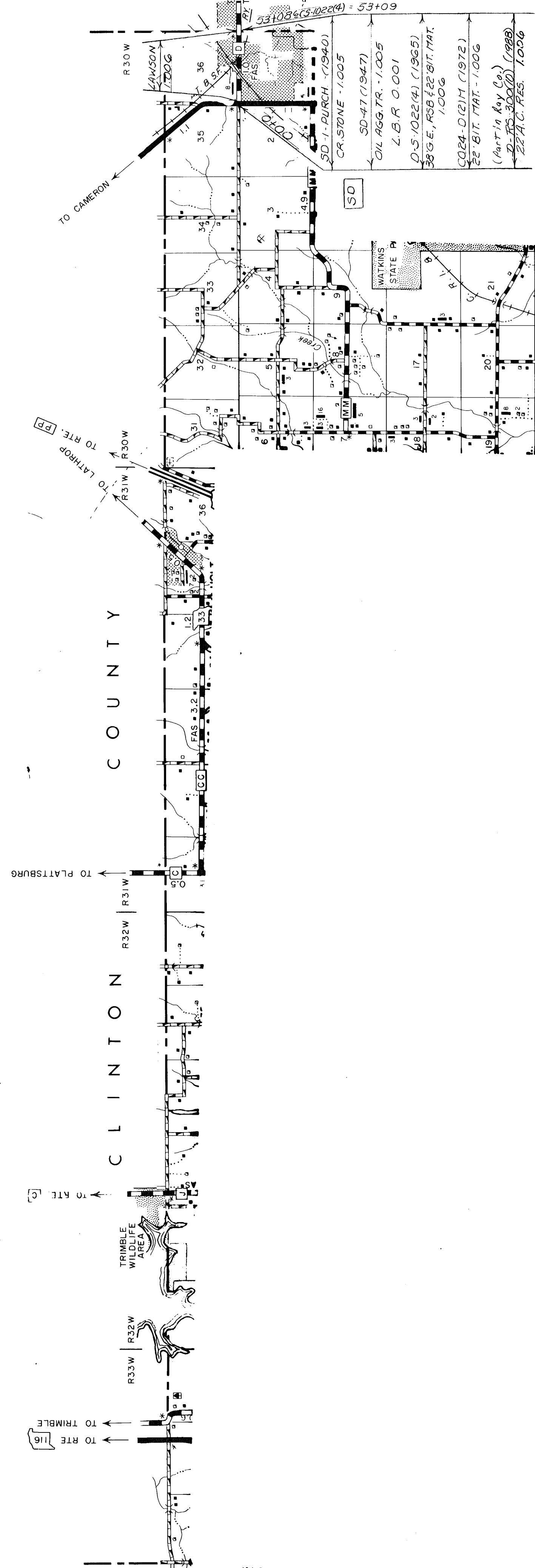
ROUTES  
 269  
 W  
 CC  
 JJ  
 10 (Part)

024  
 CLAY



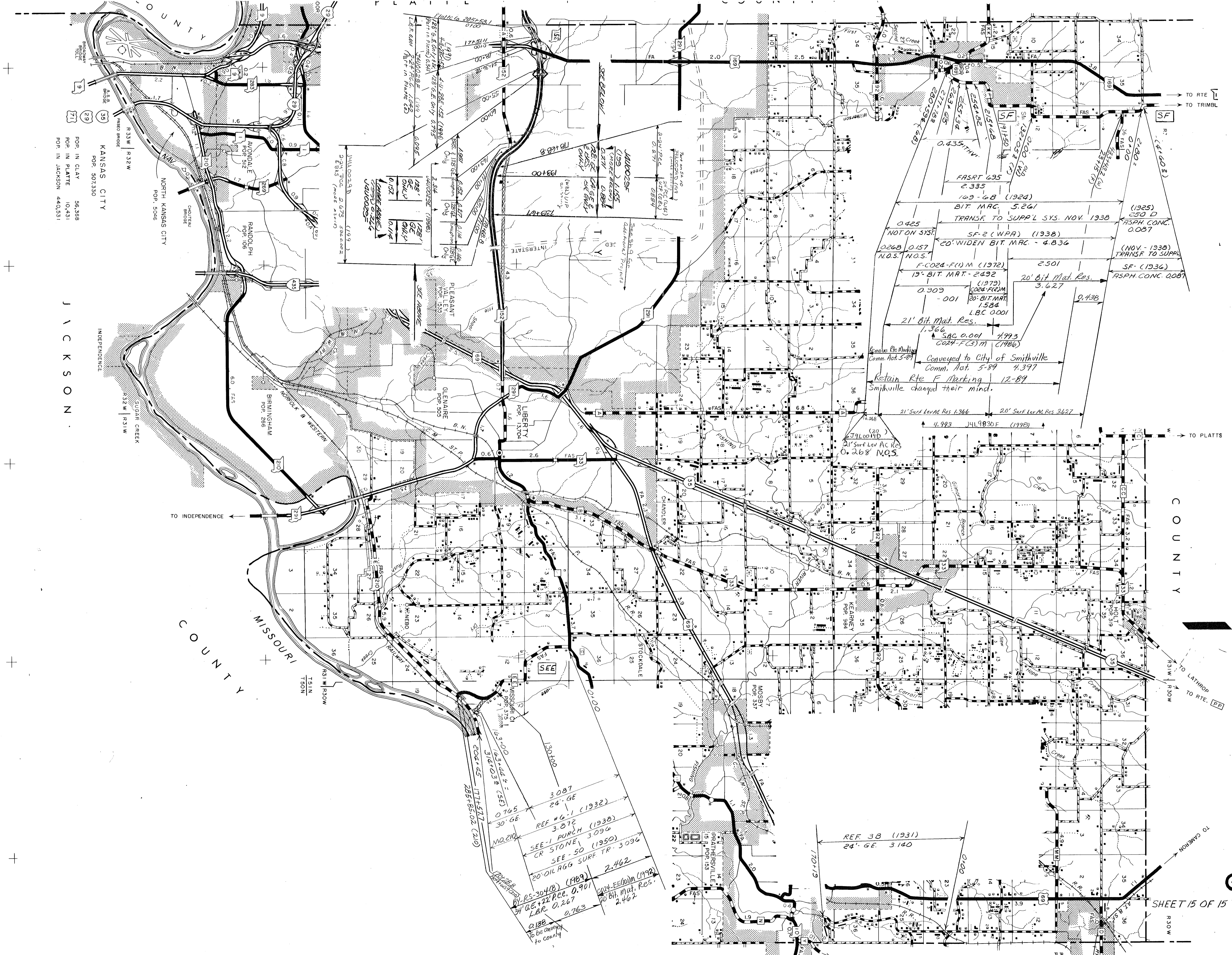
ROUTE  
291

Ⓞ 024  
CLAY



024 SHEET 14 OF 15  
CLAY

ROUTES:  
I-435  
D



KANSAS CITY  
 POP. 507,330  
 POP. IN CLAY 56,388  
 POP. IN PLATTE 10,431  
 POP. IN JACKSON 440,531

NORTH KANSAS CITY  
 POP. 5046

BIRMINGHAM  
 POP. 286

SMITHVILLE  
 POP. 984

REF 3B (1931)  
 24' GE. 3140

REF #6-1 (1932)  
 24' GE. 3087  
 REF #6-1 (1932)  
 24' GE. 3087  
 REF #6-1 (1932)  
 24' GE. 3087

REF #6-1 (1932)  
 24' GE. 3087  
 REF #6-1 (1932)  
 24' GE. 3087

REF #6-1 (1932)  
 24' GE. 3087  
 REF #6-1 (1932)  
 24' GE. 3087

REF #6-1 (1932)  
 24' GE. 3087  
 REF #6-1 (1932)  
 24' GE. 3087

REF #6-1 (1932)  
 24' GE. 3087  
 REF #6-1 (1932)  
 24' GE. 3087

REF #6-1 (1932)  
 24' GE. 3087  
 REF #6-1 (1932)  
 24' GE. 3087

REF #6-1 (1932)  
 24' GE. 3087  
 REF #6-1 (1932)  
 24' GE. 3087

REF #6-1 (1932)  
 24' GE. 3087  
 REF #6-1 (1932)  
 24' GE. 3087

ROUTES:  
 F  
 EE  
 REF-3B  
 152 Part

024  
 CLAY

SHEET 15 OF 15