

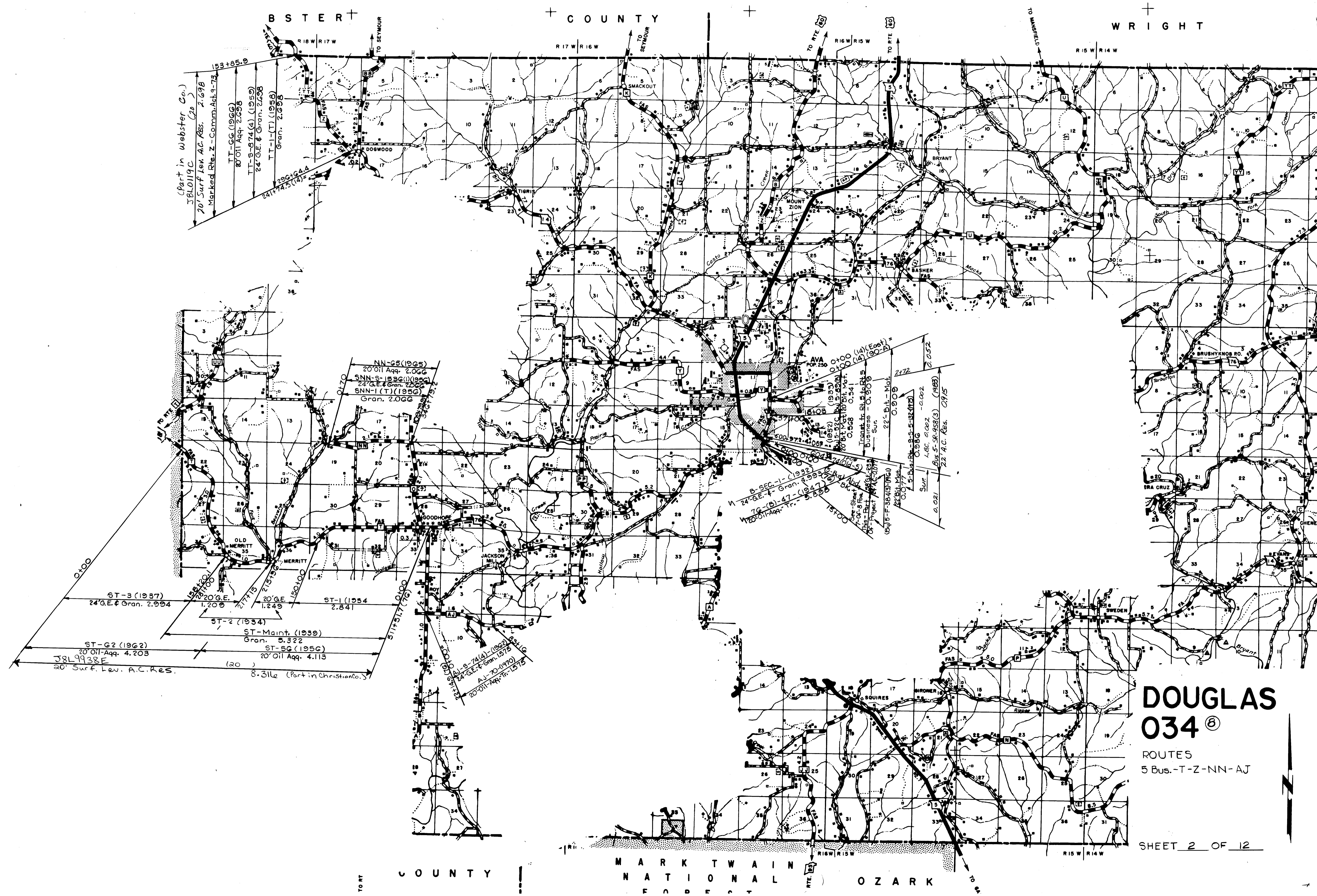
DOUGLAS
034 ③

ROUTES
5-AB

Wright Co. = 190740
 5-88 A (1929) Gravel 4.640
 5-88 B (1927) 30' G.E. 4.640
 5-89 A (1926) Gravel 4.585
 5-89 B (1927) 30' G.E. 4.583
 5-90 A (1925) Gravel 4.585
 5-90 B (1924) 30' G.E. 4.583
 5-90 C (1924) 30' G.E. 4.583
 5-90 D (1924) 30' G.E. 4.583
 5-90 E (1924) 30' G.E. 4.583
 5-90 F (1924) 30' G.E. 4.583
 5-90 G (1924) 30' G.E. 4.583
 5-90 H (1924) 30' G.E. 4.583
 5-90 I (1924) 30' G.E. 4.583
 5-90 J (1924) 30' G.E. 4.583
 5-90 K (1924) 30' G.E. 4.583
 5-90 L (1924) 30' G.E. 4.583
 5-90 M (1924) 30' G.E. 4.583
 5-90 N (1924) 30' G.E. 4.583
 5-90 O (1924) 30' G.E. 4.583
 5-90 P (1924) 30' G.E. 4.583
 5-90 Q (1924) 30' G.E. 4.583
 5-90 R (1924) 30' G.E. 4.583
 5-90 S (1924) 30' G.E. 4.583
 5-90 T (1924) 30' G.E. 4.583
 5-90 U (1924) 30' G.E. 4.583
 5-90 V (1924) 30' G.E. 4.583
 5-90 W (1924) 30' G.E. 4.583
 5-90 X (1924) 30' G.E. 4.583
 5-90 Y (1924) 30' G.E. 4.583
 5-90 Z (1924) 30' G.E. 4.583

144.0001
 5-FR-5-1(9) (1983)
 24' A.C. Res. 5.274
 50' 0.001
 5-F-384(3) (1961)
 38' G.E. 3.843
 5-91 B (1941) 1.534
 5-91 C (1941) 1.534
 5-91 D (1941) 1.534
 5-91 E (1941) 1.534
 5-91 F (1941) 1.534
 5-91 G (1941) 1.534
 5-91 H (1941) 1.534
 5-91 I (1941) 1.534
 5-91 J (1941) 1.534
 5-91 K (1941) 1.534
 5-91 L (1941) 1.534
 5-91 M (1941) 1.534
 5-91 N (1941) 1.534
 5-91 O (1941) 1.534
 5-91 P (1941) 1.534
 5-91 Q (1941) 1.534
 5-91 R (1941) 1.534
 5-91 S (1941) 1.534
 5-91 T (1941) 1.534
 5-91 U (1941) 1.534
 5-91 V (1941) 1.534
 5-91 W (1941) 1.534
 5-91 X (1941) 1.534
 5-91 Y (1941) 1.534
 5-91 Z (1941) 1.534

145+00
 146+00
 147+00
 148+00
 149+00
 150+00
 151+00
 152+00
 153+00
 154+00
 155+00
 156+00
 157+00
 158+00
 159+00
 160+00
 161+00
 162+00
 163+00
 164+00
 165+00
 166+00
 167+00
 168+00
 169+00
 170+00
 171+00
 172+00
 173+00
 174+00
 175+00
 176+00
 177+00
 178+00
 179+00
 180+00
 181+00
 182+00
 183+00
 184+00
 185+00
 186+00
 187+00
 188+00
 189+00
 190+00
 191+00
 192+00
 193+00
 194+00
 195+00
 196+00
 197+00
 198+00
 199+00
 200+00



(part in Webster Co.)
 J8L0119C
 20' Surf. Lev. A.C. Res. 2.698
 Marked Rte. Z - Comm. Act. 9-73
 TT-GC (1966)
 20' Oil Aq. 2.698
 TT-S-874(4) (1959)
 24' G.E. & Gran. 2.698
 TT-I(T) (1958)
 Gran. 2.698

NN-65 (1965)
 20' Oil Aq. 2.066
 SNN-S-133G(1) (1950)
 24' G.E. & Gran. 2.066
 SNN-I(T) (1950)
 Gran. 2.066

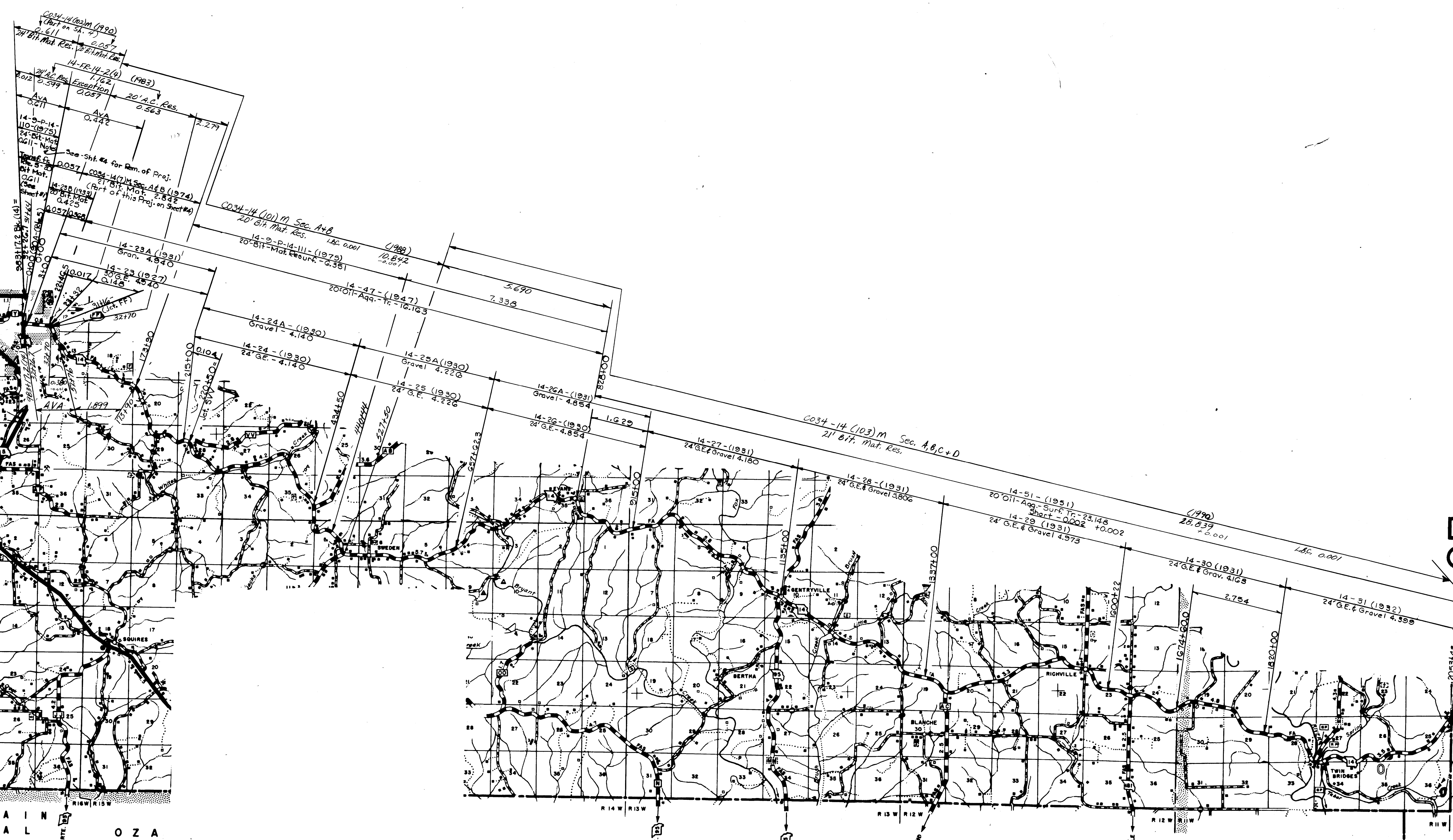
B-SEC-1-C (1932)
 24' G.E. & Gran. 4.997
 76-(B)-47-(1947)
 20' Oil Aq. Tr. 9.898
 (S45-F-36.4(3) (1941)
 142' Oil Tr.
 CO. 15' Bus. - 9-3-5-132(172)
 Sur. 1.486
 22'-E.H. - Mol. 0.909
 22'-E.H. - Mol. 2.772
 22'-E.H. - Mol. 2.052
 Sur. 1.486
 22'-E.H. - Mol. 0.909
 22'-E.H. - Mol. 2.772
 22'-E.H. - Mol. 2.052

ST-3 (1937)
 24' G.E. & Gran. 2.994
 ST-2 (1934)
 20' G.E. 1.249
 ST-1 (1934)
 20' G.E. 1.249
 ST-Maint. (1939)
 Gran. 5.322
 ST-5G (1950)
 20' Oil Aq. 4.113
 ST-G2 (1962)
 20' Oil Aq. 4.203
 J8L9938E
 20' Surf. Lev. A.C. Res.
 8-311e (Part in Christian Co.)

91A-S-74(4) (1962)
 24' G.E. & Gran. 1.575
 A-J-70 (1970)
 20' Oil Aq. Tr. 1.575

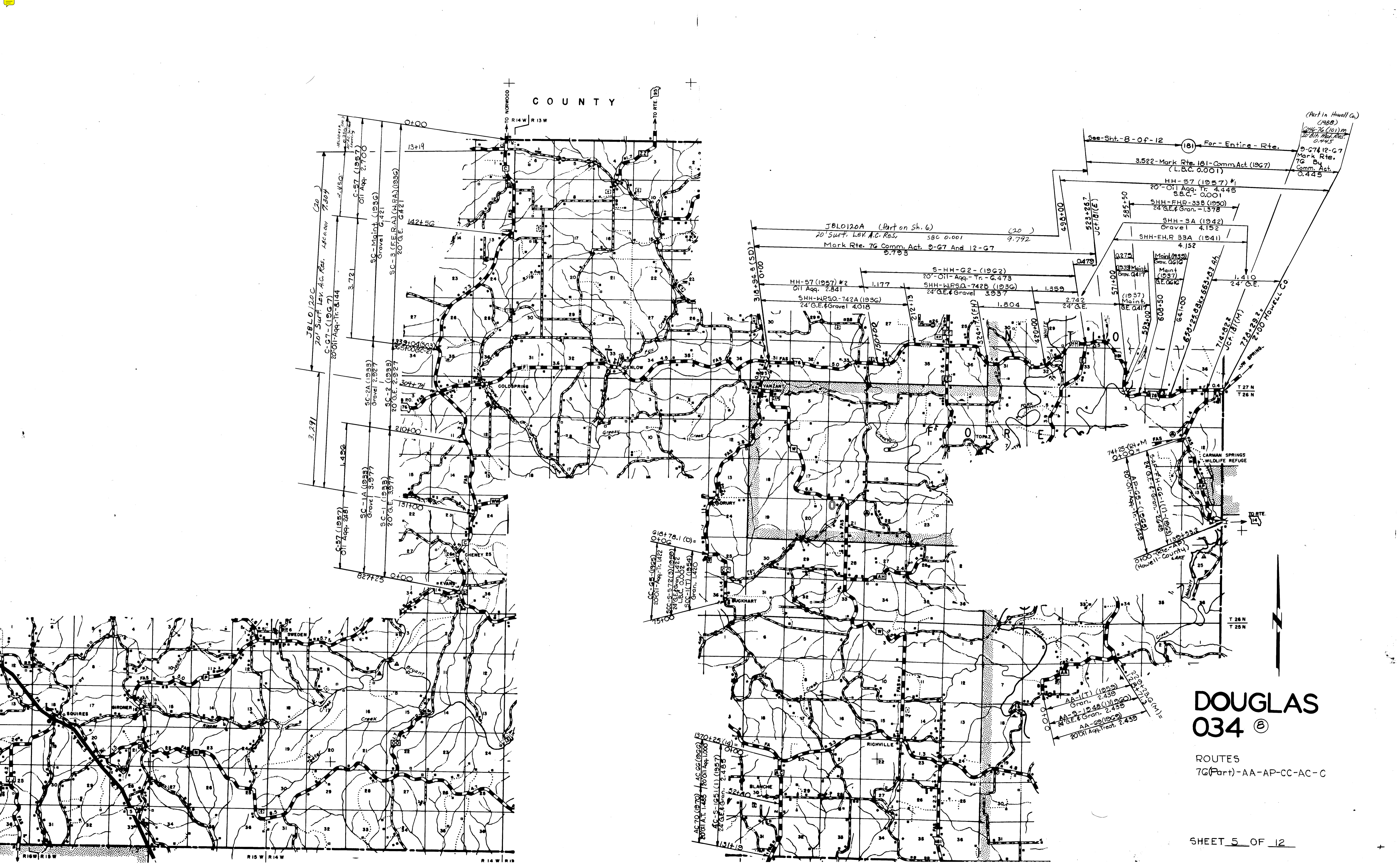
DOUGLAS 034

ROUTES
 5 Bus. - T-Z-NN-AJ



**DOUGLAS
O34** ©

ROUTES
14 (Part)



COUNTY

**DOUGLAS
034** ©

ROUTES
7G(Part)-AA-AP-CC-AC-C

(Part in Howell Co.)
(1988)
046-76 (10) M
20' 0" Lev. Res.
0.445

See Sht. 8-Of-12 (181) For Entire Rte.
3.522-Mark Rte. 181-Comm. Act. (1967)
(L.B.C. 0.001)

HH-57 (1957) #1
20'-0" Oil Agg. Tr. 4.446
S.B.C. - 0.001

SHH-FHP-33B (1930)
24' G.E. & Gravel - 1.378

SHH-3A (1942)
Gravel 4.152

SHH-F.H.P. 33A (1941)
4.152

S-HH-G2-(1962)
20'-0" Oil Agg. Tr. - 6.473

SHH-WP50-742B (1936)
24' G.E. & Gravel 3.557

SHH-WP50-742A (1936)
24' G.E. & Gravel 4.018

HH-57 (1957) #2
Oil Agg. 2.841

74+25 (21+M)
0+00=

74+25 (21+M)
0+00=

74+25 (21+M)
0+00=

74+25 (21+M)
0+00=

74+25 (21+M)
0+00=

74+25 (21+M)
0+00=

74+25 (21+M)
0+00=

74+25 (21+M)
0+00=

74+25 (21+M)
0+00=

74+25 (21+M)
0+00=

74+25 (21+M)
0+00=

74+25 (21+M)
0+00=

74+25 (21+M)
0+00=

74+25 (21+M)
0+00=

74+25 (21+M)
0+00=

74+25 (21+M)
0+00=

74+25 (21+M)
0+00=

74+25 (21+M)
0+00=

74+25 (21+M)
0+00=

74+25 (21+M)
0+00=

74+25 (21+M)
0+00=

74+25 (21+M)
0+00=

74+25 (21+M)
0+00=

74+25 (21+M)
0+00=

AC-69 (1969)
20' 0" Oil Agg. Tr. 2.439

AA-1(T) (1955)
Gravel 2.439

AA-3-(1945)(1960)
24' G.E. & Gravel 2.439

AA-69 (1969)
20' 0" Oil Agg. Tr. 2.439

AA-1(T) (1955)
Gravel 2.439

AA-3-(1945)(1960)
24' G.E. & Gravel 2.439

AA-69 (1969)
20' 0" Oil Agg. Tr. 2.439

AA-1(T) (1955)
Gravel 2.439

AA-3-(1945)(1960)
24' G.E. & Gravel 2.439

AA-69 (1969)
20' 0" Oil Agg. Tr. 2.439

AA-1(T) (1955)
Gravel 2.439

AA-3-(1945)(1960)
24' G.E. & Gravel 2.439

AA-69 (1969)
20' 0" Oil Agg. Tr. 2.439

AA-1(T) (1955)
Gravel 2.439

AA-3-(1945)(1960)
24' G.E. & Gravel 2.439

AA-69 (1969)
20' 0" Oil Agg. Tr. 2.439

AA-1(T) (1955)
Gravel 2.439

AA-3-(1945)(1960)
24' G.E. & Gravel 2.439

AA-69 (1969)
20' 0" Oil Agg. Tr. 2.439

AA-1(T) (1955)
Gravel 2.439

AA-3-(1945)(1960)
24' G.E. & Gravel 2.439

AA-69 (1969)
20' 0" Oil Agg. Tr. 2.439

AA-1(T) (1955)
Gravel 2.439

AA-3-(1945)(1960)
24' G.E. & Gravel 2.439

AA-69 (1969)
20' 0" Oil Agg. Tr. 2.439

AA-1(T) (1955)
Gravel 2.439

AA-3-(1945)(1960)
24' G.E. & Gravel 2.439

AA-69 (1969)
20' 0" Oil Agg. Tr. 2.439

AA-1(T) (1955)
Gravel 2.439

AA-3-(1945)(1960)
24' G.E. & Gravel 2.439

AA-69 (1969)
20' 0" Oil Agg. Tr. 2.439

AA-1(T) (1955)
Gravel 2.439

AA-3-(1945)(1960)
24' G.E. & Gravel 2.439

AA-69 (1969)
20' 0" Oil Agg. Tr. 2.439

AA-1(T) (1955)
Gravel 2.439

AA-3-(1945)(1960)
24' G.E. & Gravel 2.439

AA-69 (1969)
20' 0" Oil Agg. Tr. 2.439

AA-1(T) (1955)
Gravel 2.439

AA-3-(1945)(1960)
24' G.E. & Gravel 2.439

AA-69 (1969)
20' 0" Oil Agg. Tr. 2.439

AA-1(T) (1955)
Gravel 2.439

AA-3-(1945)(1960)
24' G.E. & Gravel 2.439

AA-69 (1969)
20' 0" Oil Agg. Tr. 2.439

JBL0120C
20' Surf. Lev. A.C. Res. 1460.000
7.304

C-57-(1957)
20' 0" Oil Agg. Tr. 2.700

SC-Maint. (1936)
Gravel 6.421

SC-3 (F.E.R.A.) (ALFA) (1936)
20' G.E. 6.421

SC-2A (1933)
Gravel 2.927

SC-2 (1933)
20' G.E. 2.927

SC-1A (1933)
Gravel 3.977

SC-1 (1933)
20' G.E. 3.977

SC-2A (1933)
Gravel 2.927

SC-2 (1933)
20' G.E. 2.927

SC-1A (1933)
Gravel 3.977

SC-1 (1933)
20' G.E. 3.977

SC-2A (1933)
Gravel 2.927

SC-2 (1933)
20' G.E. 2.927

SC-1A (1933)
Gravel 3.977

SC-1 (1933)
20' G.E. 3.977

SC-2A (1933)
Gravel 2.927

SC-2 (1933)
20' G.E. 2.927

SC-1A (1933)
Gravel 3.977

SC-1 (1933)
20' G.E. 3.977

SC-2A (1933)
Gravel 2.927

SC-2 (1933)
20' G.E. 2.927

SC-1A (1933)
Gravel 3.977

SC-1 (1933)
20' G.E. 3.977

SC-2A (1933)
Gravel 2.927

SC-2 (1933)
20' G.E. 2.927

SC-1A (1933)
Gravel 3.977

SC-1 (1933)
20' G.E. 3.977

SC-2A (1933)
Gravel 2.927

SC-2 (1933)
20' G.E. 2.927

SC-1A (1933)
Gravel 3.977

SC-1 (1933)
20' G.E. 3.977

SC-2A (1933)
Gravel 2.927

SC-2 (1933)
20' G.E. 2.927

SC-1A (1933)
Gravel 3.977

SC-1 (1933)
20' G.E. 3.977

SC-2A (1933)
Gravel 2.927

SC-2 (1933)
20' G.E. 2.927

SC-1A (1933)
Gravel 3.977

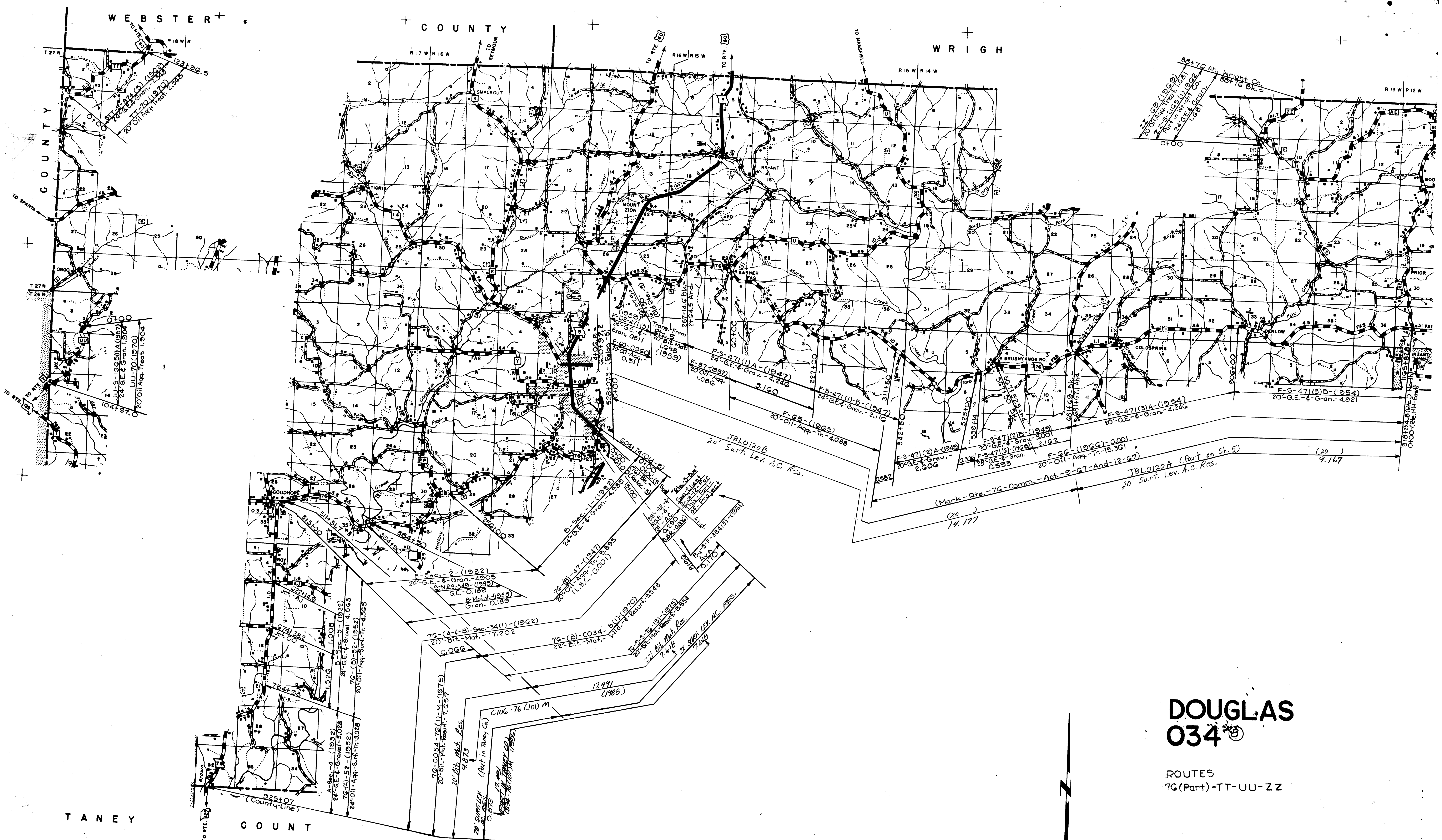
SC-1 (1933)
20' G.E. 3.977

SC-2A (1933)
Gravel 2.927

SC-2 (1933)
20' G.E. 2.927

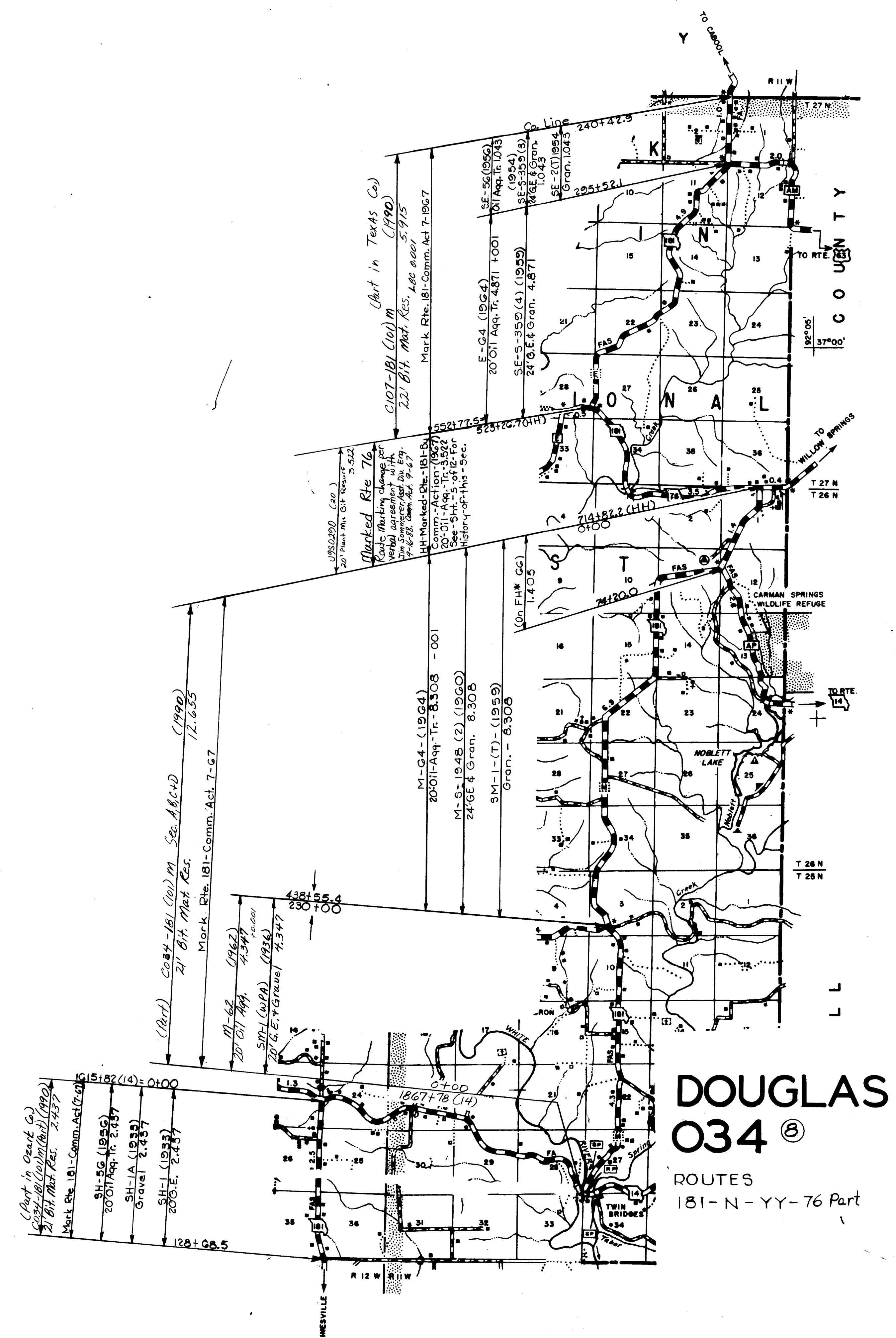
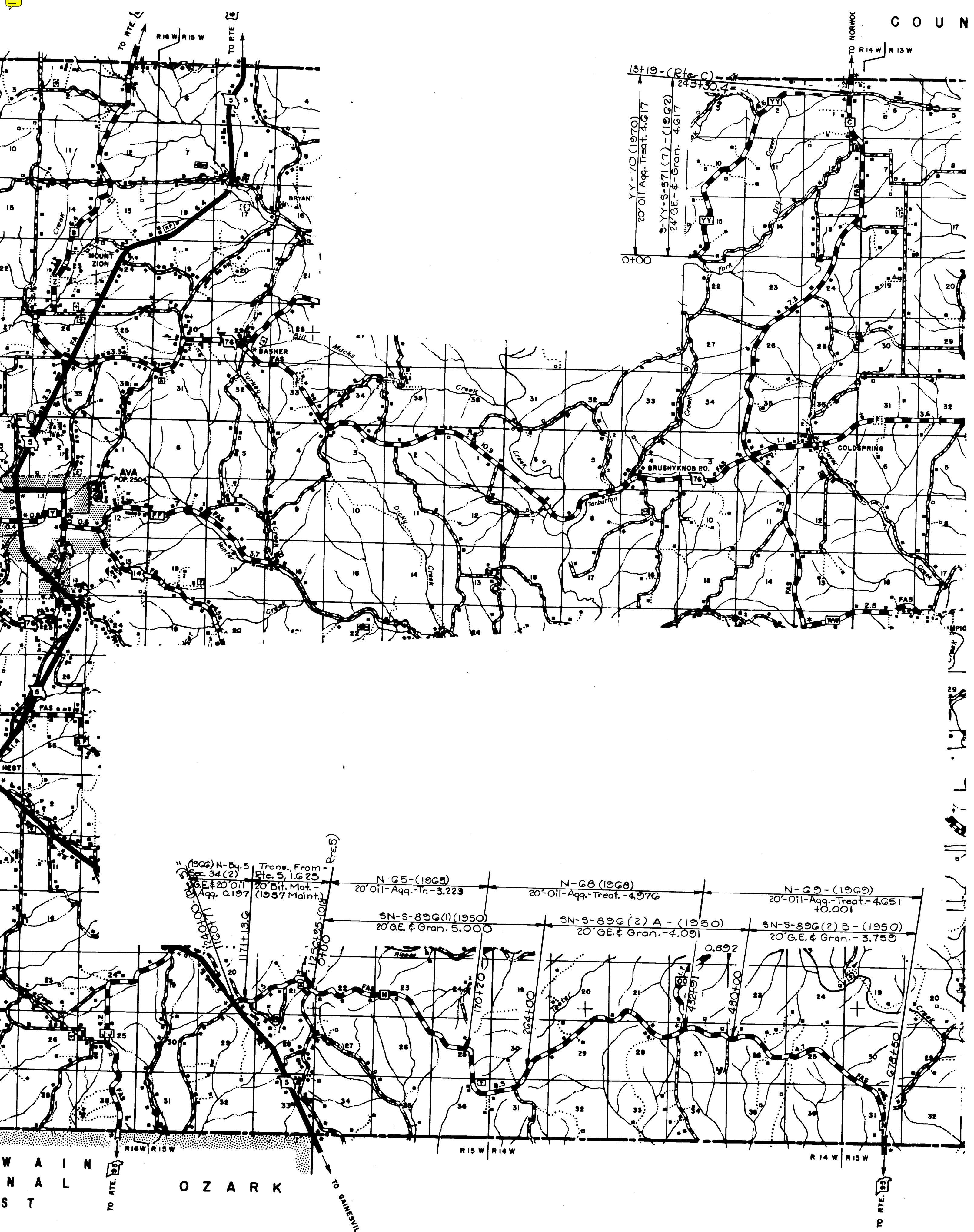
SC-1A (1933)
Gravel 3.977

SC-1 (1933)
20' G.E. 3.977



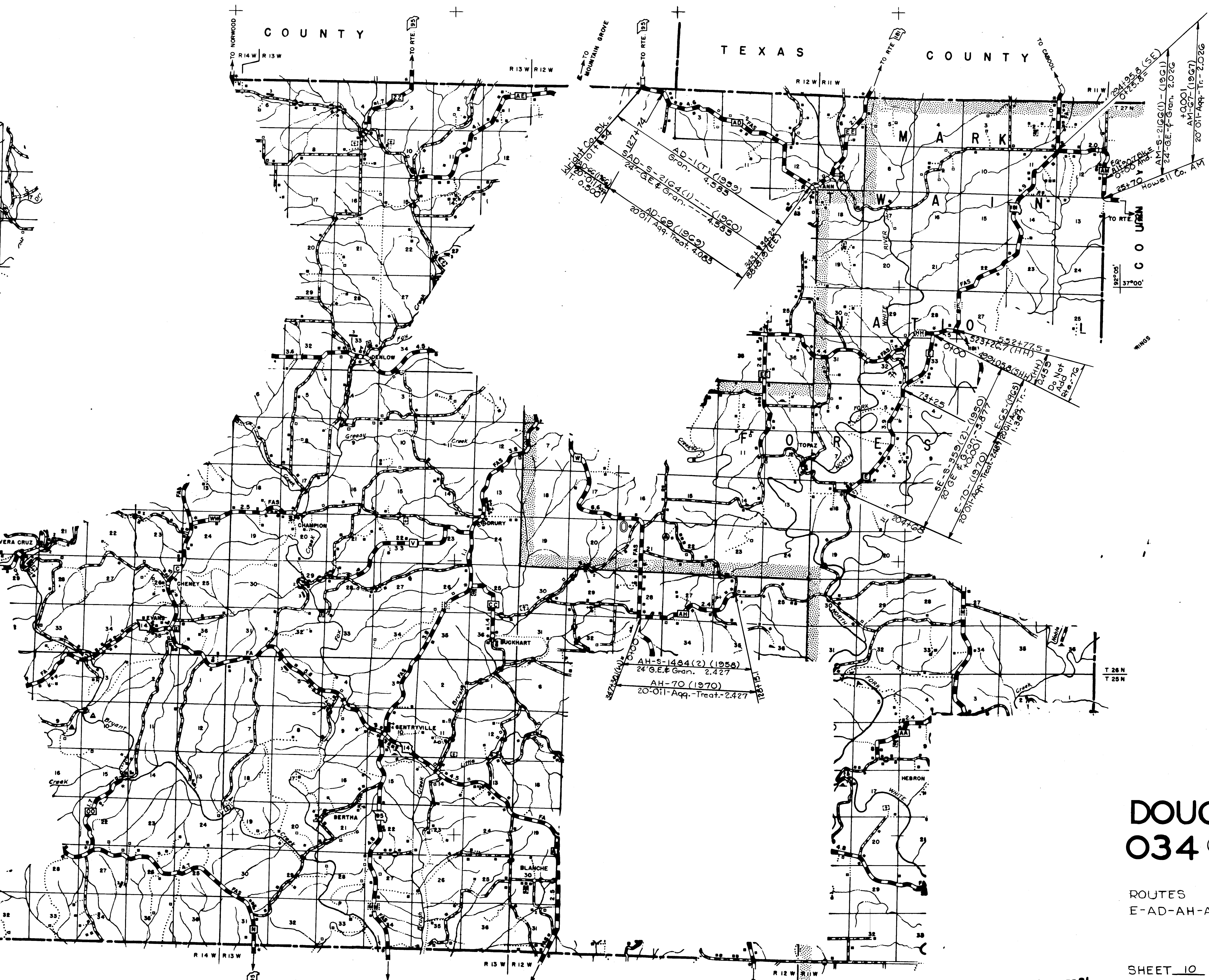
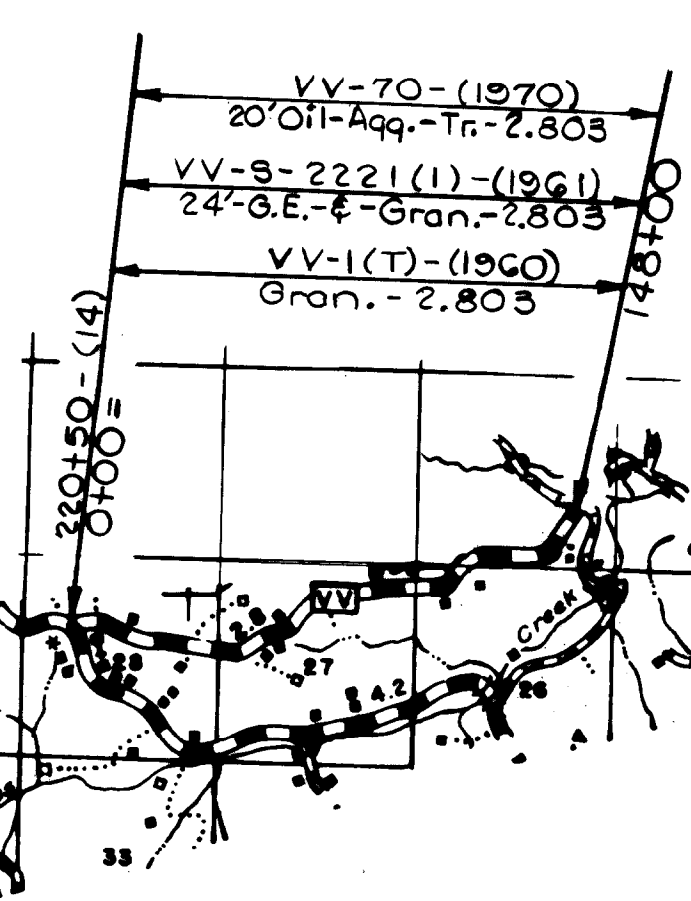
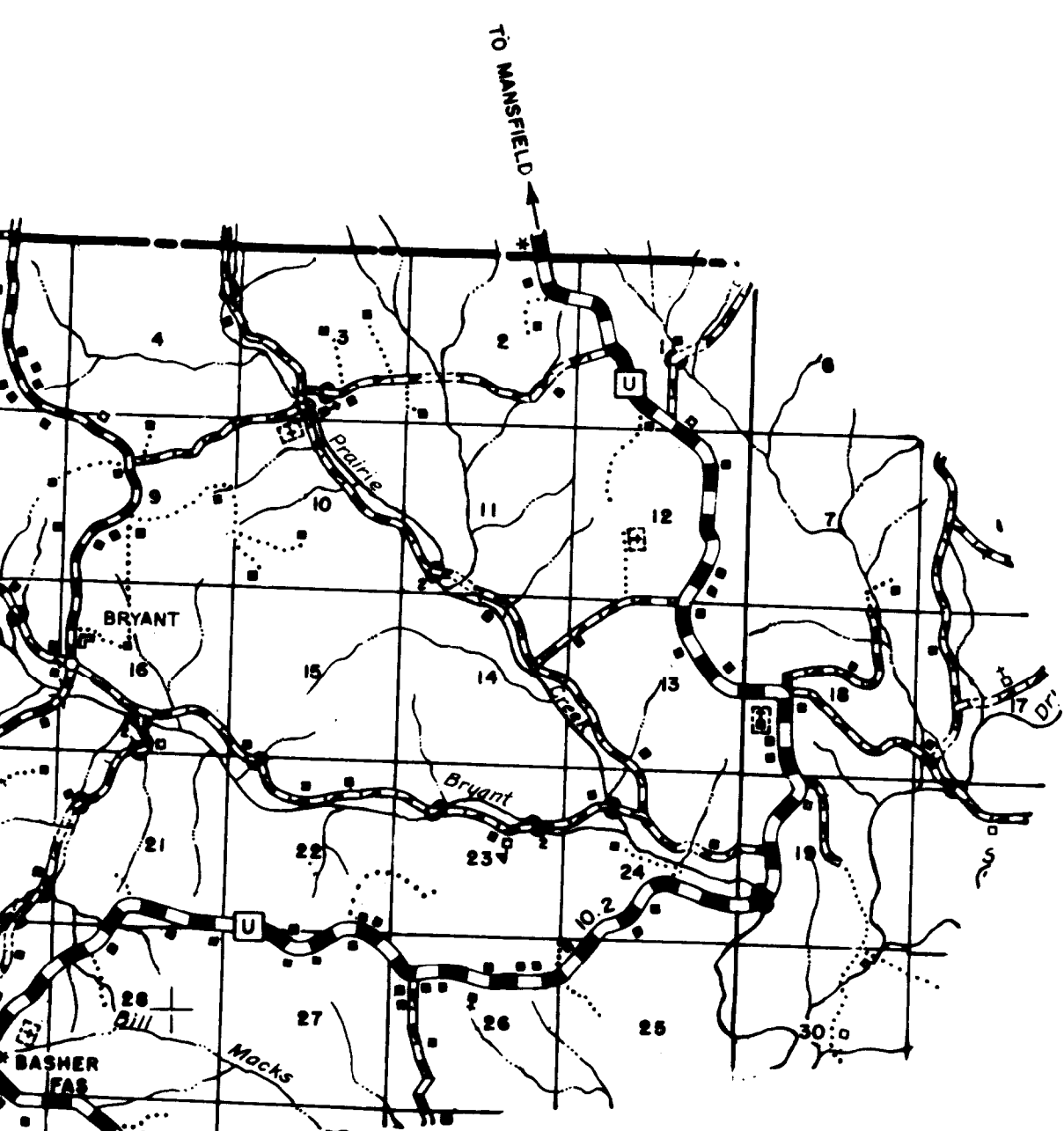
**DOUGLAS
034**

ROUTES
7G(Part)-TT-UU-ZZ



**DOUGLAS
034**

ROUTES
181-N-YY-76 Part

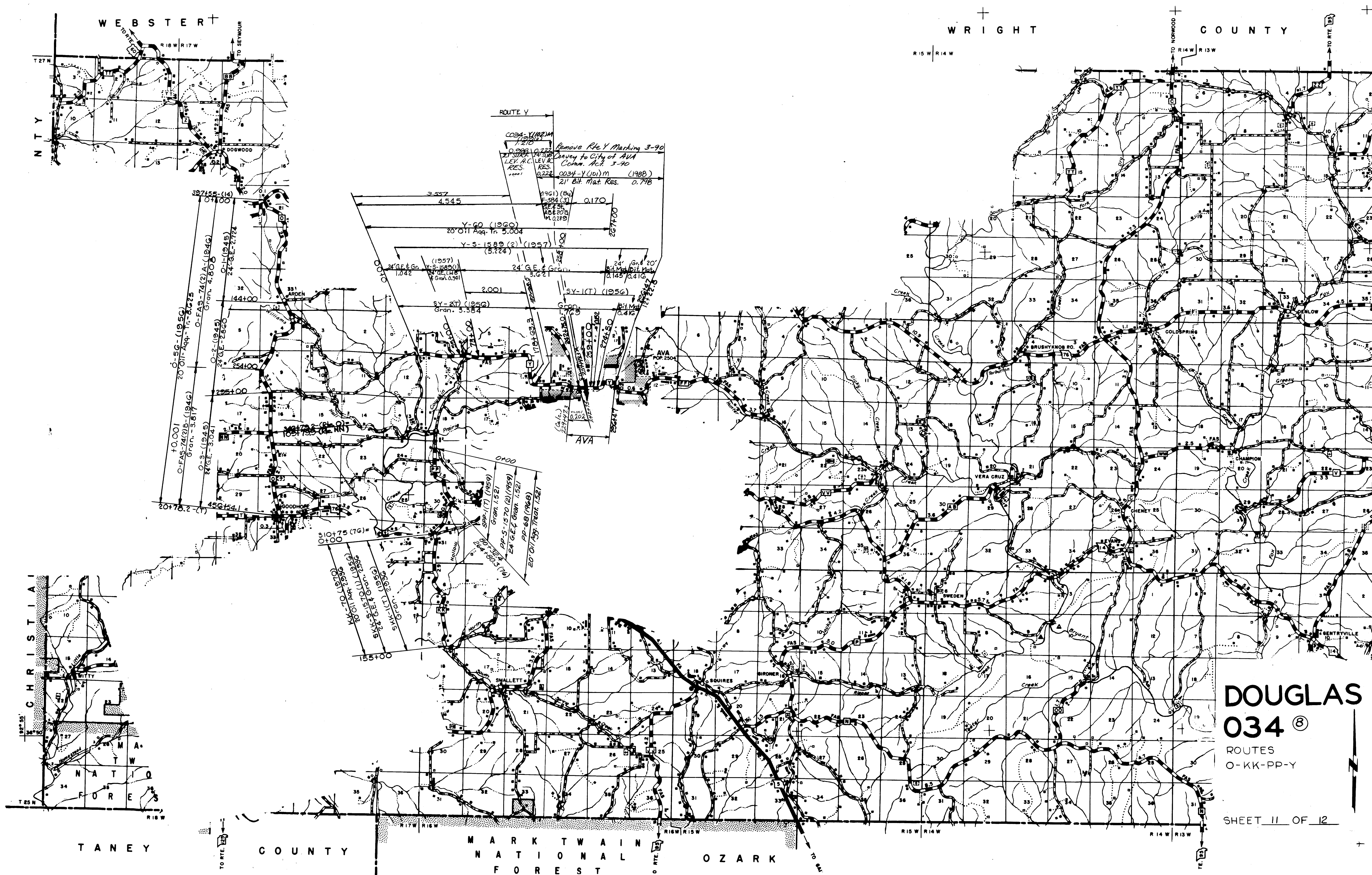


COUNTY TEXAS COUNTY

**DOUGLAS
034** Ⓢ

ROUTES
E-AD-AH-AM-VV

SHEET 10 OF 12



WEBSTER

WRIGHT

COUNTY

N T Y

C H R I S T I A I

T A N E Y

C O U N T Y

M A R K T W A I N
N A T I O N A L
F O R E S T

O Z A R K

DOUGLAS
034 ⑧

ROUTES
O-KK-PP-Y

SHEET 11 OF 12

