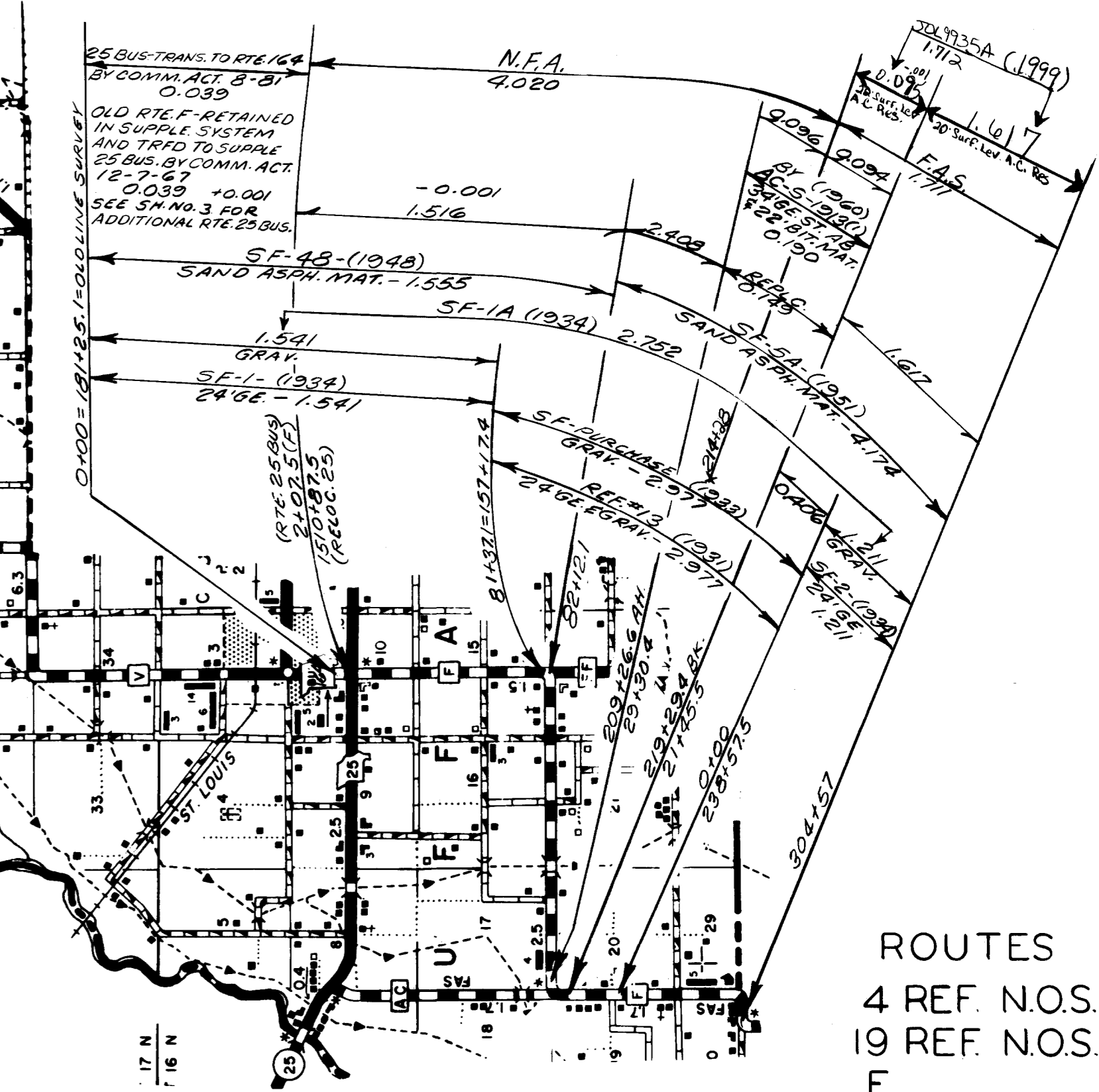


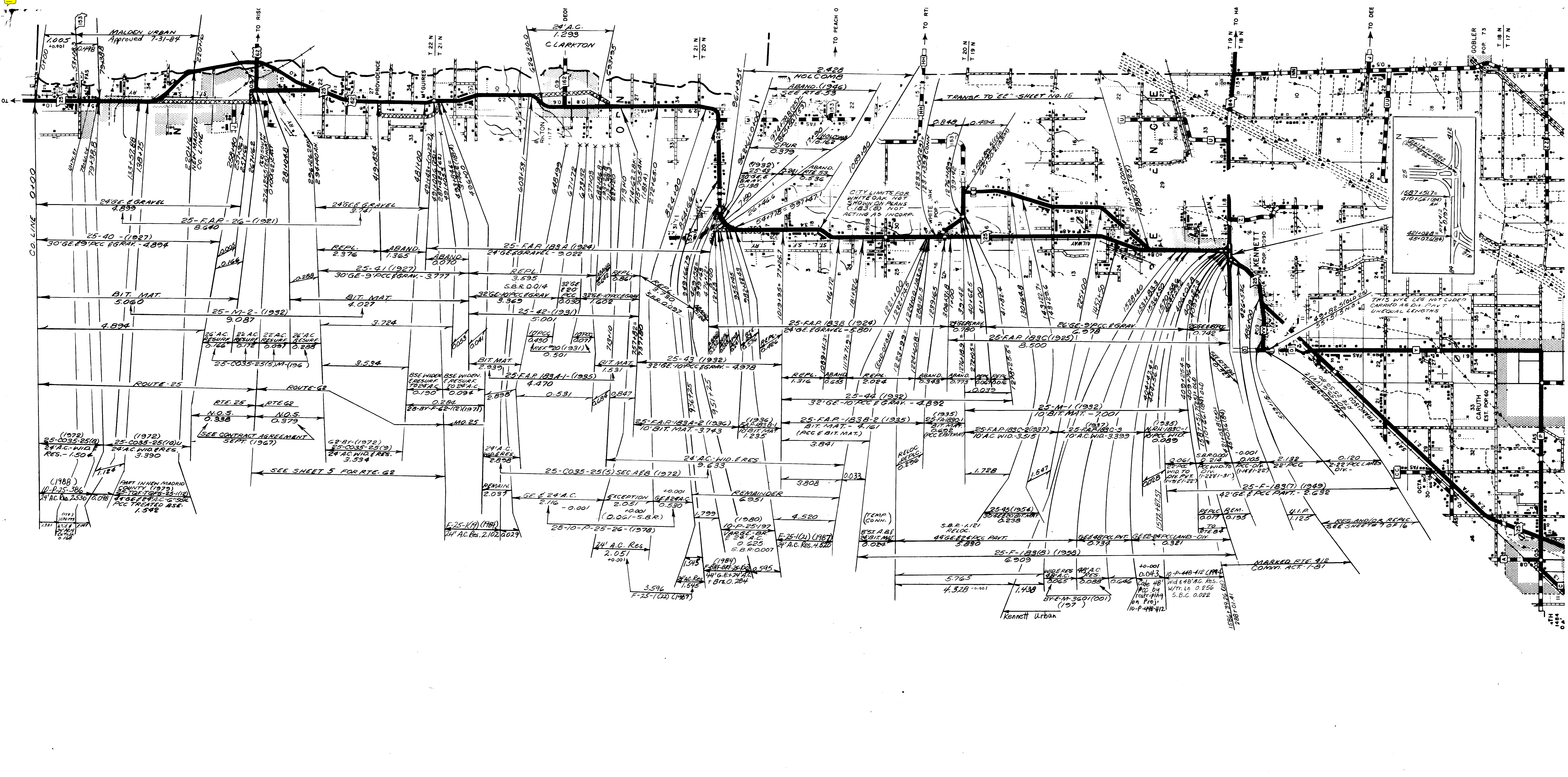
AR K A N S A S

AR K A N S A S



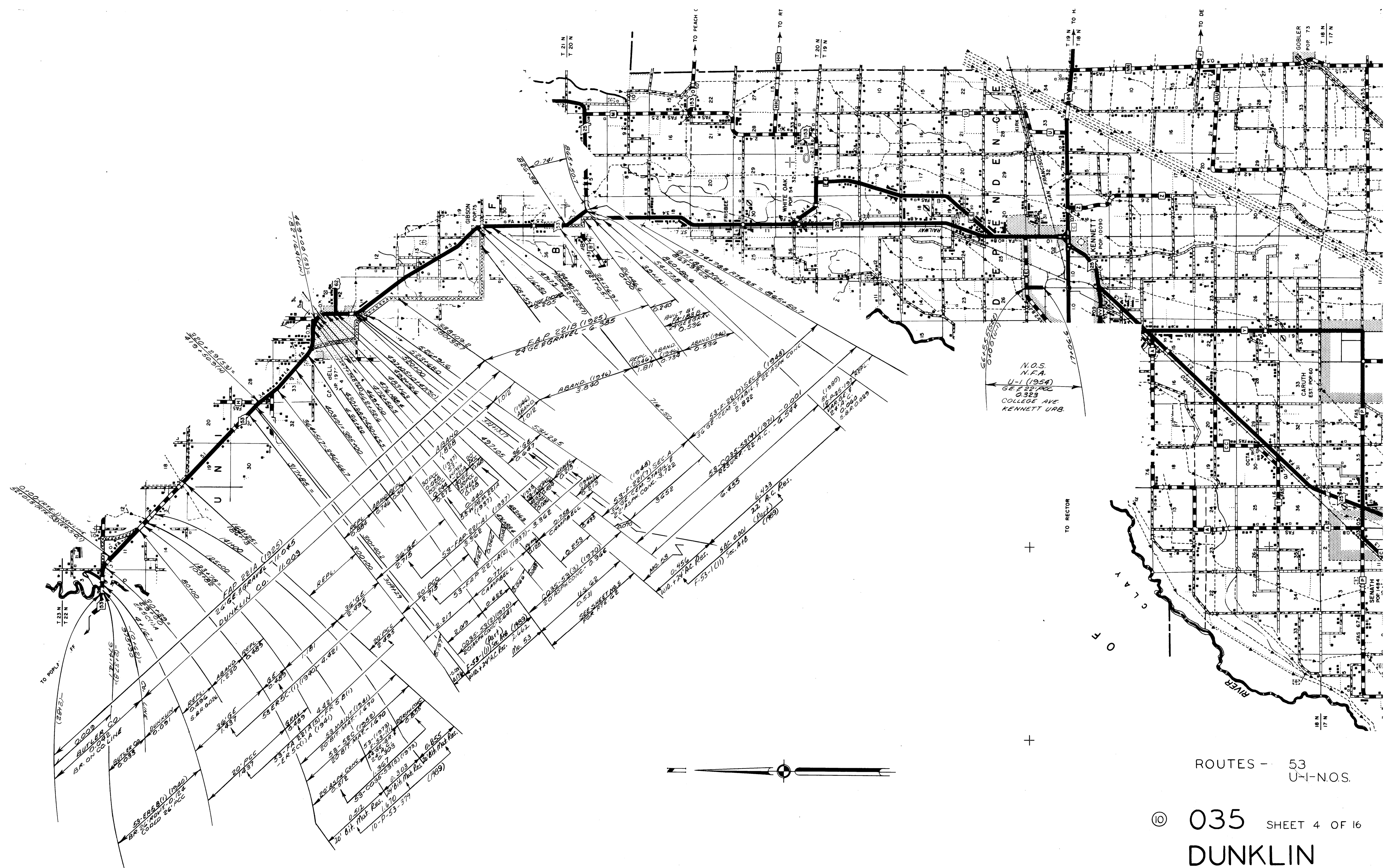
ROUTES
4 REF. N.O.S.
19 REF. N.O.S.
F
K

⑩ 035 SHEET 1 OF 16
DUNKLIN



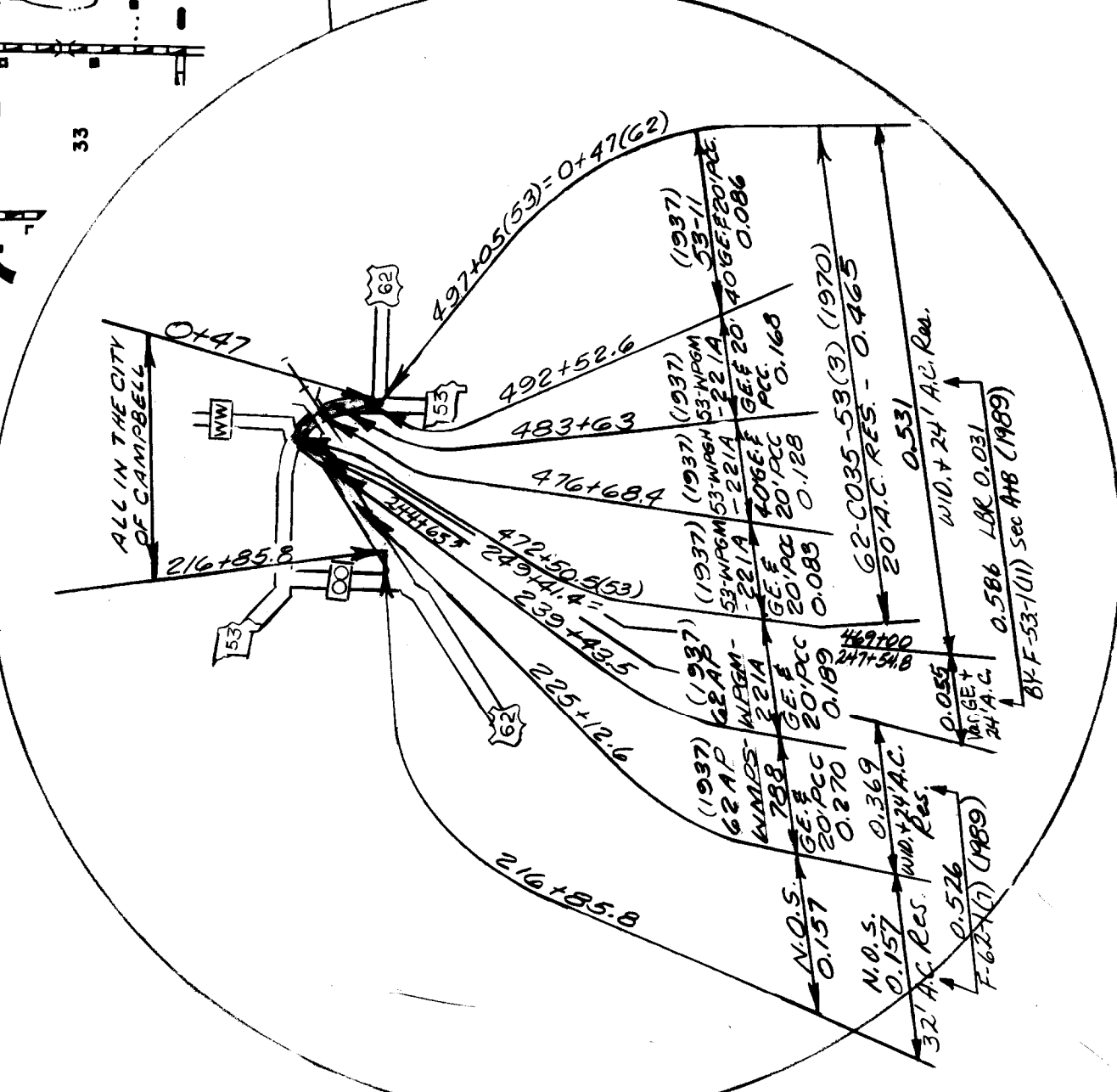
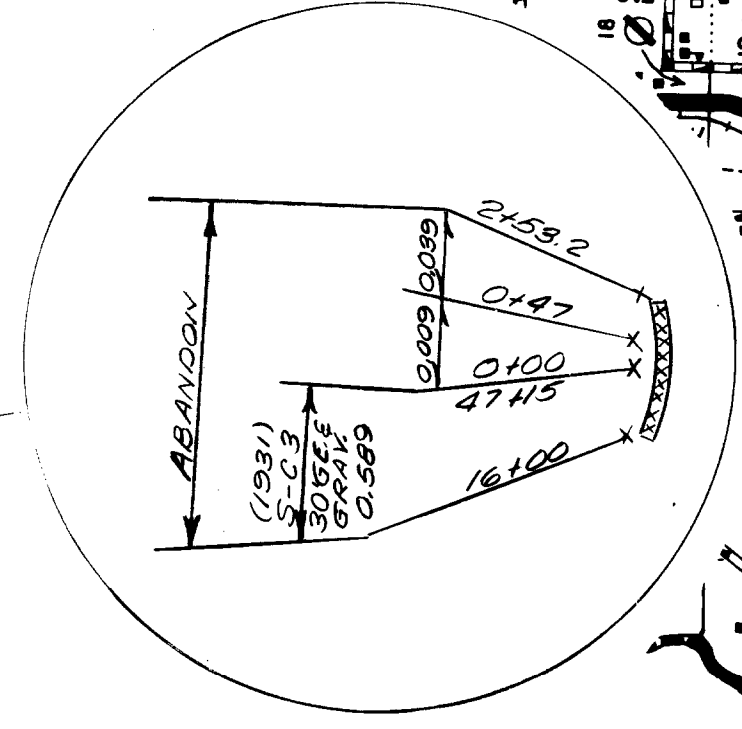
ROUTES - 25
412 (PART)

© 035 SHEET 2 OF 16
DUNKLIN



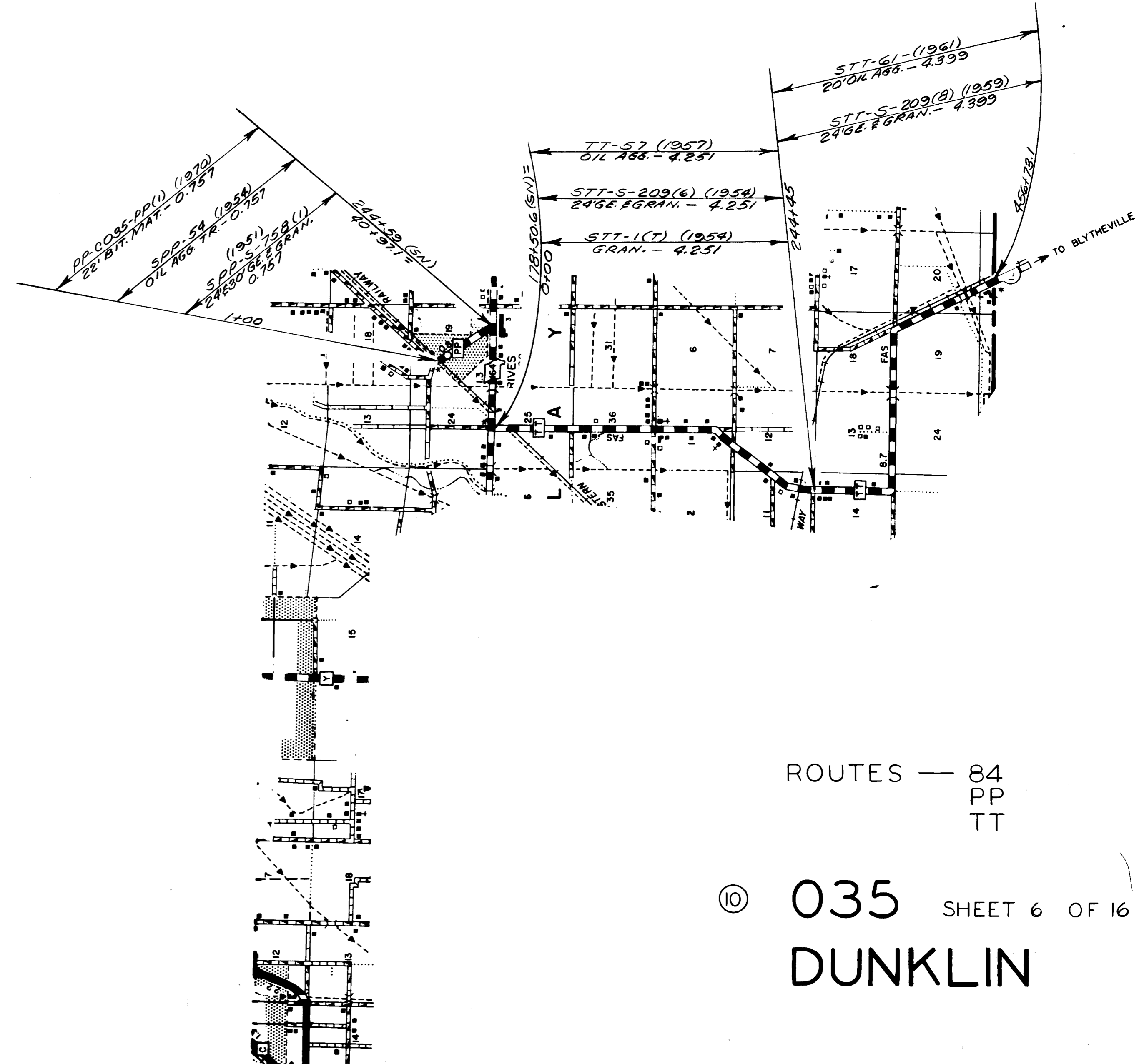
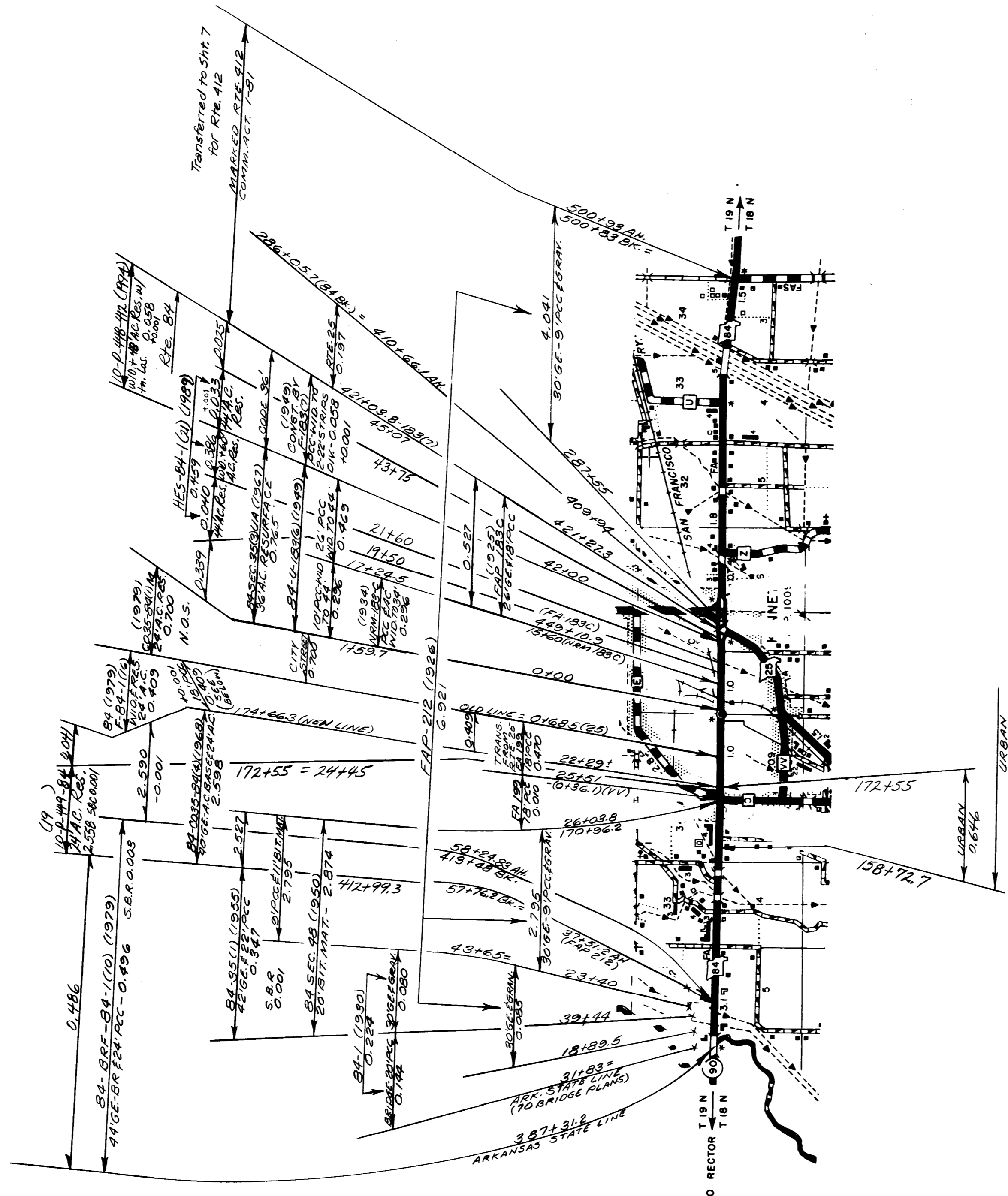
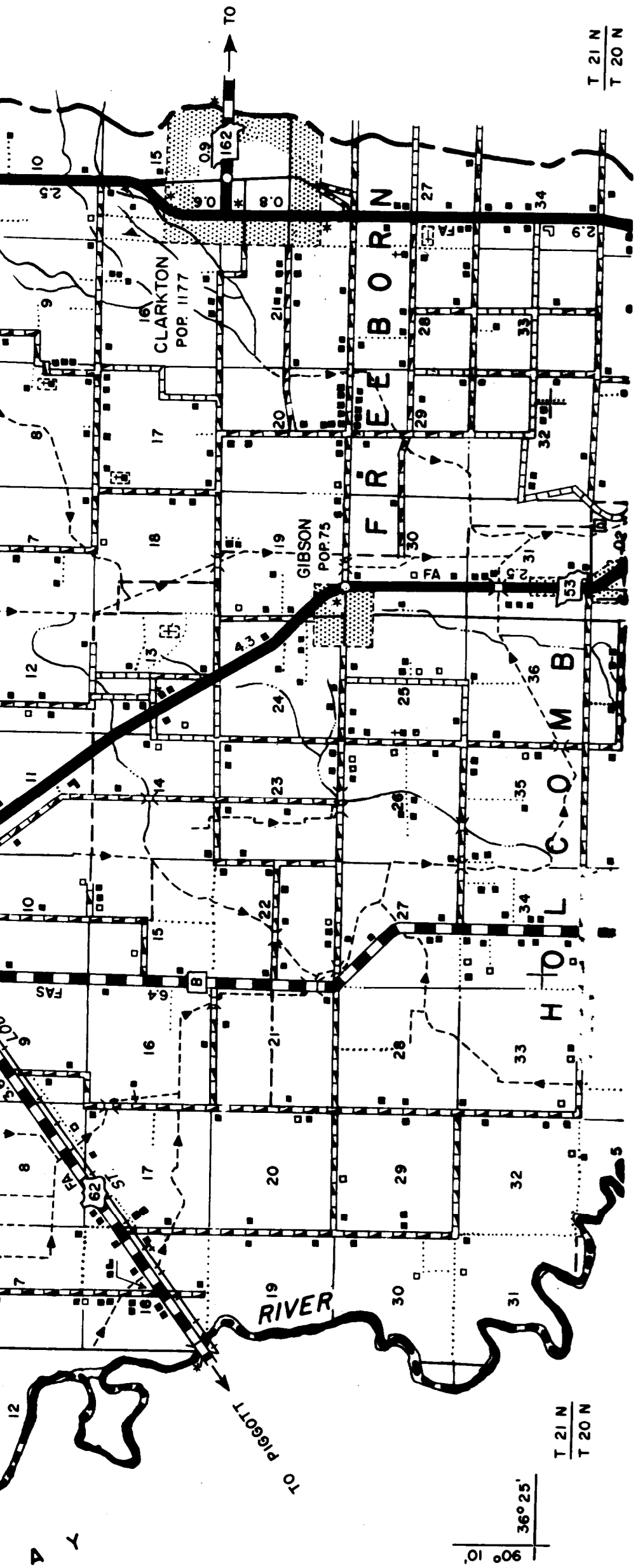
ROUTES - 53
U-I-N.O.S.

© 035 SHEET 4 OF 16
DUNKLIN

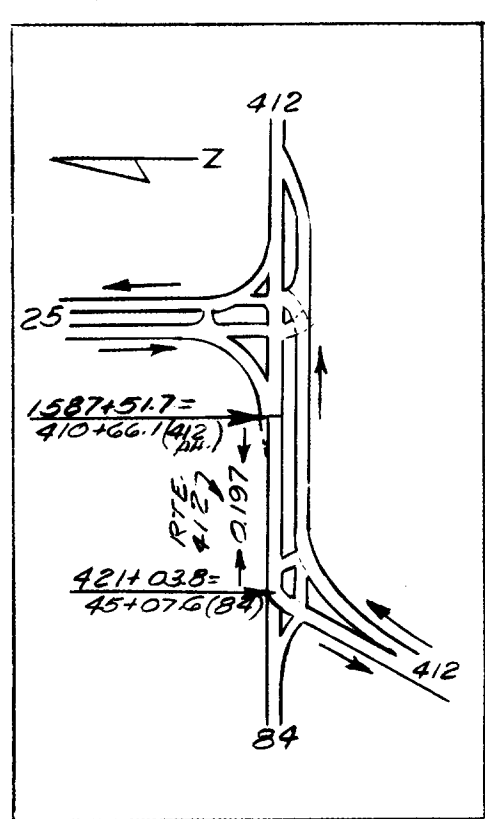
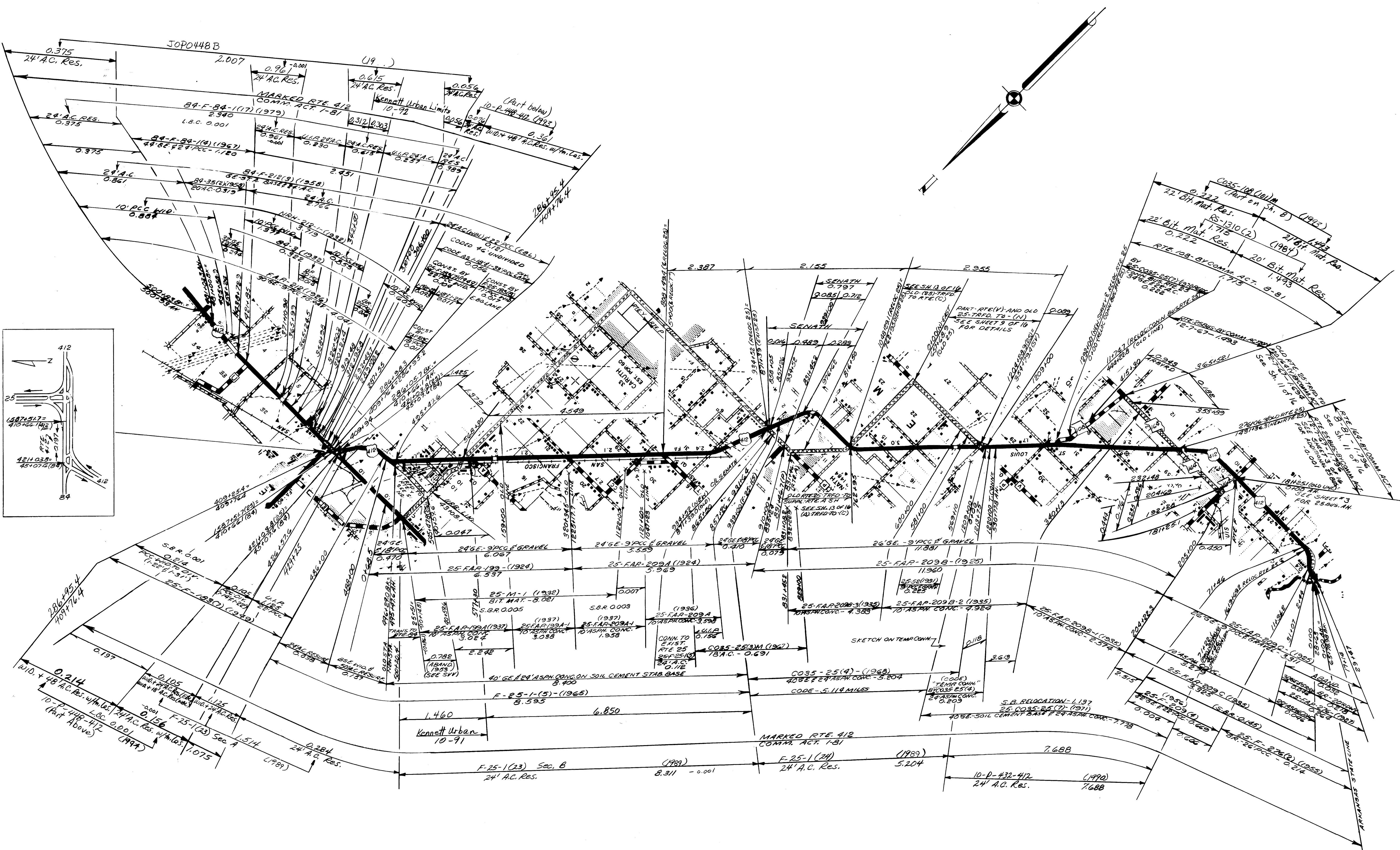


ROUTES - 62
Y
VV

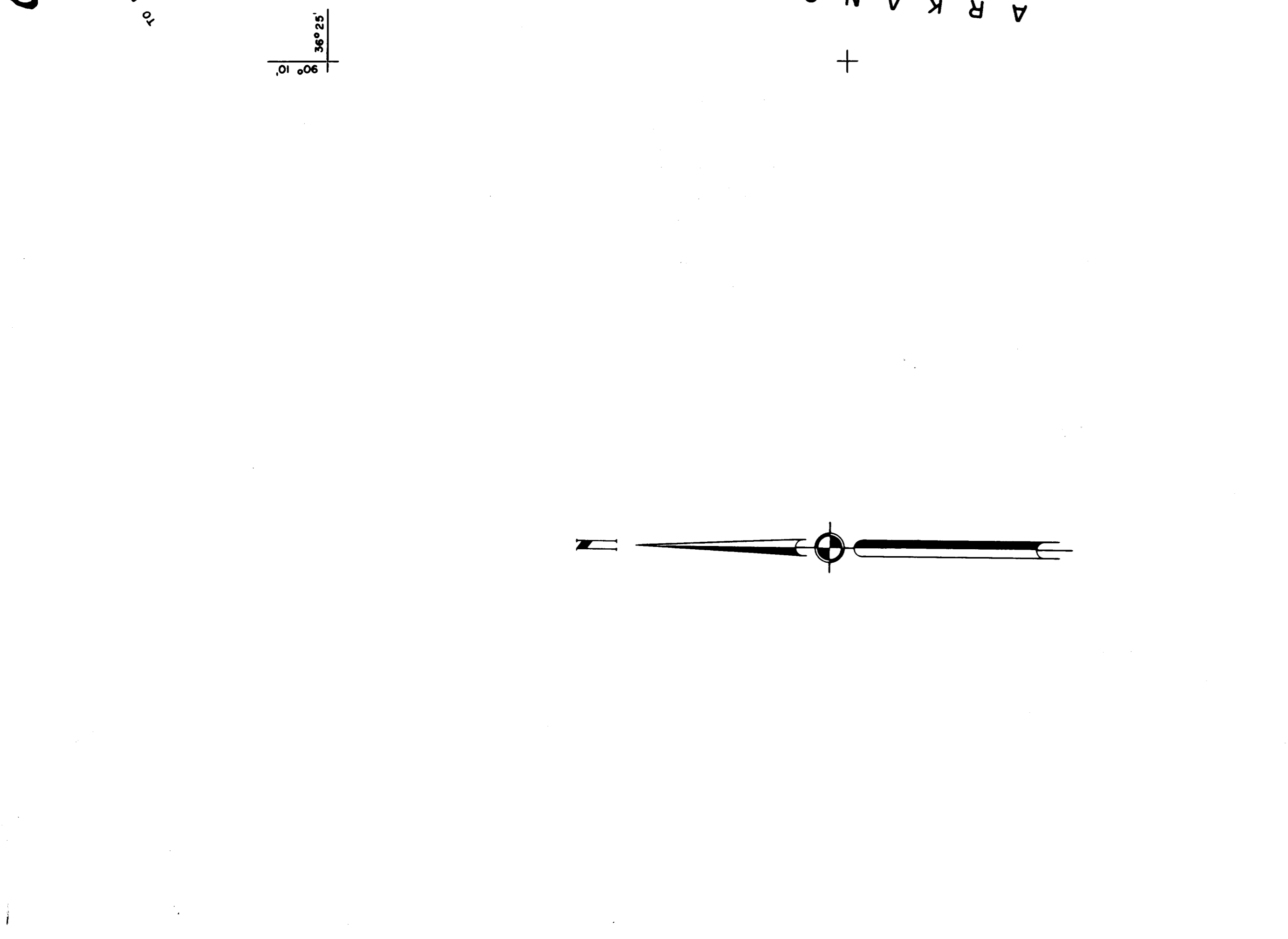
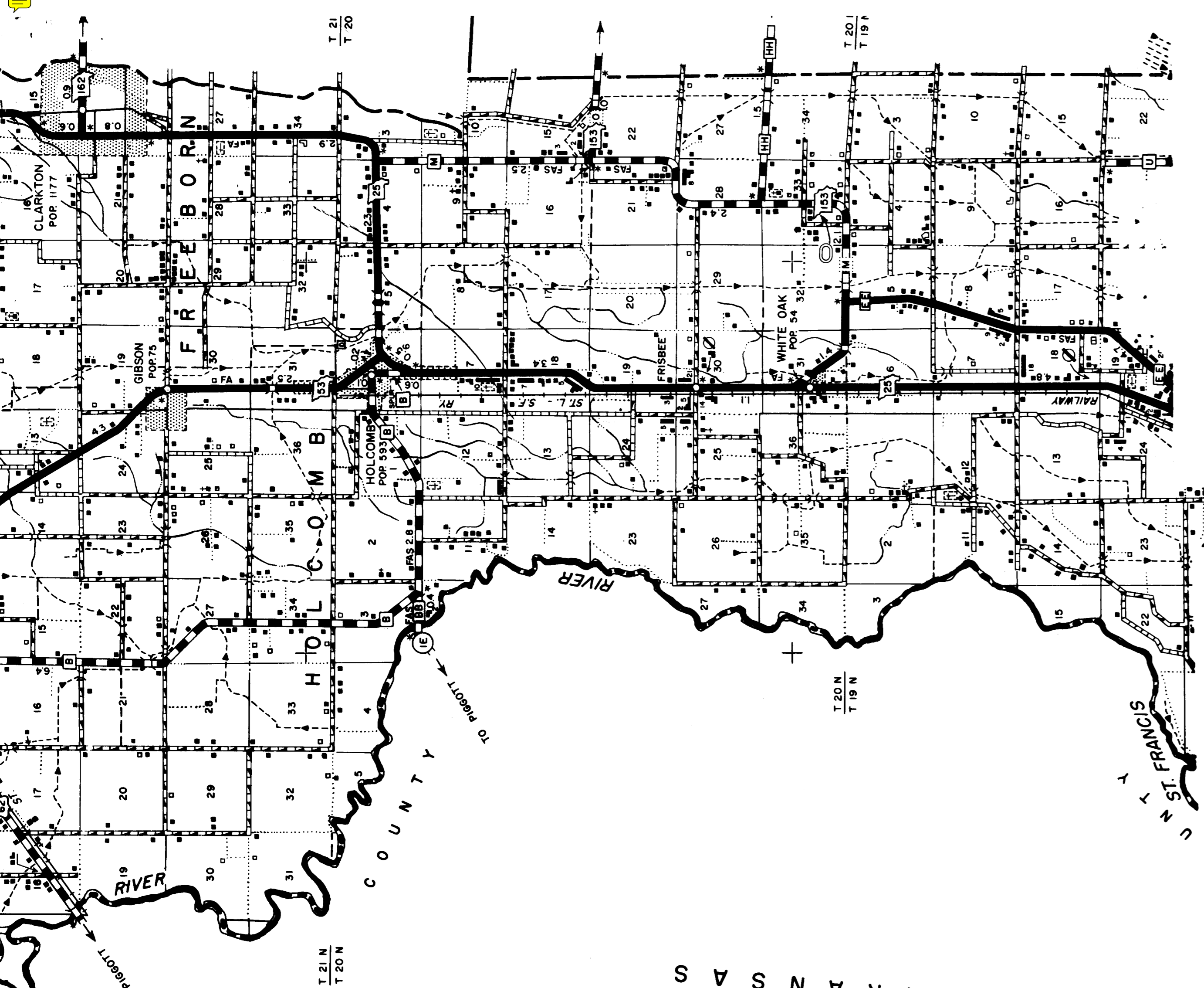
© 035 SHEET 5 OF 16
DUNKLIN



ROUTES — 84
 PP
 TT
 © 035 SHEET 6 OF 16
 DUNKLIN



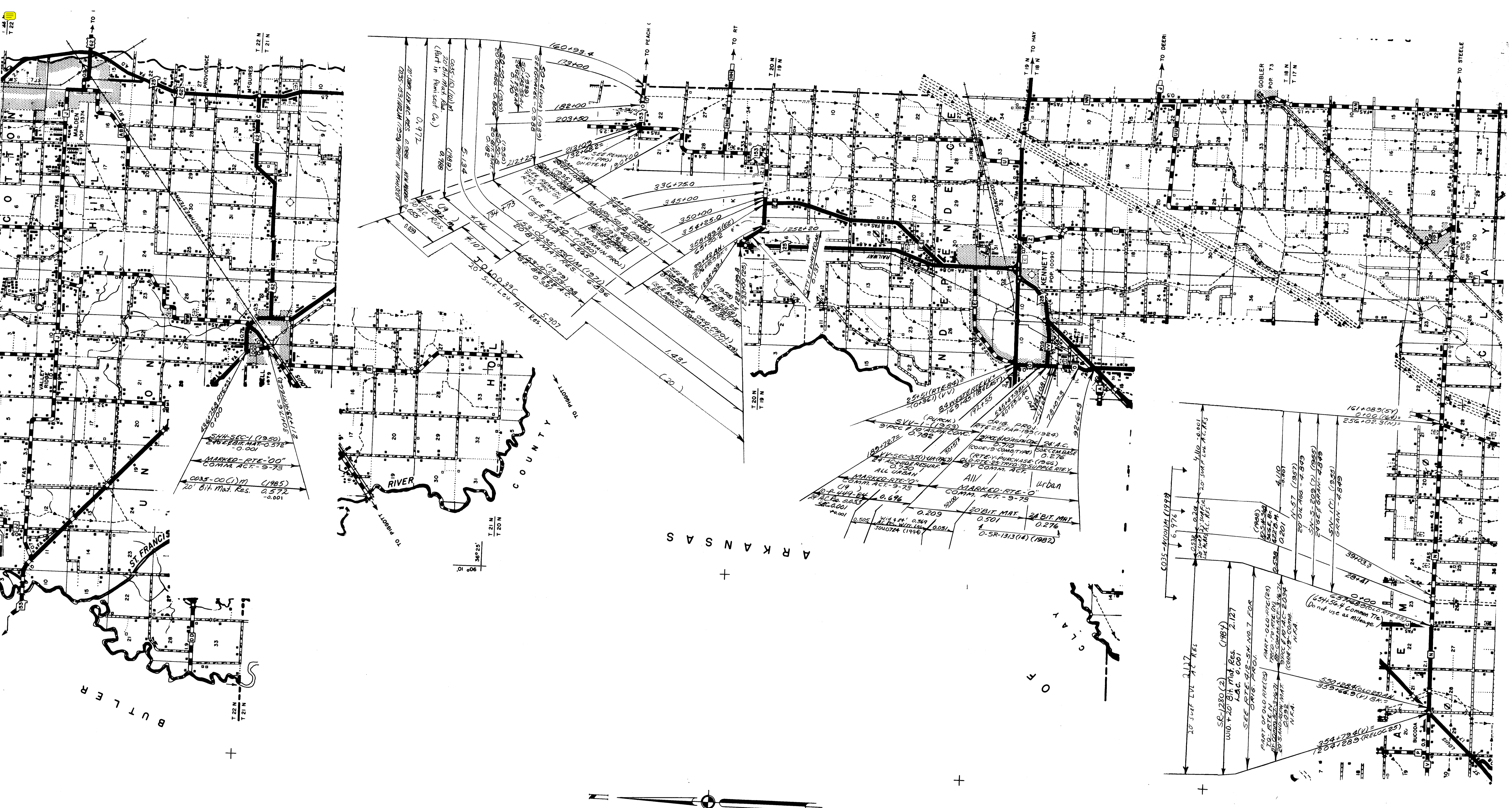
ROUTES
 108 (PART)
 164 (PART)
 412 (PART)



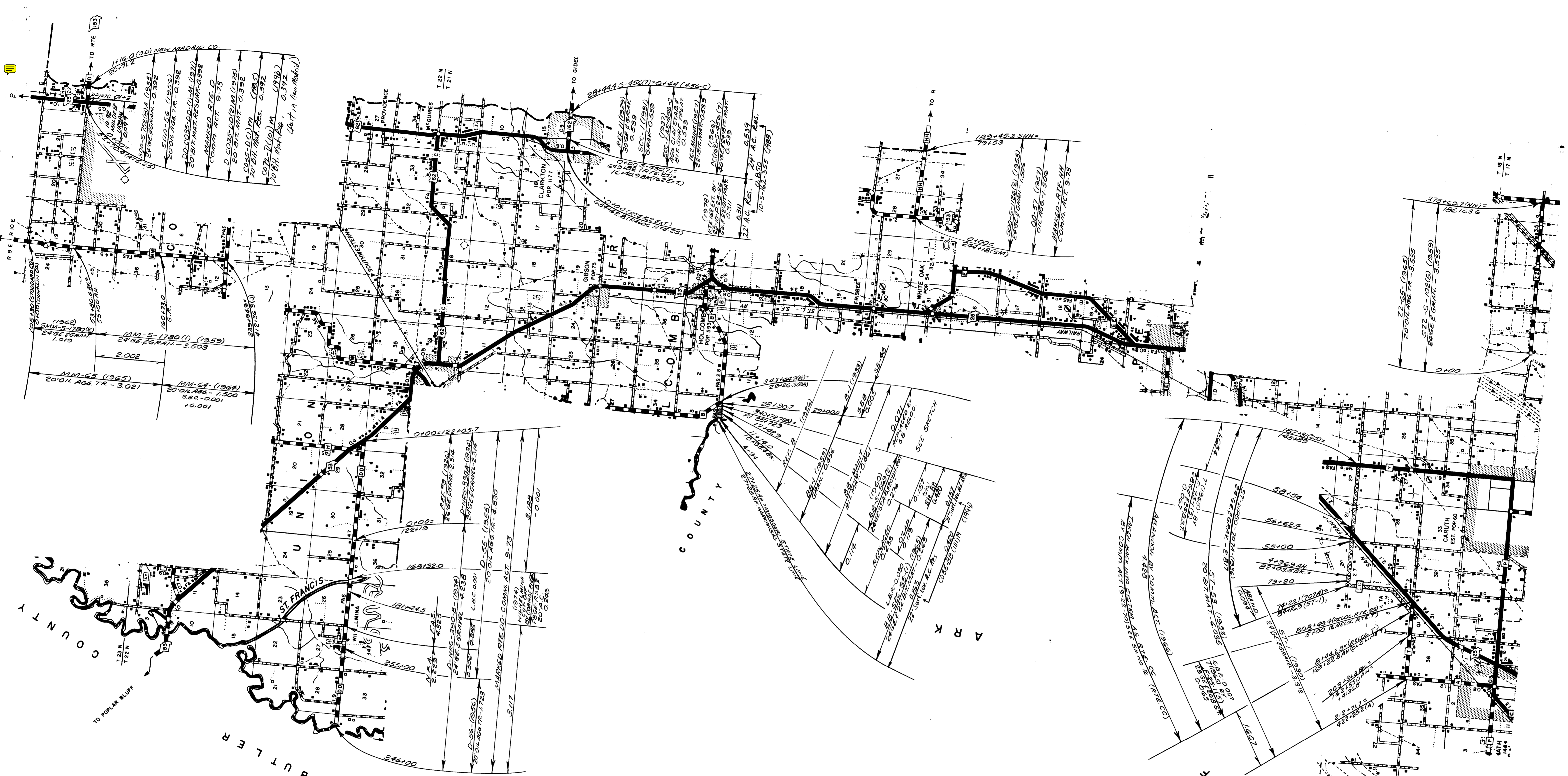
20' SUBE LK 0.504
 20' SUBE LK 0.150 + 0.001
 P-SR-1228 (1) (1988)
 WID & 24 BIT MAT RES 4.279
 R.T.E. PURCHASE (1966)
 21000 394 3.523 - 0.001 (08)
 11317.2 (N-EAST-NORTH)
 11314.3 (P-WEST)
 18.286
 8457.0
 182.84
 24.28
 180100
 106100
 182.84
 24.28
 180100
 106100
 182.84
 24.28
 180100
 106100

- (Part on sh. 7)
- CO235-108 (10) M (1993)
20 BIT. MAT. RES. 3.451
 - 108-CO235-108 (1) M (1971)
20 BIT. MAT. 3.451
 - 108-52C (1952)
20 BIT. MAT. 3.451
 - MAINT. (1934)
20 BIT. MAT. 3.451
 - 108-AP PURCHASE (1929)
GRAVEL 3.451
 - REF #2 (1925)
26 G.E. & GRAVEL 3.451

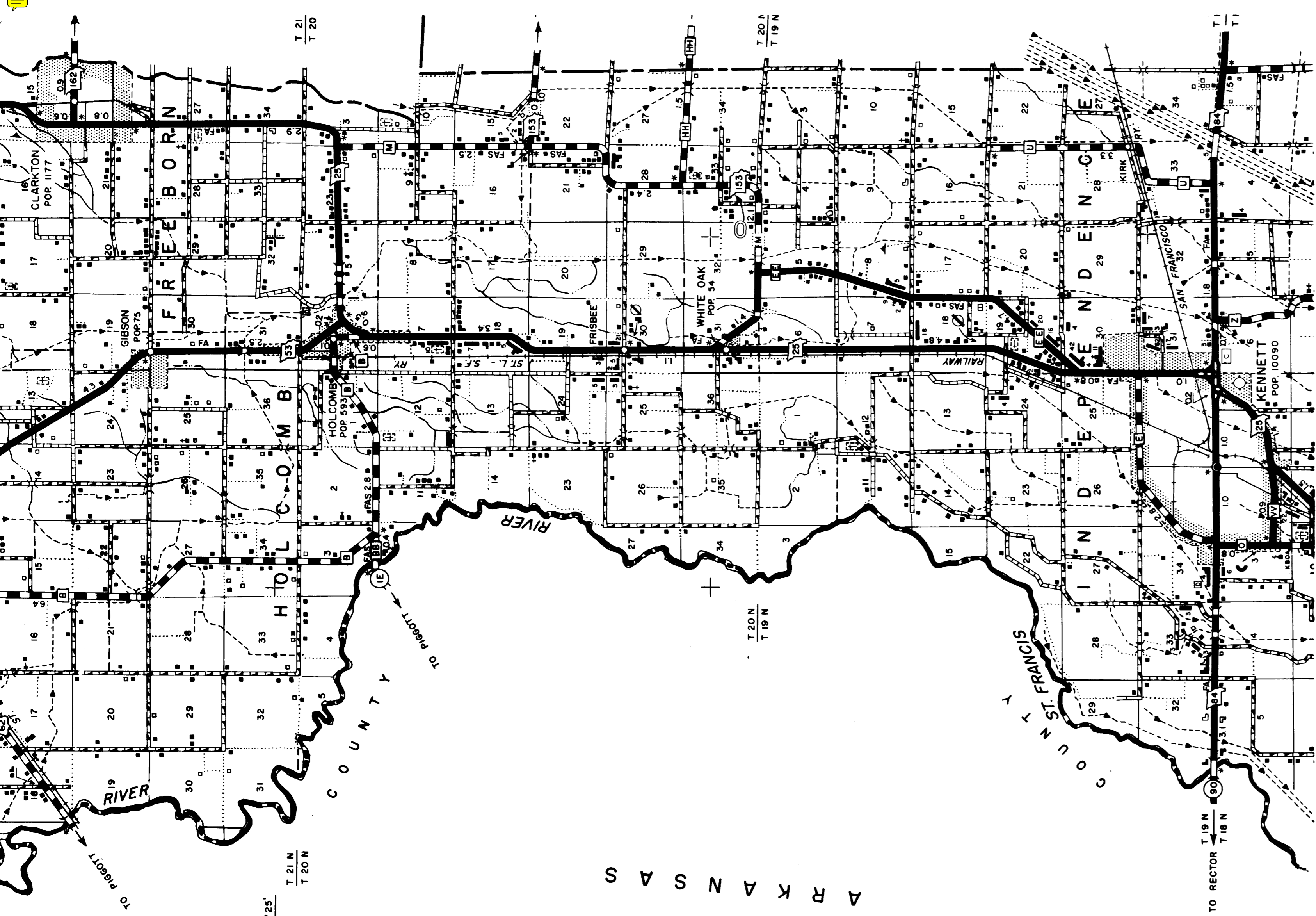
ROUTES - 108 (PART)
 P
 UU
 © 035 SHEET 8 OF 16
 DUNKLIN



ROUTES - 153
 00
 00

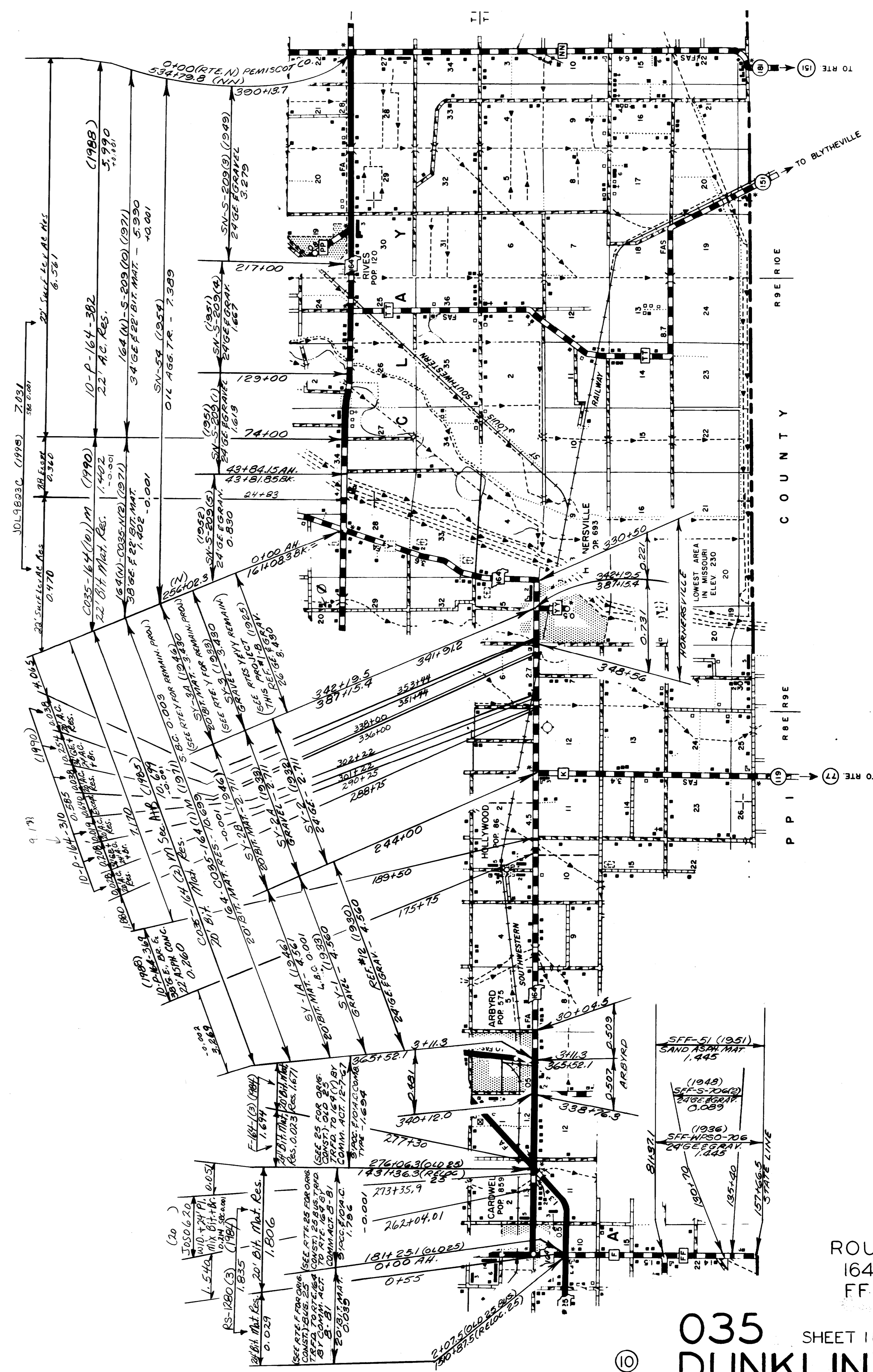


ROUTES - 162
 DT
 BB
 DD
 HH
 MM
 ZZ



AR K A N S A S

K O



AR K A N S A S

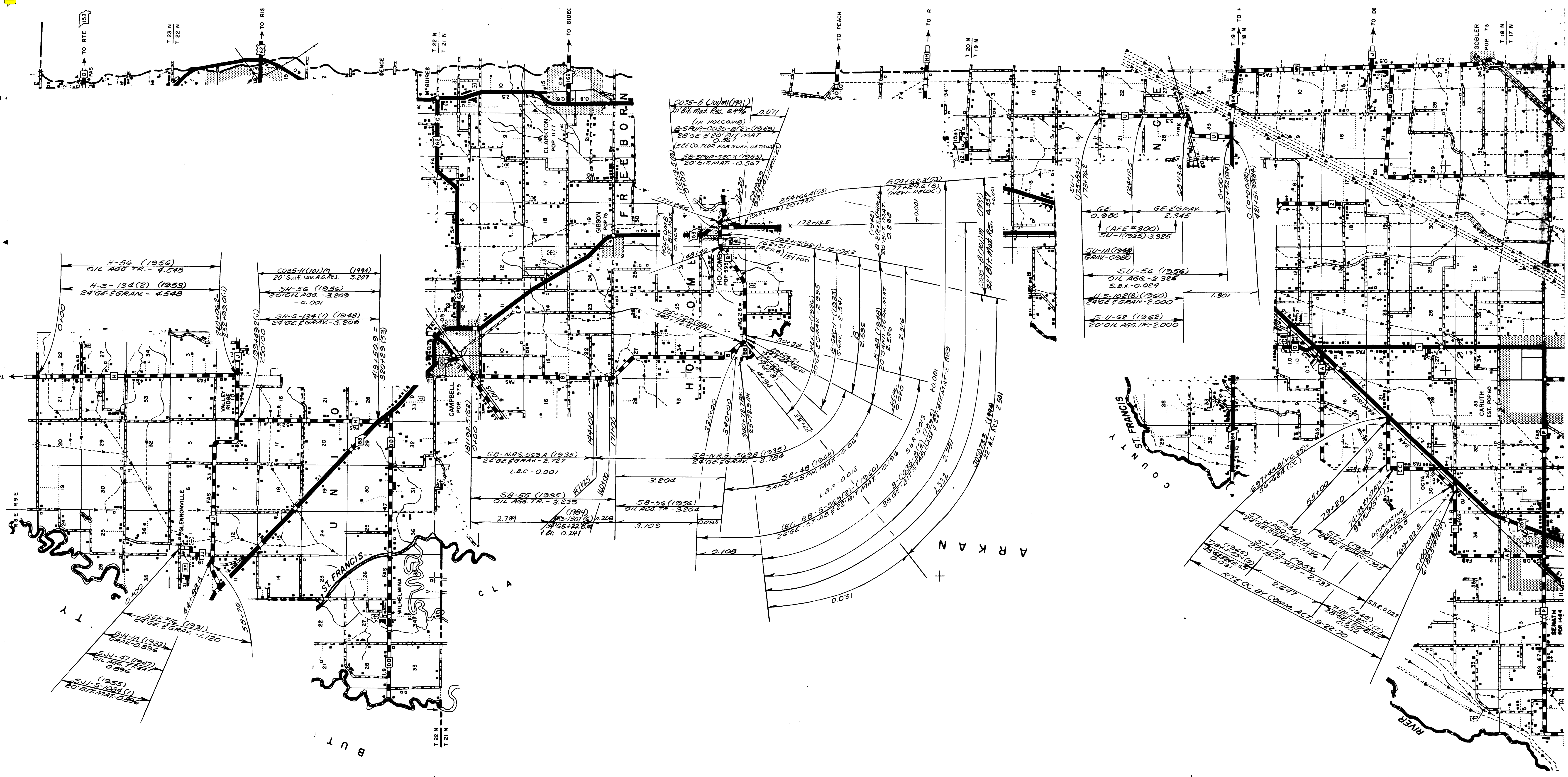
O F

ROUTES
164 (PART)
FF

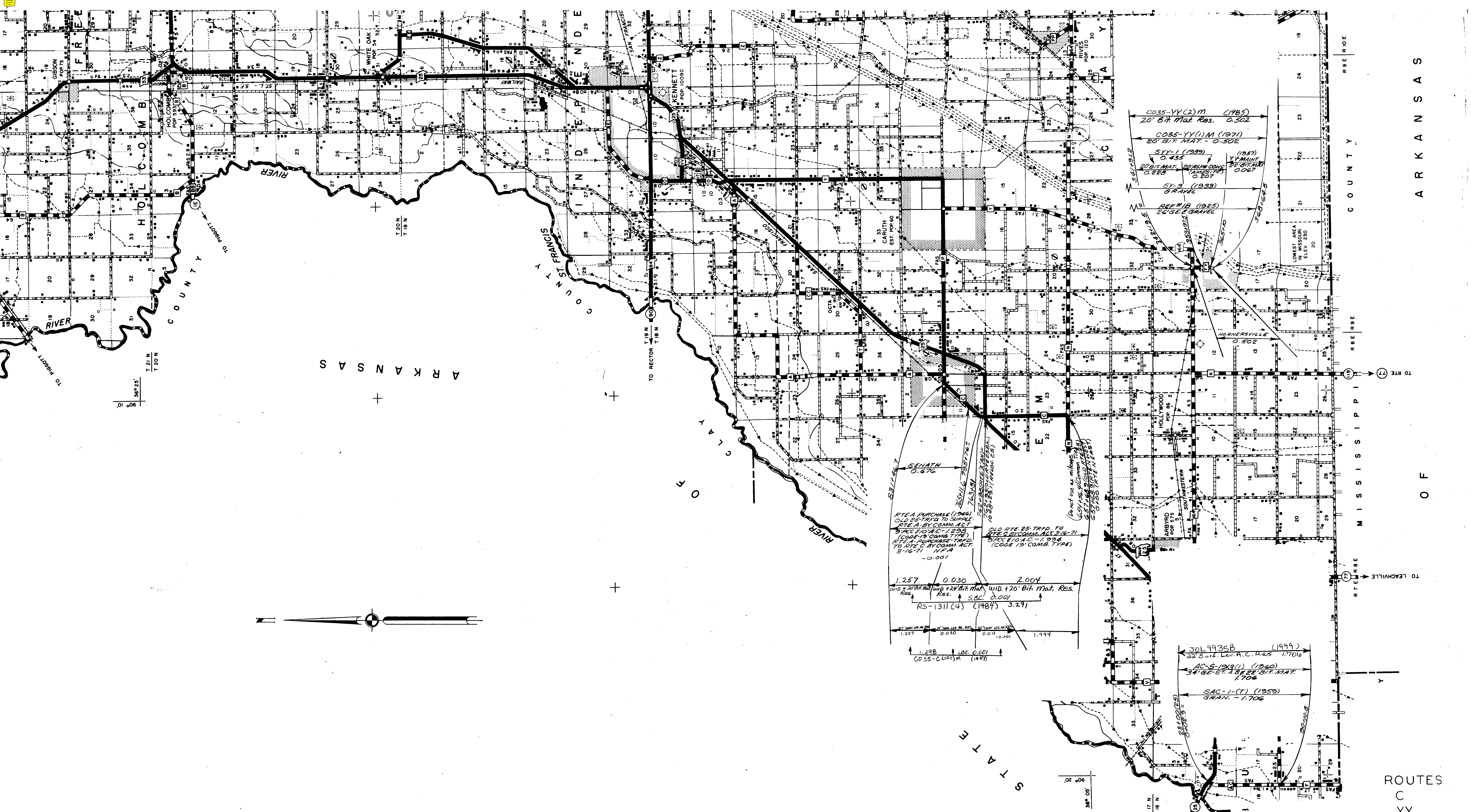
035
DUNKLIN

SHEET 11 OF 16

©



ROUTES - B
 BB SPUR
 H
 U
 CC
 JU



AR K A N S A S

A R K A N S A S

S T A T E

C O U N T Y

M I S S I S S I P P I

ROUTES
C
YY
AC

035 SHEET 13 OF 16

© DUNKLIN

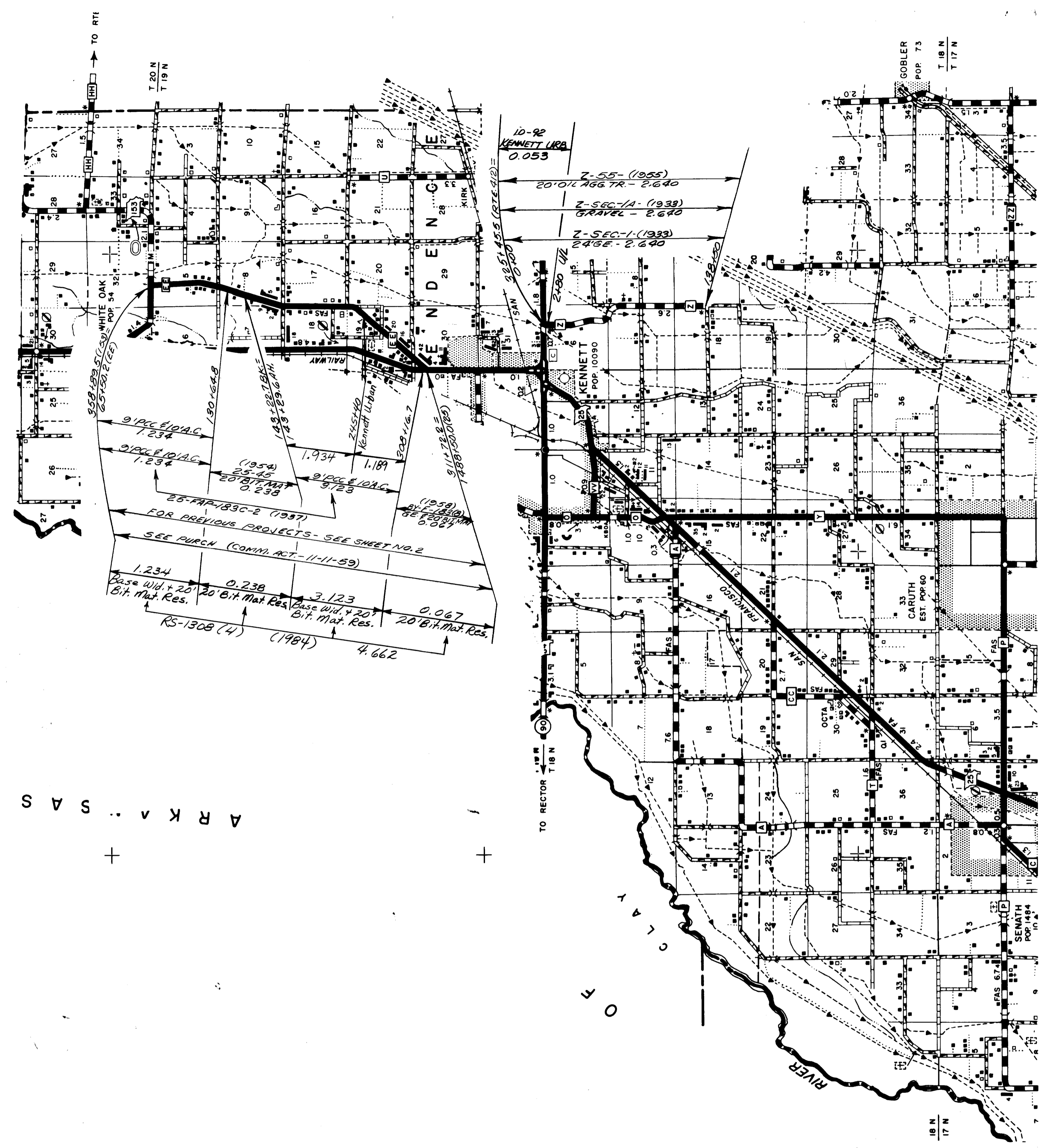
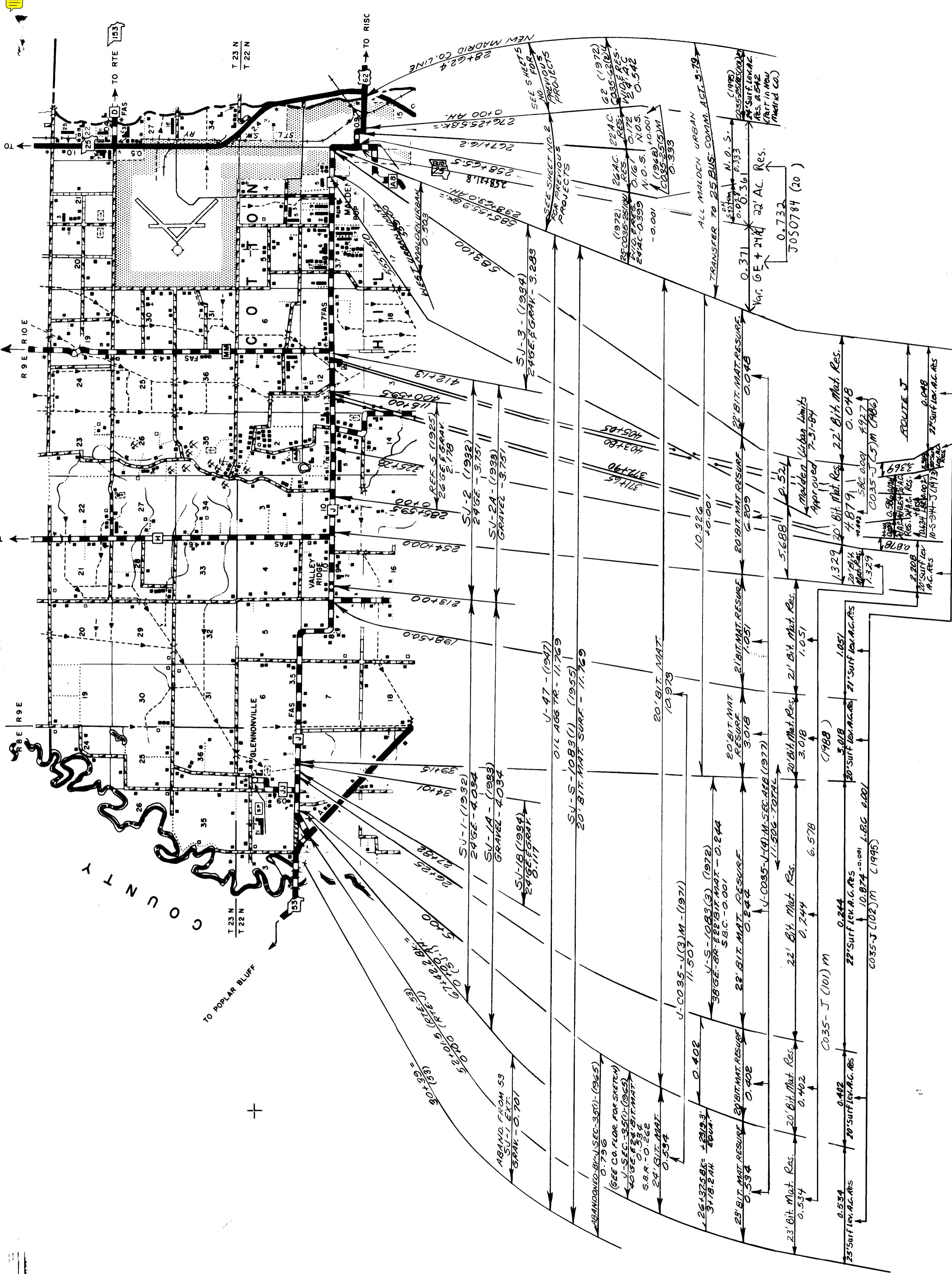


NW-S-1537(1) (1969)
 28' GE. GRAN. - 2,140
 NW-64 (1964)
 20' OIL AGG. TR. - 2,140
 NW-CO35-WW(1)M- (1972)
 20' BIT. MAT. RESURF. - 5,575
 CO35-WW (2)M
 20' Bit. Mat. Res. (1986)
 CO35-WW (1)M
 20' Surf. Lev. AC. Res. (1994)
 5,575

SM-1 (1934)
 24' GE. - 2,513
 SM-NRS-501A (1935)
 GRAVEL - 2,513
 SM-50 (1950)
 20' BIT. MAT. - 2,513
 FOR REMAINDER THESE
 PROJECTS SEE RTE 153
 (0.004-L.B.R.)
 RTE. CONN. BY
 25' 10" P. RES. (1974)
 GE. P. BIT. MAT.
 0.066
 2.451
 2.177
 10.001
 0.033
 0.227
 0.013
 20' AC. P. RES. (1974)
 Res. 122 AC. Res.
 11.78
 2.273
 10-S-392-M (1993)

22' Surf. Lev. AC. Res. (1978)
 2.679
 E-10-U-EE-27 (1975)
 22' BIT. MAT. - 2,772
 MARKED R.T.E.
 COMM. ACT. 5-78
 COFF. S. 83(2) (1949)
 COM. ST. 22' 8.57
 2.772 (GABAN)
 E-S-323(1) (1949)
 32' GE. - 2,772
 1964351

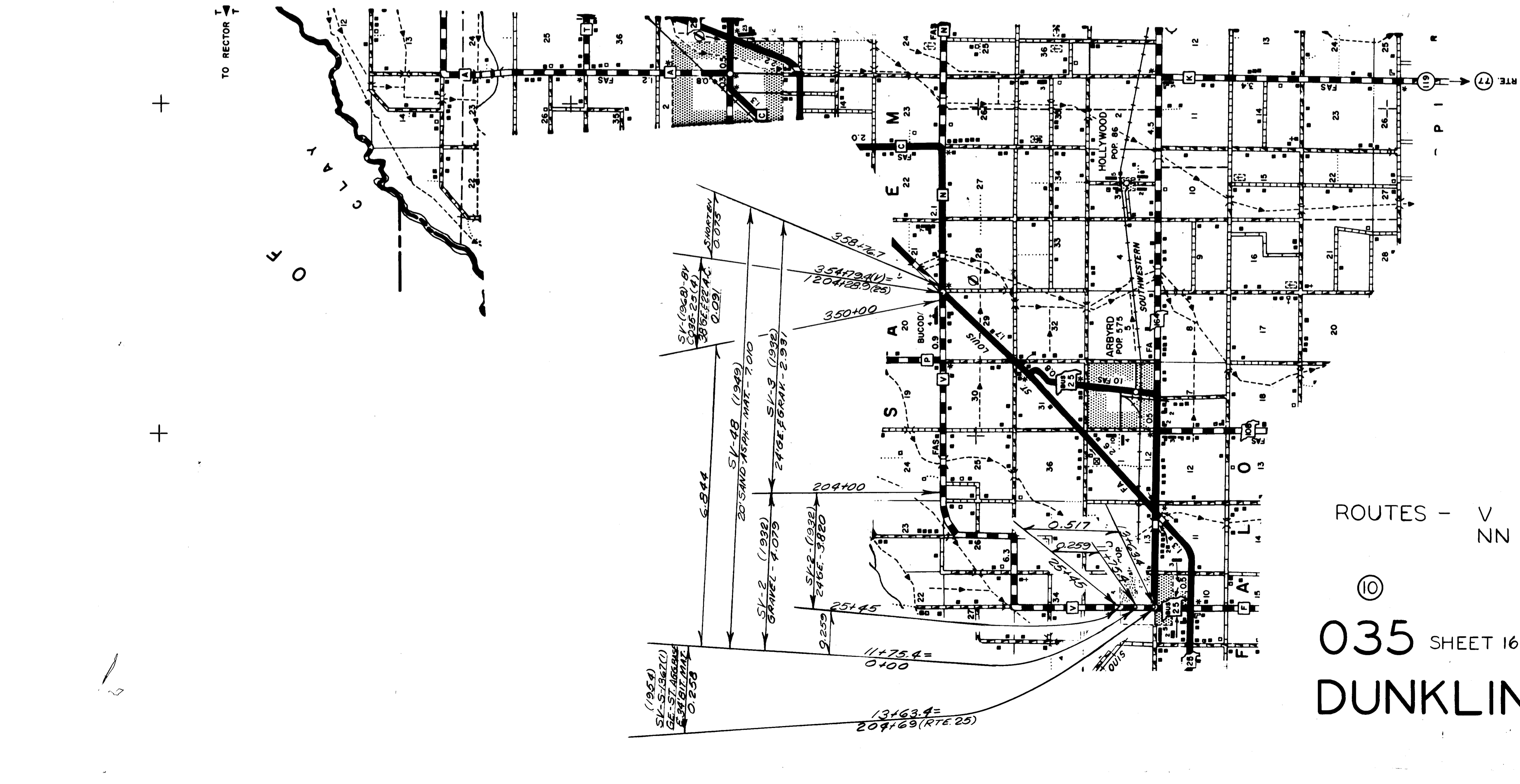
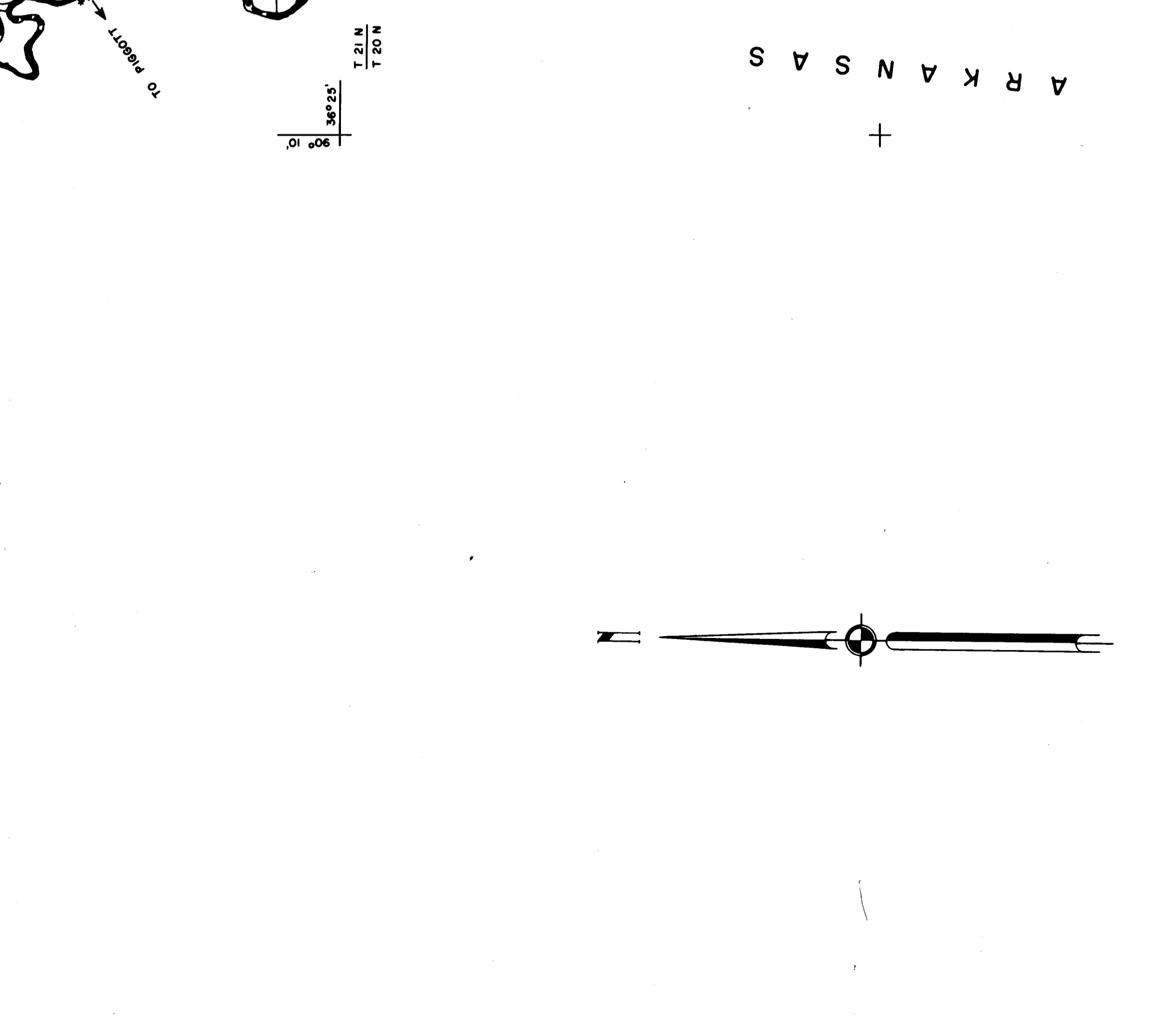
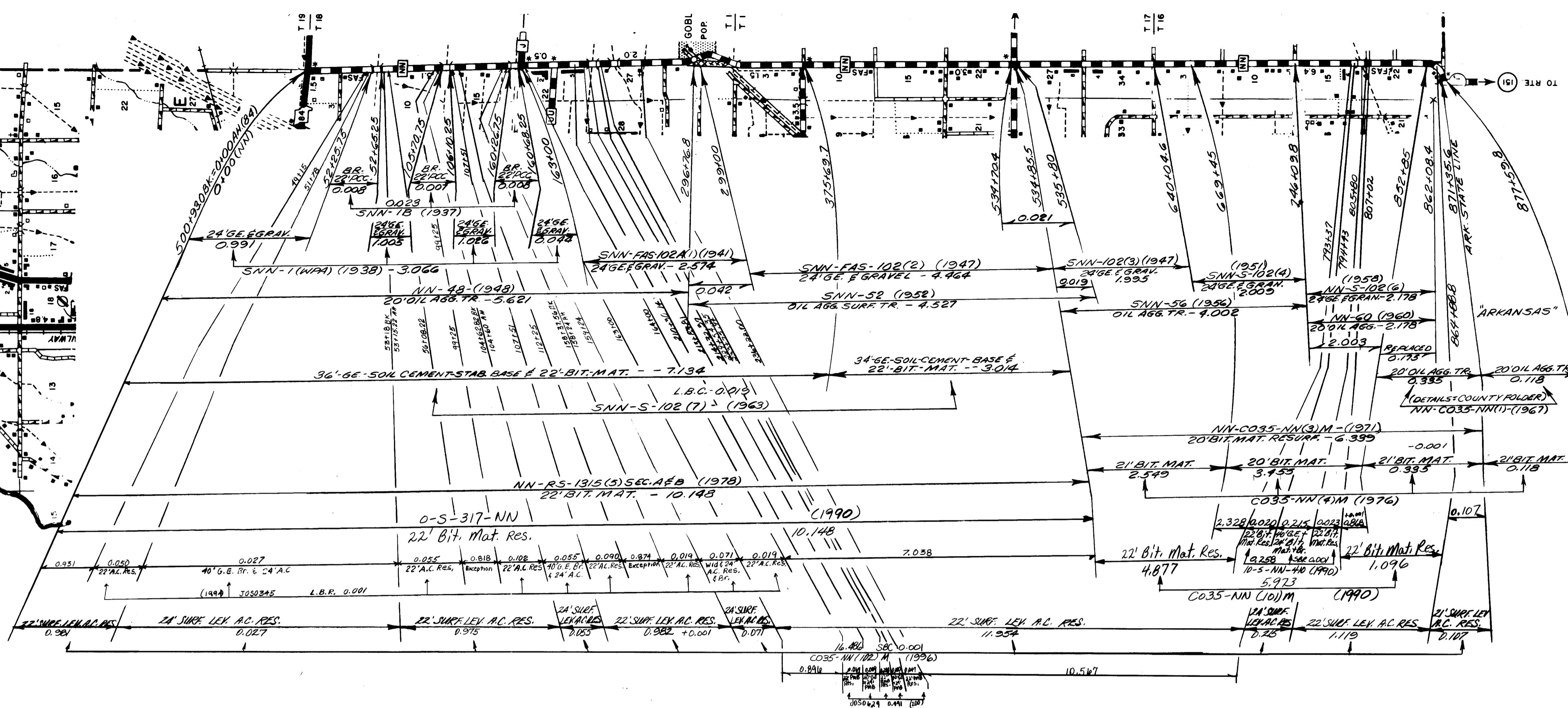
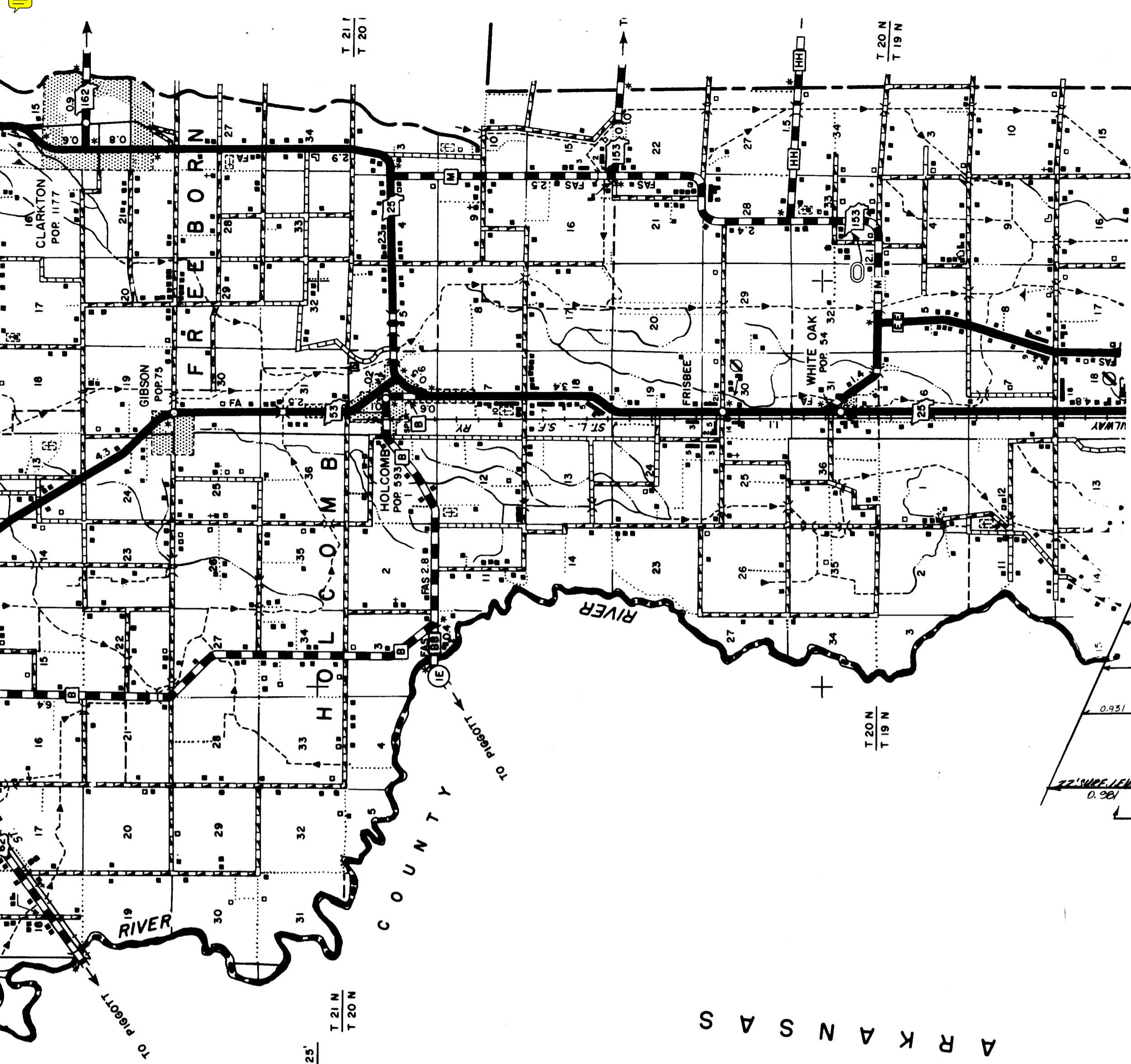
ROUTES - E
 M
 WW
 AB



A R K A N S A S

ROUTES - J
Z
EE
25 BUS. (PART)

© 035 SHEET 15 OF 16
DUNKLIN



ROUTES - V NN
⑩
035 SHEET 16 OF 16
DUNKLIN