

S.B.L. Closed  
Pyrme de Terre  
Bridge defective



© 039  
GREENE  
COUNTY

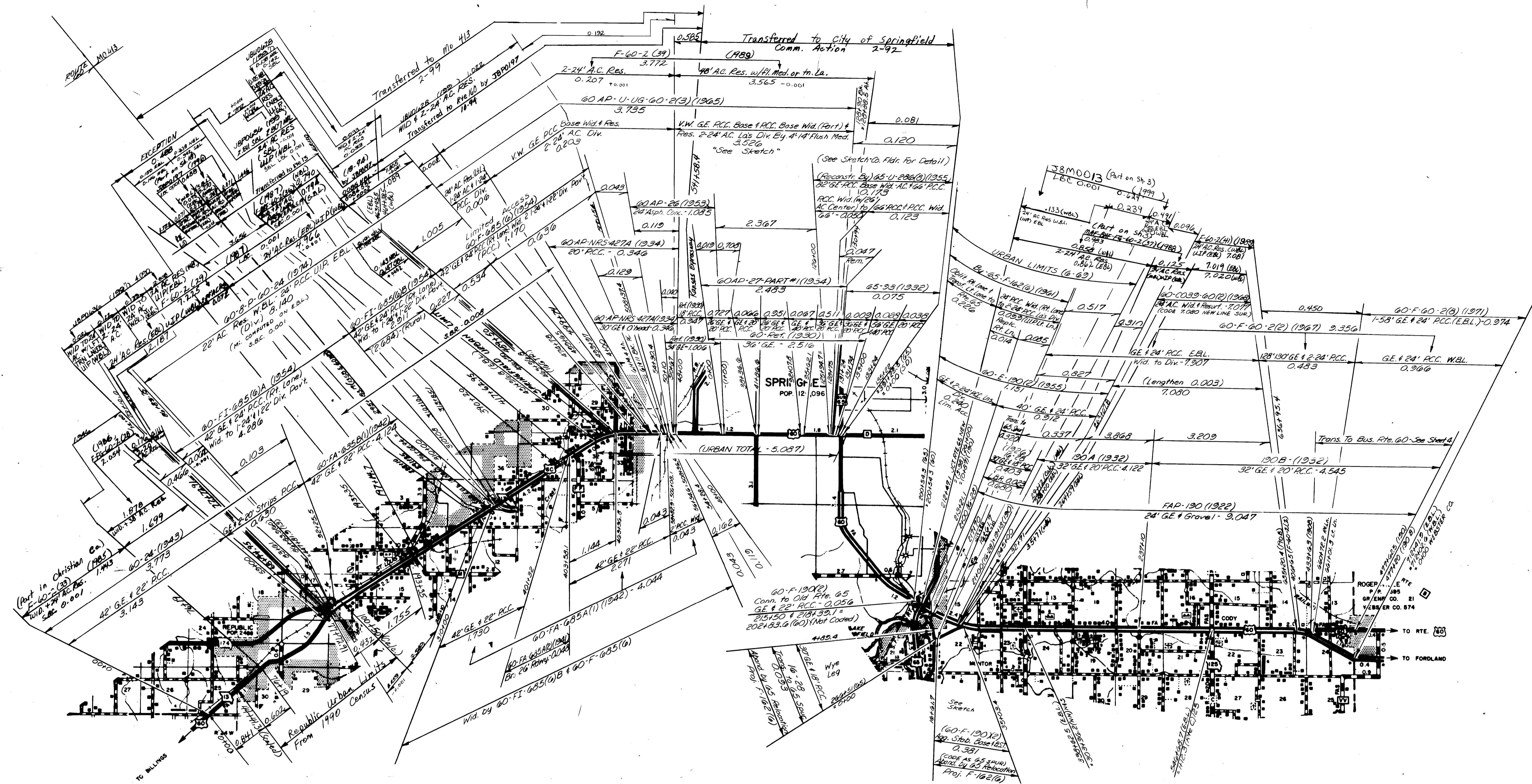
ROUTES  
I-44 Bus. Lp. (Part)  
60(Part) - 65 - 65 Bus. (PART)

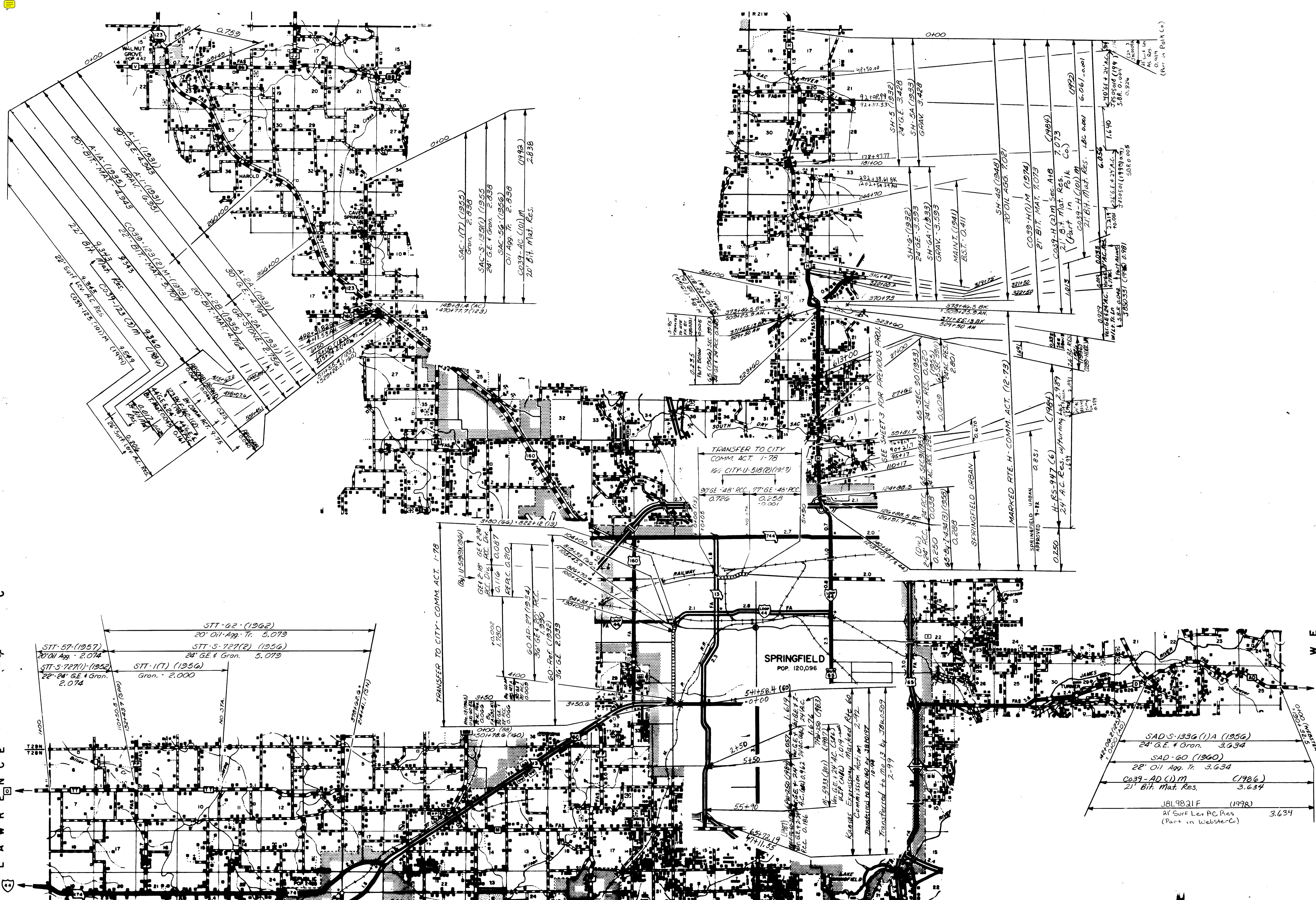
SHEET 3 OF 18











© 039  
**GREENE COUNTY**  
 ROUTES  
 123-AC-H-AD-TT  
 TWO RTES. TRANS.  
 TO CITY  
 + 13 (Part)  
 SHEET 8 OF 18

SAD-S-1336(1)A (1956)  
 24' G.E. + Gron. 3.634  
 SAD-60 (1960)  
 22' O'11 Agg. Tr. 3.634  
 Co39-AD(1)M (1986)  
 21' Bit. Mat. Res. 3.634  
 J8L9821F (1998)  
 21' Surf Lev AC Res (Part in Webster Co.) 3.634

TRANSFER TO CITY- COMM. ACT. 1-78  
 (By) U-519(194)  
 GE P-18' GE P-24' AC Div. 0.087  
 GE P-14' AC Div. 0.116  
 RE P-10' AC Div. 0.210  
 60 AP-27 (1934)  
 36' GE + 30' P.C.  
 60' Ref. (1932)  
 30' GE 2.039

65-72-19  
 71+11.35  
 65-72-19  
 71+11.35  
 Kansas Expressway Marked Rte 60  
 Commission Act 114  
 70-44  
 Transferred to Me 13 by SBuc509  
 2-99

MARKED RTE. H. COMM. ACT. (2-73)  
 SPRINGFIELD URBAN  
 APPROVED 9-81  
 H-RS-947 (6) (1984)  
 24' AC Res. w/Turning Ls. 2.989  
 24' AC Res. 1.691

TRANSFER TO CITY  
 COMM. ACT. 1-78  
 166 CITY-U-518(2) (1957)  
 90' GE + 48' P.C. 77' GE + 48' P.C.  
 0.726  
 0.255  
 0.001

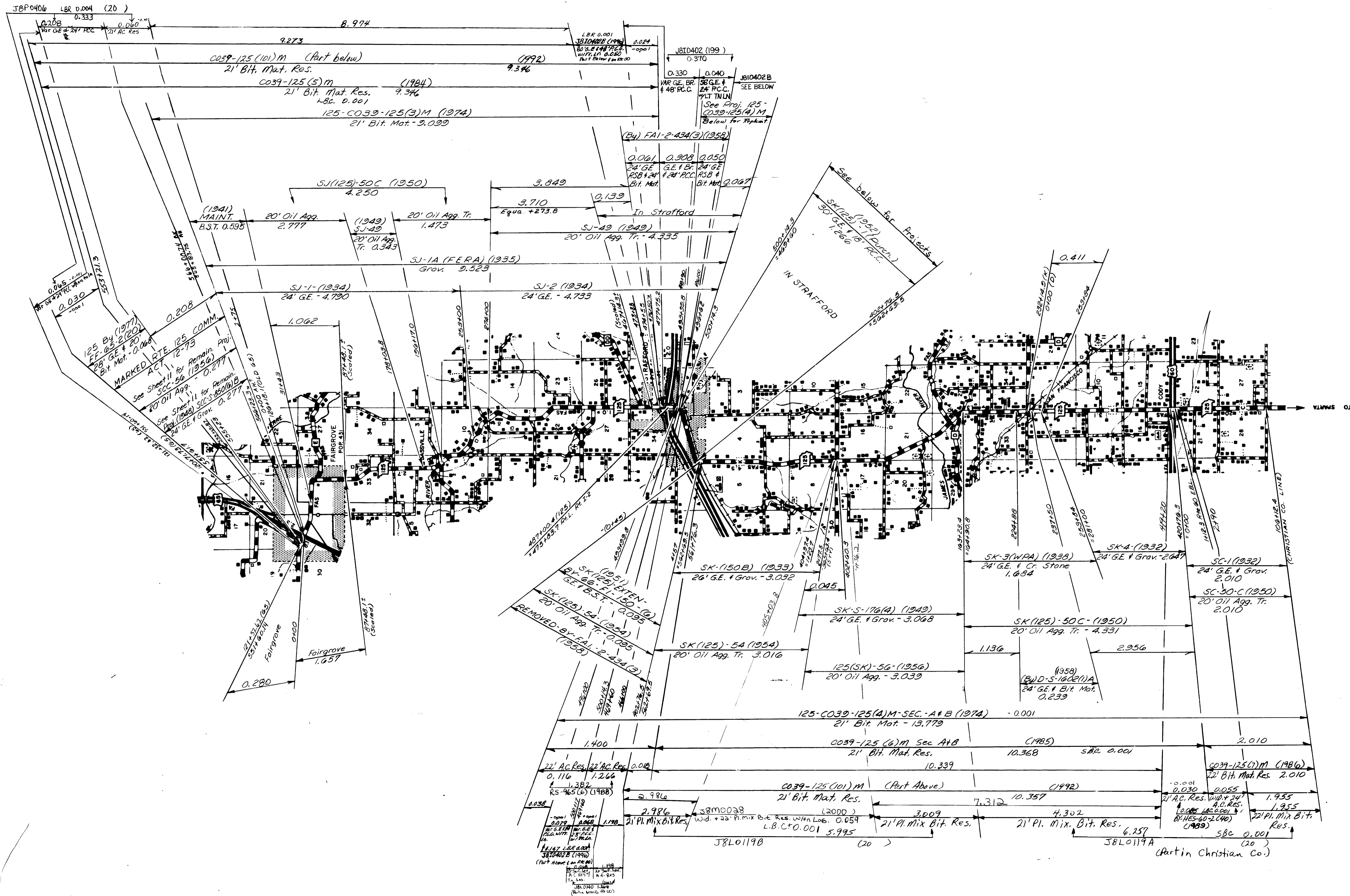
STT-57 (1957)  
 20' O'11 Agg. - 2.074  
 STT-S-727(1) (1952)  
 22' 24' GE + Gron. 2.074  
 STT-1(T) (1956)  
 Gron. - 2.000  
 STT-62 (1962)  
 20' O'11 Agg. Tr. 5.079  
 STT-S-727(2) (1956)  
 24' GE + Gron. 5.079

SAC-1(T) (1955)  
 Gron. 2.838  
 SAC-S-1336(1) (1955)  
 24' GE + Gron. 2.838  
 SAC-S-56 (1956)  
 O'11 Agg. Tr. 2.838  
 Co39-AD(1)M  
 20' Bit. Mat. Res. (1986)  
 2.838

SH-48 (1948)  
 20' O'11 Agg. Tr. 7.073  
 Co39-H(1)M (1974)  
 21' Bit. Mat. 7.073  
 Co39-H(2)M Sec. A18 (1984)  
 21' Bit. Mat. Res. 7.073  
 (Part in Polk Co.) (1992)  
 Co39-H(1)M  
 21' Bit. Mat. Res. 6.061  
 6.061  
 40' GE + 24' AC  
 7.050  
 7.050  
 5.88  
 0.104  
 0.824  
 (Part in Polk Co.)  
 5.88  
 0.104  
 0.824

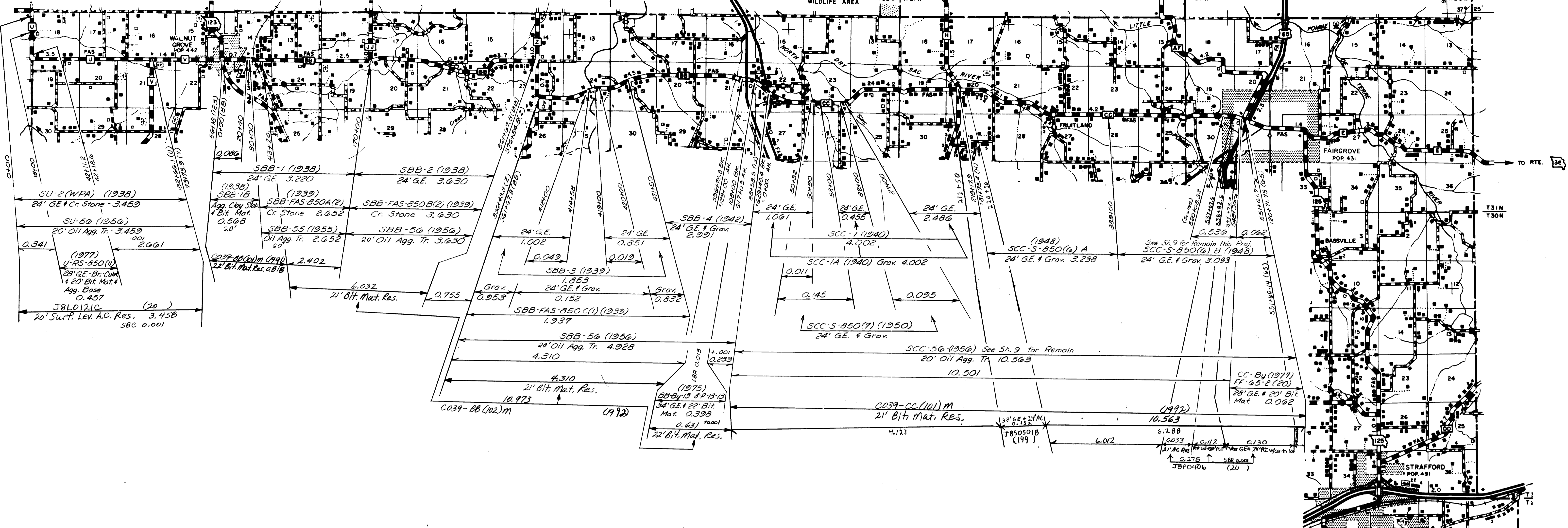
SH-6 (1932)  
 24' GE + 3.593  
 SH-64 (1933)  
 GRAY - 3.593  
 MAINT. (1941)  
 EST. - O. 411  
 SH-48 (1948)  
 20' O'11 Agg. Tr. 7.073  
 Co39-H(1)M (1974)  
 21' Bit. Mat. 7.073  
 Co39-H(2)M Sec. A18 (1984)  
 21' Bit. Mat. Res. 7.073  
 (Part in Polk Co.) (1992)  
 Co39-H(1)M  
 21' Bit. Mat. Res. 6.061  
 6.061  
 40' GE + 24' AC  
 7.050  
 7.050  
 5.88  
 0.104  
 0.824  
 (Part in Polk Co.)  
 5.88  
 0.104  
 0.824



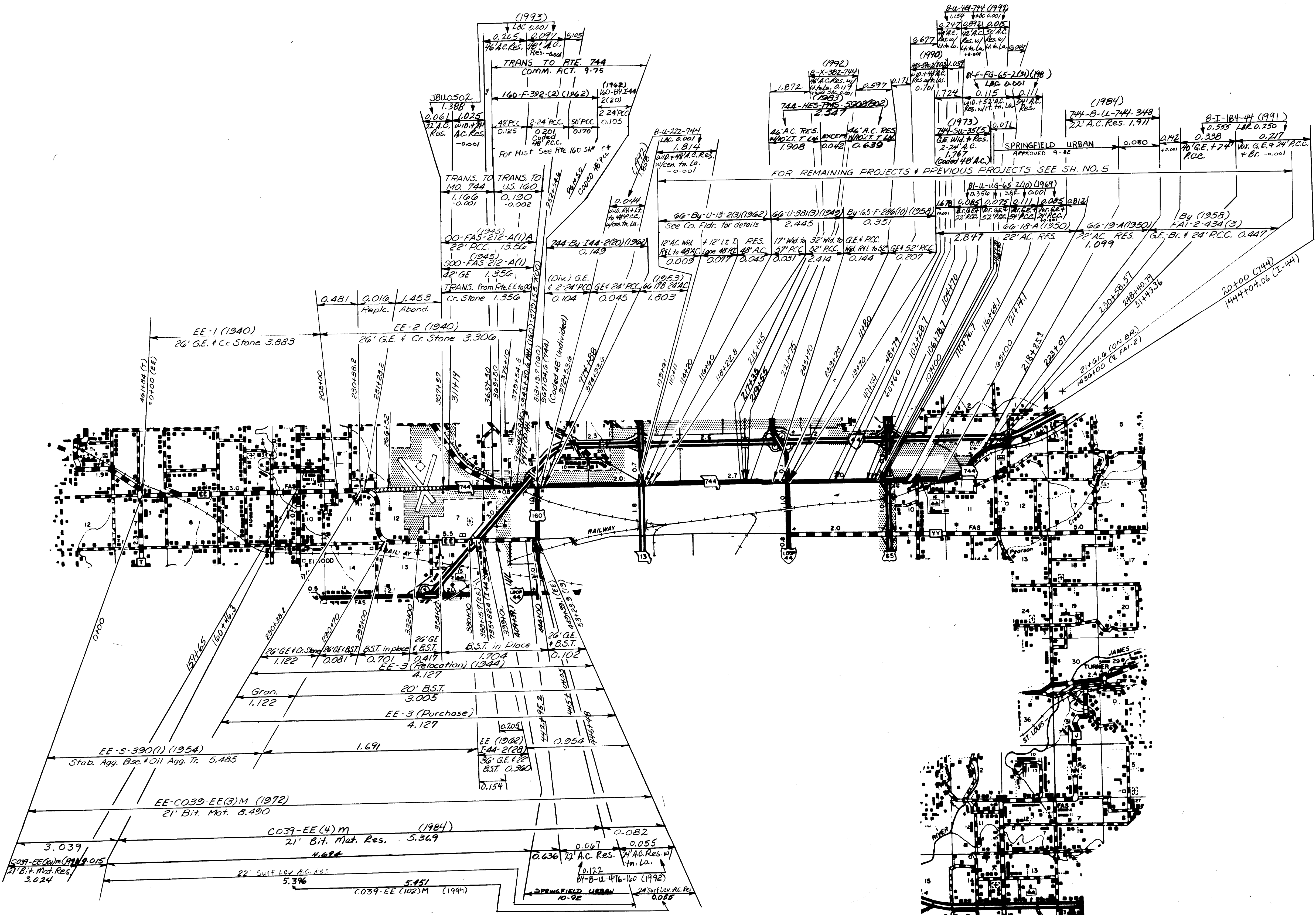


© 039  
**GREENE COUNTY**  
 ROUTES  
 125 (C-J-K)  
 SHEET 9 OF 18

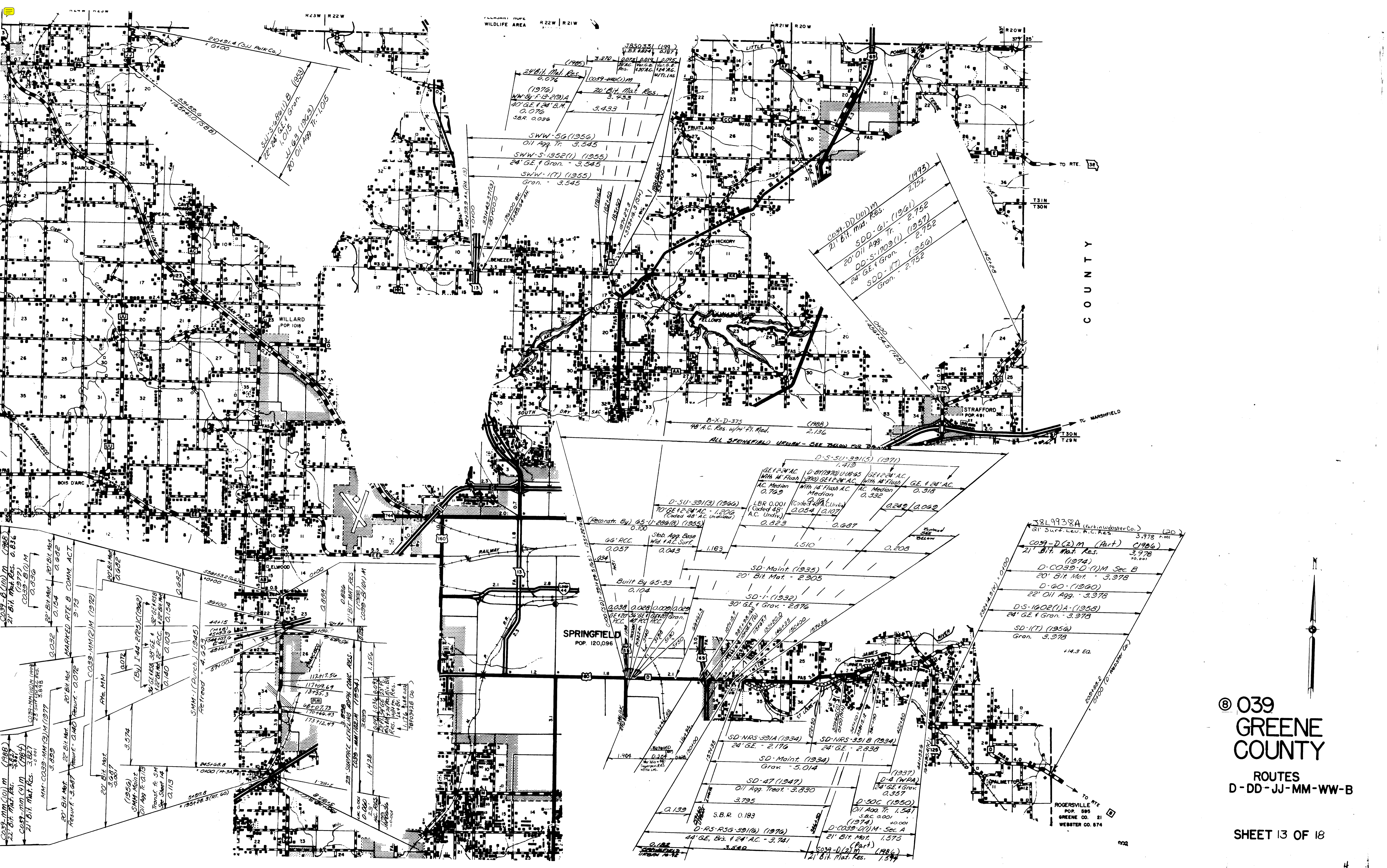




© 039  
**GREENE COUNTY**  
 ROUTES  
 174-U-BB-CC-YY  
 SHEET 11 OF 18

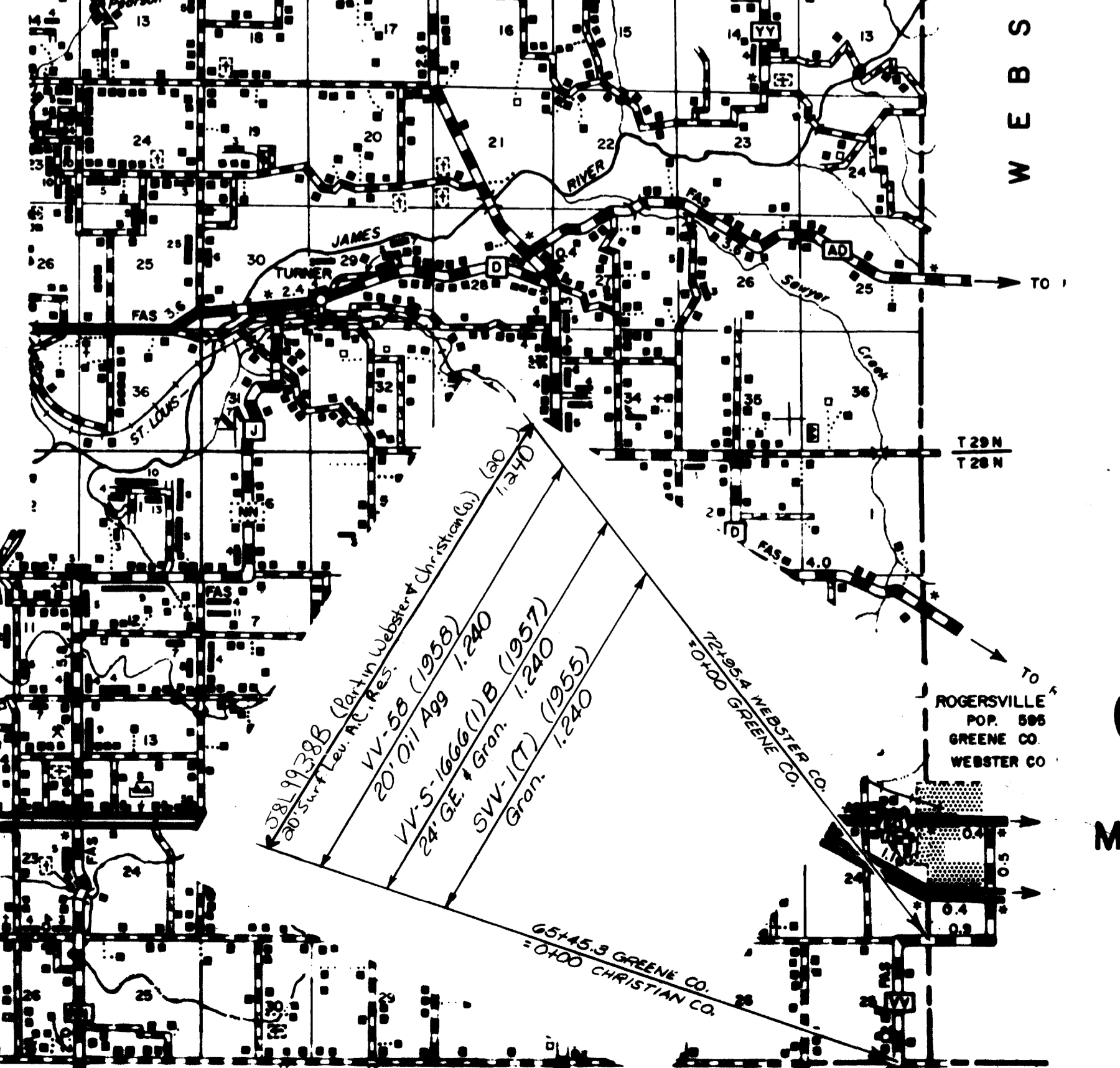
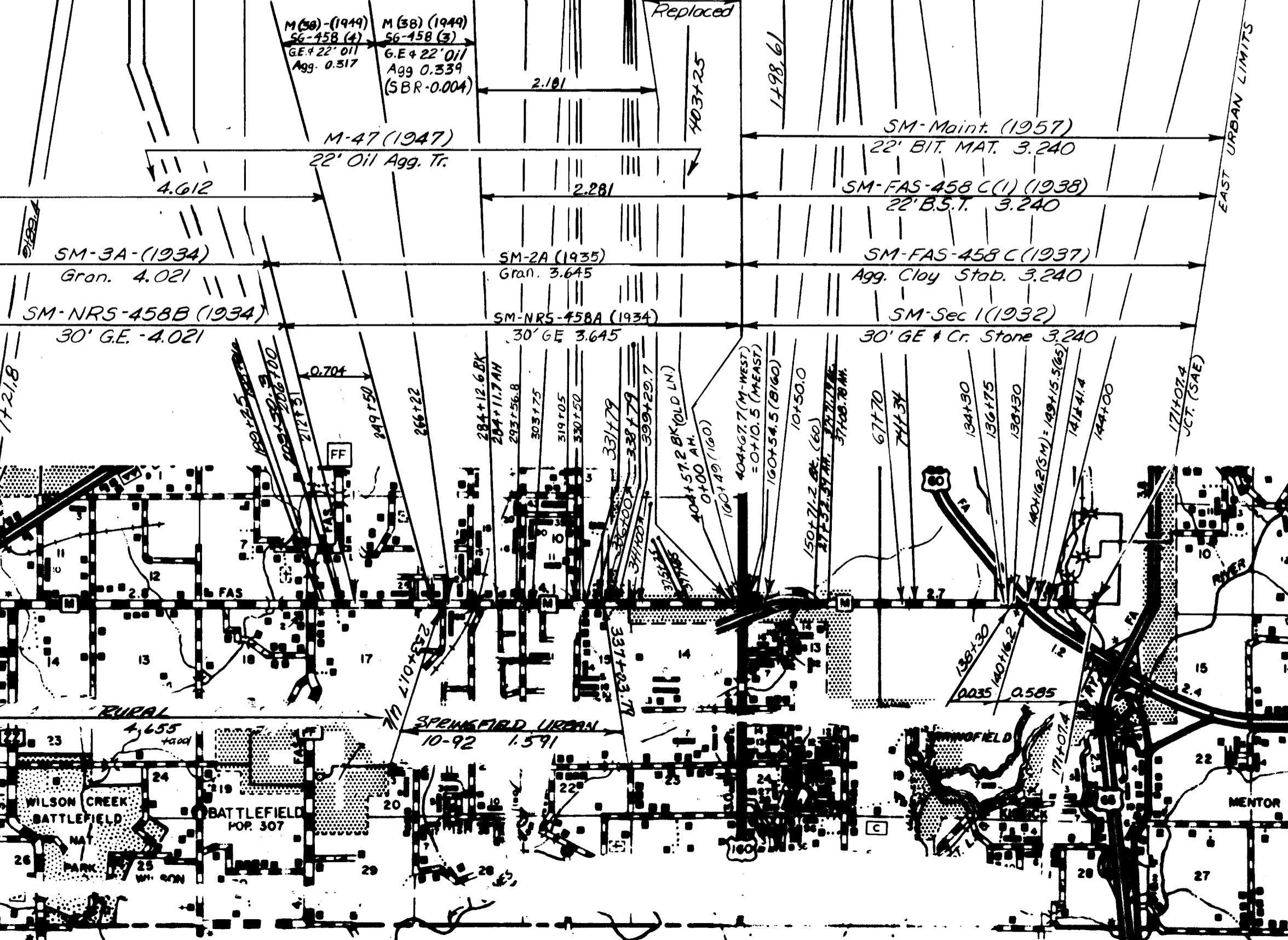
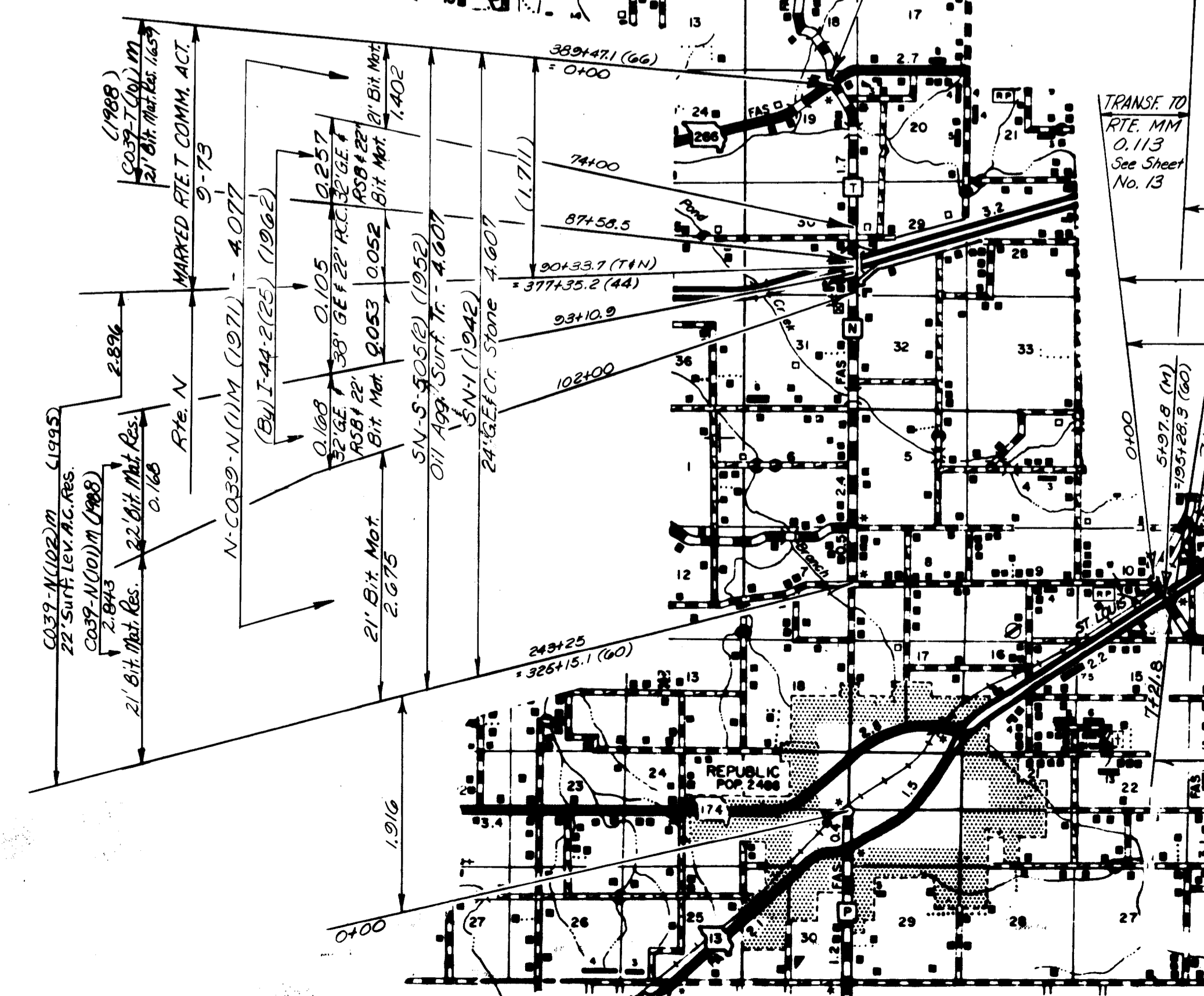
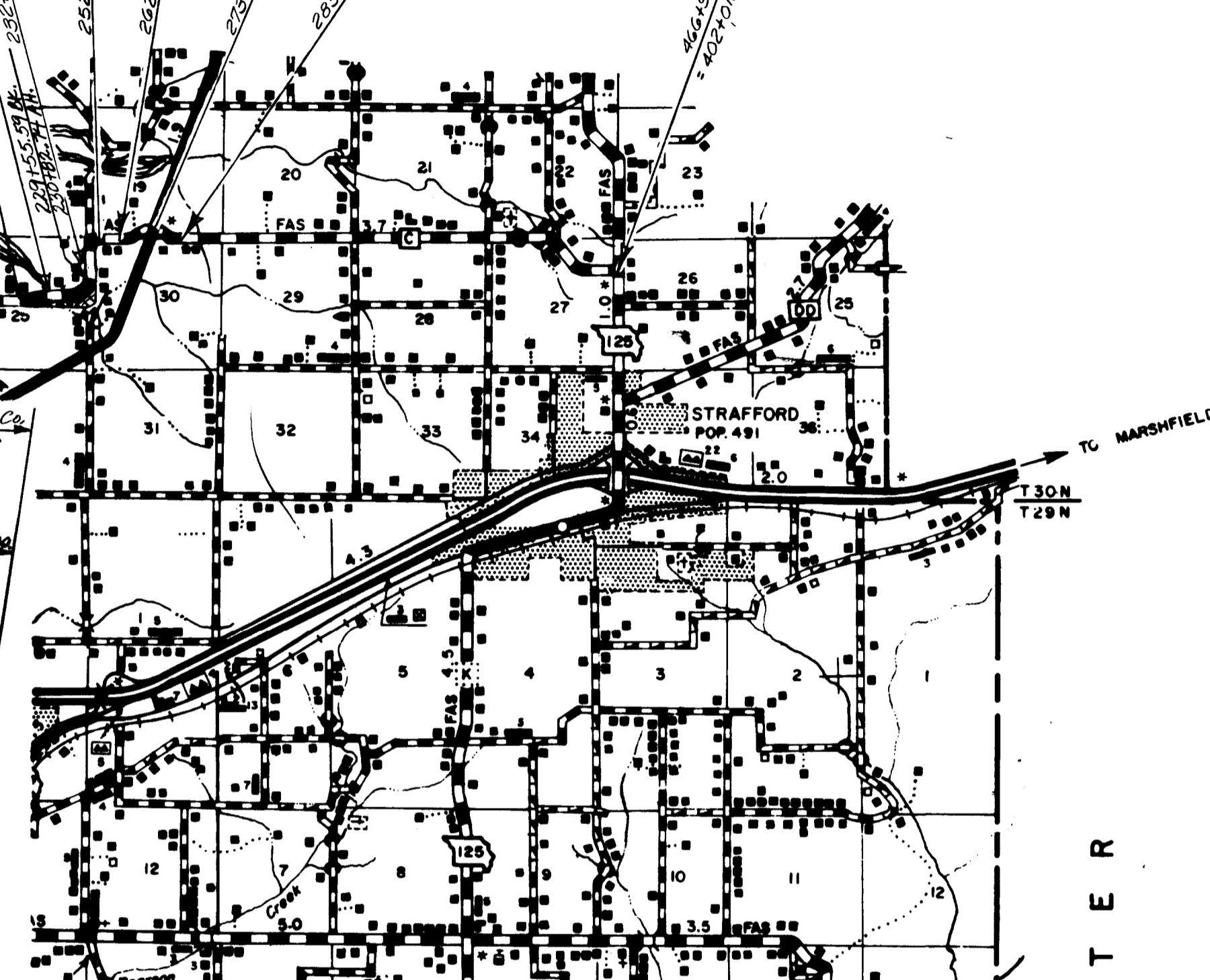
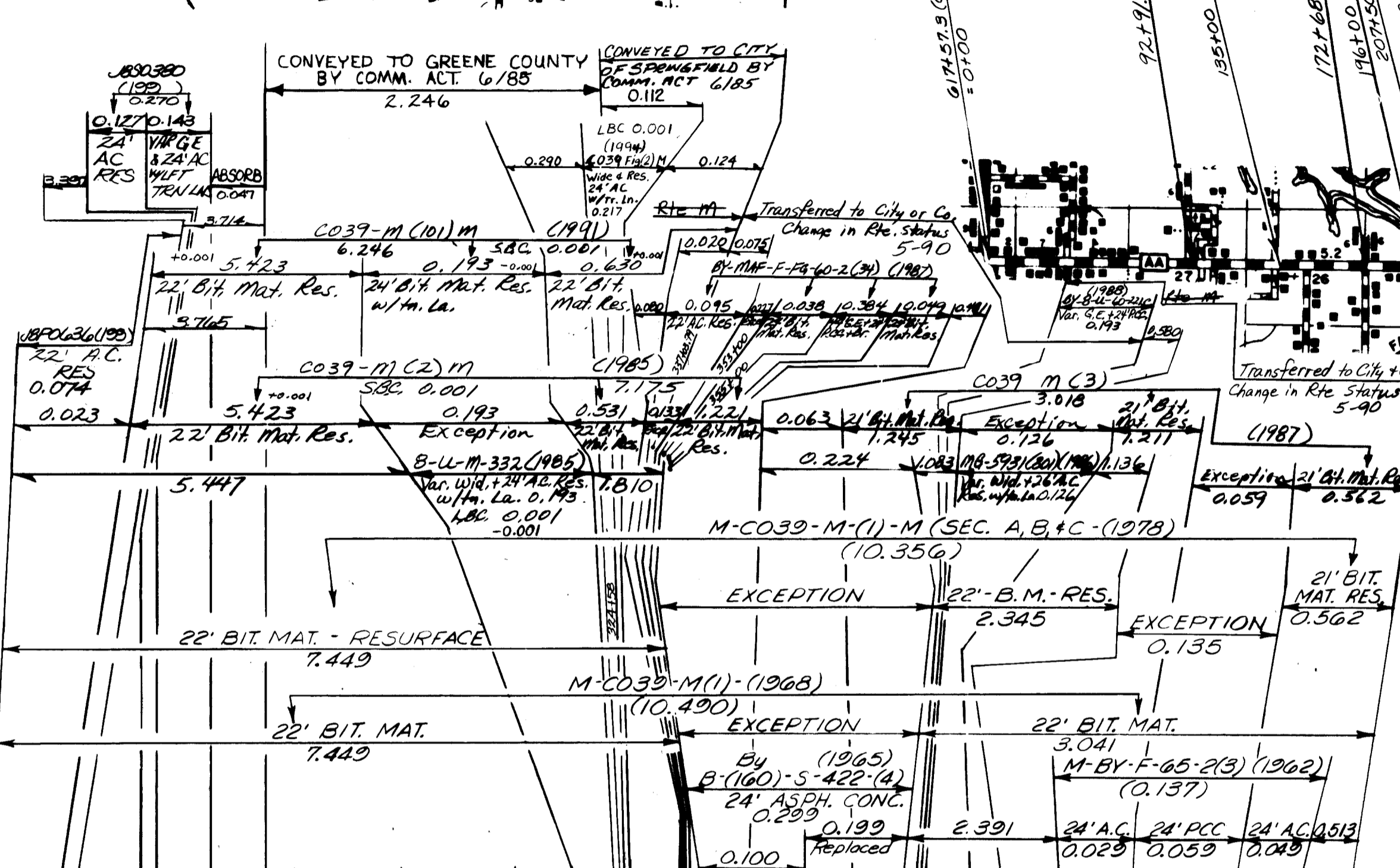
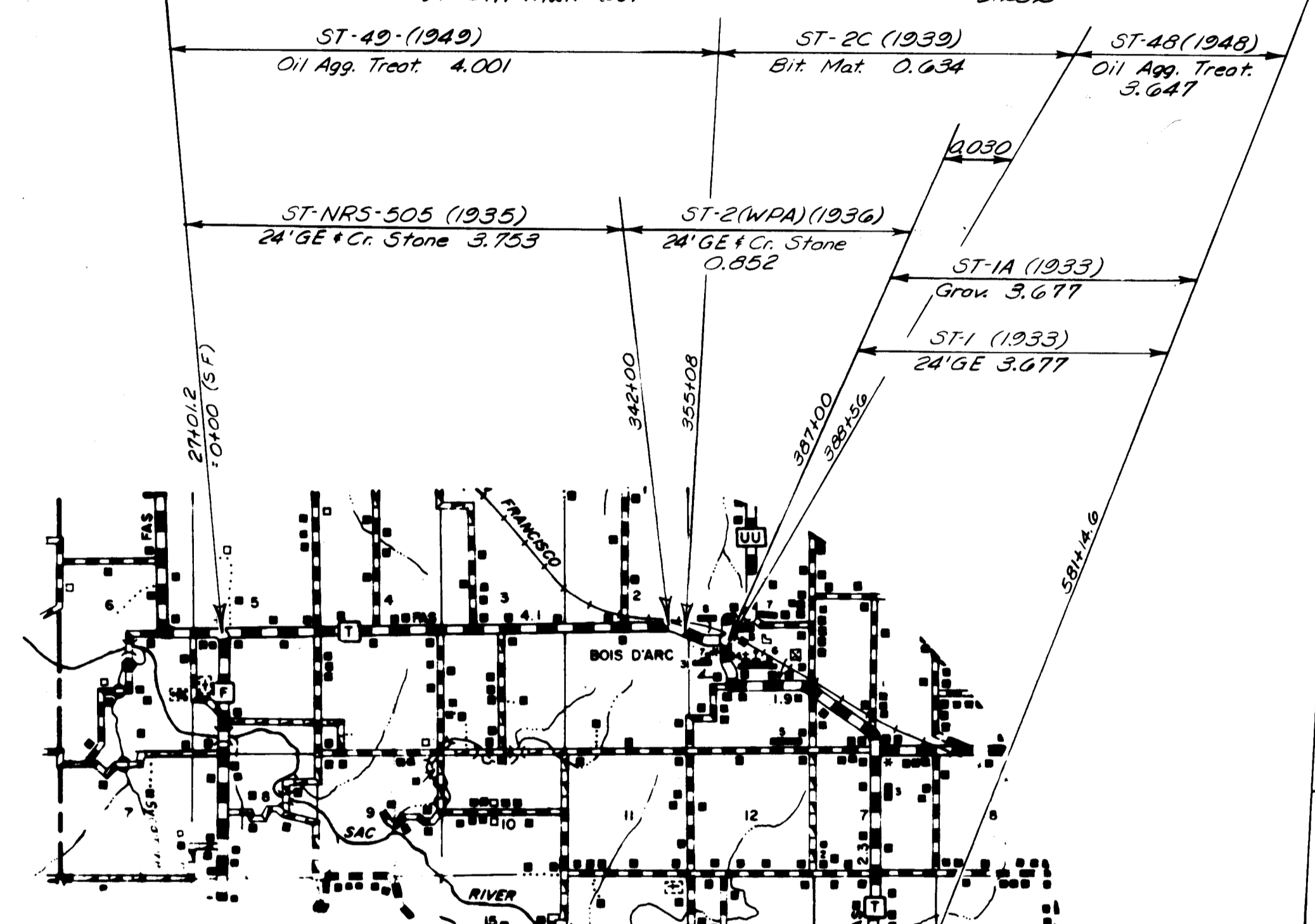
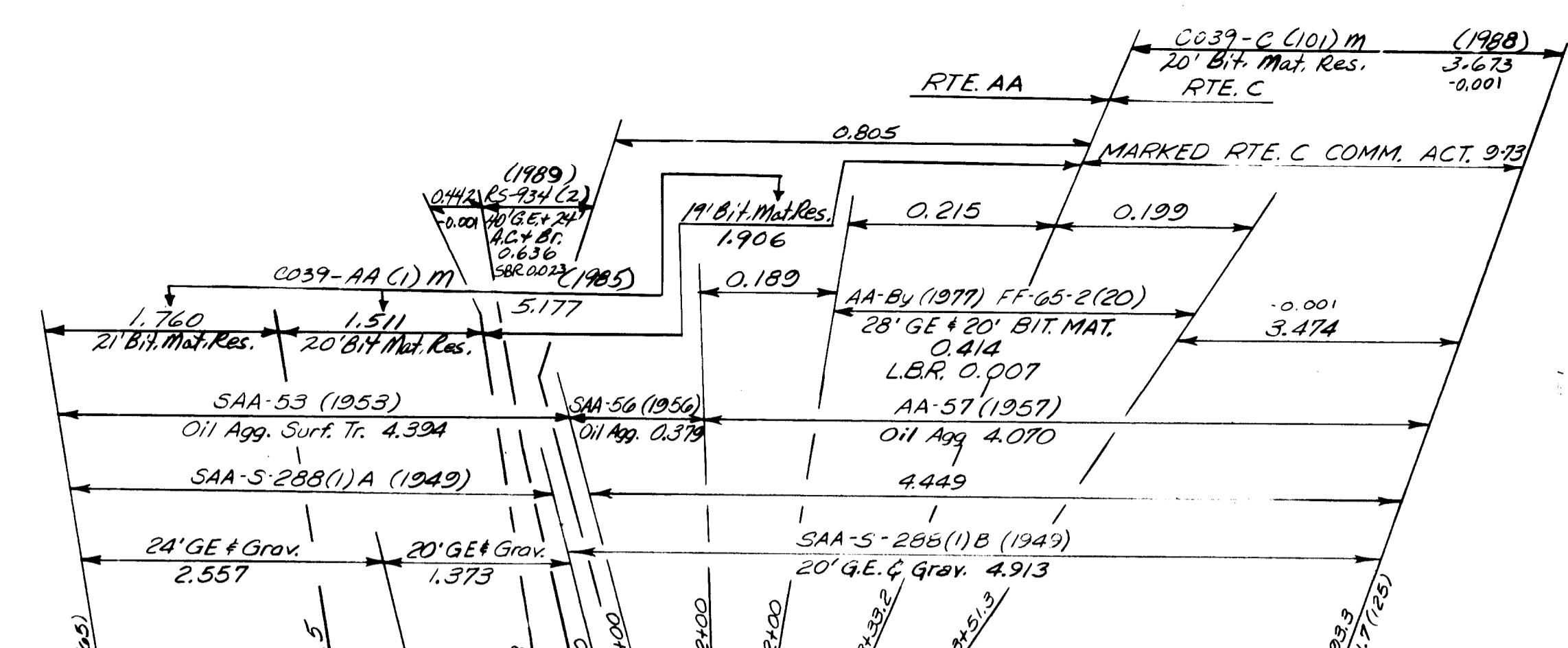
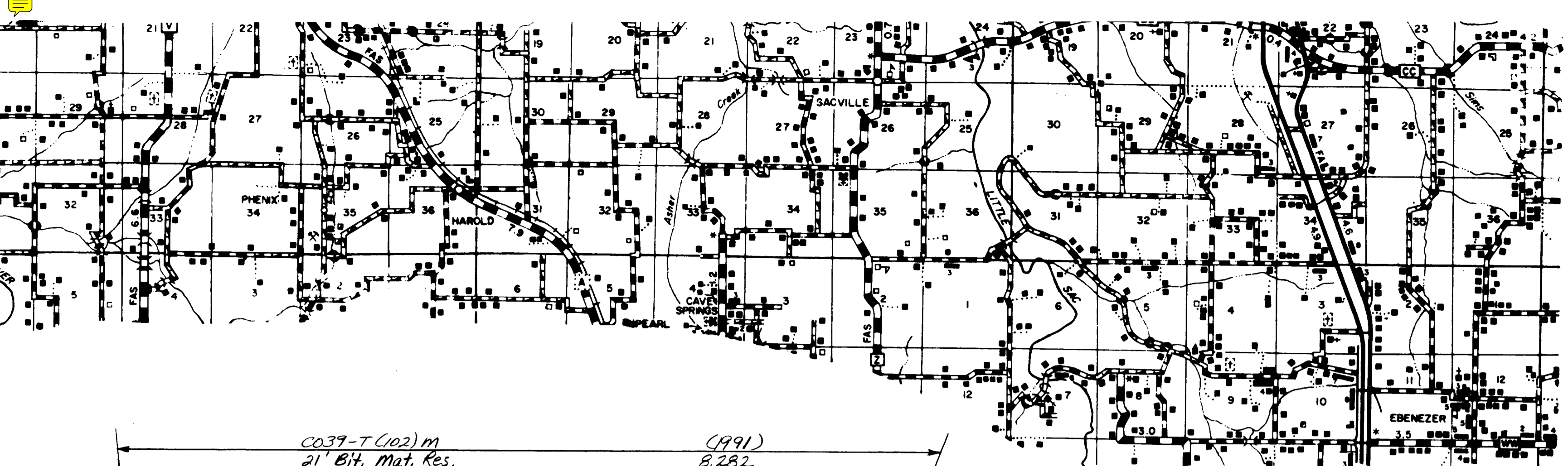


039  
 GREENE  
 COUNTY  
 ROUTES  
 744 - EE  
 SHEET 12 OF 18

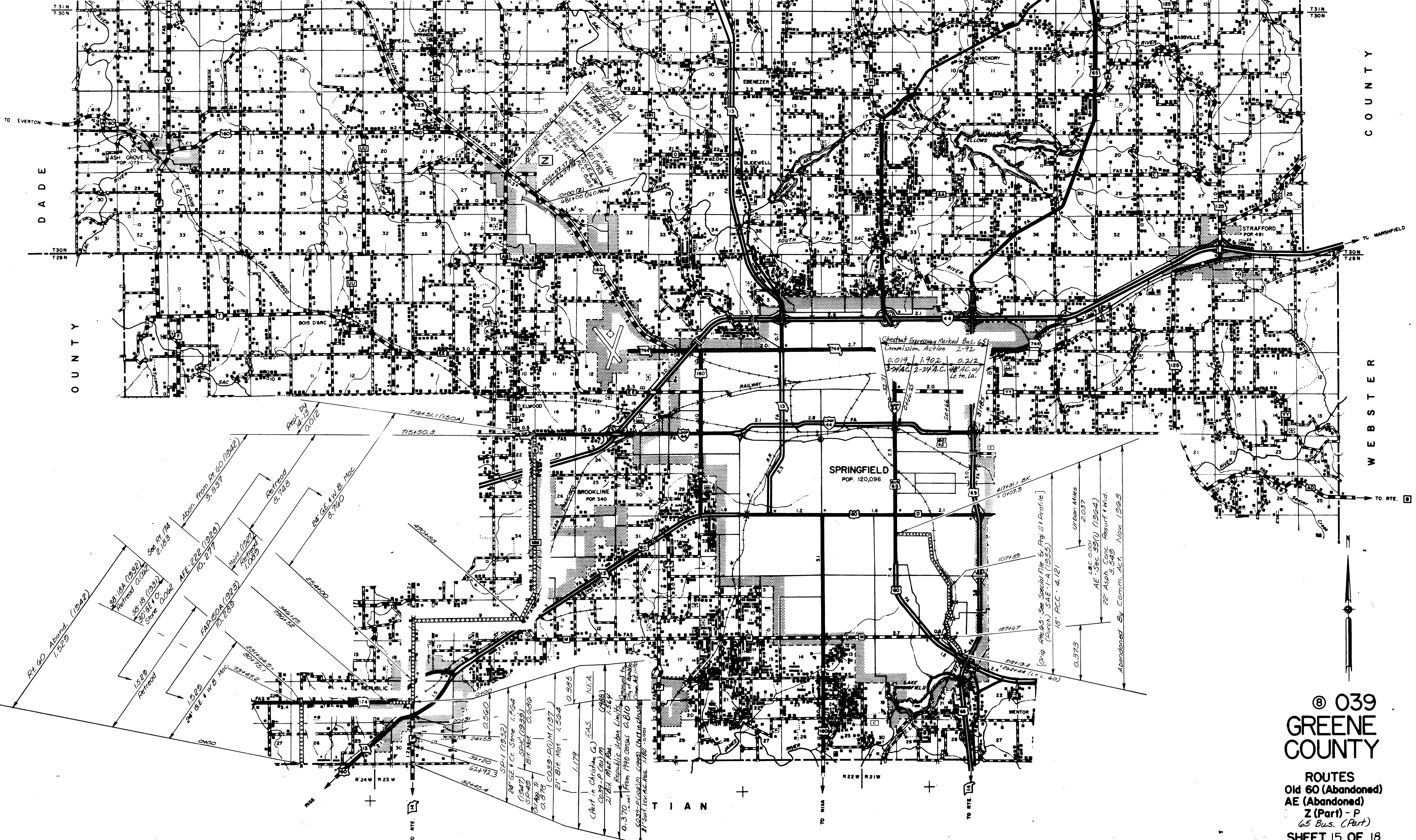


GREENE COUNTY

© 039  
**GREENE COUNTY**  
 ROUTES  
 D-DD-JJ-MM-WW-B  
 SHEET 13 OF 18

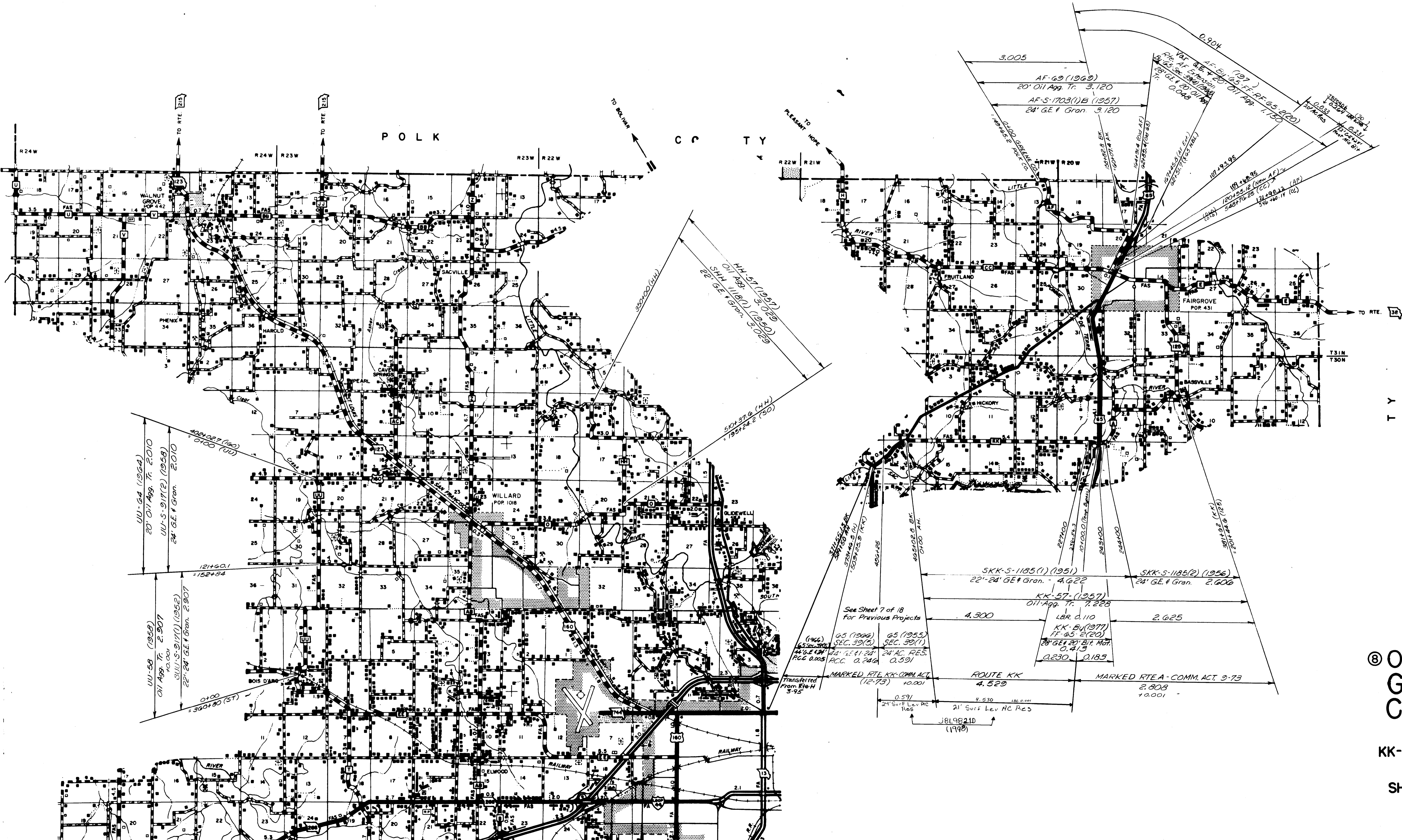


© 039  
 GREENE  
 COUNTY  
 ROUTES  
 M-C-AA-N-VV-T  
 SHEET 14 OF 18



© 039  
**GREENE  
 COUNTY**

**ROUTES**  
 Old 60 (Abandoned)  
 AE (Abandoned)  
 Z (Part) - P  
 65 Bus. (Part)  
**SHEET 15 OF 18**



© 039  
**GREENE COUNTY**  
 ROUTES  
 KK-HH-A-UU-AF  
 SHEET 16 OF 18





