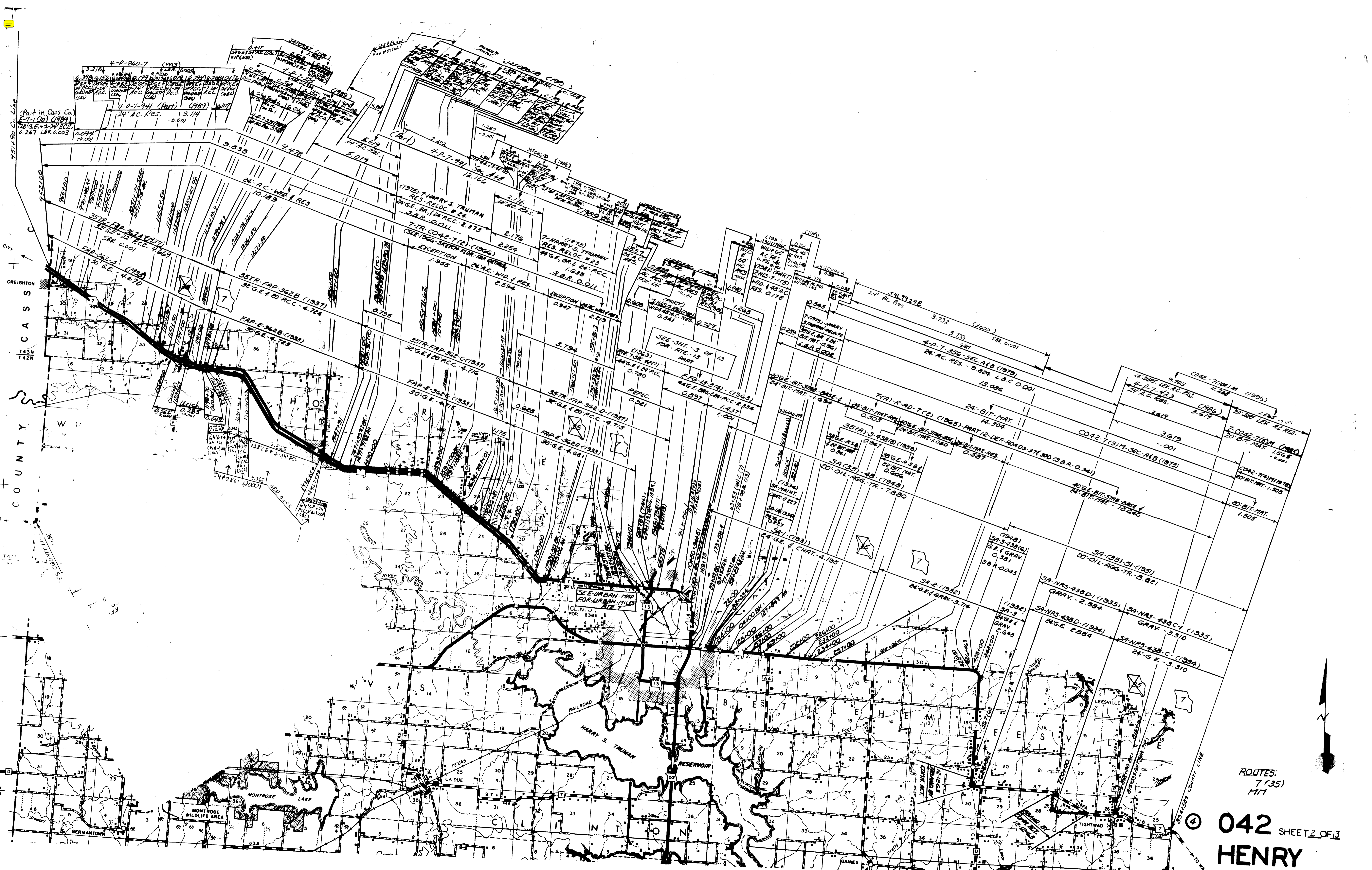


ROUTE  
2  
K  
K Spur

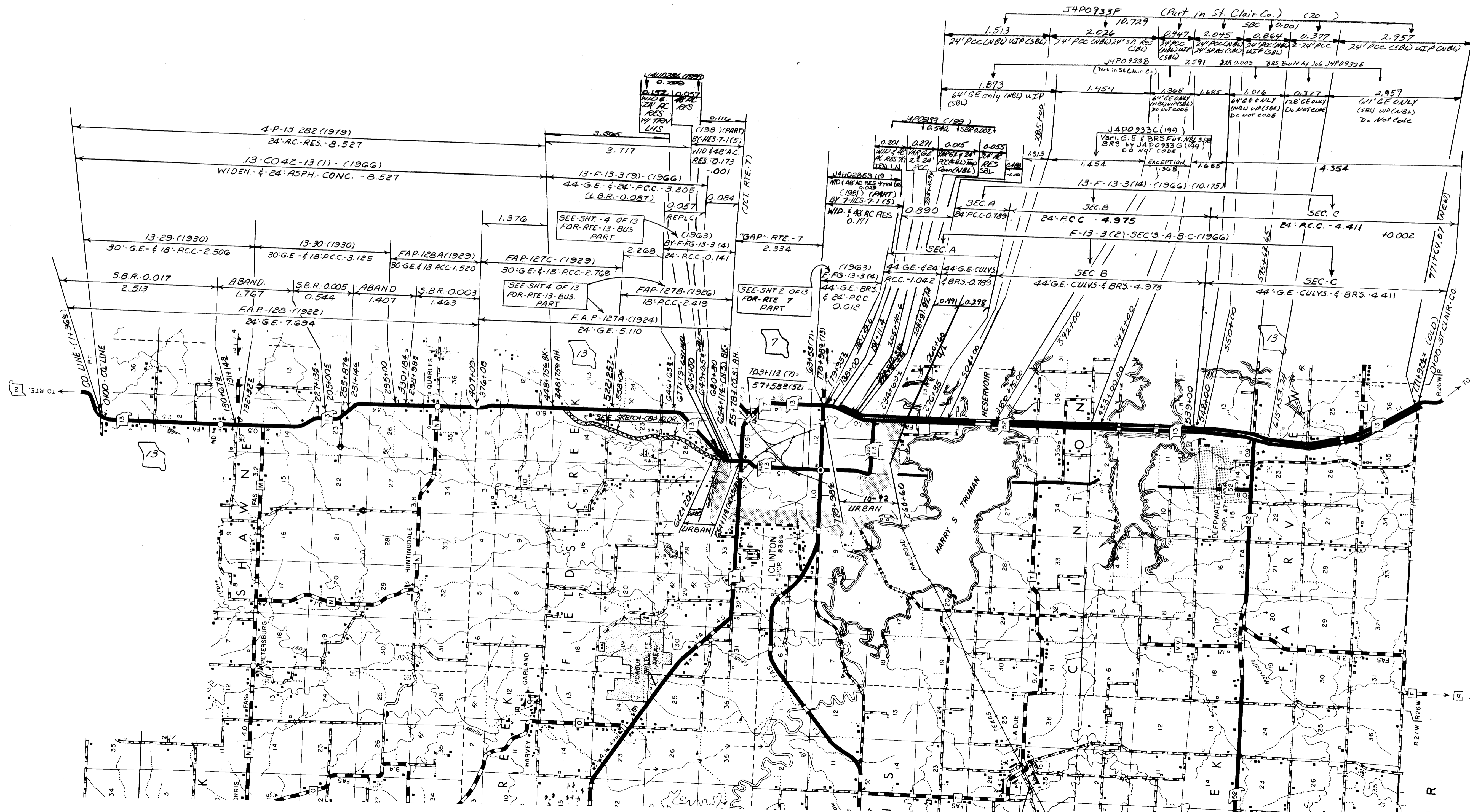
042  
HENRY



CASS COUNTY

ROUTES:  
7 (35)  
M17

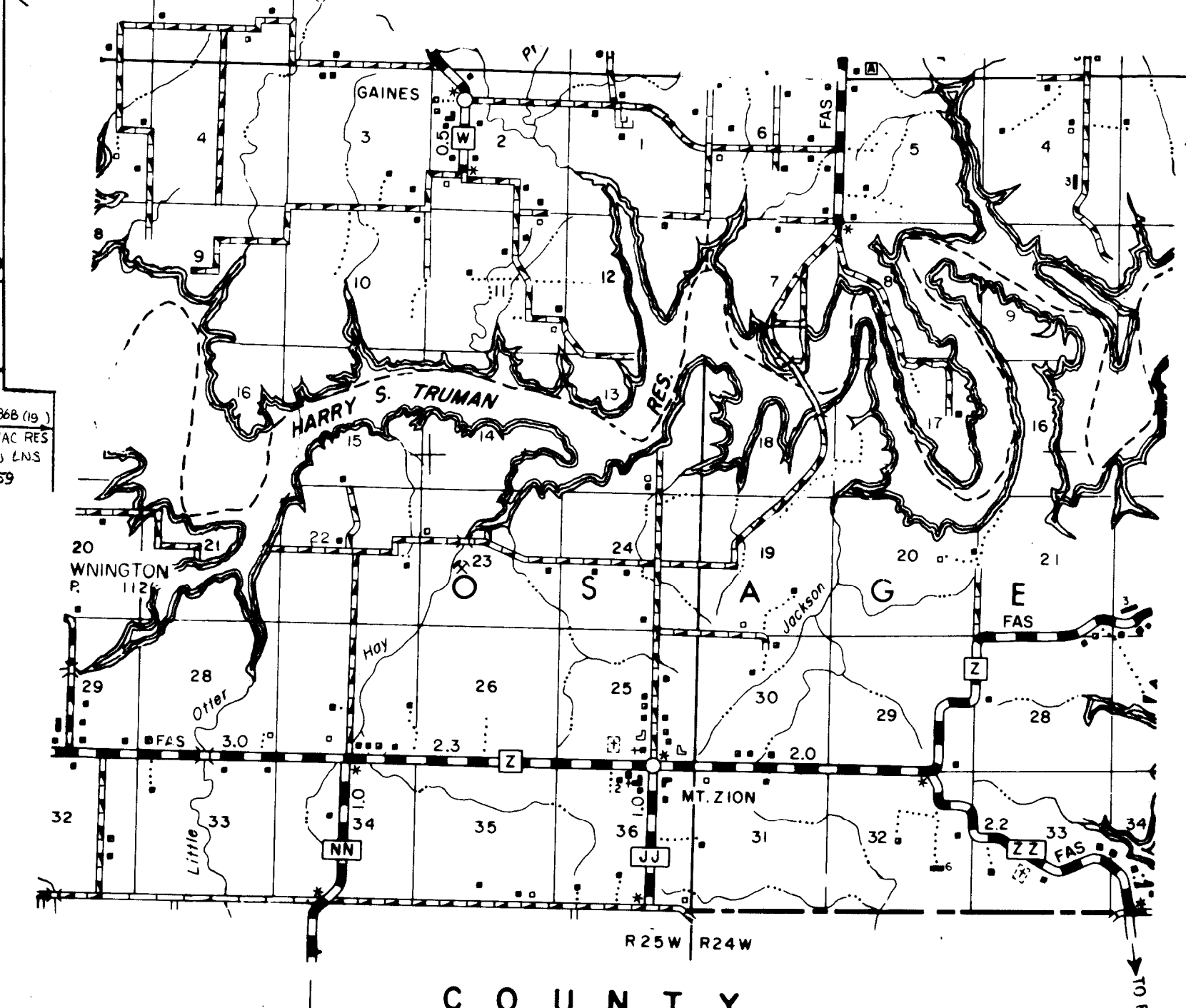
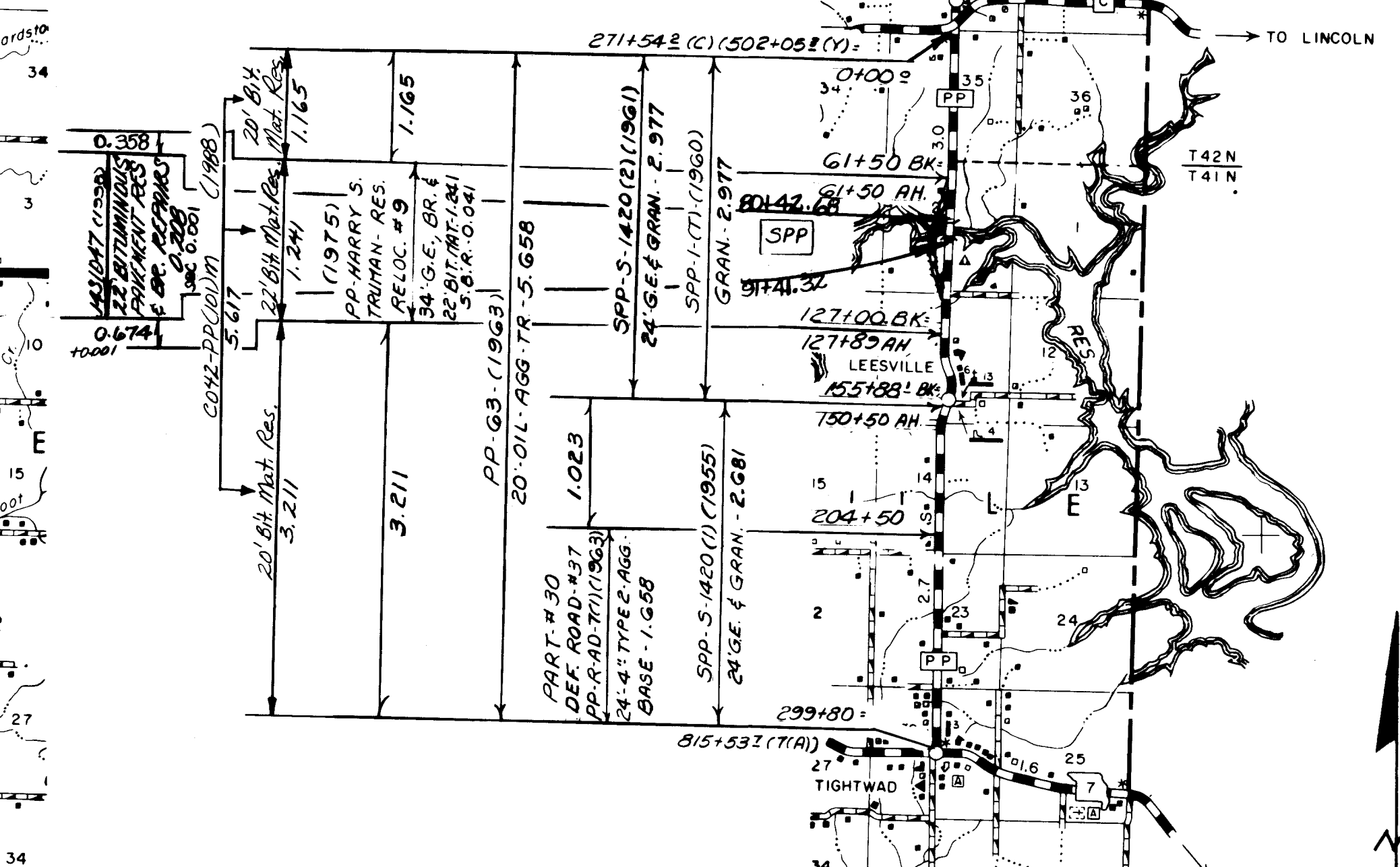
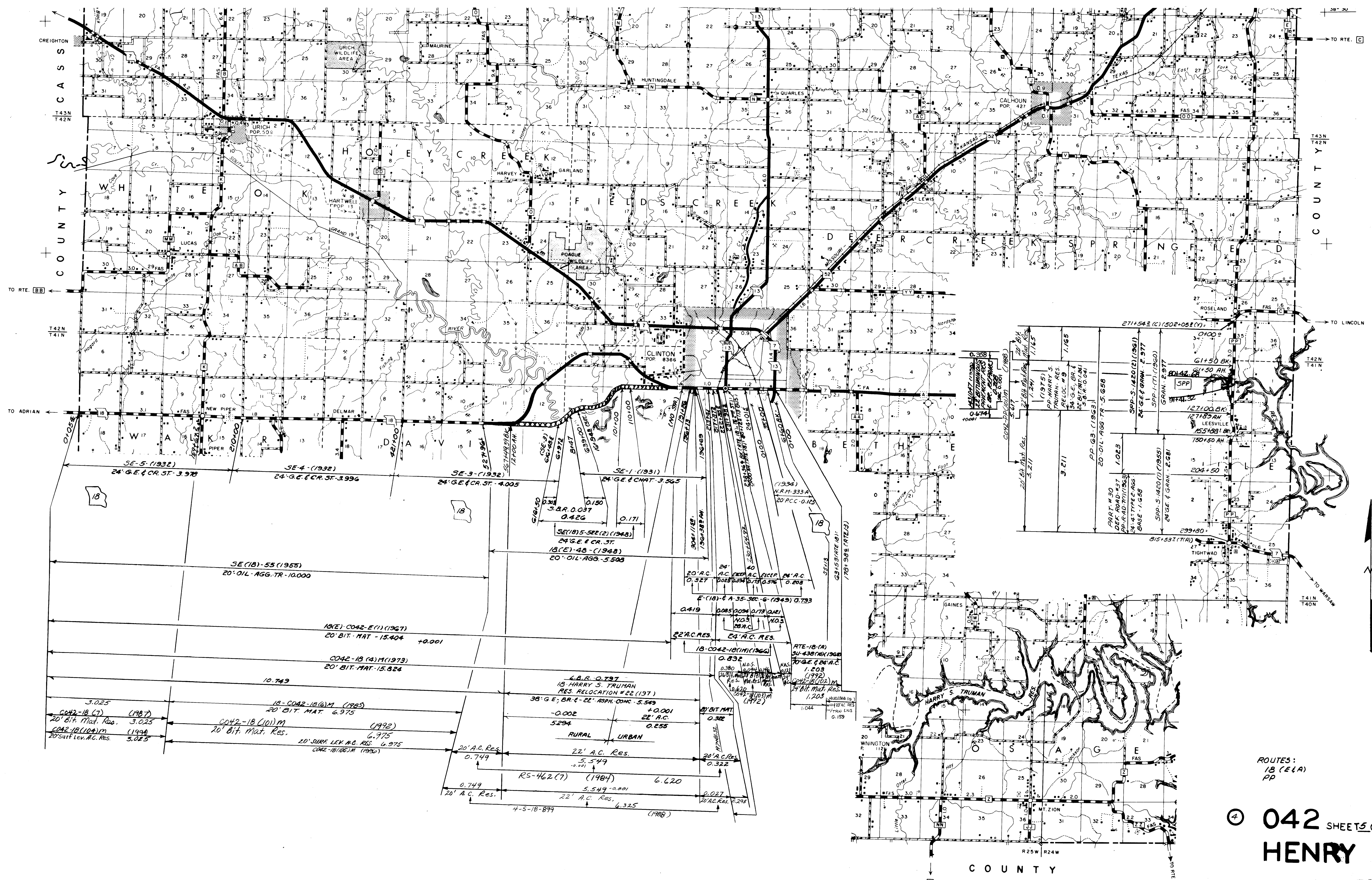
042 SHEET 2 OF 13  
HENRY



ROUTES  
13

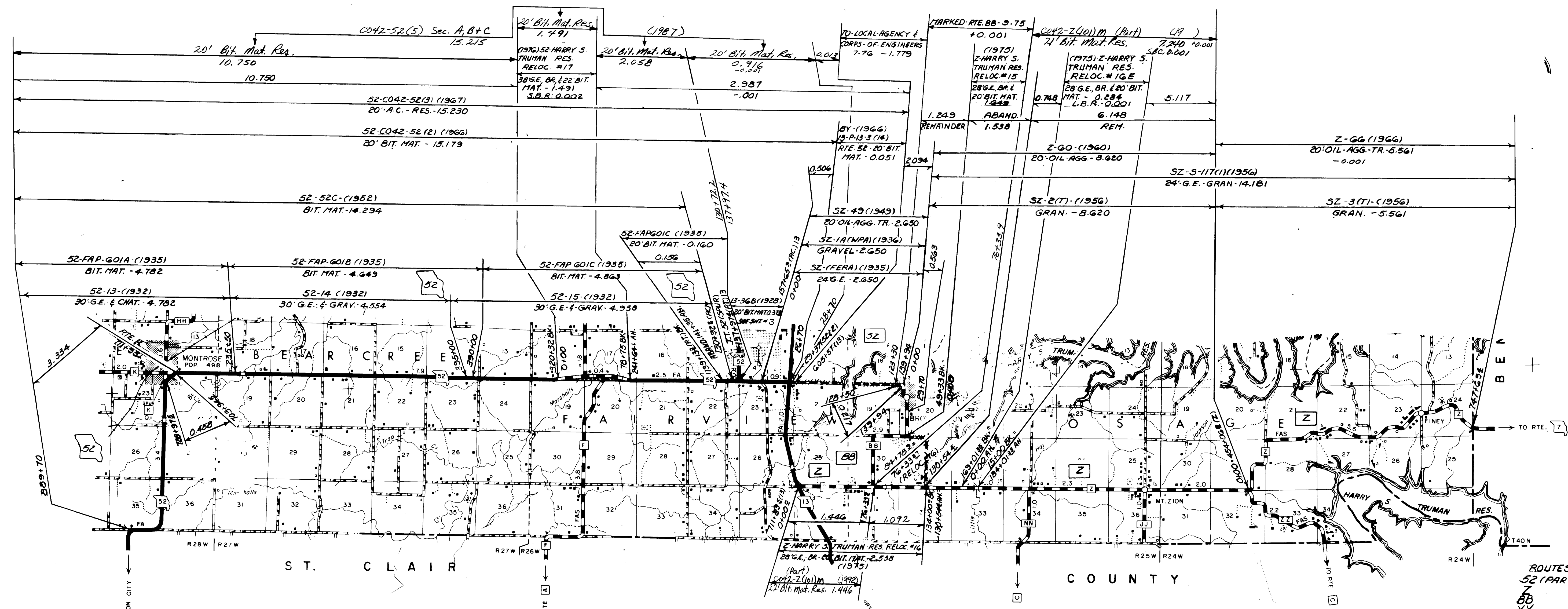
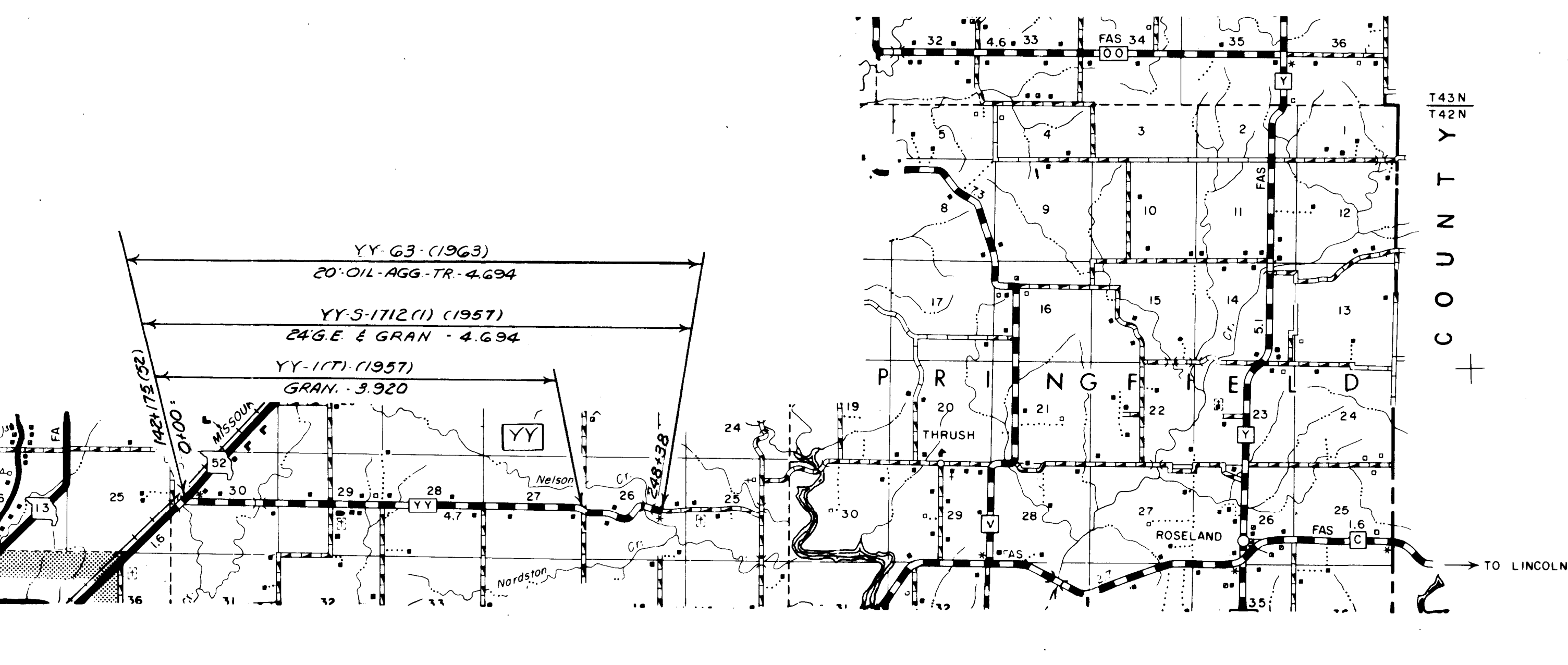
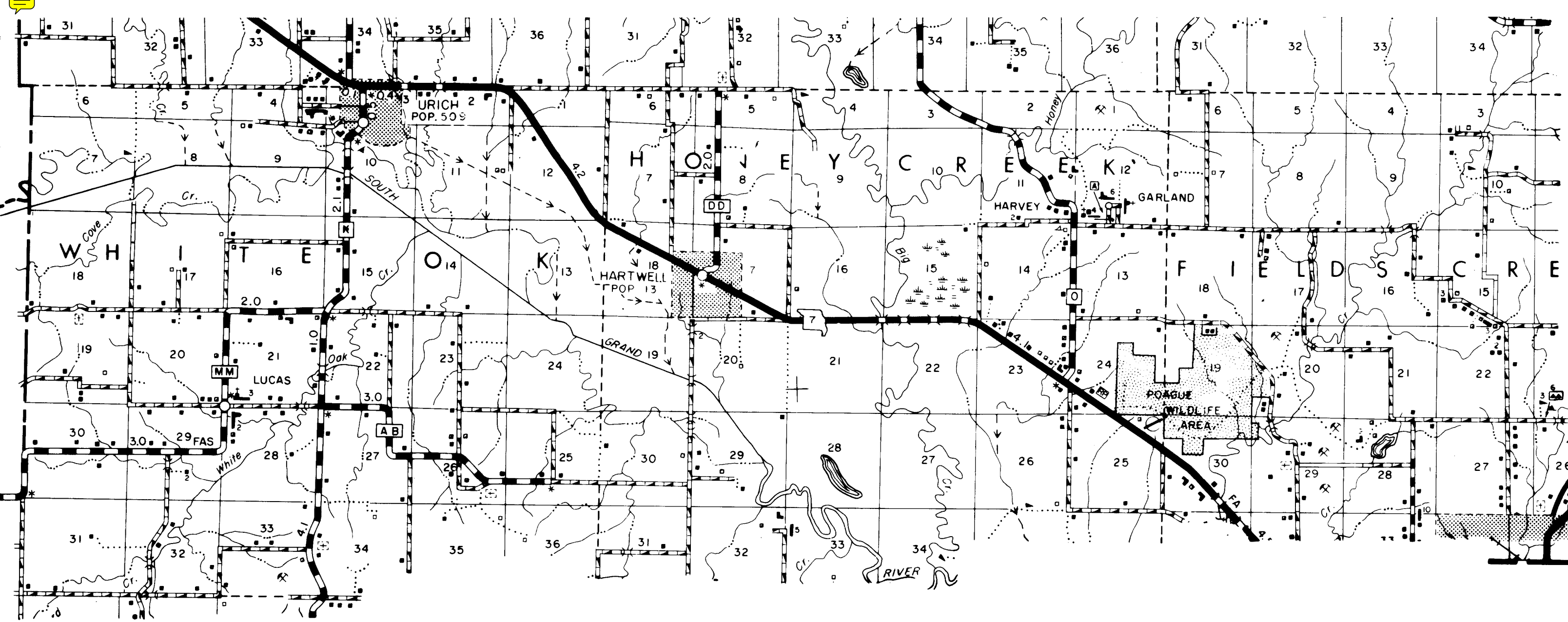
④ 042  
HENRY  
SHEET- 3 OF 13





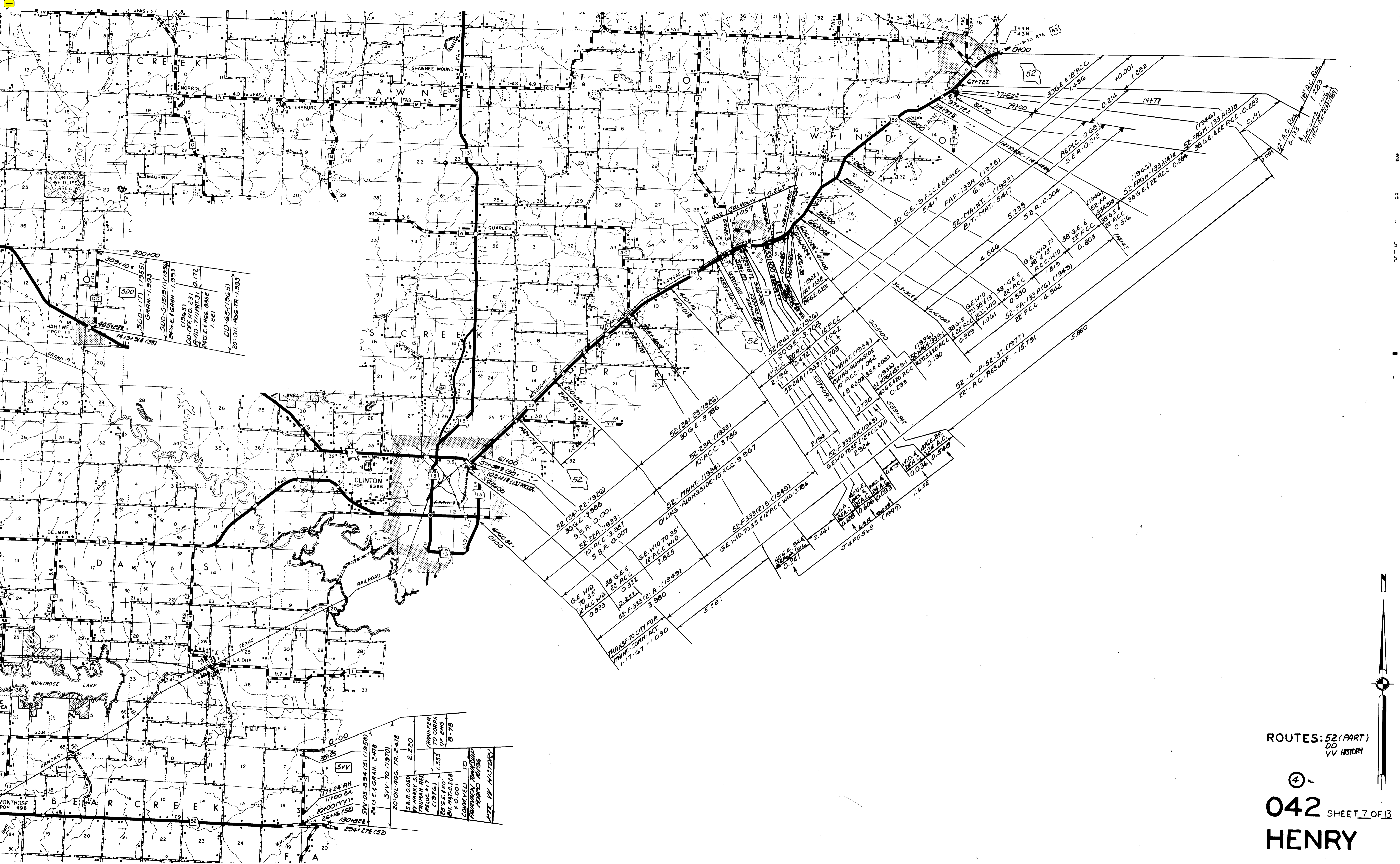
ROUTES:  
18 (E & A)  
PP

④ 042 SHEETS OF 13  
HENRY



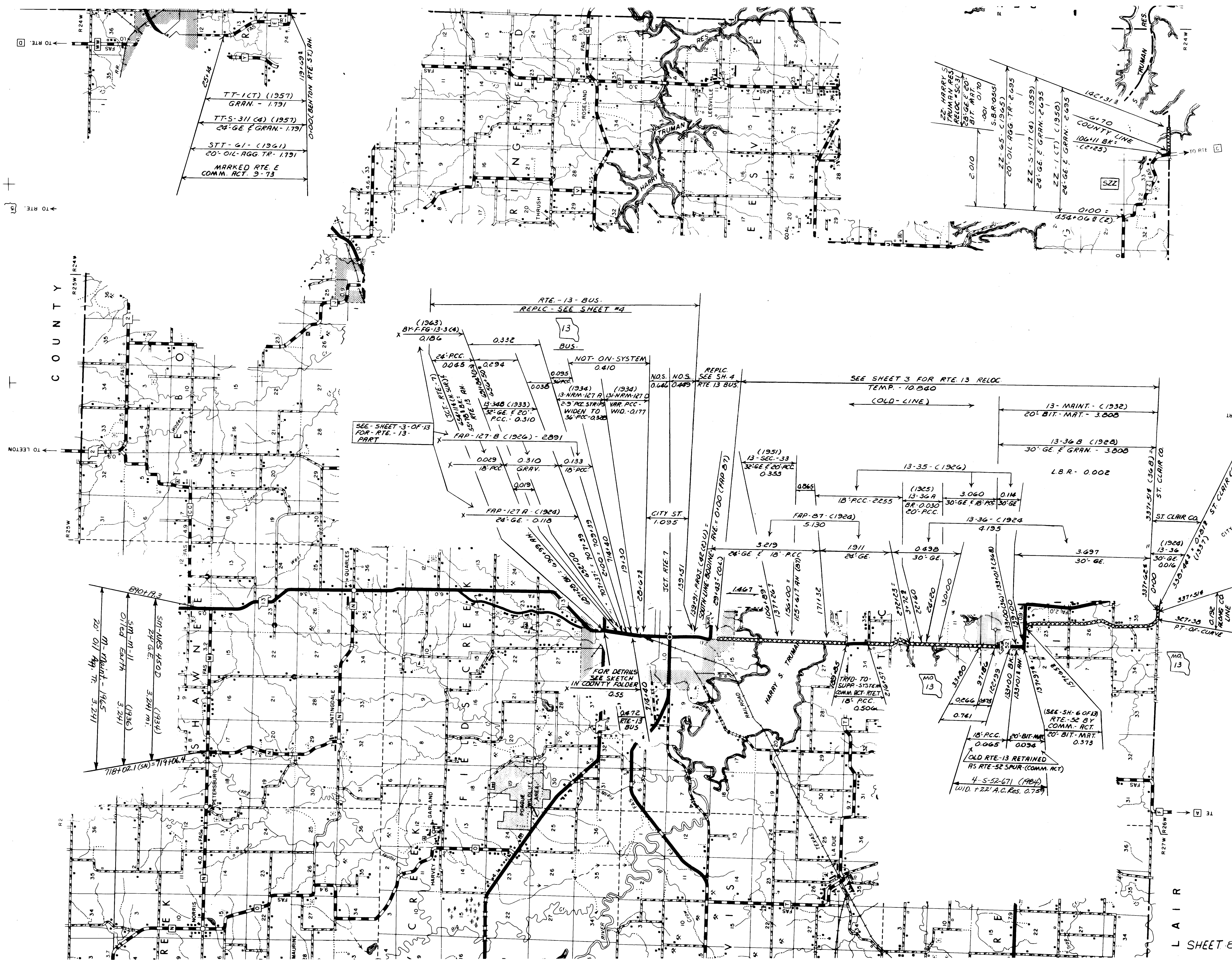
ROUTES:  
 52 (PART)  
 Z  
 BB  
 YY

④ 042 SHEET 6 OF 13  
 HENRY



ROUTES: 52 (PART)  
 DD  
 VV HISTORY

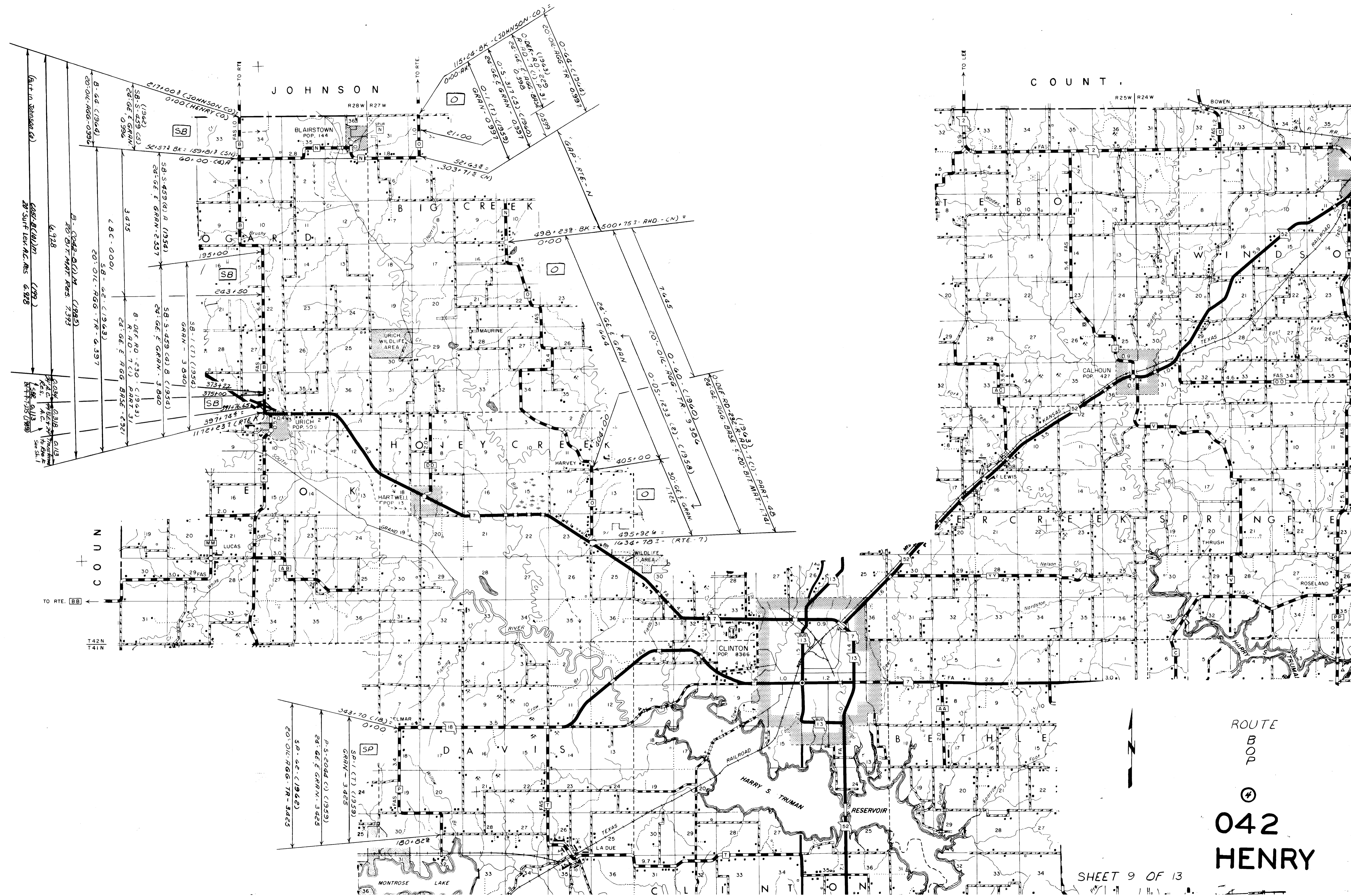
④  
 042 SHEET 7 OF 13  
 HENRY



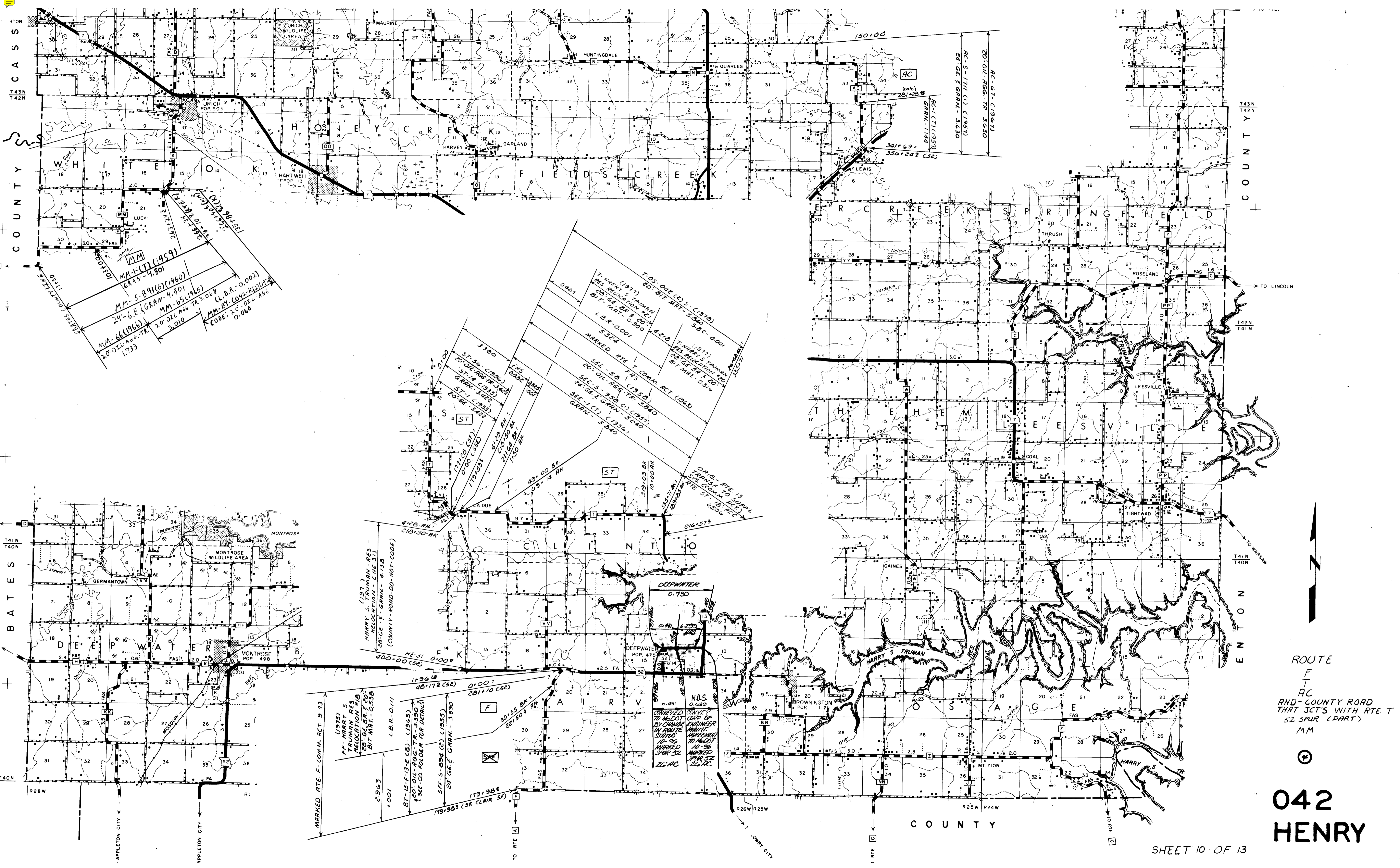
ROUTE  
52 SPUR PART  
Z  
Z  
M

042  
HENRY





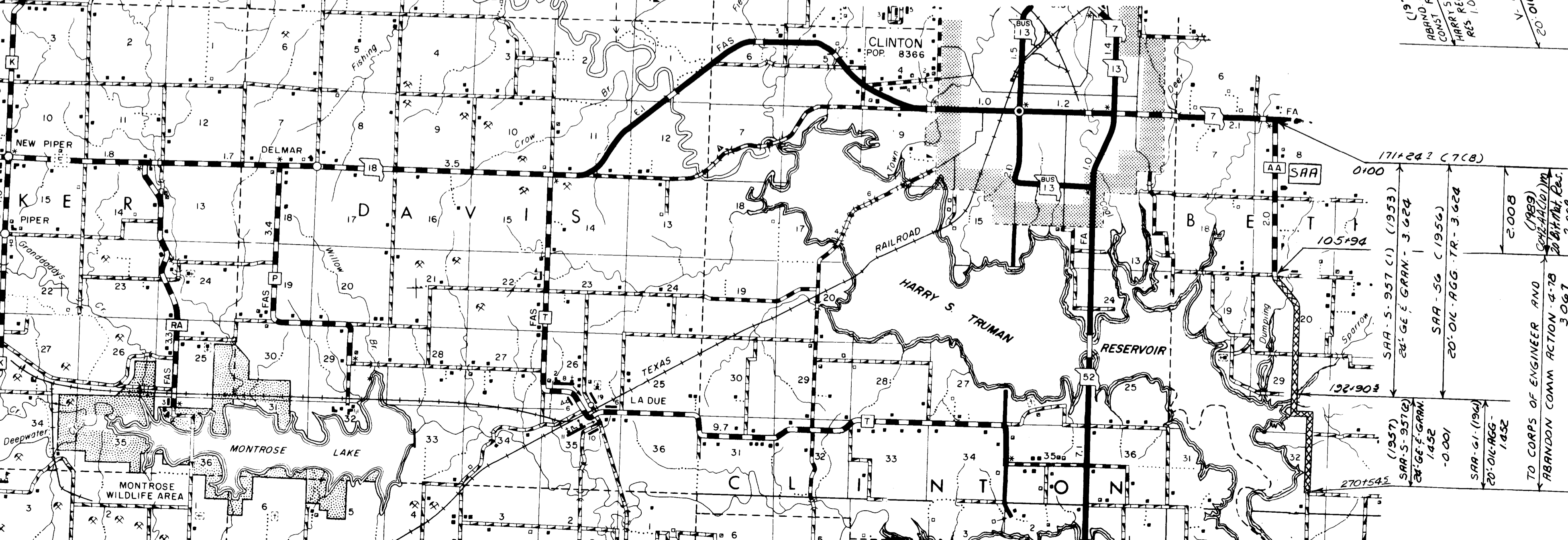
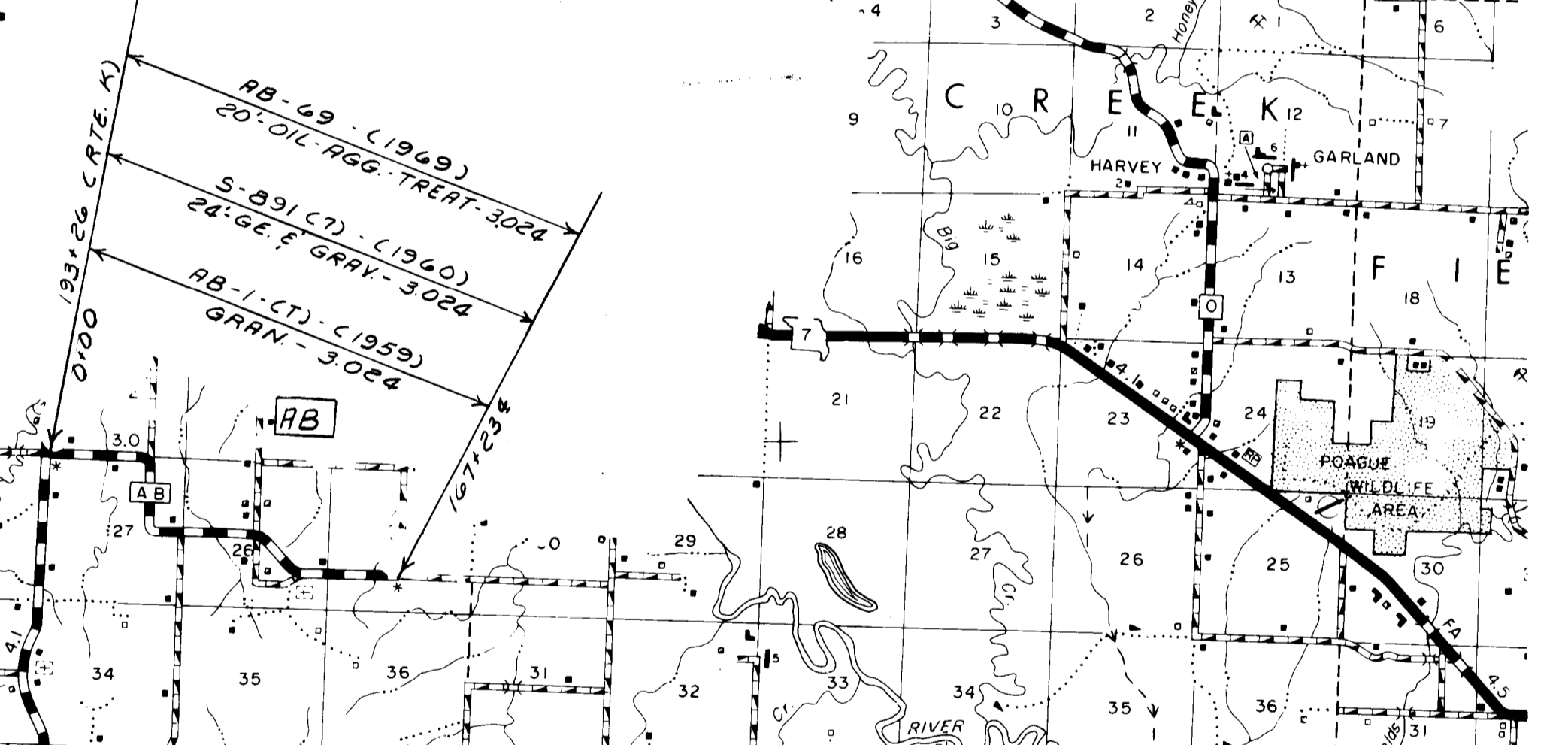
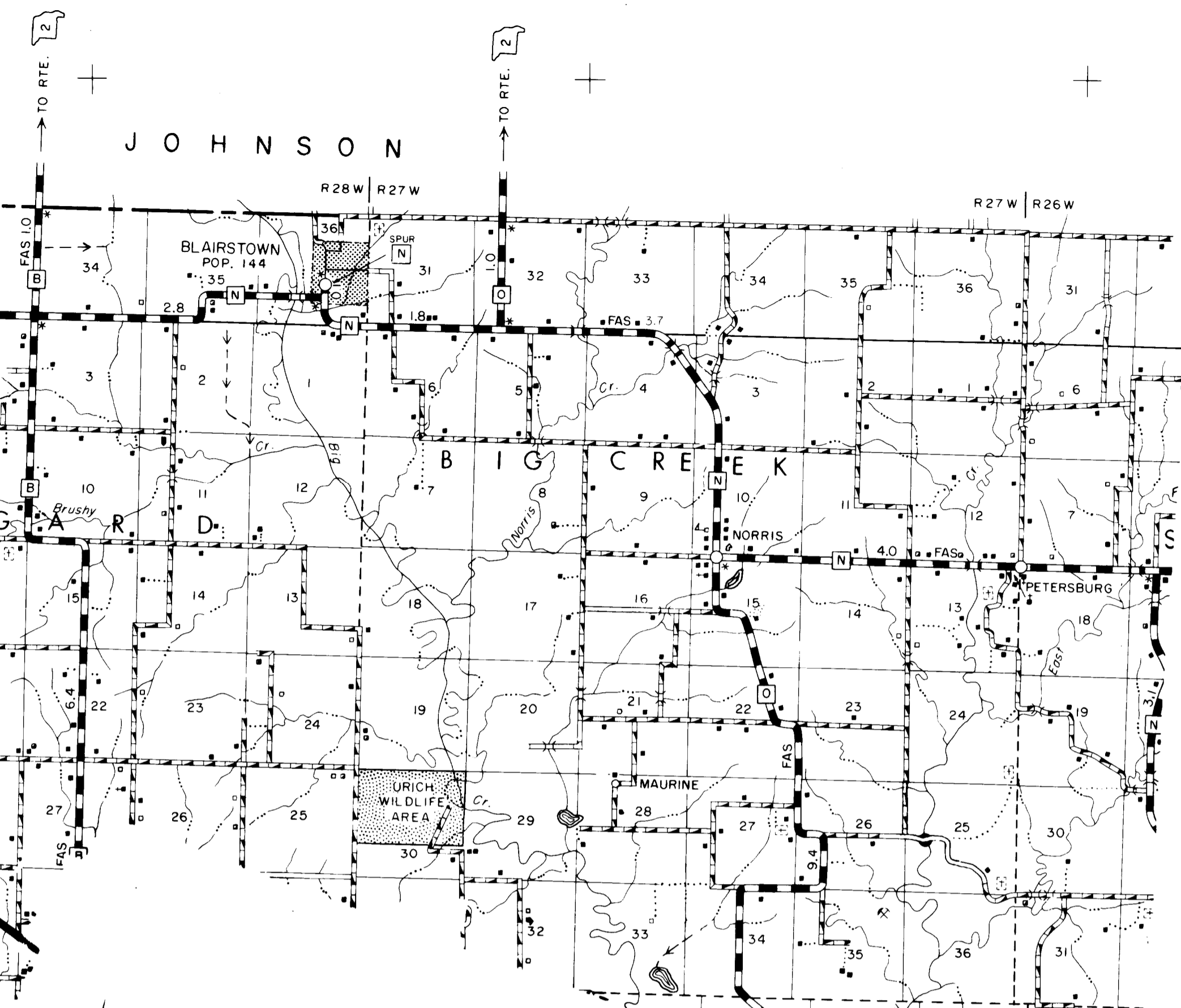
ROUTE  
B  
042  
HENRY

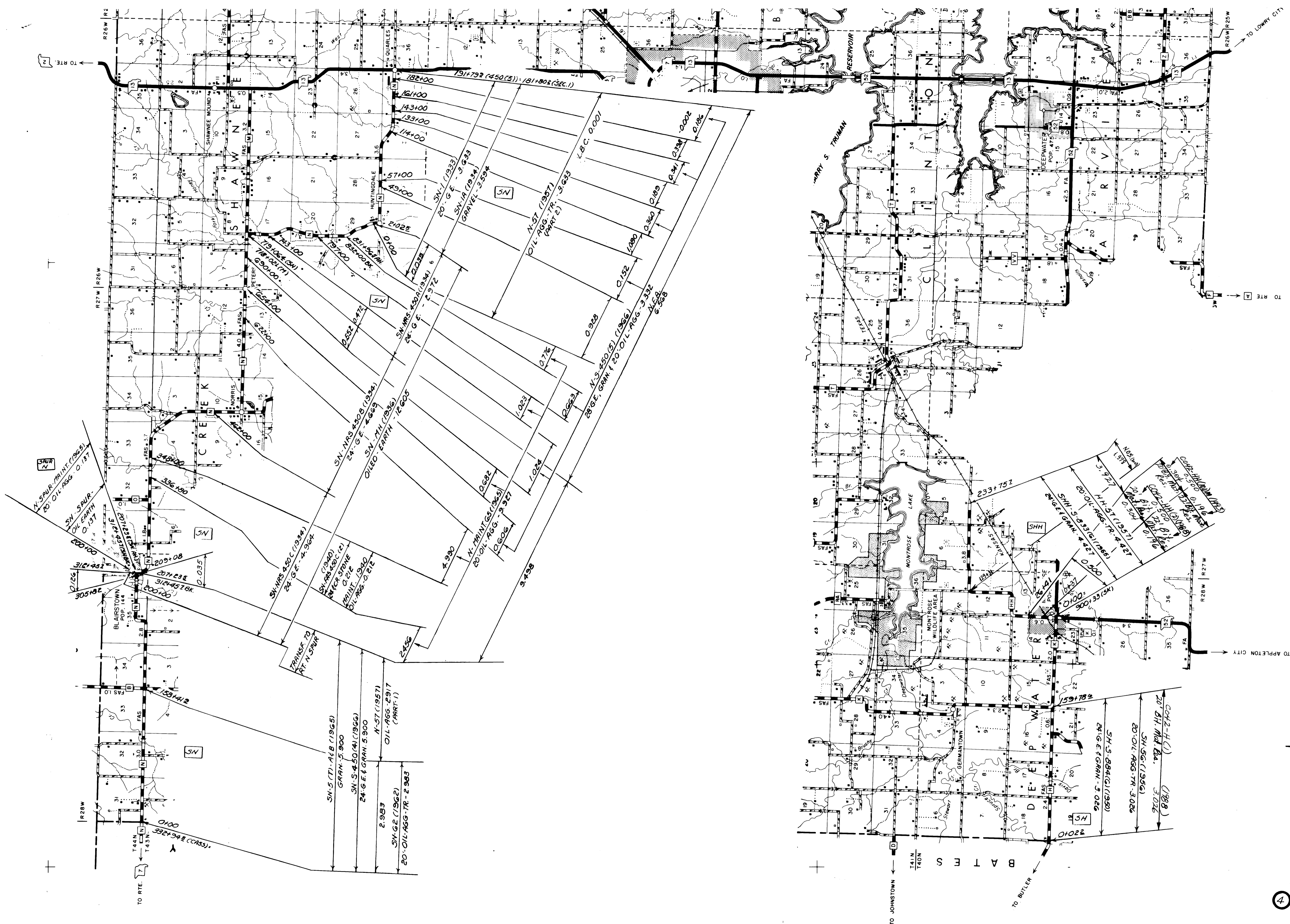


ROUTE  
F  
T  
AC  
AND-COUNTY ROAD  
THAT JCT'S WITH RTE. T  
52 SPUR (PART)  
MM

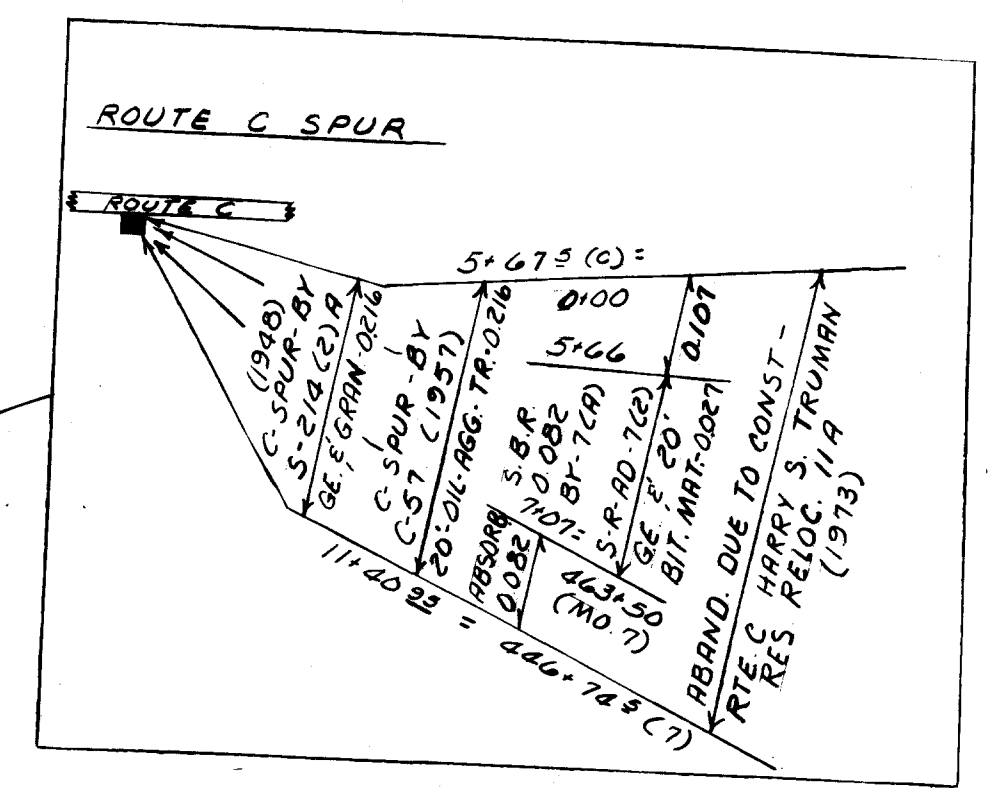
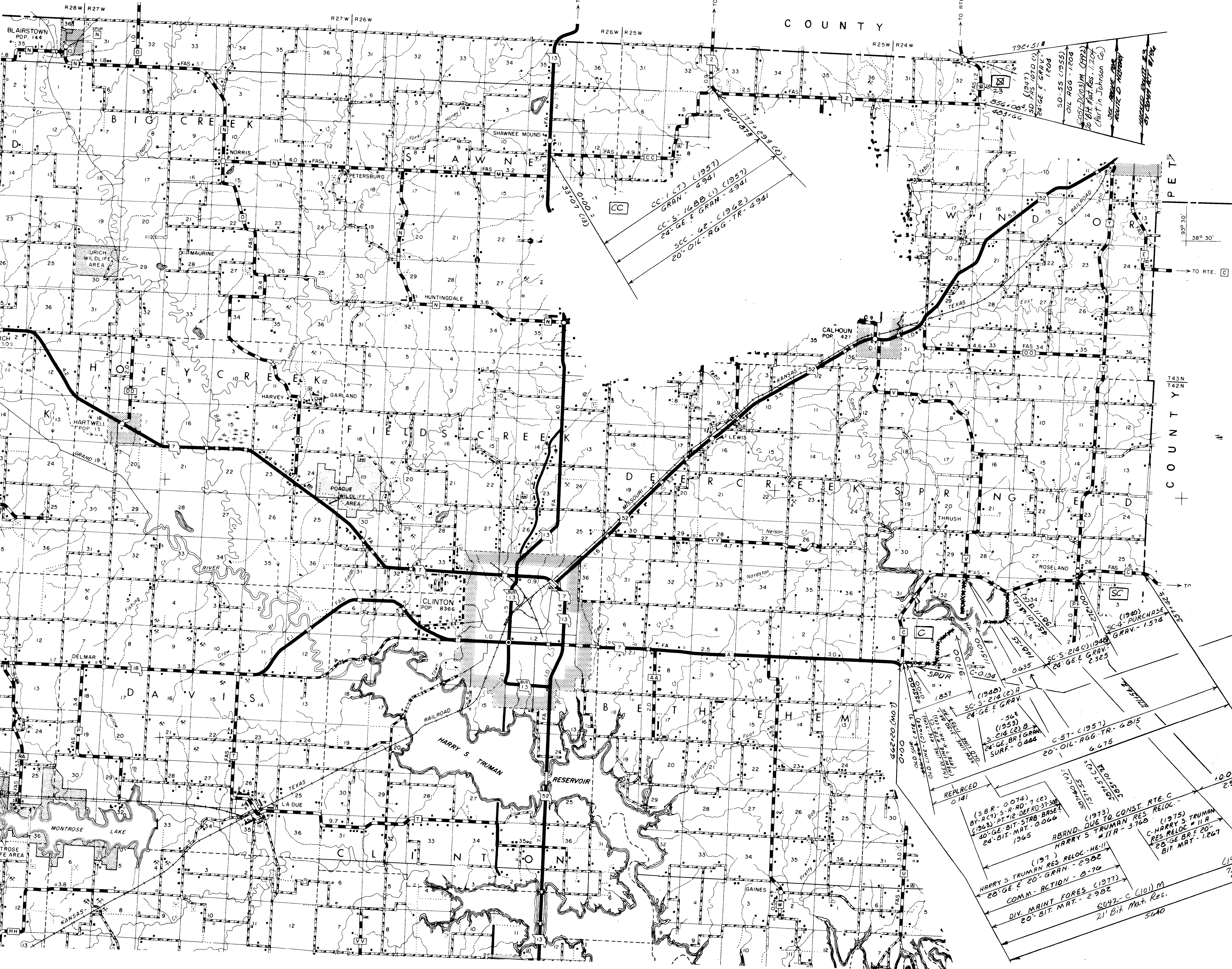


042  
HENRY





④ 042  
 HENRY



REPLACED 0.141

(S.B.R. - 0.074)  
BY ACT 5-2-AD-7 (C)  
(1963) AT 12 DEERD 31-30  
20'-GE-BIT-STAB-BASE  
24'-BIT-MAT. - 0.066  
1965

(1973)  
HARRY S. TRUMAN RES. RELOC. HE-11  
28'-GE-E 20'-GRAN. - 2982

COMM. ACTION - 8-70

DIV. MAINT FOS (1977)  
20'-BIT. MAT. - 2982

8042-C (10) M  
21' Bit. Mat. Res.  
5640

(1975)  
C. HARRY S. TRUMAN  
RES. RELOC. # 11 A  
28'-GE-BRE 20'  
BIT. MAT. - 1.267

(1988)  
7.222  
10.001

100-212  
100-212  
100-212  
100-212  
100-212  
100-212  
100-212  
100-212  
100-212  
100-212

ROUTE  
CC HISTORY  
C  
23