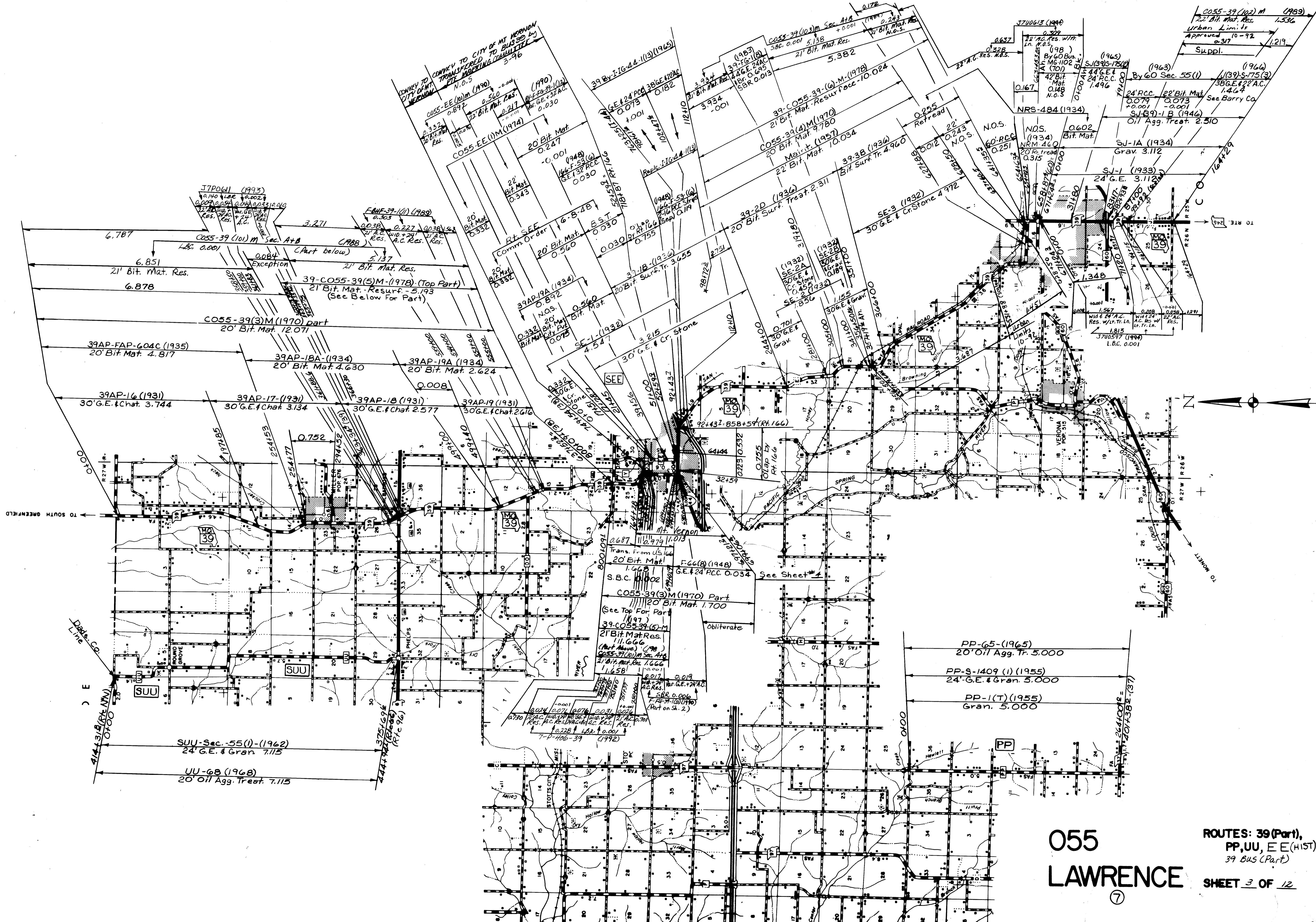


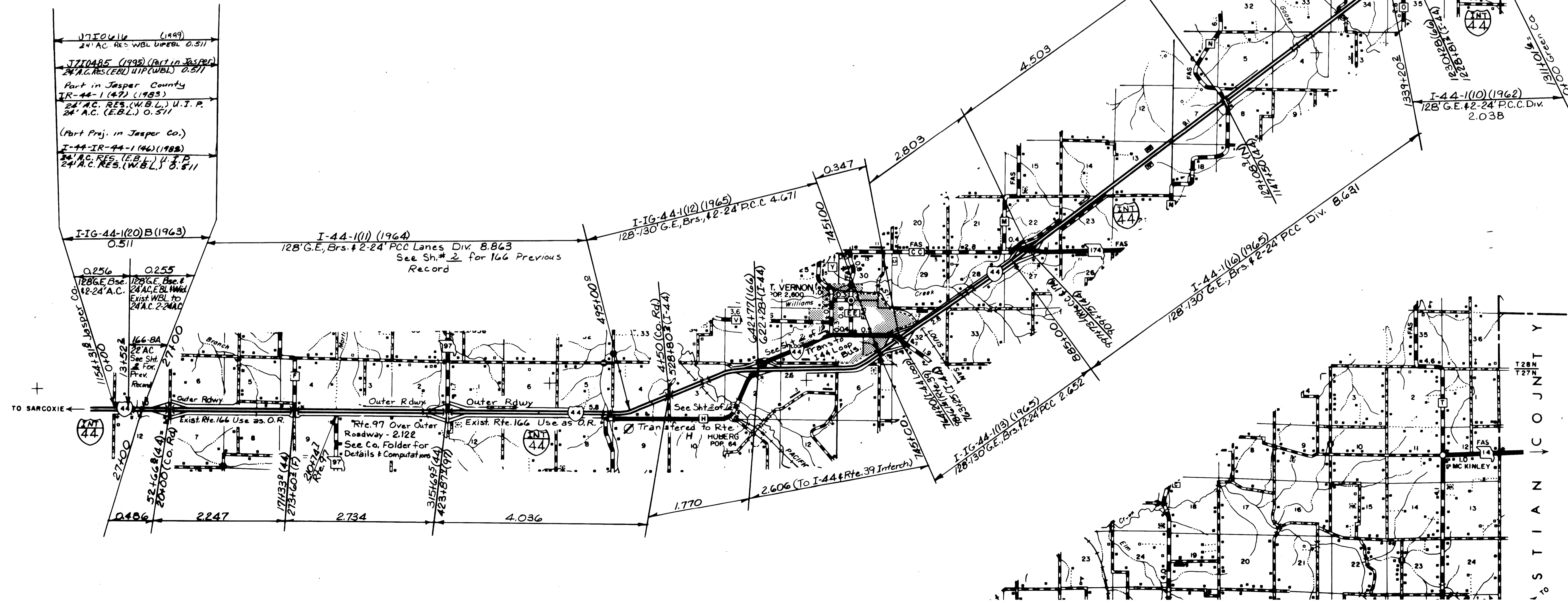
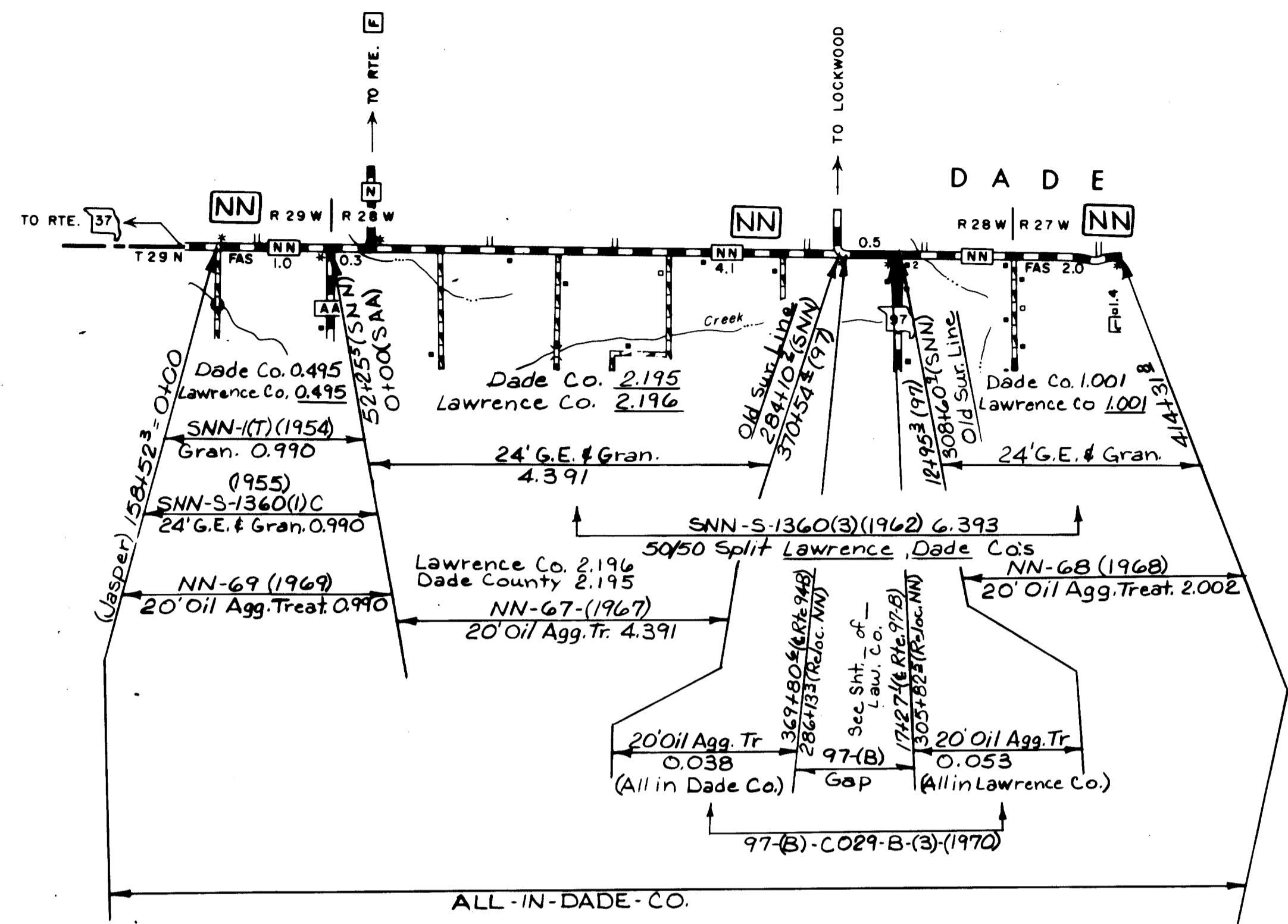
055
LAWRENCE
⑦

ROUTES: 14
60, 37(A)
SHEET 1 OF 12



**055
LAWRENCE**

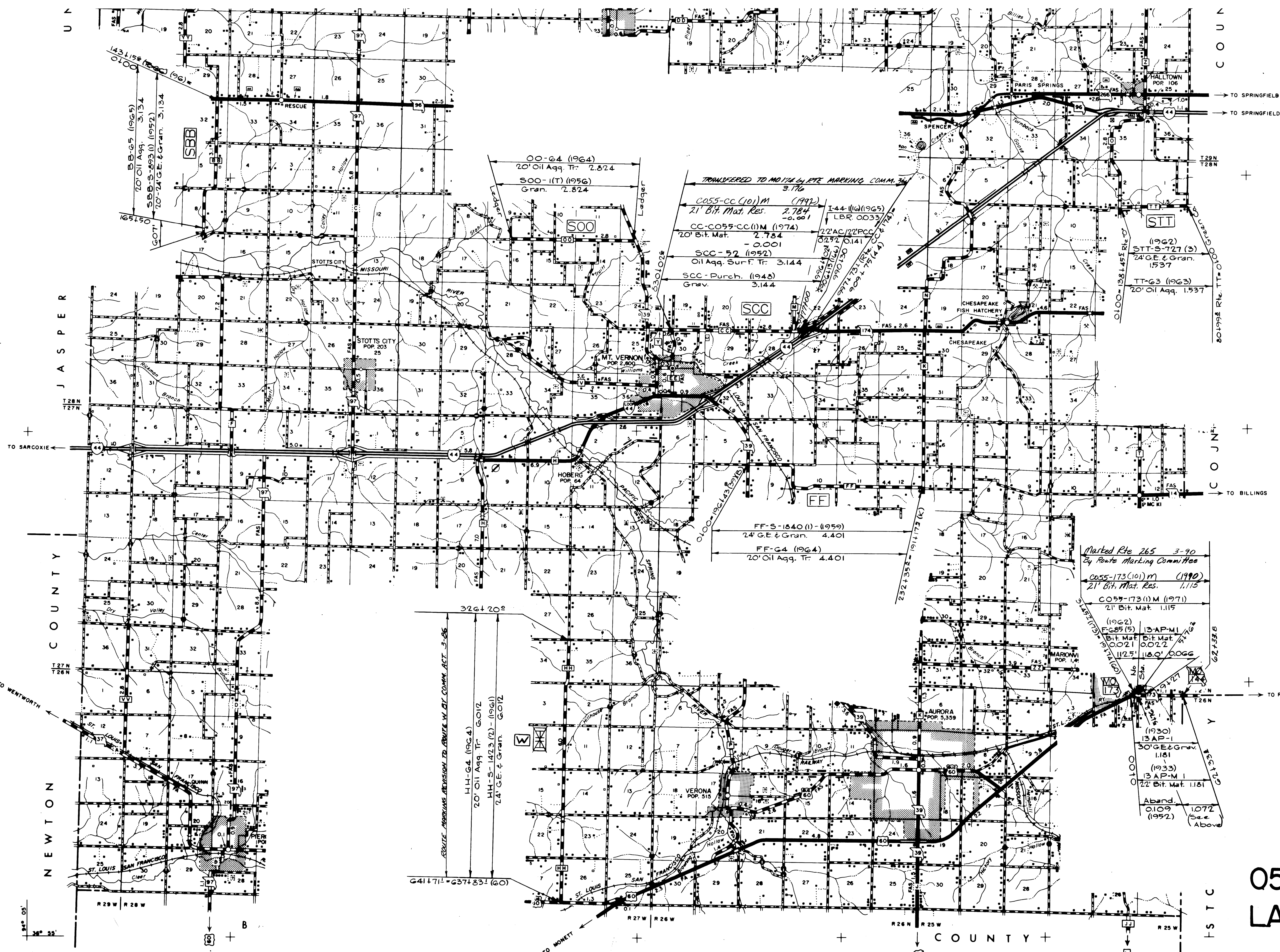
ROUTES: 39(Part),
PP,UU,EE(HIST)
39 BUS(Part)
SHEET 3 OF 12



055
LAWRENCE

ROUTE: 44
SHEET 4 OF 12

⑦



143.15E (1966)
 0100
 20' Oil Agg. 3.134
 SBB-S-893 (I) (1952)
 20' GE & Gran. 3.134

00-64 (1964)
 20' Oil Agg. Tr. 2.824
 S00-1 (T) (1956)
 Gran. 2.824

TRANSFERRED TO MOBILE PETE MARKING COMM. 3-17-60
 C055-CC (10) M (1992)
 21' Bit. Mat. Res. 2.784
 LBR 0033
 CC-C055-CC (1) M (1974)
 20' Bit. Mat. 2.784
 - 0.001
 32.92 0.141
 996.14 2.00
 990.130
 997.73 (1) (1974)
 999.75 (1) (1974)

STT
 (1962)
 STT-S-727 (3)
 24' GE & Gran.
 1.537
 TT-63 (1963)
 20' Oil Agg. 1.537

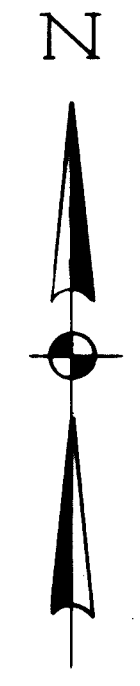
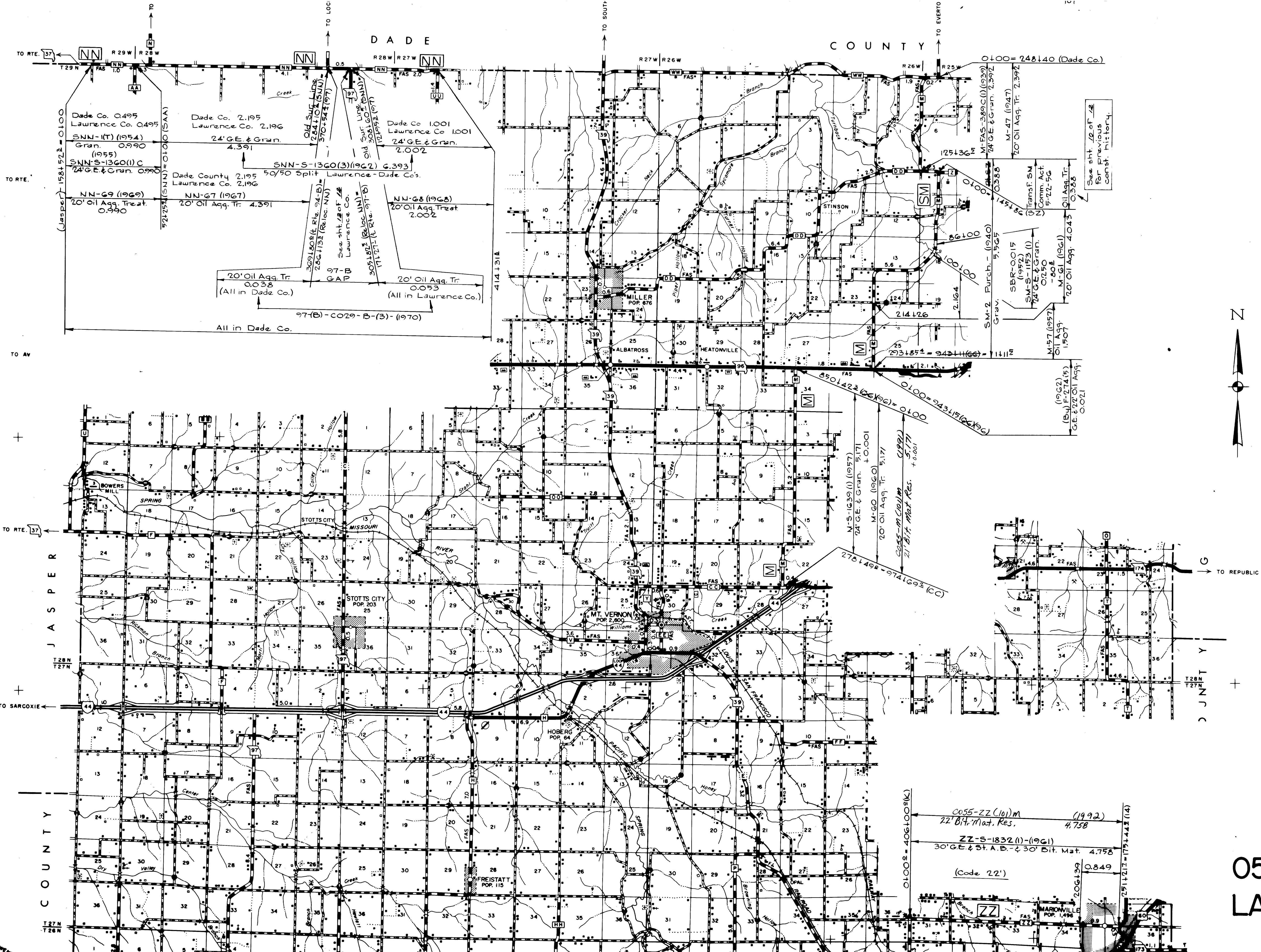
FF-S-1840 (I) - (1959)
 24' GE & Gran. 4.401
 FF-64 (1964)
 20' Oil Agg. Tr. 4.401

Marked Rte 265 3-90
 By Route Marking Committee
 C055-173 (10) M (1990)
 21' Bit. Mat. Res. 1.115
 C055-173 (1) M (1971)
 21' Bit. Mat. 1.115
 (1962)
 Fg85 (5) 13-AP-M
 Bit. Mat. Bit. Mat.
 C0021 0.072
 112.5 118.0 0.066
 (1930)
 13-AP-1
 30' GE & Gran.
 1.181
 (1933)
 13-AP-M
 22' Bit. Mat. 1.181
 Aband.
 0109 1072
 (1952) (See Above)

ROUTE MARKING REVISION TO ROUTE W BY COMM. ACT. 3-26
 HH-G4 (1964)
 20' Oil Agg. Tr. 6.012
 HH-S-1423 (2) - (1961)
 24' GE & Gran. 6.012

G41+71L+G37+83L (60)

055
 LAWRENCE
 ROUTES: 265, BB,
 FF, W, CC, OO, TT
 174 (Part)
 SHEET 6 OF 12
 7

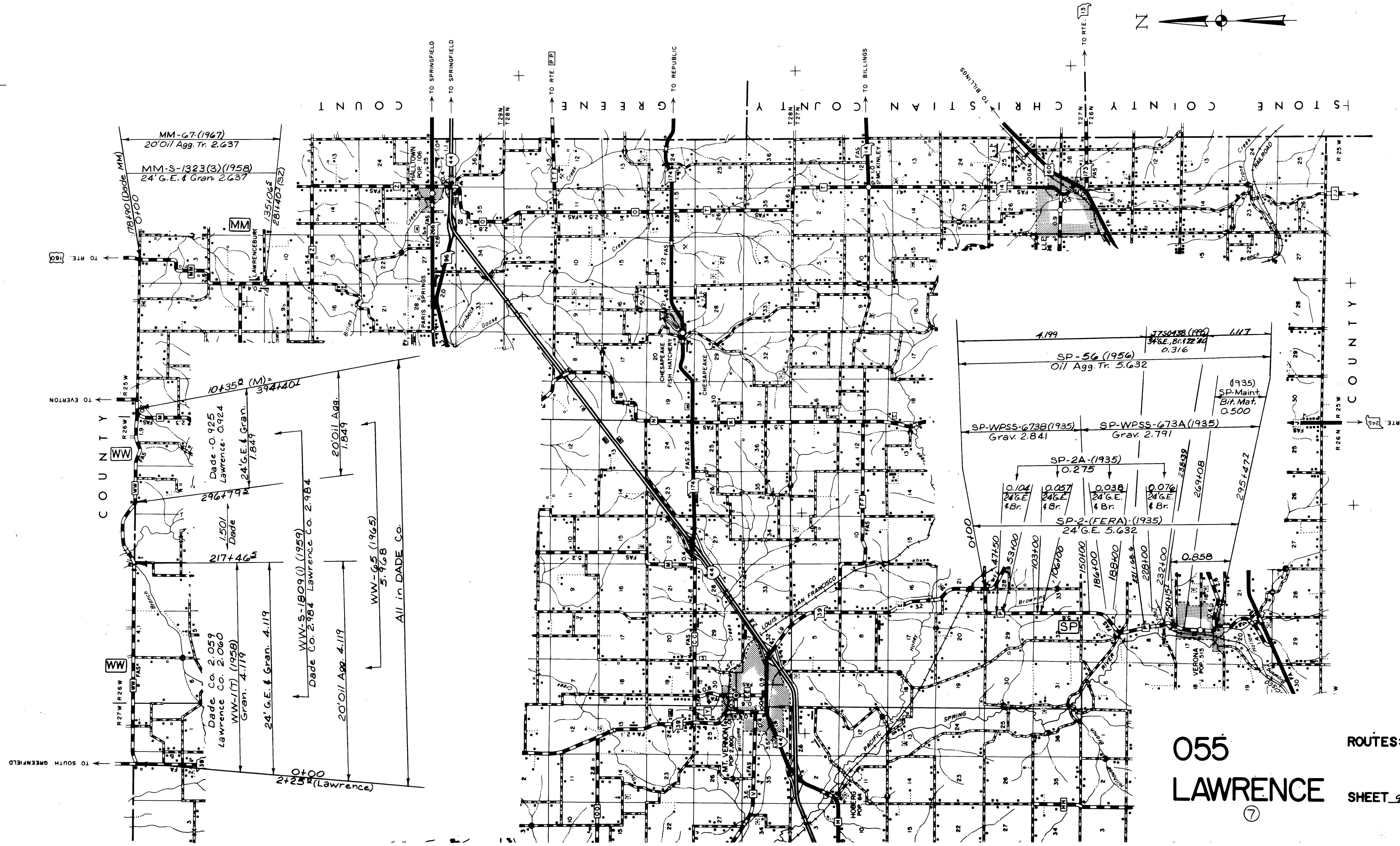


055
LAWRENCE
 ROUTES: M, ZZ
 SHEET 8 OF 12
 ⑦

Dade Co. 0.495
 Lawrence Co. 0.495
 SNN-1(T) (1954)
 Gran. 0.990
 (1955)
 SNN-S-1360(1) C
 24' GE & Cran. 0.990
 Dade Co. 2.195
 Lawrence Co. 2.196
 24' GE & Cran.
 4.391
 Dade Co. 1001
 Lawrence Co. 1001
 24' GE & Cran.
 2.002
 SNN-S-1360(3) (1962) G.393
 50/50 Split Lawrence-Dade Co's.
 Dade County 2.195
 Lawrence Co. 2.196
 NN-69 (1969)
 20' Oil Agg. Treat.
 0.990
 NN-67 (1967)
 20' Oil Agg. Tr.
 4.391
 NN-68 (1968)
 20' Oil Agg. Treat.
 2.002
 20' Oil Agg. Tr.
 0.038
 (All in Dade Co.)
 20' Oil Agg. Tr.
 0.053
 (All in Lawrence Co.)
 97(B)-C029-B-(3)-(1970)
 All in Dade Co.
 4141.314
 0+00 = 248140 (Dade Co.)
 M-FAS-389C(1) (1939)
 74' GE & Cran. 2.392
 M-47 (1947)
 20' Oil Agg. Tr. 2.392
 SBR-0015
 (1952)
 SM-S-1153(1)
 74' GE & Cran.
 0.250
 M-61 (1961)
 20' Oil Agg. Tr.
 4.043
 M-57 (1957)
 Oil Agg.
 1.507
 (1962)
 (B) F-274(5)
 1 GE & 22' Oil Agg.
 0.001
 See sht. 10 of 12
 for previous
 const. history.

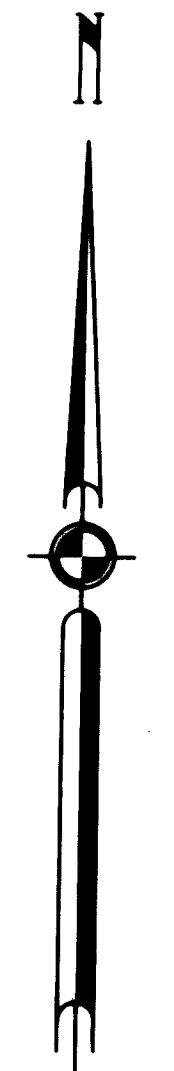
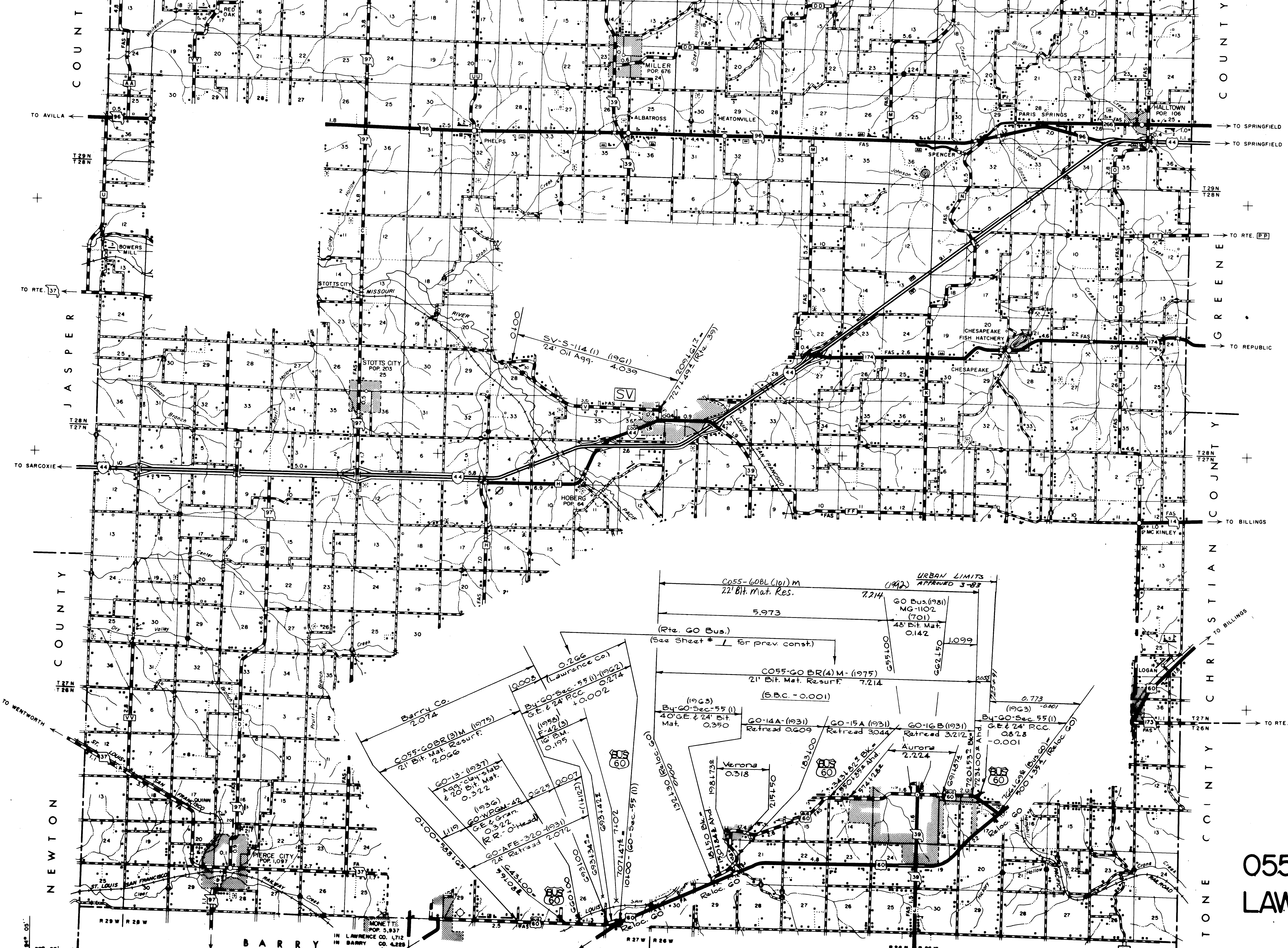
BOWERS MILL
 SPRING
 STOTT'S CITY
 MISSOURI
 STOTT'S CITY
 POP. 203
 25
 MT. VERNON
 POP. 2,000
 WILLIAMS
 HOBERG
 POP. 54
 FREISTATT
 POP. 113
 MARIONVILLE
 POP. 1,496
 2701498-9141693 (CO)
 N-S-1639(1) (1957)
 24' GE & Cran. 5.171
 + 0.001
 M-GO (1960)
 20' Oil Agg. Tr. 5.171
 C055-M CO(1) M
 (1991)
 21' Bit. Mat. Res.
 5.171
 + 0.001
 01008 = 4061008(K)
 C055-ZZ (10) M
 22' Bit. Mat. Res. (1992)
 4.758
 ZZ-S-1832(1)-(1961)
 30' GE & St. A. B. - 430' Bit. Mat. 4.758
 (Code 22')
 0.849
 206139
 2511212 = 1751443 (14)

37° 20' 55"



055
LAWRENCE
⑦

ROUTES: P, MM
W.W.
SHEET 9 OF 12



055
LAWRENCE

ROUTES: V,
60 Bus.
SHEET 11 OF 12

IN LAWRENCE CO. 1,712
IN BARRY CO. 4,228

