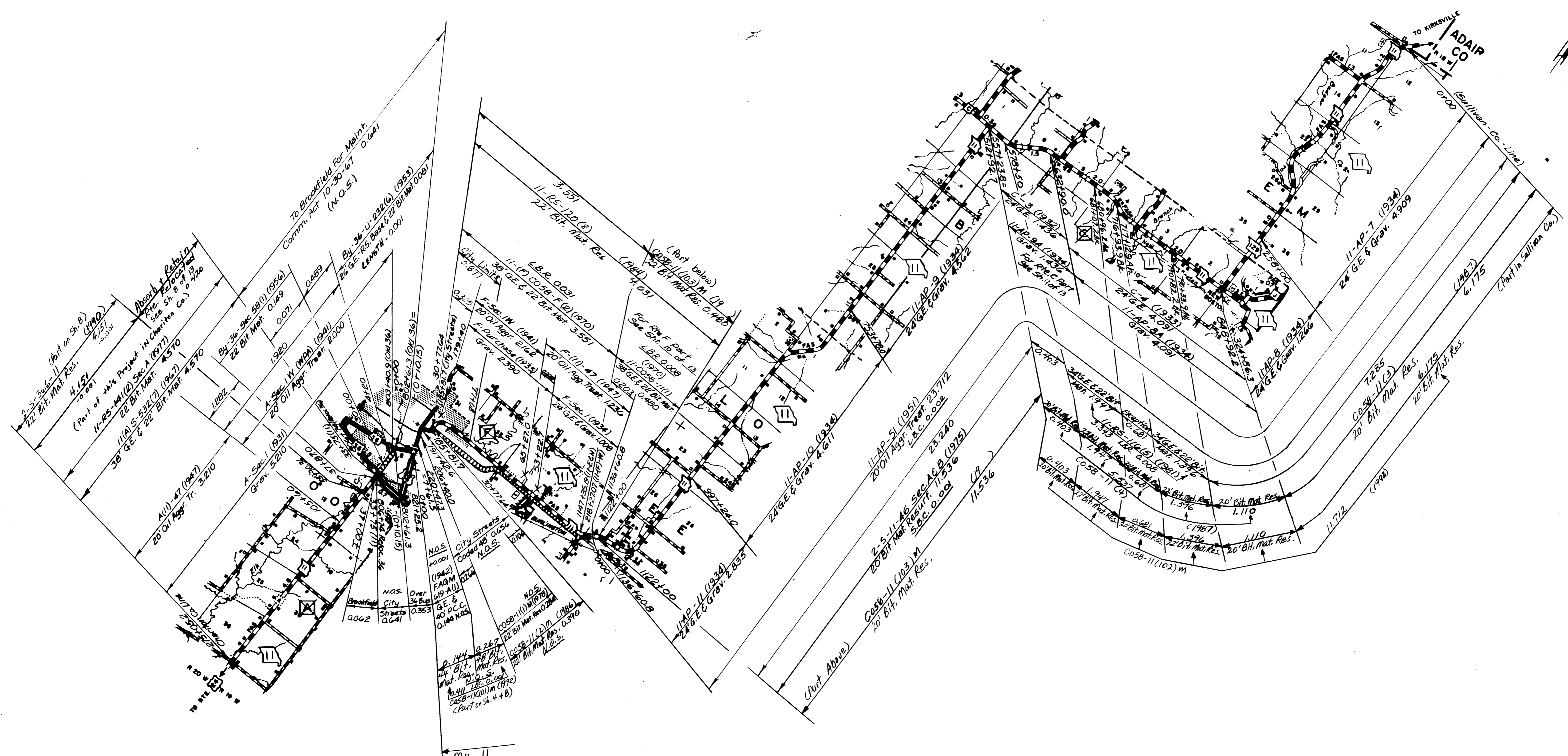


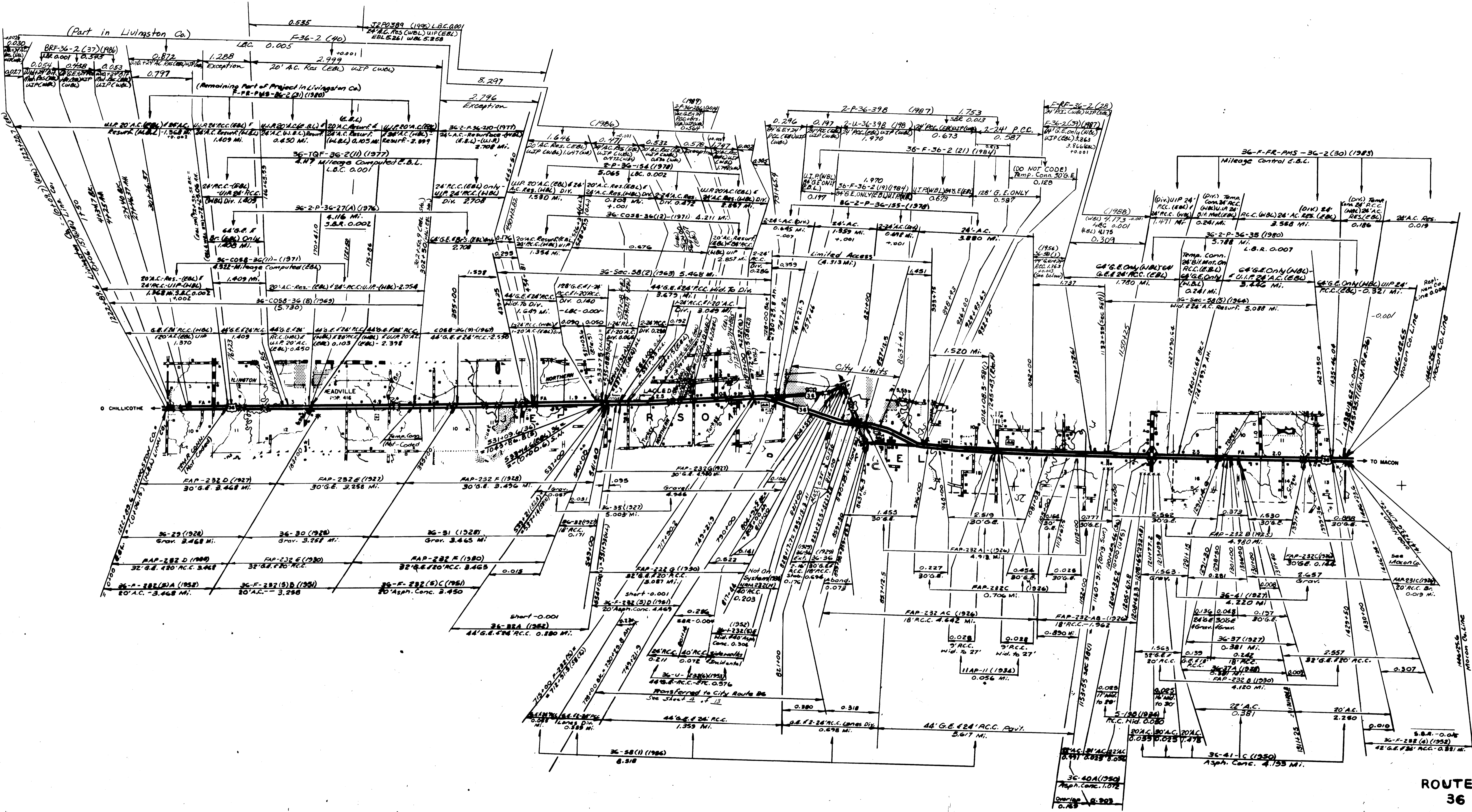
② 058 SHEET 1 OF 13  
**LINN**

ROUTES  
 5  
 5 SPUR

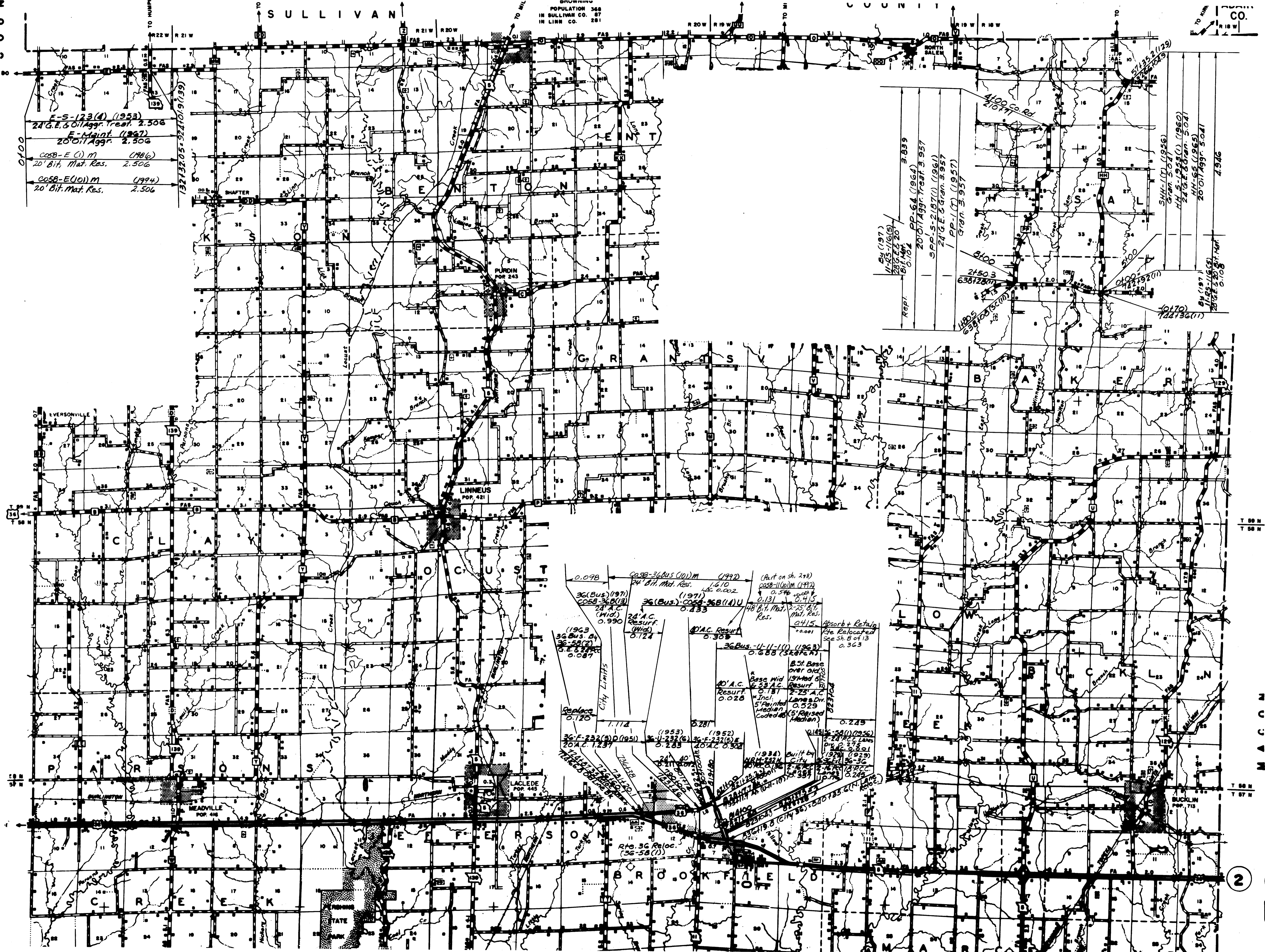
5-19 (1926)  
 30' G.E. 2.984  
 5-19A (1927)  
 Grav. 2.984  
 5-19B (1934)  
 20' P.C.C. 2.232  
 5-NRM-237A (1934)  
 32' G.E. C 20' P.C.C. 1.117  
 0.388  
 0.365  
 5-19C (1931)  
 24' A.C. 0.663  
 5-SEC 58(1) (1961)  
 24' A.C. Res. 1.053  
 5-19D (1931)  
 24' A.C. Res. 1.053  
 5-19E (1931)  
 24' A.C. Res. 1.053  
 5-19F (1931)  
 24' A.C. Res. 1.053  
 5-19G (1931)  
 24' A.C. Res. 1.053  
 5-19H (1931)  
 24' A.C. Res. 1.053  
 5-19I (1931)  
 24' A.C. Res. 1.053  
 5-19J (1931)  
 24' A.C. Res. 1.053  
 5-19K (1931)  
 24' A.C. Res. 1.053  
 5-19L (1931)  
 24' A.C. Res. 1.053  
 5-19M (1931)  
 24' A.C. Res. 1.053  
 5-19N (1931)  
 24' A.C. Res. 1.053  
 5-19O (1931)  
 24' A.C. Res. 1.053  
 5-19P (1931)  
 24' A.C. Res. 1.053  
 5-19Q (1931)  
 24' A.C. Res. 1.053  
 5-19R (1931)  
 24' A.C. Res. 1.053  
 5-19S (1931)  
 24' A.C. Res. 1.053  
 5-19T (1931)  
 24' A.C. Res. 1.053  
 5-19U (1931)  
 24' A.C. Res. 1.053  
 5-19V (1931)  
 24' A.C. Res. 1.053  
 5-19W (1931)  
 24' A.C. Res. 1.053  
 5-19X (1931)  
 24' A.C. Res. 1.053  
 5-19Y (1931)  
 24' A.C. Res. 1.053  
 5-19Z (1931)  
 24' A.C. Res. 1.053



ROUTE:  
II Part



ROUTE :  
36



F-5-123(4) (1953)  
 24' G.E. 50' Aggr. Treat. 2.506  
 E-Maint. (1967)  
 20' Bit. Mat. Res. 2.506  
 COSB-E (1) M (1986)  
 20' Bit. Mat. Res. 2.506  
 COSB-E (10) M (1994)  
 20' Bit. Mat. Res. 2.506

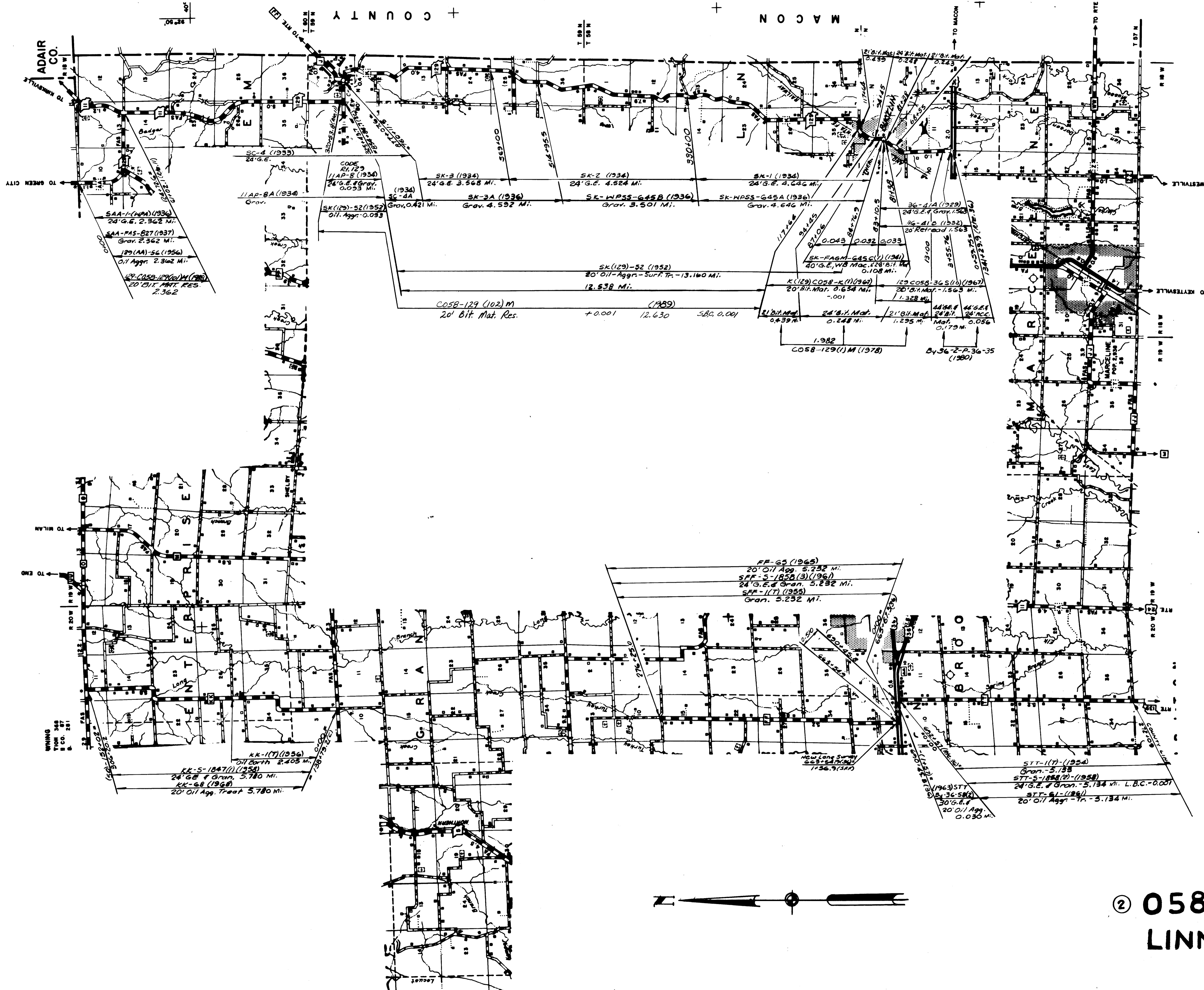
4100 Co. Rd. 21071  
 344-1(1) (1956)  
 544-5(1) (1960)  
 241-2(1) (1963)  
 241-2(1) (1963)  
 20' Bit. Mat. Res. 2.506  
 20' Bit. Mat. Res. 2.506  
 20' Bit. Mat. Res. 2.506  
 20' Bit. Mat. Res. 2.506  
 20' Bit. Mat. Res. 2.506

0.098  
 CASE-36BUS (10) M (1992)  
 24' Bit. Mat. Res. 0.002  
 36(Bus) (1971)  
 36(Bus)-36B(13)  
 24' A.C.  
 (Mid.)  
 0.990  
 (1963)  
 36 Bus. 34  
 36-58(2)  
 24' A.C.  
 0.087  
 0.170  
 City Limits  
 1.112  
 36-F-232(a) (1951)  
 20' A.C. 1.237  
 (1953)  
 36-F-232(b) (1951)  
 20' A.C. 1.237  
 (1952)  
 36-F-232(c) (1951)  
 20' A.C. 0.302  
 (1934) Built by  
 36-F-232(d) (1951)  
 20' A.C. 0.246  
 36-F-232(e) (1951)  
 20' A.C. 0.246  
 36-F-232(f) (1951)  
 20' A.C. 0.246  
 36-F-232(g) (1951)  
 20' A.C. 0.246  
 36-F-232(h) (1951)  
 20' A.C. 0.246  
 36-F-232(i) (1951)  
 20' A.C. 0.246  
 36-F-232(j) (1951)  
 20' A.C. 0.246  
 36-F-232(k) (1951)  
 20' A.C. 0.246  
 36-F-232(l) (1951)  
 20' A.C. 0.246  
 36-F-232(m) (1951)  
 20' A.C. 0.246  
 36-F-232(n) (1951)  
 20' A.C. 0.246  
 36-F-232(o) (1951)  
 20' A.C. 0.246  
 36-F-232(p) (1951)  
 20' A.C. 0.246  
 36-F-232(q) (1951)  
 20' A.C. 0.246  
 36-F-232(r) (1951)  
 20' A.C. 0.246  
 36-F-232(s) (1951)  
 20' A.C. 0.246  
 36-F-232(t) (1951)  
 20' A.C. 0.246  
 36-F-232(u) (1951)  
 20' A.C. 0.246  
 36-F-232(v) (1951)  
 20' A.C. 0.246  
 36-F-232(w) (1951)  
 20' A.C. 0.246  
 36-F-232(x) (1951)  
 20' A.C. 0.246  
 36-F-232(y) (1951)  
 20' A.C. 0.246  
 36-F-232(z) (1951)  
 20' A.C. 0.246

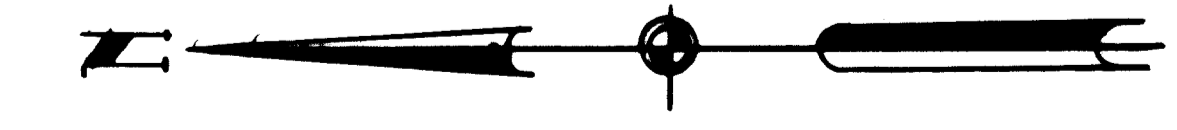


T 58 N  
 T 58 N  
 T 58 N  
 T 58 N  
 T 58 N  
 T 58 N

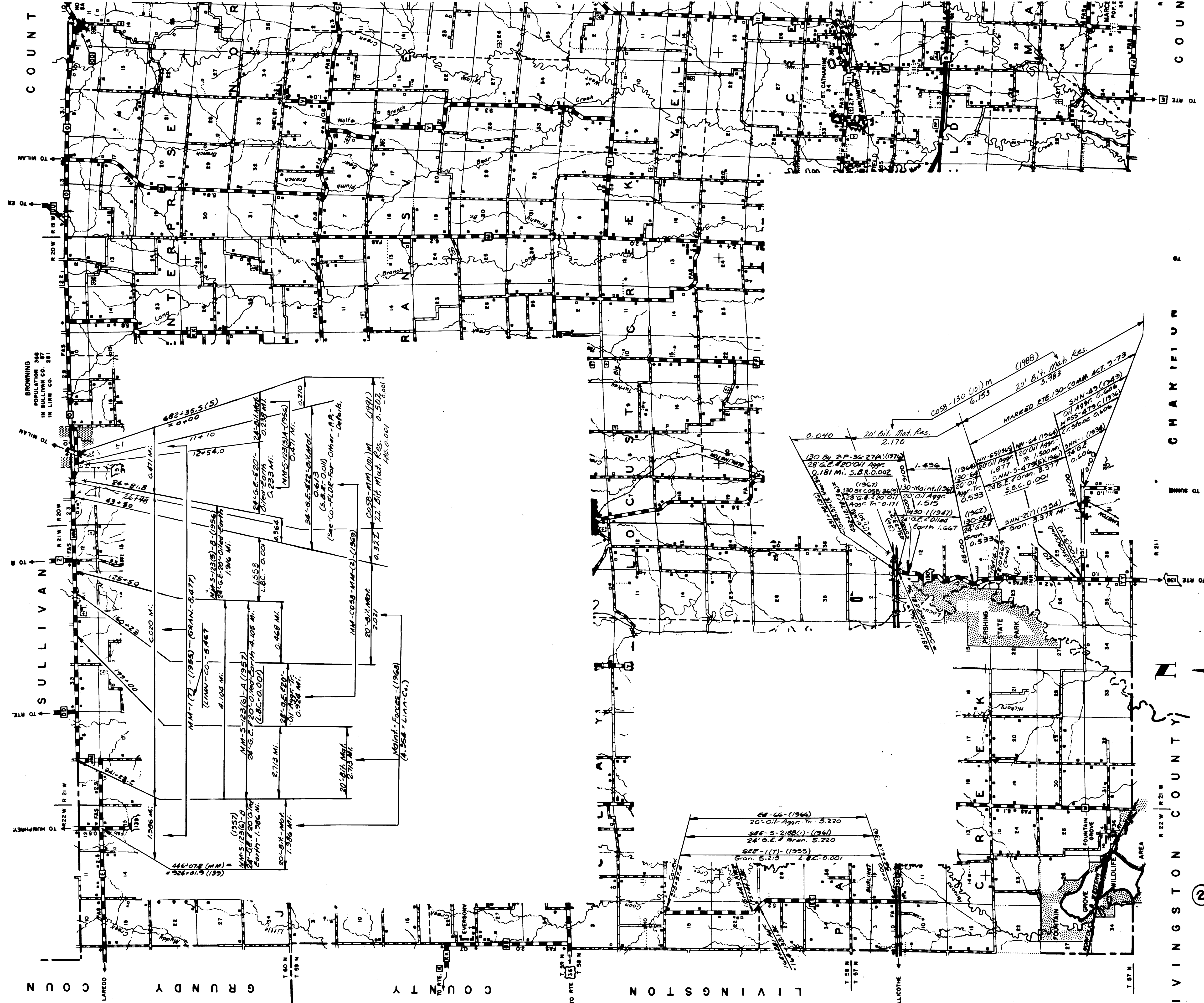
ROUTES  
 36 Bus. Part  
 E  
 HH  
 PP

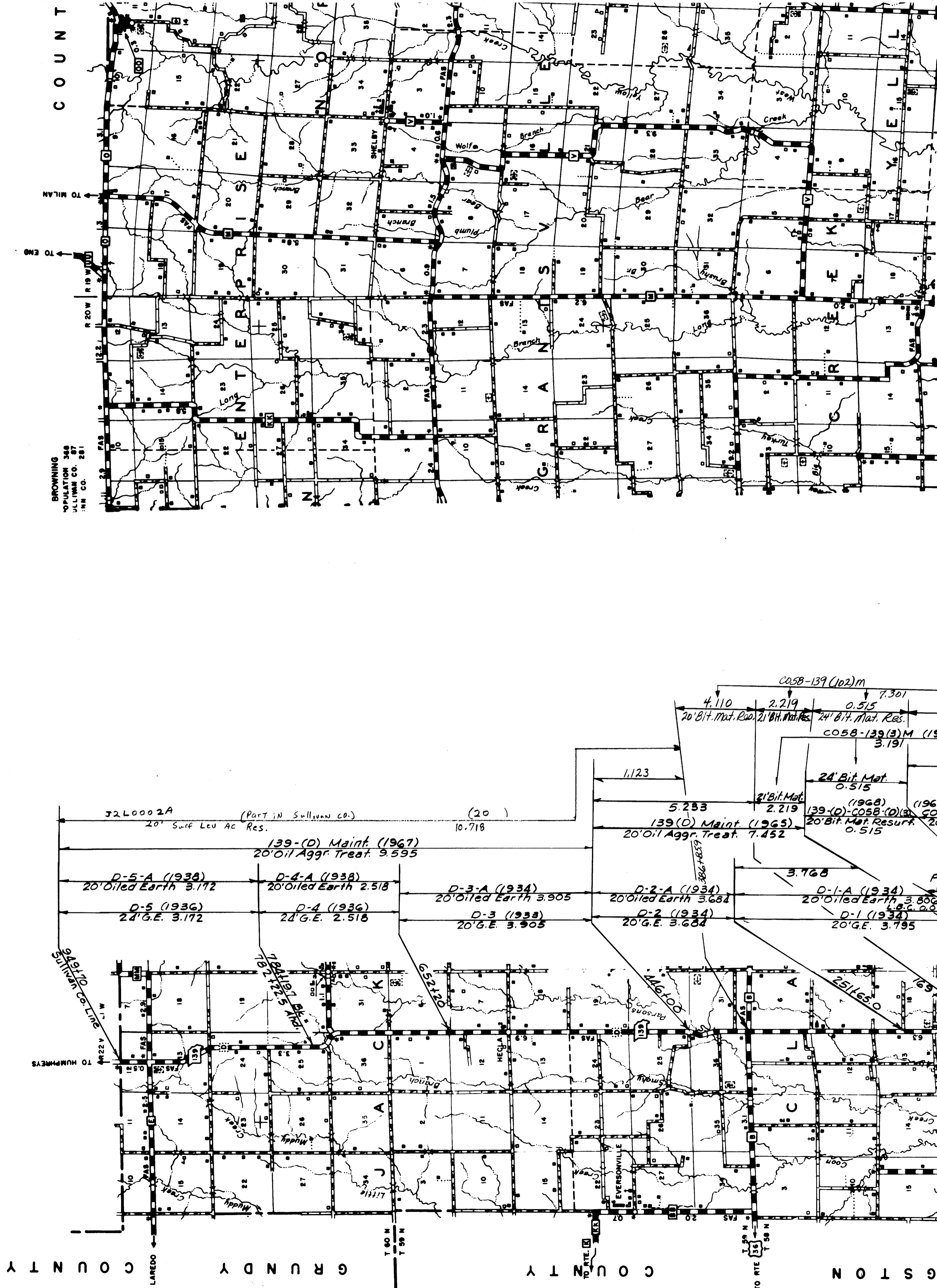


ROUTE :  
129  
KK  
FF  
TT



② 058 SHEET 5 OF 13  
LINN CO.



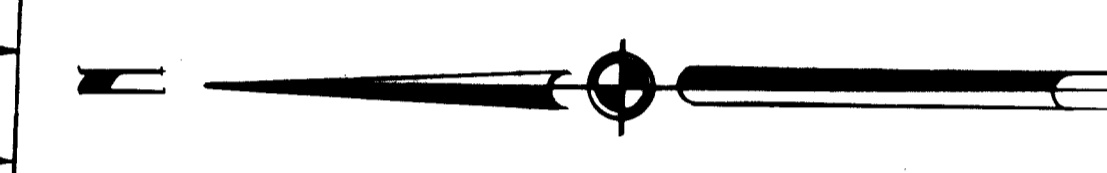
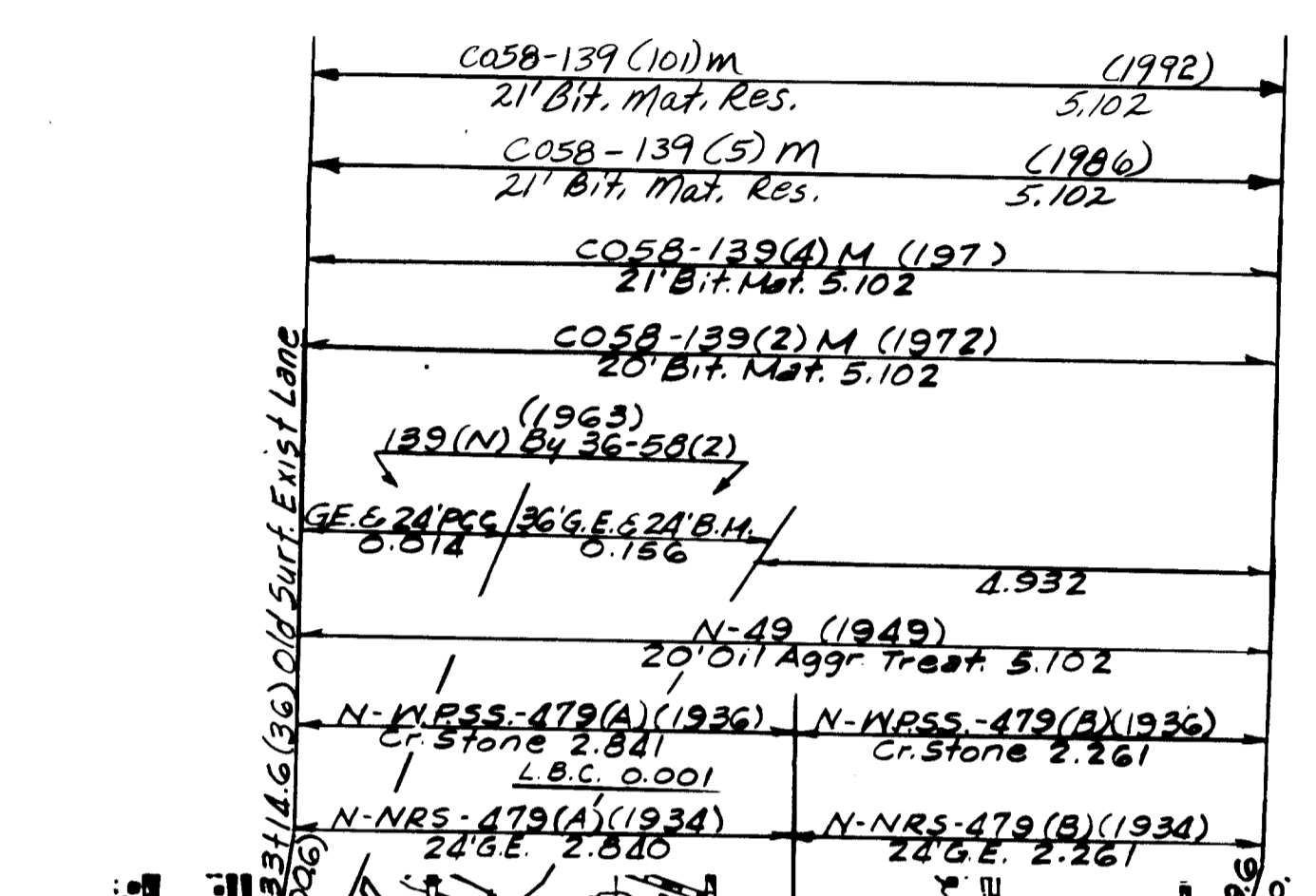


COUNT  
 TO MILAN  
 TO ENO  
 R 20 W R 19 W  
 BROWNING  
 POPULATION 548  
 1890 CO. 281  
 1840 CO.

GRUNDY COUNTY  
 LAREDO

COUNTY

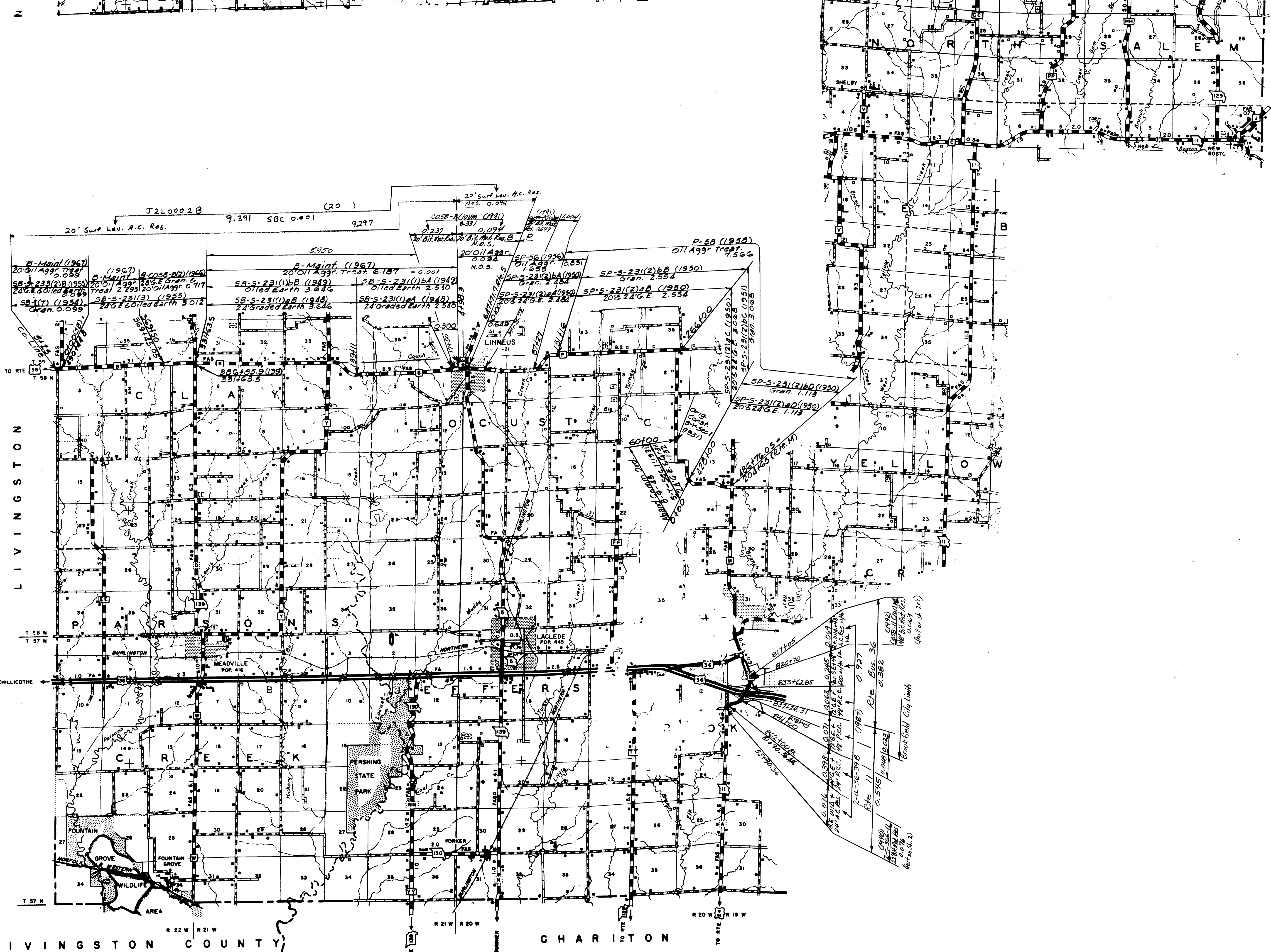
LIVINGSTON COUNTY  
 TO RTE 139  
 T 20 N  
 T 19 N  
 T 18 N  
 T 17 N



TO SUMNER  
 215+33.0  
 Jct. N 144  
 R 21 W R 20 W  
 TO RTE 139  
 I V I N G S T O N C O U N T Y

ROUTE  
 139

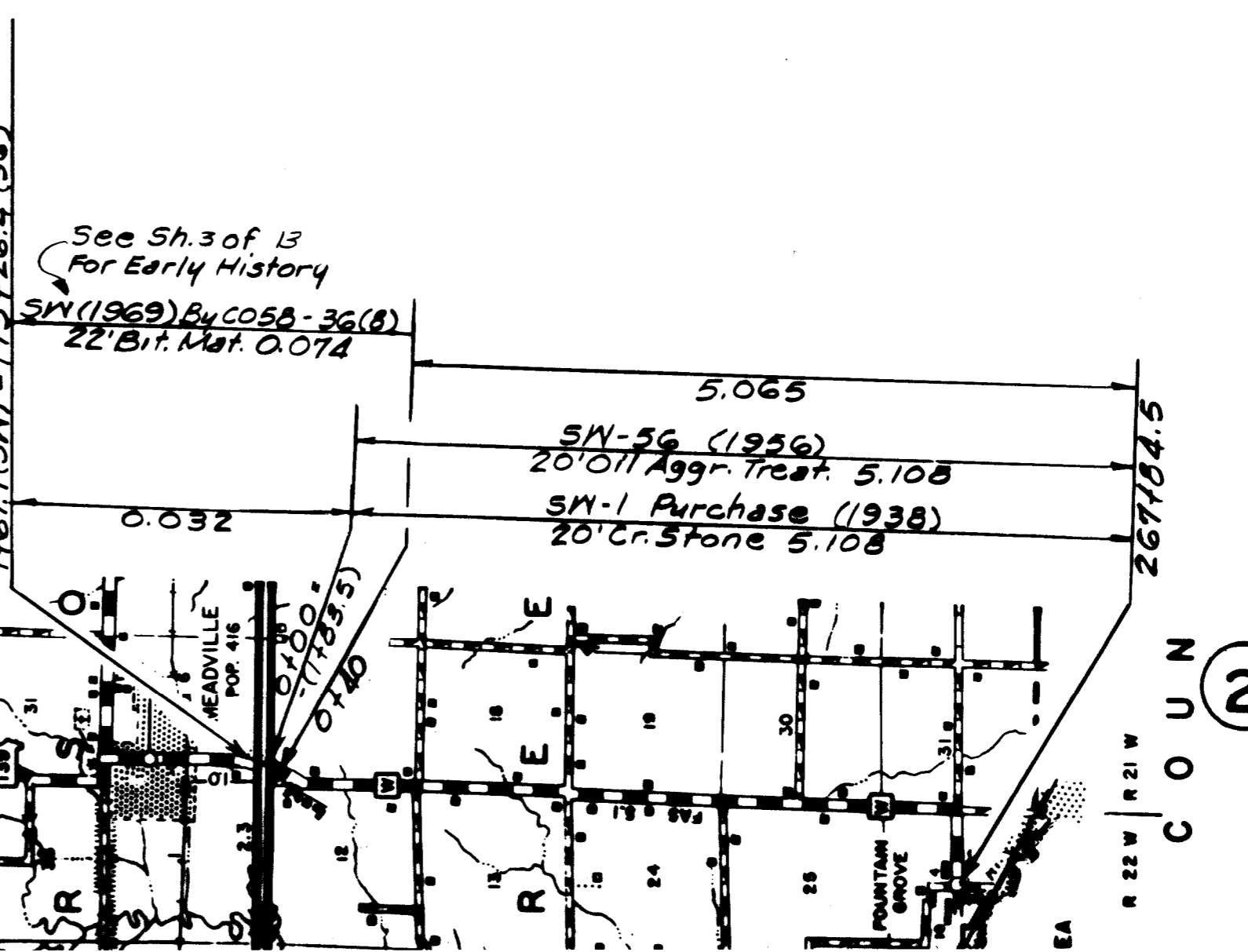
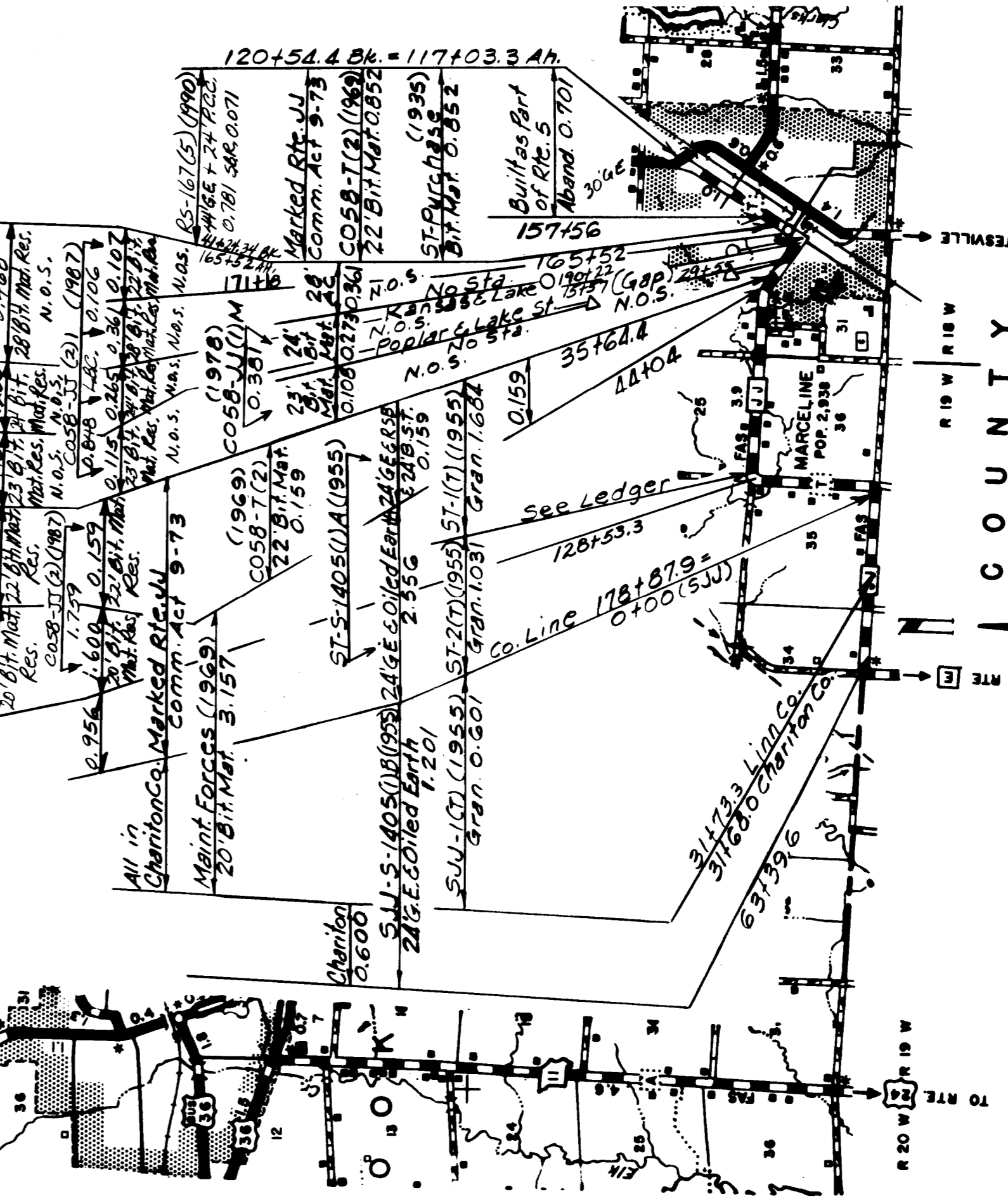
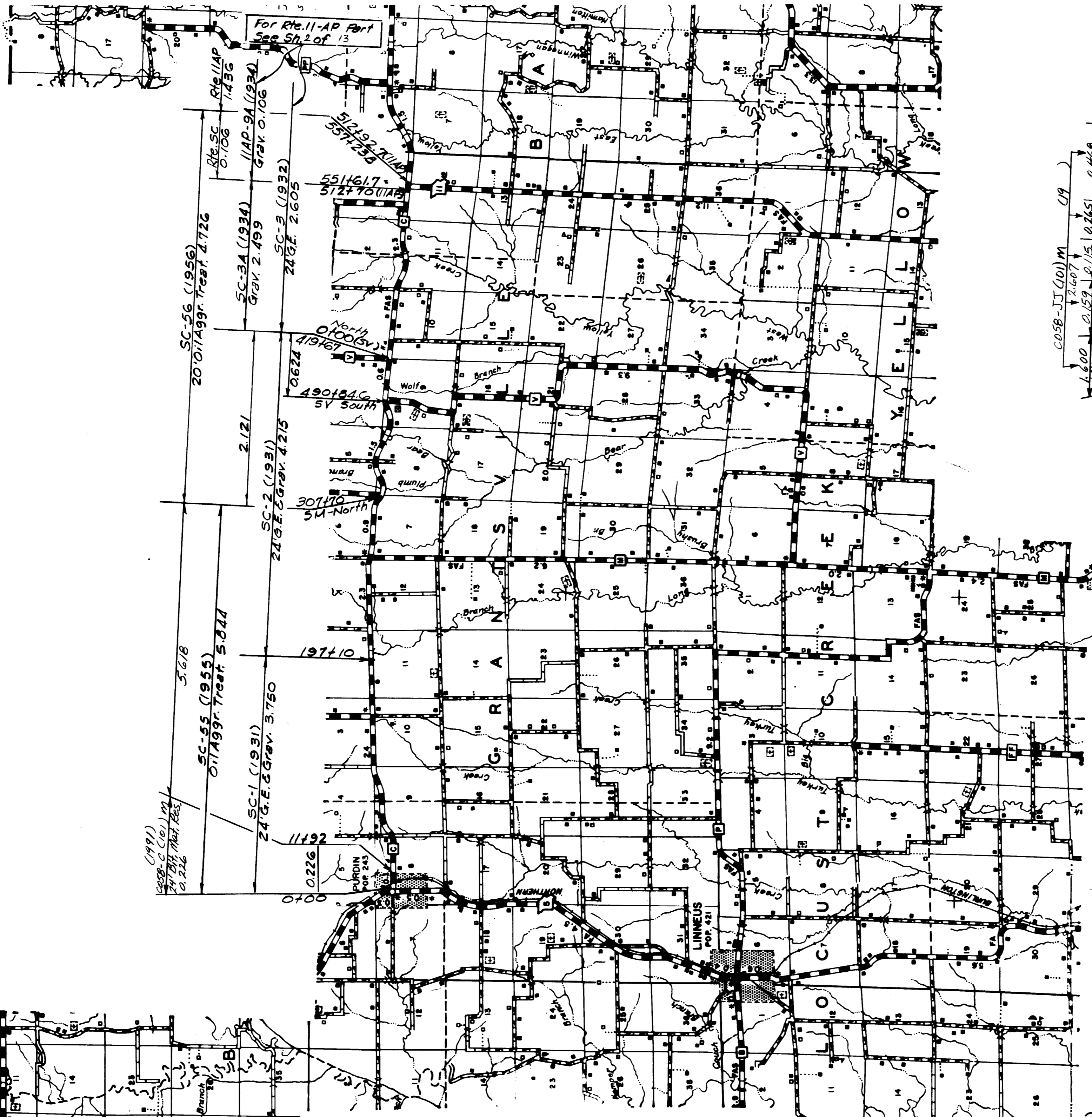
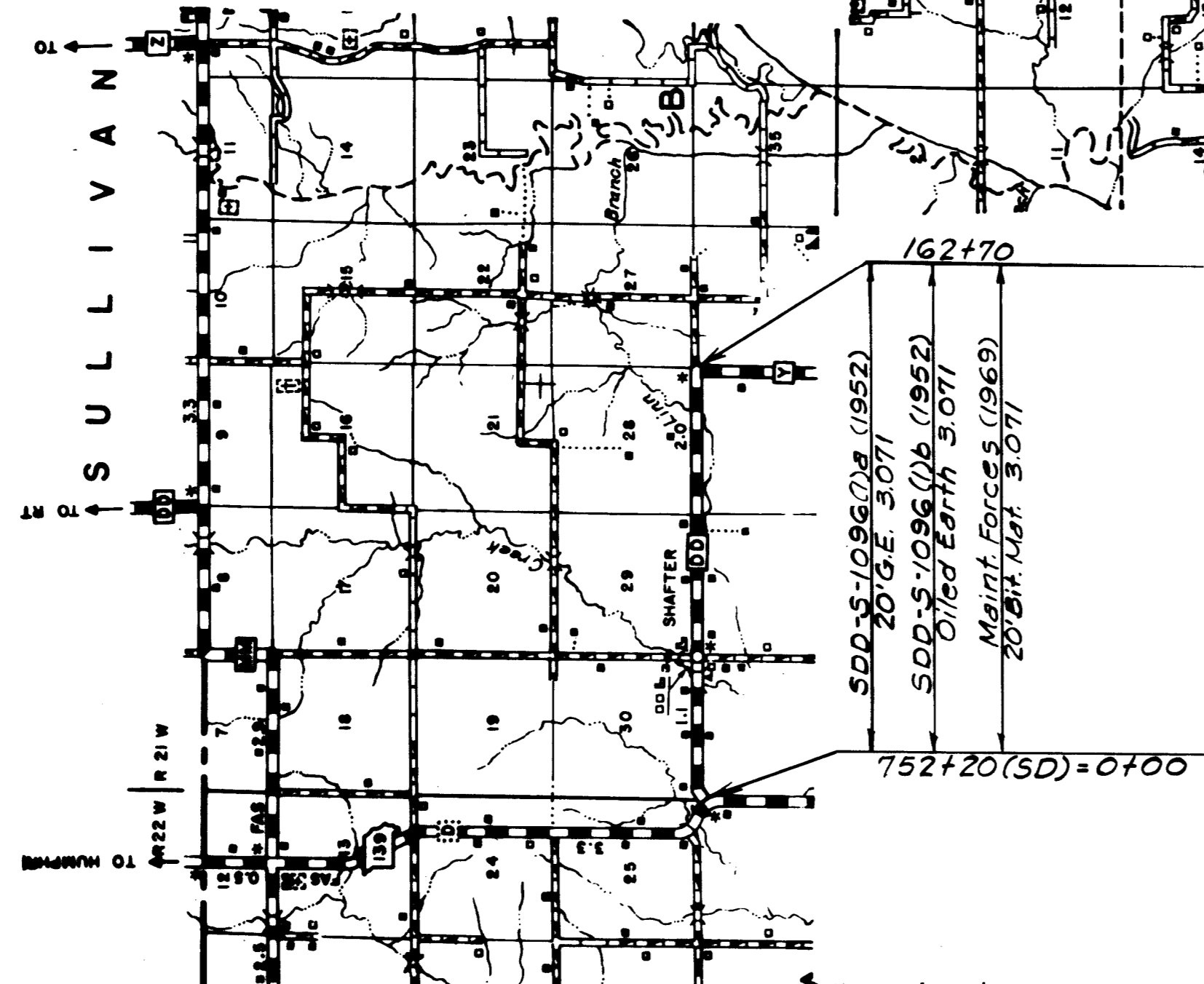
② 058 SHEET 7 OF 13  
 LINN



ROUTES  
 B  
 P  
 Y (abandoned)  
 36 Bus. Part  
 11 Part

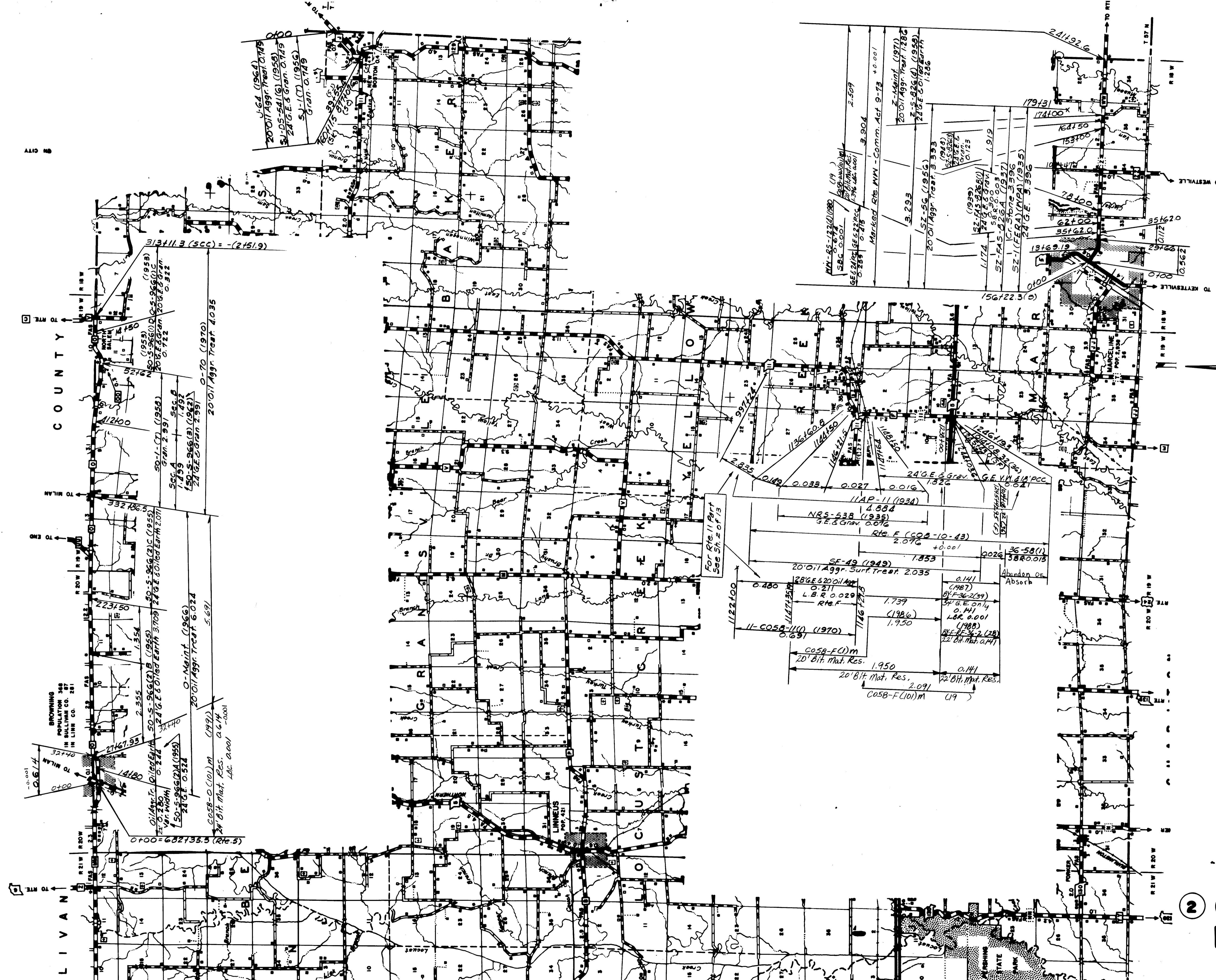
② 058 SHEET 8 OF 13  
 LINN



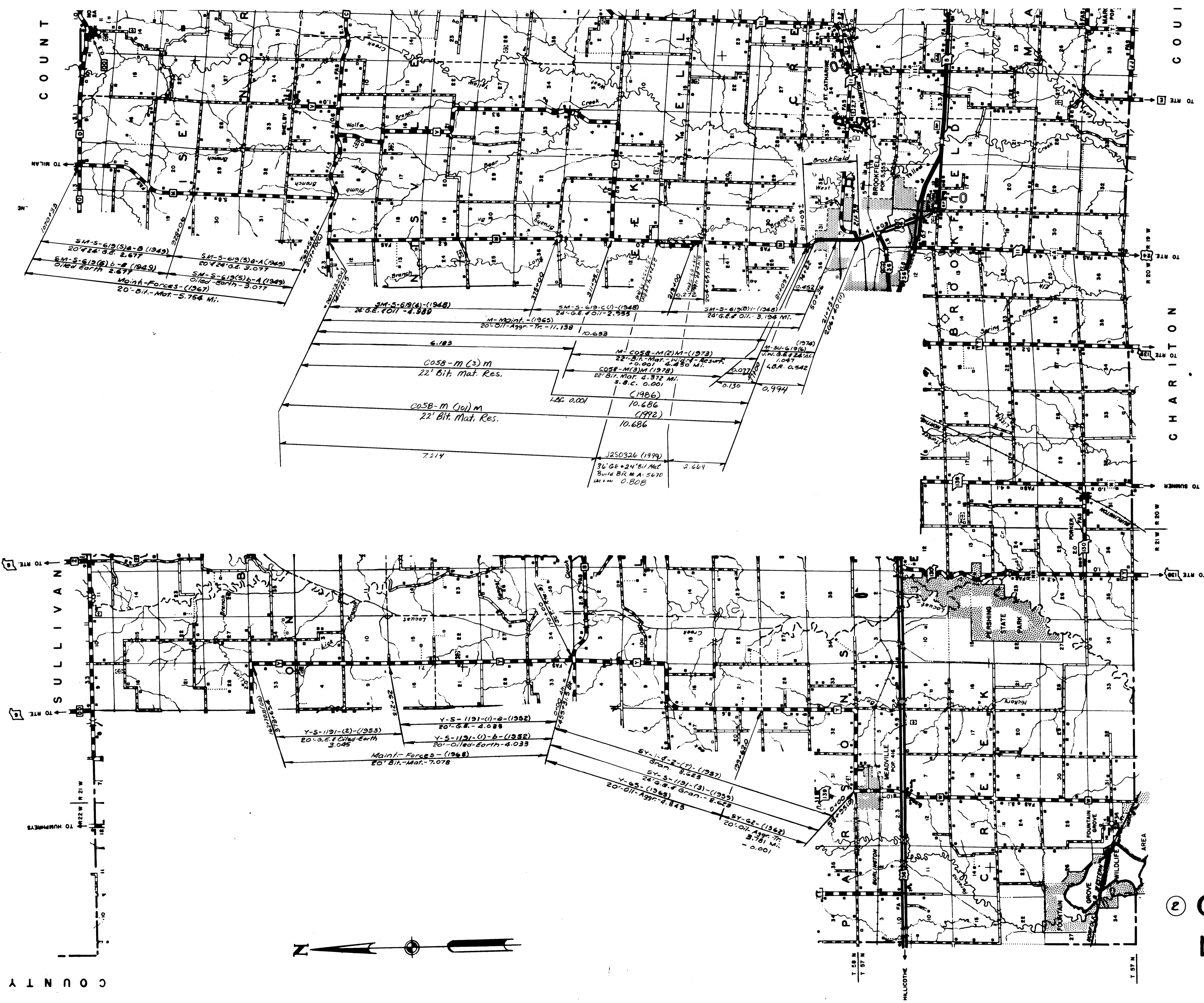


ROUTES  
C  
W  
DD  
JJ

② 058 SHEET 9 OF 13  
LINN



ROUTES  
F  
J  
O  
W  
W



COUNTY

SULLIVAN

COUNTY

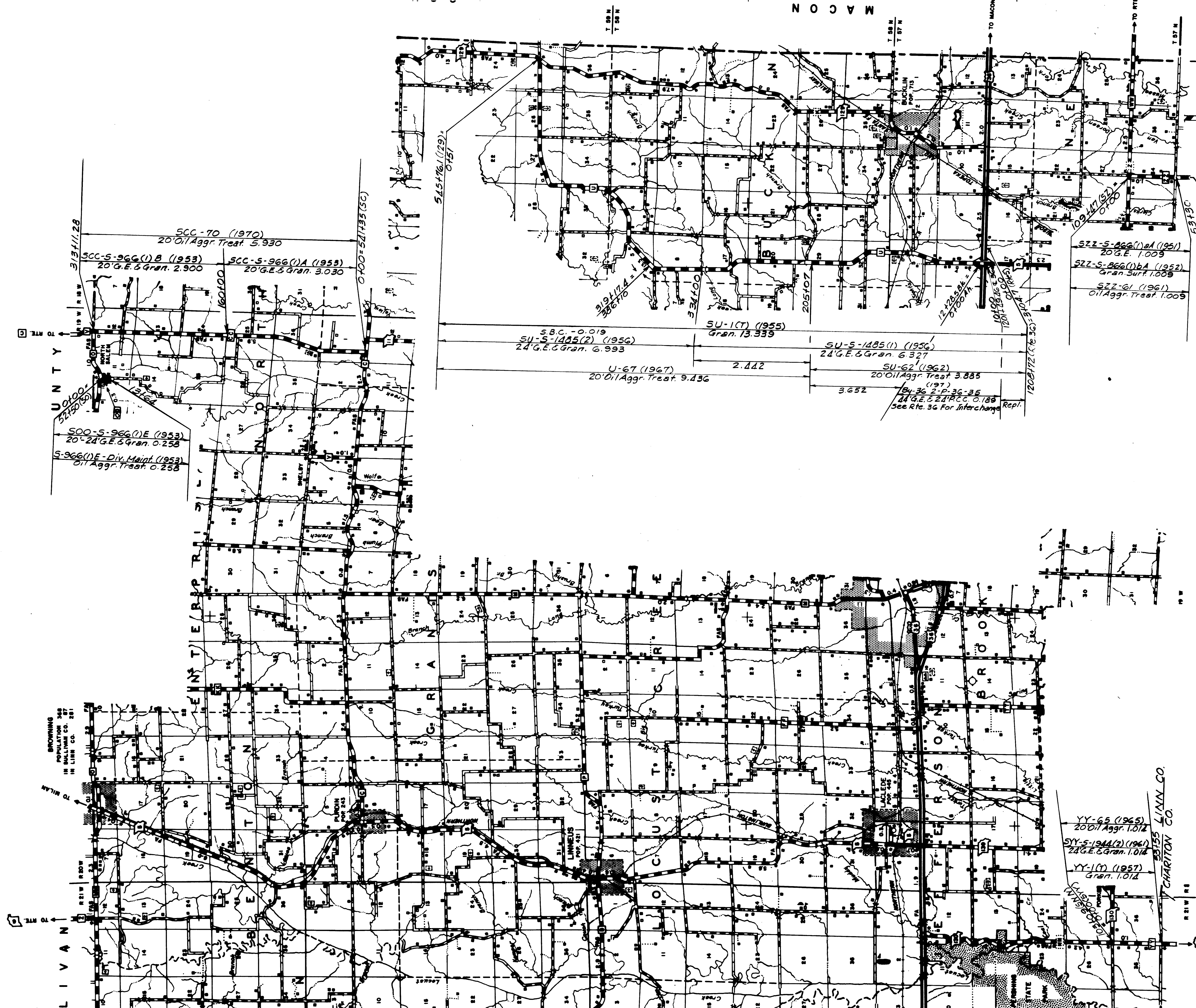
BOONE

CHARITON

ROUTE:  
M  
Y

② 058 SHEET // OF 13  
LINN CO.





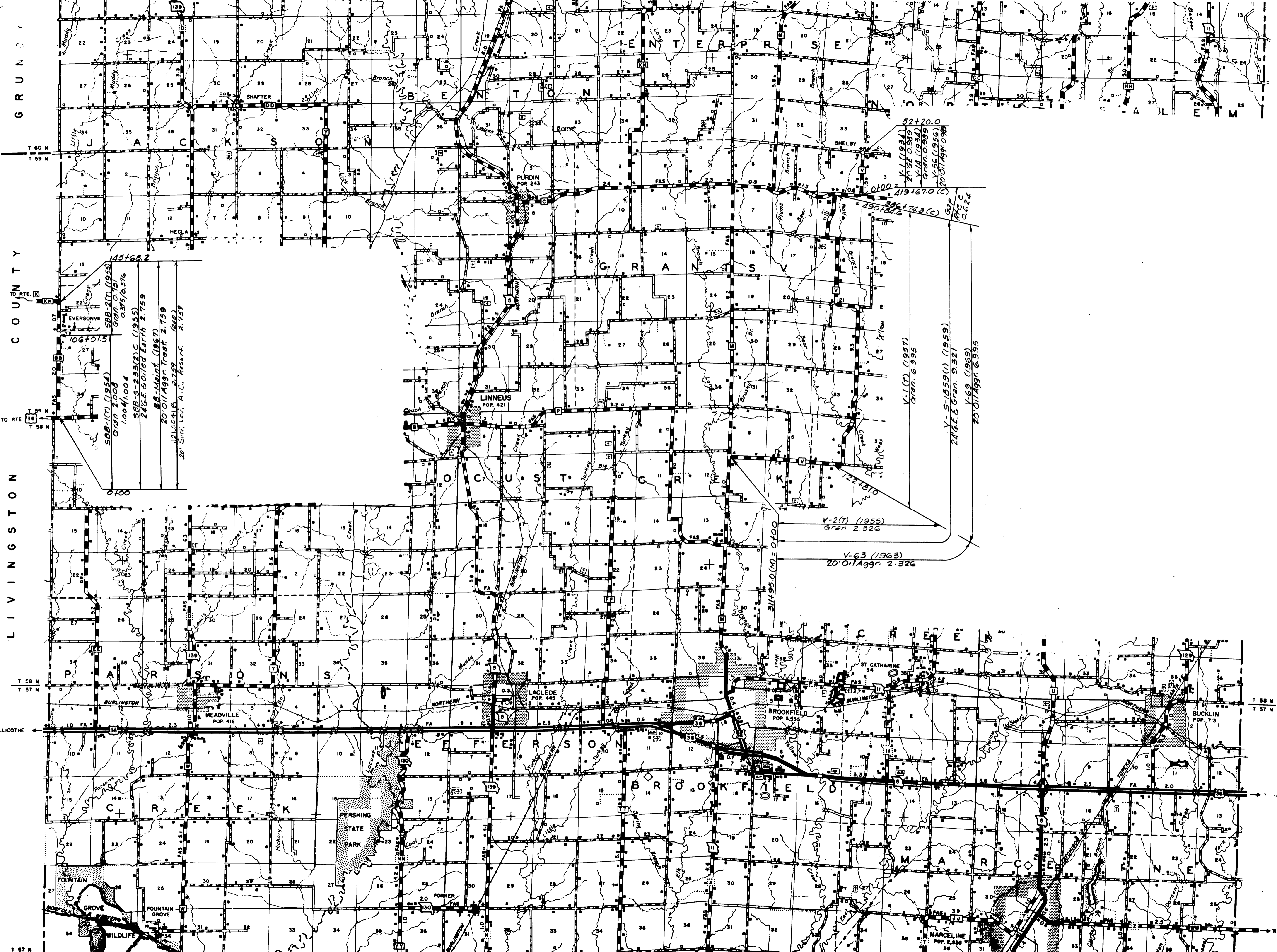
SCC-70 (1970)  
 20' Oil Aggr. Treat. 5.930  
 SCC-S-966(1)B (1953)  
 20' G.E. & Gran. 2.900  
 SCC-S-966(1)A (1953)  
 20' G.E. & Gran. 3.030  
 S-966(1)E-Div. Maint. (1953)  
 Oil Aggr. Treat. 0.258

S.B.C.-0.019  
 SU-S-1485(2) (1956)  
 24' G.E. & Gran. 6.993  
 SU-1 (1955)  
 Gran. 13.339  
 U-67 (1967)  
 20' Oil Aggr. Treat. 9.136  
 SU-S-1485(1) (1956)  
 24' G.E. & Gran. 6.327  
 SU-62 (1962)  
 20' Oil Aggr. Treat. 3.885  
 (197)  
 24-36 2-P-36-35  
 24' G.E. & 24' P.C.C. 0.189  
 See Rte. 36 For Interchange Repl.

SZZ-S-866(1)a (1951)  
 20' G.E. 1.009  
 SZZ-S-866(1)bA (1952)  
 Gran. Surf. 1.009  
 SZZ-61 (1961)  
 Oil Aggr. Treat. 1.009

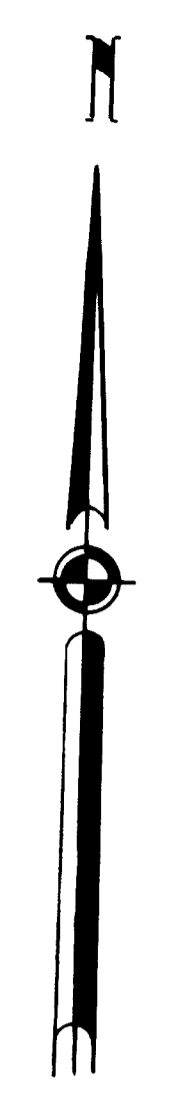
YY-65 (1965)  
 20' Oil Aggr. 1.012  
 SYY-S-1944(2) (1961)  
 24' G.E. & Gran. 1.012  
 YY-1 (1957)  
 Gran. 1.012

ROUTES  
 U  
 CC  
 OO  
 YY  
 ZZ



GRUNDY COUNTY  
LIVINGSTON COUNTY  
TO CHILLICOTHE  
TO ROUTE 139  
TO ROUTE 138  
TO ROUTE 137  
TO ROUTE 136  
TO ROUTE 135  
TO ROUTE 134  
TO ROUTE 133  
TO ROUTE 132  
TO ROUTE 131  
TO ROUTE 130  
TO ROUTE 129  
TO ROUTE 128  
TO ROUTE 127  
TO ROUTE 126  
TO ROUTE 125  
TO ROUTE 124  
TO ROUTE 123  
TO ROUTE 122  
TO ROUTE 121  
TO ROUTE 120  
TO ROUTE 119  
TO ROUTE 118  
TO ROUTE 117  
TO ROUTE 116  
TO ROUTE 115  
TO ROUTE 114  
TO ROUTE 113  
TO ROUTE 112  
TO ROUTE 111  
TO ROUTE 110  
TO ROUTE 109  
TO ROUTE 108  
TO ROUTE 107  
TO ROUTE 106  
TO ROUTE 105  
TO ROUTE 104  
TO ROUTE 103  
TO ROUTE 102  
TO ROUTE 101  
TO ROUTE 100  
TO ROUTE 99  
TO ROUTE 98  
TO ROUTE 97  
TO ROUTE 96  
TO ROUTE 95  
TO ROUTE 94  
TO ROUTE 93  
TO ROUTE 92  
TO ROUTE 91  
TO ROUTE 90  
TO ROUTE 89  
TO ROUTE 88  
TO ROUTE 87  
TO ROUTE 86  
TO ROUTE 85  
TO ROUTE 84  
TO ROUTE 83  
TO ROUTE 82  
TO ROUTE 81  
TO ROUTE 80  
TO ROUTE 79  
TO ROUTE 78  
TO ROUTE 77  
TO ROUTE 76  
TO ROUTE 75  
TO ROUTE 74  
TO ROUTE 73  
TO ROUTE 72  
TO ROUTE 71  
TO ROUTE 70  
TO ROUTE 69  
TO ROUTE 68  
TO ROUTE 67  
TO ROUTE 66  
TO ROUTE 65  
TO ROUTE 64  
TO ROUTE 63  
TO ROUTE 62  
TO ROUTE 61  
TO ROUTE 60  
TO ROUTE 59  
TO ROUTE 58  
TO ROUTE 57  
TO ROUTE 56  
TO ROUTE 55  
TO ROUTE 54  
TO ROUTE 53  
TO ROUTE 52  
TO ROUTE 51  
TO ROUTE 50  
TO ROUTE 49  
TO ROUTE 48  
TO ROUTE 47  
TO ROUTE 46  
TO ROUTE 45  
TO ROUTE 44  
TO ROUTE 43  
TO ROUTE 42  
TO ROUTE 41  
TO ROUTE 40  
TO ROUTE 39  
TO ROUTE 38  
TO ROUTE 37  
TO ROUTE 36  
TO ROUTE 35  
TO ROUTE 34  
TO ROUTE 33  
TO ROUTE 32  
TO ROUTE 31  
TO ROUTE 30  
TO ROUTE 29  
TO ROUTE 28  
TO ROUTE 27  
TO ROUTE 26  
TO ROUTE 25  
TO ROUTE 24  
TO ROUTE 23  
TO ROUTE 22  
TO ROUTE 21  
TO ROUTE 20  
TO ROUTE 19  
TO ROUTE 18  
TO ROUTE 17  
TO ROUTE 16  
TO ROUTE 15  
TO ROUTE 14  
TO ROUTE 13  
TO ROUTE 12  
TO ROUTE 11  
TO ROUTE 10  
TO ROUTE 9  
TO ROUTE 8  
TO ROUTE 7  
TO ROUTE 6  
TO ROUTE 5  
TO ROUTE 4  
TO ROUTE 3  
TO ROUTE 2  
TO ROUTE 1

82° 50'



ROUTES  
V  
BB

② 058 SHEET 13 OF 13  
LINN