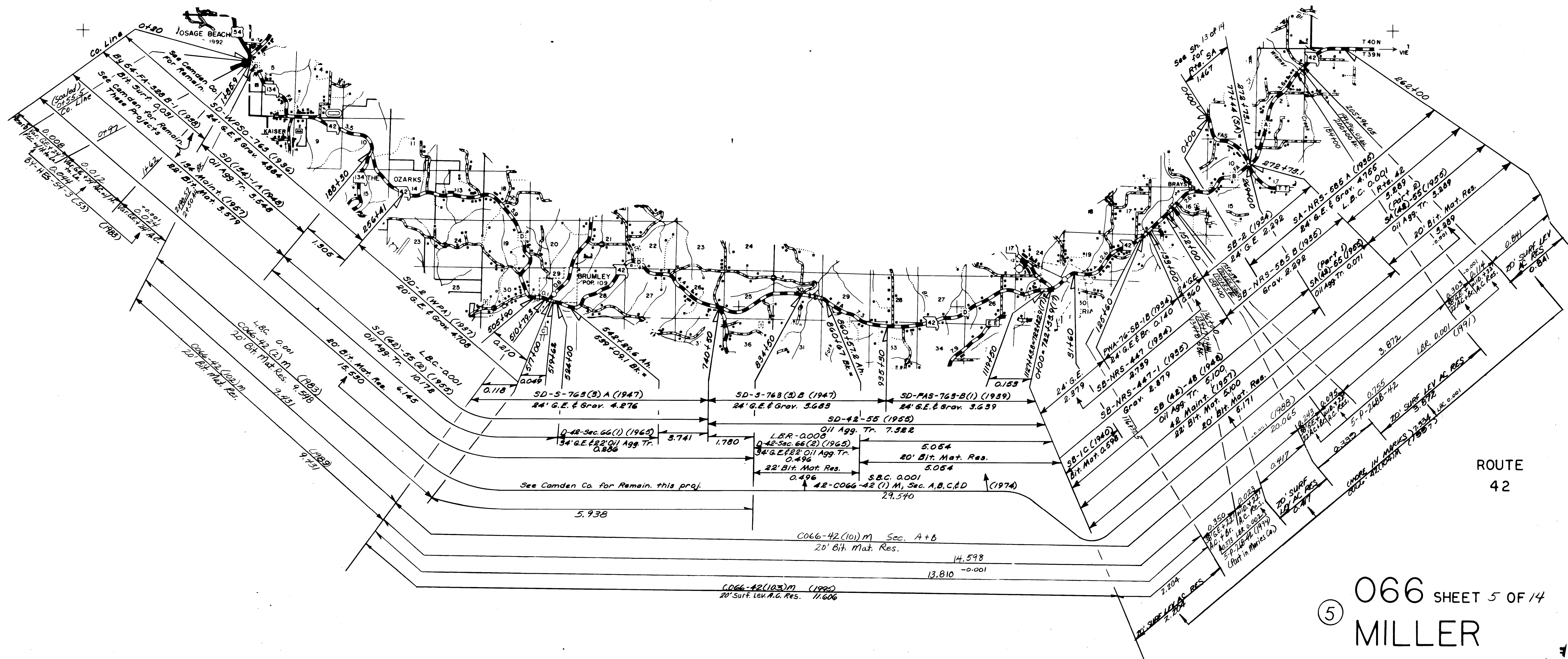


ROUTES
54

⑤ 066 SHEET 1 OF 14
MILLER

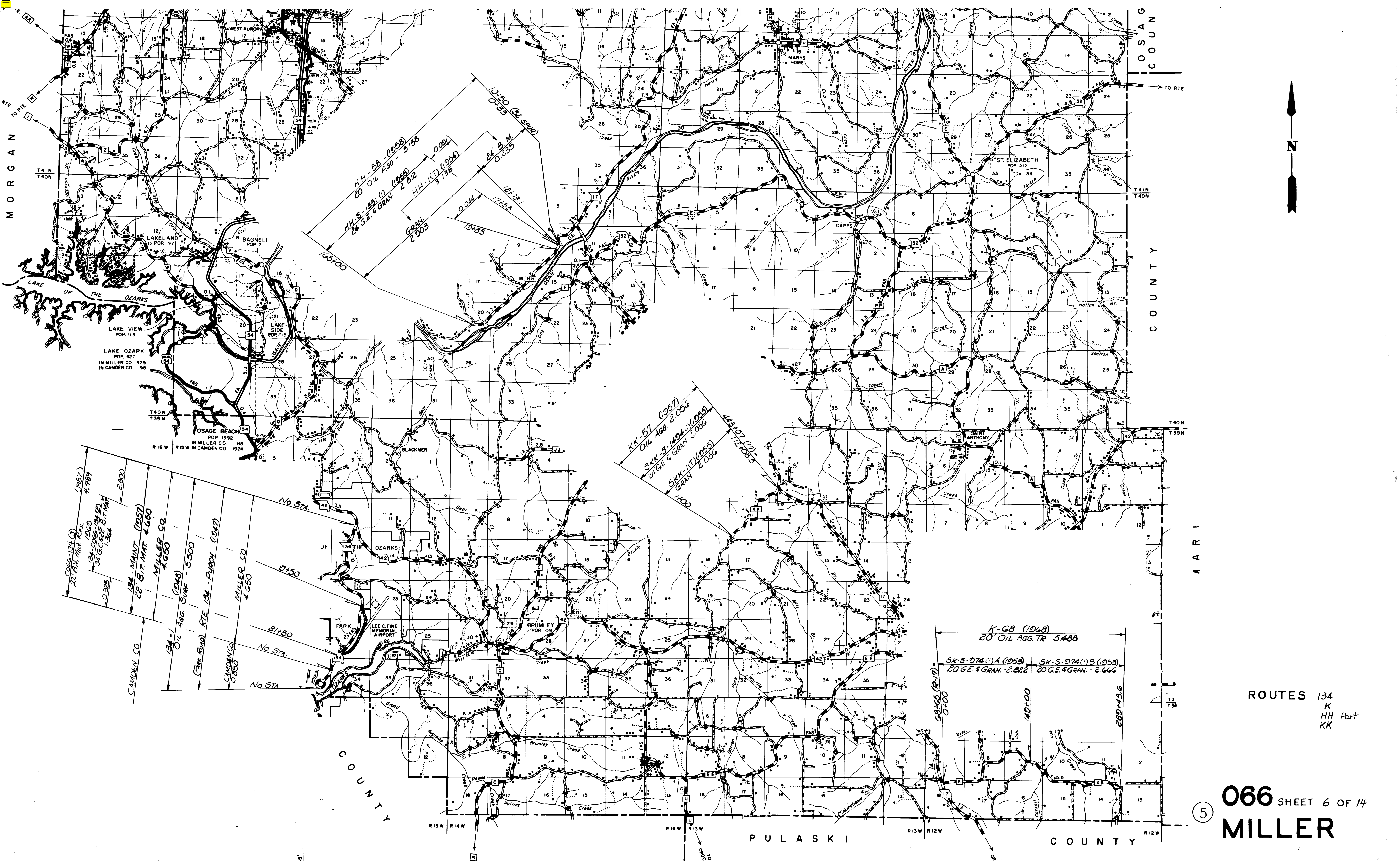


ROUTE
52
HH Part



ROUTE
42

5 066 SHEET 5 OF 14
MILLER



ROUTES
 K
 HH Part
 KK

066 SHEET 6 OF 14
MILLER

5

(1987)
 22 BIT MAT. RES.
 4,789

194-1060
 34 GE & GRAN. 1,364

194-MAINT (1957)
 22 BIT MAT. 4,650
 MILLER CO.

134-1 (1948)
 OIL AGG. SURF - 5,500

(Park Road) RTE 134 - PURCH (1947)

MILLER CO. 4,650

CAMDEN CO. 0,850

81,500

No STA.

10,150 (2-54-2)
 O-135

HH-58 (1958)
 20' OIL AGG - 5,736

HH-S-139 (1) (1955)
 24 GE & GRAN. 2,812

HH-1 (7) (1954)
 GRAN. 3,758

0,024

12,121.1

17,153

19,435

K-K-57 (1957)
 OIL AGG. 2,056

SK-K-S-1404 (1) (1955)
 24 GE & GRAN. 2,006

SK-K-1 (7) (1955)
 GRAN. 2,006

1,400

44,107 (12-5-5)
 12,705.5

K-68 (1968)
 20' OIL AGG. TR. 5,488

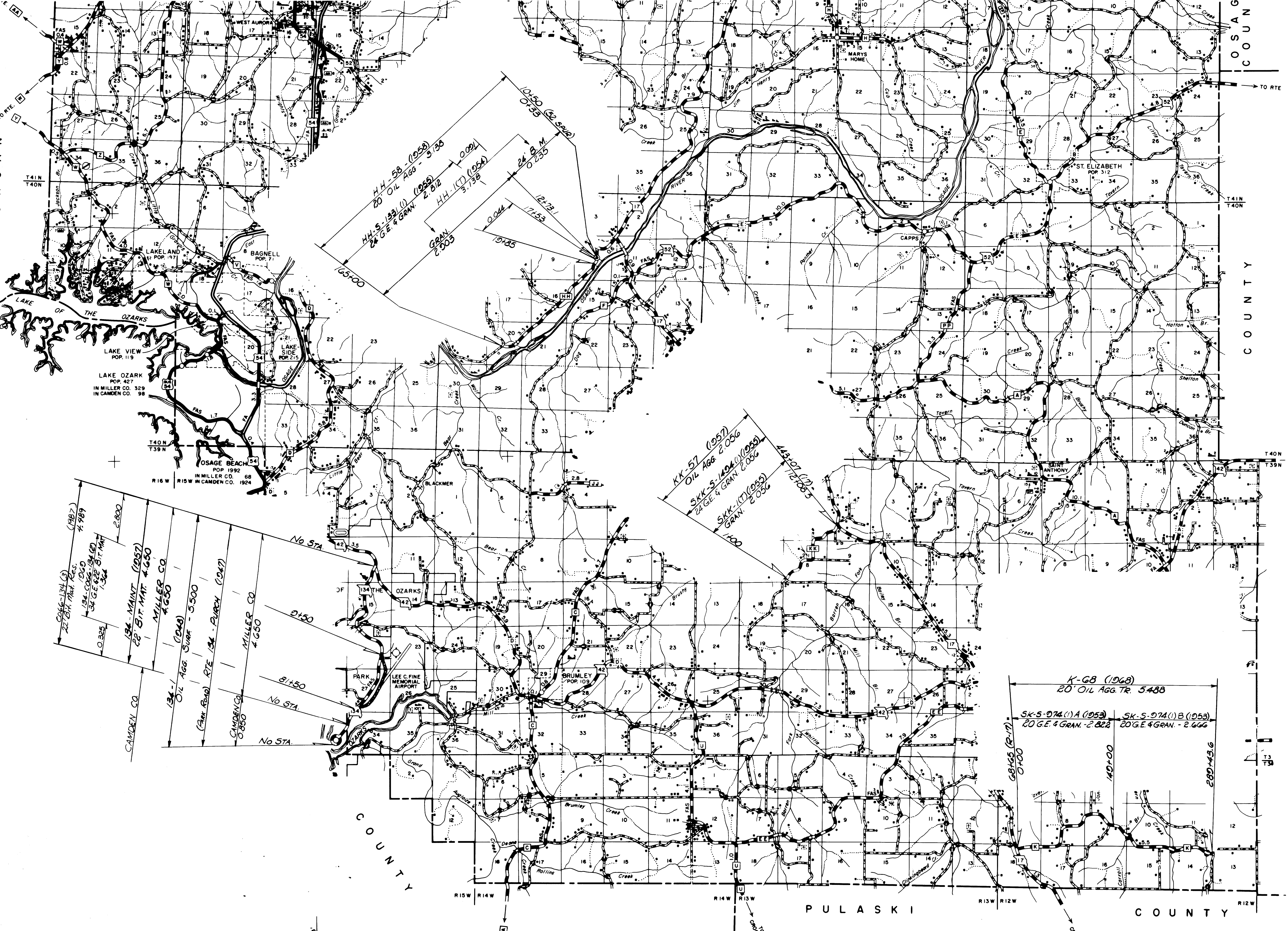
SK-S-074 (1) A (1953)
 20 GE & GRAN. - 2,822

SK-S-074 (1) B (1953)
 20 GE & GRAN. - 2,666

68,425 (2-17)
 0,700

140,100

289,43.6



MORGAN

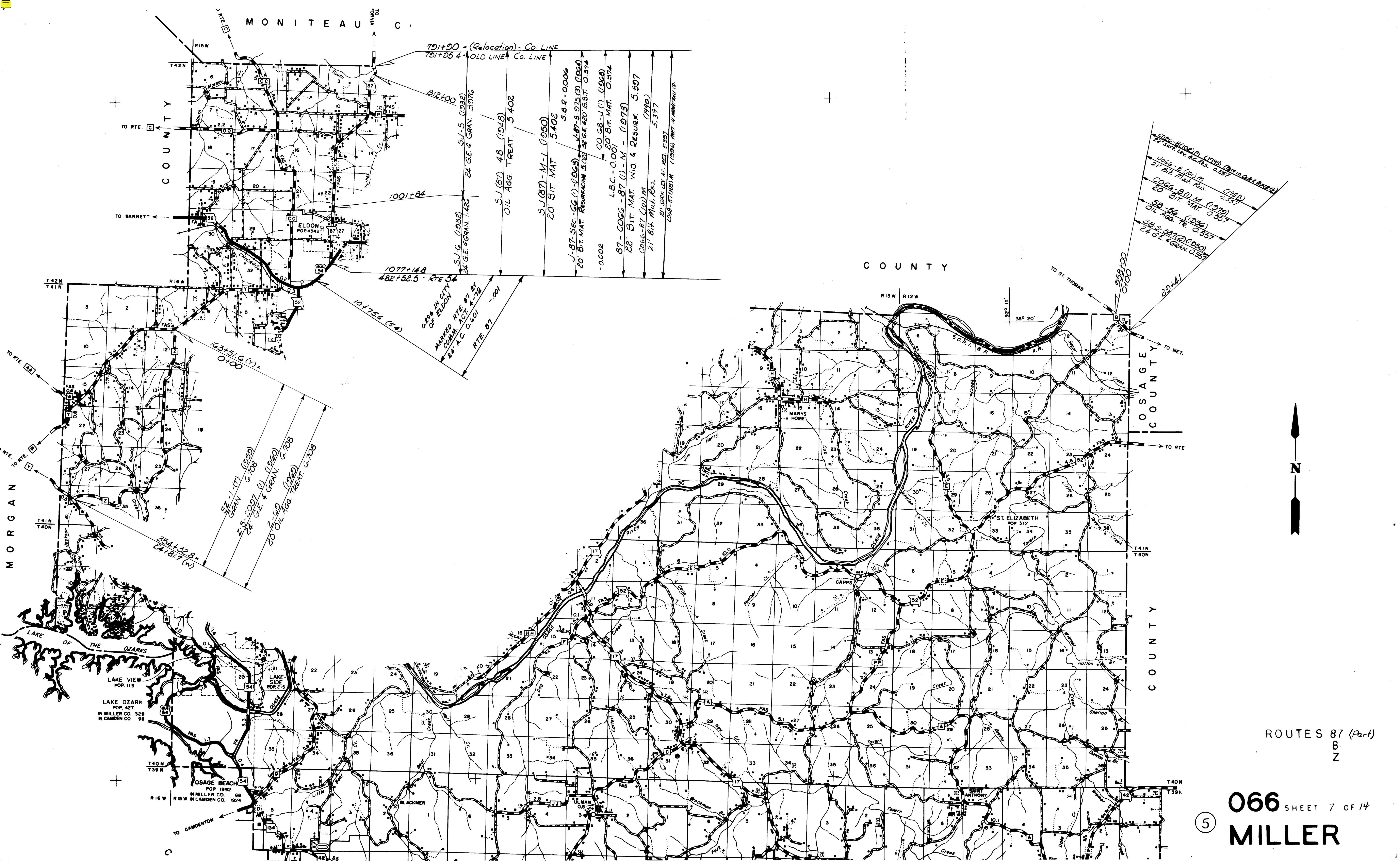
COSANG
 COUNTY

AARI

COUNTY

PULASKI

COUNTY



MONITEAU CO.

COUNTY

COUNTY

COUNTY

COUNTY



791+90 = (Relocation) - Co. LINE
 791+95.4 OLD LINE Co. LINE
 812+00
 S.J. 5 (1932)
 24' G.E. & GRAN. 5976
 S.J. (87) 48 (1948)
 OIL AGG. TREAT. 5,402
 S.J. (87) - M-1 (1950)
 20' BIT. MAT. 5,402
 S.B.R. 0006
 J-87-SEC. -GG (1-1063)
 20' BIT. MAT. RESURFACING 502' 36" G.E. 420' B.S.T. 0.574
 -0002
 CO. 68-J (1) (1968)
 20' BIT. MAT. 0.574
 L.B.C. -0001
 87 - COGG - 87 (1) - M - (1973)
 20' BIT. MAT. WID & RESURF. 5,397
 COGG-87 (101) M
 21' BIT. Mat. Res.
 21' SURF. LEX. A.C. RES. 5,397
 COGG-87 (102) M (1996) PAVT. IN MAINTENANCE CO.

606-8 (102) M (1996) (Arvin Lake Bridge)
 22' SURF. LEX. A.C. RES. 0.557
 606-8 (101) M
 21' BIT. Mat. Res. (1980)
 0.557
 COGG-87 (1) M (1979)
 20' BIT. MAT. 0.557
 SB-86 (1986)
 OIL AGG. TR. 0.557
 SB-8-887(2) (1980)
 24' G.E. & GRAN. 0.557

1077+14.8
 482+52.5 - RTE 54
 101756 (54)
 0.82% IN CITY OF ELDON
 MARKED RTE 87 BY COMM. ACT. # 78
 24' A.C. 0.601
 RTE 87 - 001

163+51.6 (Y) = 0100
 354+32.8 = 24+9.7 (W)
 S2-1-17 (1939)
 GRAN. 6708
 24' G.E. & GRAN. 6708
 20' OIL AGG. TREAT. 6708

ROUTES 87 (Part)
B
Z

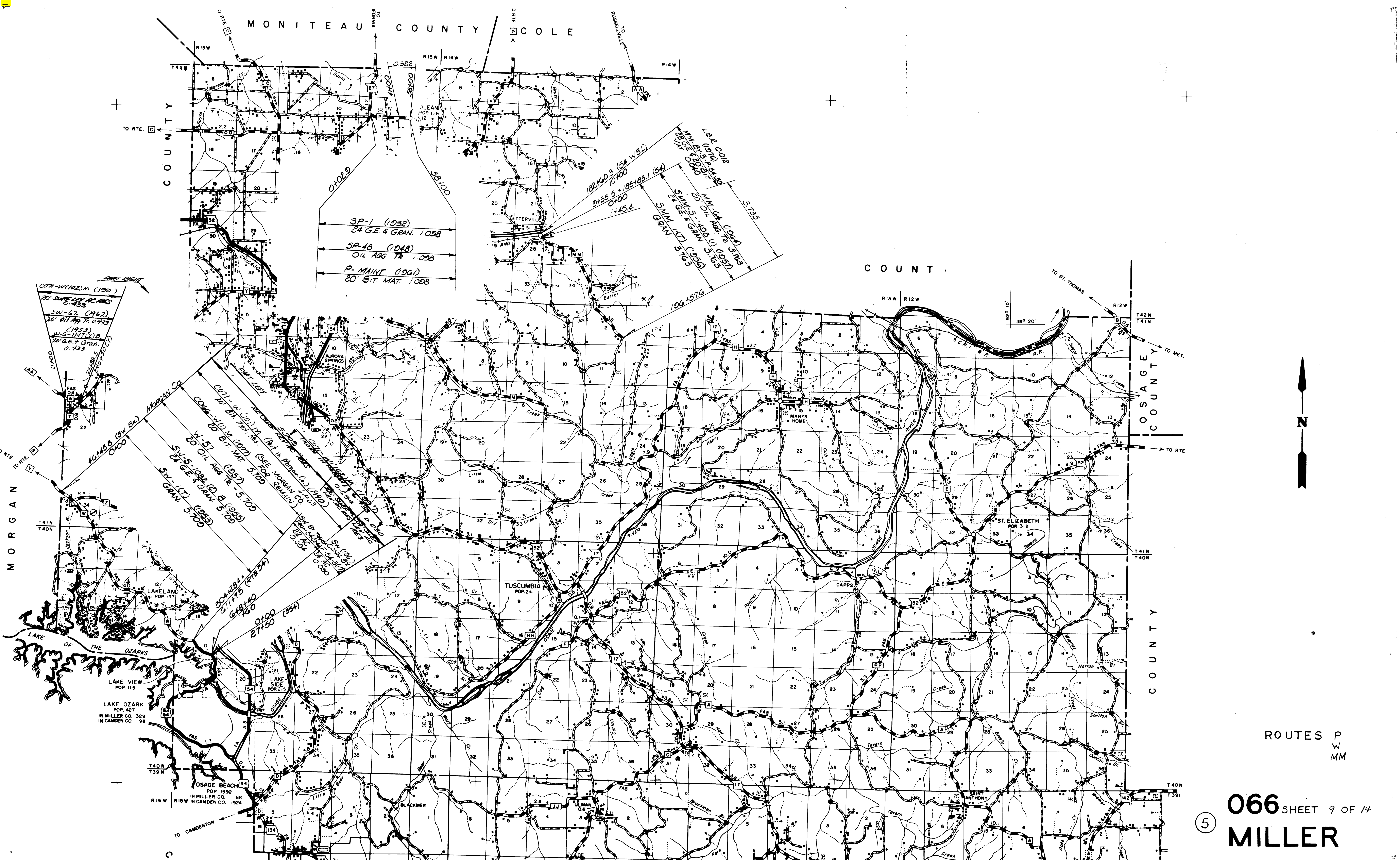
066 SHEET 7 OF 14
MILLER

5

LAKE VIEW
 POP. 119
 LAKE OZARK
 POP. 427
 IN MILLER CO. 329
 IN CAMDEN CO. 98
 OSAGE BEACH
 POP. 1992
 IN MILLER CO. 68
 IN CAMDEN CO. 1924

ST. ELIZABETH
POP. 312

TO BARNETT
 TO ST. THOMAS
 TO MET.
 TO CAMDENTON



0071-W1102M (1900)
20' SURV. 24' AC. 1000
SW-62 (1962)
20' Oil Agg. Tr. 0.433
(1953)
W-S-114(2)C
20' G.E.T. Gran.
0.433

SP-1 (1932)
24' G.E. & GRAN. 1.008
SP-48 (1948)
OIL AGG. TR. 1.008
P-MAINT (1961)
20' BIT. MAT. 1.008

182+60.3 (54 W.B.L.)
0+35.5 + 88+83.1 (56)
0+00
1+45.4
S.M.M.S. - 1008.0 (1952)
20' OIL AGG. TR. 5.765
S.M.M. (17) (1955)
S.M.M. GRAN. 5.765
L.B.R. CO. 18
(1916)
M.M.B. 5-5-54-54-54
20' OIL AGG. TR. 5.765
3-735

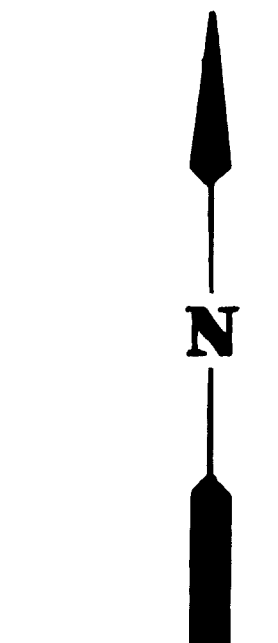
0071-W1102M (1900)
20' SURV. 24' AC. 1000
SW-62 (1962)
20' Oil Agg. Tr. 0.433
(1953)
W-S-114(2)C
20' G.E.T. Gran.
0.433

0071-W1102M (1900)
20' SURV. 24' AC. 1000
SW-62 (1962)
20' Oil Agg. Tr. 0.433
(1953)
W-S-114(2)C
20' G.E.T. Gran.
0.433

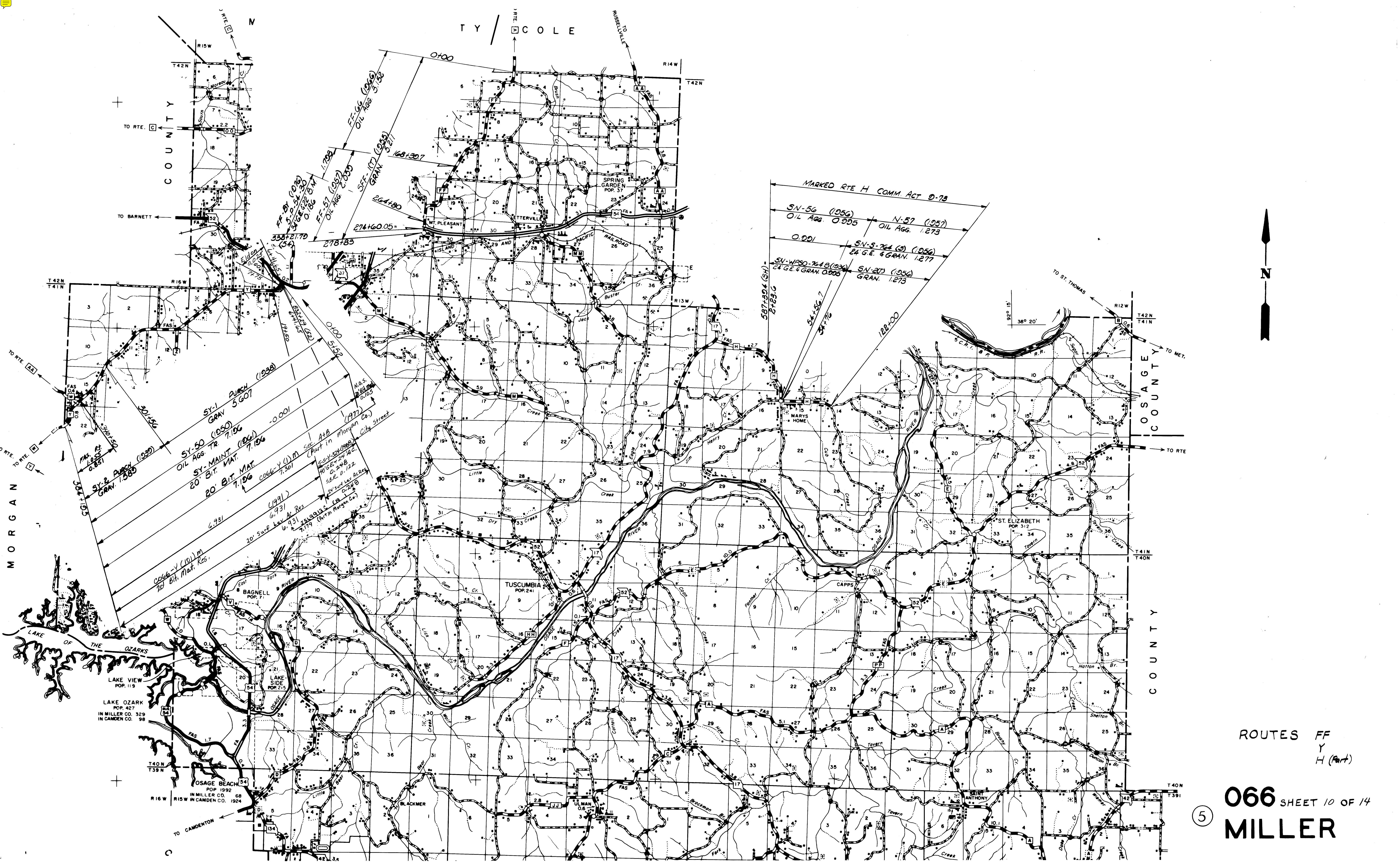
0071-W1102M (1900)
20' SURV. 24' AC. 1000
SW-62 (1962)
20' Oil Agg. Tr. 0.433
(1953)
W-S-114(2)C
20' G.E.T. Gran.
0.433

0071-W1102M (1900)
20' SURV. 24' AC. 1000
SW-62 (1962)
20' Oil Agg. Tr. 0.433
(1953)
W-S-114(2)C
20' G.E.T. Gran.
0.433

0071-W1102M (1900)
20' SURV. 24' AC. 1000
SW-62 (1962)
20' Oil Agg. Tr. 0.433
(1953)
W-S-114(2)C
20' G.E.T. Gran.
0.433



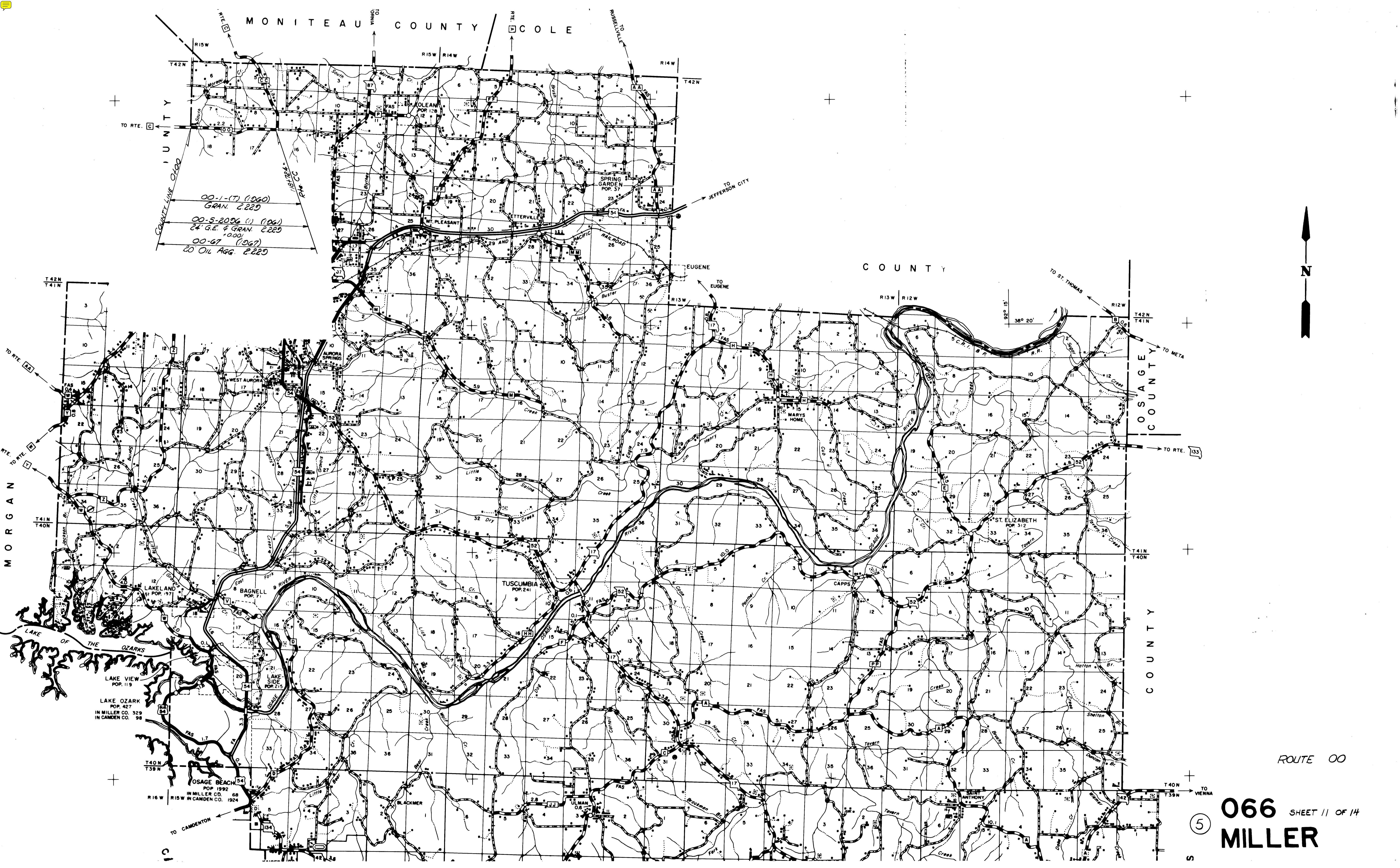
ROUTES P
W
MM



ROUTES FF
Y
H (Part)

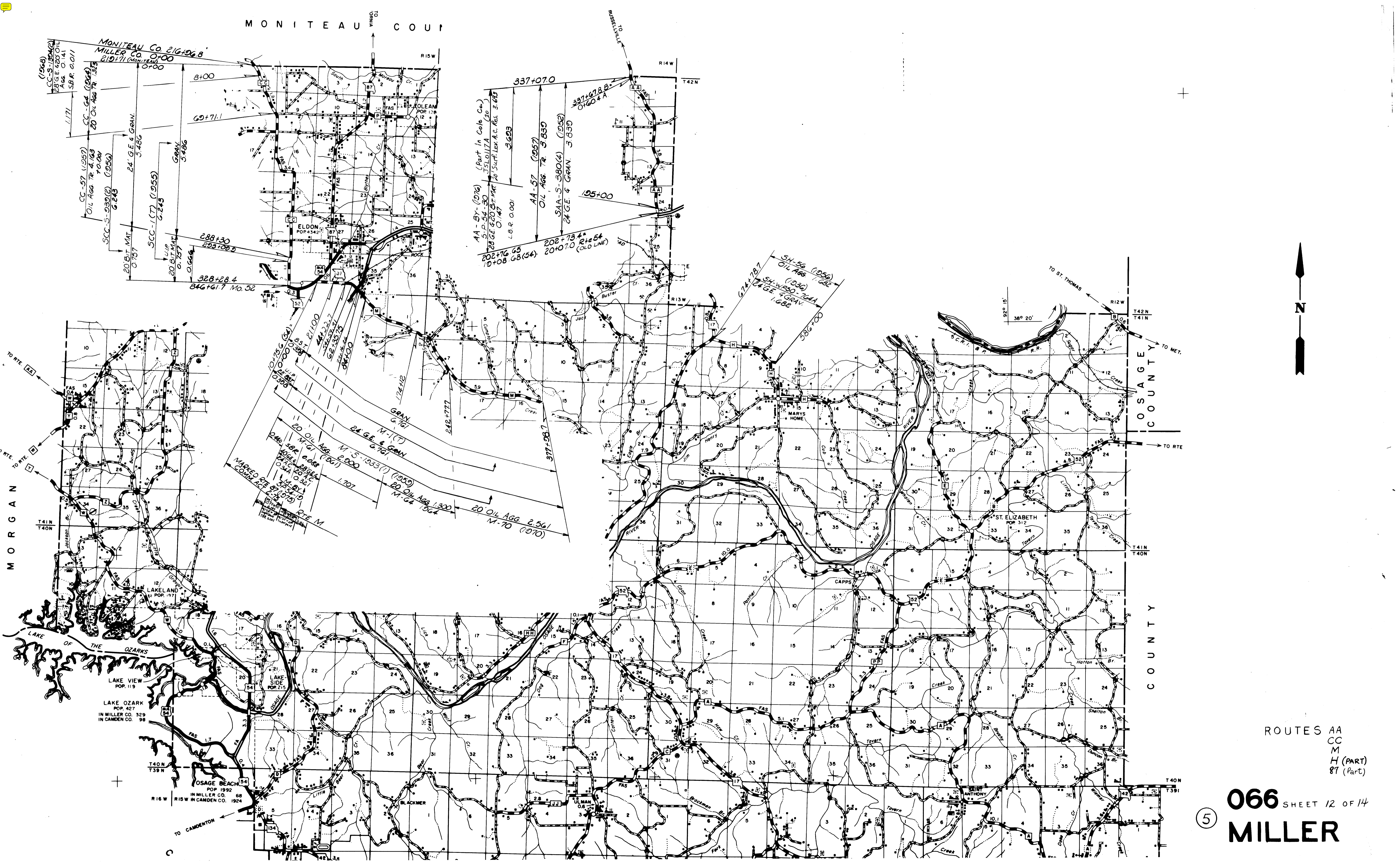
066 SHEET 10 OF 14
MILLER

5



00-1-(7) (1960)
 GRAN. 2,229
 00-5-2006 (1) (1961)
 24 G.E. & GRAN. 2,229
 0000
 00-67 (1967)
 20 Oil Agg. 2,229

ROUTE 00
 5
 066 SHEET 11 OF 14
 MILLER



MONITEAU Co. 216-26.8
 MILLER Co. 0700
 219+71 (MONITEAU)

CC-57 (1957)
 OIL AGG. TR. 4.163
 70.004
 SCC-5-939(2) (1956)
 6.243

20 BIT. MAT. 0.757
 24' G.E. & GRAN. 5.486
 SCC-1(17) (1955)
 6.243

20 BIT. MAT. 0.757
 20 BIT. MAT. 0.757
 0.666

288+30
 293+00.0

388+28.4
 346+61.7 Mo. 52

337+07.0

AA-57 (1957)
 OIL AGG. TR. 3.830

SAA-S-380(4) (1952)
 24' G.E. & GRAN. 3.830

337+678.8
 0160.4A

105+00

202+76.65
 19+08.68(54)

202+73.4
 20+07.0 Rte 54
 (OLD LINE)

SH-56 (1956)
 OIL AGG. 1.682

SH-WOOD-704A
 24' G.E. & GRAN. 1.682

586+00

20 OIL AGG. 2.000
 M-70 (1970)

24' G.E. & GRAN. 1.707

M-5-1033(1) (1959)
 20 OIL AGG. 1.300
 M-70 (1970)

20 OIL AGG. 2.561
 M-70 (1970)

MARKED BY
 COMM. REC. 8-25-57

MORGAN

TO RTE. [A]
 TO RTE. [M]
 TO RTE. [H]

LAKE OF THE OZARKS

LAKE VIEW
 POP. 119

LAKE OZARK
 POP. 427
 IN MILLER CO. 329
 IN CAMDEN CO. 98

OSAGE BEACH
 POP. 1992
 IN MILLER CO. 68
 IN CAMDEN CO. 1924

BLACKMER

ULMAN

TO CAMDEN

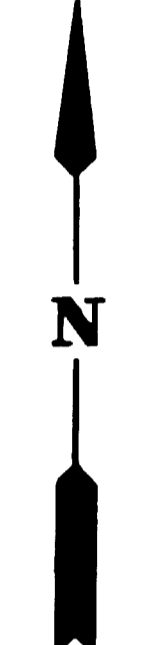
TO ST. THOMAS

TO MET.

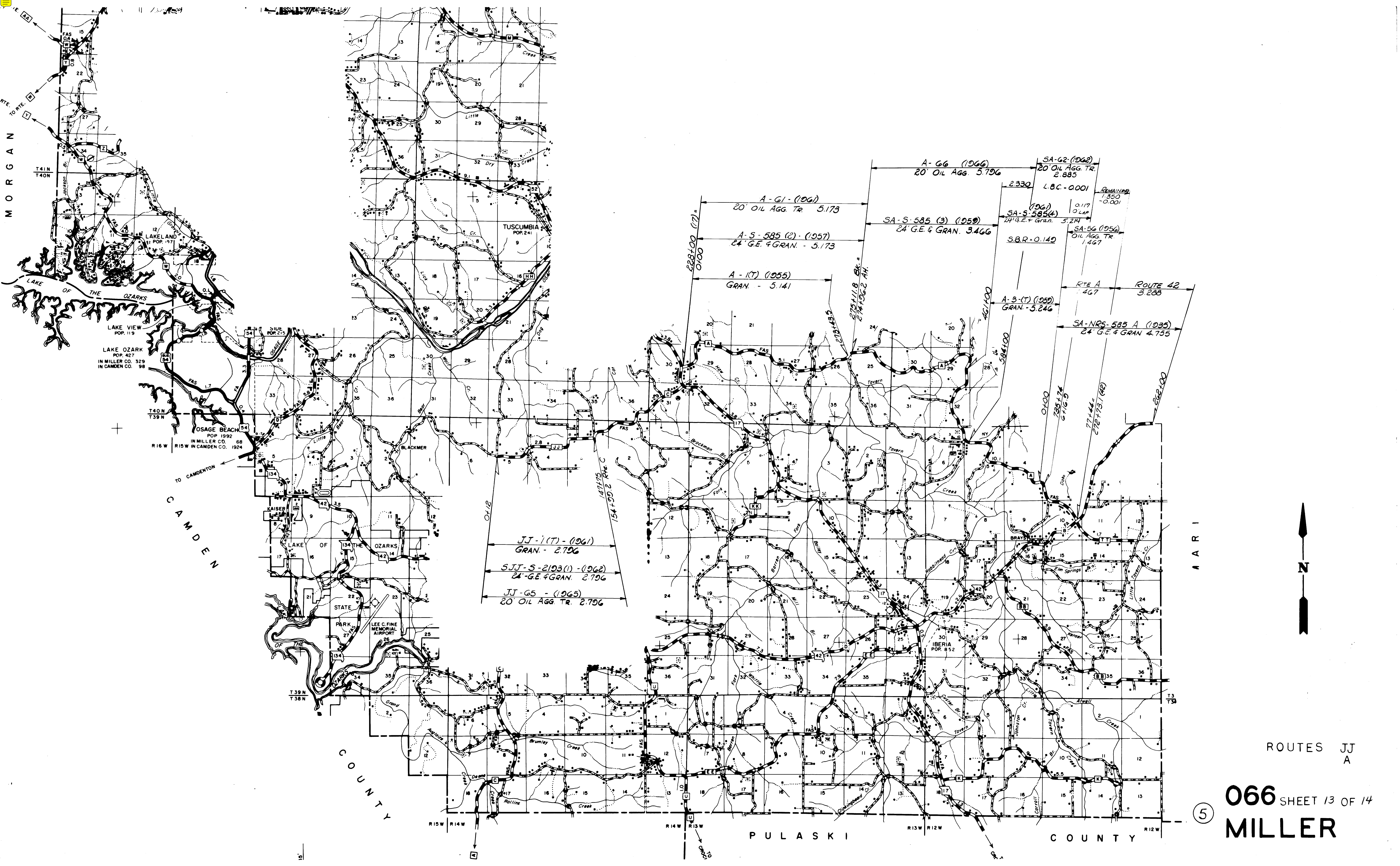
COSAGE COUNTY

COUNTY

COUNTY



ROUTES AA
 CC
 M
 H (PART)
 87 (PART)



MORGAN

CAMDEN

COUNTY

PULASKI

COUNTY

5

ROUTES JJ
A

066 SHEET 13 OF 14
MILLER



JJ-1(T)-(1961)
GRAN. - 2,796

SJJ-S-2193(1)-(1962)
24' G.E. & GRAN. 2,796

JJ-65-(1965)
20' OIL AGG. TR. 2,796

A-66 (1966)
20' OIL AGG. 3,796

SA-G2 (1962)
20' OIL AGG. TR. 2,885

A-G1-(1961)
20' OIL AGG. TR. 5,173

SA-S-585 (3) (1959)
24' G.E. & GRAN. 3,466

A-S-585 (2) (1957)
24' G.E. & GRAN. - 5,173

A-1(T) (1955)
GRAN. - 5,141

A-3-(T) (1959)
GRAN. - 5,246

SA-56 (1956)
OIL AGG. TR. 1,467

SA-NRS-585 A (1935)
24' G.E. & GRAN. 4,755

L.B.C.-0.001

SA-S-585(4) (1961)
24' G.E. & GRAN. 5,214

S.B.R.-0.140

REMAINING
1,350
-0.001

0.117
0.140

2,330

228,100 (17) =
0,100

273,118 Sk. =
274,562 AH.

40,100

785,174
6,716.9

77,444
2,727,737 (48)

268,100

ROUTE 42
3,288

RTE A
467

LAKE VIEW
POP. 119

LAKE OZARK
POP. 427
IN MILLER CO. 329
IN CAMDEN CO. 98

OSAGE BEACH
POP. 1992
IN MILLER CO. 68
IN CAMDEN CO. 1924

LAKE OF THE OZARKS
POP. 137

LAKE OF THE OZARKS
POP. 215

IBERIA
POP. 852

TUSCUMBIA
POP. 241

LEE C. FINE
MEMORIAL
AIRPORT

STATE
PARK

T 39 N
T 38 N

T 40 N
T 39 N

T 41 N
T 40 N

R 16 W
R 15 W

R 14 W
R 13 W

R 13 W
R 12 W

R 12 W

TO CAMDENTON

06600

