

COUNTY

COUNTY

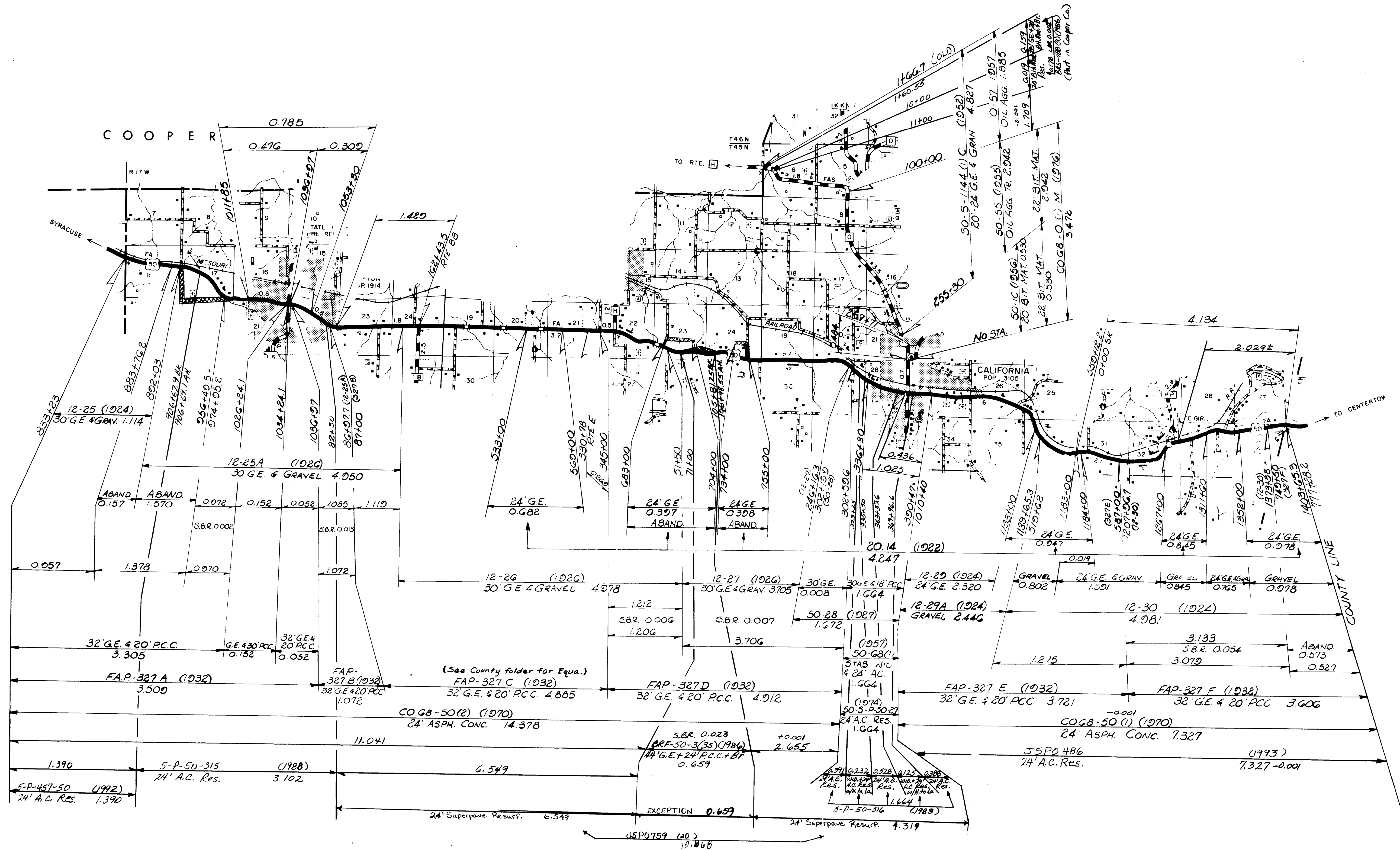


⑤ 068 SHEET 1 OF 7
 MONITEAU

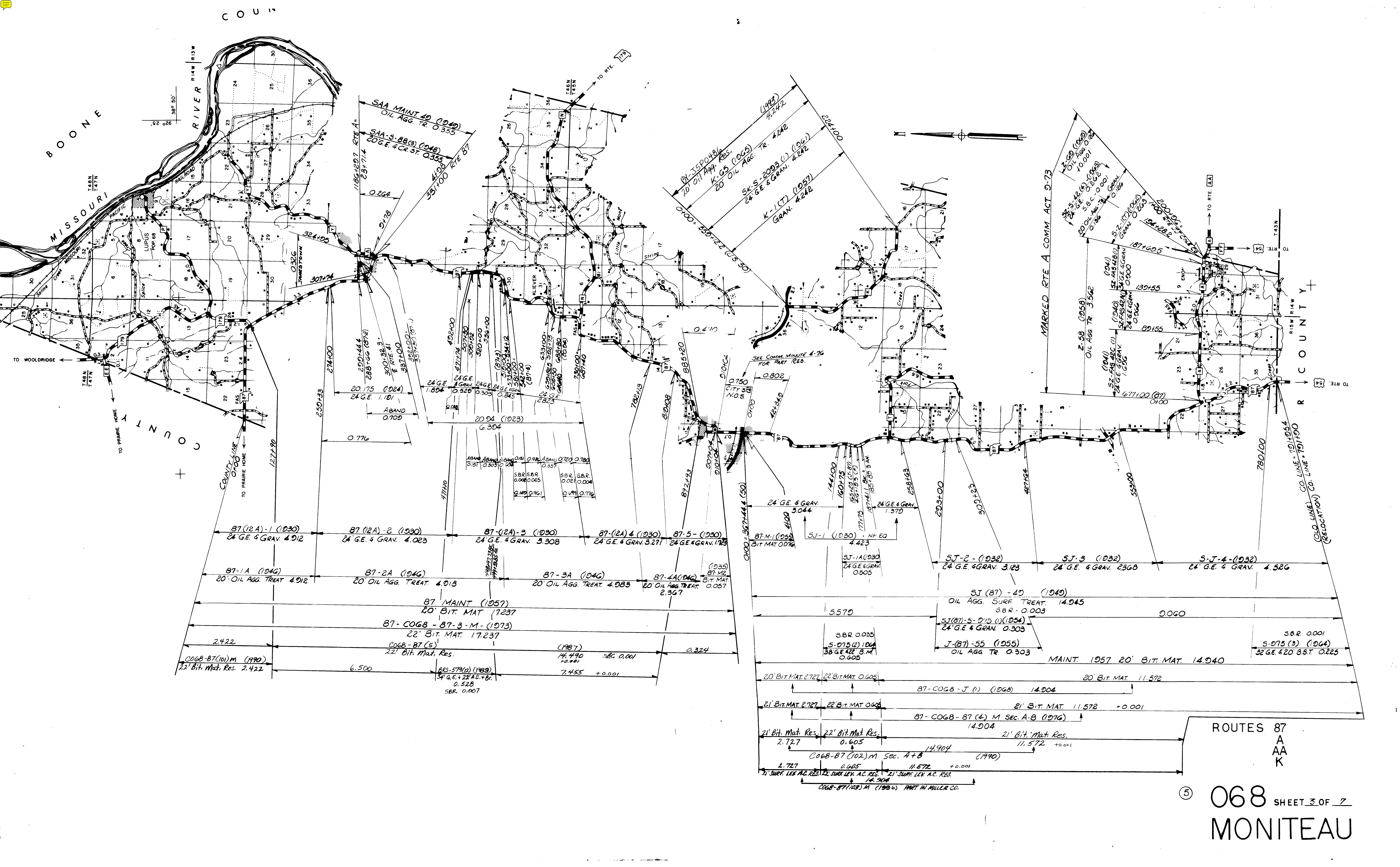
MONITEAU Co. 216+06.8 BK
 MILLER Co. 0100 AH

PART OF THIS PROJECT IN MILLER Co
 CC-5-1904 (2) SEC. A (1968)

ROUTES
 5
 H
 CC
 HH
 MM
 W

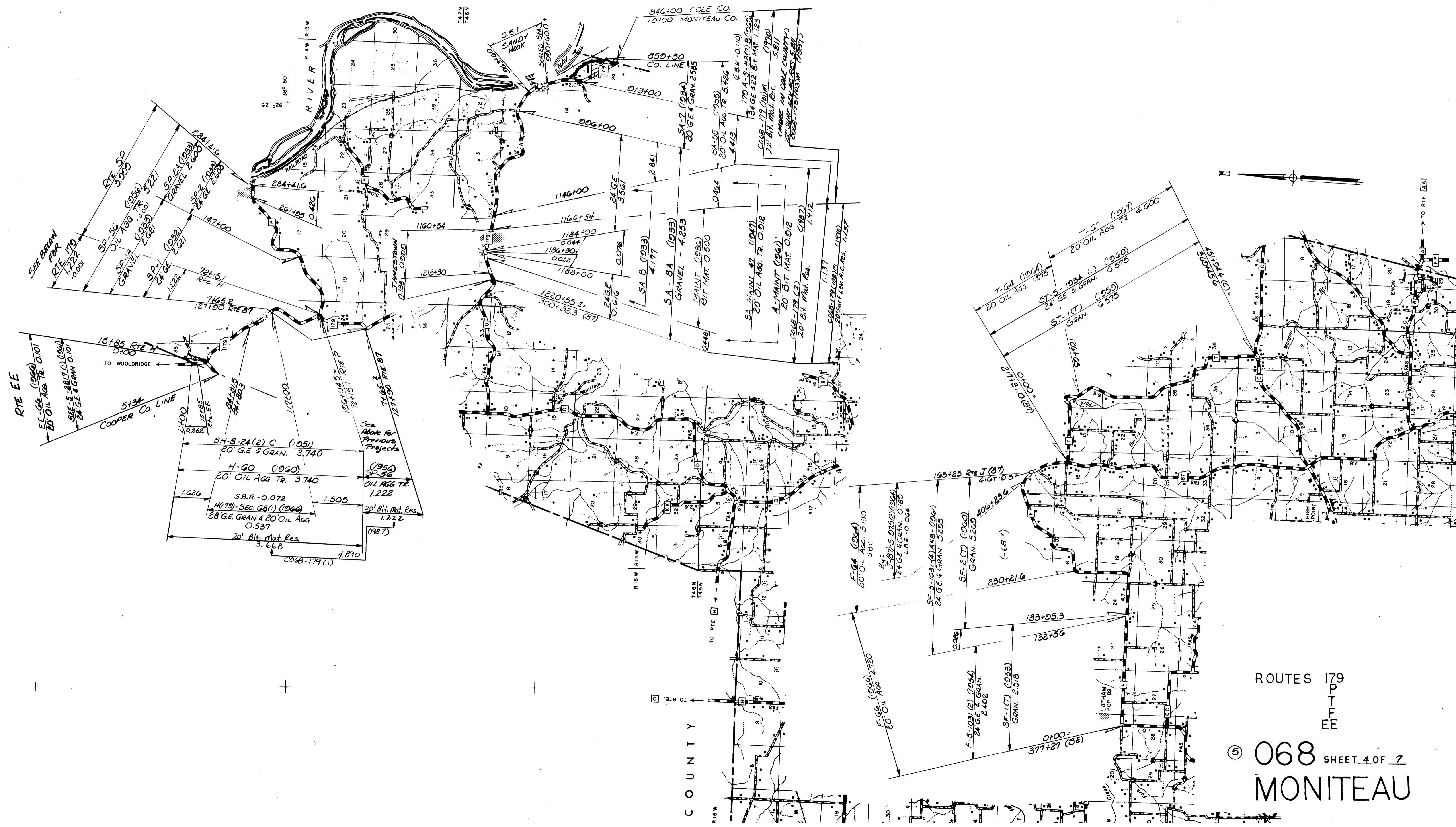


ROUTES . 50
0

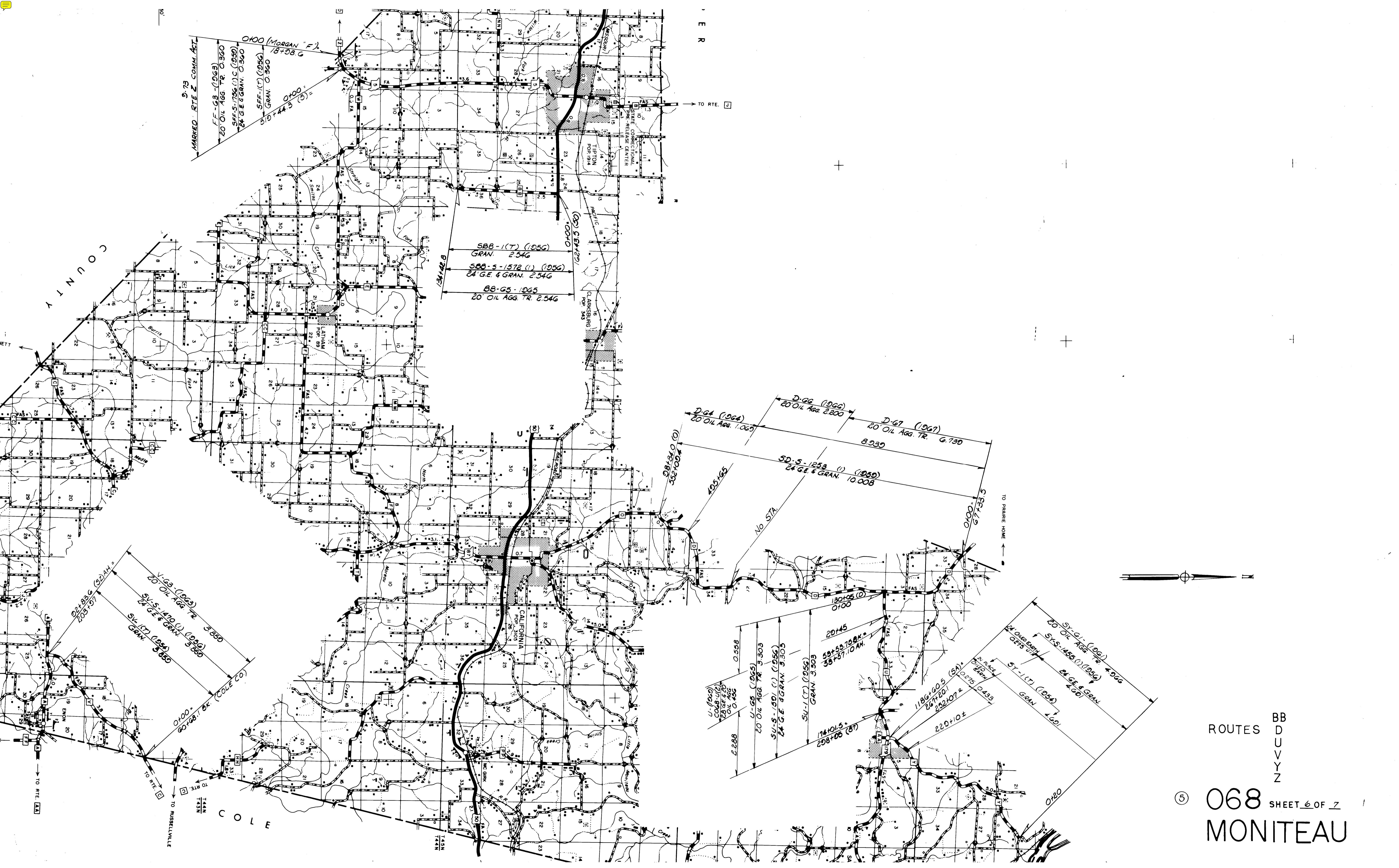


87(12A)-1 (1930) 24' G.E. & GRAV. 4.912	87(12A)-2 (1930) 24' G.E. & GRAV. 4.023	87(12A)-3 (1930) 24' G.E. & GRAV. 3.308	87(12A)-4 (1930) 24' G.E. & GRAV. 3.271	87-5- (1930) 24' G.E. & GRAV. 1.725
87-1A (1946) 20' OIL AGG. TREAT. 4.912	87-2A (1946) 20' OIL AGG. TREAT. 4.913	87-3A (1946) 20' OIL AGG. TREAT. 4.933	87-4A (1946) 20' OIL AGG. TREAT. 2.367	(1935) 87-M-2 BIT. MAT. 0.057
87 MAINT (1957) 20' BIT. MAT. 7.237				
87-COGB-87-3-M- (1973) 22' BIT. MAT. 17.237				
COGB-87(5) 22' Bit. Mat. Res. 14.490 SBR 0.001				
2.422 COGB-87(10)M (1990) 22' Bit. Mat. Res. 2.422	6.500 87-579(D) (1989) 34' G.E. & 22' A.B. + B.C. 0.528 SBR 0.007	7.455 (1987) 14.490 SBR 0.001	+0.001	0.324
20' BIT. MAT. 2.727				
87-COGB-J (1) (1968) 14.904				
21' BIT. MAT. 2.727				
21' BIT. MAT. 0.605				
87-COGB-87(4) M Sec. A-B (1976) 14.904				
21' BIT. Mat. Res. 2.727				
22' Bit. Mat. Res. 0.605				
COGB-87(102)M Sec. A+B (1990) 14.904				
21' SURF. LEV. AC. RES. 2.727				
22' SURF. LEV. AC. RES. 0.605				
21' SURF. LEV. AC. RES. 11.572				
COGB-87(103)M (1996) PART IN MILLER CO. 11.572				
20' BIT. MAT. 2.727				
22' BIT. MAT. 0.605				
20' BIT. MAT. 11.572				
87-M-1 (1953) BIT. MAT. 0.076				
SJ-1 (1930) - NF EQ 4.423				
SJ-1A (1930) 24' G.E. & GRAV. 0.505				
SJ (87) - 4D (1940) OIL AGG. SURF. TREAT. 14.945 SBR 0.003				
5.579				
SJ(87)-5-215 (1) (1954) 24' G.E. & GRAV. 0.303				
J(87)-55 (1955) OIL AGG. TR. 0.303				
MAINT. 1957 20' BIT. MAT. 14.940				
SBR 0.001				
S-975 (3) (1964) 32' G.E. & 20' B.S.T. 0.225				

COUNTY



ROUTES 179
 P
 T
 T
 E
 E
 ⑤ 068 SHEET 4 OF 7
 MONITEAU



9-73
 MARKED RTE 2 COMM. ACT.
 FF-63 (1963)
 20 OIL AGG. TR. 0.360
 SFF-S-1756 (1) (1959)
 24 G.E. & GRAN. 0.360
 SFF-1 (1) (1956)
 GRAN. 0.360
 0100 (MORGAN F.)
 18+58.6
 0100
 310+44.3 (5)

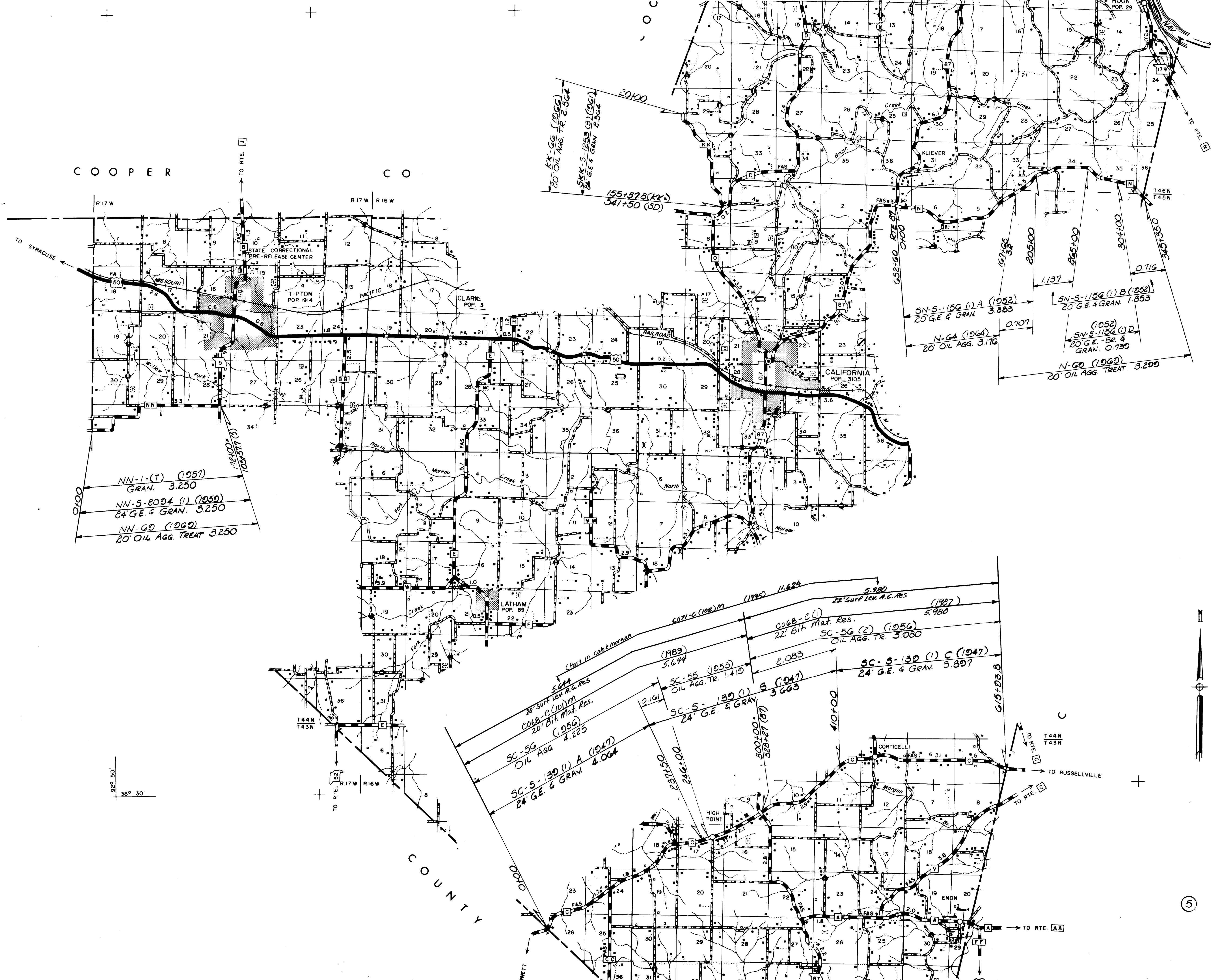
134+14.1
 0100
 62+43.5 (50)
 SBB-1 (1) (1956)
 GRAN. 2.546
 SBB-5-1572 (1) (1956)
 24 G.E. & GRAN. 2.546
 BB-65-1965
 20 OIL AGG. TR. 2.546

D-64 (1964)
 20 OIL AGG. 1.065
 D-66 (1966)
 20 OIL AGG. 2.200
 D-67 (1967)
 20 OIL AGG. TR. 6.730
 8.939
 5D-5-1253 (1) (1959)
 24 G.E. & GRAN. 10.008
 0100
 67+33.5
 TO PRAIRIE HOME

02183.6 (32) 24+1
 203+107
 V-63 (1963)
 20 OIL AGG. TR. 3.350
 SV-S-1470 (1) (1956)
 24 G.E. & GRAN. 3.350
 SV-1 (1) (1956)
 GRAN. 3.350
 0100
 20168.1 (6) (COLE CO.)
 TO RTE [A]
 TO RTE [B]
 TO RUSSELLVILLE
 TASHN TASHN

U-1 (1969)
 COB-LIC
 28 G.E. & 20 OIL AGG. 0.466
 2.288
 U-65 (1965)
 20 OIL AGG. TR. 3.303
 SU-S-1591 (1) (1956)
 24 G.E. & GRAN. 3.303
 SU-1 (1) (1956)
 GRAN. 3.303
 174101.5
 208+05 (87)
 20145
 53+53.758 (1)
 33+57.10 (1) A.H.
 1186+60.5 (51)
 207+201
 232+07.2
 220+10 ±
 0.075
 0.433
 PLACE
 DATED
 24 OIL AGG. TR. 4.966
 SV-S-1455 (1) (1956)
 24 G.E. & GRAN. 4.966
 SV-1 (1) (1956)
 GRAN. 4.966
 0120

BB
 D
 U
 V
 V
 Z
 ROUTES
 068
 MONITEAU
 SHEET 6 OF 7



COOPER

CO

R17W

R17W R16W

TO SYRACUSE

NN-1-(T) (1957)
GRAN. 3.250
NN-S-2004 (1) (1950)
24' G.E. & GRAN. 3.250
NN-GD (1960)
20' OIL AGG. TREAT 3.250

KK-GG (1966)
20' OIL AGG. TR. 2.564
SKK-S-1253 (3) (1961)
24' G.E. & GRAN. 2.564

55+37.8(KK)
341+50 (SD)

SN-S-1156 (1) A (1952)
20' G.E. & GRAN. 3.883
N-G4 (1964)
20' OIL AGG. 3.176

SN-S-1156 (1) B (1952)
20' G.E. & GRAN. 1.853
(1952)
SN-S-1156 (1) D
20' G.E. & GRAN. 0.730
N-GD (1960)
20' OIL AGG. TREAT. 3.200

5.644
20' SURF LEV. A.G. RES.
C06B-C (10) M
20' BIT. MAT. RES.
SC-S-56 (1956)
OIL AGG. 4.225
SC-S-130 (1) A (1947)
24' G.E. & GRAV. 4.064
SC-S-55 (1955)
OIL AGG. TR. 1.410
SC-S-130 (1) B (1947)
24' G.E. & GRAV. 3.663
C071-C (102) M (1992) 11.624
5.980
22' SURF LEV. A.G. RES. (1987) 5.980
C06B-C (1)
22' BIT. MAT. RES.
SC-S-56 (2) (1956)
OIL AGG. TR. 3.080
2.083
SC-S-130 (1) C (1947)
24' G.E. & GRAV. 3.897
410.100
300+00
320+27 (87)

92° 50'
38° 30'



ROUTES C
N
KK
NN

⑤ 068 SHEET 2 OF 2
MONITEAU