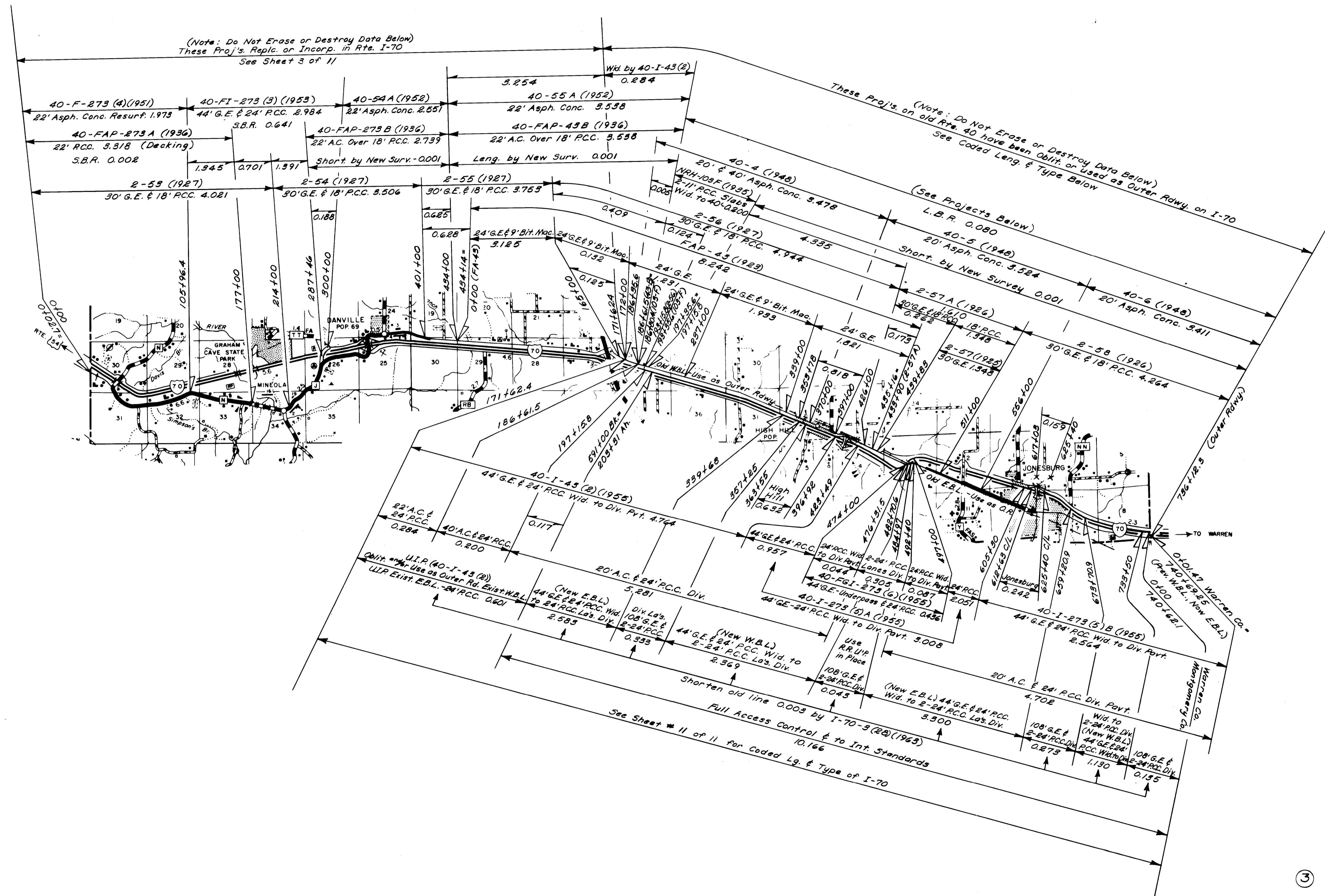


ROUTE
19

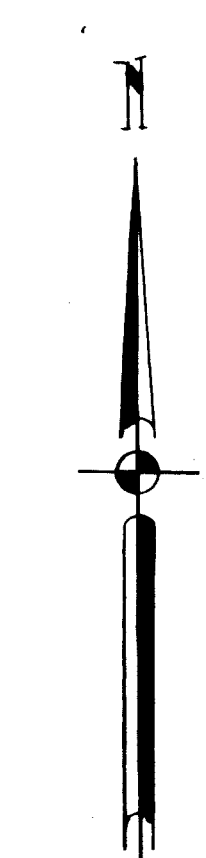
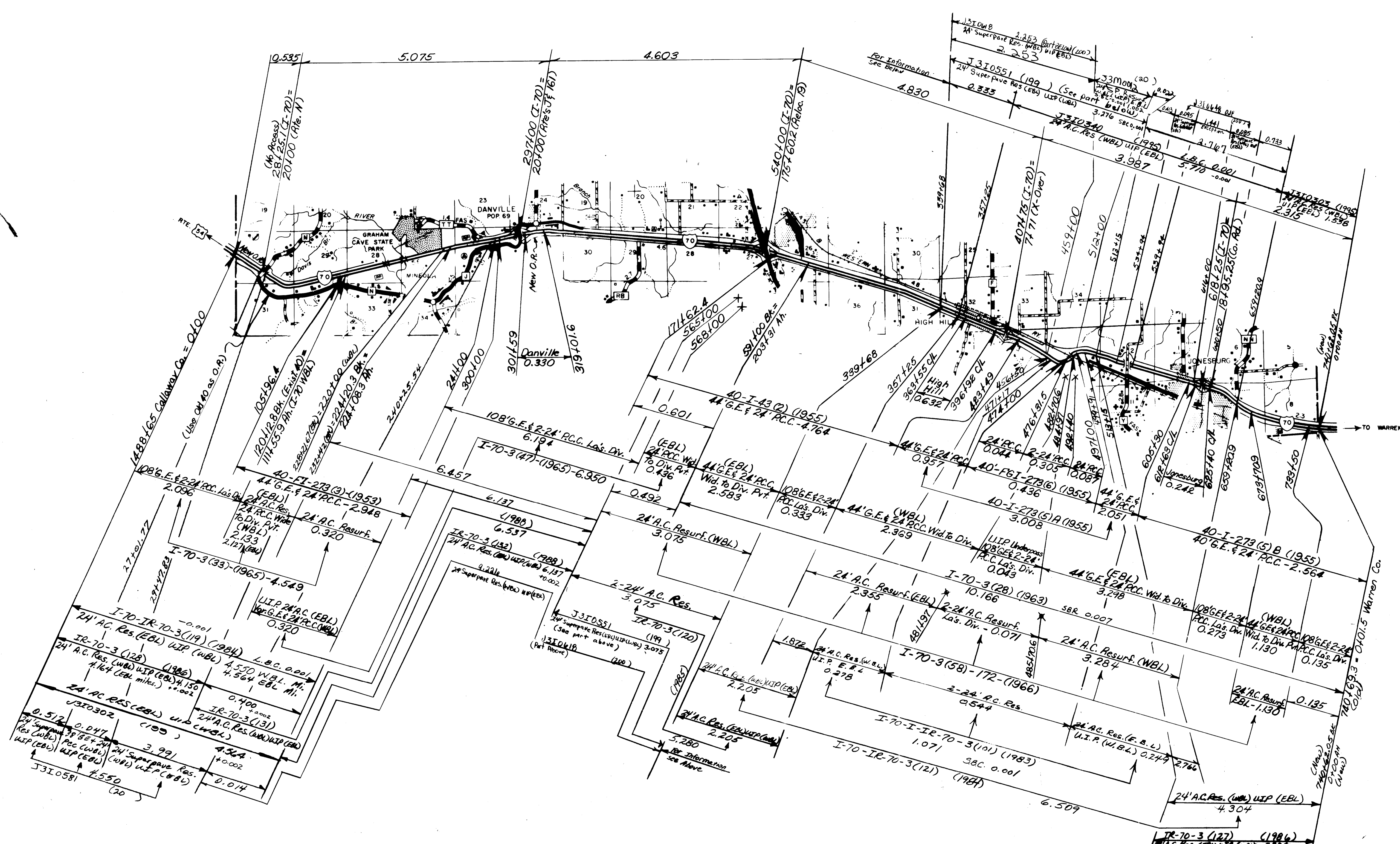
③ 070 SHEET 1 OF 11
MONTGOMERY



(Note: Do Not Erase or Destroy Data Below)
 These Proj's. Replc. or Incorp. in Rte. I-70
 See Sheet 3 of 11

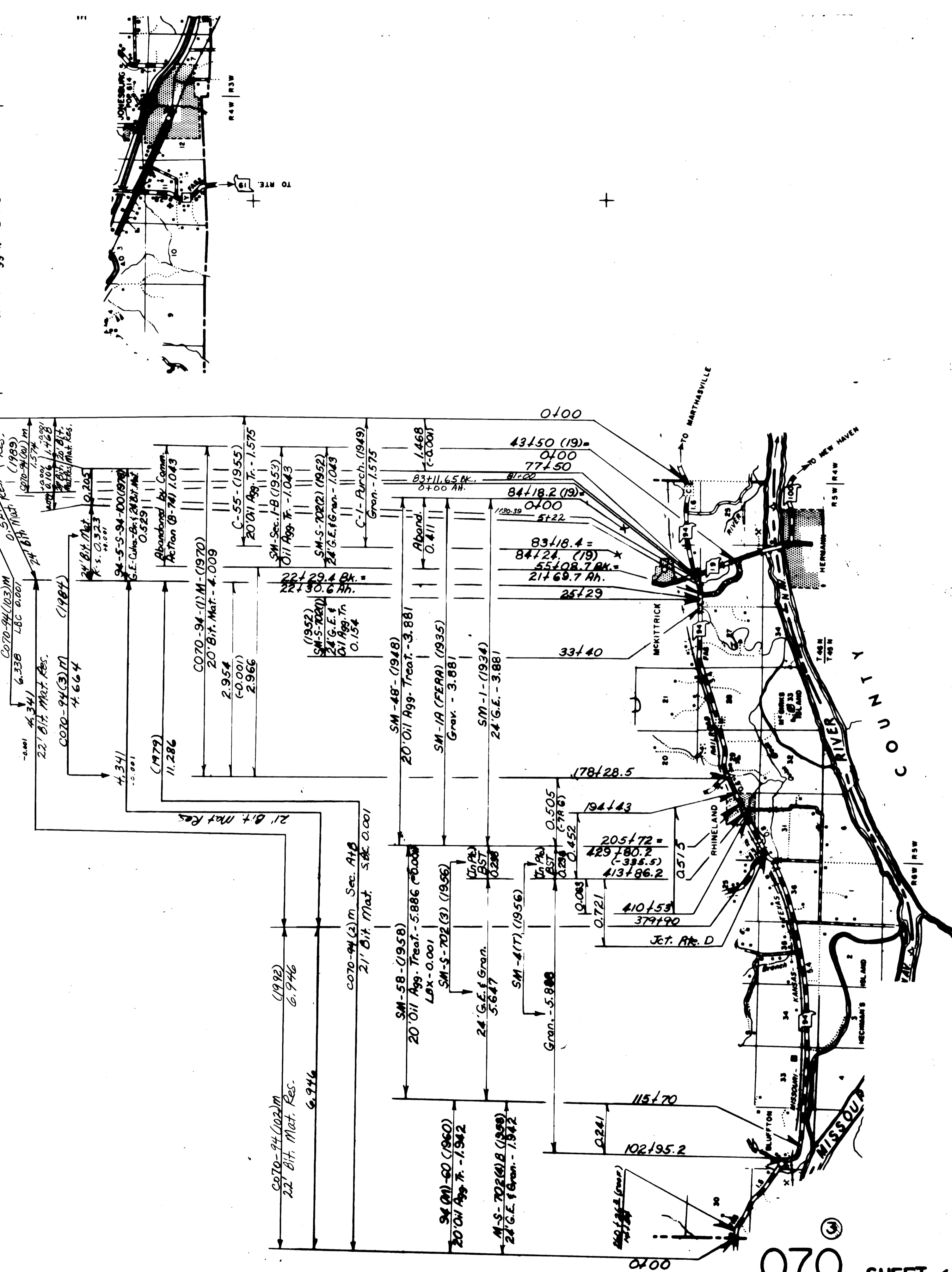
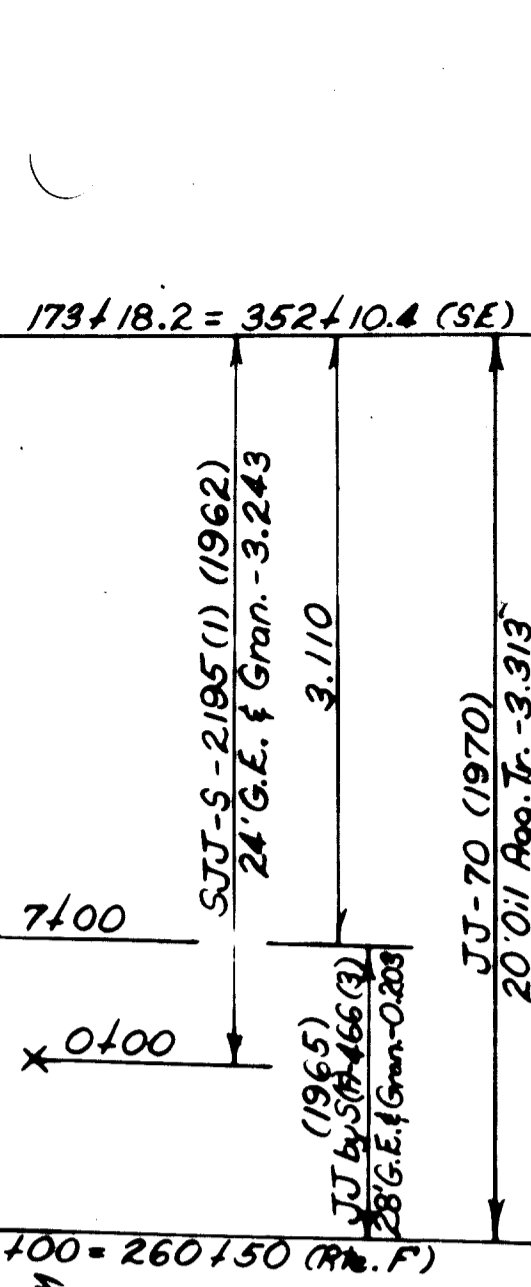
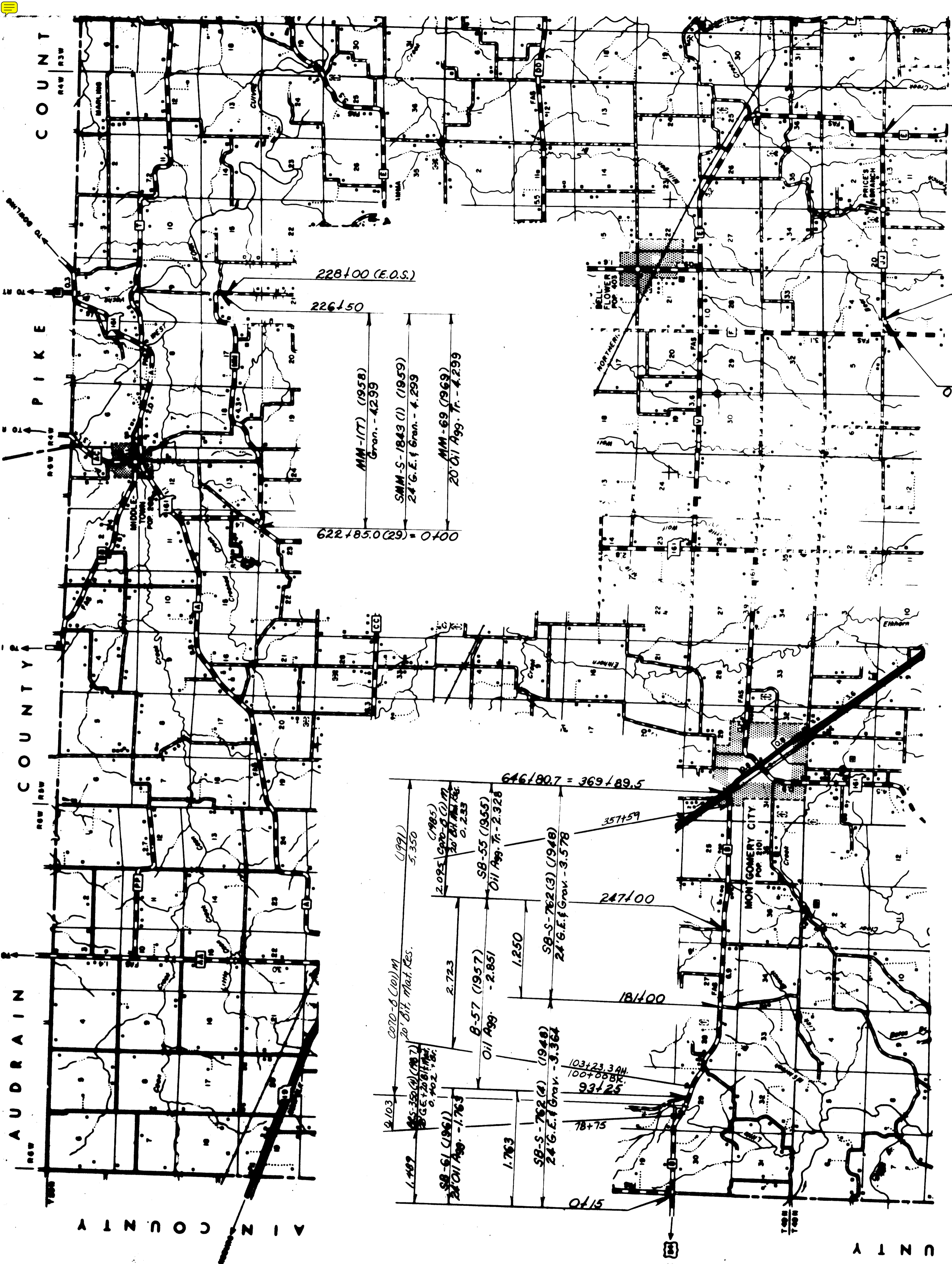
(Note: Do Not Erase or Destroy Data Below)
 These Proj's. on old Rte. 40 have been Oblit. or Used as Outer Rdwy. on I-70
 See Coded Leng. & Type Below
 (See Projects Below)
 L.B.R. 0.080
 40-5 (1940)
 20' Asph. Conc. 3.584
 Short. by New Survey 0.001

ROUTE
 40
 (SEE SHEET
 # 3 - I-70)

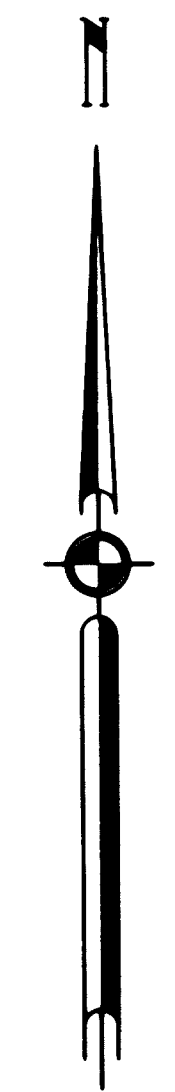
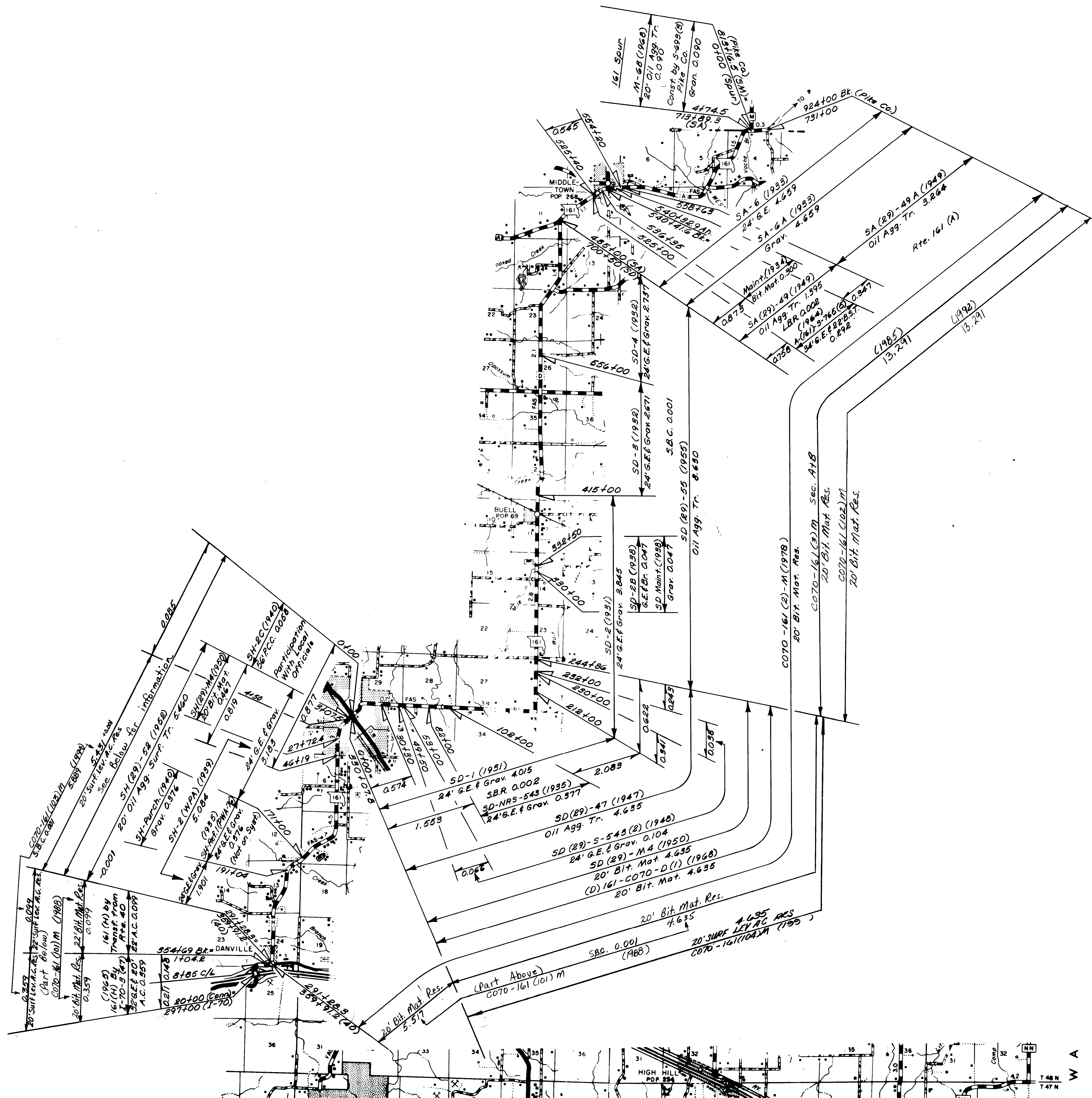


ROUTE
I-70
(SEE SHEET
2 - RTE-40)

070 SHEET 3 OF 11
MONTGOMERY

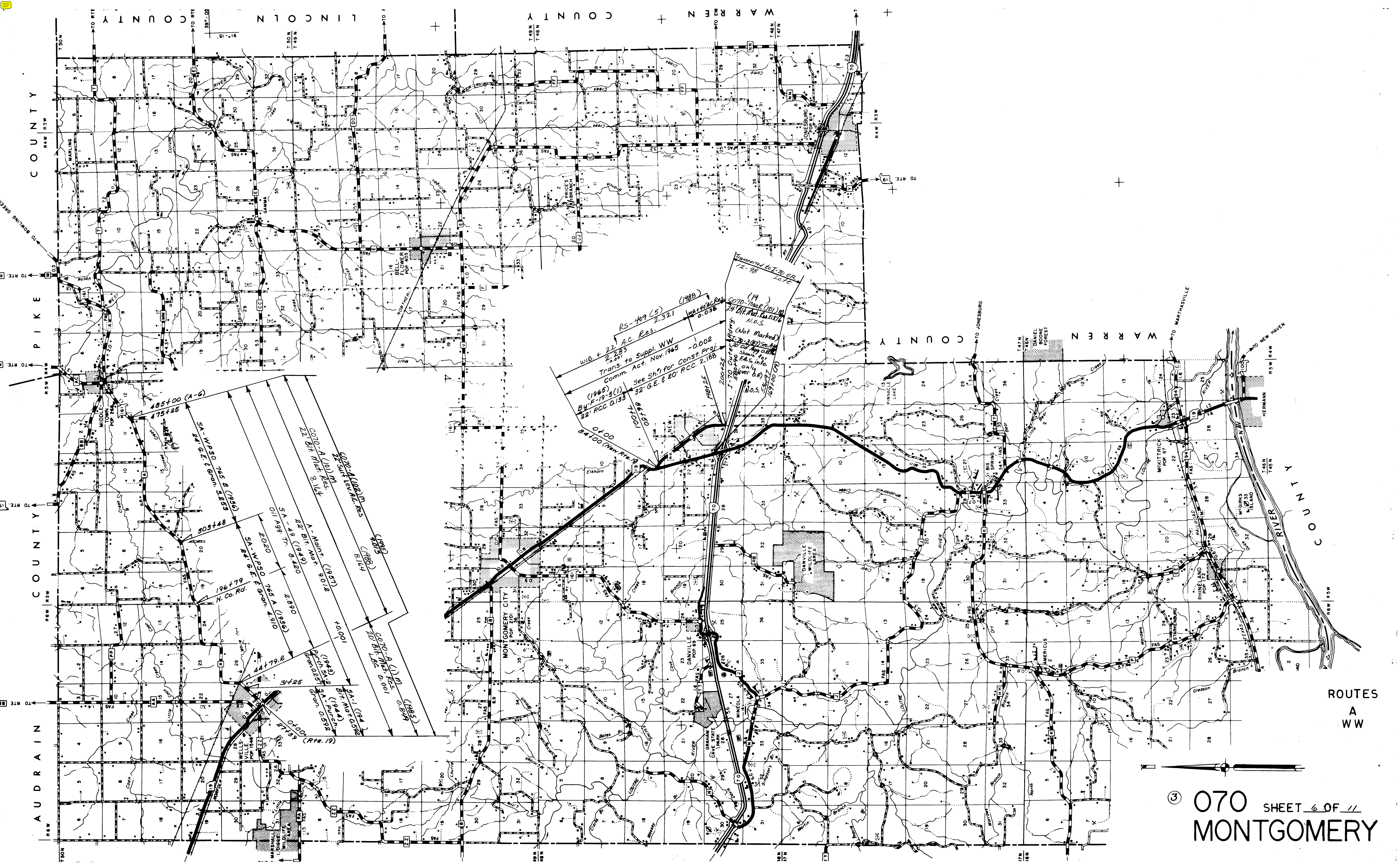


ROUTES
94
JJ
MM



ROUTES
161
161 SPUR

070 SHEET 5 OF 11
MONTGOMERY

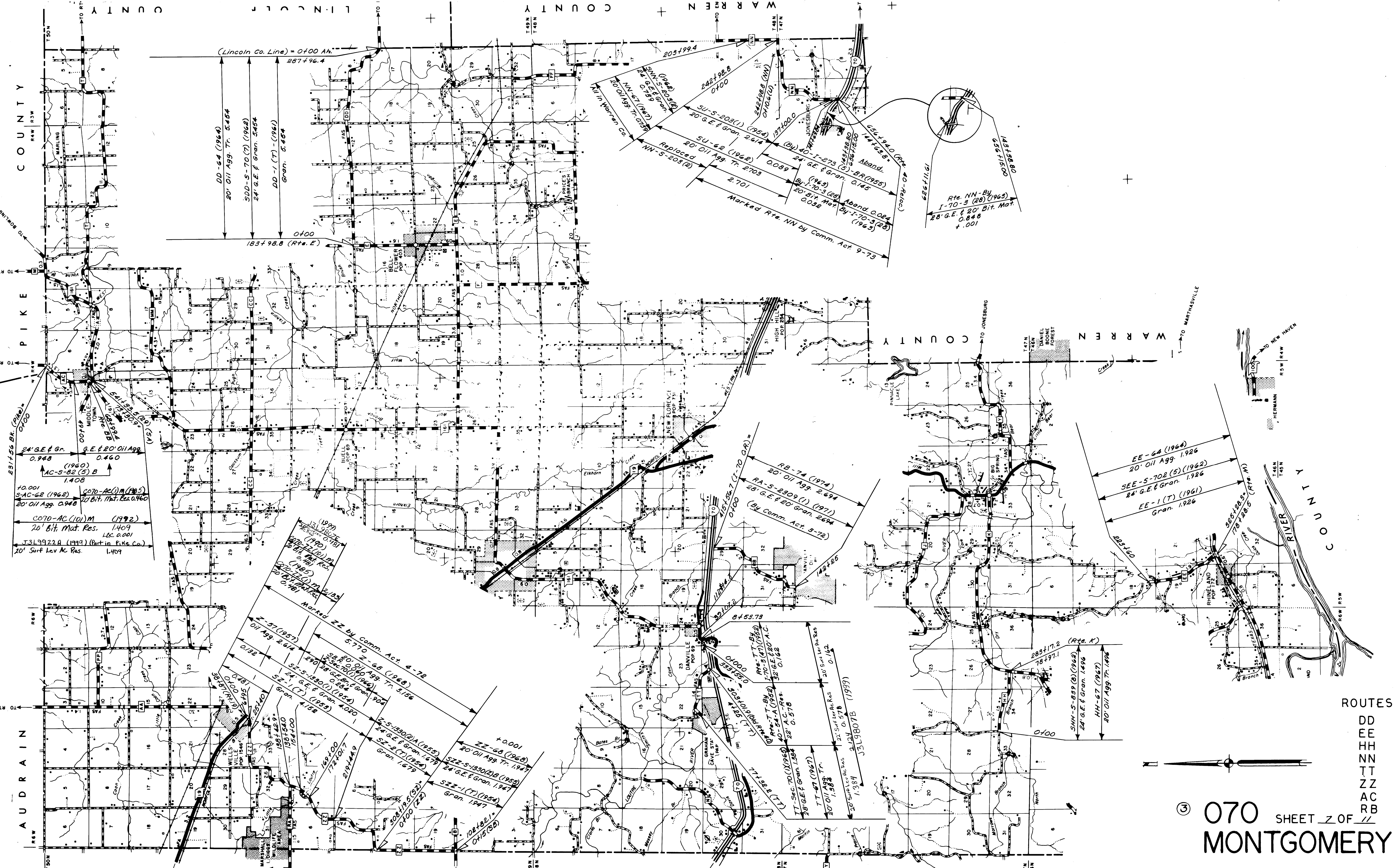


AUDRAIN COUNTY PIKE COUNTY WARREN COUNTY LINCOLN COUNTY

ROUTES
A
WW



070 SHEET 6 OF 11
MONTGOMERY



COUNTY
PIKE

WARREN COUNTY

WARREN COUNTY

COUNTY
RIVER

(Lincoln Co. Line) = 0400 Ah.
2877+96.4

DD-64 (1964)
20' Oil Agg. Tr. 5454
SDD-5-70(7) (1962)
24' G.E. & Gran. 5454
DD-1 (T) - (1961)
Gran. 5454

231.56 Bk. (Coke) 0400
24' G.E. & Gr. 0.948
AC-S-82 (S) B (1960)
1408
10.001
5-AC-62 (1962)
20' Oil Agg. 0.948
COT0-AC (10) M (1992)
20' Bit. Mat. Res. 1.409
L6C 0.001
J319922 A (1999) (Part in Pike Co.)
20' Surf Lev Ac Res. 1.409

205499.4
242198.8
0400
SU-S-203(1) (1954)
20' G.E. & Gran. 2.614
Replaced
20' Oil Agg. Tr. 2703
NN-S-203(2)
22' Oil Agg. Tr. 0229
NN-67 (1962)
24' G.E. & Gran. 0.759
24' G.E. & Gran. (1962) 2.614
24' G.E. & Gran. (1955)
0089
24' G.E. & Gran. 0.145
Aband. 0.024
By I-70-3 (28)
20' Bit. Mat. 0.848
+ .001
Rte. NN-67
I-70-3 (28) (1963)
28' G.E. & 20' Bit. Mat.
+ .001

EE-64 (1964)
20' Oil Agg. 1.926
SEE-5-702 (S) (1962)
24' G.E. & Gran. 1.926
EE-1 (T) (1961)
Gran. 1.926

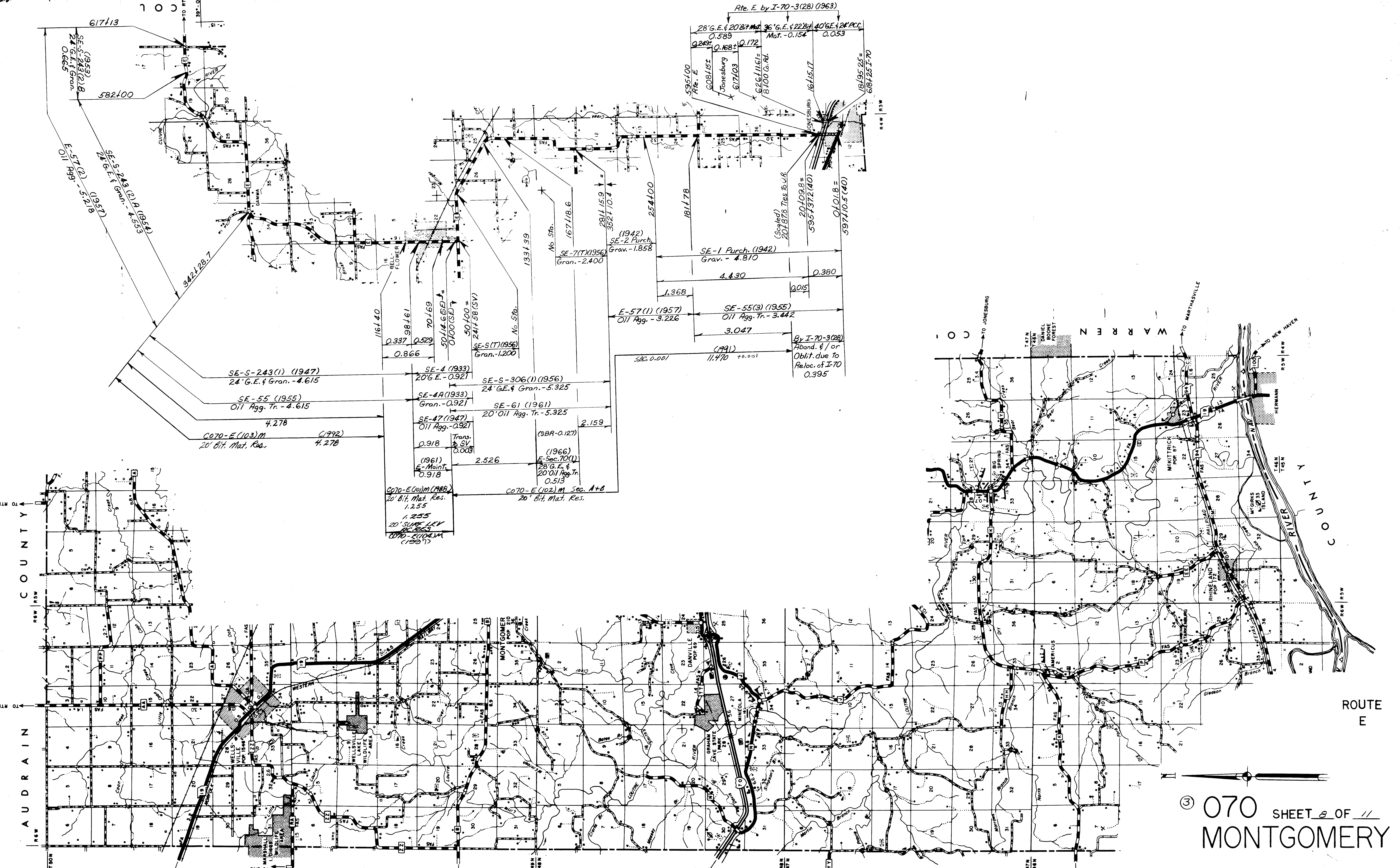
SHH-S-89 (B) (1964)
24' G.E. & Gran. 1.496
HH-67 (1967)
20' Oil Agg. Tr. 1.496

2-57 (1957)
Oil Agg. 2.614
Z-68 (1968)
20' Oil Agg. Tr. 3.156
5-5-1330(2)A (1953)
24' G.E. & Gran. 1.679
SZ-2 (T) (1954)
24' G.E. & Gran. 1.679
SZ-1 (T) (1954)
Gran. 1.679
Z-5 (1955)
24' G.E. & Gran. 1.452
5-5-1330(2)B (1953)
24' G.E. & Gran. 1.679
SZ-2 (T) (1954)
24' G.E. & Gran. 1.679
SZ-1 (T) (1954)
Gran. 1.679
ZZ-68 (1968)
20' Oil Agg. Tr. 1.947
ZZ-5-1330(2)B (1953)
24' G.E. & Gran. 1.679
ZZ-1 (T) (1954)
Gran. 1.679
108488.1
0415 (S2)

RB-74 (1974)
20' Oil Agg. 2.694
RA-S-2809 (I) (1971)
28' G.E. & 20' Gran. 2.694
(By Comm. Act. 3-72)

2-57 (1957)
Oil Agg. 2.614
Z-68 (1968)
20' Oil Agg. Tr. 3.156
5-5-1330(2)A (1953)
24' G.E. & Gran. 1.679
SZ-2 (T) (1954)
24' G.E. & Gran. 1.679
SZ-1 (T) (1954)
Gran. 1.679
Z-5 (1955)
24' G.E. & Gran. 1.452
5-5-1330(2)B (1953)
24' G.E. & Gran. 1.679
SZ-2 (T) (1954)
24' G.E. & Gran. 1.679
SZ-1 (T) (1954)
Gran. 1.679
ZZ-68 (1968)
20' Oil Agg. Tr. 1.947
ZZ-5-1330(2)B (1953)
24' G.E. & Gran. 1.679
ZZ-1 (T) (1954)
Gran. 1.679
108488.1
0415 (S2)

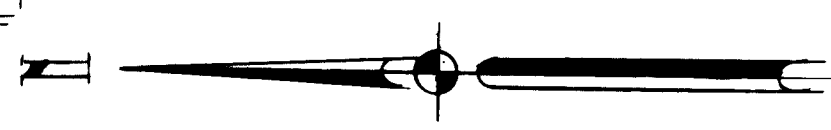
- DD
- EE
- HH
- NN
- TT
- ZZ
- AC
- RB



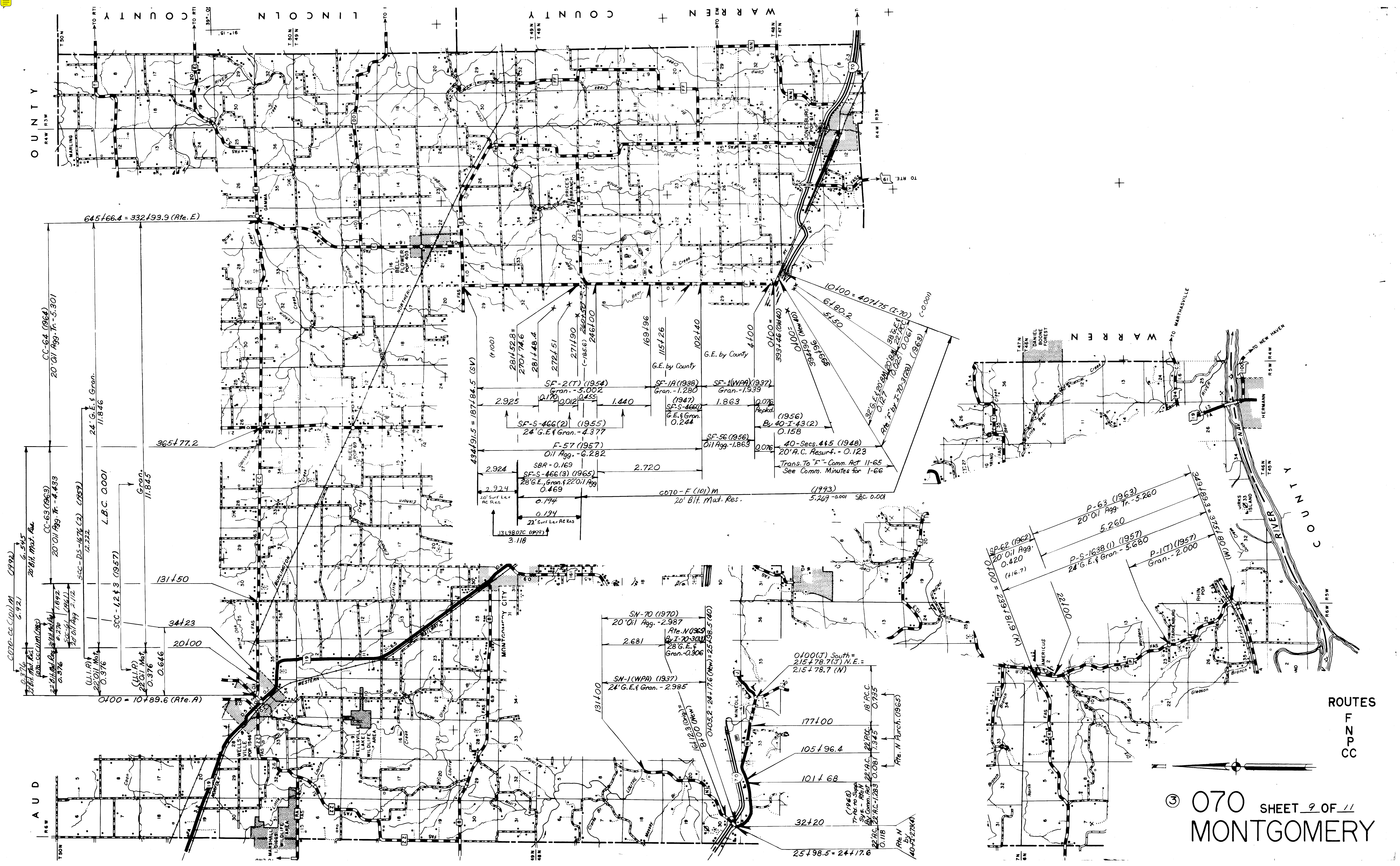
AUDRAIN COUNTY

WARREN COUNTY

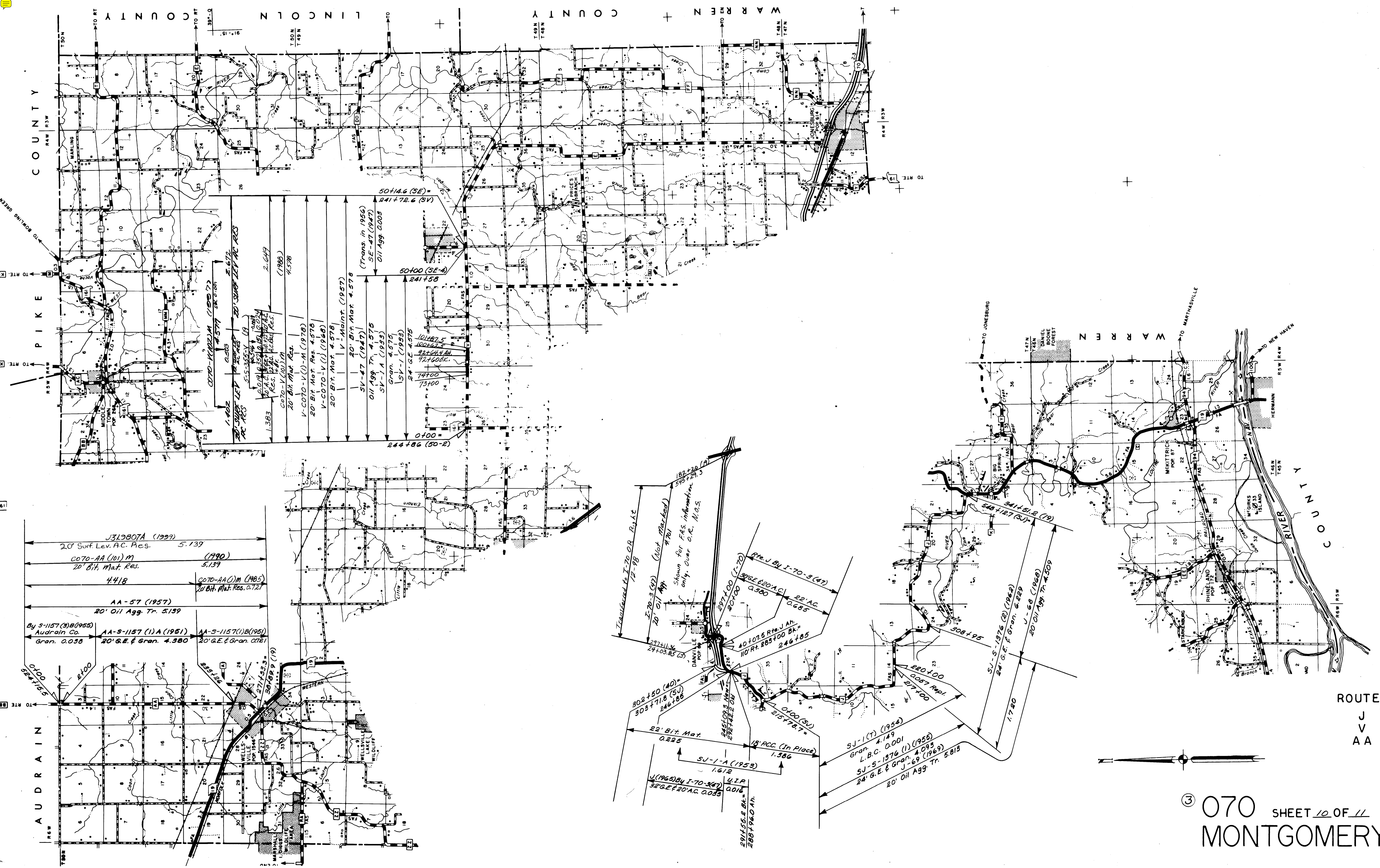
ROUTE E



③ 070 SHEET 8 OF 11
MONTGOMERY



ROUTES
 F
 N
 P
 C
 C



COUNTY
PIKE
AUDRAIN

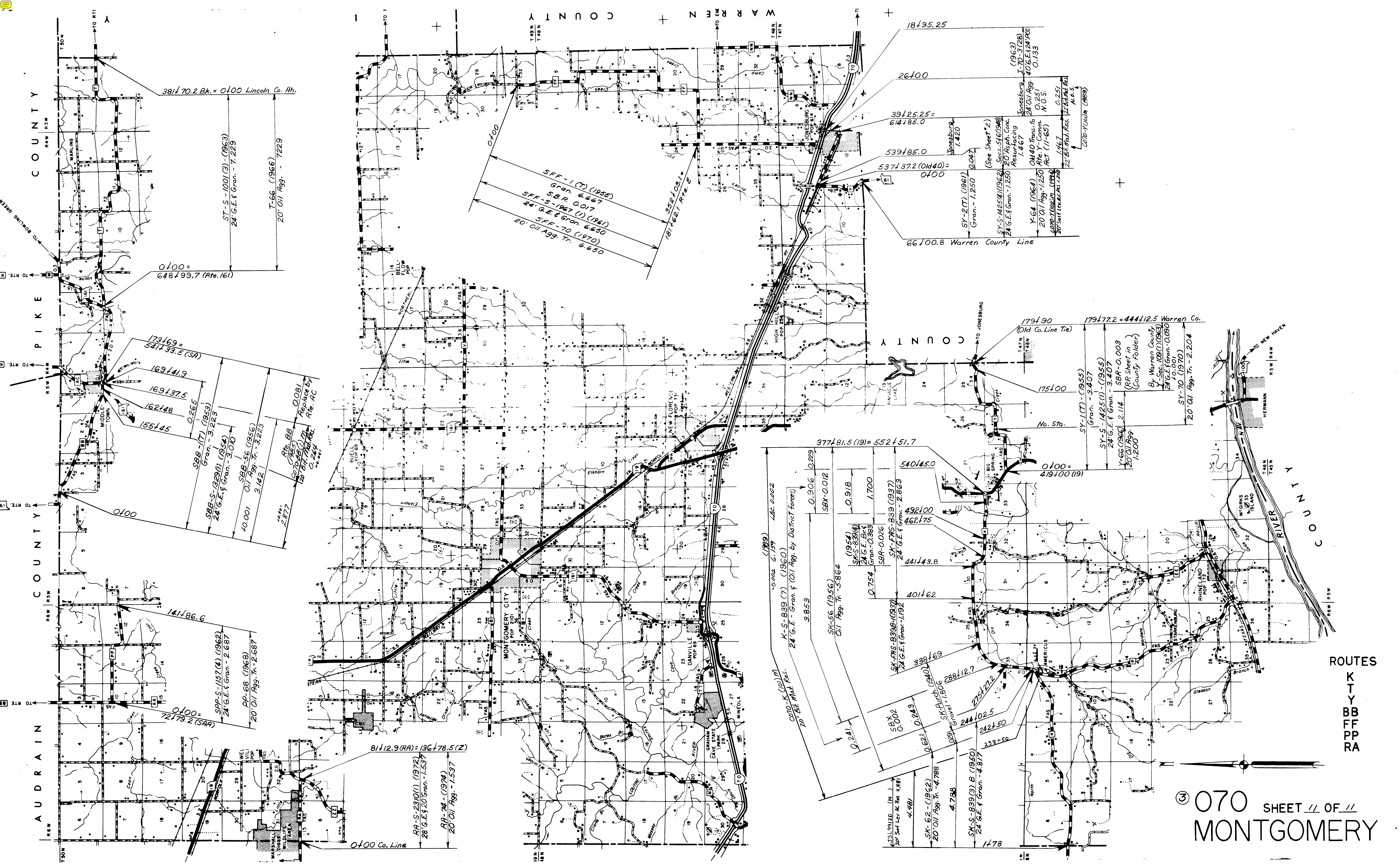
WARREN COUNTY
LINCOLN COUNTY

WARREN COUNTY
RIVER COUNTY

J319807A (1999)
 20' Surf. Lev. A.C. Res. 5.139
 C070-AA (01) M (1990)
 20' Bit. Mat. Res. 5.139
 4418
 C070-AA (0) M (1985)
 20' Bit. Mat. Res. 0.721
 AA-57 (1957)
 20' Oil Agg. Tr. 5.139
 By 5-1157 (9) B (1955)
 Audrain Co.
 Gran. 0.058
 AA-5-1157 (1) A (1951)
 20' G.E. & Gran. 4.580
 AA-5-1157 (1) B (1951)
 20' G.E. & Gran. 0.181

302+50 (40) =
 303+71.8 (SU)
 246+85
 22' Bit. Mat. 0.225
 SU-1-A (1953)
 1.672
 J (1965) By I-70-3(47)
 32' G.E. & 20' AC 0.053
 291+55.8 BK. =
 288+96.0 A.H.
 245+09.3 NEW
 297+42.2 OB.
 287+100
 20' AC
 0.980
 30' G.E. & 20' AC
 0.685
 22' AC
 0.685
 40+07.5 Rte J A.H.
 110 Rt. 283+00 BK.
 246+85
 18' ACC. (In Place)
 1.586
 SU-1 (7) (1954)
 Gran. 4.149
 L.B.C. 0.001
 SJ-5-1376 (1) (1955)
 SJ-5-1376 (1) (1955)
 24' G.E. & Gran. 4.093
 J-69 (1969)
 20' Oil Agg. Tr. 5.818
 247' G.E. & Gran. 6.829
 SU-S-1376 (2) (1962)
 1.720
 J-68 (1968)
 20' Oil Agg. Tr. 4.509
 280+00
 0.087 Rep.
 287+00
 341+51.8 (19)
 546+187 (SU)

ROUTES
 J
 V
 AA
 070 SHEET 10 OF 11
 MONTGOMERY



AUDRAIN COUNTY PIKE WARREN COUNTY MONTGOMERY COUNTY

381770.2 Bk. = 0100 Lincoln Co. Ah.

ST-S-1001(3)-(1963)
24' G.E. & Gran. - 7.229

T-66 (1966)
20' Oil Agg. - 7229

0100 = 648799.7 (Rte. 161)

173169 = 541733.5 (SR)

169141.9

162148

155145

0.265

SBB-17 (1953)
Gran. - 3.223

SBB-S-1929(1) (1954)
24' G.E. & Gran. - 3.010

SBB-S-6 (1956)
20' Oil Agg. Tr. - 3.223

10.001

3.142

2.877

Rte. 88 (1985)
Replace by Rte. AC

141186.6

0100 = 72179.2 (SAR)

SPP-S-1157(4) (1962)
24' G.E. & Gran. - 2.687

20' Oil Agg. Tr. - 2.687

0100 = 72179.2 (SAR)

PP-68 (1968)
20' Oil Agg. Tr. - 2.687

81112.9 (RA) = 136178.5 (Z)

RA-S-2310(1) (1972)
28' G.E. & 20' Gran. - 1.537

RA-74 (1974)
20' Oil Agg. - 1.537

0100 Co. Line

SFF-1(7) (1955)
Gran. 6.667

SBR-0017

SFF-5-1967(1) (1961)
24' G.E. & Gran. 6.650

SFF-70 (1970)
20' Oil Agg. Tr. 6.650

389109.1

1817621 P.C.E.

18195.25

26100

39125.25 = 614185.0

539185.0

5371372 (Old 40) = 0100

66700.8 Warren County Line

1791.90 (Old Co. Line Tie)

179177.2 = 444112.5 Warren Co.

175100

No. Sta.

SY-1(7) (1955)
Gran. - 9.407

SY-S-1425(1) (1955)
24' G.E. & Gran. - 3.407

Y-66 (1966)
20' Oil Agg. - 1.200

0100 = 419100 (19)

377181.5 (19) = 552151.7

540145.0

492100

462175

441143.8

401162

338169

28812.7

275121.2

244102.5

242150

233150

1778

070 SHEET // OF // MONTGOMERY

ROUTES
K
T
Y
BB
FF
PP
RA