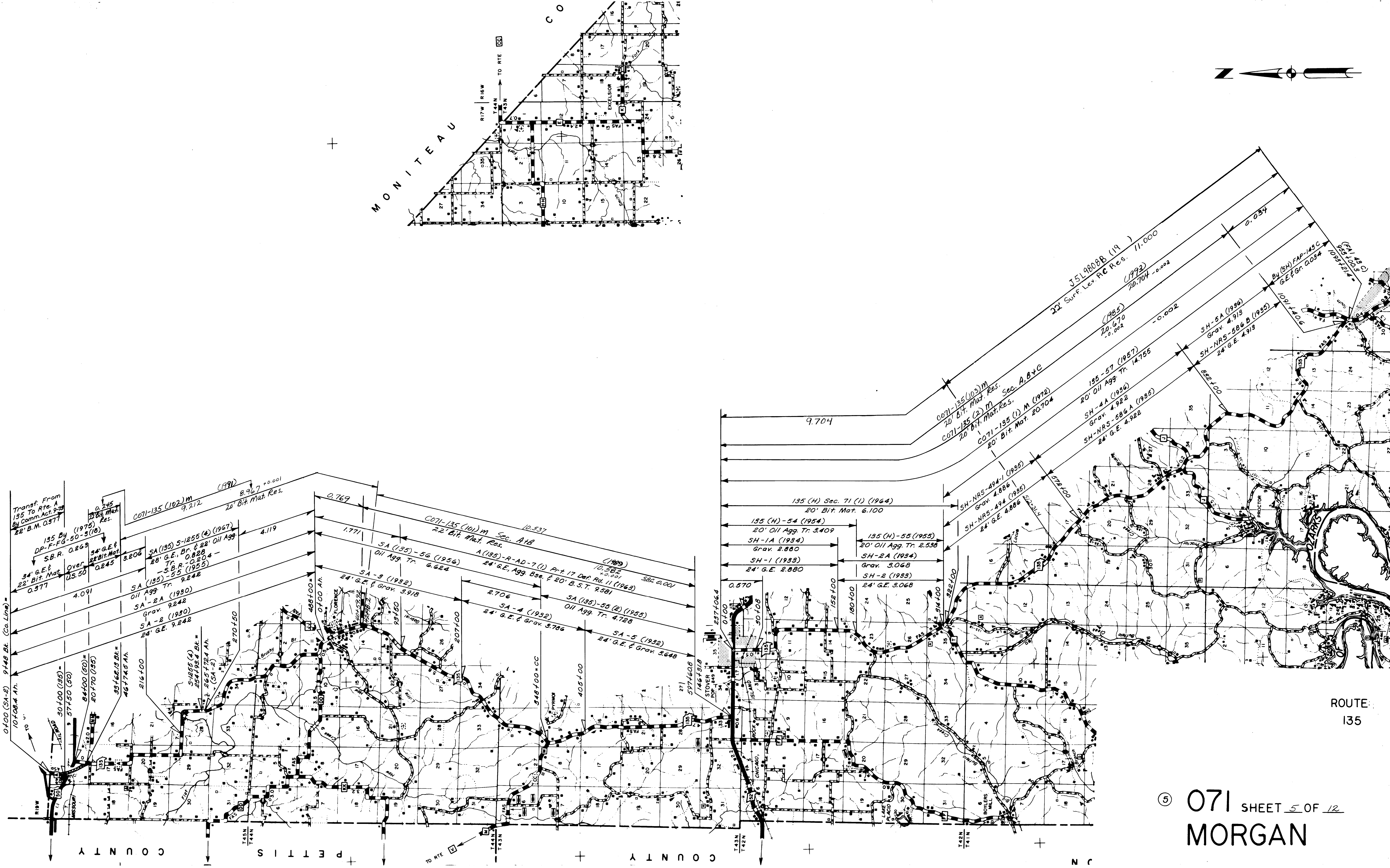


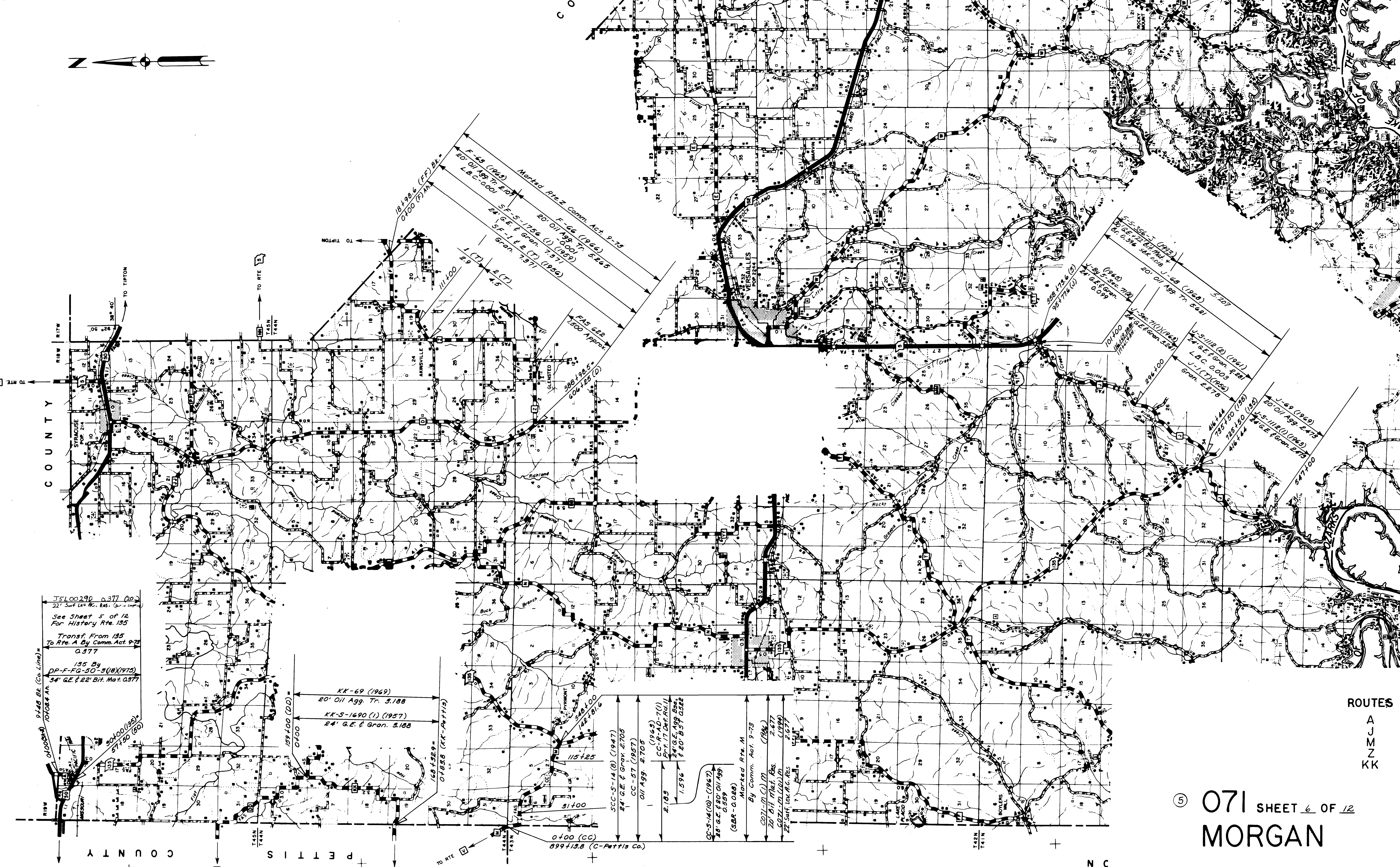
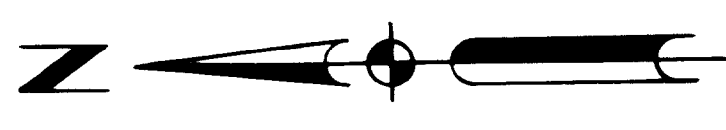
ROUTES
50
MM

MONITEAU



ROUTE 135

071 SHEET 5 OF 12
MORGAN



J5L00290 0.377 (20)
 22' Surf Lev. R.C. Res. (part copy)
 See Sheet 5 of 12
 For History Rte. 135
 Transf. From 135
 To Rte. A By Comm. Act. 9-78
 0.377
 135 By
 DP-F-FQ-50-5 (B) (1970)
 34' G.E. & 22' Bit. Mat. 0.377

KK-69 (1969)
 20' Oil Agg. Tr. 3.188
 KK-S-1690 (1) (1957)
 24' G.E. & Gran. 3.188

0+138.8 (KK-Pettis)

0+100 (CC)
 899+13.8 (C-Pettis Co.)
 SCC-S-14 (B) (1947)
 24' G.E. & Gran. 2.705
 CC-S-57 (1957)
 Oil Agg. 2.705

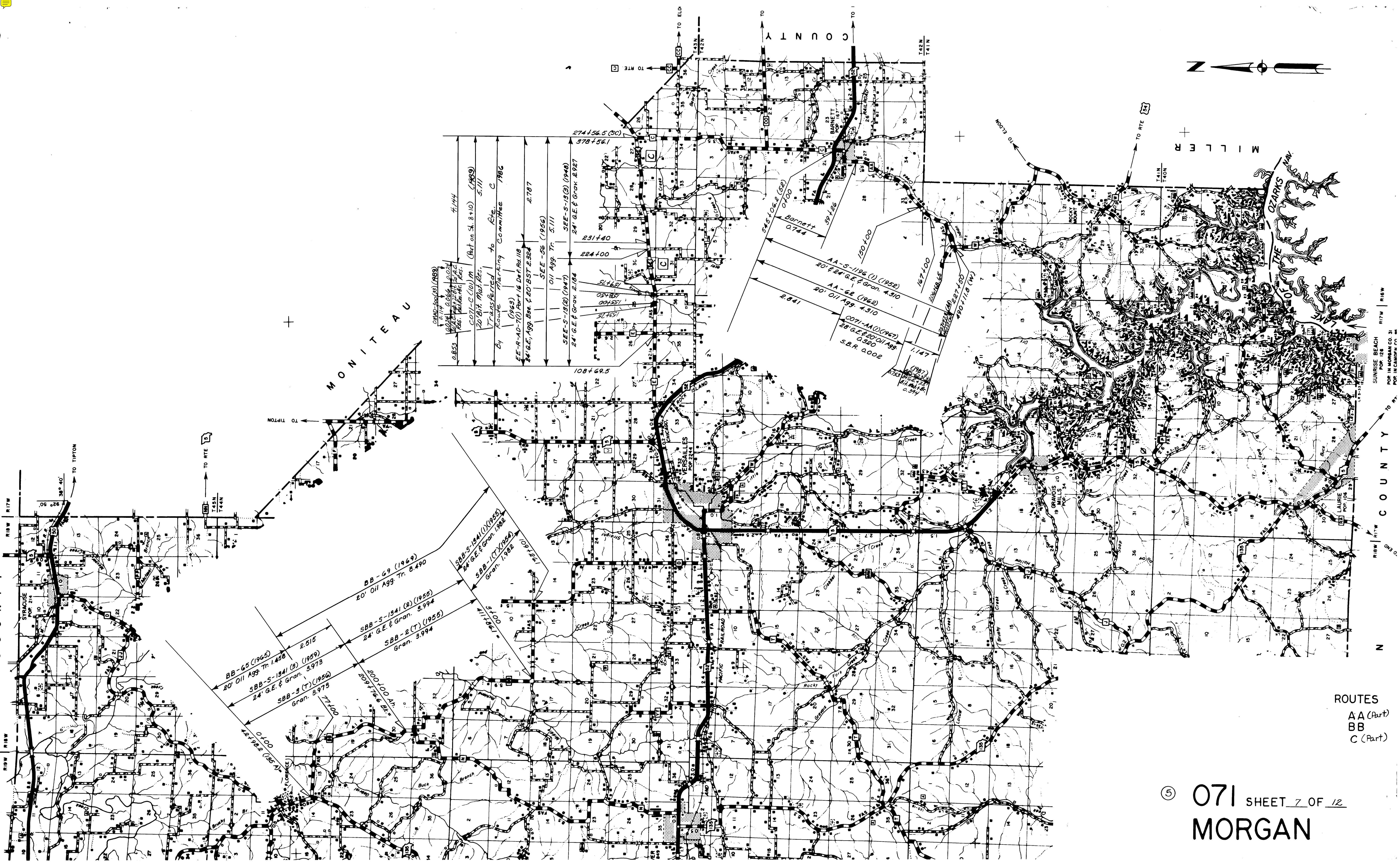
2+183
 1.596
 (1969)
 CC-F-AD-7 (1)
 24' G.E. Agg. Bas.
 & 20' BST 0.522

CC-S-14 (10) (1967)
 28' G.E. & 20' Oil Agg.
 0.259
 (SBR-0.088)

By Comm. Act. 9-78
 Marked Rte. M
 (2071-M (1) M)
 20' Oil Mat. Res.
 2.677
 SBRZ-CLC (1969)
 22' Surf. Lev. R.C. Res.
 2.677

ROUTES
 A
 J
 M
 Z
 K
 K

⑤ 071 SHEET 6 OF 12
 MORGAN

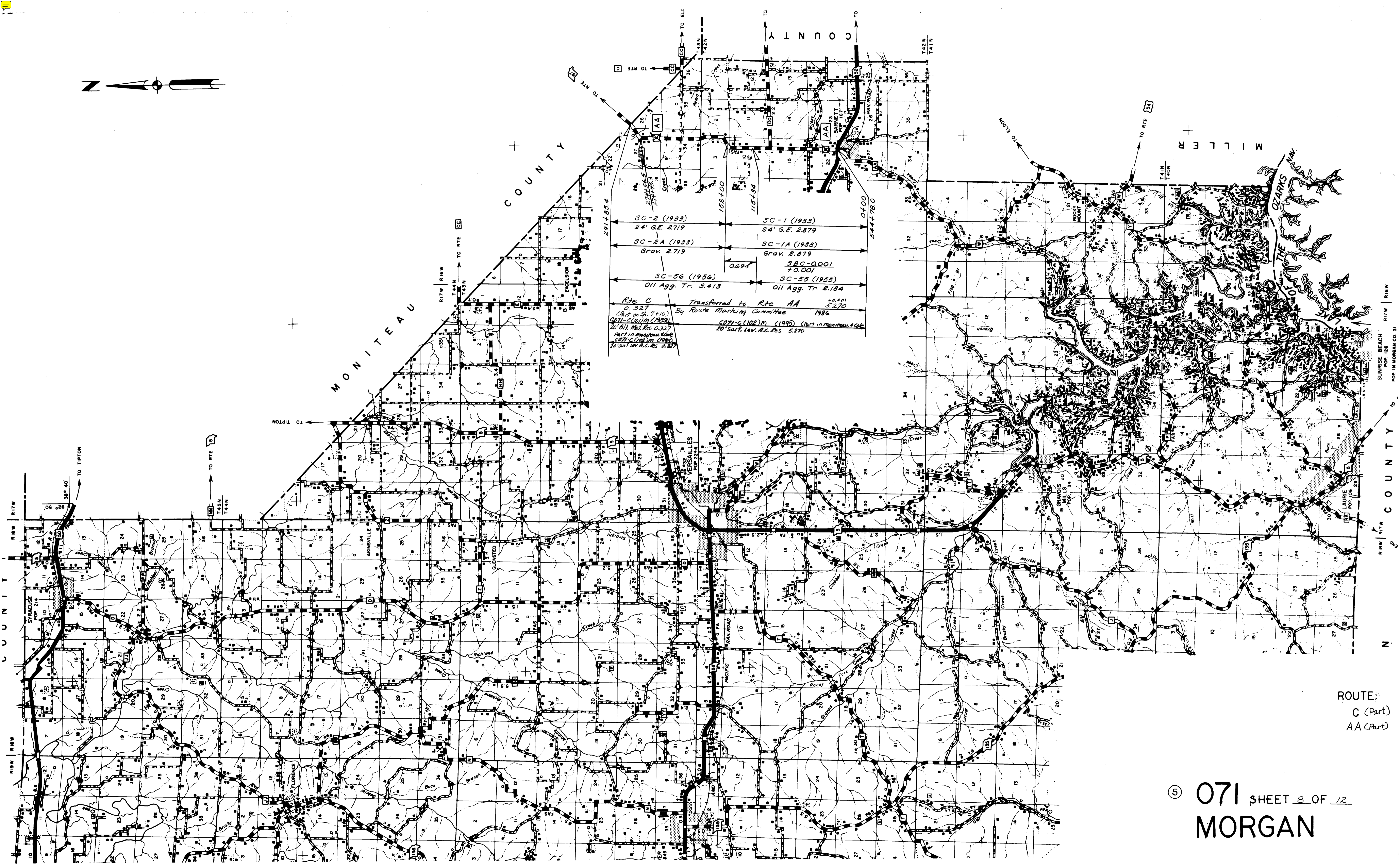


BB-65 (1965)
 20' Oil Aggr. Tr. 1,458
 2,515
 SBB-5-1341 (3) (1959)
 24' G.E. & Gran. 3,973
 SBB-2 (T) (1955)
 Gran. 3,994
 SBB-5-1341 (2) (1958)
 24' G.E. & Gran. 3,994
 SBB-1 (T) (1954)
 Gran. 1,582
 SBB-5-1341 (1) (1953)
 24' G.E. & Gran. 1,982
 77,100
 200,100 Ap.
 209,176 Br.
 01,100
 12,122 (1957)

011 Aggr. Tr. 5,111
 SEE-S-13(2) (1947)
 24' G.E. & Gran. 2,184
 274+56.5 (50)
 578+56.1
 231+40
 224+00
 108+69.5
 275+06.2 (52)
 0+100
 Barnett 0.744
 150+100
 167+100
 238+18.65
 227+100
 490+11.8 (W)
 AA-S-1126 (1) (1952)
 20' G.E. & Gran. 4,310
 AA-66 (1962)
 20' Oil Aggr. 4,310
 2,841
 1,147
 CO71-AA0 (1967)
 28' G.E. & 20' Oil Aggr.
 0,580
 S.B.R. 0,002
 (1987)
 1765 WILEY ROAD
 W. 1/4 S. 14 T. 14 N. R. 14 W.

ROUTES
 AA (Part)
 BB
 C (Part)

5 071 SHEET 7 OF 12
 MORGAN



SC-2 (1933) 24' G.E. 2719
 SC-2A (1933) Grav. 2.719
 SC-56 (1956) Oil Agg. Tr. 3.413
 SC-1 (1933) 24' G.E. 2.879
 SC-1A (1933) Grav. 2.879
 SC-55 (1955) Oil Agg. Tr. 2.184
 SBC-0.001 +0.001
 Rte C Transferred to Rte AA +0.001
 (Part on 34, 7+10) By Route Marking Committee 1986
 071-C(107)M (1989) Part in Morgan Co. 20' Surf. Lev. A.C. Res. 0.327
 071-C(102)M (1995) Part in Morgan Co. 20' Surf. Lev. A.C. Res. 5.270

ROUTE:
 C (Part)
 AA (Part)

071 SHEET 8 OF 12
 MORGAN



TE 66

C O U N T Y

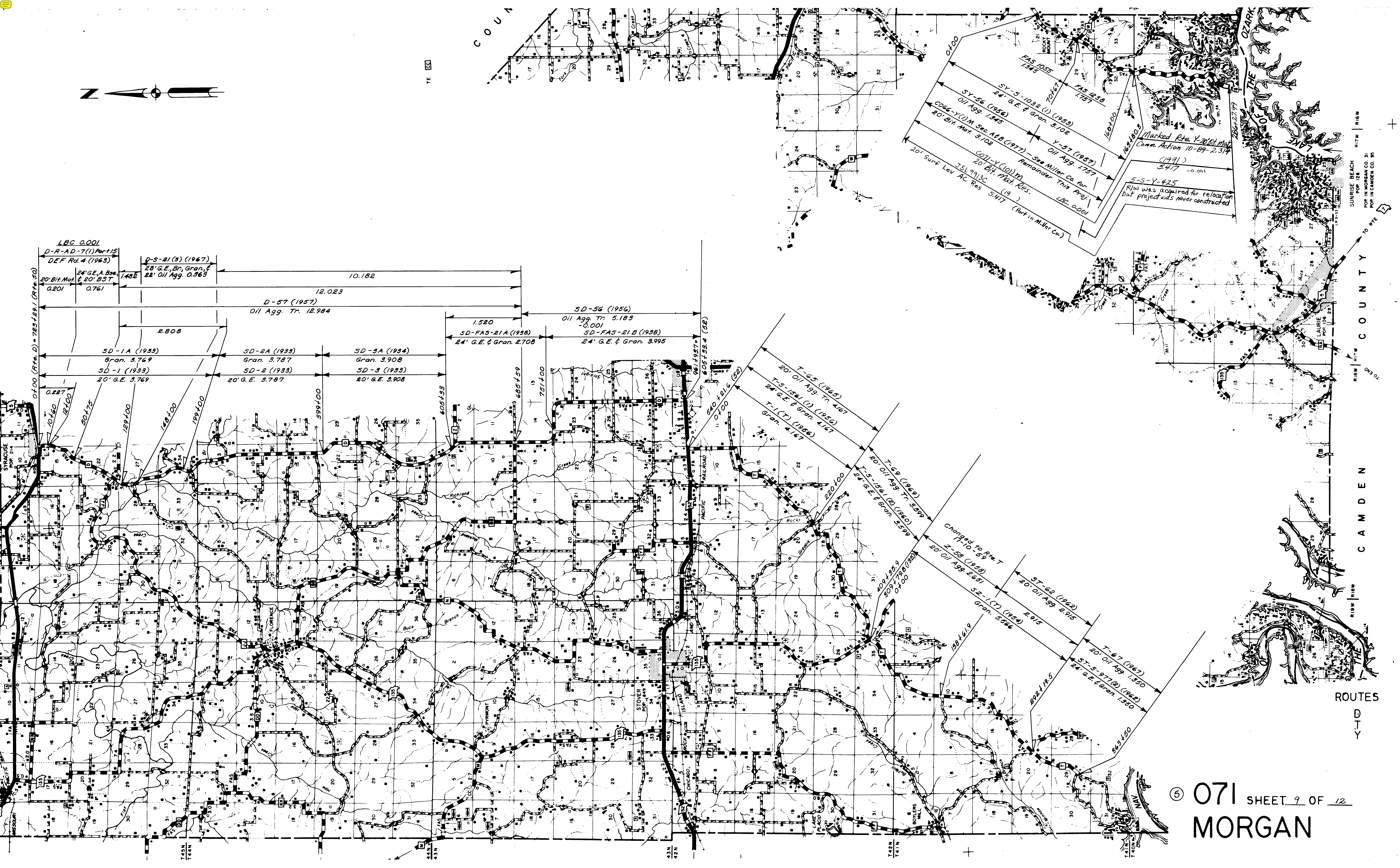
SUNRISE BEACH
POP. 124
POP. IN MORGAN CO. 31
POP. IN CAMDEN CO. 93

C O U N T Y

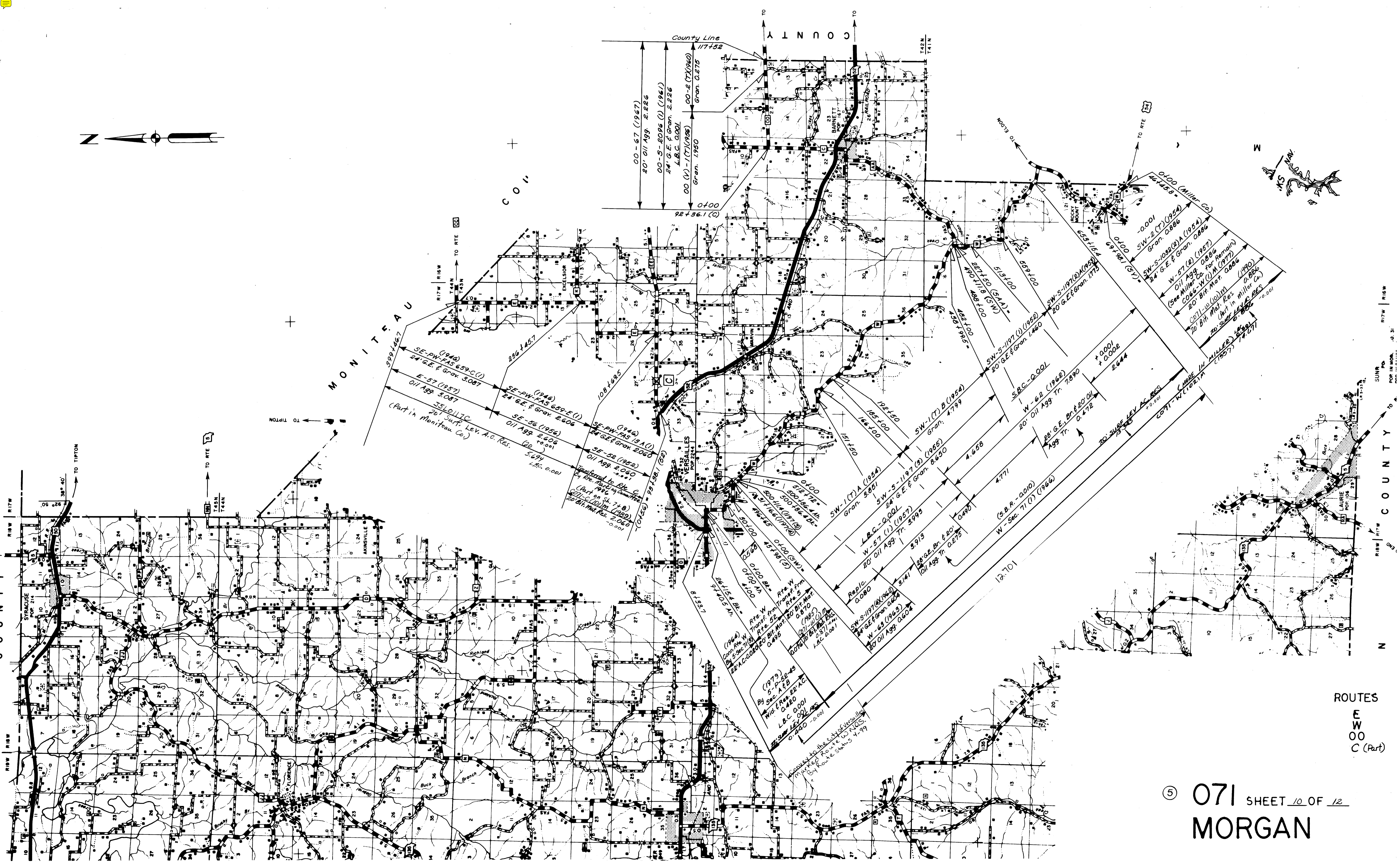
C A M D E N

R I S W

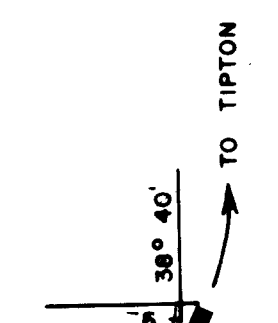
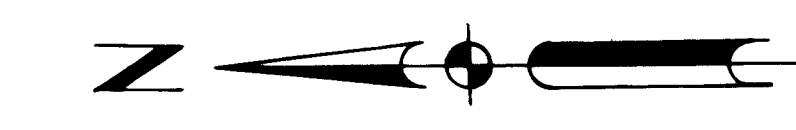
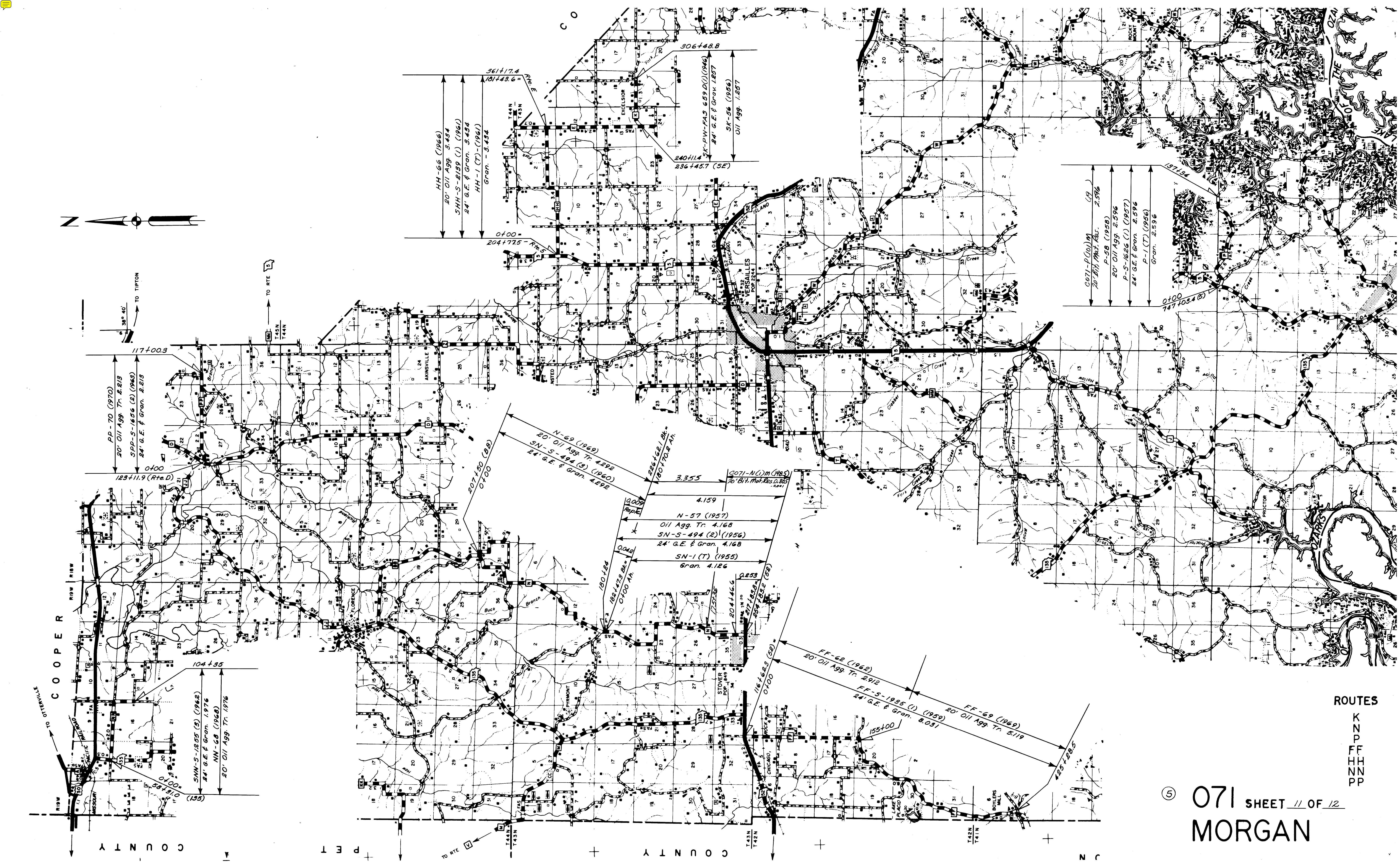
R O U T E S
D I T Y



⑤ 071 SHEET 9 OF 12
MORGAN



ROUTES
E
W
00
C (Part)



TO OTTAWA
 TO TIPTON
 TO RTE 1
 TO RTE 143N
 TO RTE 143E
 TO RTE 143W
 TO RTE 143S

117+003
 20' Oil Agg. Tr. 2,213
 SPP-S-1656 (2) (1962)
 24' G.E. & Gran. 2,213
 0+00
 129+11.9 (Rte. D)

104+35
 SNH-S-1255 (3) (1962)
 24' G.E. & Gran. 1,976
 NN-G8 (1968)
 20' Oil Agg. Tr. 1976

207+50 (8B)
 0+00
 N-69 (1969)
 20' Oil Agg. Tr. 4,292
 SN-S-494 (2) (1960)
 24' G.E. & Gran. 4,292

180+24
 0+00
 22+422.1 Blk.
 180+72.2 Blk.

4,159
 N-57 (1957)
 Oil Agg. Tr. 4,168
 SN-S-494 (2) (1960)
 24' G.E. & Gran. 4,168
 0+00
 SN-1 (T) (1955)
 Gran. 4,166

2071-N(1)M (1985)
 20' Blk. Mat. Res. 0,885

204+46.6
 204+11.4
 SK-PW-FAS 659.D(1) (1946)
 24' G.E. & Gran. 1,257
 SK-26 (1956)
 Oil Agg. 1,257

361+17.4
 181+43.6
 HH-66 (1966)
 20' Oil Agg. 3,424
 SHH-S-219 (1) (1961)
 24' G.E. & Gran. 3,424
 HH-1 (T) (1961)
 Gran. 3,424

236+45.7 (SE)
 240+11.4
 SK-PW-FAS 659.D(1) (1946)
 24' G.E. & Gran. 1,257
 SK-26 (1956)
 Oil Agg. 1,257

182+42.9 Blk.
 0+00
 180+24

204+46.6
 204+11.4
 SK-PW-FAS 659.D(1) (1946)
 24' G.E. & Gran. 1,257
 SK-26 (1956)
 Oil Agg. 1,257

116+64.3 (29)
 0+00
 FF-62 (1962)
 20' Oil Agg. Tr. 2,912
 FF-S-1935 (1) (1959)
 24' G.E. & Gran. 2,931

155+00
 FF-69 (1962)
 20' Oil Agg. Tr. 5,119

425+28.5

187+34
 0+00
 2071-P(1)M (1985)
 20' Blk. Mat. Res. 2,596
 P-58 (1958)
 20' Oil Agg. 2,596
 P-S-1622 (1) (1957)
 24' G.E. & Gran. 2,596
 P-1 (T) (1956)
 Gran. 2,596

187+34
 0+00
 2071-P(1)M (1985)
 20' Blk. Mat. Res. 2,596
 P-58 (1958)
 20' Oil Agg. 2,596
 P-S-1622 (1) (1957)
 24' G.E. & Gran. 2,596
 P-1 (T) (1956)
 Gran. 2,596

187+34
 0+00
 2071-P(1)M (1985)
 20' Blk. Mat. Res. 2,596
 P-58 (1958)
 20' Oil Agg. 2,596
 P-S-1622 (1) (1957)
 24' G.E. & Gran. 2,596
 P-1 (T) (1956)
 Gran. 2,596

187+34
 0+00
 2071-P(1)M (1985)
 20' Blk. Mat. Res. 2,596
 P-58 (1958)
 20' Oil Agg. 2,596
 P-S-1622 (1) (1957)
 24' G.E. & Gran. 2,596
 P-1 (T) (1956)
 Gran. 2,596

187+34
 0+00
 2071-P(1)M (1985)
 20' Blk. Mat. Res. 2,596
 P-58 (1958)
 20' Oil Agg. 2,596
 P-S-1622 (1) (1957)
 24' G.E. & Gran. 2,596
 P-1 (T) (1956)
 Gran. 2,596

187+34
 0+00
 2071-P(1)M (1985)
 20' Blk. Mat. Res. 2,596
 P-58 (1958)
 20' Oil Agg. 2,596
 P-S-1622 (1) (1957)
 24' G.E. & Gran. 2,596
 P-1 (T) (1956)
 Gran. 2,596

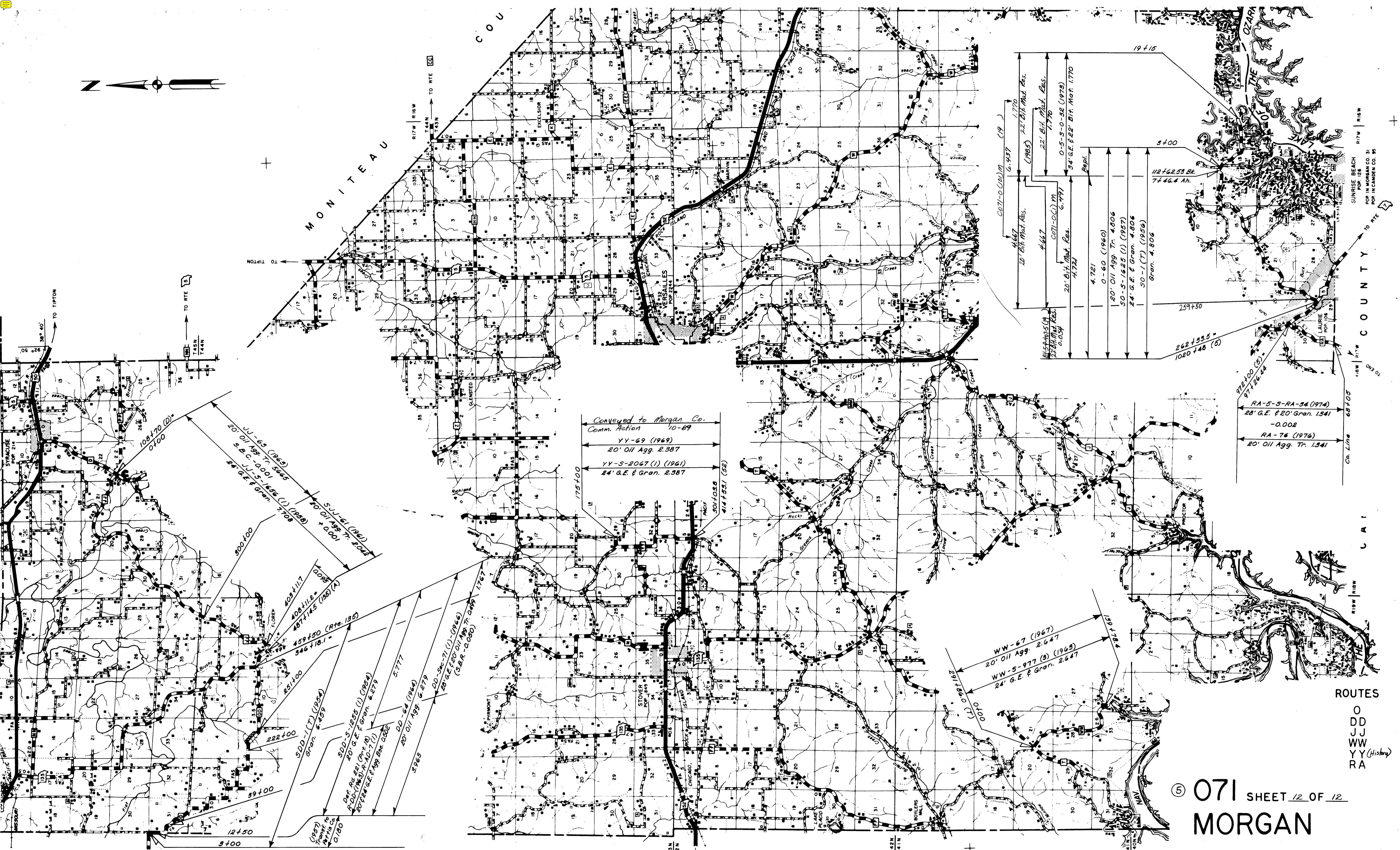
187+34
 0+00
 2071-P(1)M (1985)
 20' Blk. Mat. Res. 2,596
 P-58 (1958)
 20' Oil Agg. 2,596
 P-S-1622 (1) (1957)
 24' G.E. & Gran. 2,596
 P-1 (T) (1956)
 Gran. 2,596

187+34
 0+00
 2071-P(1)M (1985)
 20' Blk. Mat. Res. 2,596
 P-58 (1958)
 20' Oil Agg. 2,596
 P-S-1622 (1) (1957)
 24' G.E. & Gran. 2,596
 P-1 (T) (1956)
 Gran. 2,596

187+34
 0+00
 2071-P(1)M (1985)
 20' Blk. Mat. Res. 2,596
 P-58 (1958)
 20' Oil Agg. 2,596
 P-S-1622 (1) (1957)
 24' G.E. & Gran. 2,596
 P-1 (T) (1956)
 Gran. 2,596

ROUTES
 K
 N
 P
 FF
 HH
 NN
 PP

⑤ 071 SHEET 11 OF 12
 MORGAN



MONITEAU

C O U

SUNRISE BEACH
POP. 128
POP. IN MORGAN CO. 31
POP. IN CAMDEN CO. 95

ROUTES
O
DD
JJ
WW
YY
RA (History)

071 SHEET 12 OF 12
MORGAN

Conveyed to Morgan Co.
Comm. Action 10-89
YY-69 (1969)
20' Oil Agg. 2.387
YY-5-2067 (1) (1961)
24' G.E. & Gran. 2.387

WW-67 (1967)
20' Oil Agg. 2.647
WW-5-977 (3) (1963)
24' G.E. & Gran. 2.647

RA-5-5-RA-34 (1974)
28' G.E. & 20' Gran. 1.541
-0.002
RA-76 (1976)
20' Oil Agg. Tr. 1.541

6.437
1.770
20' Oil Mat. Res.
4.667
22' Oil Mat. Res.
4.667
COTI-O.C.I.M
6.797
20' Oil Mat. Res.
4.721
0-60 (1960)
20' Oil Agg. Tr. 4.806
50-5-1625 (1) (1957)
24' G.E. & Gran. 4.806
50-1 (7) (1956)
Gran. 4.806
9400
112+62.53 BK.
74.66.4 Ah.
259+50
262+53.5 =
1020+48 (5)

108+70 (D)
0100
JJ-63 (1962)
20' Oil Agg. Tr. 5.065
S.J.C.-00-01 (1958)
24' G.E. & Gran. 7.00
SUJ-51 (1961)
100' x 20' Oil Tr. 5.072

405+117
408+111.2 =
487+145 (35)(74)
459+50 (Rte. 135)
346+18.1 =
251+00
SDD-1 (7) (1954)
Gran. 6.409
SDD-5-1253 (1) (1954)
20' G.E. & Gran. 6.279
Def. Rd. 82 (Part. 19)
R.D.D. (1953) P. AD-1 (1)
20' Oil Agg. Tr. 6.279
DD-64 (1944)
20' Oil Agg. 6.279
DD-50-71 (1) (1966)
20' G.E. & 20' Oil Agg. Tr. 4.999
(S.B.R.-0-050)

(1957)
Transfer to
Morgan Co.
0.180

12+50
3+00

175+00

201+03.8
414+531 (52)

291+161
0070

972+100 (5)
971+26.44

687+03
Co. Line