

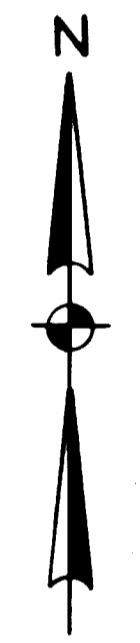
STATE OF KANSAS

LAWRENCE COUNTY

STATE OF MISSOURI

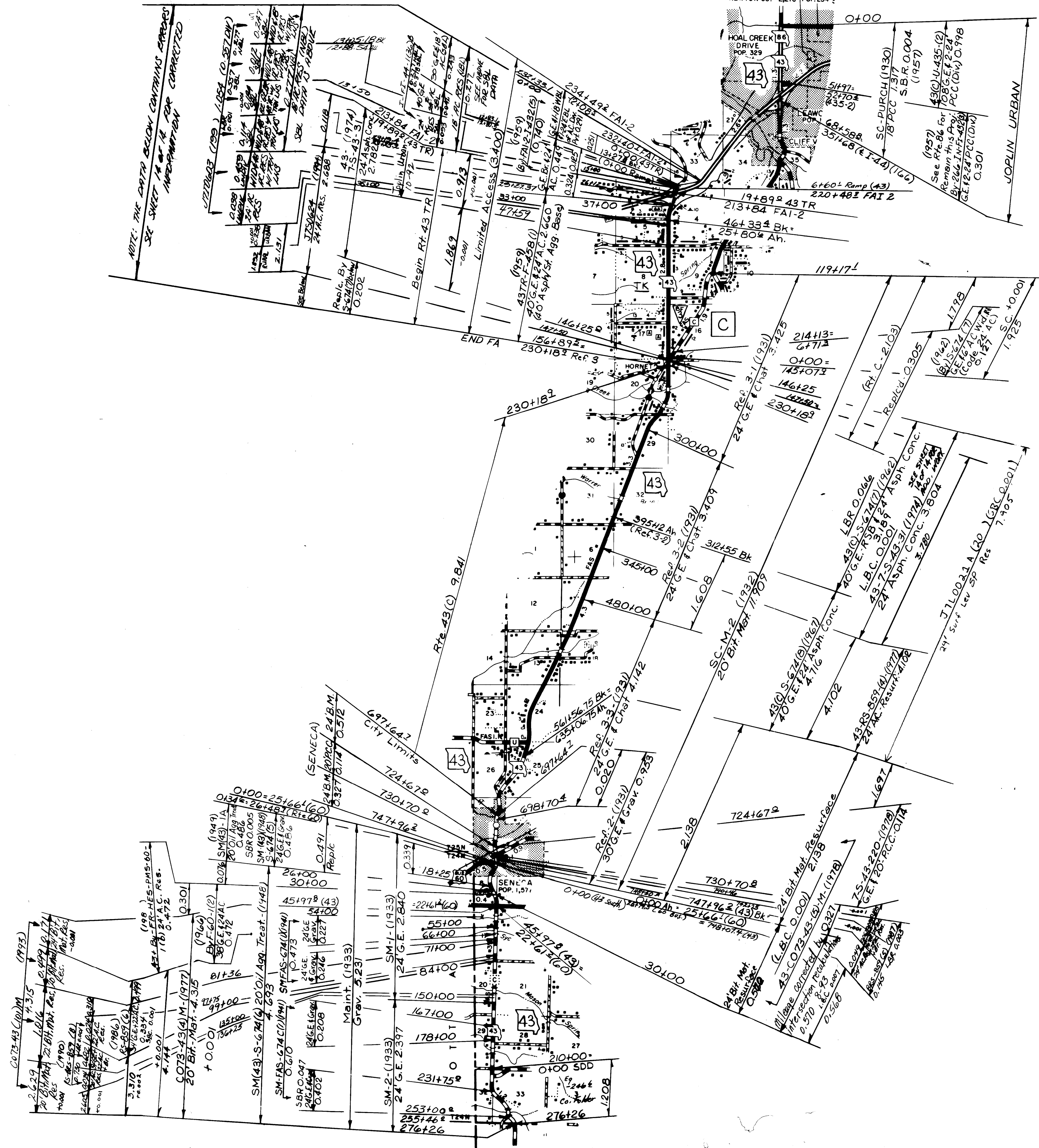
073
 NEWTON
 SHEET 1 OF 14

ROUTES: 37, I-44,
 B, H, M, T, MM



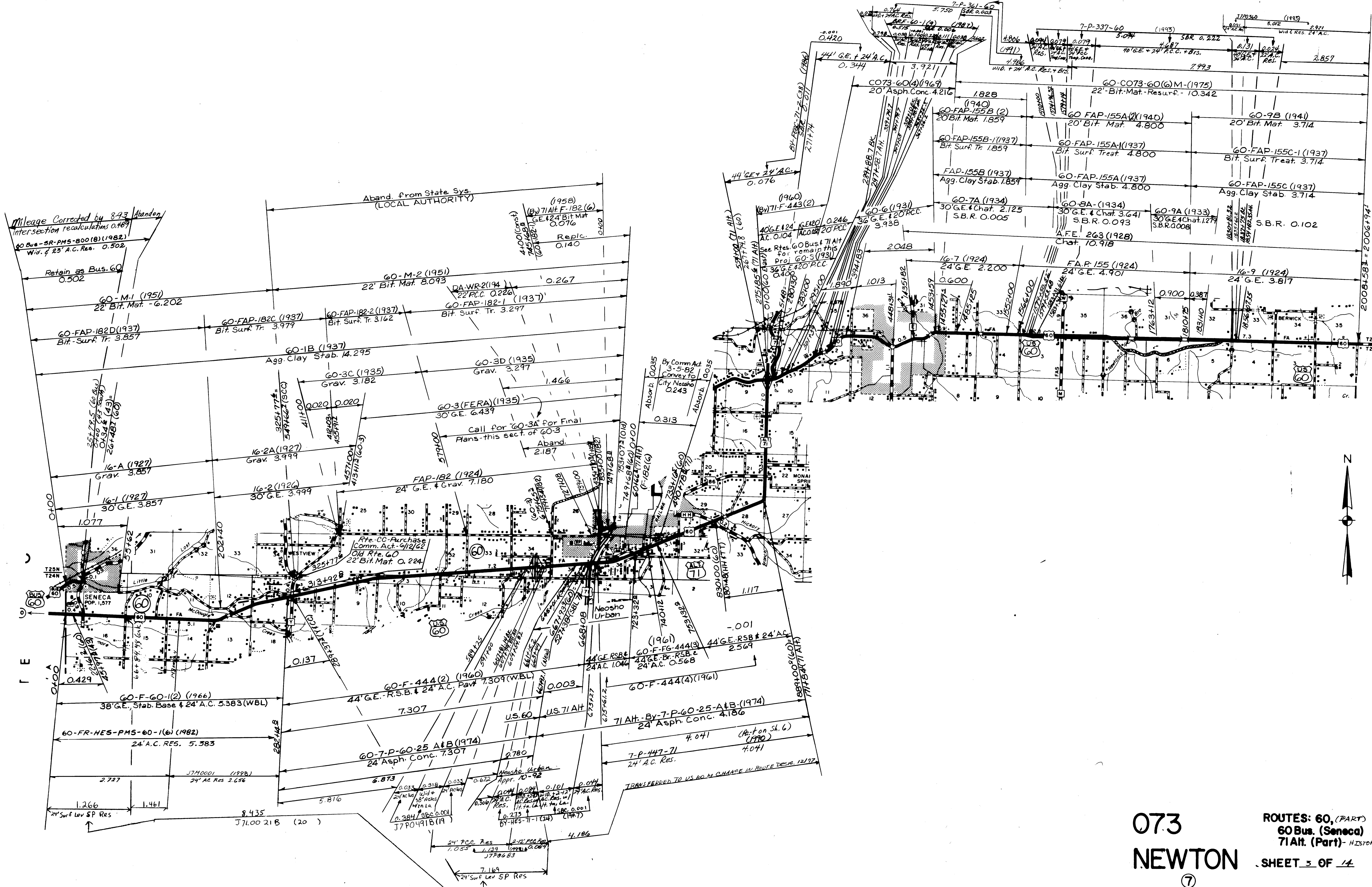
MCDONALD

7



NOTE: THE DATA BELOW CONTAINS ERRORS
SEE SHEET 14 OF 14 FOR CORRECTED
INFORMATION

JOPLIN POP. 84
OR. 39,256
JASPER CO. 37,040
NEWTON CO. 2,216
MIDWAY POP. 234



Mileage Corrected by 8.93
 Intersection recalculations 0.189
 60 Bus - SR-PMS-800 (B) (1982)
 Wid. of 23' A.C. Res. 0.502
 Retain as Bus. 60
 0.502

60-M-1 (1951)
 22' Bit. Mat. - 6.202

60-FAP-182D (1937)
 Bit. Surf. Tr. 3.857

60-M-2 (1951)
 22' Bit. Mat. 8.093

60-FAP-182C (1937)
 Bit. Surf. Tr. 3.979

60-FAP-182-2 (1937)
 Bit. Surf. Tr. 3.162

60-1B (1937)
 Agg. Clay Stab. 14.295

60-3C (1935)
 Grav. 3.182

60-3 (1935)
 Grav. 3.297

60-3 (FERA) (1935)
 30' G.E. 6.439

Call for '60-3A' for Final
 Plans - this sect. of 60-3
 Aband. 2.187

16-A (1927)
 Grav. 3.857

16-2 (1926)
 30' G.E. 3.999

16-1 (1927)
 30' G.E. 3.857

16-2A (1927)
 Grav. 3.999

60-F-444(2) (1960)
 44' G.E. - R.S.B. & 24' A.C. Pavt 7.309 (WBL)

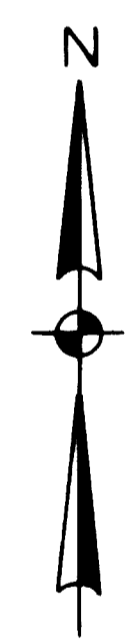
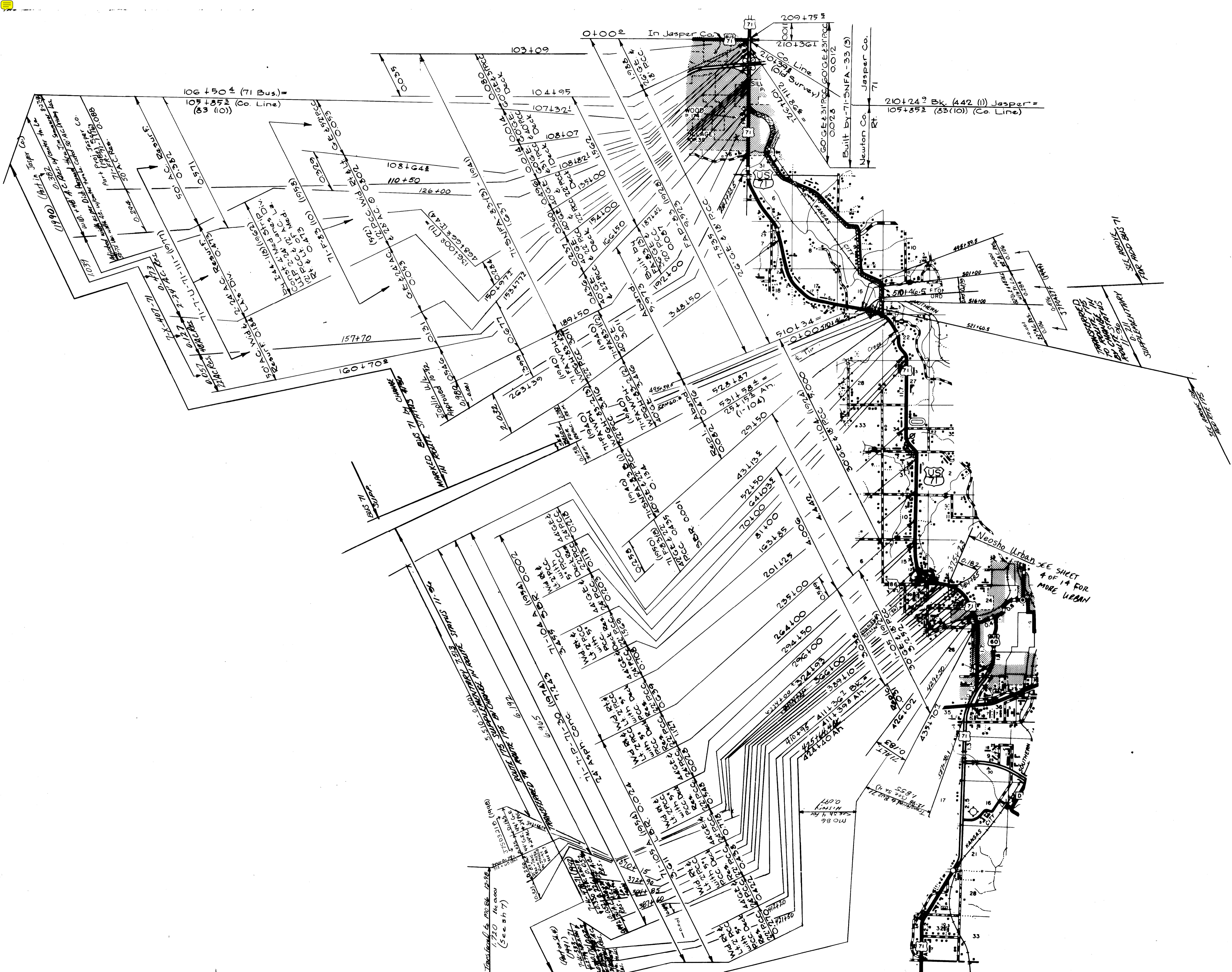
60-F-444(4) (1961)
 44' G.E. - R.S.B. & 24' A.C. 2.569

60-F-444(3) (1961)
 44' G.E. - R.S.B. & 24' A.C. 2.569

60-F-444(1) (1961)
 44' G.E. - R.S.B. & 24' A.C. 2.569

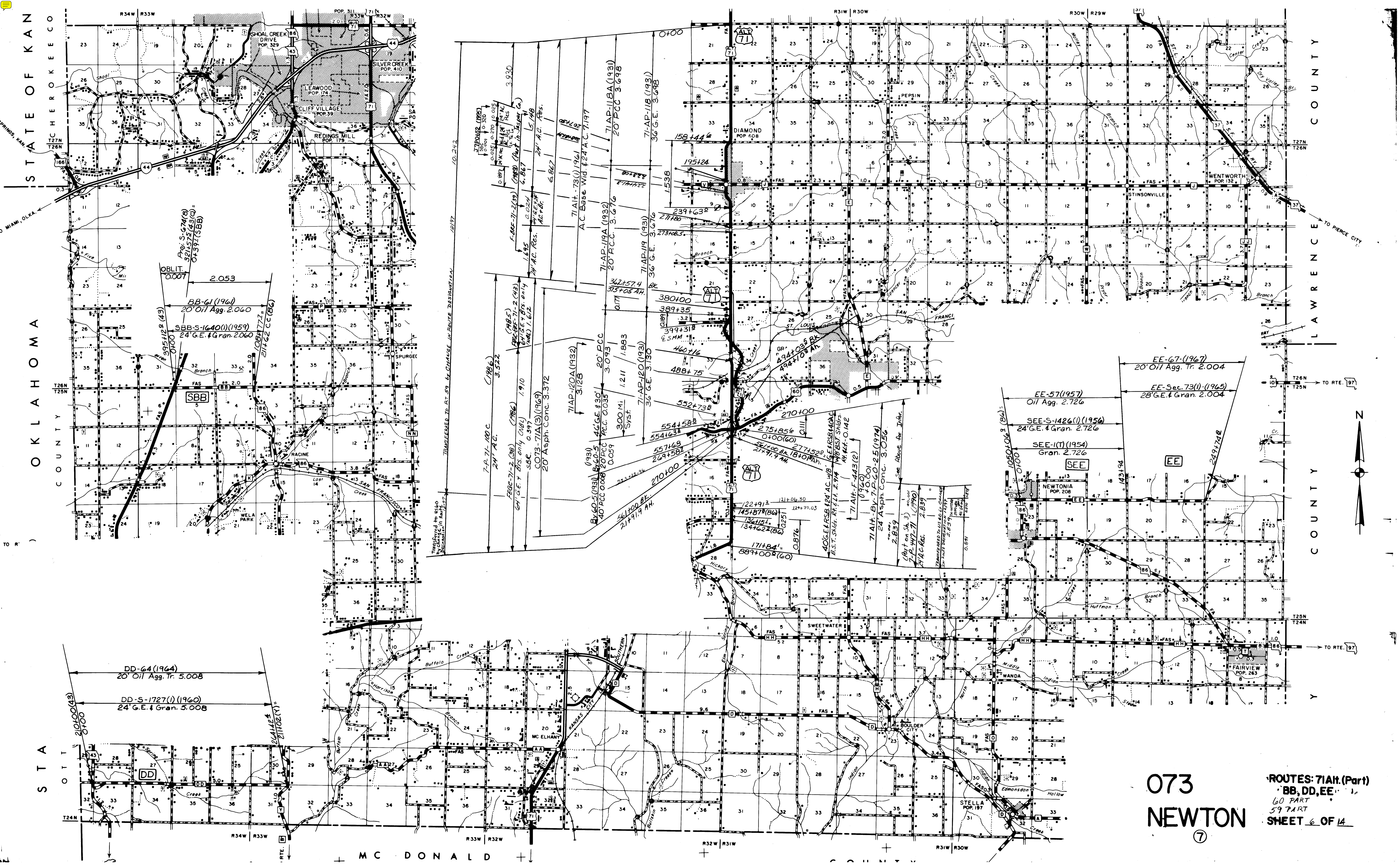
60-F-444(2) (1960)
 44' G.E. - R.S.B. & 24' A.C. Pavt 7.309 (WBL)

60-F-444(4) (1961)
 44' G.E. - R.S.B. & 24' A.C. 2.569



073
 NEWTON
 ⑦

ROUTE: 71(Part) HISTORY
 BUS 71
 175
 8th Part History
 SHEET 5 OF 14



STATE OF KANSAS

OKLAHOMA

STATE OF OKLAHOMA

LAWRENCE COUNTY

TO PIERCE CITY

TO RTE. 197

TO RTE. 197

TO RTE. 197

TO RTE. 197

TO RTE. 197

TO RTE. 197

TO RTE. 197

TO RTE. 197

TO RTE. 197

TO RTE. 197

TO RTE. 197

TO RTE. 197

TO RTE. 197

TO RTE. 197

TO RTE. 197

TO RTE. 197

TO RTE. 197

TO RTE. 197

TO RTE. 197

TO RTE. 197

TO RTE. 197

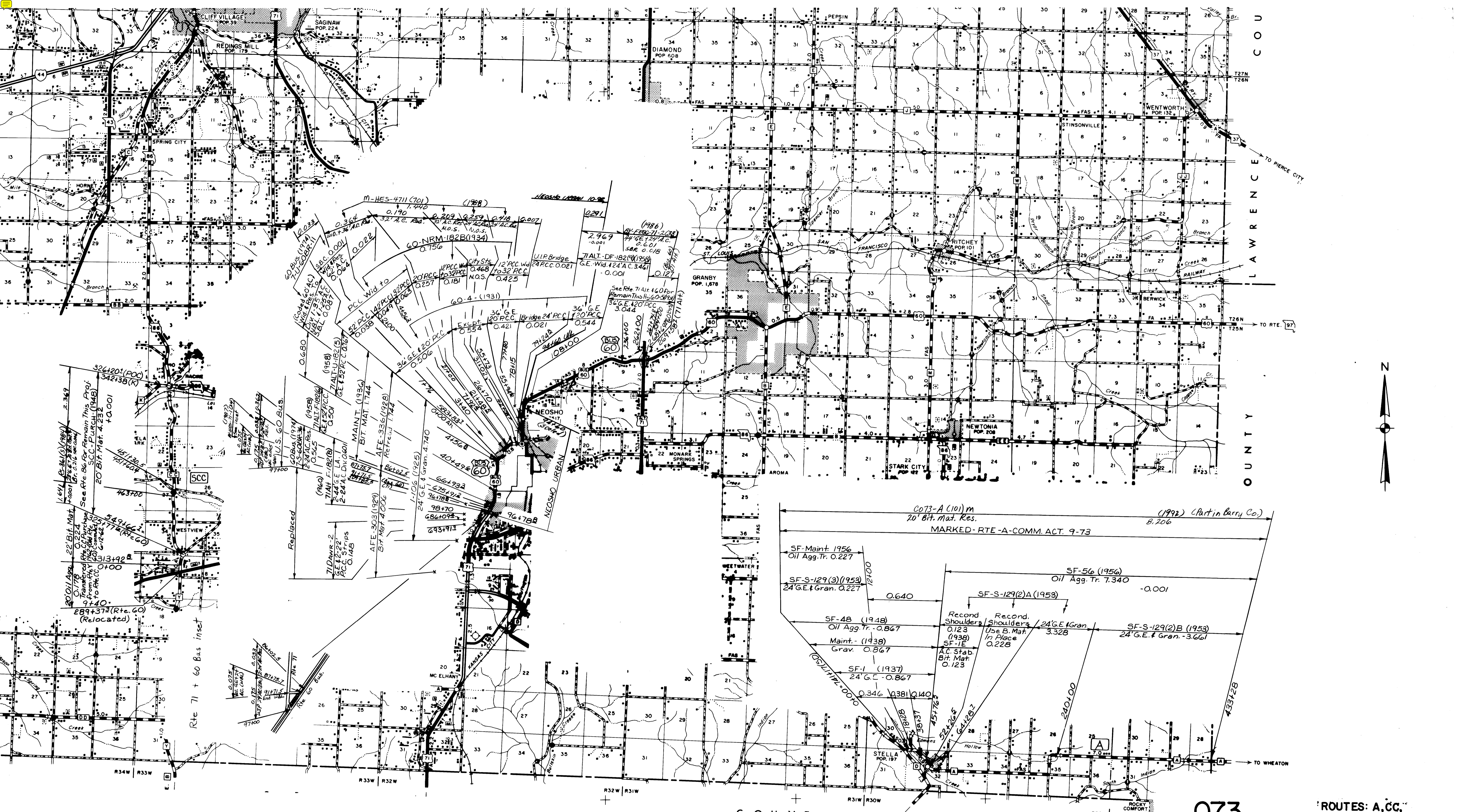
TO RTE. 197

TO RTE. 197

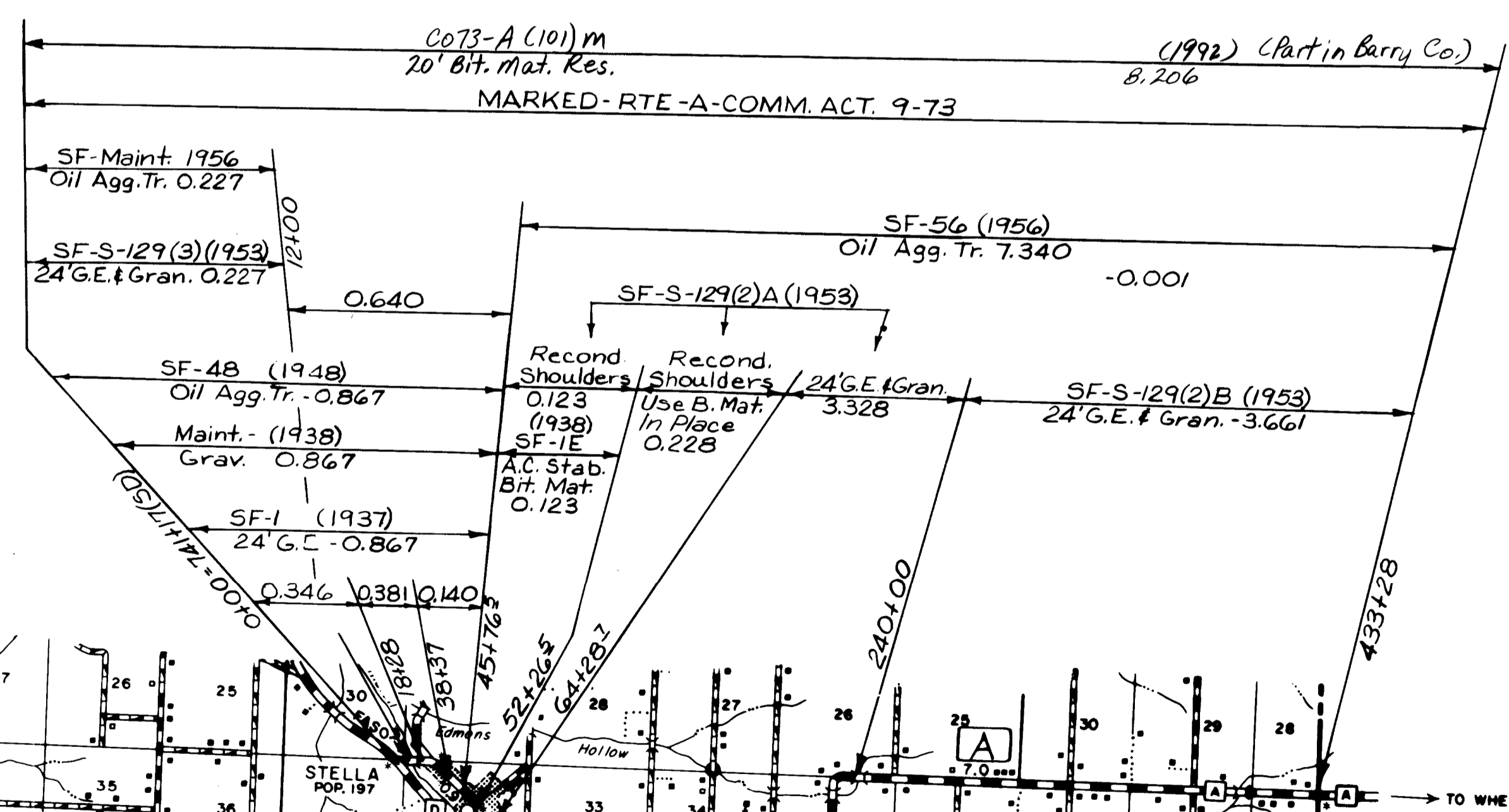
TO RTE. 197

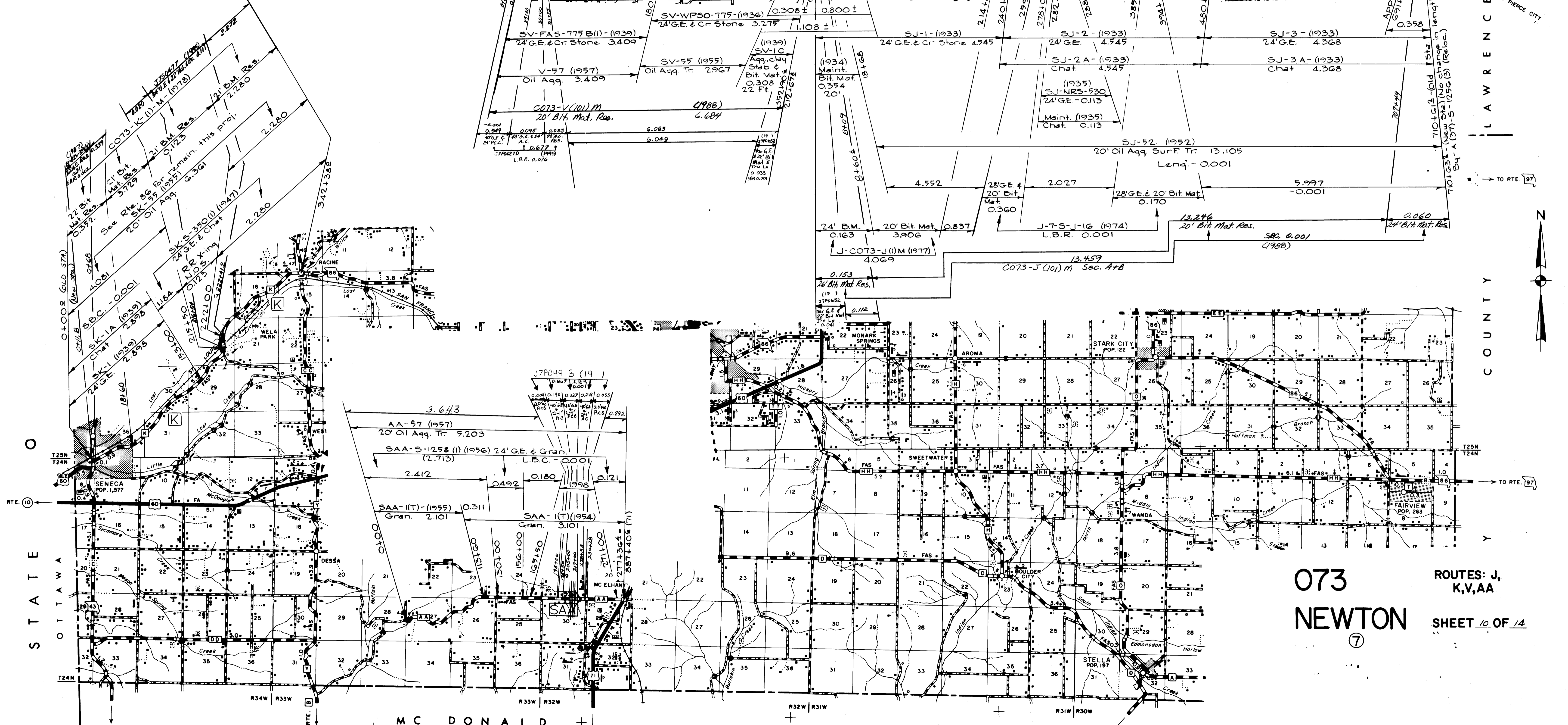
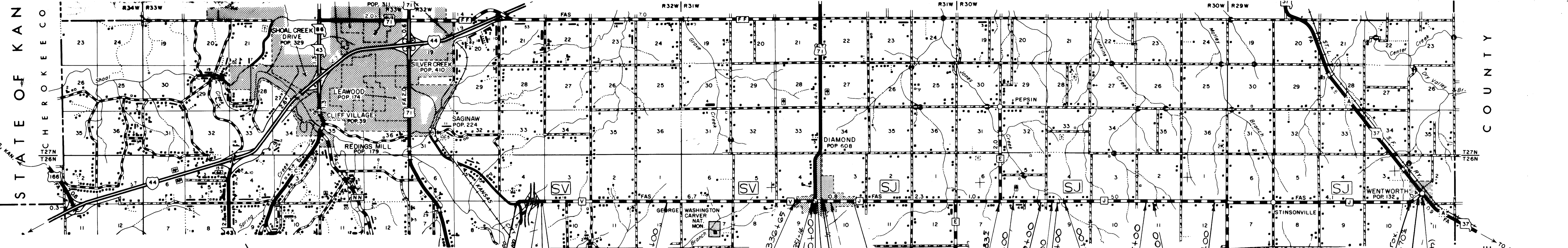
TO RTE. 197

073
NEWTON
⑦
ROUTES: 71AH (Part)
BB, DD, EE
60 PART
59 PART
SHEET 6 OF 14

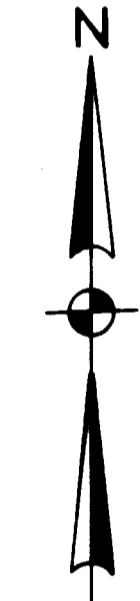


Rte 71 + 60 Bus inset





073
 NEWTON
 ROUTES: J, K, V, AA
 SHEET 10 OF 14



STATE OF KAN

LAWRENCE COUNTY

STATE OF KAN

LAWRENCE COUNTY

MC DONALD

