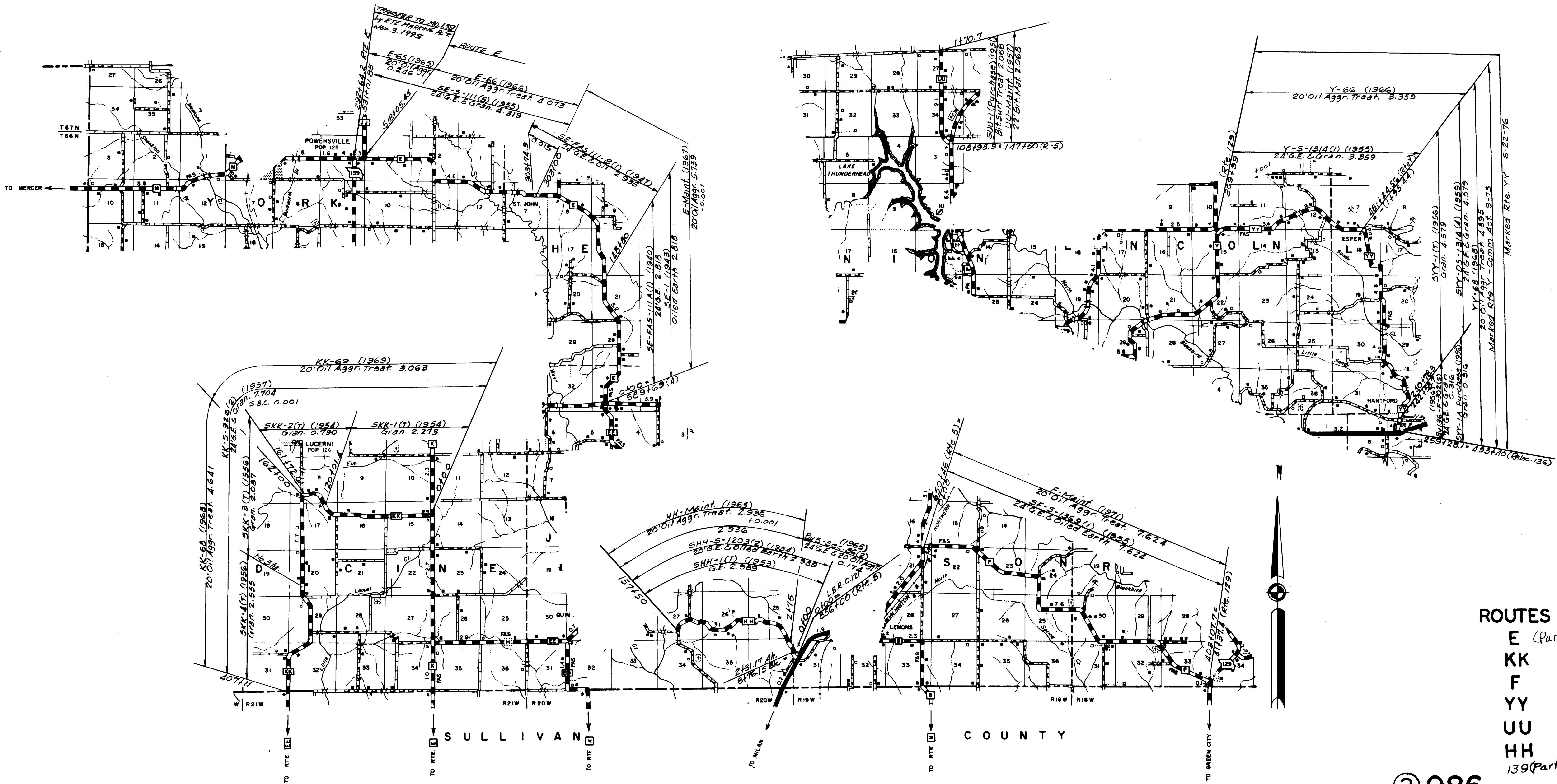


ROUTE 136 PART

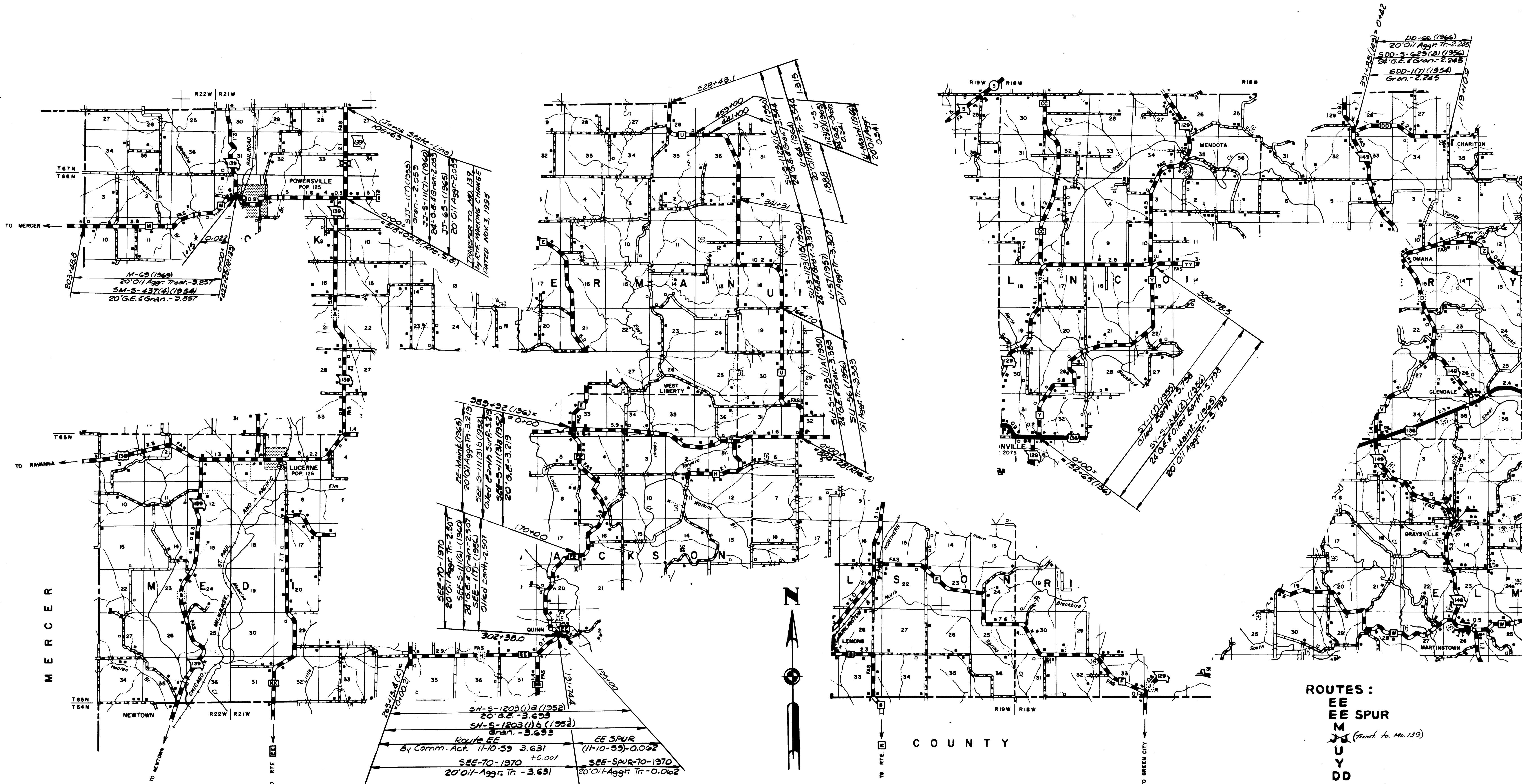
© 086 SHEET 4 OF 9
 PUTNAM



ROUTES
 E (Part)
 KK
 F
 YY
 UU
 HH
 139 (Part)

② 086 SHEET 6 OF 9
 PUTNAM

83° 20'
 40° 20'



TO MERCER

TO RAVANNA

MERCER

COUNTY

TO GREEN CITY

ROUTES:
 EE
 EE SPUR
 M (Trans. to Mo. 139)
 U
 Y
 DD
 139 (Part)

② 086 SHEET NO. 7 OF 9
 PUTNAM

83° 20'
 40° 20'

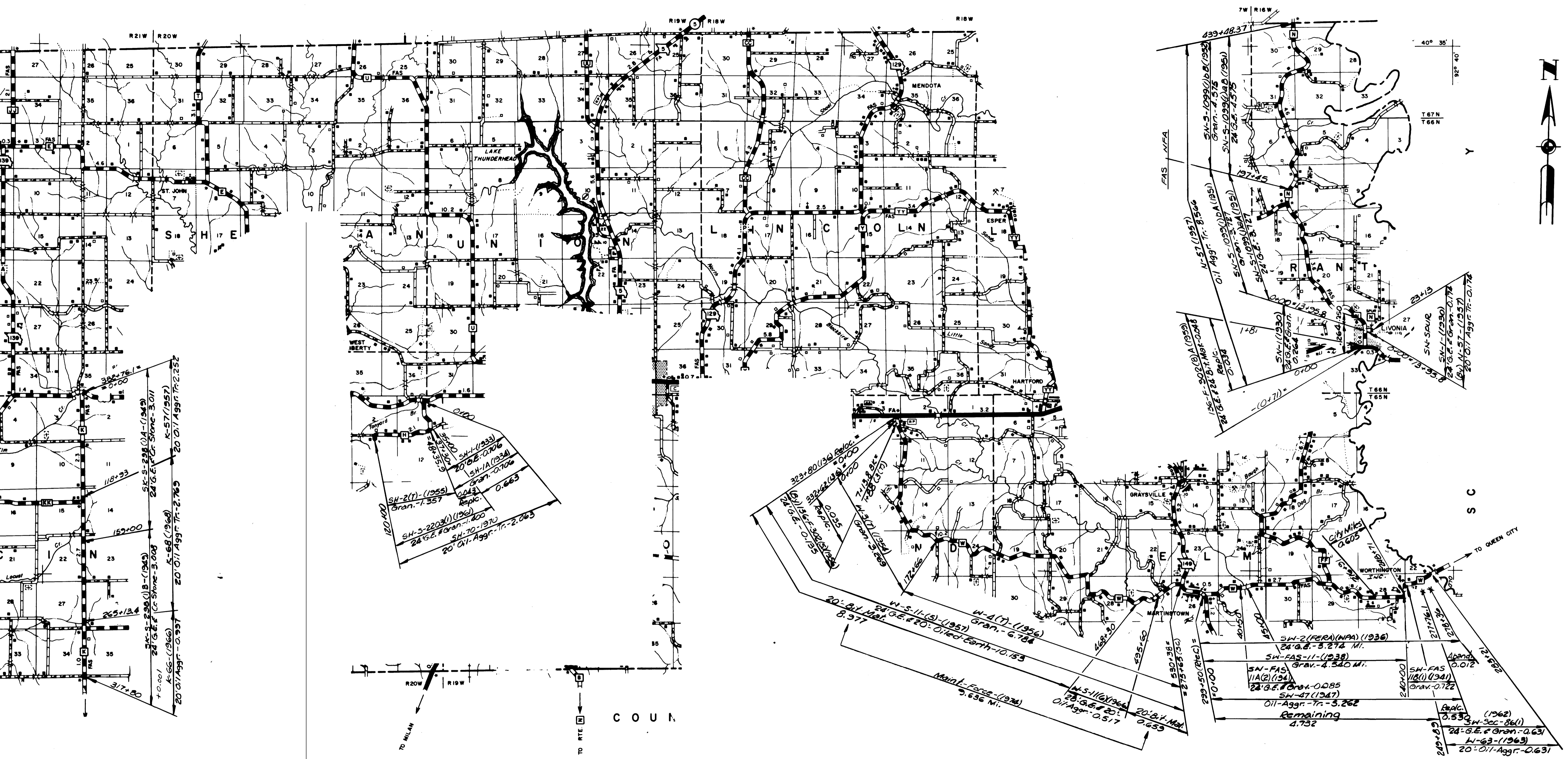
SH-S-1203(1)a (1952)
 20' G.E. - 3.693
 SH-S-1203(1)b (1952)
 20' G.E. - 3.693
 Route EE
 By Comm. Act. 11-10-59 3.631
 SEE-70-1970 +0.001
 20' Oil-Aggr. Tr. - 3.631
 EE SPUR
 (11-10-59) - 0.062
 SEE-SPUR-70-1970
 20' Oil-Aggr. Tr. - 0.062

SEE-70-1970
 20' Oil-Aggr. Tr. - 2.501
 SEE-S-111(6) - (1960)
 20' Oil-Aggr. Tr. - 2.501
 SEE-1(1) - (1956)
 20' G.E. - 2.501
 Oiled Earth - 2.501
 SEE-S-111(3)a (1952)
 20' G.E. - 3.219
 SEE-S-111(3)b (1952)
 20' G.E. - 3.219
 Oiled Earth - 3.219

TRANSFER TO MO. 139
 BY RITE MARKING CHANGE
 DATED NOV. 3, 1995

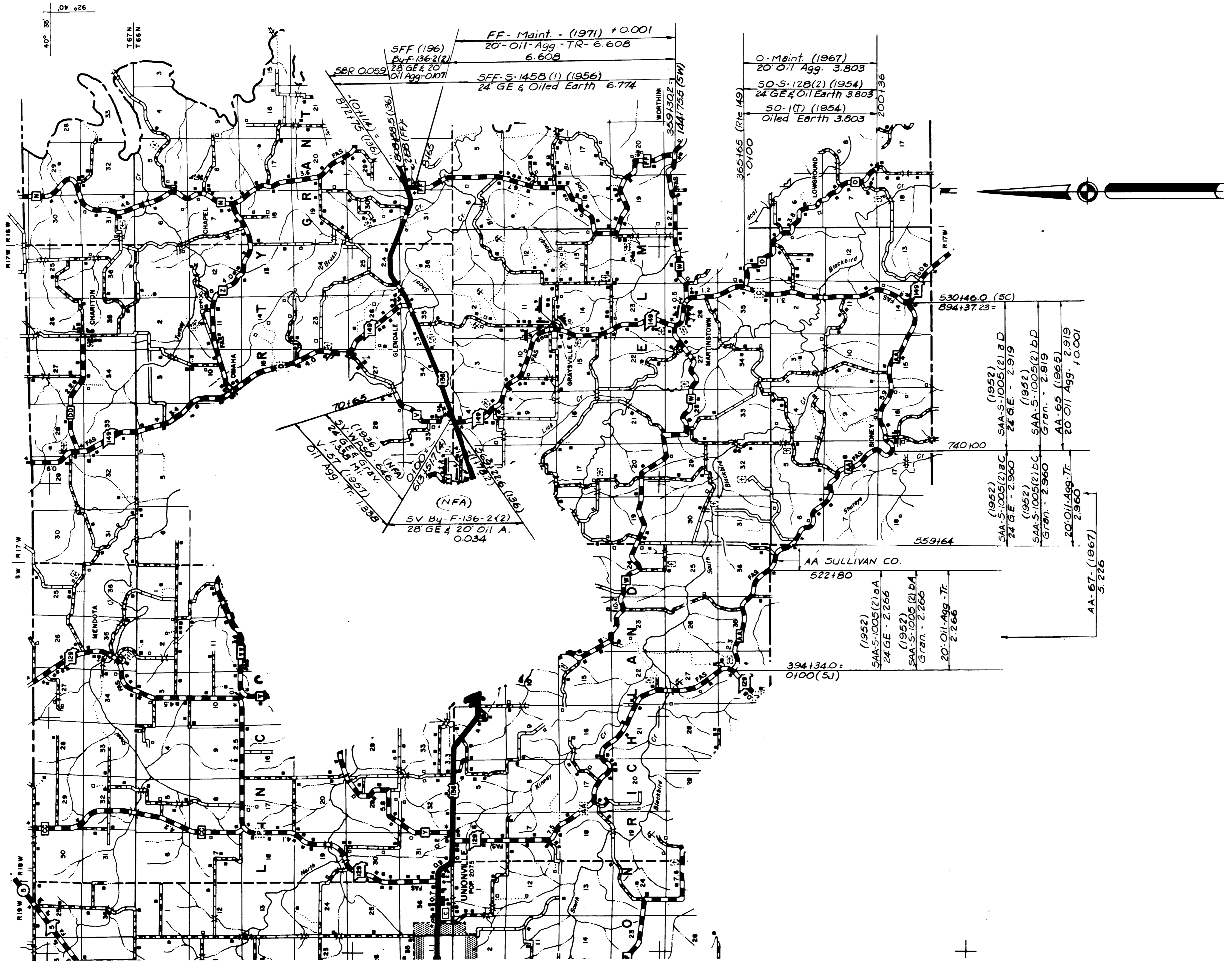
SH-S-1203(1) (1952)
 20' G.E. - 3.693
 SH-S-1203(1) (1952)
 20' G.E. - 3.693
 Y-Maint. - (1966)
 20' Oil-Aggr. Tr. - 3.798

DD-66 (1966)
 20' Oil-Aggr. Tr. - 2.245
 SDD-9-629 (3) (1956)
 20' G.E. - 2.245
 SDD-1(7) (1954)
 Gran. - 2.245



ROUTES:
 H
 K
 N
 Z
 W SPUR

U N I T Y



FF - Maint. - (1971) +0.001
 20' Oil Agg - TR - 6.608
 6.608

SFF (196)
 By F-136-2(2)
 28 GE & 20'
 Oil Agg - 0.001

SBR 0.059

SFF-S-1458 (1) (1956)
 24' GE & Oiled Earth 6.774

359/302

O - Maint. (1967)
 20' Oil Agg. 3.803

50-S-128(2) (1954)
 24' GE & Oil Earth 3.803

50-1(T) (1954)
 Oiled Earth 3.803

(NFA)
 SV By F-136-2(2)
 28 GE & 20' Oil A.
 0.034

701.65

(1952)
 SAA-S-1005(2) BC
 24' GE - 2.960

(1952)
 SAA-S-1005(2) BC
 Gran. - 2.919

(1952)
 SAA-S-1005(2) BC
 Gran. - 2.919

AA-65 (1965)
 20' Oil Agg. 2.919

AA-67 (1967)
 20' Oil Agg. 2.960

5.226

530146.0 (SC)
 894+37.23 =

740+00

559164

AA SULLIVAN CO.
 522180

394+34.0 =
 0100(S)

(1952)
 SAA-S-1005(2) BA
 24' GE - 2.266

(1952)
 SAA-S-1005(2) BA
 Gran. - 2.266

20' Oil Agg. - Tr.
 2.266

ROUTES
 O
 V
 AA
 FF