

J3P0541 (Part in Audrain Co.)
 L.B.C. NOM 7.539 (1994)

7.487
 Wid & 24' A.C. Res.
 F-19-4(2) Sec. A+B (Part in Audrain Co.) (1983)
 22' A.C. Res. 7.487

19-C004-19(2)A (1972)
 22' A.C. RESURF. 7.487

19-F-383(2)(A&B)(1962)
 38' GE. R.S.B. & 22' ASPH CONC. 7.487
 S.B.R. 0.007

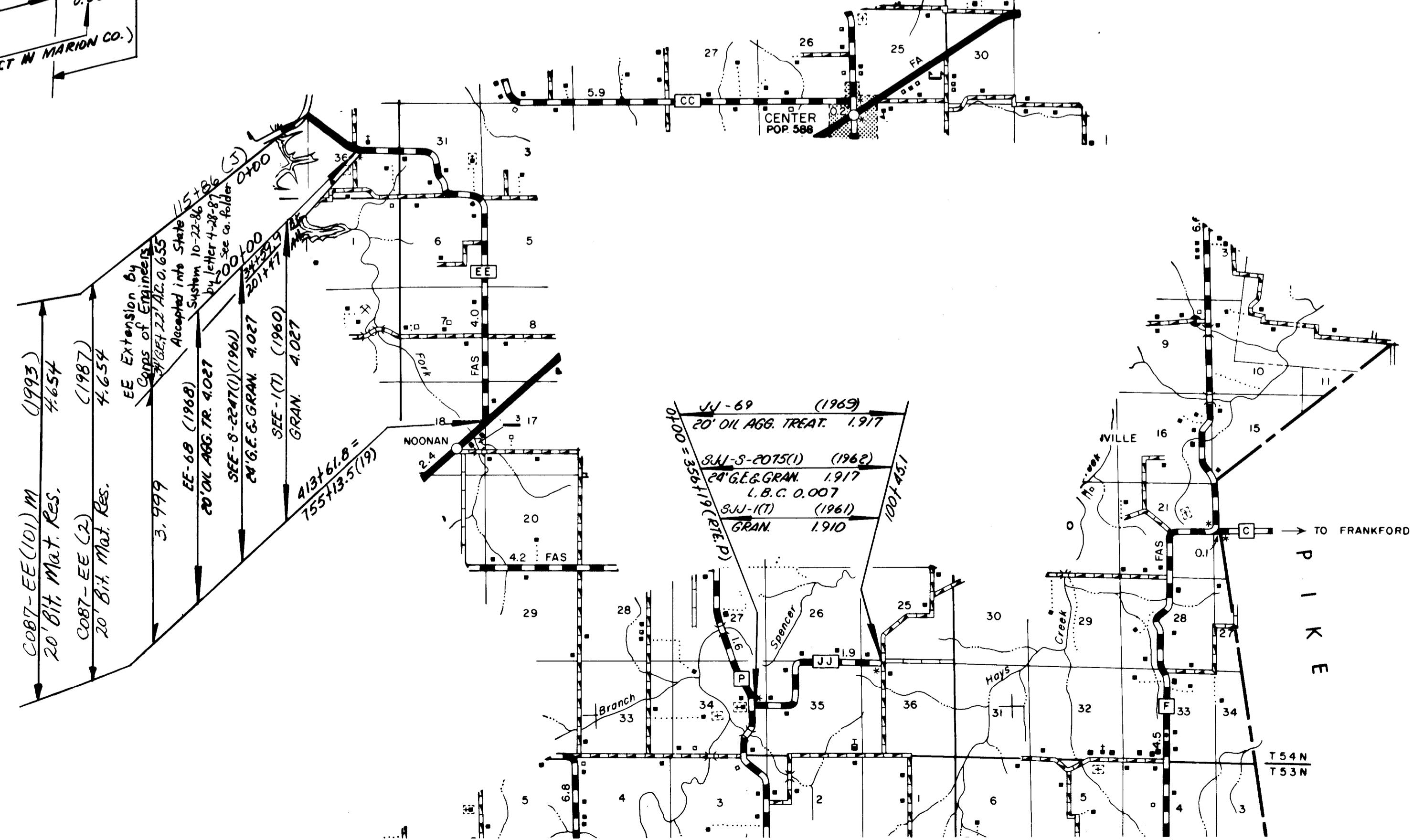
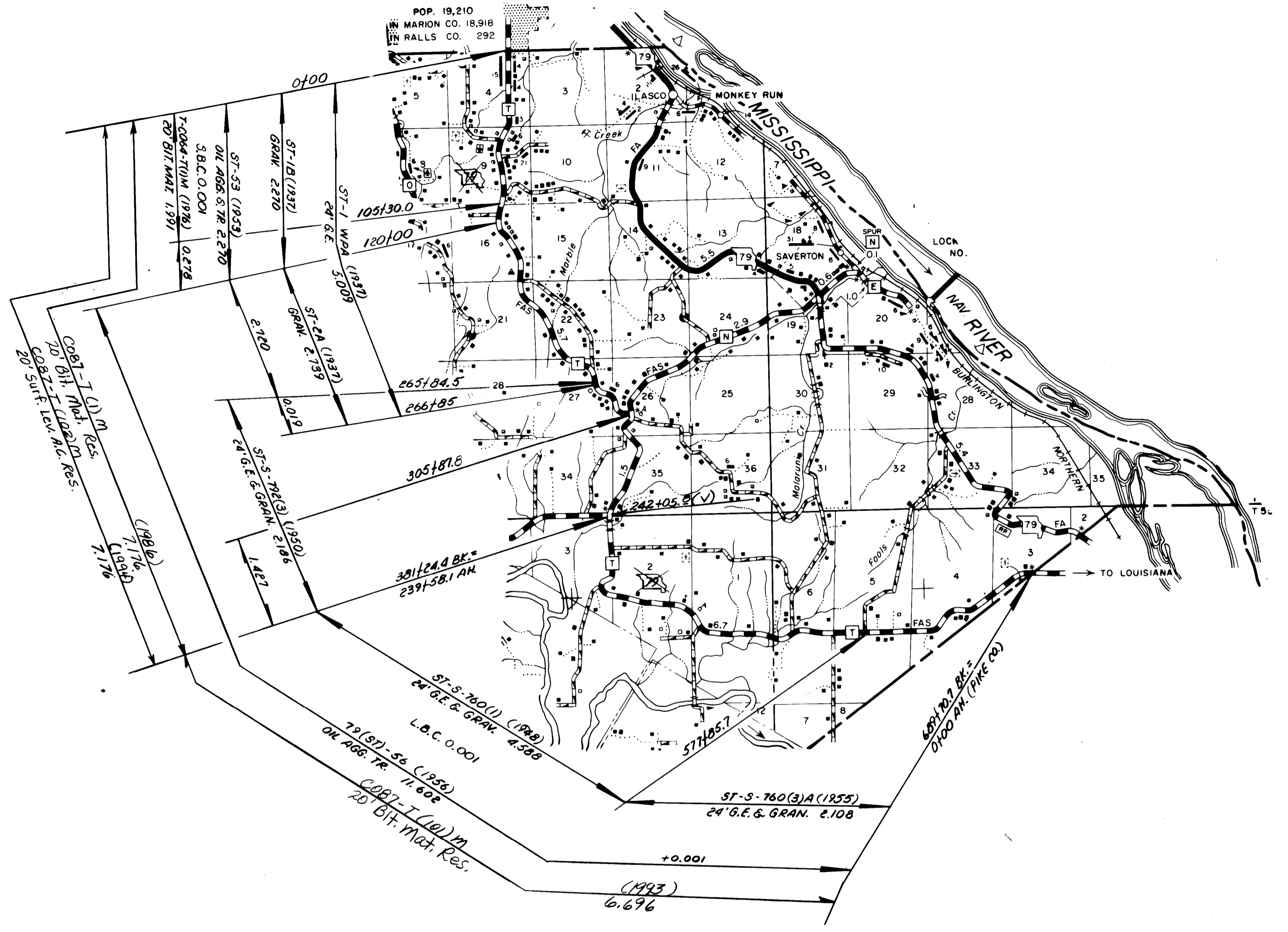
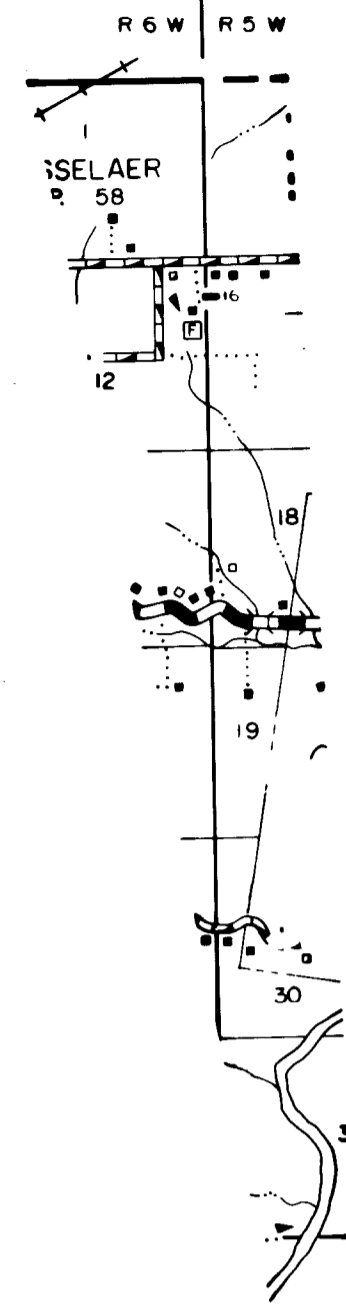
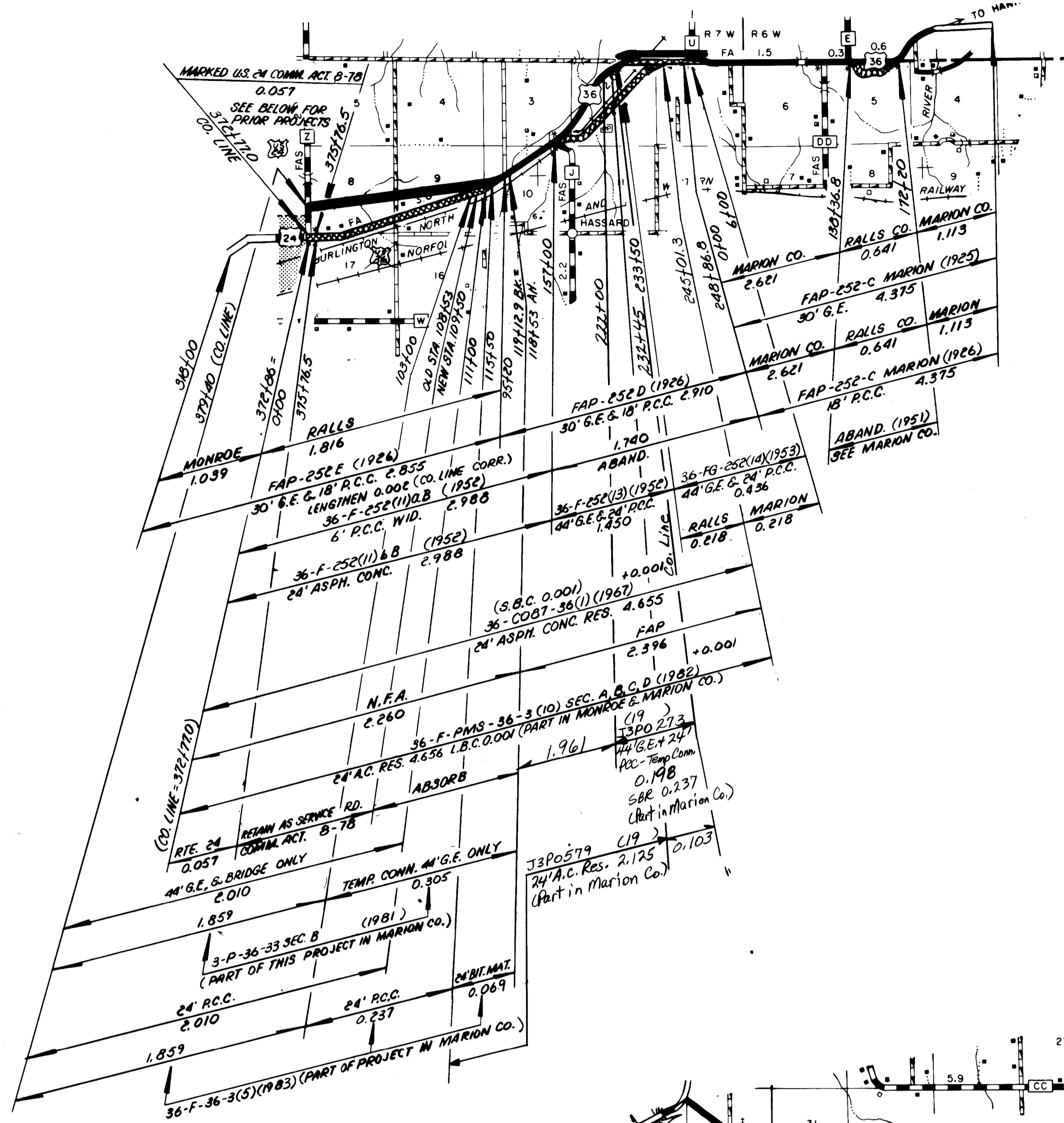
19-10A (1933)
 OIL MAT. 7.345

19-61 (1931)
 30' GE. & GRAV. 4.797

19-62 (1931)
 30' GE. & GRAV. 2.652

ROUTES 19
 54

③
 087 SHEET 1 OF 11
 RALLS

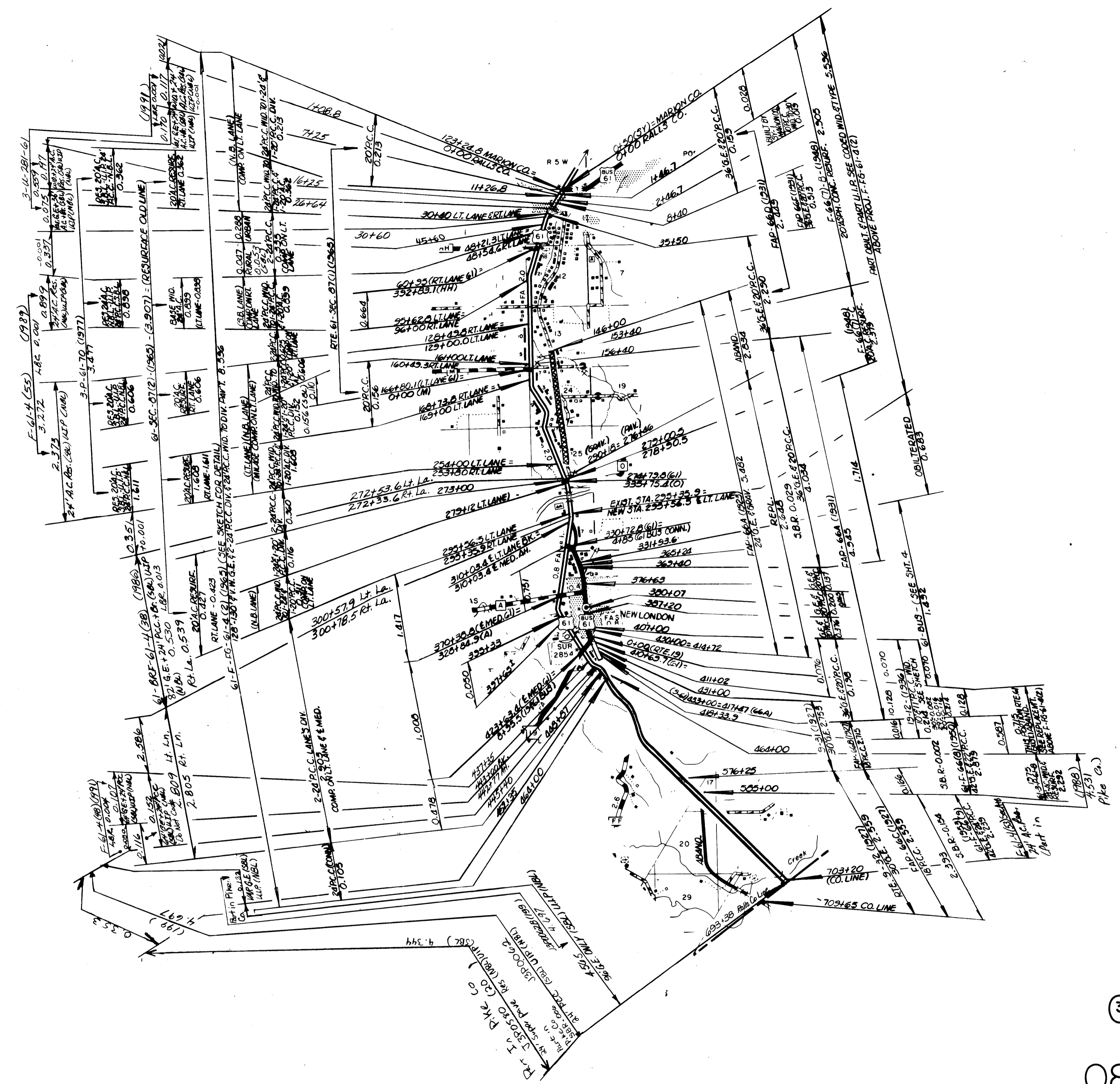
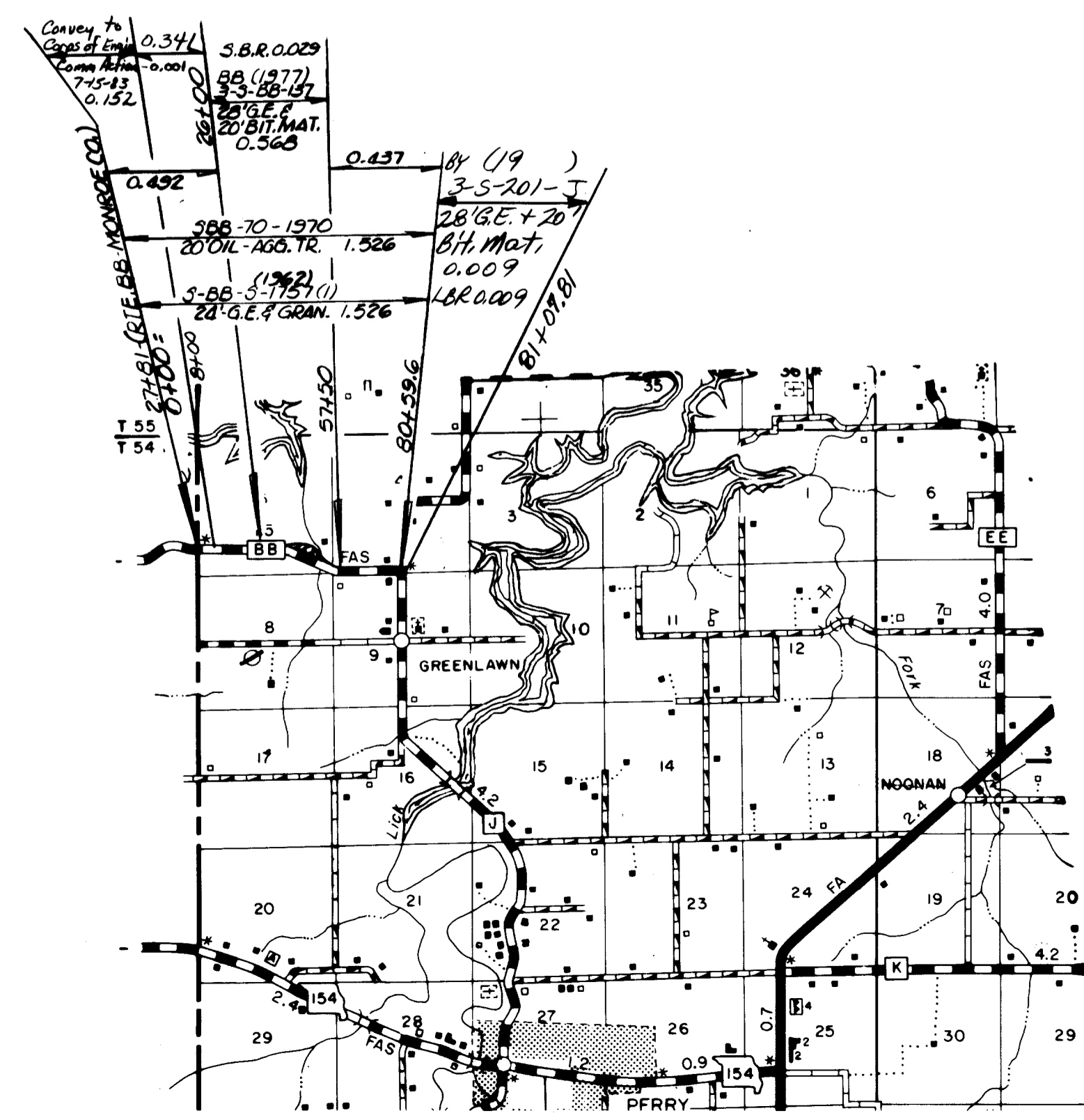
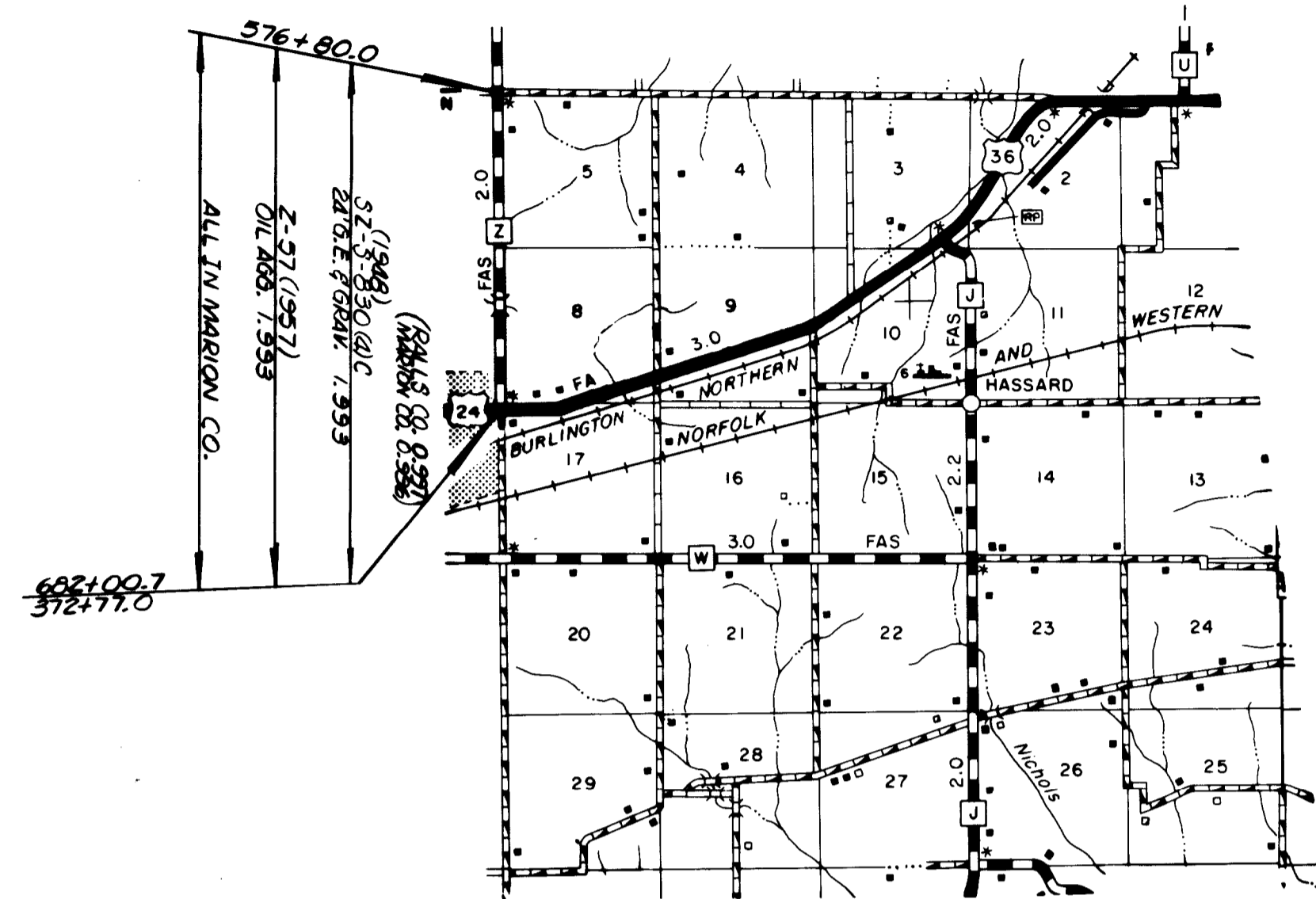


ROUTES 36
T
EE
JJ
24(PART)

3

087 SHEET 2 OF 11

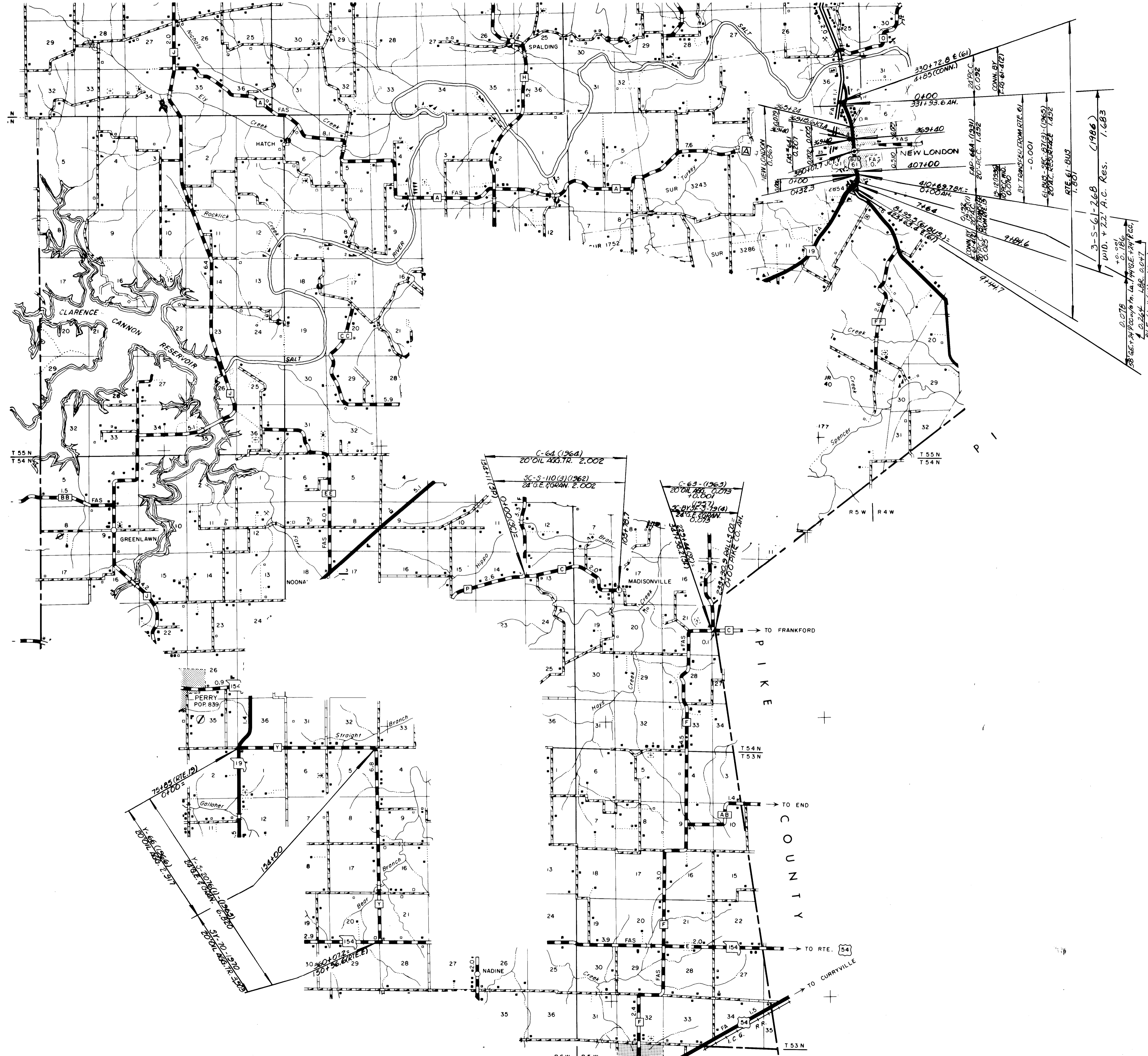
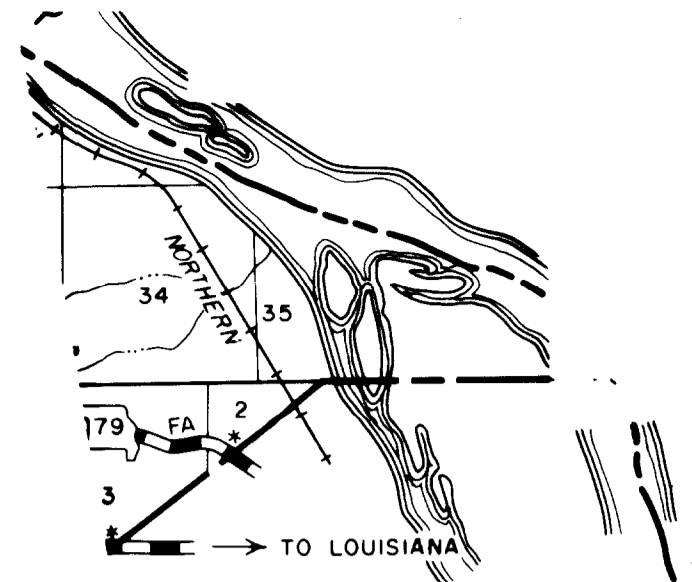
RALLS



ROUTES 61
Z(Part)
BB

(3)
087
RALLS

SHEET 3 OF 11

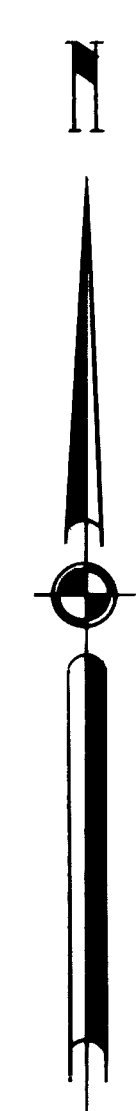
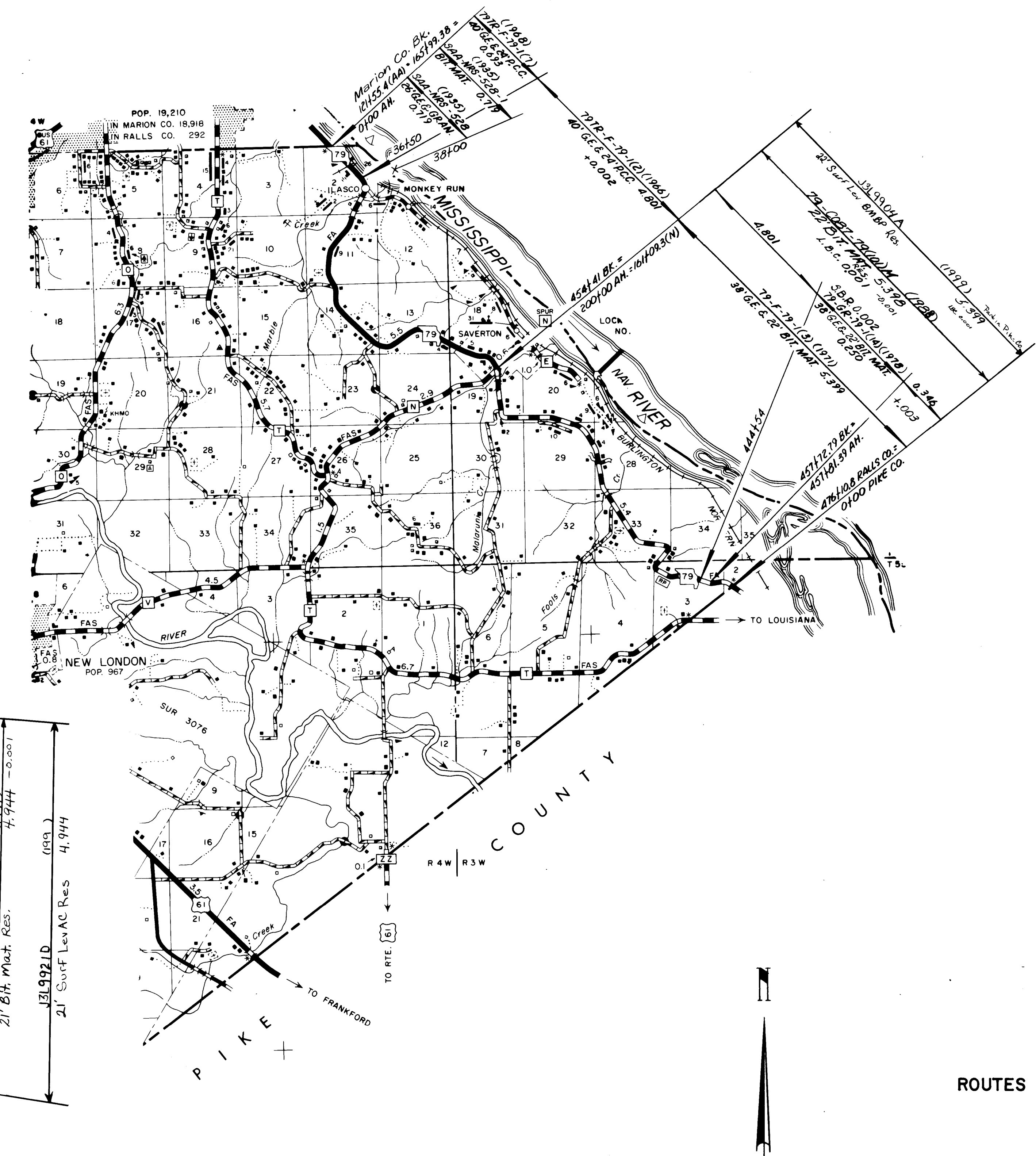
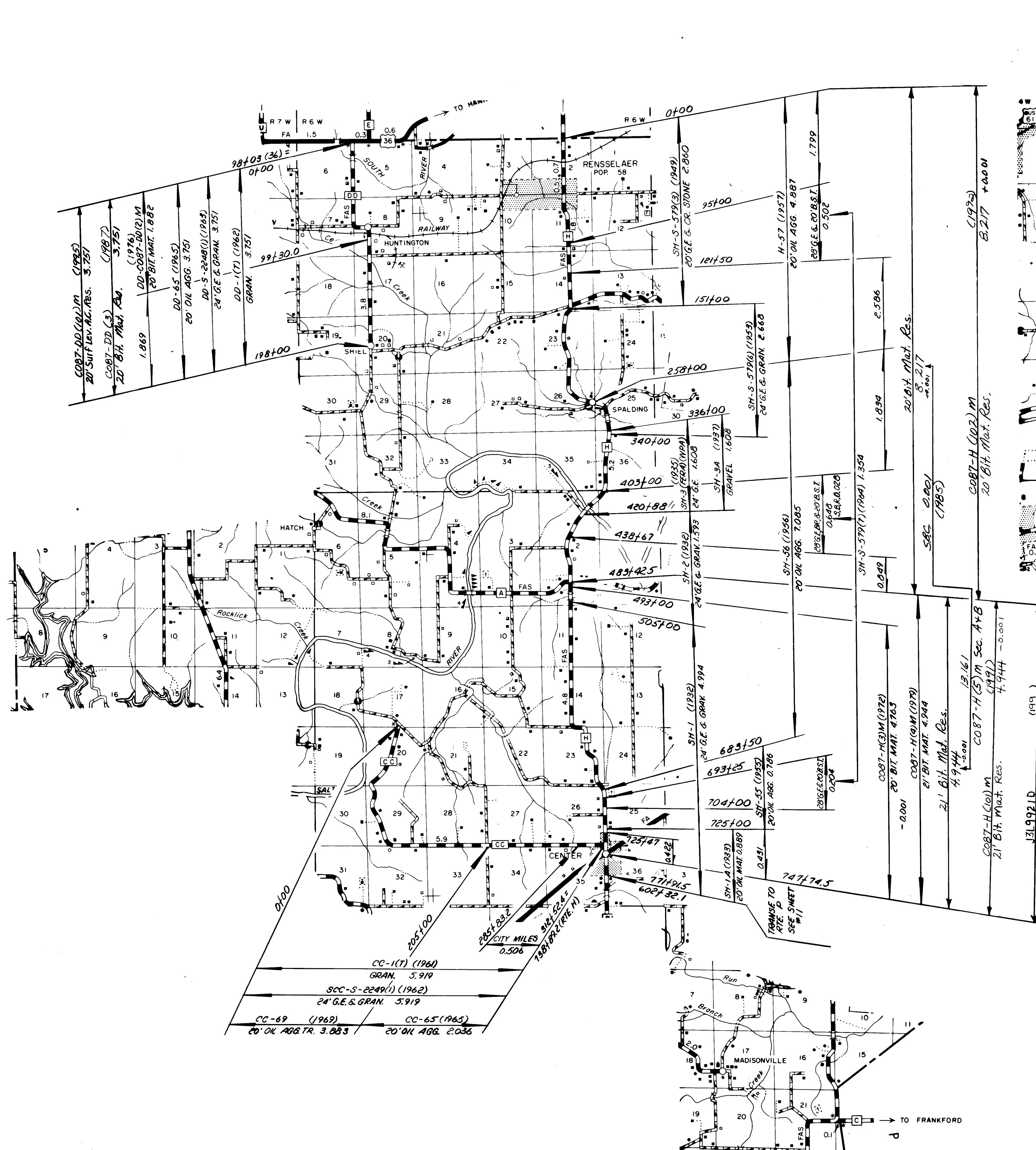


ROUTES 61Bus
C
Y

③

087
RALLS

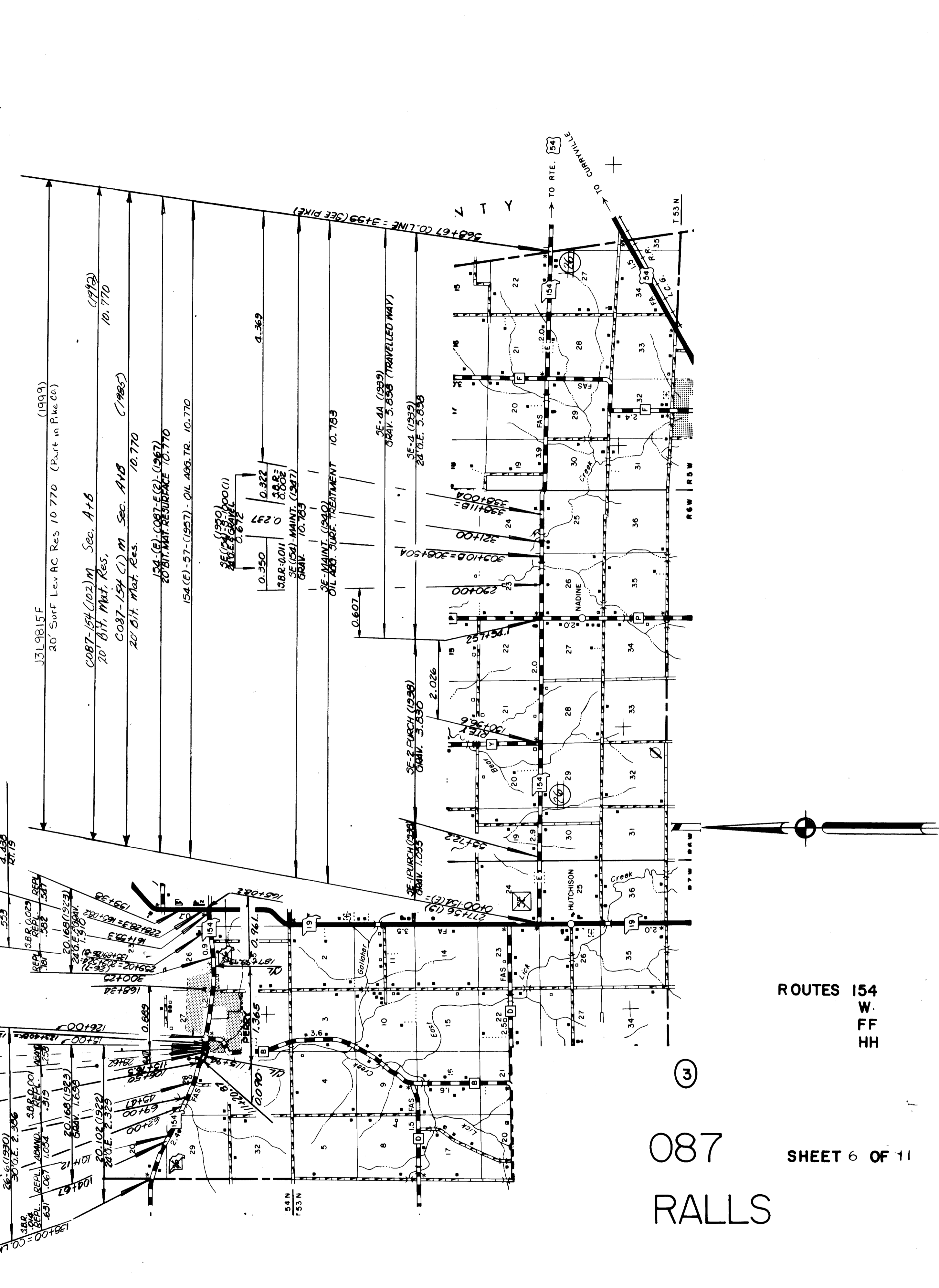
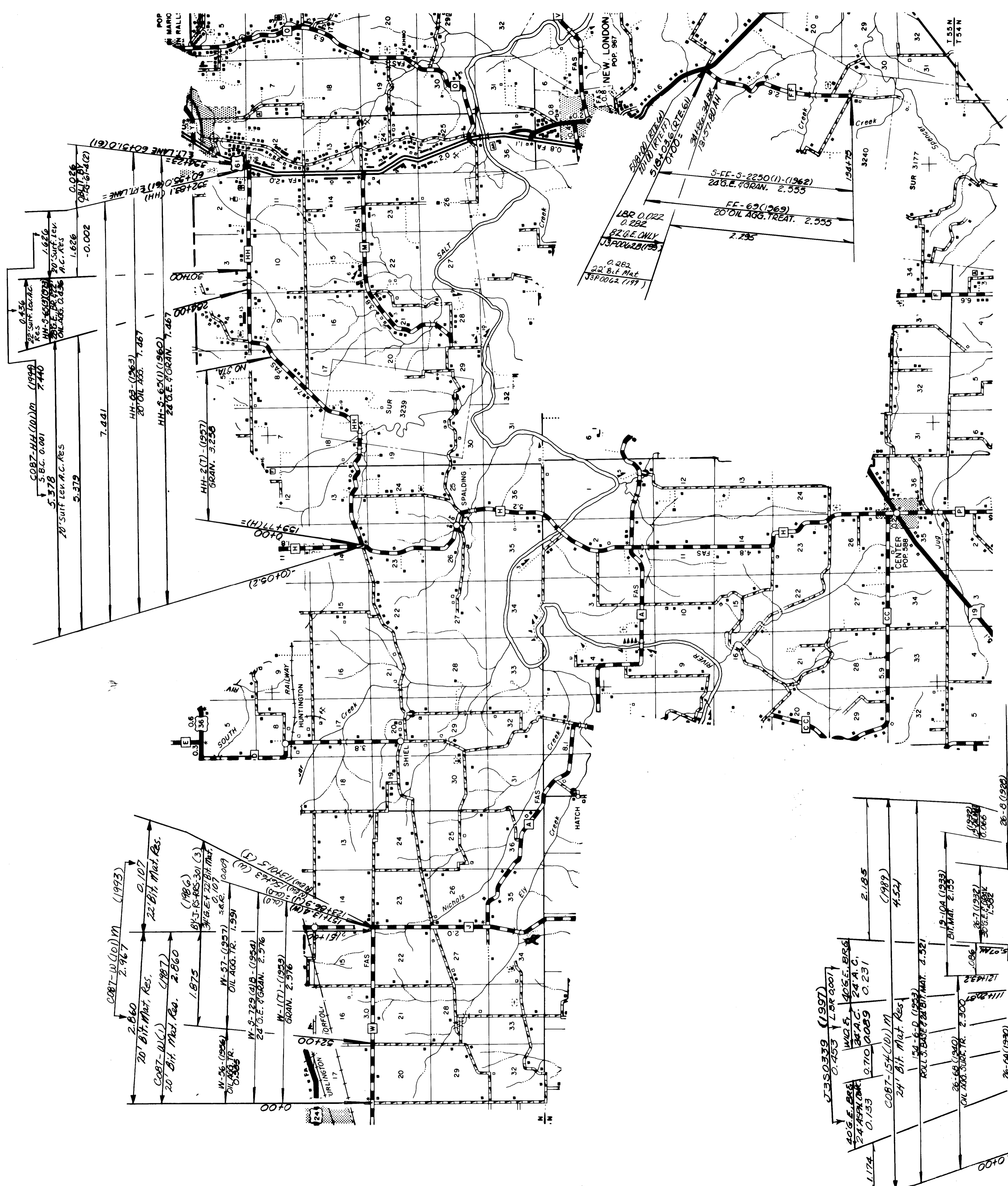
SHEET 4 OF 11



ROUTES 79
 H
 CC
 DD

③

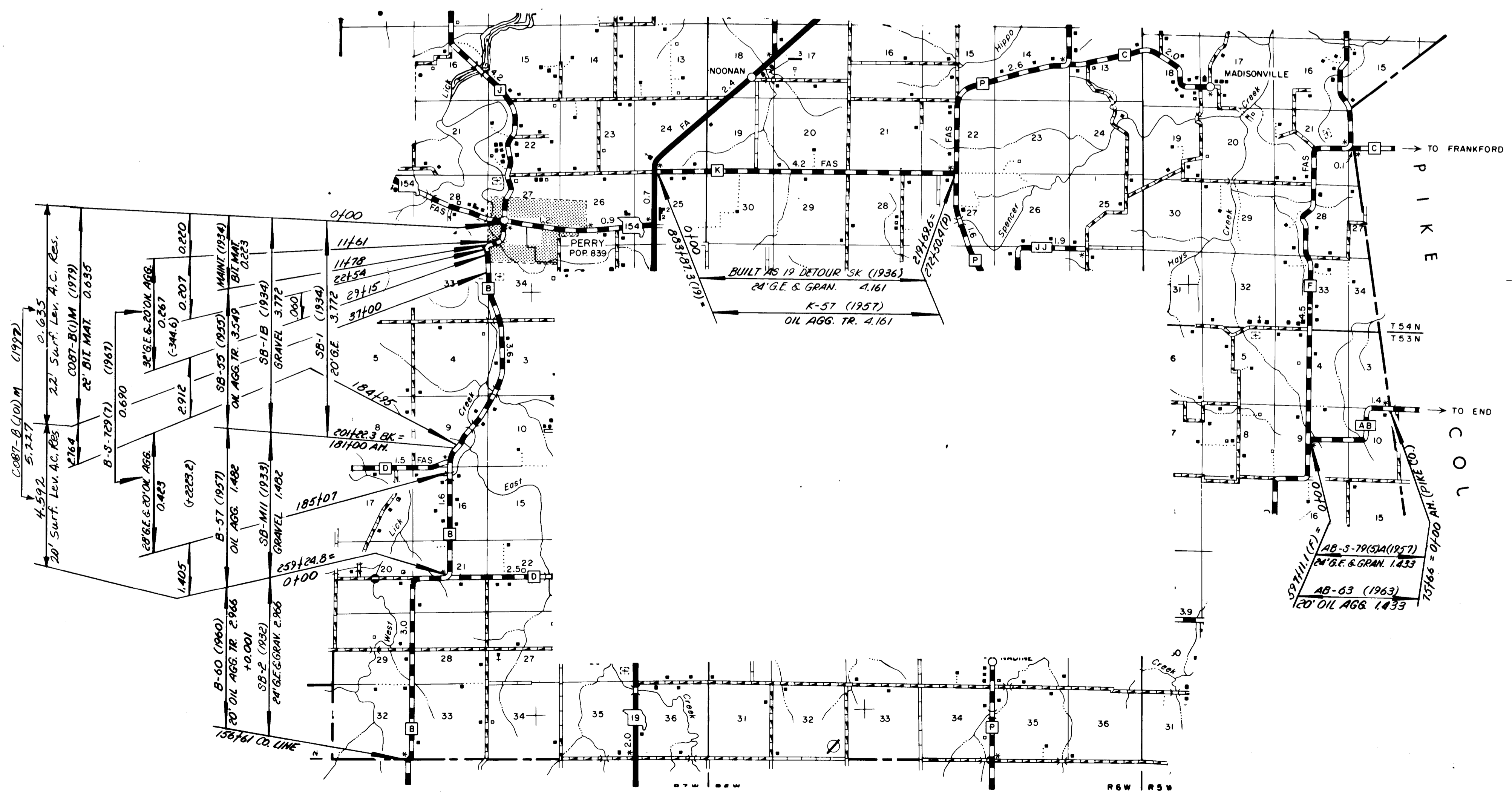
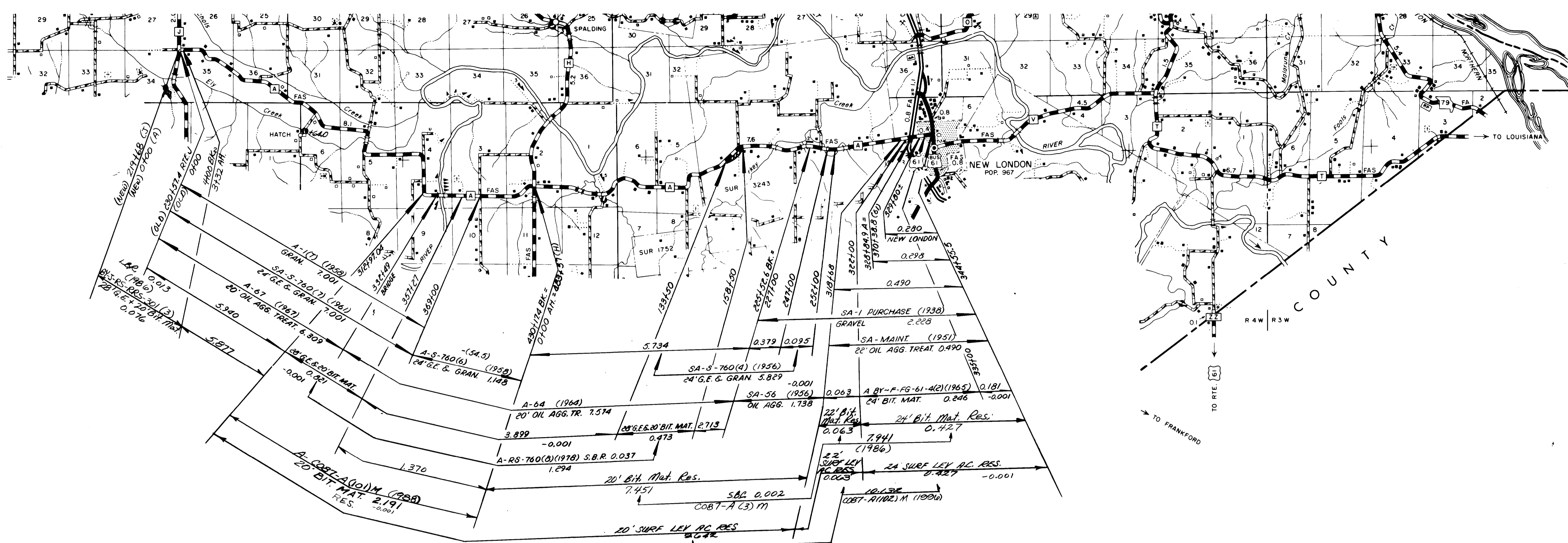
087 SHEET 5 OF 11
 RALLS



087
RALLS

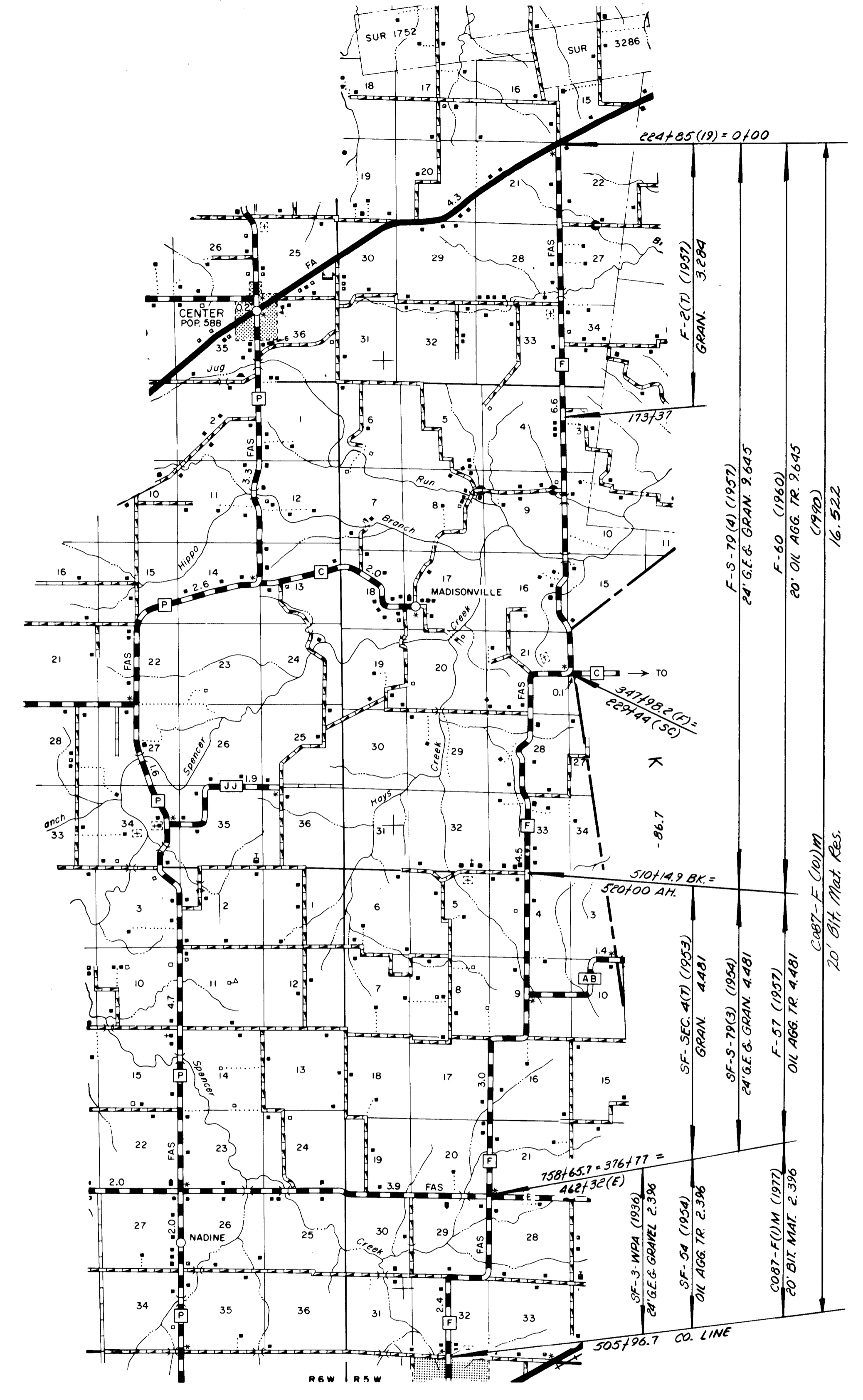
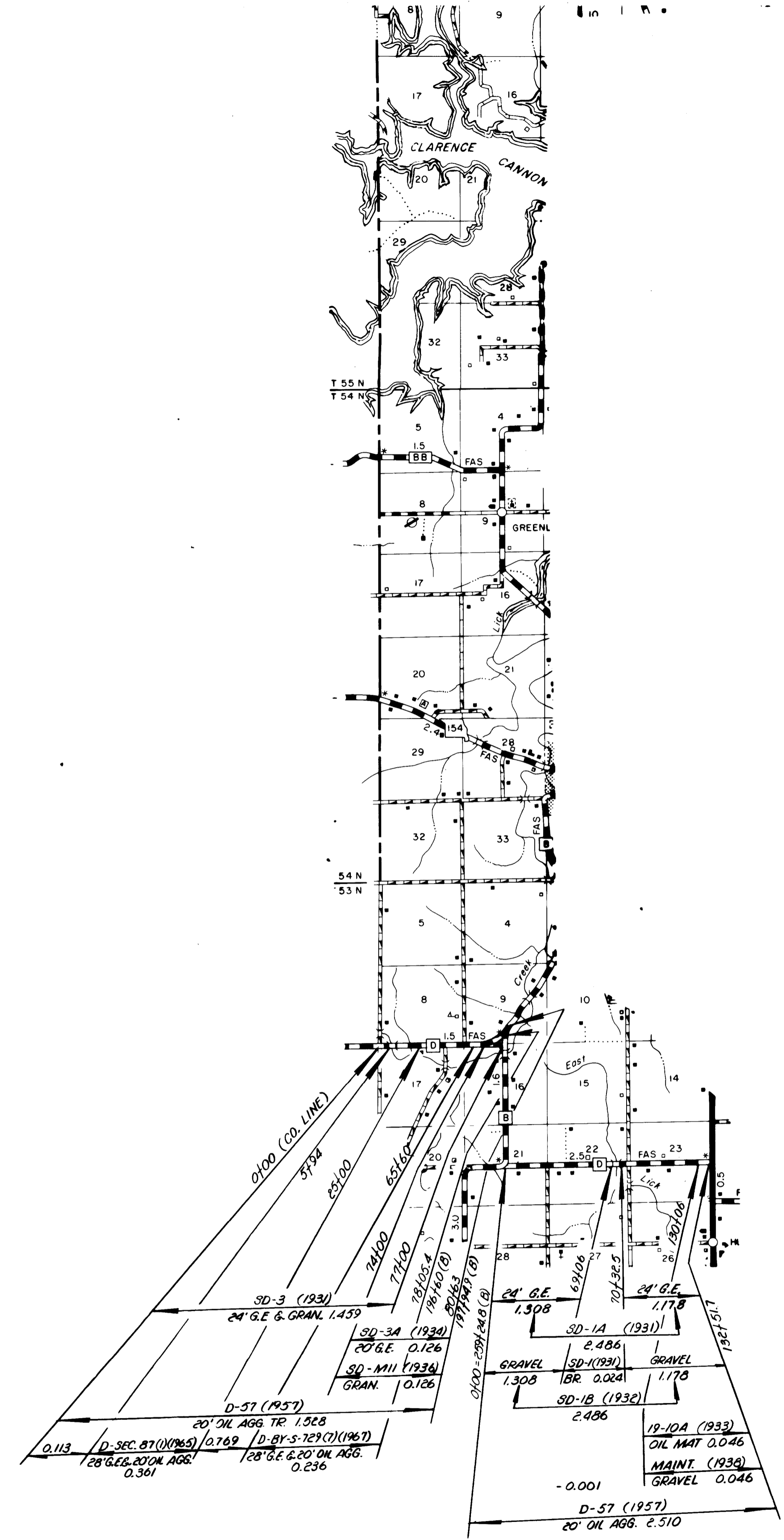
ROUTES 154
W.
FF
HH

SHEET 6 OF 11



ROUTES A
B
AB
K

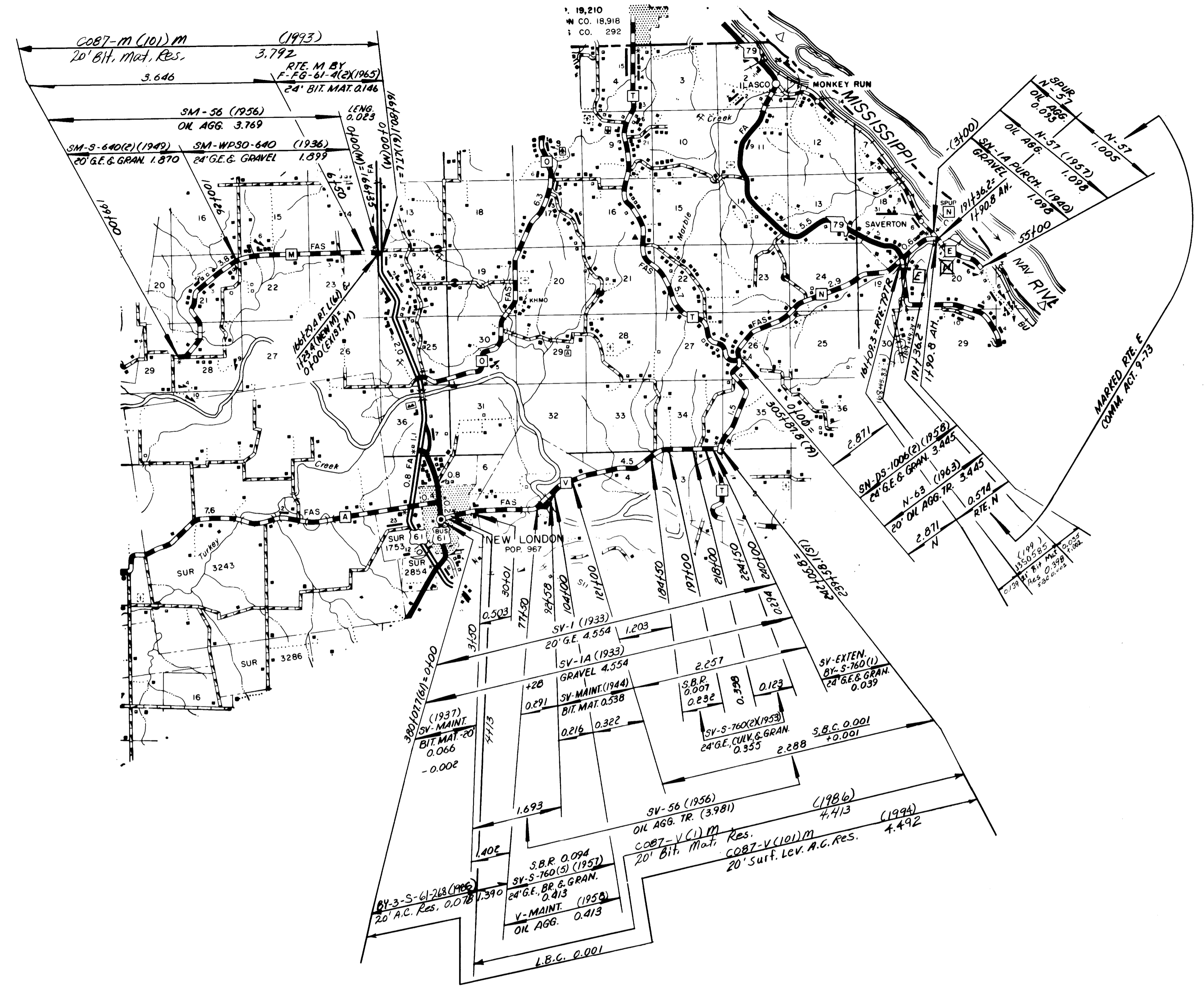
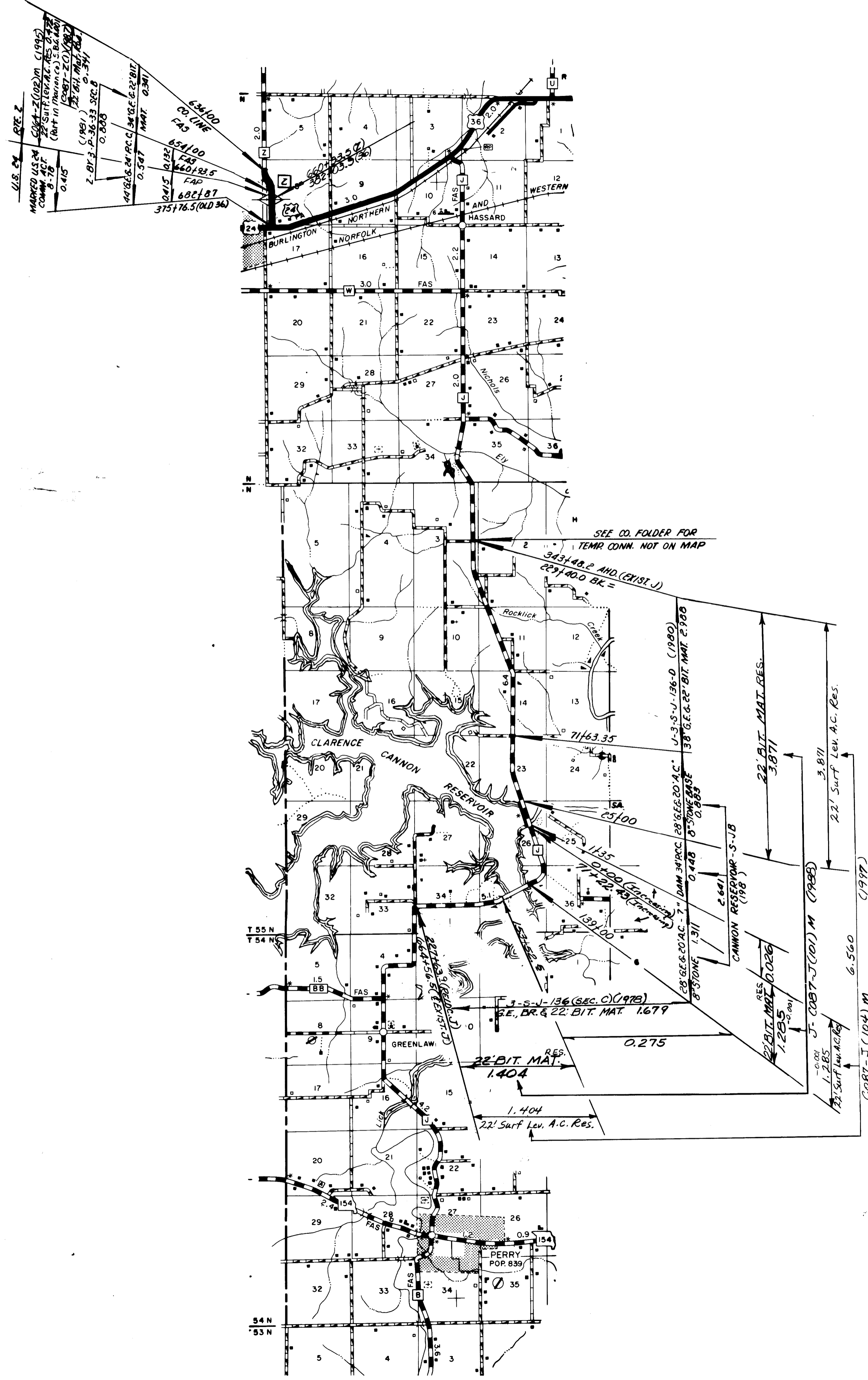
③
087 SHEET 7 OF 11
RALLS



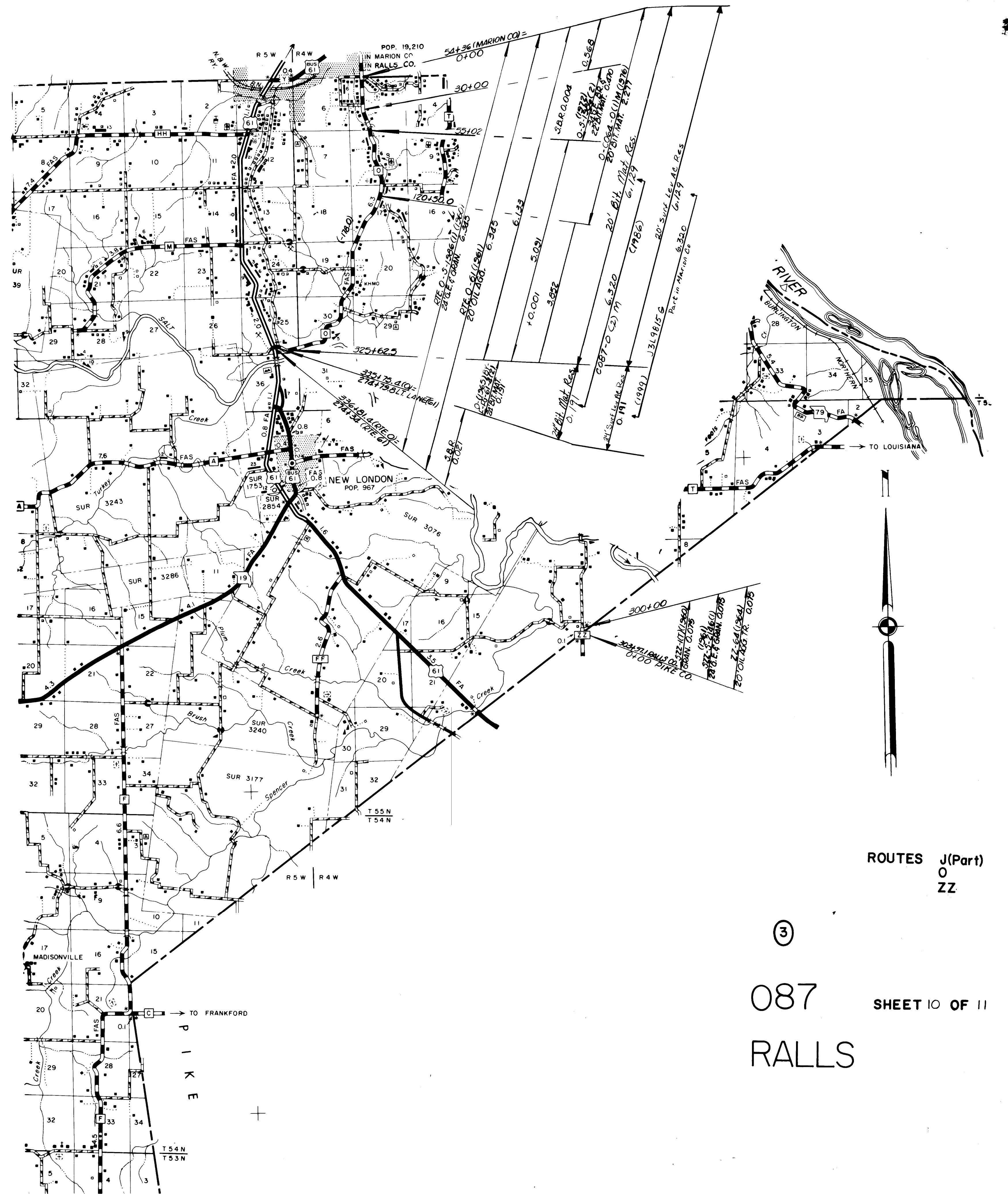
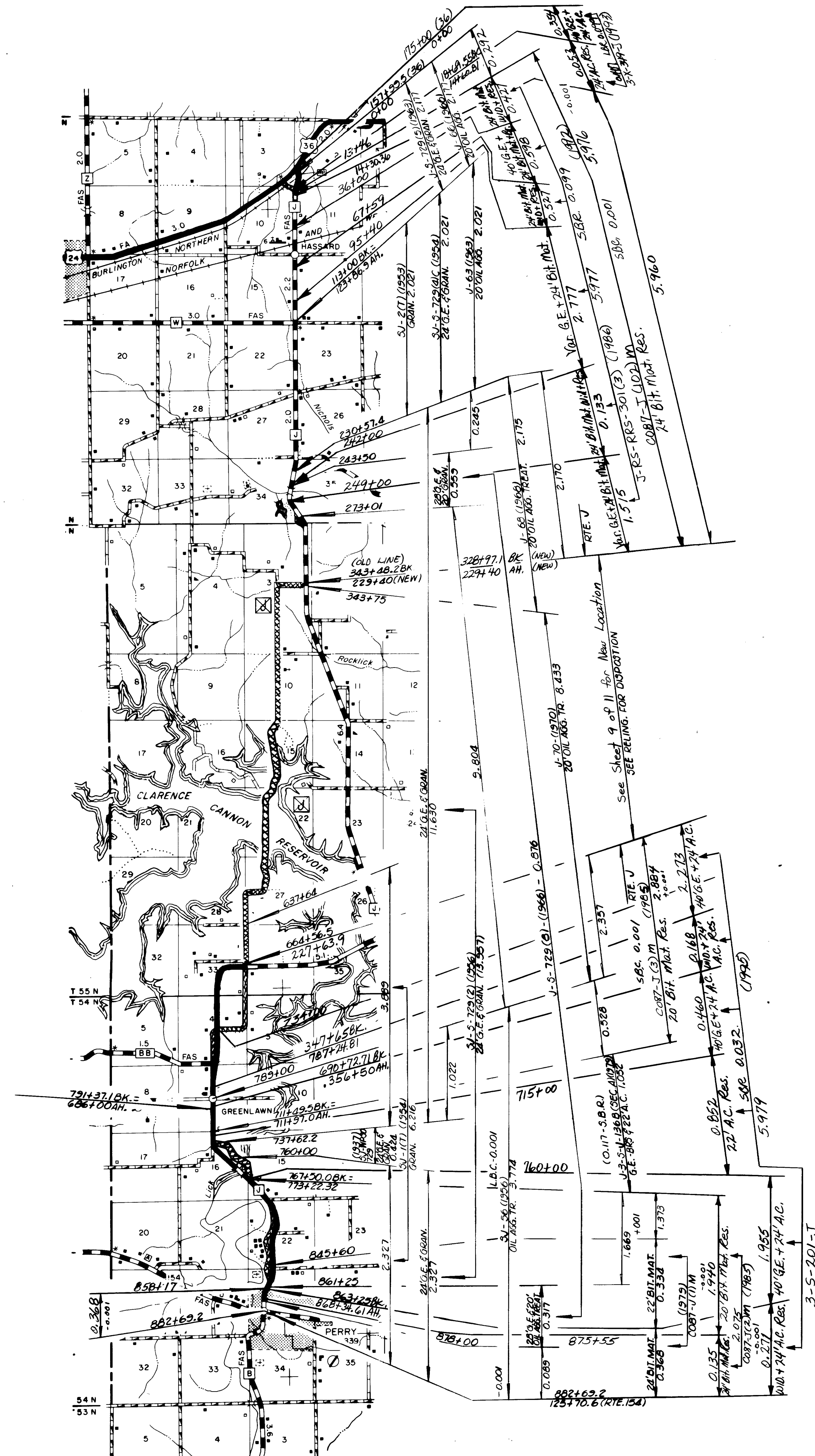
ROUTES D F



3



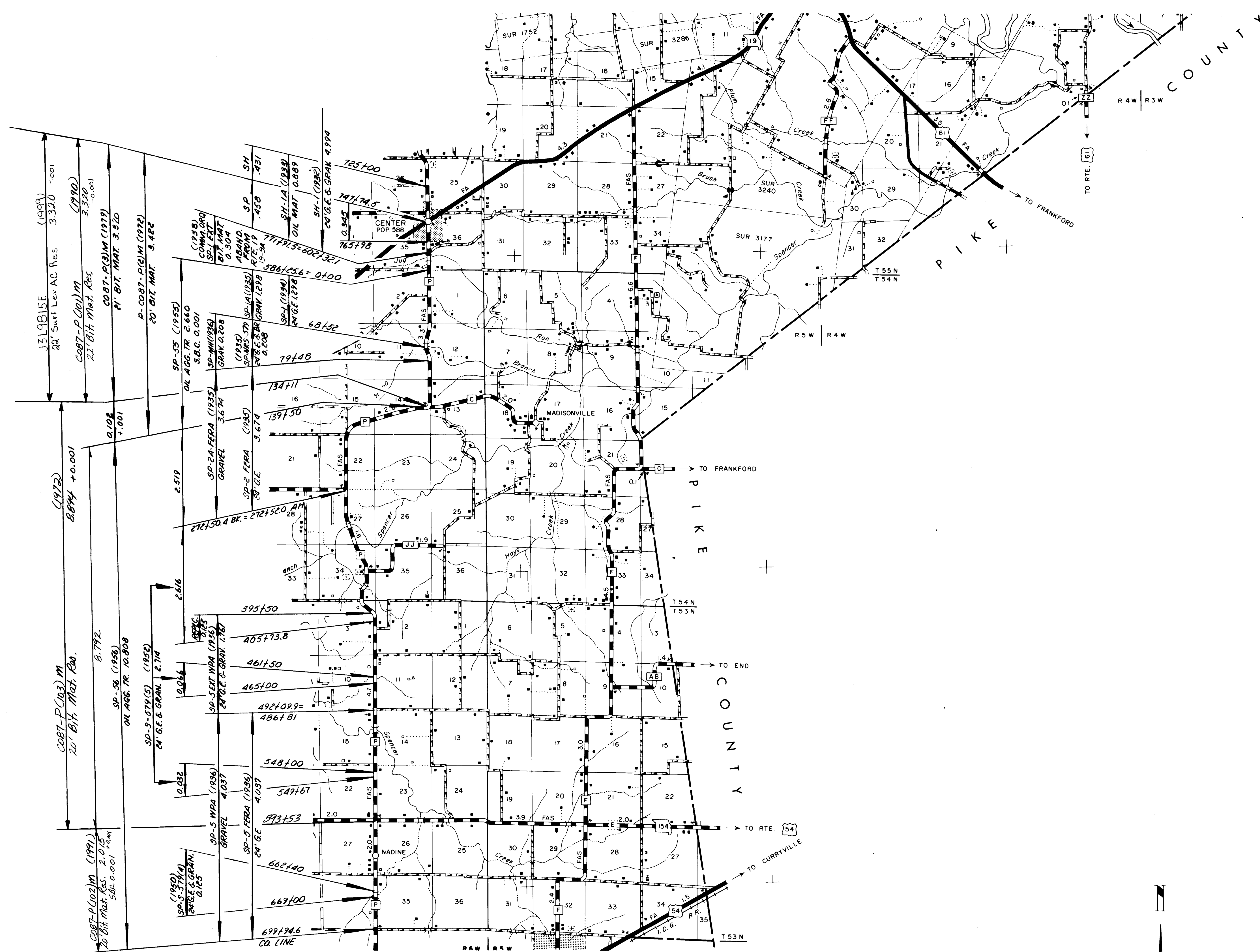
ROUTES J(PART)
 24(PART)
 V
 N
 E
 (SPUR)
 M
 Z(PART)
 087 SHEET 9 OF 11
 RALLS



ROUTES J(Part)
O
ZZ

③
087
RALLS

SHEET 10 OF 11



ROUTES P

③

087 SHEET 11 OF 11

RALLS