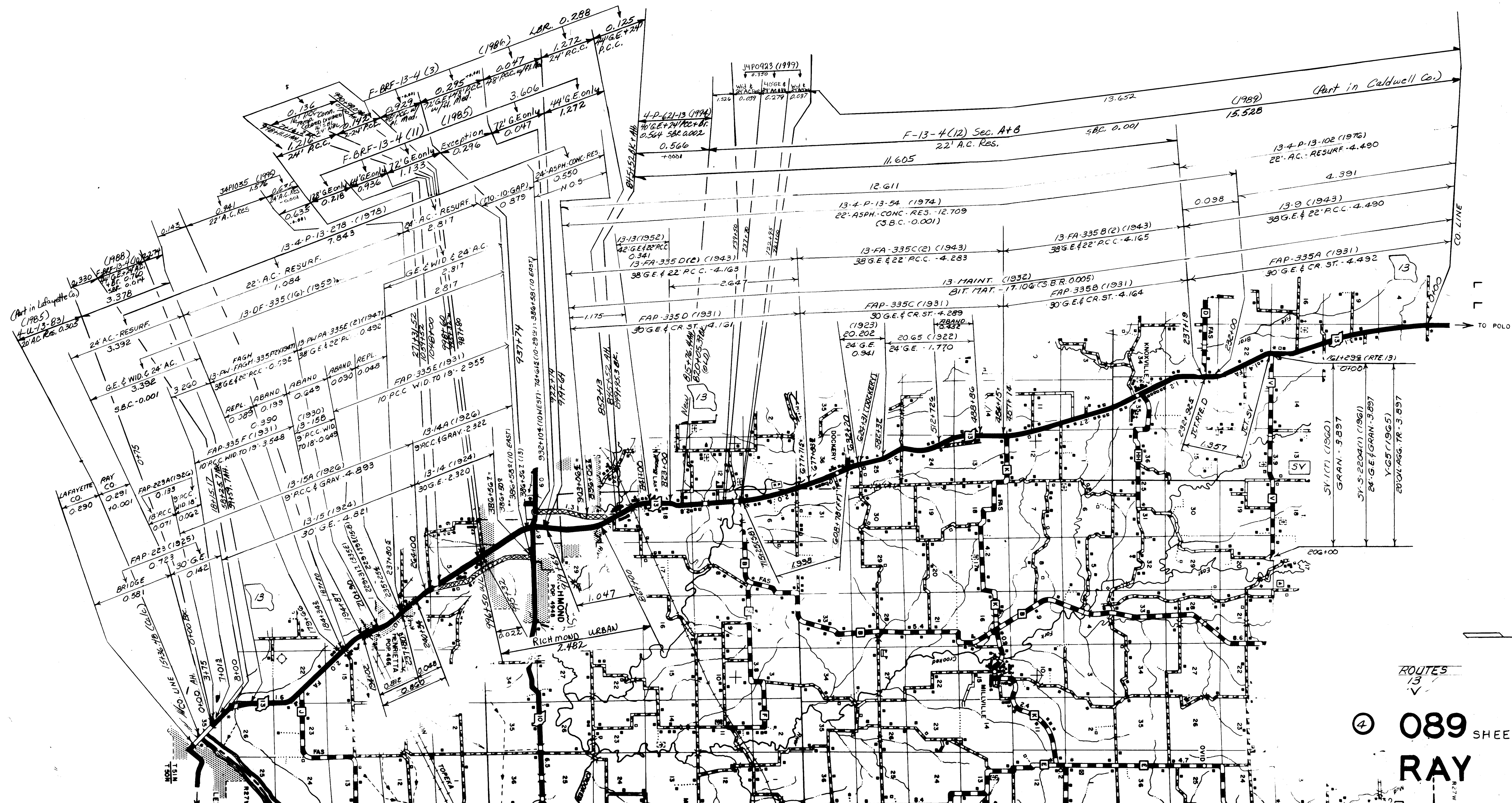
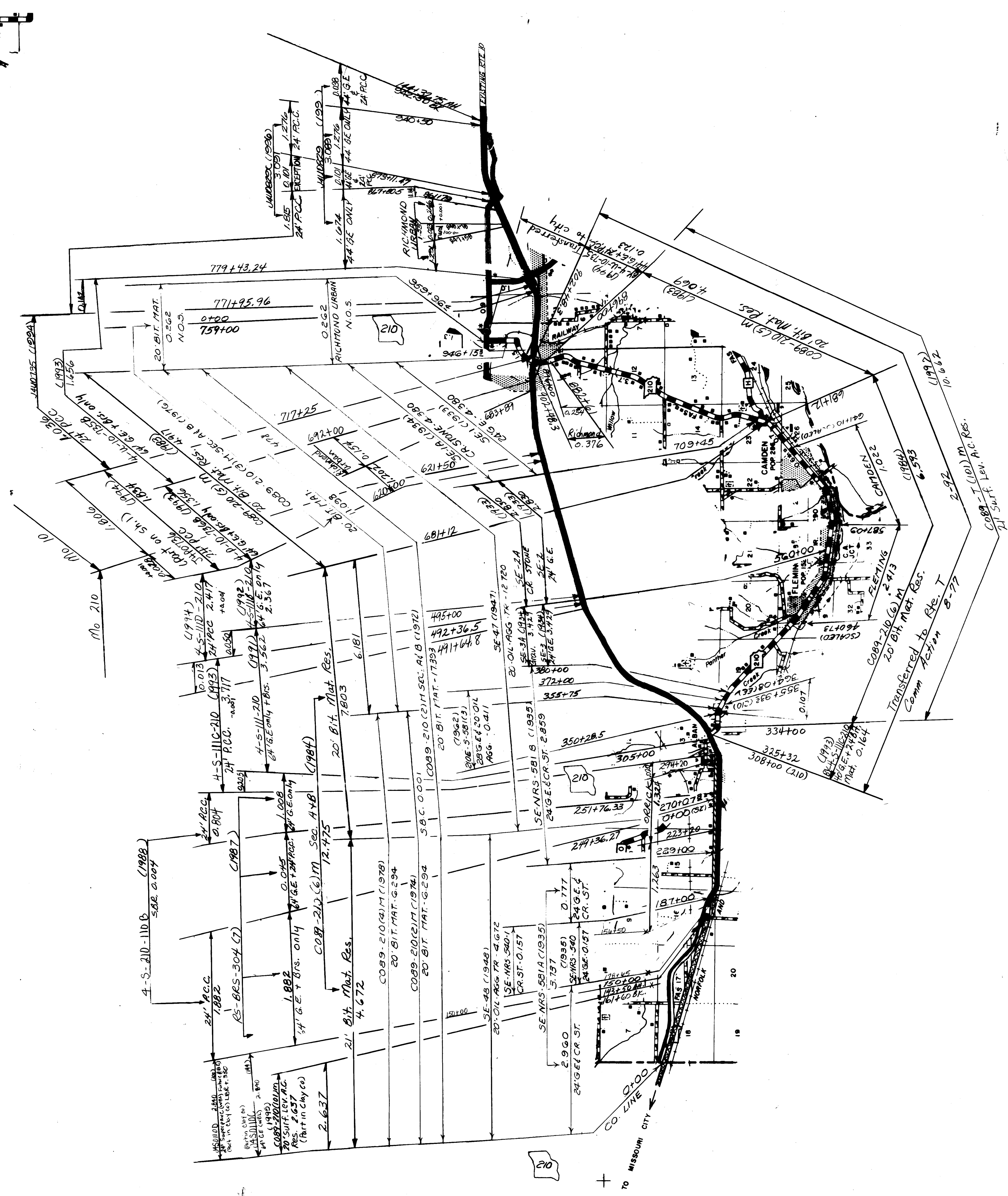
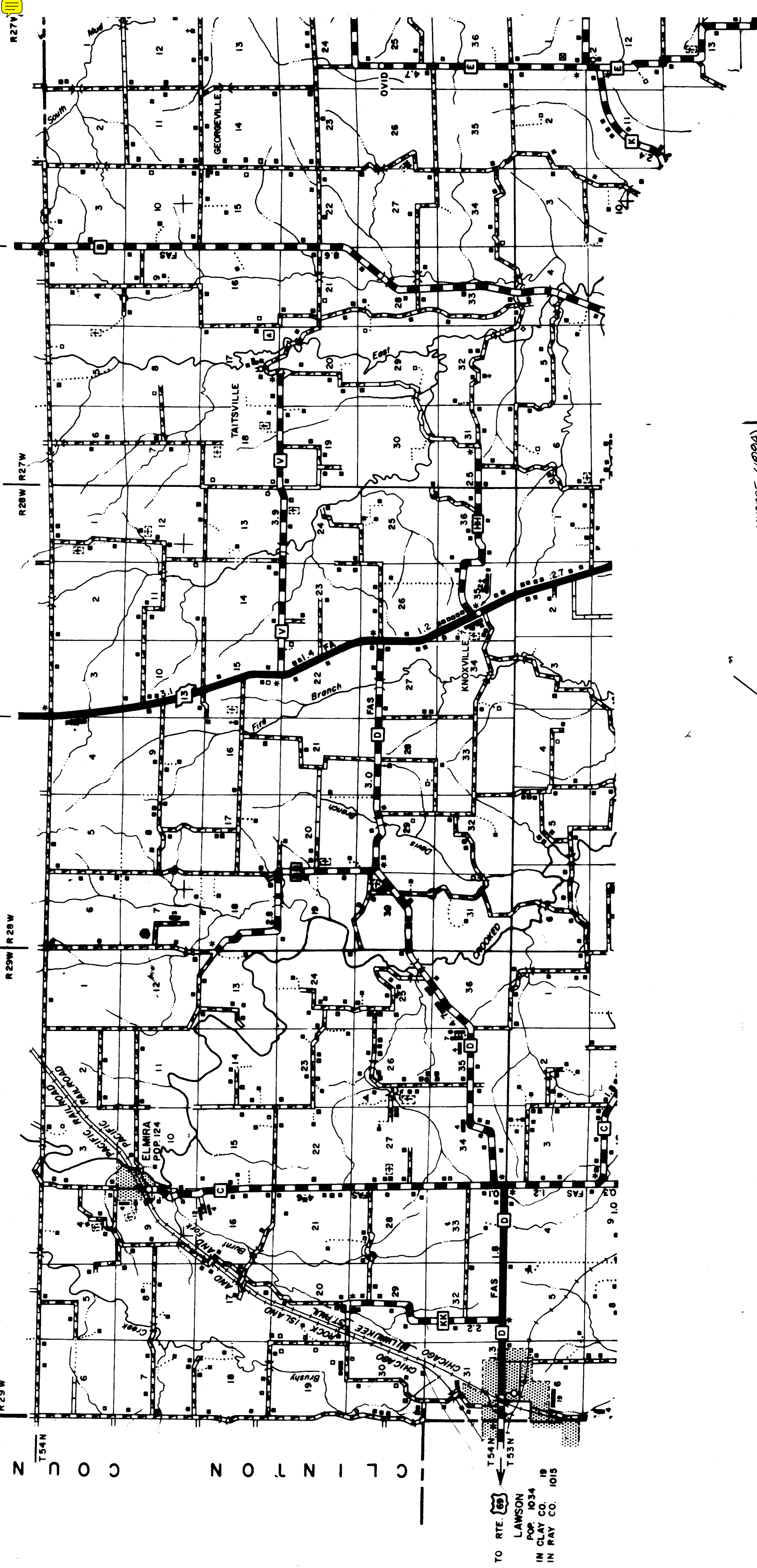


ROUTES
 10 Part
 CC
 Bus 10

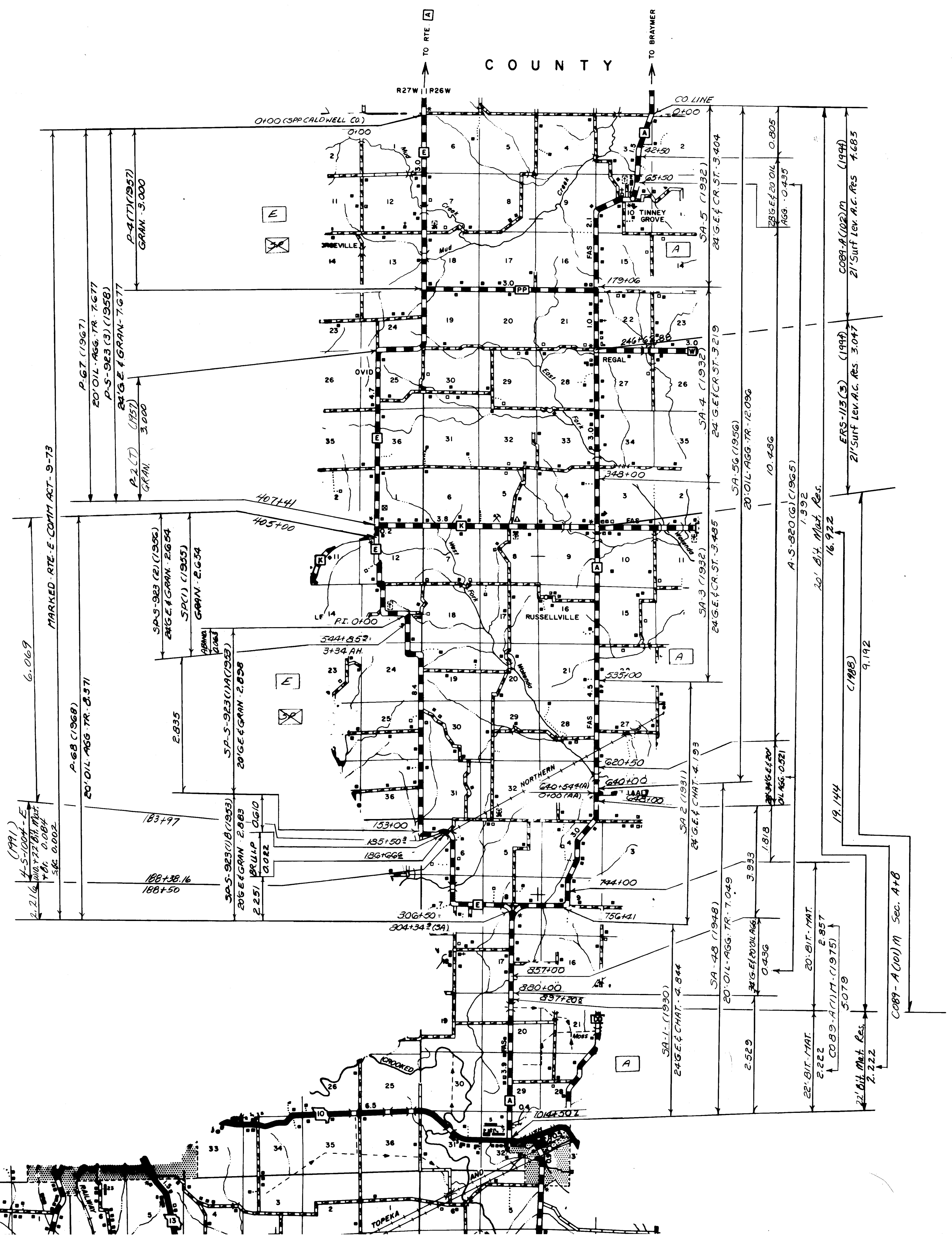
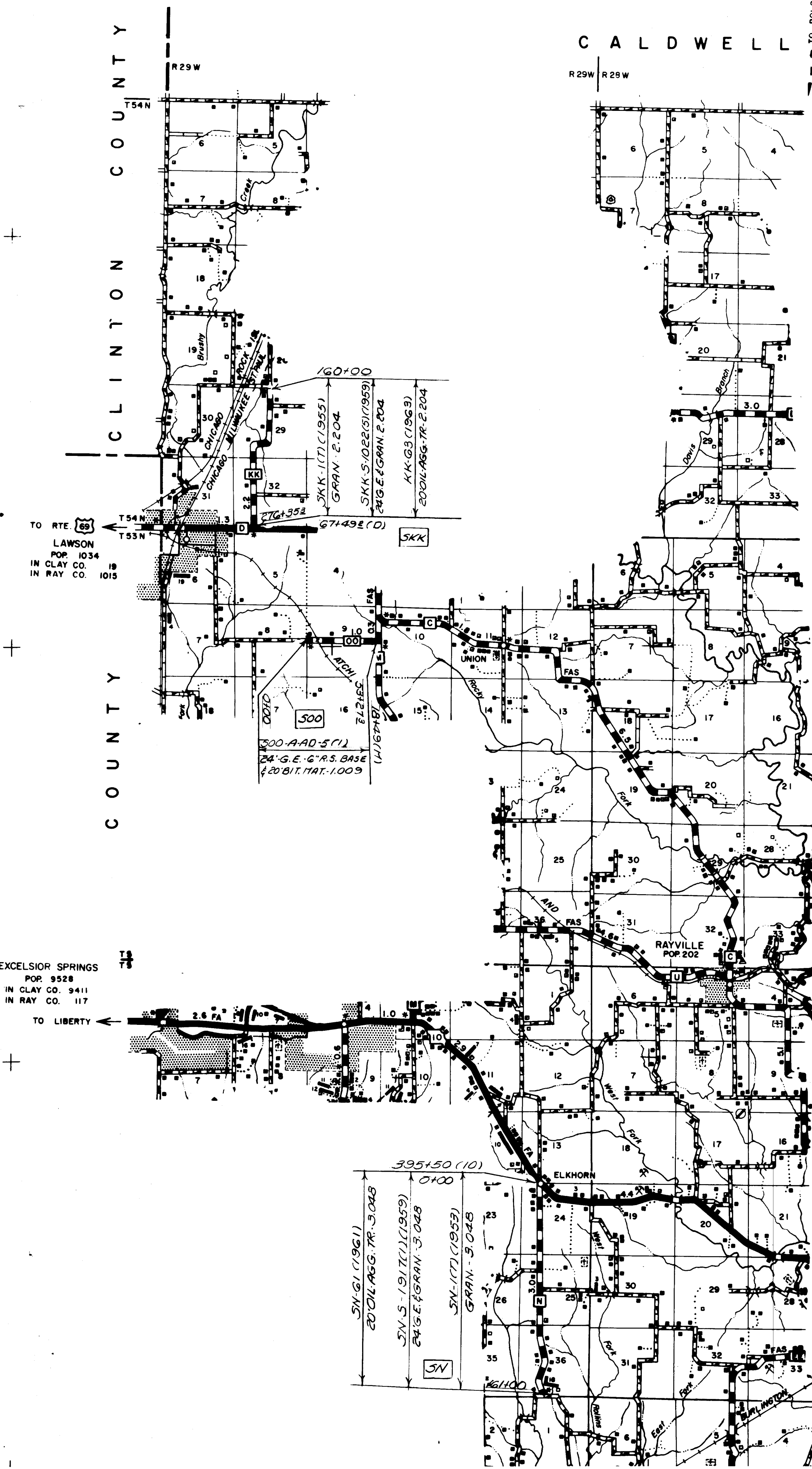


ROUTES
 13
 ④ 089 SHEET 2 OF 9
 RAY

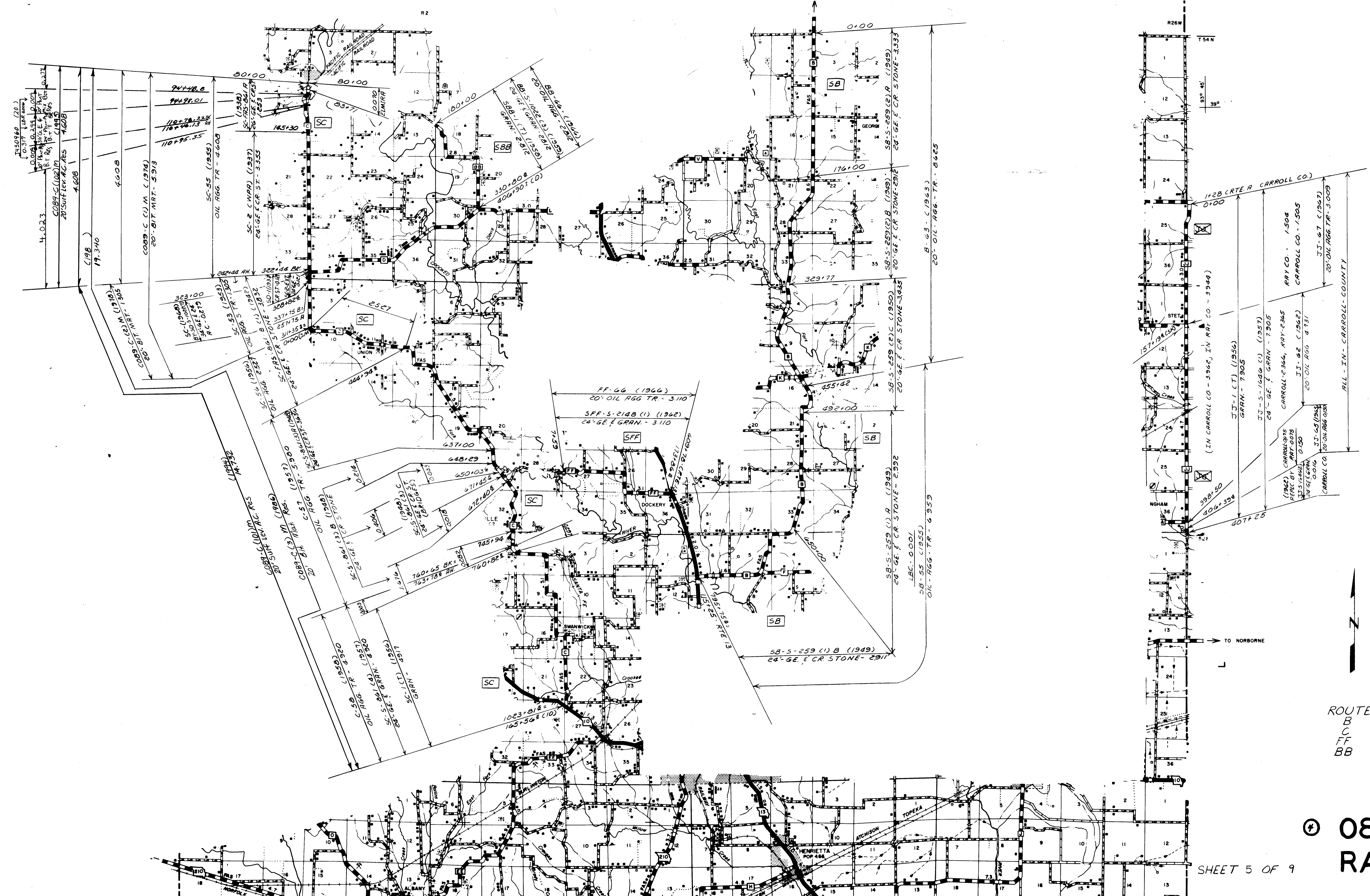


ROUTES
 210
 T
 10 Part

 ④ 089 SHEET 3 OF 9
 RAY

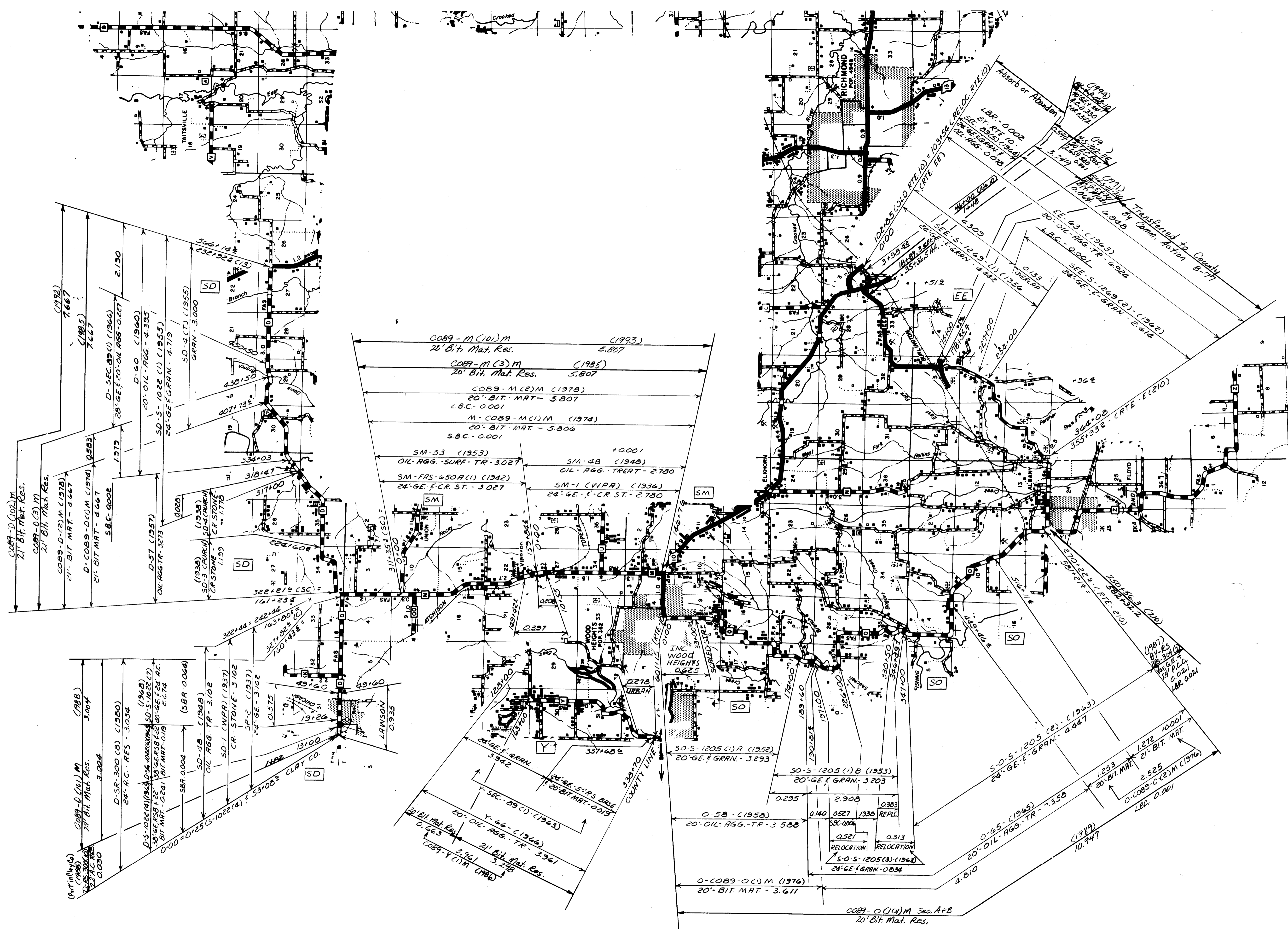


- ROUTES
 A
 N
 KK
 OO



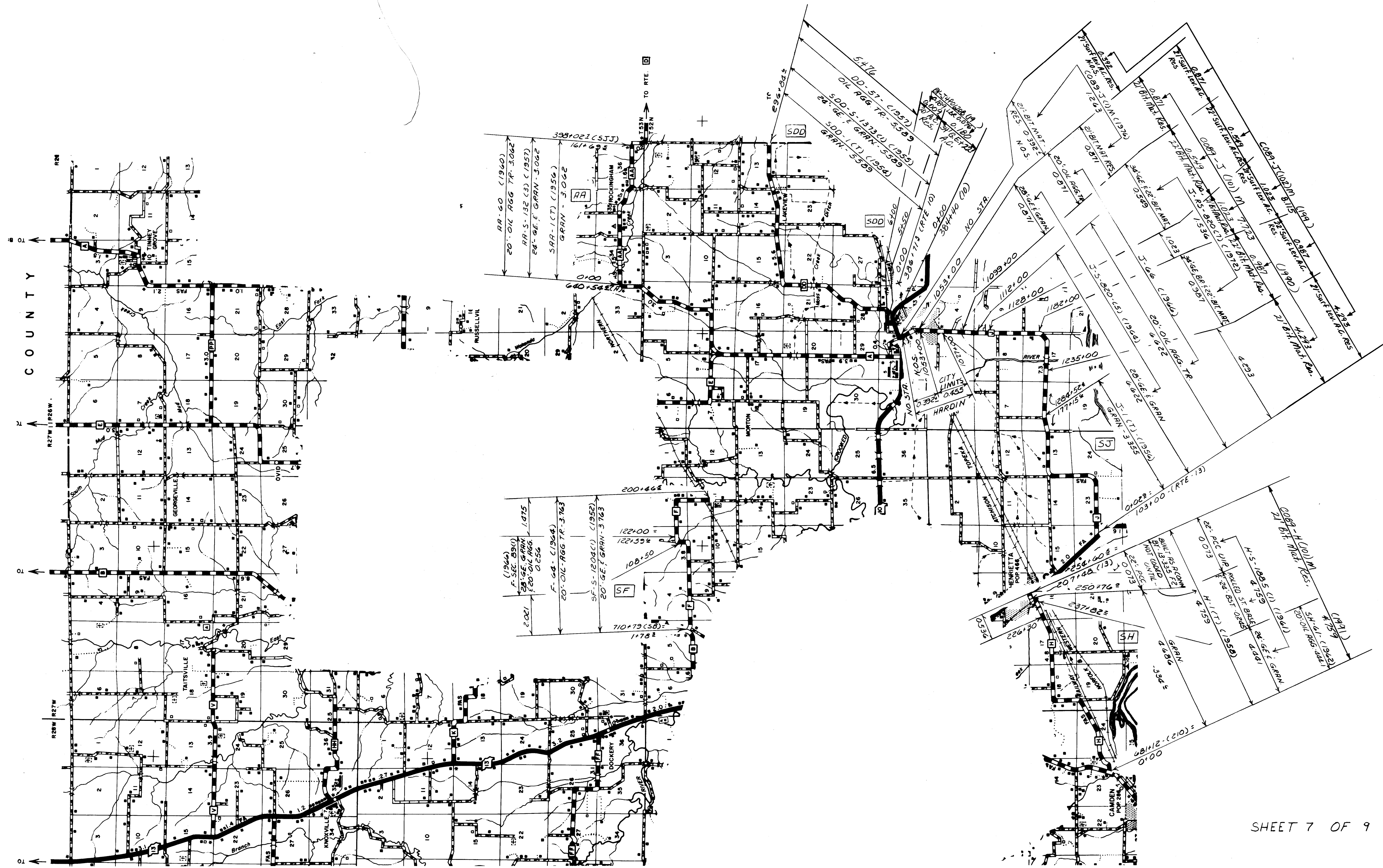
ROUTES
 B
 C
 FF
 BB

089
 RAY



ROUTES
D
M
O
Y
E

089
RAY

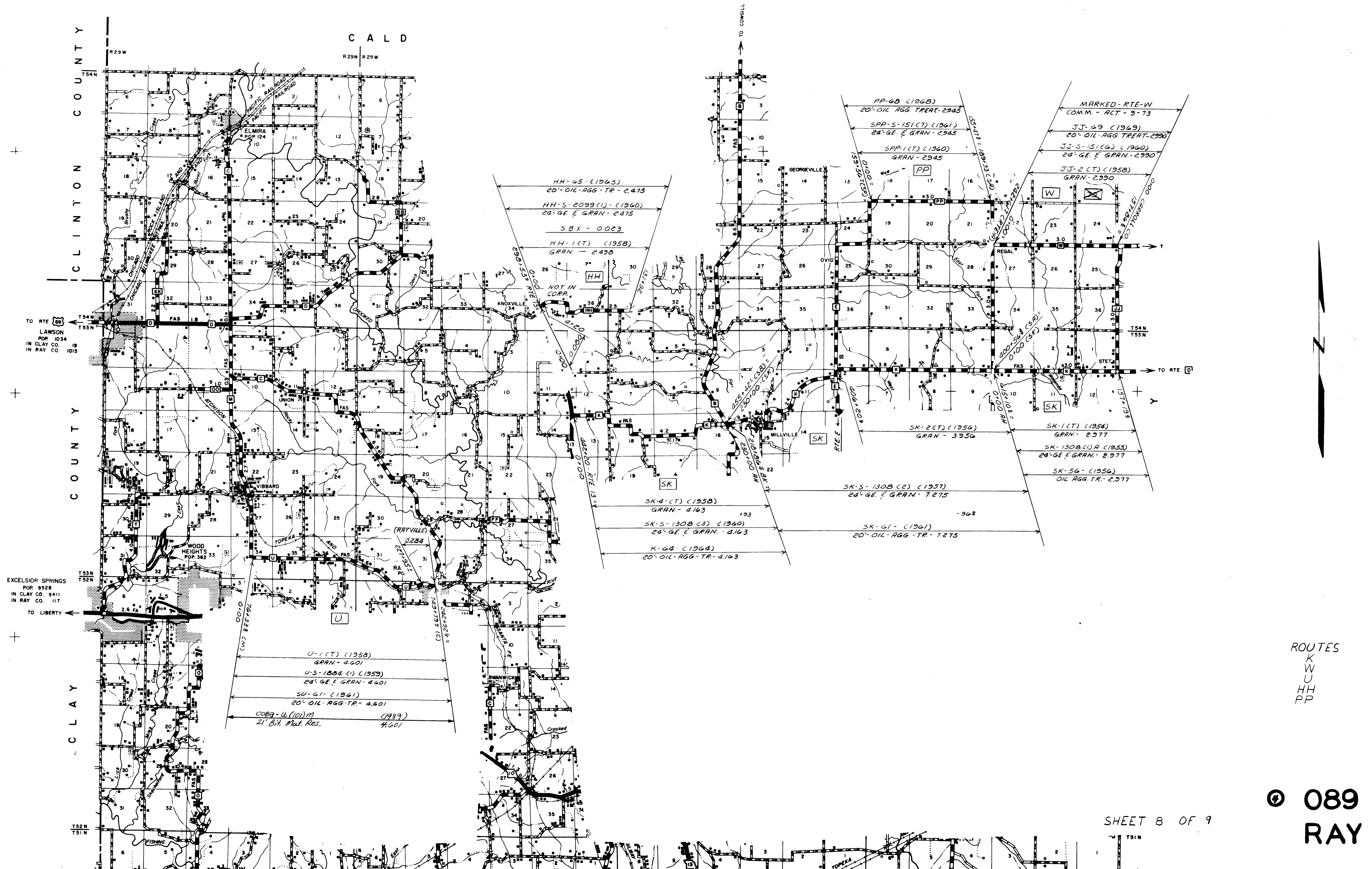


COUNTY



ROUTES
H
J
F
RR
DD

089
RAY



TO RTE. 69
LAWSON
POP. 1034
IN CLAY CO. 9411
IN RAY CO. 1015

EXCELSIOR SPRINGS
POP. 9528
IN CLAY CO. 9411
IN RAY CO. 117

U-1 (CT) (1958)
GRAN. - 4601
U-S-1004 (1) (1959)
24' GE. & GRAN. - 4601
SU-61 (1961)
20' OIL AGG. TR. - 4601
COEG-U (1011) (1989)
21' B.H. Mat. Res. 4601

HH-65 (1965)
20' OIL AGG. TR. - 2475
HH-S-2099 (1) (1960)
24' GE. & GRAN. - 2475
SBX-0023
HH-1 (CT) (1958)
GRAN. - 2490

NOT IN CORR.
HH
HH

SK-4 (CT) (1958)
GRAN. - 4163
SK-S-130B (3) (1960)
24' GE. & GRAN. - 4163
K-64 (1964)
20' OIL AGG. TR. - 4163

SK-2 (CT) (1954)
GRAN. - 3956
SK-S-130B (2) (1957)
24' GE. & GRAN. - 7275
SK-61 (1961)
20' OIL AGG. TR. - 7275

SK-1 (CT) (1954)
GRAN. - 2977
SK-130B (1) A (1955)
24' GE. & GRAN. - 2977
SK-56 (1956)
OIL AGG. TR. - 2977

PP-68 (1968)
20' OIL AGG. TREAT. - 2945
SPP-S-151 (7) (1961)
24' GE. & GRAN. - 2945
SPP-1 (CT) (1960)
GRAN. - 2945

MARKED - RTE-W
COMM. - ACT - 9-73
JJ-69 (1969)
20' OIL AGG. TREAT. - 2990
JJ-S-151 (6) (1960)
24' GE. & GRAN. - 2990
JJ-2 (CT) (1958)
GRAN. - 2990

ROUTES
K
HH
CW
PP

TO RTE 65
LAWSON
POP. 1638
IN CLAY CO. 72
IN RAY CO. 1646

COUNTY

HOMESTEAD VILLAGE
POP. 138

EXCELSIOR SPRINGS
POP. 10,424
IN CLAY CO. 10,268
IN RAY CO. 156

CLAY

TO MISSOURI CITY

JACKSON

COUNTY

ROUTES
13 Bus.
Z

④ 089 SHEET 9 OF 9
RAY

