

JUNTY

COUNTY

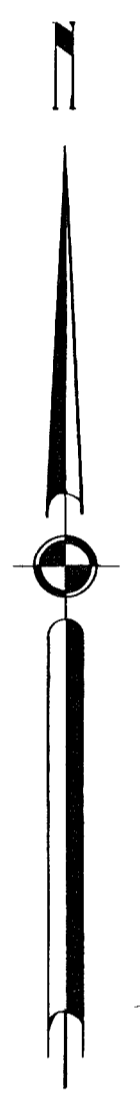
CLARK

ROUTES 15  
Y - History  
RA

3

099 SHEET 1 OF 7

SCOTLAND



40° 35'  
91° 55'

T 67 N  
T 66 N

T 66 N  
T 65 N

T 65 N  
T 64 N

T 67 N  
T 66 N

R 13 W  
R 12 W  
R 11 W

R 12 W  
R 11 W

R 11 W  
R 10 W

R 10 W

0+00 Co. Line

595+43.1 Co. Line

0+00

59+45 - (RTE. RA)

51+30 - (RTE. W) = 0+00 - (RTE. RA)

125+01.3 = 12+33.5 (RTE. A)

144+00

156+58.5 = 666+58.5 (RTE. A)

127+27

127+27

127+27

127+27

127+27

127+27

127+27

127+27

127+27

127+27

127+27

127+27

127+27

127+27

127+27

127+27

127+27

127+27

127+27

127+27

127+27

127+27

127+27

127+27

127+27

127+27

127+27

127+27

127+27

127+27

127+27

127+27

127+27

127+27

127+27

127+27

127+27

127+27

127+27

127+27

127+27

127+27

127+27

127+27

127+27

127+27

127+27

127+27

127+27

127+27

127+27

127+27

127+27

127+27

127+27

127+27

127+27

127+27

127+27

127+27

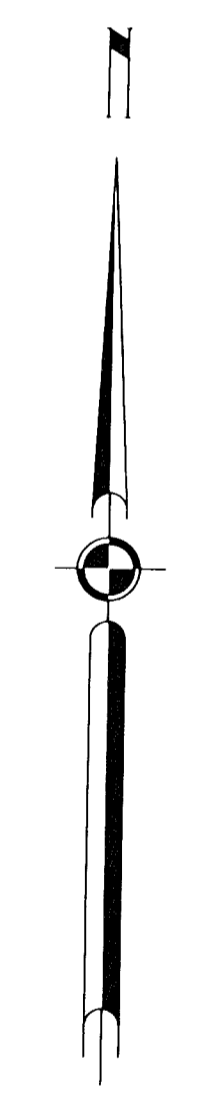
127+27

127+27

127+27

127+27

127+27

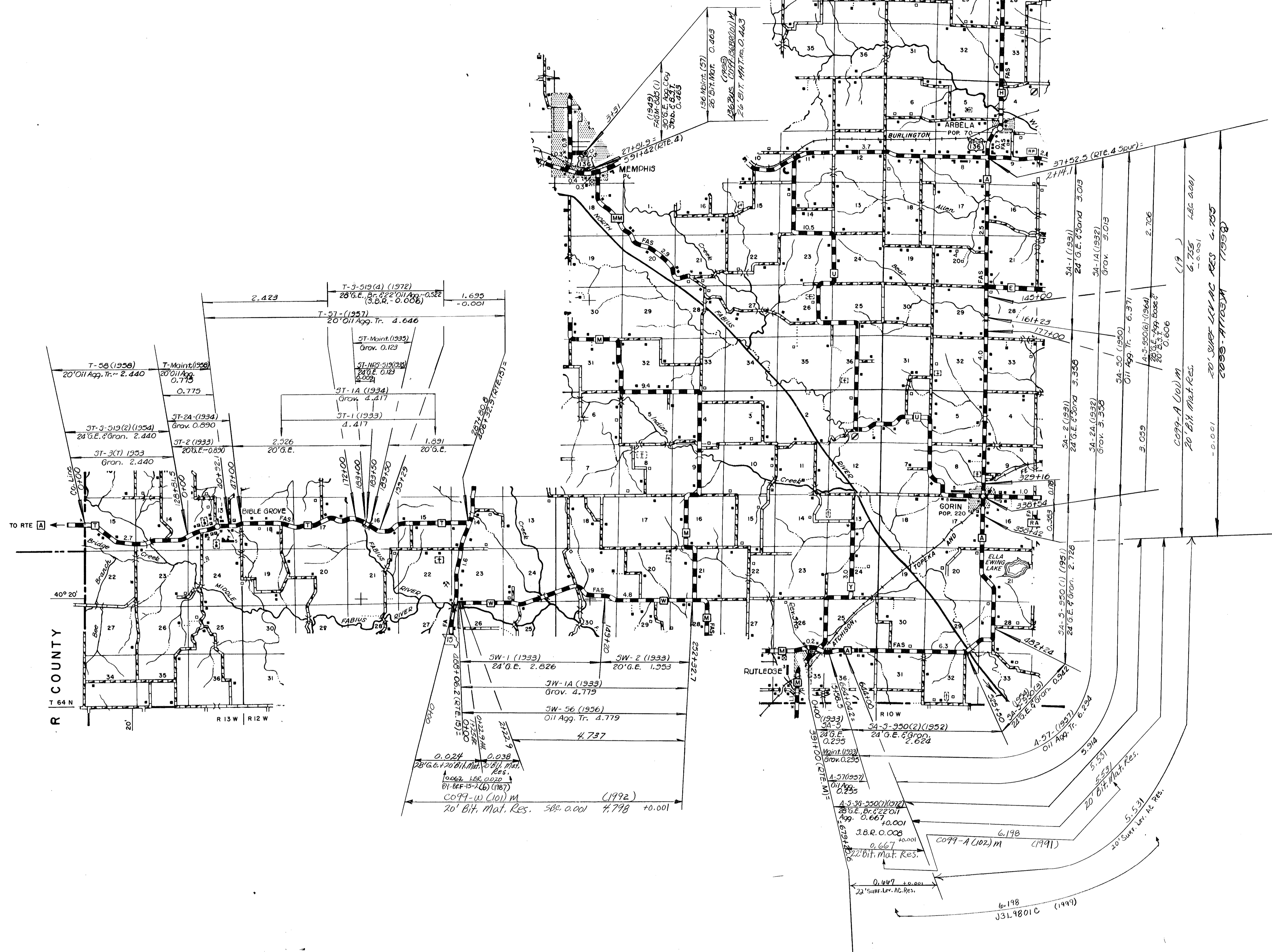


ROUTES 136  
136 SPUR  
F  
EE

③

099 SHEET 2 OF 7  
SCOTLAND

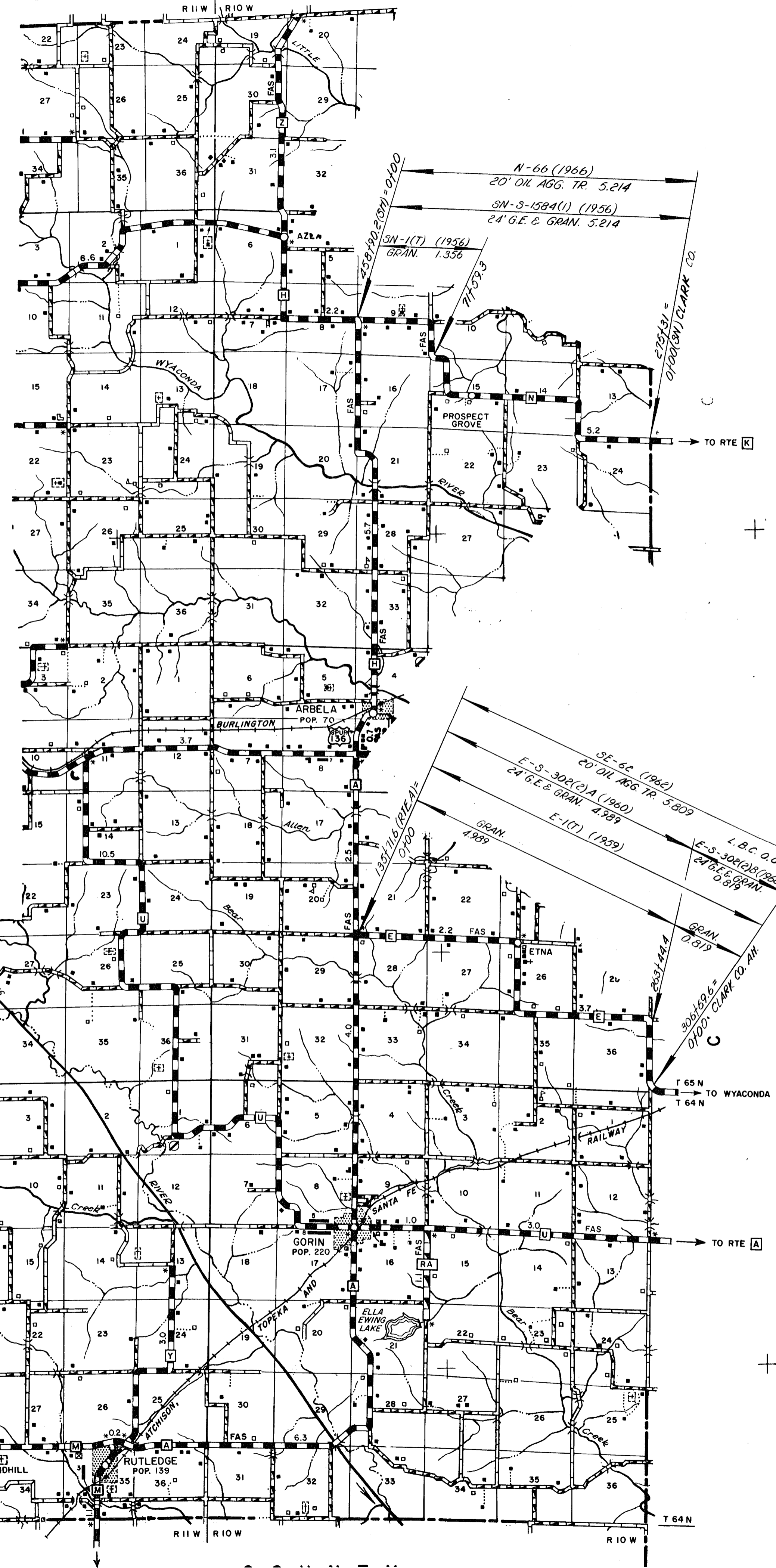
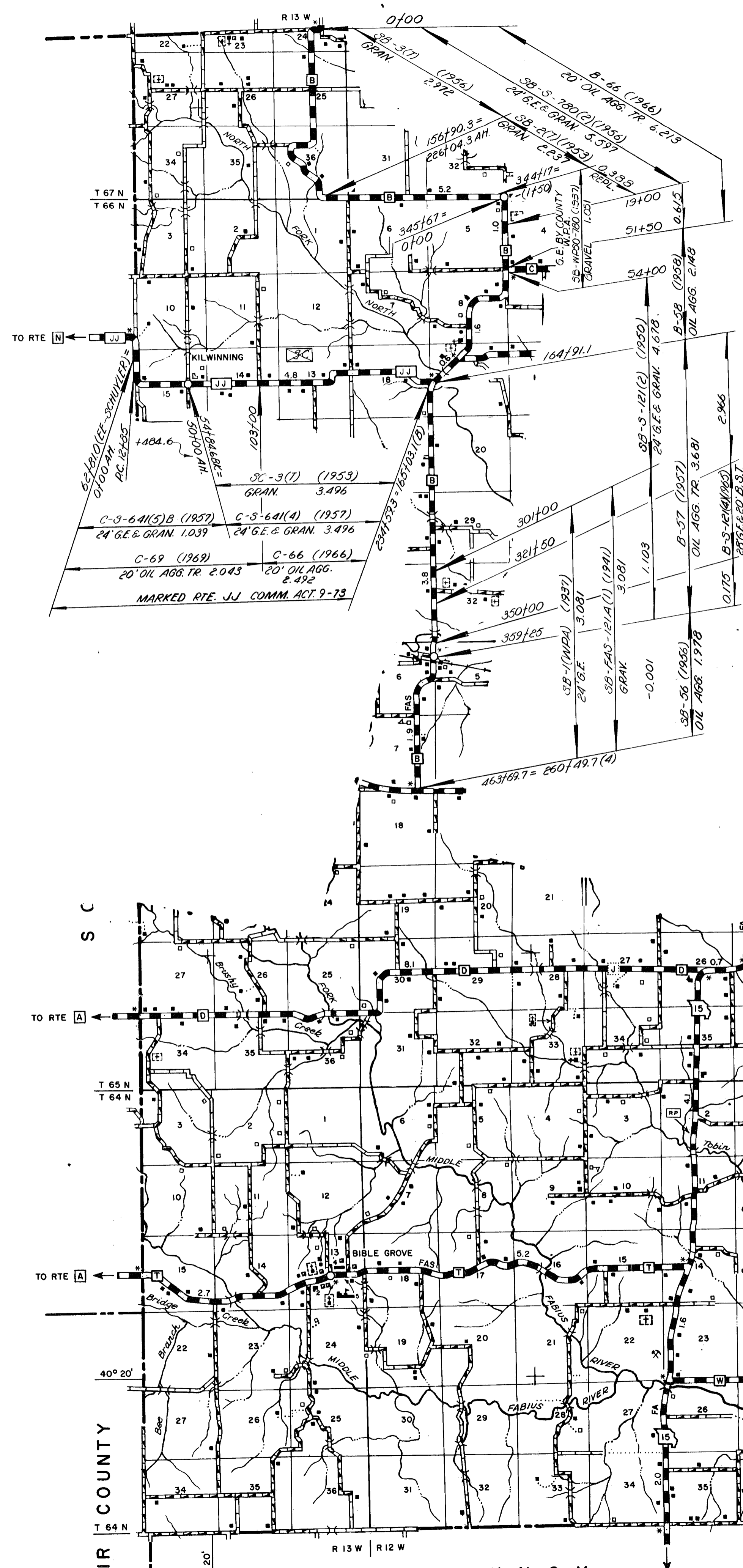
(Part in Clark Co.)



ROUTES 136 BUS  
A  
T  
W

3

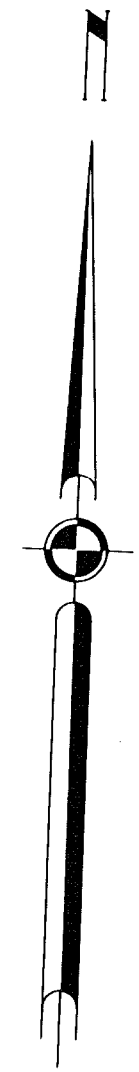
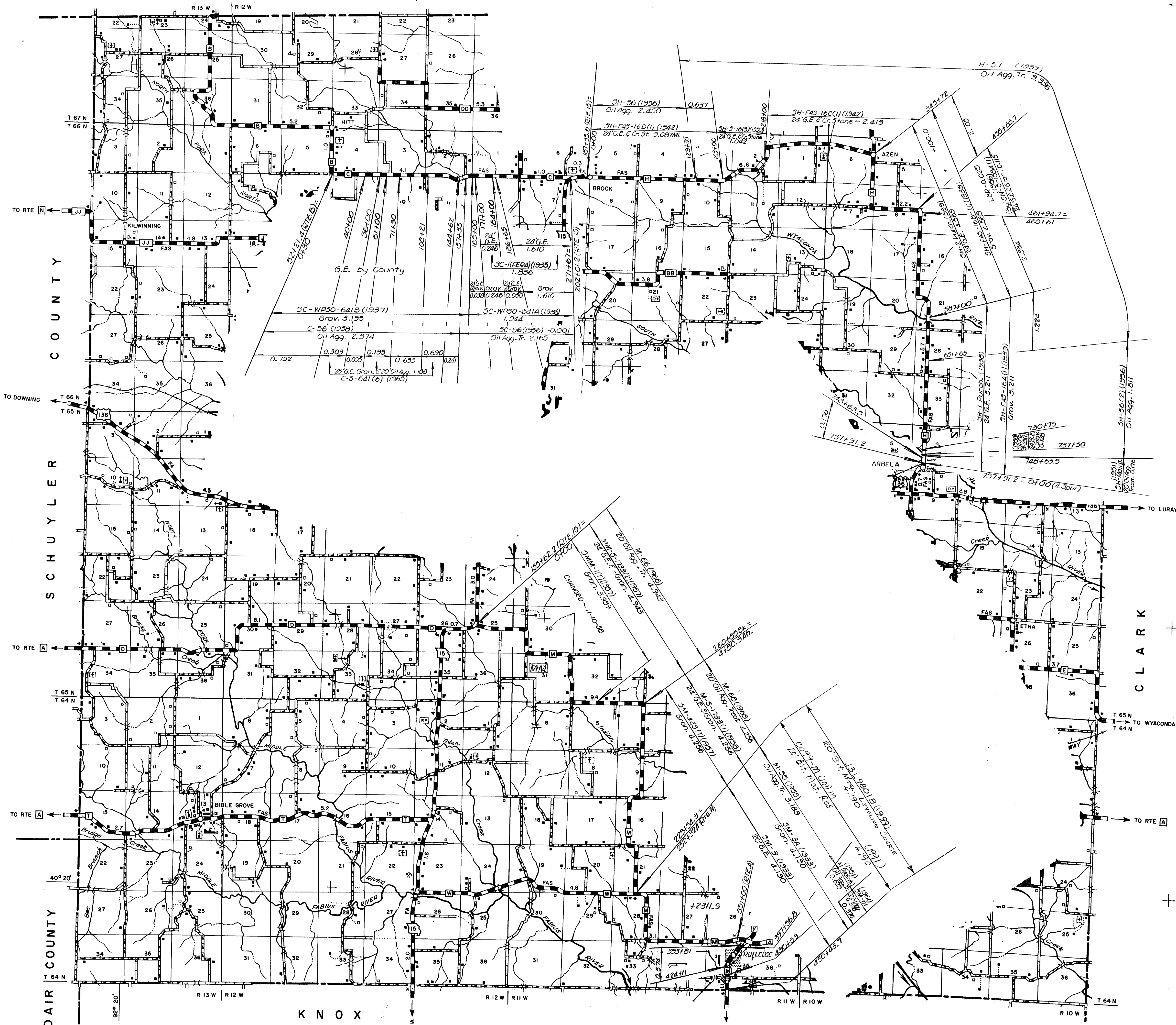
099 SHEET 3 OF 7  
SCOTLAND



IR COUNTY

ROUTES B  
E  
N  
J  
J

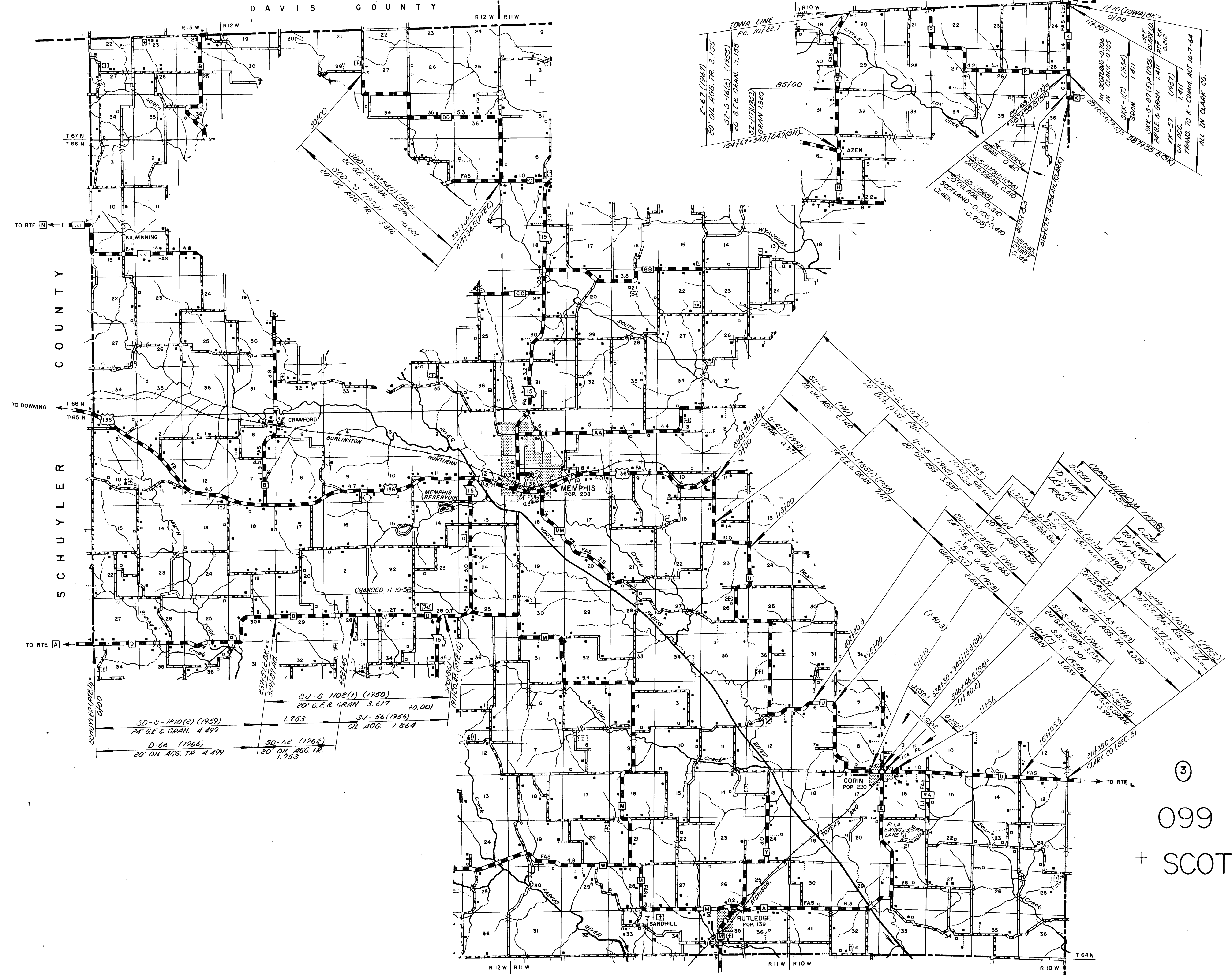
099 SHEET 4 OF 7  
+ SCOTLAND



ROUTES C H M

099 SHEET 5 OF 7  
SCOTLAND

KNOX



COUNTY  
 SCHUYLER

TO RTE N

TO DOWNING

TO RTE A

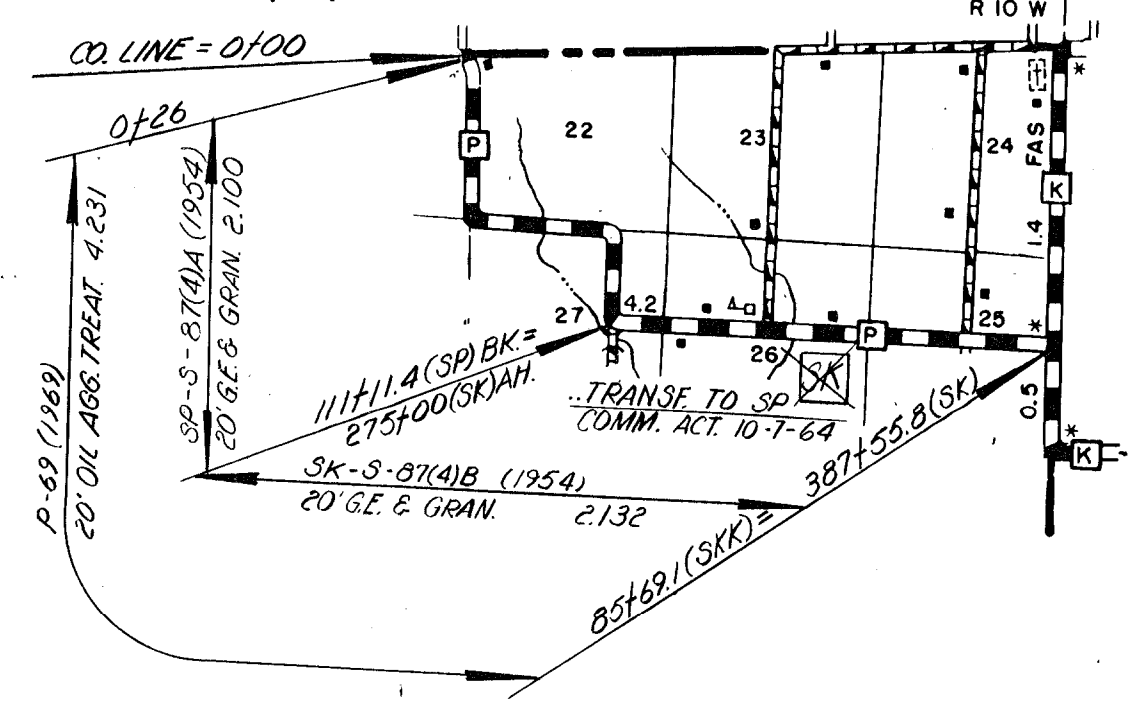
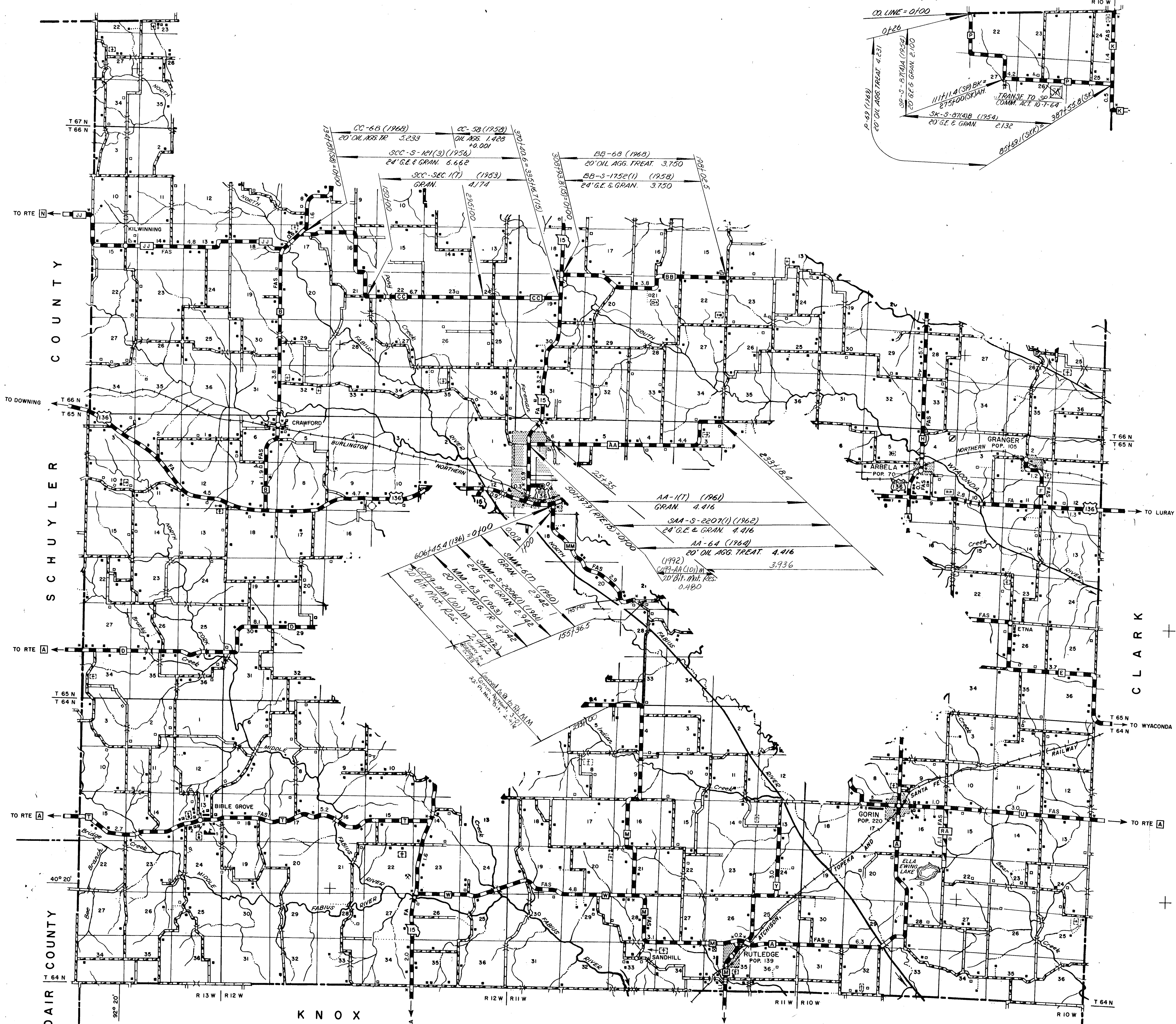
TO RTE L

ROUTES D  
 K  
 U  
 Z  
 DD

099  
 + SCOTLAND

SHEET 6 OF 7

3



- ROUTES
- P
  - AA
  - BB
  - CC
  - MM

099 SHEET 7 OF 7  
SCOTLAND