

CAPE GIRARDEAU CO.

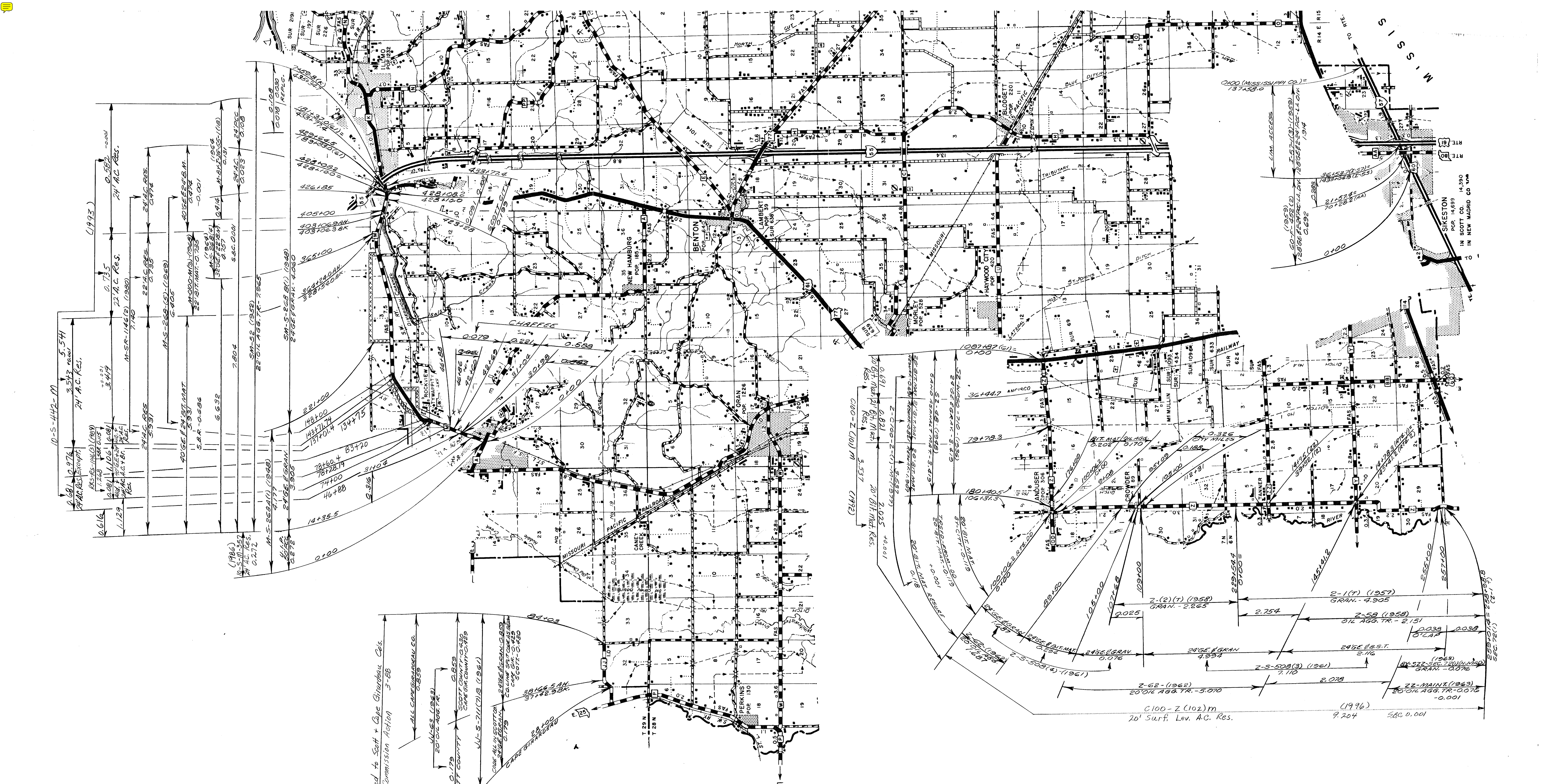
NEW MADRID CO.

ROUTE I-55

SHEET 1 OF 11

100 SCOTT

(10)



Conveyed to Scott + Cape Girardeau Obs.
Commission Action 3-88

ALL CAP. GRANT CO. CO. 0.853

U.S. (1981) 20' OIL AGG. TR. 0.179

SCOTT COUNTY

CAPE GIRARDEAU CO. 0.859

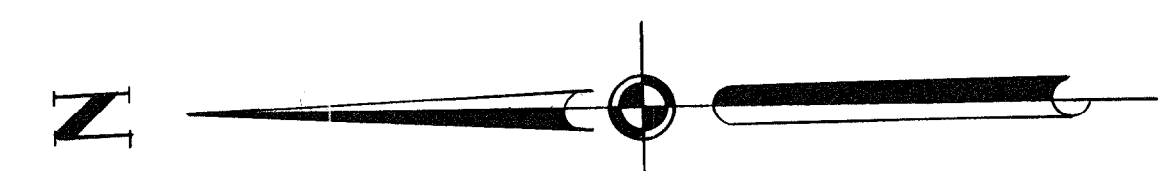
U.S. (1981) 20' OIL AGG. TR. 0.179

U.S. (1981) 20' OIL AGG. TR. 0.179

SCOTT COUNTY

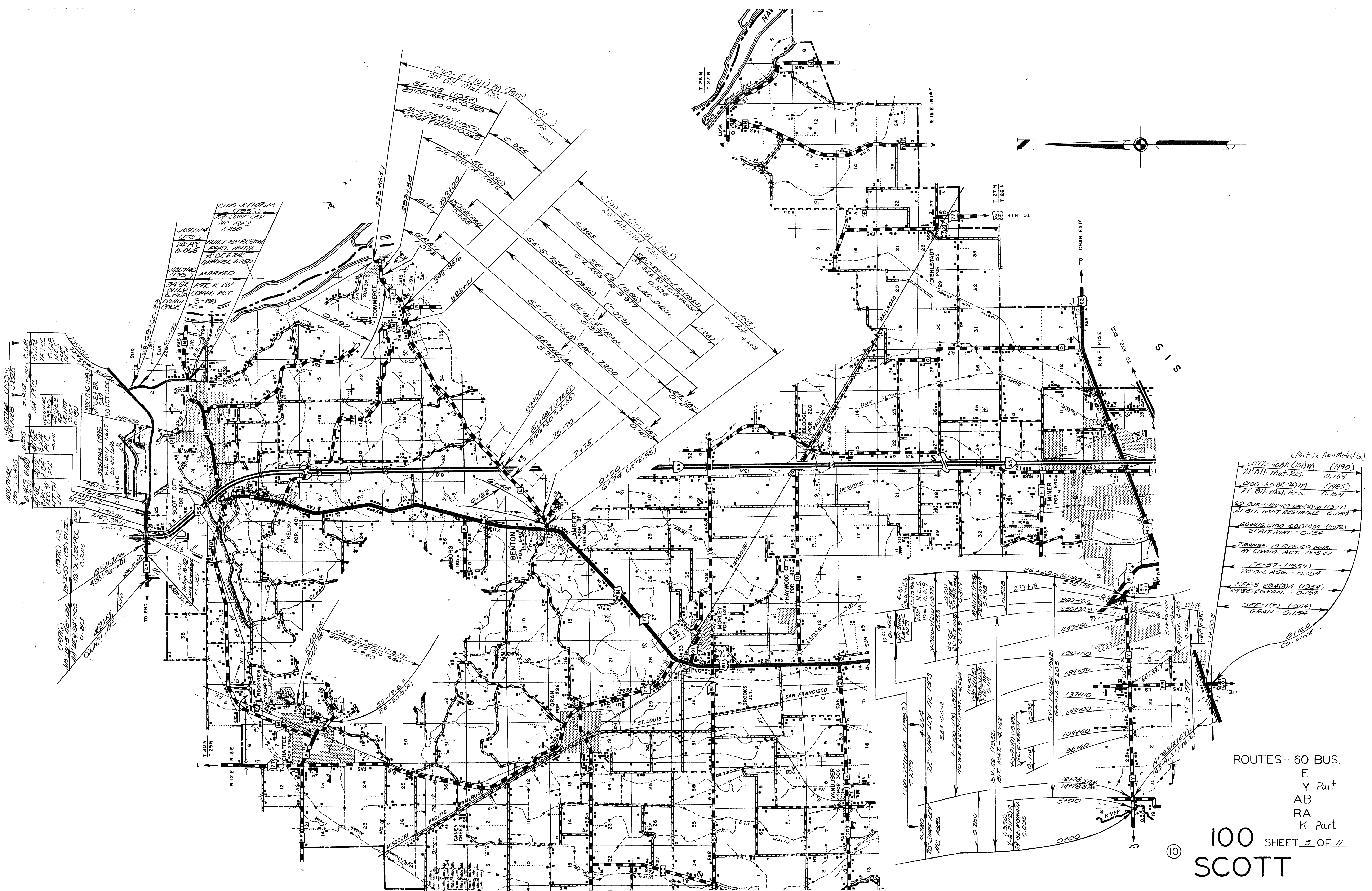
CAPE GIRARDEAU CO. 0.859

U.S. (1981) 20' OIL AGG. TR. 0.179



ROUTES - I-57 PART

60
M
Z
JJ Historical



(Part in New Madrid Co.)

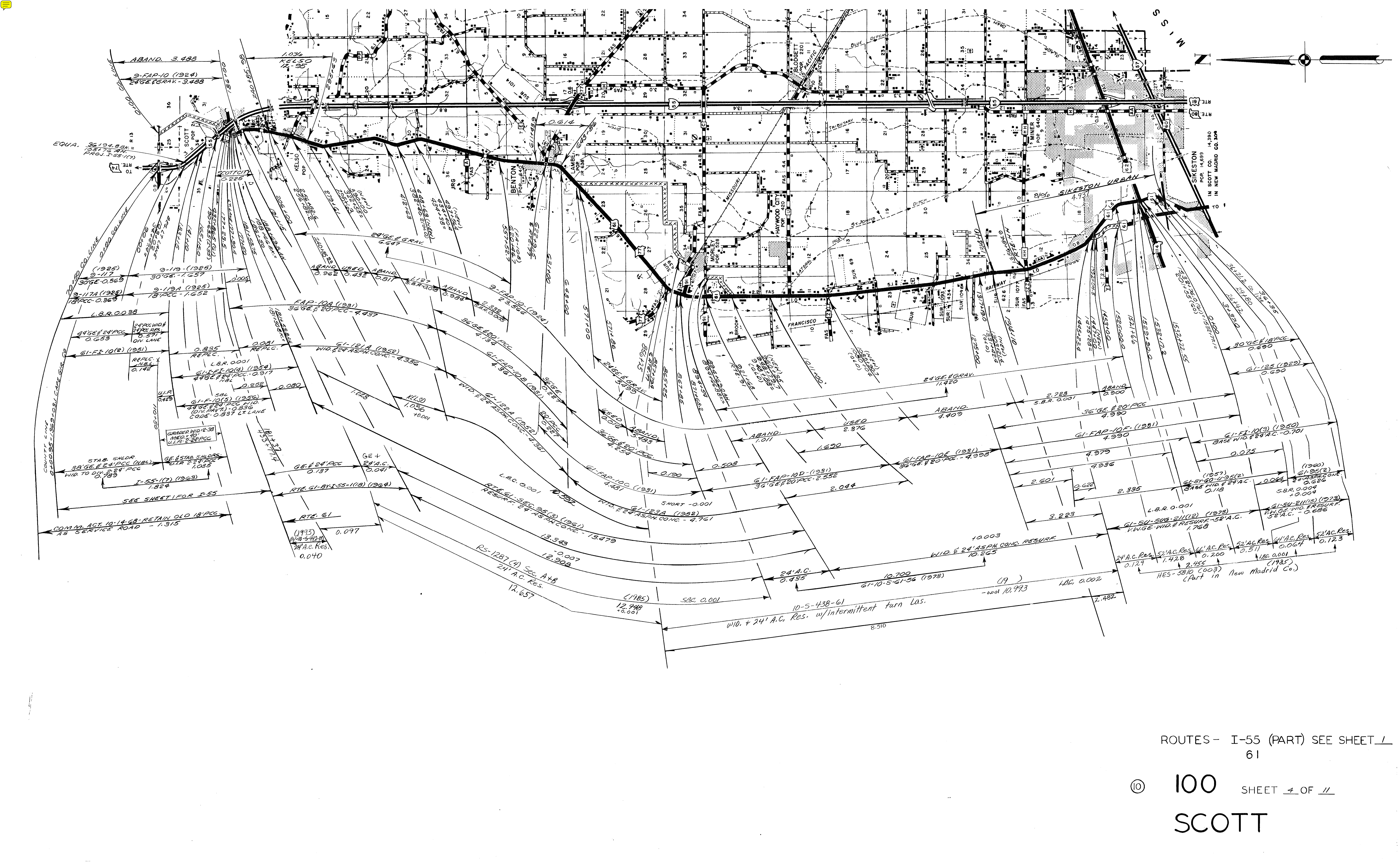
C072-60BR (1910) M	(1990)
21' BIT. MAT. RES.	0.154
C100-60BR (1910) M	(1985)
21' BIT. MAT. RES.	0.154
60 BUS. C100-60BR (1910) M	(1977)
21' BIT. MAT. RESURFACE	0.154
60 BUS. C100-60BR (1910) M	(1972)
21' BIT. MAT.	0.154
TRANS. TO RTE 60 BUS.	BY COMM. ACT. 12-5-61
EE-57 (1957)	
20' OIL AGG.	0.154
SEFS-294(31A) (1954)	
24' GE. GRAN.	0.154
SEF-1(F) (1954)	
GRAN.	0.154

8160 CO. LINE

ROUTES-60 BUS.
E
Y Part
AB
RA
K Part

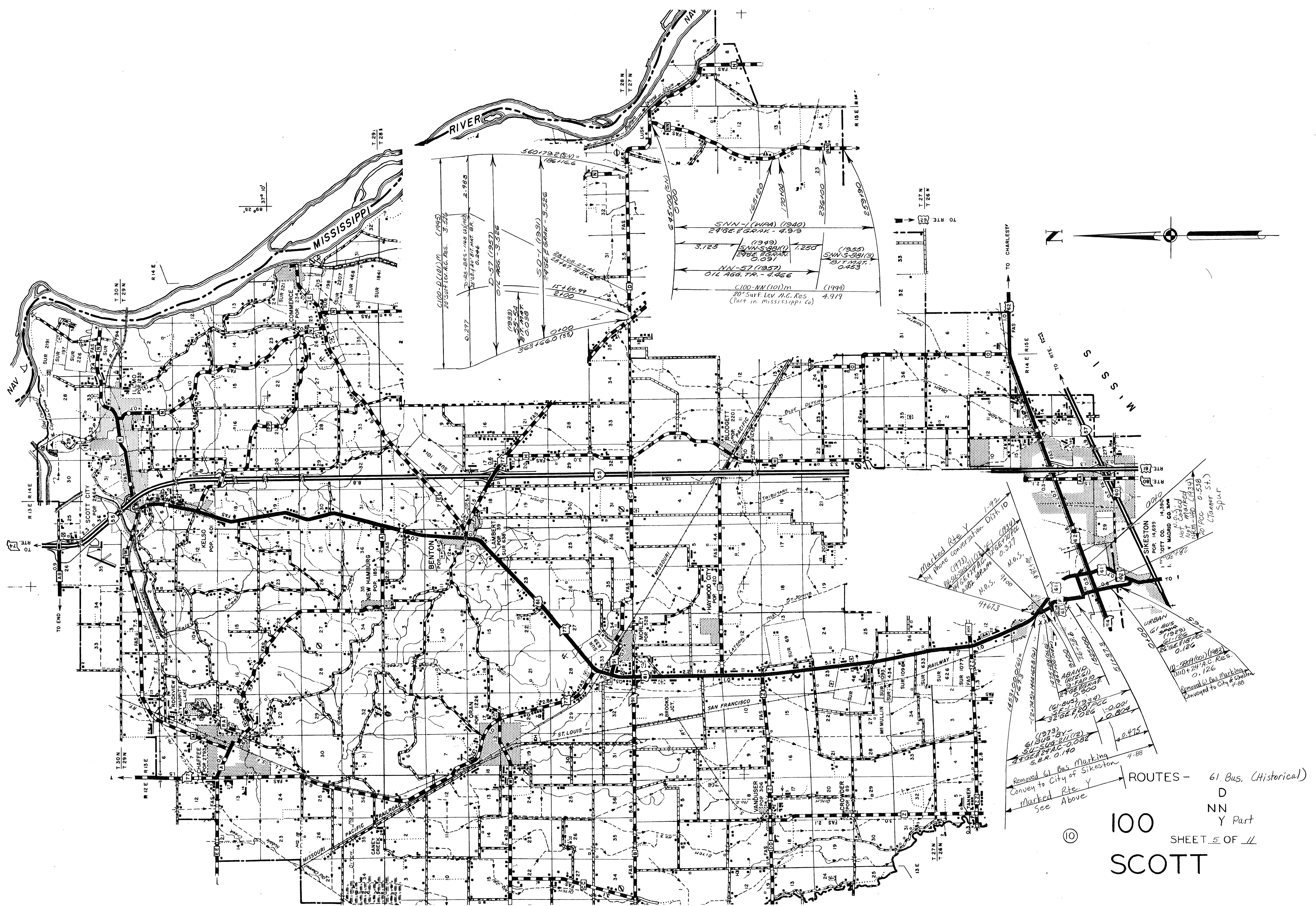
100 SCOTT

SHEET 3 OF 11



ROUTES - I-55 (PART) SEE SHEET / 61

© 100 SCOTT SHEET 4 OF 11



Marked Rte. Y
by phone conversation Dist. 10
(1973)
by 2-26-73
1466-7374
1466-7374
1466-7374
1466-7374
M.O.S. 9100
44673

Urban
61 Bus
5102
61-1934
2966-1026
0.126
11-5891 (10) (1983)
Dist + 24 A.C. Res.
0.126
Removed 61 Bus Marking
Conveyed to City of Sikeston
7-88

ABAND
S.F.A.P. 10
S.F.A.P. 10
2966-1026
0.300
(1973)
61 Bus
5102
S.F.A.P. 10
2966-1026
S.A.R. 0.190
4.475
4.88

Removed 61 Bus Marking
Conveyed to City of Sikeston
7-88

Removed 61 Bus Marking
Conveyed to City of Sikeston
7-88

Removed 61 Bus Marking
Conveyed to City of Sikeston
7-88

Removed 61 Bus Marking
Conveyed to City of Sikeston
7-88

Removed 61 Bus Marking
Conveyed to City of Sikeston
7-88

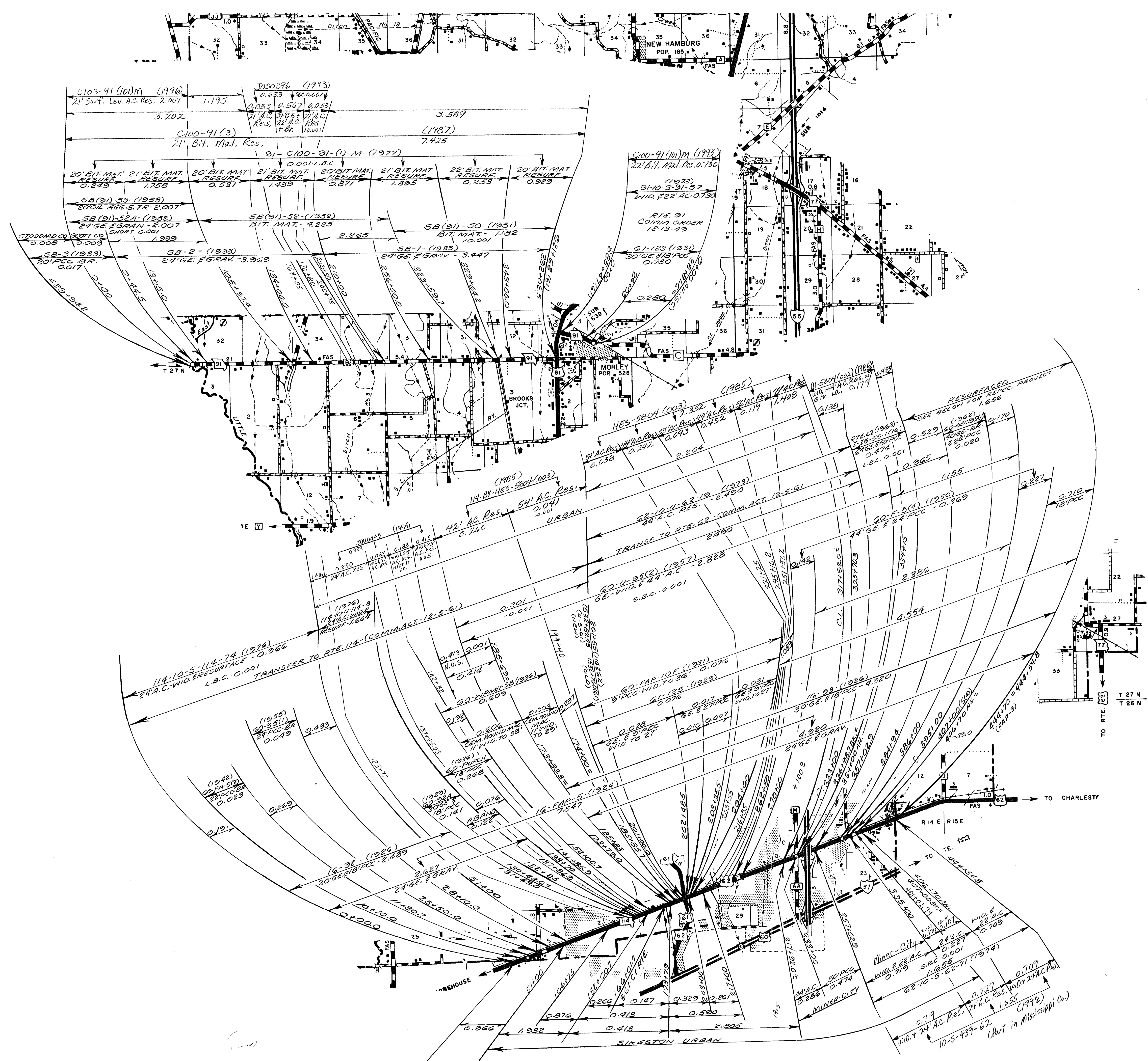
Removed 61 Bus Marking
Conveyed to City of Sikeston
7-88

Removed 61 Bus Marking
Conveyed to City of Sikeston
7-88

Removed 61 Bus Marking
Conveyed to City of Sikeston
7-88

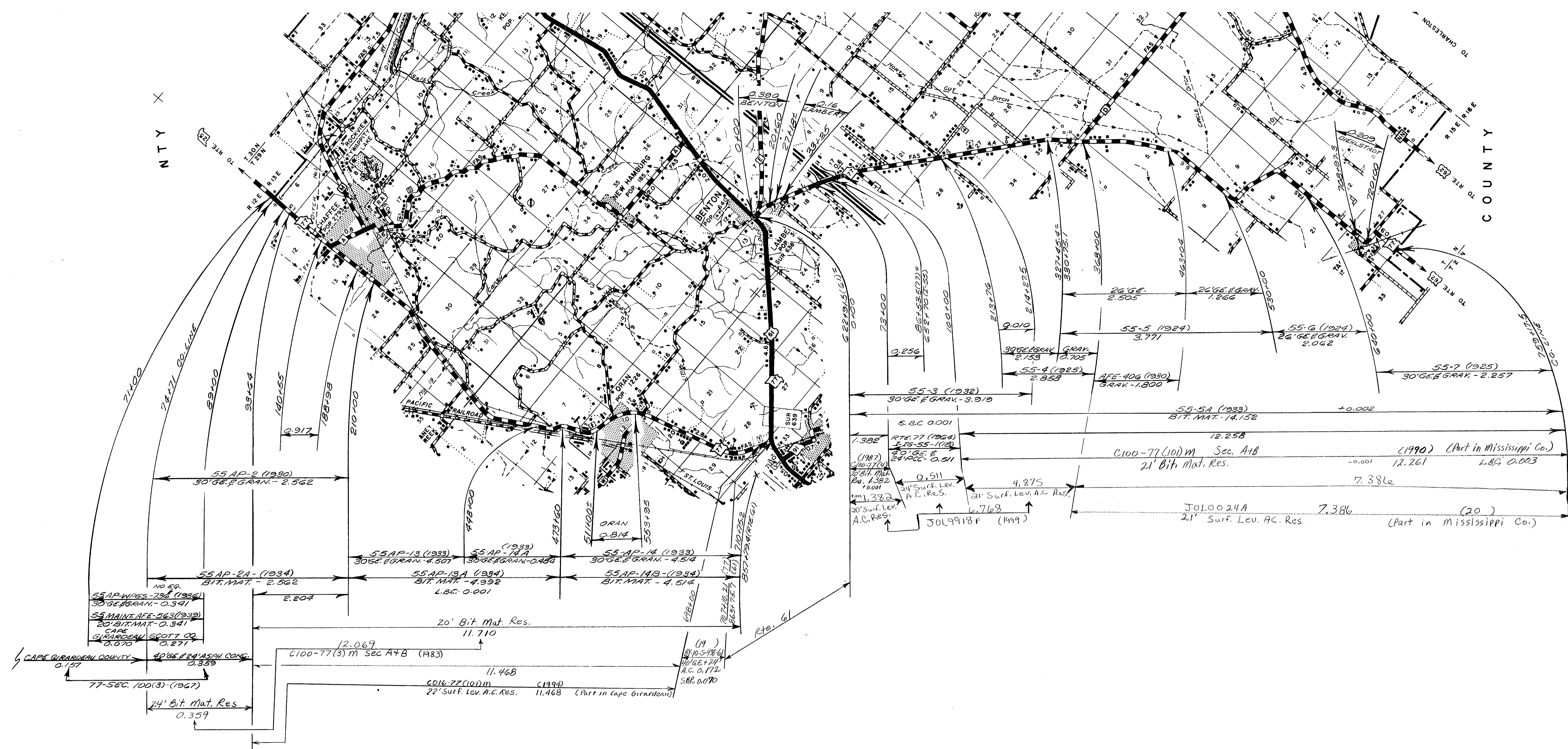
Removed 61 Bus Marking
Conveyed to City of Sikeston
7-88

ROUTES - 61 Bus. (Historical)
D
NN
Y Part
100 SHEET 5 OF 11
SCOTT



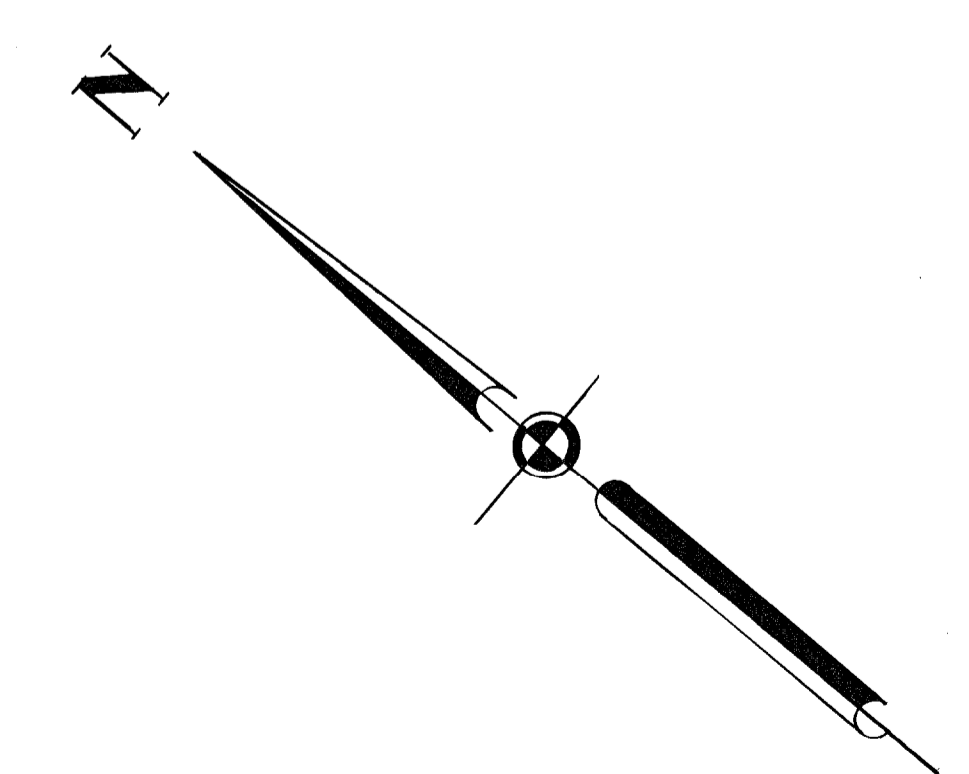
ROUTES - 62
91 (B)
114

© 100 SHEET 6 OF 11
SCOTT



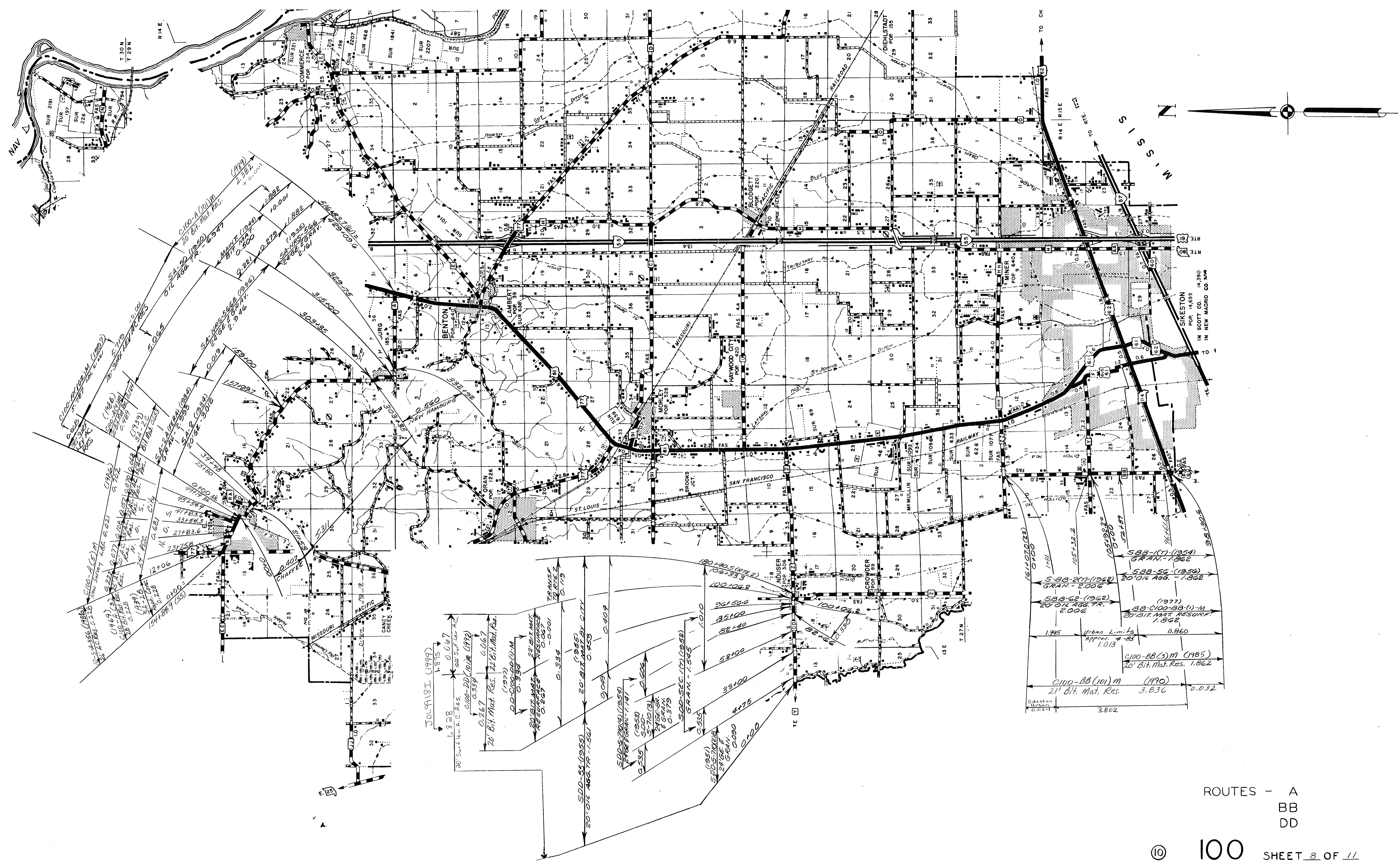
NTY X

COUNTY

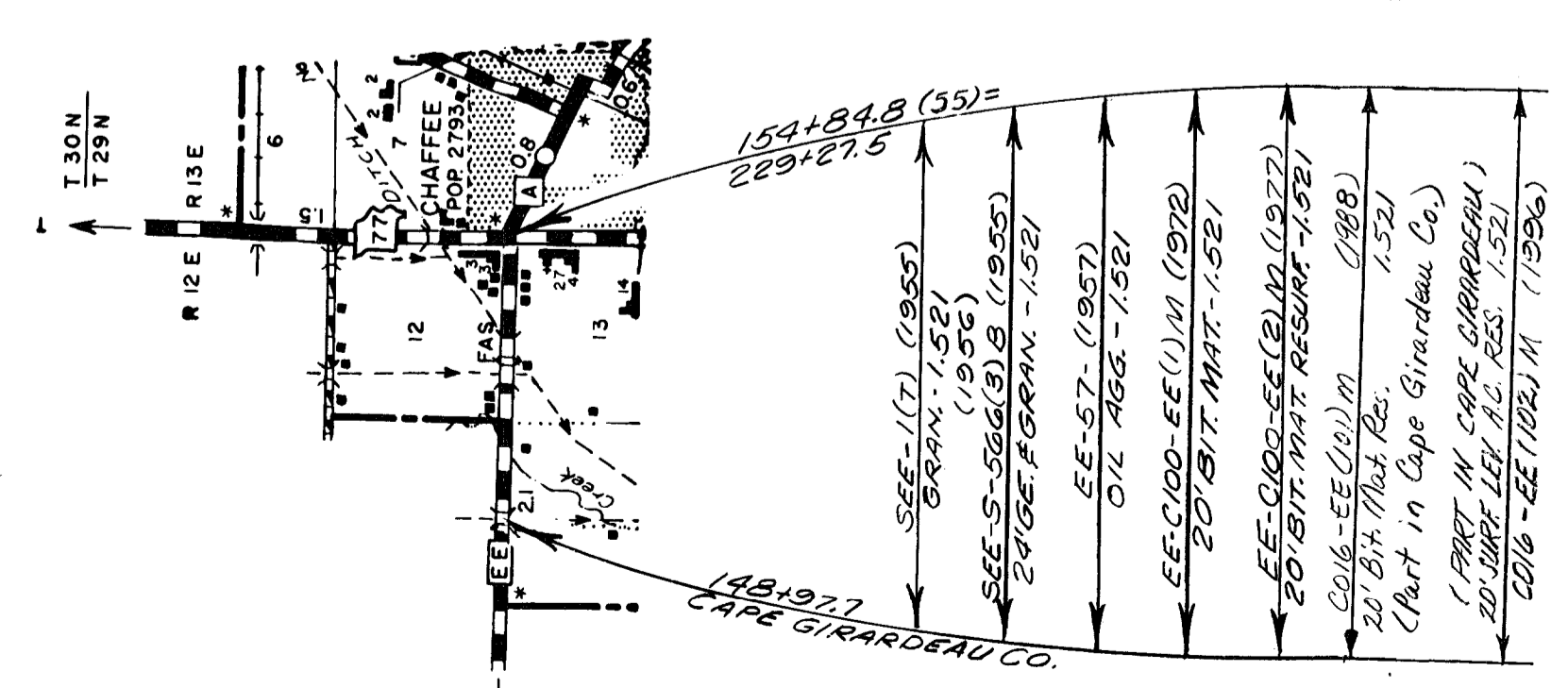
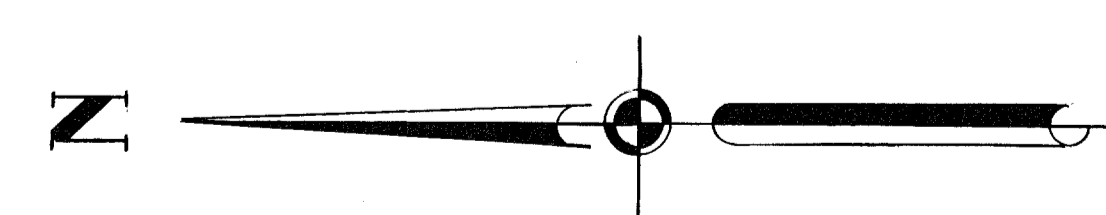
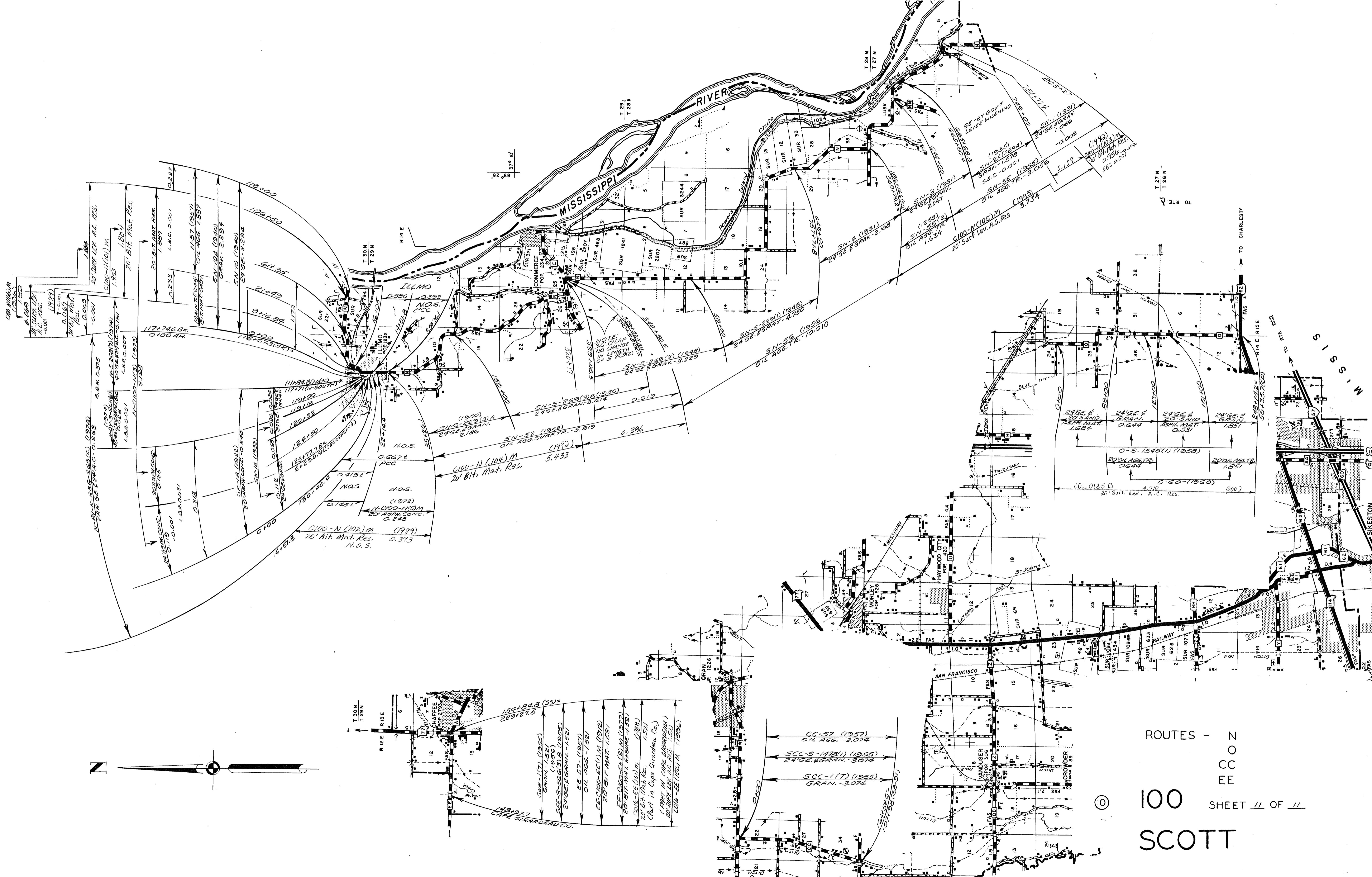


ROUTE - 77

100 SHEET 7 OF 11
SCOTT



ROUTES - A
BB
DD



ROUTES - N
 O
 CC
 EE
 100 SHEET // OF //
 SCOTT